



Sheep and Goats

ISSN: 1949-1611

Released January 31, 2014, by the National Agricultural Statistics Service (NASS), Agricultural Statistics Board, United States Department of Agriculture (USDA).

Total Sheep and Lamb Inventory Down 2 Percent

All sheep and lamb inventory in the United States on January 1, 2014, totaled 5.21 million head, down 2 percent from 2013. Breeding sheep inventory decreased to 3.88 million head on January 1, 2014, down 2 percent from 3.98 million head on January 1, 2013. Ewes one year old and older, at 3.07 million head, were 2 percent below last year. Market sheep and lambs on January 1, 2014, totaled 1.33 million head, down 2 percent from January 1, 2013. Market lambs comprised 94 percent of the total market inventory. Twenty-five percent were lambs under 65 pounds, 11 percent were 65–84 pounds, 24 percent were 85 – 105 pounds, and 34 percent were over 105 pounds. Market sheep comprised the remaining 6 percent of total market inventory.

The 2013 lamb crop of 3.37 million head, was down 2 percent from 2012. The 2013 lambing rate was 107 lambs per 100 ewes one year old and older on January 1, 2013, down 2 percent from 2012.

Shorn wool production in the United States during 2013 was 27.0 million pounds, down 1 percent from 2012. Sheep and lambs shorn totaled 3.70 million head, also down 1 percent from 2012. The average price paid for wool sold in 2013 was \$1.45 per pound for a total value of 39.2 million dollars, down 6 percent from 41.6 million dollars in 2012.

Sheep death loss during 2013 totaled 225 thousand head, a decrease of 2 percent from 2012. Lamb death loss decreased 1 percent from 365 thousand head in 2012 to 360 thousand head in 2013.

Total Goat and Kid Inventory Down 2 Percent

All goat inventory in the United States on January 1, 2014, totaled 2.76 million head, down 2 percent from 2013. Breeding goat inventory totaled 2.26 million head, down 3 percent from 2013. Does one year old and older, at 1.69 million head, were 3 percent below last year's number. Market goats and kids totaled 500 thousand head, up 2 percent from a year ago.

Kid crop for 2013 totaled 1.74 million head for all goats, down 3 percent from 2012.

Meat and all other goats totaled 2.28 million head on January 1, 2014, down 2 percent from 2013. Milk goat inventory was 355 thousand head, down 1 percent from January 1, 2013, while Angora goats were down 4 percent, totaling 131 thousand head.

Mohair production in the United States during 2013 was 790 thousand pounds. Goats and kids clipped totaled 141 thousand head. Average weight per clip was 5.6 pounds. Mohair price was \$4.25 per pound with a value of 3.36 million dollars.

This page intentionally left blank

Contents

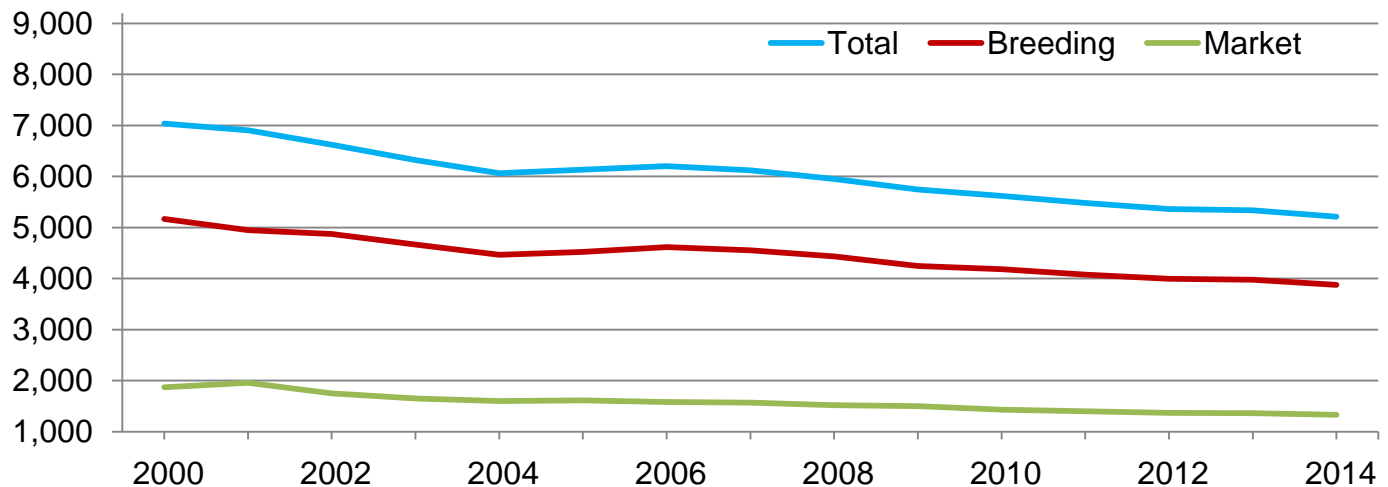
Sheep and Lamb Inventory by Class – United States: January 1, 2013 and 2014	4
Sheep and Lamb Inventory – United States: January 1	4
Wool Production, Price, and Value – United States: 2012 and 2013.....	4
Sheep and Lamb Inventory by Class – States and United States: January 1, 2013 and 2014.....	5
Breeding Sheep and Lamb Inventory by Class – States and United States: January 1, 2013 and 2014	6
Lamb Crop – States and United States: 2012 and 2013.....	7
Market Sheep and Lamb Inventory by Weight Group – States and United States: January 1, 2013.....	8
Market Sheep and Lamb Inventory by Weight Group – States and United States: January 1, 2014.....	9
Sheep and Lamb Farm Slaughter and Death Loss – States and United States: 2012 and 2013.....	10
Wool Production – States and United States: 2012 and 2013.....	11
Wool Price and Value – States and United States: 2012 and 2013.....	12
Goat Inventory by Class – United States: January 1, 2013 and 2014	13
Goat Inventory – United States: January 1	13
Angora Goat Inventory by Class – United States: January 1, 2013 and 2014.....	14
Milk Goat Inventory by Class – United States: January 1, 2013 and 2014	14
Meat and Other Goat Inventory by Class – United States: January 1, 2013 and 2014	14
Angora Goat Inventory – States and United States: January 1, 2013 and 2014.....	15
Mohair Production, Price, and Value – States and United States: 2012 and 2013	15
Milk Goat Inventory – States and United States: January 1, 2013 and 2014.....	16
Meat and Other Goat Inventory – States and United States: January 1, 2013 and 2014	17
Statistical Methodology	18
Reliability of January 1 Sheep and Lamb Estimates.....	19
Information Contacts	19

Sheep and Lamb Inventory by Class – United States: January 1, 2013 and 2014

Class	2013	2014	2014 as percent of 2013
	(1,000 head)	(1,000 head)	(percent)
All sheep and lambs	5,335.0	5,210.0	98
Breeding sheep and lambs	3,975.0	3,880.0	98
Replacement lambs under one year old	660.0	635.0	96
Ewes - one year old and older	3,140.0	3,070.0	98
Rams - one year old and older	175.0	175.0	100
Market	1,360.0	1,330.0	98

Sheep and Lamb Inventory – United States: January 1

Thousand head



Wool Production, Price, and Value – United States: 2012 and 2013

Year	Sheep shorn ¹	Weight per fleece	Shorn wool production	Price per pound	Value
	(1,000 head)	(pounds)	(1,000 pounds)	(dollars)	(1,000 dollars)
2012	3,750	7.3	27,400	1.52	41,595
2013	3,700	7.3	27,000	1.45	39,213

¹ Includes shearing at commercial feeding yards.

Sheep and Lamb Inventory by Class – States and United States: January 1, 2013 and 2014

State	All sheep and lambs			Total breeding		Total market	
	2013	2014	2014 as percent of 2013	2013	2014	2013	2014
	(1,000 head)	(1,000 head)	(percent)	(1,000 head)	(1,000 head)	(1,000 head)	(1,000 head)
Arizona	140.0	150.0	107	105.0	110.0	35.0	40.0
California	570.0	550.0	96	320.0	295.0	250.0	255.0
Colorado	435.0	365.0	84	195.0	170.0	240.0	195.0
Idaho	235.0	250.0	106	185.0	190.0	50.0	60.0
Illinois	53.0	55.0	104	45.0	46.0	8.0	9.0
Indiana	55.0	50.0	91	48.0	43.0	7.0	7.0
Iowa	175.0	155.0	89	128.0	110.0	47.0	45.0
Kansas	65.0	75.0	115	42.0	48.0	23.0	27.0
Kentucky	43.0	49.0	114	35.0	40.0	8.0	9.0
Michigan	82.0	81.0	99	59.0	59.0	23.0	22.0
Minnesota	135.0	135.0	100	99.0	98.0	36.0	37.0
Missouri	75.0	78.0	104	66.0	67.0	9.0	11.0
Montana	235.0	220.0	94	210.0	200.0	25.0	20.0
Nebraska	80.0	76.0	95	66.0	65.0	14.0	11.0
Nevada	73.0	80.0	110	63.0	69.0	10.0	11.0
New England ¹	44.0	43.0	98	37.0	36.0	7.0	7.0
New Mexico	100.0	85.0	85	86.0	73.0	14.0	12.0
New York	70.0	75.0	107	57.0	64.0	13.0	11.0
North Carolina	26.0	27.0	104	21.0	21.0	5.0	6.0
North Dakota	74.0	66.0	89	55.0	50.0	19.0	16.0
Ohio	121.0	117.0	97	99.0	93.0	22.0	24.0
Oklahoma	75.0	65.0	87	59.0	54.0	16.0	11.0
Oregon	210.0	195.0	93	140.0	125.0	70.0	70.0
Pennsylvania	86.0	94.0	109	74.0	79.0	12.0	15.0
South Dakota	275.0	270.0	98	220.0	210.0	55.0	60.0
Tennessee	33.0	36.0	109	28.0	31.0	5.0	5.0
Texas	700.0	740.0	106	560.0	590.0	140.0	150.0
Utah	295.0	275.0	93	275.0	255.0	20.0	20.0
Virginia	87.0	83.0	95	70.0	66.0	17.0	17.0
Washington	54.0	55.0	102	43.0	45.0	11.0	10.0
West Virginia	30.0	32.0	107	27.0	27.0	3.0	5.0
Wisconsin	84.0	83.0	99	68.0	69.0	16.0	14.0
Wyoming	375.0	355.0	95	275.0	265.0	100.0	90.0
Other States ²	145.0	145.0	100	115.0	117.0	30.0	28.0
United States	5,335.0	5,210.0	98	3,975.0	3,880.0	1,360.0	1,330.0

¹ New England includes Connecticut, Maine, Massachusetts, New Hampshire, Rhode Island, and Vermont.

² Unpublished states.

Breeding Sheep and Lamb Inventory by Class – States and United States: January 1, 2013 and 2014

State	Breeding sheep				Replacement lambs		Total breeding sheep and lambs	
	Ewes		Rams		2013	2014	2013	2014
	2013	2014	2013	2014				
	(1,000 head)	(1,000 head)	(1,000 head)	(1,000 head)	(1,000 head)	(1,000 head)	(1,000 head)	(1,000 head)
Arizona	75.0	80.0	8.0	8.0	22.0	22.0	105.0	110.0
California	265.0	240.0	10.0	10.0	45.0	45.0	320.0	295.0
Colorado	162.0	142.0	6.0	5.0	27.0	23.0	195.0	170.0
Idaho	150.0	154.0	5.0	6.0	30.0	30.0	185.0	190.0
Illinois	35.0	36.0	2.0	2.0	8.0	8.0	45.0	46.0
Indiana	37.0	34.0	3.0	3.0	8.0	6.0	48.0	43.0
Iowa	100.0	90.0	5.0	5.0	23.0	15.0	128.0	110.0
Kansas	33.0	39.0	2.0	2.0	7.0	7.0	42.0	48.0
Kentucky	27.0	31.0	2.0	2.0	6.0	7.0	35.0	40.0
Michigan	43.0	43.0	3.0	3.0	13.0	13.0	59.0	59.0
Minnesota	79.0	79.0	4.0	4.0	16.0	15.0	99.0	98.0
Missouri	53.0	53.0	3.0	3.0	10.0	11.0	66.0	67.0
Montana	155.0	155.0	6.0	6.0	49.0	39.0	210.0	200.0
Nebraska	53.0	54.0	3.0	3.0	10.0	8.0	66.0	65.0
Nevada	50.0	55.0	2.0	2.0	11.0	12.0	63.0	69.0
New England ¹	29.0	27.0	2.0	2.0	6.0	7.0	37.0	36.0
New Mexico	66.0	59.0	4.0	3.0	16.0	11.0	86.0	73.0
New York	42.0	47.0	3.0	3.0	12.0	14.0	57.0	64.0
North Carolina	15.0	15.0	2.0	2.0	4.0	4.0	21.0	21.0
North Dakota	44.0	41.0	2.0	2.0	9.0	7.0	55.0	50.0
Ohio	77.0	72.0	6.0	6.0	16.0	15.0	99.0	93.0
Oklahoma	44.0	42.0	4.0	3.0	11.0	9.0	59.0	54.0
Oregon	110.0	97.0	6.0	6.0	24.0	22.0	140.0	125.0
Pennsylvania	58.0	63.0	6.0	5.0	10.0	11.0	74.0	79.0
South Dakota	180.0	172.0	7.0	7.0	33.0	31.0	220.0	210.0
Tennessee	21.0	23.0	2.0	2.0	5.0	6.0	28.0	31.0
Texas	440.0	450.0	30.0	35.0	90.0	105.0	560.0	590.0
Utah	225.0	210.0	9.0	8.0	41.0	37.0	275.0	255.0
Virginia	56.0	53.0	3.0	3.0	11.0	10.0	70.0	66.0
Washington	33.0	34.0	3.0	3.0	7.0	8.0	43.0	45.0
West Virginia	22.0	22.0	1.0	1.0	4.0	4.0	27.0	27.0
Wisconsin	53.0	52.0	3.0	3.0	12.0	14.0	68.0	69.0
Wyoming	225.0	220.0	8.0	7.0	42.0	38.0	275.0	265.0
Other States ²	83.0	86.0	10.0	10.0	22.0	21.0	115.0	117.0
United States	3,140.0	3,070.0	175.0	175.0	660.0	635.0	3,975.0	3,880.0

¹ New England includes Connecticut, Maine, Massachusetts, New Hampshire, Rhode Island, and Vermont.

² Unpublished states.

Lamb Crop – States and United States: 2012 and 2013

State	Ewes 1 year and older January 1		Lambs per 100 ewes January 1		Lamb crop ¹		
	2012	2013	2012	2013	2012	2013	2013 as percent of 2012
	(1,000 head)	(1,000 head)	(number)	(number)	(1,000 head)	(1,000 head)	(percent)
Arizona	71.0	75.0	63	60	45.0	45.0	100
California	265.0	265.0	91	87	240.0	230.0	96
Colorado	154.0	162.0	114	108	175.0	175.0	100
Idaho	166.0	150.0	123	127	205.0	190.0	93
Illinois	37.0	35.0	127	137	47.0	48.0	102
Indiana	37.0	37.0	127	119	47.0	44.0	94
Iowa	115.0	100.0	130	135	150.0	135.0	90
Kansas	34.0	33.0	126	136	43.0	45.0	105
Kentucky	27.0	27.0	119	152	32.0	41.0	128
Michigan	43.0	43.0	151	147	65.0	63.0	97
Minnesota	83.0	79.0	163	171	135.0	135.0	100
Missouri	58.0	53.0	117	132	68.0	70.0	103
Montana	165.0	155.0	127	129	210.0	200.0	95
Nebraska	51.0	53.0	143	134	73.0	71.0	97
Nevada	49.0	50.0	98	104	48.0	52.0	108
New England ²	29.0	29.0	110	110	32.0	32.0	100
New Mexico	72.0	66.0	69	64	50.0	42.0	84
New York	38.0	42.0	118	114	45.0	48.0	107
North Carolina	15.0	15.0	100	113	15.0	17.0	113
North Dakota	46.0	44.0	130	125	60.0	55.0	92
Ohio	78.0	77.0	124	119	97.0	92.0	95
Oklahoma	42.0	44.0	117	100	49.0	44.0	90
Oregon	109.0	110.0	128	114	140.0	125.0	89
Pennsylvania	56.0	58.0	113	119	63.0	69.0	110
South Dakota	185.0	180.0	124	128	230.0	230.0	100
Tennessee	21.0	21.0	114	133	24.0	28.0	117
Texas	425.0	440.0	73	73	310.0	320.0	103
Utah	230.0	225.0	102	96	235.0	215.0	91
Virginia	57.0	56.0	107	104	61.0	58.0	95
Washington	33.0	33.0	124	136	41.0	45.0	110
West Virginia	23.0	22.0	126	141	29.0	31.0	107
Wisconsin	54.0	53.0	131	136	71.0	72.0	101
Wyoming	215.0	225.0	109	100	235.0	225.0	96
Other States ³	82.0	83.0	98	94	80.0	78.0	98
United States	3,165.0	3,140.0	109	107	3,450.0	3,370.0	98

¹ Lamb crop is defined as lambs born in the Eastern States and lambs docked or branded in the Western States.

² New England includes Connecticut, Maine, Massachusetts, New Hampshire, Rhode Island, and Vermont.

³ Unpublished states.

Market Sheep and Lamb Inventory by Weight Group – States and United States: January 1, 2013

State	Market lambs					Market sheep	Total market sheep and lambs
	Under 65 pounds	65 - 84 pounds	85 - 105 pounds	Over 105 pounds	Total		
	(1,000 head)	(1,000 head)	(1,000 head)	(1,000 head)	(1,000 head)	(1,000 head)	(1,000 head)
Arizona	7.0	2.0	12.0	10.0	31.0	4.0	35.0
California	110.0	20.0	60.0	55.0	245.0	5.0	250.0
Colorado	2.0	11.0	24.0	198.0	235.0	5.0	240.0
Idaho	2.0	2.0	11.0	32.0	47.0	3.0	50.0
Illinois	3.4	1.8	0.8	1.0	7.0	1.0	8.0
Indiana	3.0	1.0	1.0	1.0	6.0	1.0	7.0
Iowa	4.0	5.0	17.0	18.0	44.0	3.0	47.0
Kansas	10.0	2.5	1.5	5.0	19.0	4.0	23.0
Kentucky	3.0	2.0	1.5	0.5	7.0	1.0	8.0
Michigan	2.0	4.0	7.0	8.0	21.0	2.0	23.0
Minnesota	7.0	7.0	8.0	13.0	35.0	1.0	36.0
Missouri	3.1	2.0	1.7	1.2	8.0	1.0	9.0
Montana	2.0	6.0	11.0	5.0	24.0	1.0	25.0
Nebraska	1.8	2.0	4.2	5.0	13.0	1.0	14.0
Nevada	-	1.0	4.0	4.0	9.0	1.0	10.0
New England ¹	2.0	1.4	1.1	0.5	5.0	2.0	7.0
New Mexico	2.0	3.0	4.0	3.0	12.0	2.0	14.0
New York	7.0	2.0	1.0	1.0	11.0	2.0	13.0
North Carolina	2.5	1.0	0.4	0.1	4.0	1.0	5.0
North Dakota	2.0	4.0	7.0	5.0	18.0	1.0	19.0
Ohio	5.5	5.5	5.5	4.5	21.0	1.0	22.0
Oklahoma	9.0	2.0	2.0	2.0	15.0	1.0	16.0
Oregon	10.0	7.0	20.0	30.0	67.0	3.0	70.0
Pennsylvania	5.5	2.3	1.5	0.7	10.0	2.0	12.0
South Dakota	4.0	8.0	20.0	22.0	54.0	1.0	55.0
Tennessee	2.7	0.5	0.5	0.8	4.5	0.5	5.0
Texas	80.0	25.0	10.0	15.0	130.0	10.0	140.0
Utah	1.0	2.0	5.0	10.0	18.0	2.0	20.0
Virginia	6.0	4.0	4.0	2.0	16.0	1.0	17.0
Washington	3.0	3.0	2.4	1.1	9.5	1.5	11.0
West Virginia	1.0	1.0	0.5	0.5	3.0	-	3.0
Wisconsin	3.0	2.0	6.0	3.0	14.0	2.0	16.0
Wyoming	1.0	12.0	45.0	40.0	98.0	2.0	100.0
Other States ²	12.5	5.0	4.4	2.1	24.0	6.0	30.0
United States	320.0	160.0	305.0	500.0	1,285.0	75.0	1,360.0

- Represents zero.

¹ New England includes Connecticut, Maine, Massachusetts, New Hampshire, Rhode Island, and Vermont.

² Unpublished states.

Market Sheep and Lamb Inventory by Weight Group – States and United States: January 1, 2014

State	Market lambs					Market sheep	Total market sheep and lambs
	Under 65 pounds	65 - 84 pounds	85 - 105 pounds	Over 105 pounds	Total		
	(1,000 head)	(1,000 head)	(1,000 head)	(1,000 head)	(1,000 head)	(1,000 head)	(1,000 head)
Arizona	12.0	2.0	13.0	9.0	36.0	4.0	40.0
California	100.0	15.0	50.0	80.0	245.0	10.0	255.0
Colorado	3.0	12.0	60.0	118.0	193.0	2.0	195.0
Idaho	11.0	2.0	4.0	41.0	58.0	2.0	60.0
Illinois	3.8	2.0	1.2	1.0	8.0	1.0	9.0
Indiana	3.0	1.0	1.0	1.0	6.0	1.0	7.0
Iowa	5.0	4.0	12.0	21.0	42.0	3.0	45.0
Kansas	11.0	3.0	3.0	6.0	23.0	4.0	27.0
Kentucky	3.0	3.0	1.5	0.5	8.0	1.0	9.0
Michigan	2.0	4.0	5.0	8.0	19.0	3.0	22.0
Minnesota	8.0	6.0	9.0	13.0	36.0	1.0	37.0
Missouri	3.8	2.2	2.2	1.8	10.0	1.0	11.0
Montana	2.0	6.0	4.0	7.0	19.0	1.0	20.0
Nebraska	3.0	1.0	2.0	4.0	10.0	1.0	11.0
Nevada	-	2.0	6.0	2.0	10.0	1.0	11.0
New England ¹	1.7	1.6	1.1	0.6	5.0	2.0	7.0
New Mexico	1.0	5.0	3.0	1.0	10.0	2.0	12.0
New York	5.0	2.0	2.0	1.0	10.0	1.0	11.0
North Carolina	2.7	1.0	1.0	0.3	5.0	1.0	6.0
North Dakota	1.0	3.0	6.0	5.0	15.0	1.0	16.0
Ohio	6.5	5.0	6.0	5.5	23.0	1.0	24.0
Oklahoma	6.0	2.0	1.0	1.0	10.0	1.0	11.0
Oregon	6.0	7.0	20.0	34.0	67.0	3.0	70.0
Pennsylvania	6.8	2.8	2.3	1.1	13.0	2.0	15.0
South Dakota	4.0	7.0	17.0	30.0	58.0	2.0	60.0
Tennessee	2.7	0.8	0.7	0.3	4.5	0.5	5.0
Texas	90.0	20.0	10.0	15.0	135.0	15.0	150.0
Utah	1.0	2.0	7.0	8.0	18.0	2.0	20.0
Virginia	6.5	4.0	4.0	1.5	16.0	1.0	17.0
Washington	2.5	3.5	1.5	2.0	9.5	0.5	10.0
West Virginia	2.0	1.0	1.0	1.0	5.0	-	5.0
Wisconsin	4.0	2.0	3.0	3.0	12.0	2.0	14.0
Wyoming	3.0	8.0	51.0	27.0	89.0	1.0	90.0
Other States ²	11.0	4.1	4.5	2.4	22.0	6.0	28.0
United States	334.0	147.0	316.0	453.0	1,250.0	80.0	1,330.0

- Represents zero.

¹ New England includes Connecticut, Maine, Massachusetts, New Hampshire, Rhode Island, and Vermont.

² Unpublished states.

Sheep and Lamb Farm Slaughter and Death Loss – States and United States: 2012 and 2013

State	Farm slaughter ¹		Deaths			
			Sheep		Lambs	
	2012	2013	2012	2013	2012	2013
	(1,000 head)	(1,000 head)	(1,000 head)	(1,000 head)	(1,000 head)	(1,000 head)
Arizona	12.3	12.5	7.0	5.0	4.0	3.0
California	4.5	4.5	15.0	12.0	7.0	6.0
Colorado	2.5	2.5	14.0	11.0	20.0	15.0
Idaho	2.5	2.5	9.0	7.0	12.0	10.0
Illinois	2.0	2.0	2.0	3.0	5.5	6.0
Indiana	3.3	3.3	3.0	3.0	6.5	6.0
Iowa	1.4	1.4	8.0	8.0	18.0	16.0
Kansas	2.5	2.5	3.0	3.0	5.0	6.0
Kentucky	0.5	0.5	3.0	2.0	5.0	5.0
Michigan	2.0	2.0	3.0	3.0	6.0	6.0
Minnesota	4.0	4.0	8.0	8.0	16.0	17.0
Missouri	1.0	1.0	3.0	3.5	8.0	10.0
Montana	1.5	1.5	12.0	11.0	16.0	16.0
Nebraska	0.3	0.4	4.0	4.0	9.0	8.0
Nevada	1.0	1.0	5.0	5.0	10.0	10.0
New England ²	2.2	2.2	1.5	1.2	3.0	2.0
New Mexico	5.3	5.4	7.0	6.0	4.0	4.0
New York	2.5	2.5	2.0	2.0	5.0	5.0
North Carolina	0.2	0.2	1.0	1.3	2.0	2.5
North Dakota	0.5	0.5	3.0	2.5	8.0	6.0
Ohio	3.0	3.0	7.0	6.0	12.0	12.0
Oklahoma	1.3	1.5	4.0	4.0	7.0	7.0
Oregon	4.0	4.0	8.0	9.0	7.0	7.0
Pennsylvania	2.0	2.0	3.0	5.0	8.0	9.5
South Dakota	1.5	1.5	10.0	12.0	26.0	30.0
Tennessee	1.3	1.3	2.0	3.0	3.5	4.0
Texas	2.0	2.0	36.0	40.0	58.0	59.0
Utah	6.0	6.1	13.0	13.0	18.0	18.0
Virginia	3.0	3.0	4.0	4.0	9.5	9.0
Washington	6.0	6.1	2.5	3.0	2.0	2.0
West Virginia	0.1	0.2	1.5	1.5	4.0	5.0
Wisconsin	1.5	1.5	4.0	4.0	8.0	10.0
Wyoming	2.0	2.0	10.0	9.0	14.0	10.0
Other States ³	6.8	6.9	10.5	10.0	18.0	18.0
United States	92.5	93.5	229.0	225.0	365.0	360.0

¹ Excludes custom slaughter for farmers at commercial establishments.

² New England includes Connecticut, Maine, Massachusetts, New Hampshire, Rhode Island, and Vermont.

³ Unpublished states.

Wool Production – States and United States: 2012 and 2013

State	Sheep shorn		Weight per fleece		Production	
	2012 (1,000 head)	2013 (1,000 head)	2012 (pounds)	2013 (pounds)	2012 (1,000 pounds)	2013 (1,000 pounds)
Arizona	90.0	110.0	6.1	6.0	550	660
California	410.0	400.0	6.3	6.5	2,600	2,600
Colorado	305.0	310.0	6.9	6.8	2,100	2,100
Idaho	200.0	200.0	9.0	9.0	1,800	1,800
Illinois	46.0	42.0	6.7	7.1	310	300
Indiana	41.0	36.0	6.1	6.1	250	220
Iowa	165.0	155.0	5.5	5.5	900	850
Kansas	42.0	45.0	6.1	6.3	255	285
Kentucky	14.0	11.0	6.8	6.4	95	70
Michigan	66.0	65.0	5.9	6.2	390	400
Minnesota	130.0	135.0	6.2	6.3	800	850
Missouri	45.0	43.0	6.0	6.0	270	260
Montana	200.0	200.0	9.0	8.9	1,790	1,770
Nebraska	60.0	59.0	7.0	7.1	420	420
Nevada	56.0	60.0	10.2	9.8	570	585
New England ¹	34.0	33.0	6.8	6.7	230	220
New Mexico	85.0	75.0	7.6	7.9	650	590
New York	35.0	38.0	6.3	6.3	220	240
North Carolina	7.0	7.0	5.0	5.0	35	35
North Dakota	65.0	60.0	8.0	8.2	520	490
Ohio	93.0	80.0	6.0	6.1	560	490
Oklahoma	30.0	24.0	5.0	6.3	150	150
Oregon	160.0	160.0	6.9	6.9	1,100	1,100
Pennsylvania	55.0	56.0	6.7	6.6	370	370
South Dakota	250.0	250.0	7.6	7.3	1,890	1,830
Tennessee	17.0	18.0	5.9	5.6	100	100
Texas	290.0	310.0	7.2	7.4	2,100	2,300
Utah	280.0	240.0	8.9	9.2	2,500	2,200
Virginia	34.0	32.0	5.9	5.9	200	190
Washington	40.0	38.0	6.8	7.8	270	295
West Virginia	19.0	19.0	6.1	5.5	115	105
Wisconsin	63.0	59.0	7.0	6.8	440	400
Wyoming	275.0	285.0	9.3	8.6	2,550	2,450
Other States ²	48.0	45.0	6.3	6.1	300	275
United States	3,750.0	3,700.0	7.3	7.3	27,400	27,000

¹ New England includes Connecticut, Maine, Massachusetts, New Hampshire, Rhode Island, and Vermont.

² Unpublished states.

Wool Price and Value – States and United States: 2012 and 2013

[United States value may not add due to rounding]

State	Price per pound		Value ¹	
	2012 (dollars)	2013 (dollars)	2012 (1,000 dollars)	2013 (1,000 dollars)
Arizona	0.75	0.80	413	528
California	1.60	1.45	4,160	3,770
Colorado	2.00	1.90	4,200	3,990
Idaho	1.70	1.35	3,060	2,430
Illinois	0.72	0.52	223	156
Indiana	0.67	0.82	168	180
Iowa	0.70	0.65	630	553
Kansas	0.70	0.85	179	242
Kentucky	0.55	0.50	52	35
Michigan	0.68	0.85	265	340
Minnesota	0.73	0.84	584	714
Missouri	0.60	0.57	162	148
Montana	2.10	2.20	3,759	3,894
Nebraska	0.68	1.05	286	441
Nevada	1.90	2.10	1,083	1,229
New England ²	0.80	0.80	184	176
New Mexico	2.00	1.35	1,300	797
New York	0.70	0.60	154	144
North Carolina	1.50	1.00	53	35
North Dakota	1.45	1.25	754	613
Ohio	0.60	0.69	336	338
Oklahoma	0.70	0.60	105	90
Oregon	1.56	1.11	1,716	1,221
Pennsylvania	0.44	0.46	163	170
South Dakota	1.67	1.57	3,156	2,873
Tennessee	1.01	0.77	101	77
Texas	1.67	1.76	3,507	4,048
Utah	1.60	1.60	4,000	3,520
Virginia	0.90	0.85	180	162
Washington	1.55	1.10	419	325
West Virginia	0.94	0.86	108	90
Wisconsin	0.75	0.70	330	280
Wyoming	2.10	2.13	5,355	5,219
Other States ³	1.50	1.40	450	385
United States	1.52	1.45	41,595	39,213

¹ Production multiplied by marketing year average price. United States value is the summation of State values.

² New England includes Connecticut, Maine, Massachusetts, New Hampshire, Rhode Island, and Vermont.

³ Unpublished states.

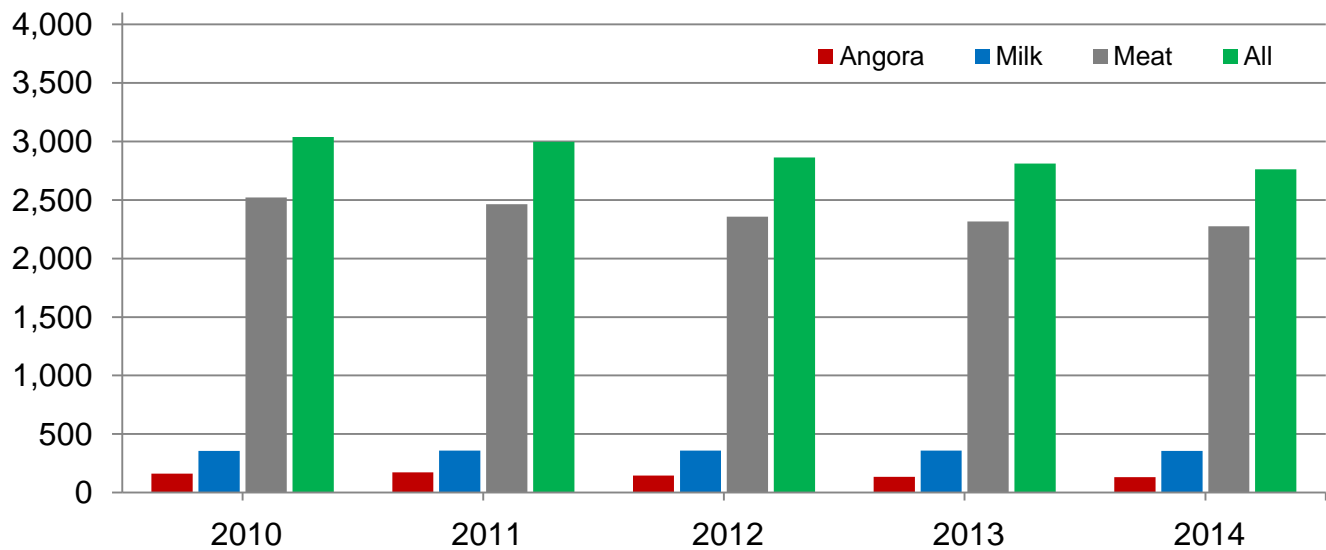
Goat Inventory by Class – United States: January 1, 2013 and 2014

Class	2013	2014	2014 as percent of 2013
	(head)	(head)	(percent)
All goats and kids	2,811,000	2,761,000	98
All, breeding goats	2,321,000	2,261,000	97
Replacement kids - under one year	412,000	403,000	98
Does - one year old and older	1,734,000	1,688,000	97
Bucks - one year old and older	175,000	170,000	97
All, market goats and kids	490,000	500,000	102
Kid crop ¹	1,787,000	1,739,000	97

¹ Kid crop refers to kids born the previous year.

Goat Inventory – United States: January 1

Thousand head



Angora Goat Inventory by Class – United States: January 1, 2013 and 2014

Class	2013	2014	2014 as percent of 2013
	(head)	(head)	(percent)
Angora goats and kids	136,000	131,000	96
Angora, breeding goats	121,000	116,000	96
Replacement kids - under one year	18,000	18,000	100
Does - one year old and older	96,000	91,000	95
Bucks - one year old and older	7,000	7,000	100
Angora, market goats and kids	15,000	15,000	100
Kid crop ¹	70,000	68,000	97

¹ Kid crop refers to kids born the previous year.

Milk Goat Inventory by Class – United States: January 1, 2013 and 2014

Class	2013	2014	2014 as percent of 2013
	(head)	(head)	(percent)
Milk goats and kids	360,000	355,000	99
Milk, breeding goats	325,000	320,000	98
Replacement kids - under one year	68,000	65,000	96
Does - one year old and older	234,000	232,000	99
Bucks - one year old and older	23,000	23,000	100
Milk, market goats and kids	35,000	35,000	100
Kid crop ¹	267,000	251,000	94

¹ Kid crop refers to kids born the previous year.

Meat and Other Goat Inventory by Class – United States: January 1, 2013 and 2014

Class	2013	2014	2014 as percent of 2013
	(head)	(head)	(percent)
Meat and other goats and kids	2,315,000	2,275,000	98
Meat and other, breeding goats	1,875,000	1,825,000	97
Replacement kids - under one year	326,000	320,000	98
Does - one year old and older	1,404,000	1,365,000	97
Bucks - one year old and older	145,000	140,000	97
Meat and other, market goats and kids	440,000	450,000	102
Kid crop ¹	1,450,000	1,420,000	98

¹ Kid crop refers to kids born the previous year.

Angora Goat Inventory – States and United States: January 1, 2013 and 2014

State	2013	2014	2014 as percent of 2013
	(head)	(head)	(percent)
Arizona	27,000	23,000	85
California	3,500	3,400	97
Minnesota	1,000	1,000	100
Missouri	2,700	1,500	56
New England ¹	1,100	(D)	(D)
New Mexico	12,000	9,500	79
Oregon	2,200	2,300	105
Texas	72,000	75,000	104
Wisconsin	1,000	1,000	100
Other States ²	13,500	14,300	(X)
United States	136,000	131,000	96

(D) Withheld to avoid disclosing data for individual operations.

(X) Not applicable.

¹ New England includes Connecticut, Maine, Massachusetts, New Hampshire, Rhode Island, and Vermont.

² Unpublished states.

Mohair Production, Price, and Value – States and United States: 2012 and 2013

State	Goats clipped		Average clip per goat		Production		Price per pound		Value ¹	
	2012	2013	2012	2013	2012	2013	2012	2013	2012	2013
	(head)	(head)	(pounds)	(pounds)	(1,000 pounds)	(1,000 pounds)	(dollars)	(dollars)	(1,000 dollars)	(1,000 dollars)
Arizona	25,000	25,000	4.0	4.0	100	100	1.95	1.35	195	135
California	3,000	3,200	6.7	6.3	20	20	6.00	6.00	120	120
New Mexico	10,500	8,500	4.3	4.1	45	35	2.60	1.60	117	56
Texas	75,000	80,000	6.3	6.1	470	490	4.80	5.50	2,256	2,695
Other States ² ..	22,500	23,800	6.0	6.1	135	145	2.25	2.45	304	355
United States ...	136,000	140,500	5.7	5.6	770	790	3.89	4.25	2,992	3,361

¹ Production multiplied by marketing year average price. United States value is summation of State values.

² Unpublished states.

Milk Goat Inventory – States and United States: January 1, 2013 and 2014

State	2013	2014	2014 as percent of 2013
	(head)	(head)	(percent)
Alabama	3,500	3,500	100
Arizona	3,000	3,000	100
Arkansas	3,800	4,200	111
California	40,500	38,000	94
Colorado	12,200	9,000	74
Florida	6,100	6,200	102
Georgia	3,500	4,000	114
Idaho	4,600	4,000	87
Illinois	4,200	3,000	71
Indiana	12,700	11,800	93
Iowa	29,000	30,000	103
Kansas	4,900	4,800	98
Kentucky	6,000	4,500	75
Louisiana	1,300	1,200	92
Maryland	2,000	2,200	110
Michigan	9,600	10,500	109
Minnesota	13,500	13,000	96
Mississippi	3,300	3,000	91
Missouri	10,000	9,300	93
Montana	2,400	3,000	125
Nebraska	2,800	3,500	125
New England ¹	12,300	13,100	107
New Jersey	2,100	2,100	100
New Mexico	2,700	2,500	93
New York	10,900	13,100	120
North Carolina	6,300	6,800	108
North Dakota	1,000	(D)	(D)
Ohio	9,500	9,500	100
Oklahoma	6,100	5,900	97
Oregon	12,300	11,200	91
Pennsylvania	13,000	12,000	92
South Carolina	3,100	3,100	100
South Dakota	2,100	2,100	100
Tennessee	8,600	8,900	103
Texas	18,000	20,000	111
Utah	2,200	2,500	114
Virginia	5,100	3,300	65
Washington	8,500	8,500	100
West Virginia	2,300	2,000	87
Wisconsin	46,000	46,000	100
Wyoming	1,300	2,000	154
Other States ²	7,700	8,700	(X)
United States	360,000	355,000	99

(D) Withheld to avoid disclosing data for individual operations.

(X) Not applicable.

¹ New England includes Connecticut, Maine, Massachusetts, New Hampshire, Rhode Island, and Vermont.

² Unpublished states.

Meat and Other Goat Inventory – States and United States: January 1, 2013 and 2014

State	2013	2014	2014 as percent of 2013
	(head)	(head)	(percent)
Alabama	42,000	49,000	117
Arizona	25,000	25,000	100
Arkansas	42,000	38,000	90
California	98,500	87,000	88
Colorado	32,000	30,000	94
Florida	54,000	52,000	96
Georgia	64,200	57,500	90
Hawaii	12,000	10,500	88
Idaho	13,500	14,000	104
Illinois	21,000	17,000	81
Indiana	29,000	31,400	108
Iowa	23,500	25,000	106
Kansas	34,000	34,000	100
Kentucky	69,000	72,000	104
Louisiana	23,000	20,000	87
Maryland	11,000	12,600	115
Michigan	18,500	19,500	105
Minnesota	24,600	23,000	93
Mississippi	28,000	24,000	86
Missouri	82,000	84,200	103
Montana	6,700	8,000	119
Nebraska	17,000	17,500	103
Nevada	5,000	7,000	140
New England ¹	13,700	11,000	80
New Jersey	7,500	7,000	93
New Mexico	15,000	17,000	113
New York	28,000	23,000	82
North Carolina	70,000	60,000	86
North Dakota	2,500	2,800	112
Ohio	62,000	60,000	97
Oklahoma	106,000	95,000	90
Oregon	26,600	24,000	90
Pennsylvania	43,000	43,000	100
South Carolina	43,000	41,000	95
South Dakota	7,100	7,300	103
Tennessee	114,000	120,000	105
Texas	850,000	870,000	102
Utah	12,000	11,000	92
Virginia	67,000	50,000	75
Washington	25,000	25,000	100
West Virginia	22,500	20,000	89
Wisconsin	17,000	22,000	129
Wyoming	4,500	4,700	104
Other States ²	3,100	3,000	97
United States	2,315,000	2,275,000	98

¹ New England includes Connecticut, Maine, Massachusetts, New Hampshire, Rhode Island, and Vermont.

² Unpublished states.

Statistical Methodology

Survey Procedures: A random sample of United States producers was surveyed to provide data for these estimates. Survey procedures ensured that all sheep and goat producers, regardless of size, had a chance to be included in the survey. Large producers were sampled more heavily than small operations. About 23,000 operators were contacted during the first half of January by mail, telephone and face-to-face personal interview and 78 percent of the reports were usable. Regardless of when operators responded, they were asked to report inventories as of January 1.

Estimating Procedures: These sheep and goat estimates were prepared by the Agricultural Statistics Board. National and State survey data were reviewed for reasonableness and with estimates from past years. A projected balance sheet for calendar year 2013 was also used. The balance sheet begins with the previous inventory estimate, adds estimates of births and imports, and subtracts estimates of slaughter, exports and deaths. This indicated ending inventory level is compared with the Agricultural Statistics Board estimate for reasonableness.

Revision Policy: Revisions to previous estimates are made to improve the current estimate. Previous year estimates are subject to revision when current estimates are made. Estimates will also be reviewed after data from the Department of Agriculture's five-year Census of Agriculture are available. No revisions will be made after that date.

Reliability: Since all operations raising sheep and goats are not included in the sample, survey estimates are subject to sampling variability. Survey results are also subject to non-sampling errors, such as omissions, duplications, and mistakes in reporting, recording, and processing the data. The effects of these errors cannot be measured directly. They are minimized through rigid quality controls in the data collection process and through a careful review of all reported data for consistency and reasonableness.

To assist users in evaluating reliability of the estimates in this report, the "**Root Mean Square Error**" is shown for selected sheep items in the following table. The "Root Mean Square Error" is a statistical measure based on past performance and is computed using the differences between the first and latest estimates.

The "Root Mean Square Error" for sheep and lamb inventory estimates over the past 10 years is 0.8 percent. This means that chances are 2 out of 3 that the final estimate will not be above or below the current estimate of 5.21 million head by more than 0.8 percent. Chances are 9 out of 10 that the difference will not exceed 1.4 percent.

The "Root Mean Square Error" for sheep shorn over the past 10 years is 1.6 percent. This means that chances are 2 out of 3 that the final estimate will not be above or below the current estimate of 3.70 million head by more than 1.6 percent. Chances are 9 out of 10 that the difference will not exceed 2.9 percent.

Also shown in the table is a 10-year record showing the range between the first inventory estimate and the latest estimate. Using estimates for All Sheep and Lambs as an example, changes between the first inventory estimate and the latest estimate during the past 10 years have averaged 31,000 head, ranging from 0 to 105,000 head. The initial inventory estimate of All Sheep and Lambs has been below the latest estimate 1 time and above the latest estimate 6 times in the last 10 years.

For Sheep and Lambs Shorn, changes between the first inventory estimate and the latest estimate during the past 10 years have averaged 30,000 head, ranging from 0 to 180,000 head. The initial inventory estimate of Sheep and Lambs Shorn has been below the latest estimate 1 time and above 7 times in the last 10 years.

Reliability of January 1 Sheep and Lamb Estimates

[Based on data for the past ten years]

Item	Root mean square error	90 percent confidence level	Difference between first and latest estimate				
			Average	Smallest	Largest	Years	
						Below latest	Above latest
	(percent)	(percent)	(1,000 head)	(1,000 head)	(1,000 head)	(number)	(number)
All sheep and lambs	0.8	1.4	31	0	105	1	6
Breeding sheep	0.8	1.5	26	0	74	1	7
Lamb crop	2.1	3.8	59	0	155	0	7
Sheep shorn	1.6	2.9	30	0	180	1	7
	(percent)	(percent)	(1,000 pounds)	(1,000 pounds)	(1,000 pounds)	(number)	(number)
Wool production	1.3	2.4	174	0	1,100	1	7

Information Contacts

Listed below are the commodity specialists in the Livestock Branch of the National Agricultural Statistics Service to contact for additional information. E-mail inquiries may be sent to nass@nass.usda.gov

Dan Kerestes, Chief, Livestock Branch	(202) 720-3570
Scott Hollis, Head, Livestock Section	(202) 690-2424
Travis Averill – Cattle, Cattle on Feed	(202) 720-3040
Doug Bounds – Hogs and Pigs	(202) 720-3106
Alissa Cowell-Mytar – Sheep and Goats, Honey	(202) 720-4751
Donnie Fike – Dairy Products	(202) 690-3236
Tiffany Hora – Livestock Slaughter	(515) 284-4340
Mike Miller – Milk Production and Milk Cows	(202) 720-3278

Access to NASS Reports

For your convenience, you may access NASS reports and products the following ways:

- All reports are available electronically, at no cost, on the NASS web site: <http://www.nass.usda.gov>
- Both national and state specific reports are available via a free e-mail subscription. To set-up this free subscription, visit <http://www.nass.usda.gov> and in the “Follow NASS” box under “Receive reports by Email,” click on “National” or “State” to select the reports you would like to receive.

For more information on NASS surveys and reports, call the NASS Agricultural Statistics Hotline at (800) 727-9540, 7:30 a.m. to 4:00 p.m. ET, or e-mail: nass@nass.usda.gov.

The U.S. Department of Agriculture (USDA) prohibits discrimination against its customers, employees, and applicants for employment on the bases of race, color, national origin, age, disability, sex, gender identity, religion, reprisal, and where applicable, political beliefs, marital status, familial or parental status, sexual orientation, or all or part of an individual's income is derived from any public assistance program, or protected genetic information in employment or in any program or activity conducted or funded by the Department. (Not all prohibited bases will apply to all programs and/or employment activities.)

If you wish to file a Civil Rights program complaint of discrimination, complete the [USDA Program Discrimination Complaint Form](#) (PDF), found online at http://www.ascr.usda.gov/complaint_filing_cust.html, or at any USDA office, or call (866) 632-9992 to request the form. You may also write a letter containing all of the information requested in the form. Send your completed complaint form or letter to us by mail at U.S. Department of Agriculture, Director, Office of Adjudication, 1400 Independence Avenue, S.W., Washington, D.C. 20250-9410, by fax (202) 690-7442 or email at program.intake@usda.gov.



United States
Department of Agriculture

Agricultural Outlook Forum

February 20-21, 2014
Crystal Gateway Marriott Hotel
Arlington, Virginia

The Changing Face of Agriculture

USDA's annual event brings together leadership
from throughout the agricultural community to discuss the

Changing Face of Agriculture.

Session topics include:

New Agricultural Census
Agriculture Supporting Our Veterans
Women in Agriculture
Agriculture & Social Media
Food Price and Farm Income Outlooks
Commodity and Weather Outlooks
U.S. Farm Land
International Trade
Conservation
Nutrition & Food Safety
Nanotechnology
Invasive Pests
Know Your Farmer, Know Your Food
Agroforestry
Climate Variability
Rural Economies
Disease Challenges & the Citrus Industry
Extension's 100-Year Anniversary

www.usda.gov/oce/forum

