



Sheep and Goats

ISSN: 1949-1611

Released February 28, 2019, by the National Agricultural Statistics Service (NASS), Agricultural Statistics Board, United States Department of Agriculture (USDA).

January 1 Sheep and Lambs Inventory Down 1 Percent

All sheep and lambs inventory in the United States on January 1, 2019 totaled 5.23 million head, down 1 percent from 2018. Breeding sheep inventory at 3.82 million head on January 1, 2019, decreased 1 percent from 3.87 million head on January 1, 2018. Ewes one year old and older, at 3.00 million head, were 1 percent below last year. Market sheep and lambs on January 1, 2019 totaled 1.41 million head, up 1 percent from January 1, 2018. Market lambs comprised 94 percent of the total market inventory. Market sheep comprised the remaining 6 percent of total market inventory.

The 2018 lamb crop of 3.24 million head was up slightly from 2017. The 2018 lambing rate was 107 lambs per 100 ewes one year old and older on January 1, 2018, up 1 percent from 2017.

Shorn wool production in the United States during 2018 was 24.4 million pounds, down 2 percent from 2017. Sheep and lambs shorn totaled 3.37 million head, down 2 percent from 2017. The average price paid for wool sold in 2018 was \$1.75 per pound for a total value of 42.8 million dollars, up 16 percent from 36.8 million dollars in 2017.

Sheep death loss during 2018 totaled 216 thousand head, up 1 percent from 2017. Lamb death loss increased 6 percent from 367 thousand head to 388 thousand head in 2018.

January 1 All Goats and Kids Inventory Down 1 Percent

All goats and kids inventory in the United States on January 1, 2019 totaled 2.62 million head, down 1 percent from 2018. Breeding goat inventory totaled 2.15 million head, down 1 percent from 2018. Does one year old and older, at 1.60 million head, were 1 percent below last year's number. Market goats and kids totaled 474 thousand head, up 2 percent from a year ago.

Kid crop for 2018 totaled 1.64 million head for all goats, up slightly from 2017.

Meat and all other goats totaled 2.06 million head on January 1, 2019, down 1 percent from 2018. Milk goat inventory was 430 thousand head, up 2 percent from January 1, 2018, while Angora goats were down 5 percent, totaling 137 thousand head.

Mohair production in the United States during 2018 was 755 thousand pounds. Goats and kids clipped totaled 133 thousand head. Average weight per clip was 5.7 pounds. Mohair price was \$5.25 per pound with a value of 3.96 million dollars.

Sheep and Goats Revisions

All sheep and goats inventory and lamb and kid crop estimates for January 1, 2018, were reviewed using official slaughter, import and export data, and the relationship of new survey information to the prior surveys. A revision of less than 1 percent was made to goats and kids inventory and kid crop at the United States level. A revision of less than 1 percent was made to sheep and lambs inventory and lamb crop. State level estimates were reviewed and changes were made to reallocate inventory estimates to the United States total.

This page intentionally left blank

Contents

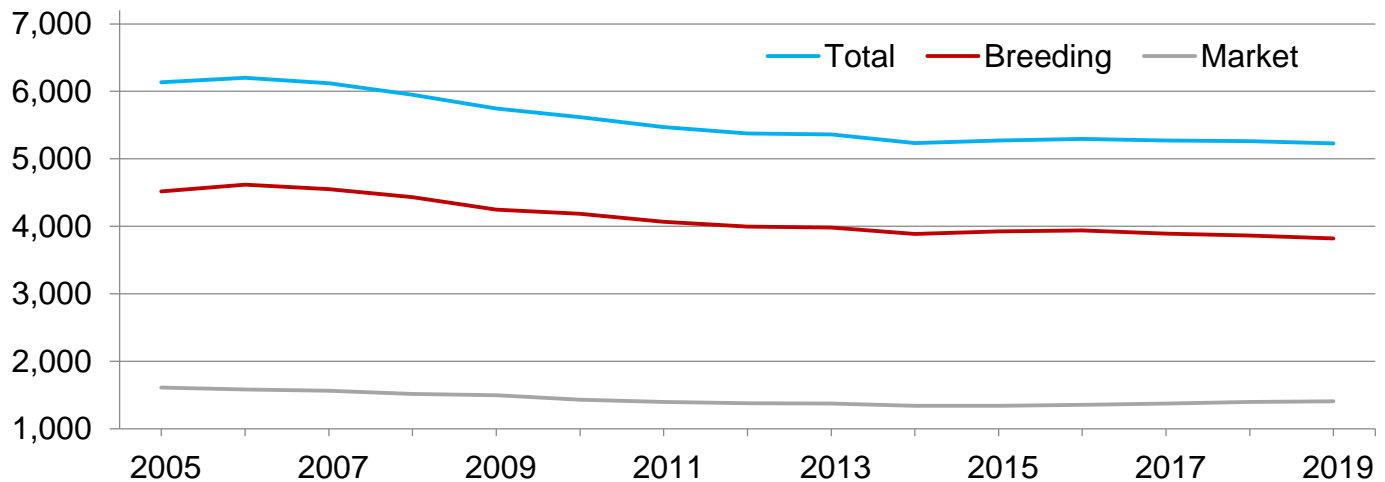
Sheep and Lambs Inventory by Class – United States: January 1, 2018 and 2019.....	4
All Sheep and Lambs Inventory – United States: January 1.....	4
Wool Production, Price, and Value – United States: 2017 and 2018.....	4
Sheep and Lambs Inventory by Class – States and United States: January 1, 2018 and 2019	5
Breeding Sheep and Lambs Inventory by Class – States and United States: January 1, 2018 and 2019.....	6
Lamb Crop – States and United States: 2017 and 2018.....	7
Market Sheep and Lambs Inventory by Weight Group – States and United States: January 1, 2018	8
Market Sheep and Lambs Inventory by Weight Group – States and United States: January 1, 2019	9
Sheep and Lambs Farm Slaughter and Death Loss – States and United States: 2017 and 2018	10
Wool Production – States and United States: 2017 and 2018.....	11
Wool Price and Value – States and United States: 2017 and 2018.....	12
Goats and Kids Inventory by Class – United States: January 1, 2018 and 2019	13
All Goats and Kids Inventory by Class – United States: January 1.....	13
Angora Goats and Kids Inventory by Class – United States: January 1, 2018 and 2019	14
Milk Goats and Kids Inventory by Class – United States: January 1, 2018 and 2019.....	14
Meat and Other Goats and Kids Inventory by Class – United States: January 1, 2018 and 2019	14
Angora Goats and Kids Inventory – States and United States: January 1, 2018 and 2019.....	15
Mohair Production, Price, and Value – States and United States: 2017 and 2018	15
Milk Goats and Kids Inventory – States and United States: January 1, 2018 and 2019.....	16
Meat and Other Goats and Kids Inventory – States and United States: January 1, 2018 and 2019.....	17
Statistical Methodology	18
Reliability of January 1 Sheep and Lambs Estimates	19
Information Contacts	19

Sheep and Lambs Inventory by Class – United States: January 1, 2018 and 2019

Class	2018	2019	2019 as percent of 2018
	(1,000 head)	(1,000 head)	(percent)
All sheep and lambs	5,265.0	5,230.0	99
Breeding sheep and lambs	3,865.0	3,820.0	99
Replacement lambs under one year old	662.0	650.0	98
Ewes - one year old and older	3,033.0	3,000.0	99
Rams - one year old and older	170.0	170.0	100
Market sheep and lambs	1,400.0	1,410.0	101

All Sheep and Lambs Inventory – United States: January 1

Thousand head



Wool Production, Price, and Value – United States: 2017 and 2018

Year	Sheep shorn ¹	Weight per fleece	Shorn wool production	Price per pound	Value
	(1,000 head)	(pounds)	(1,000 pounds)	(dollars)	(1,000 dollars)
2017	3,435	7.2	24,810	1.48	36,774
2018	3,372	7.2	24,400	1.75	42,772

¹ Includes shearing at commercial feeding yards.

Sheep and Lambs Inventory by Class – States and United States: January 1, 2018 and 2019

State	All sheep and lambs			Total breeding		Total market	
	2018	2019	2019 as percent of 2018	2018	2019	2018	2019
	(1,000 head)	(1,000 head)	(percent)	(1,000 head)	(1,000 head)	(1,000 head)	(1,000 head)
Arizona	125.0	115.0	92	90.0	86.0	35.0	29.0
California	570.0	550.0	96	315.0	305.0	255.0	245.0
Colorado	445.0	420.0	94	195.0	185.0	250.0	235.0
Idaho	235.0	220.0	94	185.0	170.0	50.0	50.0
Illinois	55.0	53.0	96	46.0	45.0	9.0	8.0
Indiana	57.0	60.0	105	50.0	52.0	7.0	8.0
Iowa	165.0	153.0	93	115.0	103.0	50.0	50.0
Kansas	67.0	72.0	107	42.0	47.0	25.0	25.0
Kentucky	58.0	64.0	110	46.0	49.0	12.0	15.0
Michigan	80.0	86.0	108	57.0	62.0	23.0	24.0
Minnesota	130.0	125.0	96	90.0	90.0	40.0	35.0
Missouri	100.0	100.0	100	80.0	80.0	20.0	20.0
Montana	225.0	215.0	96	195.0	183.0	30.0	32.0
Nebraska	80.0	75.0	94	67.0	64.0	13.0	11.0
Nevada	61.0	63.0	103	54.0	55.0	7.0	8.0
New England ¹	49.0	48.0	98	40.0	40.0	9.0	8.0
New Mexico	96.0	100.0	104	80.0	81.0	16.0	19.0
New York	85.0	80.0	94	71.0	67.0	14.0	13.0
North Carolina	27.0	29.0	107	21.0	23.0	6.0	6.0
North Dakota	70.0	72.0	103	49.0	45.0	21.0	27.0
Ohio	119.0	121.0	102	95.0	94.0	24.0	27.0
Oklahoma	54.0	50.0	93	42.0	39.0	12.0	11.0
Oregon	165.0	175.0	106	120.0	120.0	45.0	55.0
Pennsylvania	96.0	95.0	99	78.0	77.0	18.0	18.0
South Dakota	250.0	255.0	102	190.0	194.0	60.0	61.0
Tennessee	46.0	48.0	104	38.0	38.0	8.0	10.0
Texas	750.0	750.0	100	600.0	590.0	150.0	160.0
Utah	275.0	290.0	105	250.0	260.0	25.0	30.0
Virginia	75.0	79.0	105	57.0	61.0	18.0	18.0
Washington	45.0	50.0	111	35.0	37.0	10.0	13.0
West Virginia	35.0	32.0	91	28.0	26.0	7.0	6.0
Wisconsin	75.0	75.0	100	63.0	63.0	12.0	12.0
Wyoming	345.0	350.0	101	260.0	265.0	85.0	85.0
Other States ²	155.0	160.0	103	121.0	124.0	34.0	36.0
United States	5,265.0	5,230.0	99	3,865.0	3,820.0	1,400.0	1,410.0

¹ New England includes Connecticut, Maine, Massachusetts, New Hampshire, Rhode Island, and Vermont.

² Includes data for States not published in this table.

Breeding Sheep and Lambs Inventory by Class – States and United States: January 1, 2018 and 2019

State	Breeding sheep				Replacement lambs		Total breeding sheep and lambs	
	Ewes		Rams		2018	2019	2018	2019
	2018	2019	2018	2019				
	(1,000 head)	(1,000 head)	(1,000 head)	(1,000 head)	(1,000 head)	(1,000 head)	(1,000 head)	(1,000 head)
Arizona	67.0	63.0	5.0	4.0	18.0	19.0	90.0	86.0
California	260.0	250.0	10.0	10.0	45.0	45.0	315.0	305.0
Colorado	156.0	150.0	6.0	6.0	33.0	29.0	195.0	185.0
Idaho	141.0	130.0	5.0	5.0	39.0	35.0	185.0	170.0
Illinois	36.0	35.0	2.0	2.0	8.0	8.0	46.0	45.0
Indiana	38.0	40.0	4.0	4.0	8.0	8.0	50.0	52.0
Iowa	91.0	80.0	5.0	4.0	19.0	19.0	115.0	103.0
Kansas	34.0	37.0	2.0	2.5	6.0	7.5	42.0	47.0
Kentucky	36.0	37.0	2.0	2.5	8.0	9.5	46.0	49.0
Michigan	41.0	45.0	3.0	3.0	13.0	14.0	57.0	62.0
Minnesota	74.0	74.0	4.0	4.0	12.0	12.0	90.0	90.0
Missouri	63.0	63.0	3.0	3.0	14.0	14.0	80.0	80.0
Montana	150.0	141.0	6.0	6.0	39.0	36.0	195.0	183.0
Nebraska	55.0	53.0	3.0	3.0	9.0	8.0	67.0	64.0
Nevada	43.0	44.0	2.0	2.0	9.0	9.0	54.0	55.0
New England ¹	30.0	30.0	2.0	3.0	8.0	7.0	40.0	40.0
New Mexico	58.0	61.0	6.0	5.0	16.0	15.0	80.0	81.0
New York	55.0	51.0	3.0	3.0	13.0	13.0	71.0	67.0
North Carolina	16.0	18.0	2.0	2.0	3.0	3.0	21.0	23.0
North Dakota	39.0	36.0	2.0	2.0	8.0	7.0	49.0	45.0
Ohio	73.0	72.0	6.0	6.0	16.0	16.0	95.0	94.0
Oklahoma	31.0	30.0	3.0	3.0	8.0	6.0	42.0	39.0
Oregon	94.0	95.0	6.0	6.0	20.0	19.0	120.0	120.0
Pennsylvania	60.0	60.0	5.0	5.0	13.0	12.0	78.0	77.0
South Dakota	153.0	157.0	6.0	6.0	31.0	31.0	190.0	194.0
Tennessee	29.0	29.0	2.0	3.0	7.0	6.0	38.0	38.0
Texas	465.0	455.0	35.0	35.0	100.0	100.0	600.0	590.0
Utah	200.0	210.0	8.0	9.0	42.0	41.0	250.0	260.0
Virginia	45.0	48.0	3.0	3.0	9.0	10.0	57.0	61.0
Washington	27.0	28.0	2.0	2.0	6.0	7.0	35.0	37.0
West Virginia	23.0	21.0	1.0	1.0	4.0	4.0	28.0	26.0
Wisconsin	48.0	48.0	3.0	3.0	12.0	12.0	63.0	63.0
Wyoming	210.0	215.0	7.0	7.0	43.0	43.0	260.0	265.0
Other States ²	92.0	94.0	6.0	5.0	23.0	25.0	121.0	124.0
United States	3,033.0	3,000.0	170.0	170.0	662.0	650.0	3,865.0	3,820.0

¹ New England includes Connecticut, Maine, Massachusetts, New Hampshire, Rhode Island, and Vermont.

² Includes data for States not published in this table.

Lamb Crop – States and United States: 2017 and 2018

State	Ewes 1 year and older January 1		Lambs per 100 ewes January 1		Lamb crop ¹		
	2017	2018	2017	2018	2017	2018	2018 as percent of 2017
	(1,000 head)	(1,000 head)	(number)	(number)	(1,000 head)	(1,000 head)	(percent)
Arizona	68.0	67.0	60	66	41.0	44.0	107
California	275.0	260.0	85	90	235.0	235.0	100
Colorado	160.0	156.0	116	119	185.0	185.0	100
Idaho	138.0	141.0	116	113	160.0	160.0	100
Illinois	36.0	36.0	119	114	43.0	41.0	95
Indiana	38.0	38.0	121	121	46.0	46.0	100
Iowa	95.0	91.0	121	121	115.0	110.0	96
Kansas	36.0	34.0	119	129	43.0	44.0	102
Kentucky	33.0	36.0	106	103	35.0	37.0	106
Michigan	44.0	41.0	111	122	49.0	50.0	102
Minnesota	72.0	74.0	125	122	90.0	90.0	100
Missouri	59.0	63.0	132	124	78.0	78.0	100
Montana	159.0	150.0	119	120	190.0	180.0	95
Nebraska	58.0	55.0	121	118	70.0	65.0	93
Nevada	43.0	43.0	79	88	34.0	38.0	112
New England ²	27.0	30.0	122	117	33.0	35.0	106
New Mexico	59.0	58.0	76	83	45.0	48.0	107
New York	51.0	55.0	114	104	58.0	57.0	98
North Carolina	19.0	16.0	95	106	18.0	17.0	94
North Dakota	42.0	39.0	117	115	49.0	45.0	92
Ohio	70.0	73.0	126	121	88.0	88.0	100
Oklahoma	29.0	31.0	114	103	33.0	32.0	97
Oregon	101.0	94.0	114	120	115.0	113.0	98
Pennsylvania	59.0	60.0	114	110	67.0	66.0	99
South Dakota	146.0	153.0	134	131	195.0	200.0	103
Tennessee	29.0	29.0	121	114	35.0	33.0	94
Texas	440.0	465.0	82	78	360.0	365.0	101
Utah	205.0	200.0	112	118	230.0	235.0	102
Virginia	49.0	45.0	120	131	59.0	59.0	100
Washington	28.0	27.0	107	119	30.0	32.0	107
West Virginia	23.0	23.0	117	113	27.0	26.0	96
Wisconsin	48.0	48.0	119	119	57.0	57.0	100
Wyoming	225.0	210.0	104	114	235.0	240.0	102
Other States ³	94.0	92.0	87	91	82.0	84.0	102
United States	3,058.0	3,033.0	106	107	3,230.0	3,235.0	100

¹ Lamb crop is defined as lambs born in the Eastern States and lambs docked or branded in the Western States.

² New England includes Connecticut, Maine, Massachusetts, New Hampshire, Rhode Island, and Vermont.

³ Includes data for States not published in this table.

Market Sheep and Lambs Inventory by Weight Group – States and United States: January 1, 2018

State	Market lambs					Market sheep	Total market sheep and lambs
	Under 65 pounds	65 - 84 pounds	85 - 105 pounds	Over 105 pounds	Total		
	(1,000 head)	(1,000 head)	(1,000 head)	(1,000 head)	(1,000 head)	(1,000 head)	(1,000 head)
Arizona	10.0	2.0	11.0	7.0	30.0	5.0	35.0
California	105.0	30.0	45.0	65.0	245.0	10.0	255.0
Colorado	4.0	24.0	66.0	153.0	247.0	3.0	250.0
Idaho	2.0	5.0	10.0	31.0	48.0	2.0	50.0
Illinois	3.5	2.0	1.0	1.5	8.0	1.0	9.0
Indiana	3.0	1.0	1.0	1.0	6.0	1.0	7.0
Iowa	8.0	7.0	12.0	21.0	48.0	2.0	50.0
Kansas	8.5	1.7	2.8	9.0	22.0	3.0	25.0
Kentucky	5.2	2.8	2.0	1.0	11.0	1.0	12.0
Michigan	3.0	5.0	5.0	8.0	21.0	2.0	23.0
Minnesota	8.0	7.0	9.0	15.0	39.0	1.0	40.0
Missouri	6.0	5.0	4.0	3.0	18.0	2.0	20.0
Montana	1.0	9.0	8.0	11.0	29.0	1.0	30.0
Nebraska	3.1	1.9	2.4	4.6	12.0	1.0	13.0
Nevada	1.0	1.0	2.0	2.0	6.0	1.0	7.0
New England ¹	2.2	1.4	1.0	1.4	6.0	3.0	9.0
New Mexico	4.0	3.0	4.0	3.0	14.0	2.0	16.0
New York	4.0	5.0	2.0	1.0	12.0	2.0	14.0
North Carolina	3.1	1.0	0.6	0.3	5.0	1.0	6.0
North Dakota	4.0	5.0	6.0	5.0	20.0	1.0	21.0
Ohio	7.0	6.0	5.0	5.0	23.0	1.0	24.0
Oklahoma	7.0	1.5	1.5	1.0	11.0	1.0	12.0
Oregon	4.0	7.0	10.0	23.0	44.0	1.0	45.0
Pennsylvania	7.0	4.0	2.0	1.0	14.0	4.0	18.0
South Dakota	8.0	8.0	13.0	29.0	58.0	2.0	60.0
Tennessee	4.5	1.5	0.6	0.4	7.0	1.0	8.0
Texas	85.0	25.0	10.0	20.0	140.0	10.0	150.0
Utah	3.0	4.0	5.0	9.0	21.0	4.0	25.0
Virginia	7.5	4.5	4.0	1.0	17.0	1.0	18.0
Washington	2.5	3.0	1.5	2.0	9.0	1.0	10.0
West Virginia	3.0	1.0	1.0	1.0	6.0	1.0	7.0
Wisconsin	3.0	2.0	2.0	4.0	11.0	1.0	12.0
Wyoming	1.0	13.0	36.0	31.0	81.0	4.0	85.0
Other States ²	14.9	5.7	6.6	3.8	31.0	3.0	34.0
United States	346.0	206.0	293.0	475.0	1,320.0	80.0	1,400.0

¹ New England includes Connecticut, Maine, Massachusetts, New Hampshire, Rhode Island, and Vermont.

² Includes data for States not published in this table.

Market Sheep and Lambs Inventory by Weight Group – States and United States: January 1, 2019

State	Market lambs					Market sheep	Total market sheep and lambs
	Under 65 pounds	65 - 84 pounds	85 - 105 pounds	Over 105 pounds	Total		
	(1,000 head)	(1,000 head)	(1,000 head)	(1,000 head)	(1,000 head)	(1,000 head)	(1,000 head)
Arizona	11.0	2.0	5.0	7.0	25.0	4.0	29.0
California	100.0	30.0	40.0	65.0	235.0	10.0	245.0
Colorado	5.0	20.0	60.0	148.0	233.0	2.0	235.0
Idaho	3.0	4.0	9.0	31.0	47.0	3.0	50.0
Illinois	3.0	2.0	1.0	1.0	7.0	1.0	8.0
Indiana	3.0	2.0	1.0	1.0	7.0	1.0	8.0
Iowa	7.0	6.0	14.0	20.0	47.0	3.0	50.0
Kansas	10.0	1.7	2.8	7.5	22.0	3.0	25.0
Kentucky	6.0	3.0	2.0	2.0	13.0	2.0	15.0
Michigan	3.0	6.0	5.0	8.0	22.0	2.0	24.0
Minnesota	9.0	6.0	8.0	11.0	34.0	1.0	35.0
Missouri	6.0	5.0	4.0	3.0	18.0	2.0	20.0
Montana	2.0	8.0	13.0	7.0	30.0	2.0	32.0
Nebraska	2.7	1.7	2.6	3.0	10.0	1.0	11.0
Nevada	1.0	1.0	2.0	3.0	7.0	1.0	8.0
New England ¹	2.0	1.4	1.6	1.0	6.0	2.0	8.0
New Mexico	5.0	6.0	4.0	2.0	17.0	2.0	19.0
New York	3.0	4.0	3.0	1.0	11.0	2.0	13.0
North Carolina	2.8	1.4	0.7	0.1	5.0	1.0	6.0
North Dakota	2.0	8.0	9.0	7.0	26.0	1.0	27.0
Ohio	8.0	6.0	5.0	7.0	26.0	1.0	27.0
Oklahoma	7.0	1.0	1.0	1.0	10.0	1.0	11.0
Oregon	7.0	7.0	10.0	28.0	52.0	3.0	55.0
Pennsylvania	8.0	3.0	2.0	1.0	14.0	4.0	18.0
South Dakota	8.0	10.0	16.0	25.0	59.0	2.0	61.0
Tennessee	5.5	1.8	1.3	0.4	9.0	1.0	10.0
Texas	95.0	25.0	10.0	20.0	150.0	10.0	160.0
Utah	2.0	2.0	11.0	13.0	28.0	2.0	30.0
Virginia	7.0	6.0	2.0	1.0	16.0	2.0	18.0
Washington	3.0	3.0	2.0	3.0	11.0	2.0	13.0
West Virginia	2.0	1.0	1.0	1.0	5.0	1.0	6.0
Wisconsin	3.0	2.0	2.0	4.0	11.0	1.0	12.0
Wyoming	1.0	12.0	32.0	38.0	83.0	2.0	85.0
Other States ²	15.0	6.0	7.0	4.0	32.0	4.0	36.0
United States	358.0	205.0	290.0	475.0	1,328.0	82.0	1,410.0

¹ New England includes Connecticut, Maine, Massachusetts, New Hampshire, Rhode Island, and Vermont.

² Includes data for States not published in this table.

Sheep and Lambs Farm Slaughter and Death Loss – States and United States: 2017 and 2018

State	Farm slaughter ¹		Deaths			
			Sheep		Lambs	
	2017	2018	2017	2018	2017	2018
	(1,000 head)	(1,000 head)	(1,000 head)	(1,000 head)	(1,000 head)	(1,000 head)
Arizona	13.0	14.0	9.0	8.0	6.0	4.0
California	4.6	4.5	15.0	15.0	13.0	12.0
Colorado	2.8	2.3	11.0	11.0	18.0	14.0
Idaho	2.6	2.1	8.0	7.0	8.0	9.0
Illinois	2.1	1.9	2.5	2.5	6.0	5.0
Indiana	3.2	2.8	3.0	3.0	6.0	7.0
Iowa	1.5	1.1	7.0	7.0	15.0	16.0
Kansas	2.3	1.7	2.5	3.0	5.5	6.0
Kentucky	1.1	1.2	2.3	2.5	5.0	6.5
Michigan	2.0	2.0	3.0	3.0	6.0	7.0
Minnesota	3.1	2.7	7.0	8.0	16.0	17.0
Missouri	1.1	1.1	4.0	4.0	10.0	10.0
Montana	1.9	1.9	11.0	11.0	16.0	17.0
Nebraska	0.7	0.8	3.7	3.1	8.0	7.5
Nevada	1.4	1.4	3.0	3.0	8.0	8.0
New England ²	2.0	2.2	1.4	2.0	3.0	2.6
New Mexico	5.5	5.6	5.0	5.5	5.0	5.0
New York	2.3	2.1	3.0	4.0	7.0	6.0
North Carolina	0.6	0.8	1.0	1.2	2.0	2.2
North Dakota	0.7	0.8	2.0	2.0	6.0	6.0
Ohio	3.0	2.3	6.0	6.0	11.0	12.0
Oklahoma	2.0	2.0	3.0	3.0	6.0	5.0
Oregon	4.1	3.8	7.0	5.0	6.0	5.0
Pennsylvania	1.5	1.5	4.0	4.0	9.0	10.0
South Dakota	1.2	1.2	8.0	8.5	21.0	23.0
Tennessee	1.1	1.1	2.5	2.5	5.5	6.5
Texas	2.5	2.5	38.0	39.0	70.0	80.0
Utah	6.1	5.6	9.0	10.0	16.0	21.0
Virginia	2.6	2.6	3.5	3.5	9.0	9.5
Washington	6.1	6.1	2.0	2.0	2.0	2.0
West Virginia	1.0	0.2	2.0	2.2	4.0	4.2
Wisconsin	1.5	1.5	3.0	3.0	7.0	7.0
Wyoming	2.5	2.5	9.0	9.5	10.0	13.0
Other States ³	6.4	6.3	11.6	12.0	21.0	22.0
United States	96.1	92.2	213.0	216.0	367.0	388.0

¹ Excludes custom slaughter for farmers at commercial establishments.

² New England includes Connecticut, Maine, Massachusetts, New Hampshire, Rhode Island, and Vermont.

³ Includes data for States not published in this table.

Wool Production – States and United States: 2017 and 2018

State	Sheep shorn		Weight per fleece		Production	
	2017 (1,000 head)	2018 (1,000 head)	2017 (pounds)	2018 (pounds)	2017 (1,000 pounds)	2018 (1,000 pounds)
Arizona	90.0	83.0	6.8	6.9	610	570
California	400.0	380.0	6.3	6.3	2,500	2,400
Colorado	310.0	315.0	6.8	7.0	2,100	2,200
Idaho	185.0	170.0	8.6	8.8	1,600	1,500
Illinois	33.0	32.0	6.1	6.3	200	200
Indiana	38.0	42.0	5.9	6.0	225	250
Iowa	140.0	140.0	5.6	5.4	780	760
Kansas	43.0	43.0	6.6	6.4	285	275
Kentucky	11.0	11.0	6.8	6.8	75	75
Michigan	59.0	55.0	5.8	5.9	345	325
Minnesota	112.0	102.0	6.3	6.3	700	640
Missouri	36.0	40.0	6.1	5.8	220	230
Montana	195.0	180.0	9.0	8.9	1,750	1,610
Nebraska	62.0	58.0	7.1	7.1	440	410
Nevada	46.0	47.0	9.3	9.6	430	450
New England ¹	31.0	27.0	6.8	6.7	210	180
New Mexico	81.0	82.0	7.6	7.6	615	625
New York	48.0	46.0	6.3	5.9	300	270
North Carolina	6.0	6.0	5.8	5.5	35	33
North Dakota	61.0	59.0	6.9	6.9	420	410
Ohio	80.0	79.0	5.8	5.8	460	460
Oklahoma	18.0	19.0	5.6	5.5	100	105
Oregon	130.0	130.0	6.4	6.4	830	830
Pennsylvania	47.0	46.0	6.7	6.7	315	310
South Dakota	230.0	230.0	7.6	7.6	1,750	1,750
Tennessee	10.0	10.0	5.5	5.0	55	50
Texas	240.0	240.0	7.5	7.3	1,800	1,760
Utah	245.0	245.0	9.0	9.1	2,200	2,220
Virginia	23.0	24.0	5.9	6.0	135	145
Washington	31.0	33.0	8.4	8.0	260	265
West Virginia	18.0	17.0	5.8	5.4	105	92
Wisconsin	50.0	50.0	6.6	6.6	330	330
Wyoming	280.0	285.0	8.4	8.4	2,350	2,400
Other States ²	46.0	46.0	6.1	5.9	280	270
United States	3,435.0	3,372.0	7.2	7.2	24,810	24,400

¹ New England includes Connecticut, Maine, Massachusetts, New Hampshire, Rhode Island, and Vermont.

² Includes data for States not published in this table.

Wool Price and Value – States and United States: 2017 and 2018

[United States value may not add due to rounding]

State	Price per pound		Value ¹	
	2017 (dollars)	2018 (dollars)	2017 (1,000 dollars)	2018 (1,000 dollars)
Arizona	0.90	1.20	549	684
California	1.55	2.00	3,875	4,800
Colorado	1.80	2.10	3,780	4,620
Idaho	1.70	2.02	2,720	3,030
Illinois	0.70	0.65	140	130
Indiana	0.60	0.55	135	138
Iowa	0.52	0.59	406	448
Kansas	0.85	0.95	242	261
Kentucky	0.90	0.80	68	60
Michigan	0.60	0.65	207	211
Minnesota	0.60	0.67	420	429
Missouri	0.86	0.60	189	138
Montana	1.90	2.50	3,325	4,025
Nebraska	0.79	0.88	348	361
Nevada	2.00	2.20	860	990
New England ²	0.90	0.85	189	153
New Mexico	1.60	2.10	984	1,313
New York	0.90	0.90	270	243
North Carolina	1.10	1.20	39	40
North Dakota	1.09	1.32	458	541
Ohio	0.50	0.40	230	184
Oklahoma	0.80	0.70	80	74
Oregon	1.65	1.65	1,370	1,370
Pennsylvania	0.60	0.60	189	186
South Dakota	1.49	1.83	2,608	3,203
Tennessee	0.90	0.80	50	40
Texas	1.63	1.80	2,934	3,168
Utah	1.80	2.00	3,960	4,440
Virginia	1.45	1.40	196	203
Washington	1.90	2.10	494	557
West Virginia	1.45	1.40	152	129
Wisconsin	0.65	0.60	215	198
Wyoming	2.00	2.50	4,700	6,000
Other States ³	1.40	1.50	392	405
United States	1.48	1.75	36,774	42,772

¹ Production multiplied by marketing year average price. United States value is the summation of State values.

² New England includes Connecticut, Maine, Massachusetts, New Hampshire, Rhode Island, and Vermont.

³ Includes data for States not published in this table.

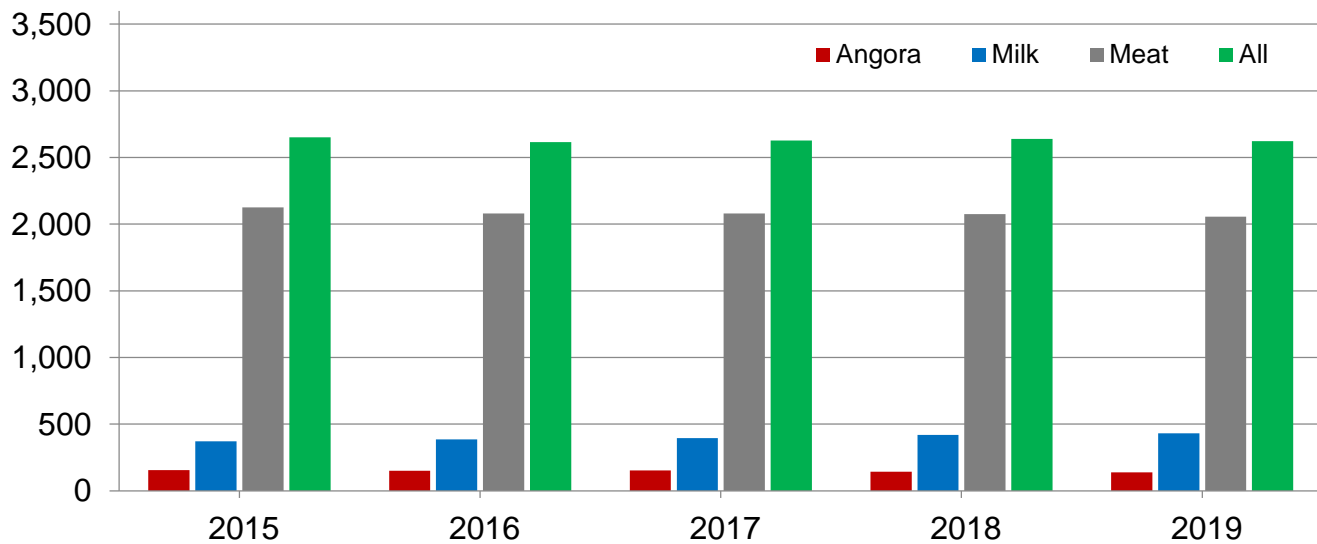
Goats and Kids Inventory by Class – United States: January 1, 2018 and 2019

Class	2018	2019	2019 as percent of 2018
	(head)	(head)	(percent)
All goats and kids	2,639,000	2,622,000	99
All, breeding goats	2,176,000	2,148,000	99
Replacement kids - under one year	396,000	393,000	99
Does - one year old and older	1,617,000	1,595,000	99
Bucks - one year old and older	163,000	160,000	98
All, market goats and kids	463,000	474,000	102
Kid crop ¹	1,636,000	1,638,000	100

¹ Kid crop refers to kids born the previous year.

All Goats and Kids Inventory by Class – United States: January 1

Thousand head



Angora Goats and Kids Inventory by Class – United States: January 1, 2018 and 2019

Class	2018	2019	2019 as percent of 2018
	(head)	(head)	(percent)
Angora goats and kids	144,000	137,000	95
Angora, breeding goats	125,000	117,000	94
Replacement kids - under one year	20,000	19,000	95
Does - one year old and older	98,000	92,000	94
Bucks - one year old and older	7,000	6,000	86
Angora, market goats and kids	19,000	20,000	105
Kid crop ¹	76,000	72,000	95

¹ Kid crop refers to kids born the previous year.

Milk Goats and Kids Inventory by Class – United States: January 1, 2018 and 2019

Class	2018	2019	2019 as percent of 2018
	(head)	(head)	(percent)
Milk goats and kids	420,000	430,000	102
Milk, breeding goats	376,000	385,000	102
Replacement kids - under one year	80,000	82,000	103
Does - one year old and older	269,000	276,000	103
Bucks - one year old and older	27,000	27,000	100
Milk, market goats and kids	44,000	45,000	102
Kid crop ¹	285,000	296,000	104

¹ Kid crop refers to kids born the previous year.

Meat and Other Goats and Kids Inventory by Class – United States: January 1, 2018 and 2019

Class	2018	2019	2019 as percent of 2018
	(head)	(head)	(percent)
Meat and other goats and kids	2,075,000	2,055,000	99
Meat and other, breeding goats	1,675,000	1,646,000	98
Replacement kids - under one year	296,000	292,000	99
Does - one year old and older	1,250,000	1,227,000	98
Bucks - one year old and older	129,000	127,000	98
Meat and other, market goats and kids	400,000	409,000	102
Kid crop ¹	1,275,000	1,270,000	100

¹ Kid crop refers to kids born the previous year.

Angora Goats and Kids Inventory – States and United States: January 1, 2018 and 2019

State	2018	2019	2019 as percent of 2018
	(head)	(head)	(percent)
Arizona	30,000	27,000	90
California	3,500	3,000	86
New Mexico	9,500	9,000	95
Texas	75,000	75,000	100
Other States ¹	26,000	23,000	88
United States	144,000	137,000	95

¹ Includes data for States not published in this table.

Mohair Production, Price, and Value – States and United States: 2017 and 2018

[United States value may not add due to rounding]

State	Goats clipped		Average clip per goat		Production		Price per pound		Value ¹	
	2017	2018	2017	2018	2017	2018	2017	2018	2017	2018
	(head)	(head)	(pounds)	(pounds)	(1,000 pounds)	(1,000 pounds)	(dollars)	(dollars)	(1,000 dollars)	(1,000 dollars)
Arizona	27,000	28,000	3.9	4.5	105	125	1.20	1.30	126	163
California	2,000	2,000	5.0	5.0	10	10	6.00	6.00	60	60
New Mexico	7,000	7,000	4.3	4.3	30	30	1.40	1.60	42	48
Texas	77,000	75,000	6.1	6.2	470	465	6.60	7.20	3,102	3,348
Other States ² ..	21,000	21,000	6.0	6.0	125	125	2.65	2.75	331	344
United States ...	134,000	133,000	5.5	5.7	740	755	4.95	5.25	3,661	3,963

¹ Production multiplied by marketing year average price. United States value is summation of State values.

² Includes data for States not published in this table.

Milk Goats and Kids Inventory – States and United States: January 1, 2018 and 2019

State	2018	2019	2019 as percent of 2018
	(head)	(head)	(percent)
Alabama	3,500	4,000	114
Arkansas	4,000	4,000	100
California	40,000	42,000	105
Colorado	9,000	10,000	111
Florida	10,000	8,500	85
Georgia	7,100	8,500	120
Idaho	8,000	7,000	88
Illinois	10,000	11,000	110
Indiana	11,000	12,000	109
Iowa	31,000	32,000	103
Kansas	4,400	4,000	91
Kentucky	6,000	6,000	100
Michigan	11,000	12,000	109
Minnesota	14,000	13,000	93
Missouri	12,000	12,000	100
Nebraska	3,500	4,000	114
New England ¹	17,000	19,000	112
New York	13,000	12,000	92
North Carolina	7,000	6,000	86
Ohio	12,000	12,000	100
Oklahoma	7,000	8,000	114
Oregon	14,000	13,000	93
Pennsylvania	15,000	15,000	100
South Carolina	3,500	3,000	86
Tennessee	7,500	7,000	93
Texas	29,000	27,000	93
Virginia	5,500	5,000	91
Washington	7,000	8,000	114
Wisconsin	67,000	72,000	107
Other States ²	31,000	33,000	106
United States	420,000	430,000	102

¹ New England includes Connecticut, Maine, Massachusetts, New Hampshire, Rhode Island, and Vermont.

² Includes data for States not published in this table.

Meat and Other Goats and Kids Inventory – States and United States: January 1, 2018 and 2019

State	2018	2019	2019 as percent of 2018
	(head)	(head)	(percent)
Alabama	47,000	45,000	96
Arizona	30,000	33,000	110
Arkansas	31,000	32,000	103
California	85,000	90,000	106
Colorado	23,000	24,000	104
Florida	45,000	50,000	111
Georgia	60,000	59,000	98
Illinois	25,000	23,000	92
Indiana	36,000	34,000	94
Iowa	40,000	37,000	93
Kansas	41,000	44,000	107
Kentucky	57,000	52,000	91
Louisiana	15,000	15,000	100
Minnesota	24,000	25,000	104
Mississippi	20,000	21,000	105
Missouri	70,000	72,000	103
New York	16,000	17,000	106
North Carolina	47,000	49,000	104
Ohio	44,000	45,000	102
Oklahoma	82,000	80,000	98
Oregon	29,000	27,000	93
Pennsylvania	38,000	38,000	100
South Carolina	34,000	32,000	94
Tennessee	96,000	89,000	93
Texas	765,000	740,000	97
Virginia	41,000	42,000	102
Washington	19,000	21,000	111
West Virginia	21,000	19,000	90
Other States ¹	194,000	200,000	103
United States	2,075,000	2,055,000	99

¹ Includes data for States not published in this table.

Statistical Methodology

Survey Procedures: A random sample of United States producers was surveyed to provide data for these estimates. Survey procedures ensured that all sheep and goat producers, regardless of size, had a chance to be included in the survey. Large producers were sampled more heavily than small operations. About 22,400 operators were contacted during the first half of January by mail, telephone and face-to-face personal interview and 67 percent of the reports were usable. Regardless of when operators responded, they were asked to report inventories as of January 1.

Estimating Procedures: These sheep and goat estimates were prepared by the Agricultural Statistics Board. National and State survey data were reviewed for reasonableness and with estimates from past years. A projected balance sheet for calendar year 2018 was also used. The balance sheet begins with the previous inventory estimate, adds estimates of births and imports, and subtracts estimates of slaughter, exports and deaths. This indicated ending inventory level is compared with the Agricultural Statistics Board estimate for reasonableness.

Revision Policy: Revisions to previous estimates are made to improve the current estimate. Previous year estimates are subject to revision when current estimates are made. Estimates will also be reviewed after data from the Department of Agriculture's five-year Census of Agriculture are available. No revisions will be made after that date.

Reliability: Since all operations raising sheep and goats are not included in the sample, survey estimates are subject to sampling variability. Survey results are also subject to non-sampling errors, such as omissions, duplications, and mistakes in reporting, recording, and processing the data. The effects of these errors cannot be measured directly. They are minimized through rigid quality controls in the data collection process and through a careful review of all reported data for consistency and reasonableness.

To assist users in evaluating reliability of the estimates in this report, the "**Root Mean Square Error**" is shown for selected sheep items in the following table. The "Root Mean Square Error" is a statistical measure based on past performance and is computed using the differences between the first and latest estimates.

The "Root Mean Square Error" for sheep and lamb inventory estimates over the past 10 years is 0.6 percent. This means that chances are 2 out of 3 that the final estimate will not be above or below the current estimate of 5.23 million head by more than 0.6 percent. Chances are 9 out of 10 that the difference will not exceed 1 percent.

The "Root Mean Square Error" for sheep shorn over the past 10 years is 1.2 percent. This means that chances are 2 out of 3 that the final estimate will not be above or below the current estimate of 3.37 million head by more than 1.2 percent. Chances are 9 out of 10 that the difference will not exceed 2.2 percent.

Also shown in the table is a 10-year record showing the range between the first inventory estimate and the latest estimate. Using estimates for All Sheep and Lambs as an example, changes between the first inventory estimate and the latest estimate during the past 10 years have averaged 23,000 head, ranging from 0 to 60,000 head. The initial inventory estimate of All Sheep and Lambs has been below the latest estimate 5 times and above the latest estimate 3 times in the last 10 years.

For Sheep and Lambs Shorn, changes between the first inventory estimate and the latest estimate during the past 10 years have averaged 21,000 head, ranging from 0 to 140,000 head. The initial inventory estimate of Sheep and Lambs Shorn has been below the latest estimate 1 times and above 5 times in the last 10 years.

Reliability of January 1 Sheep and Lambs Estimates

[Based on data for the past ten years]

Item	Root mean square error	90 percent confidence level	Difference between first and latest estimate				
			Average	Smallest	Largest	Years	
						Below latest	Above latest
	(percent)	(percent)	(1,000 head)	(1,000 head)	(1,000 head)	(number)	(number)
All sheep and lambs	0.6	1.0	23	0	60	5	3
Breeding sheep	0.5	1.0	17	0	45	5	3
Lamb crop	1.7	3.0	27	0	165	2	4
Sheep shorn	1.2	2.2	21	0	140	1	5
	(percent)	(percent)	(1,000 pounds)	(1,000 pounds)	(1,000 pounds)	(number)	(number)
Wool production	1.1	2.0	160	0	870	2	6

Information Contacts

Listed below are the commodity specialists in the Livestock Branch of the National Agricultural Statistics Service to contact for additional information. E-mail inquiries may be sent to nass@nass.usda.gov.

Travis Averill, Chief, Livestock Branch	(202) 720-3570
Scott Hollis, Head, Livestock Section	(202) 690-2424
Sherry Bertramsen – Livestock Slaughter	(202) 690-8632
Holly Brenize – Sheep and Goats	(202) 720-0585
Donnie Fike – Dairy Products	(202) 720-4448
Heidi Gleich – Cattle, Cattle on Feed	(202) 720-3040
Mike Miller – Milk Production and Milk Cows	(202) 720-3278
Seth Riggins – Hogs and Pigs	(202) 720-3106

Access to NASS Reports

For your convenience, you may access NASS reports and products the following ways:

- All reports are available electronically, at no cost, on the NASS web site: www.nass.usda.gov
- Both national and state specific reports are available via a free e-mail subscription. To set-up this free subscription, visit www.nass.usda.gov and click on “National” or “State” in upper right corner above “search” box to create an account and select the reports you would like to receive.
- Cornell’s Mann Library has launched a new website housing NASS’s and other agency’s archived reports. The new website, <https://usda.library.cornell.edu>. All email subscriptions containing reports will be sent from the new website, <https://usda.library.cornell.edu>. To continue receiving the reports via e-mail, you will have to go to the new website, create a new account and re-subscribe to the reports. If you need instructions to set up an account or subscribe, they are located at: <https://usda.library.cornell.edu/help>. You should whitelist notifications@usda-esmis.library.cornell.edu in your email client to avoid the emails going into spam/junk folders.

For more information on NASS surveys and reports, call the NASS Agricultural Statistics Hotline at (800) 727-9540, 7:30 a.m. to 4:00 p.m. ET, or e-mail: nass@nass.usda.gov.

The U.S. Department of Agriculture (USDA) prohibits discrimination against its customers, employees, and applicants for employment on the basis of race, color, national origin, age, disability, sex, gender identity, religion, reprisal, and where applicable, political beliefs, marital status, familial or parental status, sexual orientation, or all or part of an individual's income is derived from any public assistance program, or protected genetic information in employment or in any program or activity conducted or funded by the Department. (Not all prohibited bases will apply to all programs and/or employment activities.)

If you wish to file a Civil Rights program complaint of discrimination, complete the [USDA Program Discrimination Complaint Form](#) (PDF), found online at www.ascr.usda.gov/filing-program-discrimination-complaint-usda-customer, or at any USDA office, or call (866) 632-9992 to request the form. You may also write a letter containing all of the information requested in the form. Send your completed complaint form or letter to us by mail at U.S. Department of Agriculture, Director, Office of Adjudication, 1400 Independence Avenue, S.W., Washington, D.C. 20250-9410, by fax (202) 690-7442 or email at program.intake@usda.gov.



USDA NASS Data Users' Meeting
Tuesday, April 23, 2019

University of Chicago – Gleacher Center
450 North Cityfront Plaza Drive
Chicago, IL 60611
312-464-8787

USDA's National Agricultural Statistics Service will hold an open forum for users of U.S. domestic and international agriculture data. NASS is organizing the 2019 Data Users' Meeting in cooperation with five other USDA agencies – Agricultural Marketing Service, Economic Research Service, Farm Service Agency, Foreign Agricultural Service, and World Agricultural Outlook Board – and the Census Bureau's Foreign Trade Division. Agency representatives will provide updates on recent and pending changes in statistical and information programs important to agriculture, answer questions, and welcome comments and input from data users.

For registration details or additional information about the Data Users' Meeting, see the meeting page on the NASS website (https://www.nass.usda.gov/Education_and_Outreach/Meeting/index.php). Contact Vernita Murray (NASS) at 202-690-8141 or vernita.murray@nass.usda.gov or Patricia Snipe (NASS) at 202-720-2248 or patricia.snipe@nass.usda.gov for information.

The Data Users' Meeting precedes the Industry Outlook Conference at the same location on Wednesday, April 24, 2019. The outlook meeting brings together analysts from various commodity sectors to discuss developments and trends. For registration details or additional information about the Industry Outlook Conference, see the conference page on the LMIC website (<http://lmic.info/page/meetings>). Or contact Laura Lahr at 303-716-9935 or laura.lahr@lmic.info.