

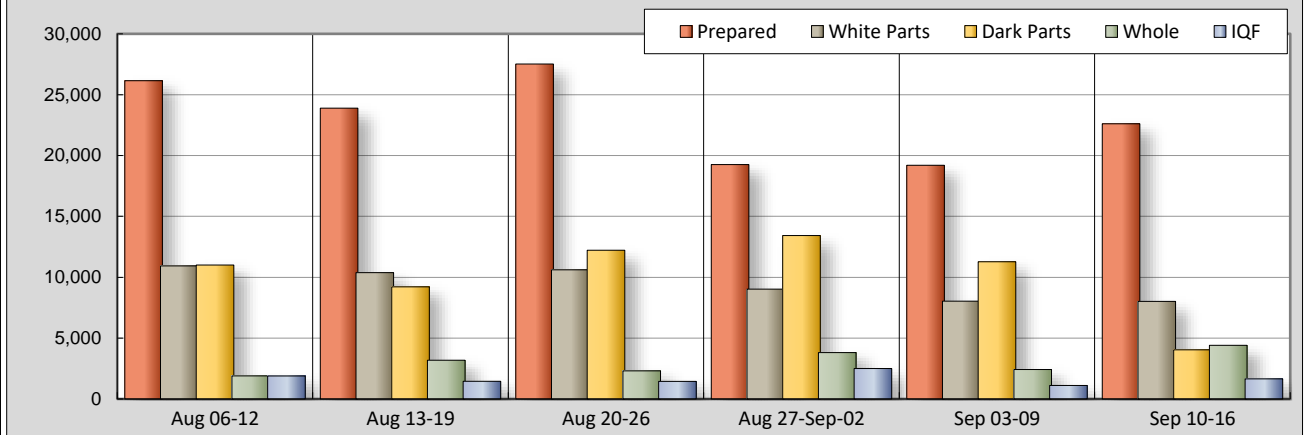


NATIONAL SUMMARY						
	THIS WEEK		LAST WEEK		LAST YEAR	
Feature Rate ^{1/}	73.1% of 29,200 outlets		75.9% of 29,200 outlets		82.8% of 29,200 outlets	
Special Rate ^{4/}	10.2%		16.3%		11.5%	
Activity Index ^{2/}	40,740		42,044		47,620	
WHOLE BIRD:	Stores ^{3/}	Wtd Avg	Stores /3	Wtd Avg	Stores /3	Wtd Avg
bagged fryer	3,153	1.42	502	1.39	1,408	1.11
cut-up fryer	265	1.54	10	1.99	12	0.89
bagged roaster	428	1.50	1,537	1.54	324	1.09
Cornish (frs/frz)	563	3.03	371	2.81	13	1.69
PARTS:						
Bnls/Sknls Breast						
regular pack	2,786	2.97	703	2.98	237	2.83
value pack	3,636	2.30	3,461	2.39	5,706	2.01
thin sliced	266	3.71	234	4.89	347	3.70
marinated	458	3.66	374	4.58	469	3.78
Breast Tenders						
regular pack	300	3.99	290	3.99	235	3.34
value pack	177	3.65	174	4.15	431	2.91
Split, bn-in Breast						
regular pack	158	1.58	712	1.03	212	1.65
value pack	106	1.43	1,979	1.10	3,440	1.35
Whole Wings	132	3.95	110	2.79	731	2.67
Leg Quarters						
tray pack	344	1.27	698	0.99	736	0.77
bagged	767	0.69	2,269	0.59	1,604	0.53
Legs			56	0.88	80	0.86
Thighs						
regular pack	388	2.49	795	1.00	94	0.78
value pack	586	1.27	2,580	1.29	2,875	1.14
Drumsticks						
regular pack	202	0.89	1,583	1.24	164	0.83
value pack	1,077	1.08	2,481	1.12	3,567	1.10
Bnls/Sknls Thighs						
regular pack	229	1.98	483	2.90	876	2.55
value pack	446	2.63	330	2.65	875	2.14
9-pc Combos						
drum-thigh-breast						
drum-thigh-wing	11	0.79				
IQF						
B/S Breast	1,143	2.54	555	2.70	556	2.01
Tenders	119	2.80	391	3.74	11	2.48
Wings	251	4.40	33	2.47	344	1.86
Party Wings	139	3.05	131	2.75	202	2.65

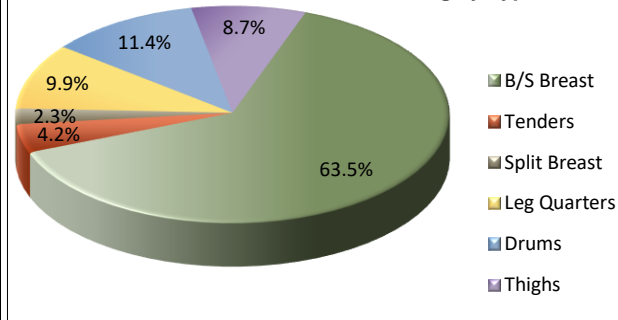
This Week's Chicken Feature Highlights

Just as summer is winding down, National summary figures are slightly lower during this week's ad cycle. Whole birds have Improved their visibility, with cut up fryers and bagged roasters offering the better price for shoppers. White parts manage to maintain their presence in ads, with split breast and wings asking for more money. Dark meat items take the back seat, but most items are readily available. IQF increases promotional activity with B/S breast leading the way. The deli has a nice variety of hot items for shoppers looking for convenience. Featuring of organic items rise this week, while specialty items lag behind.

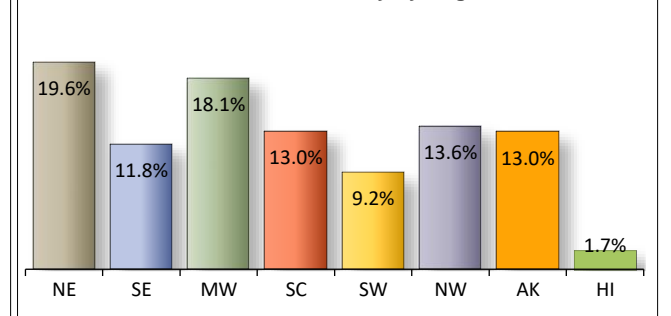
Chicken Promotional Activity by Category



Fresh Chicken Parts Featuring by Type



Relative Feature Activity by Region



All report information gathered from publicly available sources including store circulars, newspaper ads, and retailer websites.

^{1/} Feature Rate: the amount of sampled stores advertising any reported chicken item during the current week, expressed as a percentage of the total sample. ^{2/} Activity Index: a measure of the absolute frequency of feature activity equal to the total number of stores for each advertised chicken item (e.g., a retailer with 100 outlets featuring 3 chicken items has an activity index of 300). ^{3/} Stores/Avg: the total number of advertising outlets and the weighted average price weighted by the respective number of outlets. ^{4/} Special Rate: the percentage of sampled stores with a no-price promotion (e.g., buy 1, get 1 free, etc.)



USDA National Retail Report - Chicken
Advertised Prices for Chicken to Consumers at Major Retail Supermarket Outlets during the period of 09/10 thru 09/16.
 (prices in dollars per pound, fresh tray-pack product unless otherwise noted)

Fri. Sep 10, 2021

	NORTHEAST U.S. (CT,DE,MA,MD,ME,NH,NJ,NY,PA,RI,VT)				SOUTHEAST U.S. (AL,FL,GA,MS,NC,SC,TN,VA,WV)				MIDWEST U.S. (IA,IL,IN,KY,MI,MN,ND,NE,OH,SD,WI)			
Feature Rate ^{1/}	76.3% of 5,500 sampled outlets				67.9% of 7,400 sampled outlets				73.7% of 6,100 sampled outlets			
Special Rate ^{4/}	2.7% of stores w/ no-price promotions				13.9% of stores w/ no-price promotions				19.1% of stores w/ no-price promotions			
Activity Index ^{2/}	Activity Index = 6,499				Activity Index = 1,882				Activity Index = 4,617			
WHOLE BIRD:	Price Range	Stores	Wtd Avg		Price Range	Stores	Wtd Avg		Price Range	Stores	Wtd Avg	
			^{4/}				^{4/}				^{4/}	
bagged fryer	0.99 - 1.49	2,136	1.48		0.98 - 1.29	357	1.26		0.99 - 1.69	326	1.19	
cut-up fryers	1.49 - 1.99	223	1.53		1.49 - 1.78	20	1.64		1.49	10	1.49	
bagged roaster	1.29 - 1.59	424	1.51		1.49	4	1.49					
Cornish (frs/frz)									3.49	43	3.49	
PARTS:	Processor Brand	Store Brand	Stores	Wtd Avg	Processor Brand	Store Brand	Stores	Wtd Avg	Processor Brand	Store Brand	Stores	Wtd Avg
Bnls/Sknls Breast												
regular pack	2.89 - 2.99	2.99 - 3.99	617	3.27	2.89 - 2.99	2.98	397	2.90	2.89	2.99 - 3.99	870	3.16
value pack	2.00	1.79 - 2.99	1,131	2.45	2.39 - 2.89	1.79 - 4.99	463	2.17	2.99	1.79 - 4.99	996	2.08
thin sliced		2.49	62	2.49						3.99	43	3.99
marinated										2.50 - 3.99	438	3.69
Breast Tenders												
regular pack		3.99	288	3.99						3.99	12	3.99
value pack		2.99 - 3.99	133	3.53						3.99	44	3.99
Split, bn-in Breast												
regular pack												
value pack						1.29	6	1.29		0.79 - 0.89	22	0.84
Whole Wings		3.99	62	3.99		4.28	10	4.28		3.99	44	3.99
Leg Quarters												
tray pack		0.79	62	0.79		1.29	10	1.29		0.89 - 1.69	196	1.56
bagged		0.69 - 0.89	225	0.79		0.58 - 0.69	89	0.64		0.69 - 0.99	146	0.78
Legs												
Thighs												
regular pack						0.79 - 2.99	69	1.75		0.99	36	0.99
value pack	1.49	1.49	127	1.49		0.99 - 1.49	15	1.12		0.99 - 1.69	297	1.30
Drumsticks												
regular pack						0.75	26	0.75		0.89 - 0.99	48	0.97
value pack	1.49	0.79 - 0.99	241	1.14		0.94 - 0.99	45	0.95		0.88 - 1.69	389	1.18
Bnls/Sknls Thighs												
regular pack					2.49		12	2.49	2.49		33	2.49
value pack		2.49 - 2.99	235	2.75						2.99	44	2.99
9-pc Combos												
drum-thigh-breast												
drum-thigh-wing												
IQF	B/S Breast	2.33	209	2.33	1.99 - 3.99		277	3.43	1.59 - 2.80	1.59 - 2.16	555	2.11
	Tenders		65	2.80		2.80	5	2.80		2.80	25	2.80
	Wings		197	4.23								
	Party Wings		62	2.74	3.30		77	3.30				



USDA National Retail Report - Chicken

Advertised Prices for Chicken to Consumers at Major Retail Supermarket Outlets during the period of 09/10 thru 09/16.

(prices in dollars per pound, fresh tray-pack product unless otherwise noted)

Fri. Sep 10, 2021

	SOUTH CENTRAL U.S. (AR,CO,KS,LA,MO,NM,OK,TX)				SOUTHWEST U.S. (AZ,CA,NV,UT)				NORTHWEST U.S. (ID,MT,OR,WA,WY)			
Feature Rate ^{1/} Special Rate ^{4/} Activity Index ^{2/}	76.5% of 4,900 sampled outlets 2.7% of stores w/ no-price promotions Activity Index = 2,711				88.0% of 3,800 sampled outlets 10.6% of stores w/ no-price promotions Activity Index = 2,222				33.2% of 1,300 sampled outlets 7.3% of stores w/ no-price promotions Activity Index = 150			
WHOLE BIRD:	Price Range		Stores	Wtd Avg 4/	Price Range		Stores	Wtd Avg 4/	Price Range		Stores	Wtd Avg 4/
bagged fryer	0.99 - 1.69		238	1.52	0.88 - 1.29		67	0.92	1.29 - 1.99		25	1.60
cut-up fryer	1.68		12	1.68								
bagged roaster												
Cornish (frs/frz)	2.99		510	2.99	2.99		10	2.99				
PARTS:	Processor Brand	Store Brand	Stores	Wtd Avg	Processor Brand	Store Brand	Stores	Wtd Avg	Processor Brand	Store Brand	Stores	Wtd Avg
Bnls/Sknls Breast												
regular pack	2.89		224	2.89	2.49 - 2.89		678	2.51				
value pack	2.00 - 3.49	1.79 - 3.69	610	2.55	3.49	1.47 - 3.99	381	2.16		2.29 - 2.99	55	2.49
thin sliced		3.28 - 4.99	47	4.41	3.99	3.99	114	3.99				
marinated		2.50 - 2.98	20	2.88								
Breast Tenders												
regular pack												
value pack												
Split, bn-in Breast												
regular pack	2.19	1.19 - 1.58	144	1.56		1.79	14	1.79				
value pack	1.79	0.79	18	1.68	1.59		60	1.59				
Whole Wings	3.49		16	3.49								
Leg Quarters												
tray pack		0.98	16	0.98	0.89		60	0.89				
bagged		0.29 - 1.49	270	0.61								
Legs												
Thighs												
regular pack		0.99 - 2.99	141	2.74		2.99	142	2.99				
value pack		0.89	20	0.89		0.99	109	0.99		1.49	16	1.49
Drumsticks												
regular pack		0.99	12	0.99		0.69 - 0.89	101	0.85		0.99	15	0.99
value pack		0.48 - 0.99	163	0.83	1.29	0.79 - 0.99	237	1.05				
Bnls/Sknls Thighs												
regular pack	2.49	3.29	47	2.68		1.47	129	1.47	2.49		4	2.49
value pack	2.99		16	2.99		1.97 - 2.99	120	2.06		2.99 - 3.48	31	3.23
9-pc Combos												
drum-thigh-breast												
drum-thigh-wing		0.79	11	0.79								
IDF												
B/S Breast	1.99	2.99	98	2.87						2.16	4	2.16
Tenders		2.80	24	2.80								
Wings		4.99	54	4.99								
Party Wings												



USDA National Retail Report - Chicken
Advertised Prices for Chicken to Consumers at Major Retail Supermarket Outlets during the period of 09/10 thru 09/16.
 (prices in dollars per pound, fresh tray-pack product unless otherwise noted)

Fri. Sep 10, 2021

		ALASKA (AK)				HAWAII (HI)					
Feature Rate ^{1/}		56.0% of 100 sampled outlets				46.7% of 100 sampled outlets					
Special Rate ^{4/}		11.0% of stores w/ no-price promotions				0.0% of stores w/ no-price promotions					
Activity Index ^{2/}		Activity Index = 49				Activity Index = 0					
WHOLE BIRD:		Price Range		Stores	Wtd Avg	Price Range		Stores	Wtd Avg		
				4/				4/			
bagged fryer		2.18		4	2.18						
cut-up fryer											
bagged roaster											
Cornish (frs/frz)											
PARTS:		Processor Brand	Store Brand	Stores	Wtd Avg	Processor Brand	Store Brand	Stores	Wtd Avg		
Bnls/Sknls Breast											
regular pack											
value pack											
thin sliced											
marinated											
Breast Tenders											
regular pack											
value pack											
Split, bn-in Breast											
regular pack											
value pack											
Whole Wings											
Leg Quarters											
tray pack											
bagged			0.39	37	0.39						
Legs											
Thighs											
regular pack											
value pack			1.79	2	1.79						
Drumsticks											
regular pack											
value pack			1.79	2	1.79						
Bnls/Sknls Thighs											
regular pack			3.98	4	3.98						
value pack											
9-pc Combos											
drum-thigh-breast											
drum-thigh-wing											
ID#	B/S Breast										
	Tenders										
	Wings										
	Party Wings										

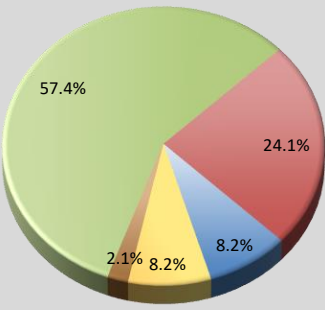


USDA National Retail Report - Chicken
Advertised Prices for Chicken to Consumers at Major Retail Supermarket Outlets during the period of 09/10 thru 09/16.
 (prices in dollars per unit or per pound unless otherwise noted)

Fri. Sep 10, 2021

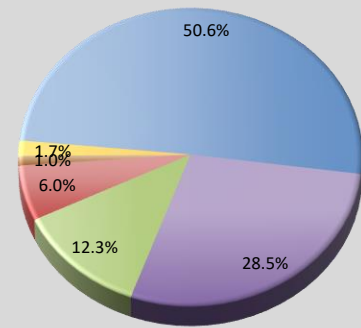
PREPARED FOODS NATIONAL SUMMARY																								
THIS WEEK			LAST WEEK			LAST YEAR			NORTHEAST U.S.			SOUTHEAST U.S.			MIDWEST U.S.			SOUTH CENTRAL U.S.						
Feature Rate ^{1/}	46.4% of 29,200 outlets			46.5% of 29,200 outlets			51.7% of 29,200 outlets			Feature Rate ^{1/}	25.5% of 5,500 sampled outlets			65.5% of 7,400 sampled outlets			55.1% of 6,100 sampled outlets			43.3% of 4,900 sampled				
Activity Index ^{2/}	22,610			19,202			22,071			Activity Index ^{2/}	Activity Index = 2,092			Activity Index = 7,364			Activity Index = 5,292			Activity Index = 4,37				
	Stores	Wtd Avg	Stores	Wtd Avg	Stores	Wtd Avg	Stores	Wtd Avg	price range	stores	wtd avg	price range	stores	wtd avg	price range	stores	wtd avg	price range	stores					
ROTISSERIE:																								
Whole Bird																								
< 2 lbs.	11,877	4.74	6,680	4.82	9,719	5.55			4.50 - 6.99	1,286	4.76	4.50 - 6.99	3,573	4.73	4.50 - 6.99	2,422	4.81	4.50 - 6.47	3,079					
2.1-3.0 lbs.	1,106	5.38	930	5.08	339	6.62			5.00 - 5.99	50	5.73	5.99	2	5.99	5.00 - 6.99	900	5.26	5.99	4					
Whole Breast																								
Leg Quarter			12	5.99	107	1.49																		
FRIED & BAKED:																								
Fried 8-Piece Mix																								
	5,196	6.23	6,755	6.57	1,857	7.22			6.49	82	6.49	5.00 - 8.49	2,564	7.10	5.00 - 10.99	1,060	5.45	5.00 - 9.99	573					
Baked 8-Piece Mix																								
	1,858	5.30	1,961	6.49	931	7.37			4.99 - 5.00	482	5.00	4.99 - 5.00	482	5.00	6.98 - 9.00	66	7.32	5.00 - 9.00	539					
F/B 8-Piece Dark																								
			465	5.43	730	4.92																		
F/B 12-Piece																								
	199	12.04	388	11.98	811	12.06			11.99	135	11.99				13.00	10	13.00	11.99	54					
Bulk Pack (\$/piece)																								
	53	0.80	13	1.06	74	0.82									0.80	53	0.80							
Wings: bone-in																								
	710	6.70	618	7.96	2,092	5.68			8.99	165	8.99	4.98 - 6.99	388	5.93	6.99	88	6.99	4.99	58					
Wings: boneless																								
	1,143	5.79	279	7.70	955	5.76			5.99	209	5.99	4.98 - 5.99	278	5.71	3.99 - 6.99	598	5.84	4.99	58					
Tenders																								
	468	6.73	936	8.03	4,456	6.35			5.99 - 8.99	165	7.86	4.98 - 9.99	77	5.63	4.99 - 9.99	95	7.28	3.99	10					
Strips																								
			119	5.00																				
Popcorn																								
			46	7.99																				
														SOUTHWEST U.S.			NORTHWEST U.S.			ALASKA			HAWAII	
Feature Rate ^{1/}										Feature Rate ^{1/}	20.5% of 3,800 sampled outlets			78.8% of 1,300 sampled outlets			21.0% of 100 sampled outlets			9.5% of 100 sampled o				
Activity Index ^{2/}										Activity Index ^{2/}	Activity Index = 1,340			Activity Index = 2,074			Activity Index = 53			Activity Index = 20				
	Stores	Wtd Avg	Stores	Wtd Avg	Stores	Wtd Avg	Stores	Wtd Avg	price range	stores	wtd avg	price range	stores	wtd avg	price range	stores	wtd avg	price range	stores					
ROTISSERIE:																								
Whole Bird																								
< 2 lbs.									4.50 - 6.99	993	4.64	4.50 - 7.99	473	5.08	4.50 - 5.50	31	4.85	4.50	20					
2.1-3.0 lbs.									5.97	129	5.97	6.00	21	6.00										
Whole Breast																								
Leg Quarter																								
FRIED & BAKED:																								
Fried 8-Piece Mix																								
									5.97	129	5.97	5.00 - 5.50	777	5.06	5.50	11	5.50							
Baked 8-Piece Mix																								
									8.99	89	8.99	5.00	682	5.00										
F/B 8-Piece Dark																								
F/B 12-Piece																								
Bulk Pack (\$/piece)																								
Wings: bone-in																								
												6.49	11	6.49										
Wings: boneless																								
												5.50 - 6.98	110	5.70	5.50	11	5.50							
Tenders																								
Strips																								
Popcorn																								

Prepared Chicken Featuring by Category



Rotisserie 57.4%
 Fried 24.1%
 Baked 8.2%
 Wings 8.2%
 Other* 2.1%
 * Other = tenders, strips, and popcorn

Whole Bird Featuring Fresh versus Prepared



Fresh Whole 50.6%
 Specialty Fresh 28.5%
 Fresh Cutup 12.3%
 Roaster 6.0%
 Rotisserie 1.7%
 Other 1.0%

I.S.
outlets
75
wtd avg
4.66
5.99

5.35
5.10
11.99

4.99
4.99
3.99

outlets
1
wtd avg

4.50



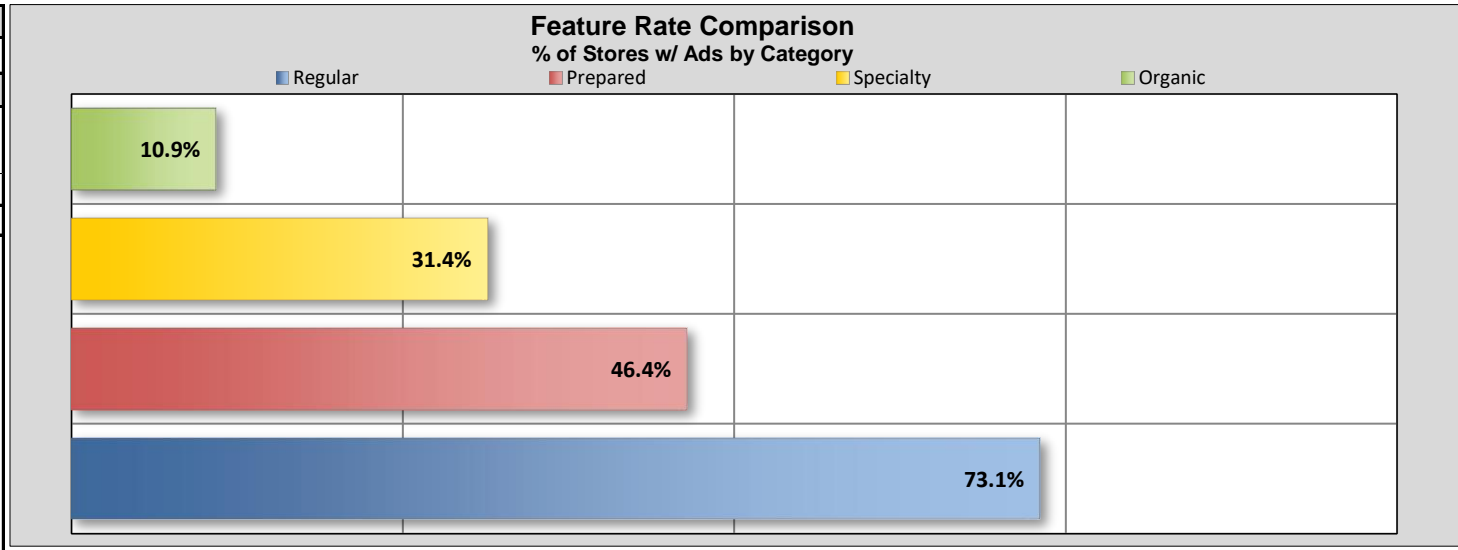
USDA National Retail Report - Chicken

Fri. Sep 10, 2021

Advertised Prices for Chicken to Consumers at Major Retail Supermarket Outlets during the period of 09/10 thru 09/16.

(prices in dollars per pound, fresh tray-pack product unless otherwise noted)

NATIONAL SUMMARY						
SPECIALTY CHICKEN						
	THIS WEEK		LAST WEEK		LAST YEAR	
Feature Rate ^{1/}	31.4% of 29,200 outlets		36.8% of 29,200 outlets		23.1% of 29,200 outlets	
Activity Index ^{2/}	9,358		11,576		14,963	
	Stores	Wtd Avg	Stores	Wtd Avg	Stores	Wtd Avg
Whole Fryer	1,534	1.65	1,073	1.72	1,162	1.99
Bnls/Sknls Breast	2,458	3.41	4,622	3.84	4,512	4.01
Breast Tenders	510	4.51	817	5.17	1,109	3.87
Split, bn-in Breast	792	2.47	439	1.76	1,059	1.73
Whole Wings	185	3.96	219	3.83	373	3.00
Leg Quarters	330	1.43	633	0.91	299	1.14
Legs			132	1.81		
Thighs	1,502	2.02	1,145	1.99	2,413	1.89
Drumsticks	1,195	1.46	971	1.36	2,282	1.90
B/S Thighs	852	3.33	1,525	3.51	1,754	3.79



SPECIALTY	NORTHEAST U.S.			SOUTHEAST U.S.			MIDWEST U.S.			SOUTH CENTRAL U.S.			SOUTHWEST U.S.			NORTHWEST U.S.		
Feature Rate ^{1/}	42.1% of 5,500 sampled outlets			26.2% of 7,400 sampled outlets			31.2% of 6,100 sampled outlets			37.2% of 4,900 sampled outlets			22.9% of 3,800 sampled outlets			20.9% of 1,300 sampled outlets		
Activity Index ^{2/}	Activity Index = 4,686			Activity Index = 1,564			Activity Index = 1,231			Activity Index = 952			Activity Index = 550			Activity Index = 285		
	price range	stores	wtd avg	price range	stores	wtd avg	price range	stores	wtd avg	price range	stores	wtd avg	price range	stores	wtd avg	price range	stores	wtd avg
Whole Fryer	0.99 - 2.79	957	1.89	0.99 - 1.99	214	1.41	0.99 - 2.99	69	1.31	2.49	24	2.49	0.99	270	0.99	2.99 - 5.99	33	4.14
Bnls/Sknls Breast	3.99 - 6.32	758	4.56	0.99 - 5.99	530	2.58	1.98 - 5.99	641	2.84	1.98 - 5.99	235	3.19	2.99 - 3.49	261	3.22	4.99 - 7.98	57	5.72
Breast Tenders	4.59	288	4.59	3.79	17	3.79	3.99	78	3.99	3.19 - 3.99	63	3.51	7.98	7	7.98	1.69 - 2.78	58	1.97
Split, bn-in Breast	1.79 - 2.99	349	2.11	1.99 - 2.99	49	2.09	2.99	25	2.99	2.99	311	2.99						
Whole Wings				3.49	131	3.49				3.99	24	3.99						
Leg Quarters	1.29 - 1.99	141	1.53	1.99	44	1.99	0.99 - 1.18	114	1.08	1.49	31	1.49						
Legs																		
Thighs	0.99 - 3.59	979	2.26	0.98 - 2.69	231	1.46	0.99 - 2.39	113	1.38	1.38 - 2.00	110	1.52				1.79	39	1.79
Drumsticks	0.99 - 1.89	628	1.47	0.98 - 1.79	187	1.17	0.99 - 2.39	113	1.38	1.38 - 2.00	127	1.52	1.99	12	1.99	0.99 - 2.29	98	1.52
B/S Thighs	2.99 - 3.99	586	3.62	2.48 - 2.59	161	2.57	2.99	78	2.99	2.69 - 2.99	27	2.72						

SPECIALTY	ALASKA			HAWAII		
Feature Rate ^{1/}	0.0% of 100 sampled outlets			0.0% of 100 sampled outlets		
Activity Index ^{2/}	Activity Index = 0			Activity Index = 90		
	price range	stores	wtd avg	price range	stores	wtd avg
Whole Fryer						
Bnls/Sknls Breast						
Breast Tenders						
Split, bn-in Breast						
Whole Wings				5.99	30	5.99
Leg Quarters						
Legs						
Thighs				2.69	30	2.69
Drumsticks				2.69	30	2.69
B/S Thighs						

Specialty products are produced from chickens raised on an all vegetable diet without antibiotics and are minimally processed. USDA Certified Organic are products grown and processed according to USDA's national organic standards and certified by USDA-accredited State and private certification organizations. For more information, visit <http://www.ams.usda.gov/nop/>.

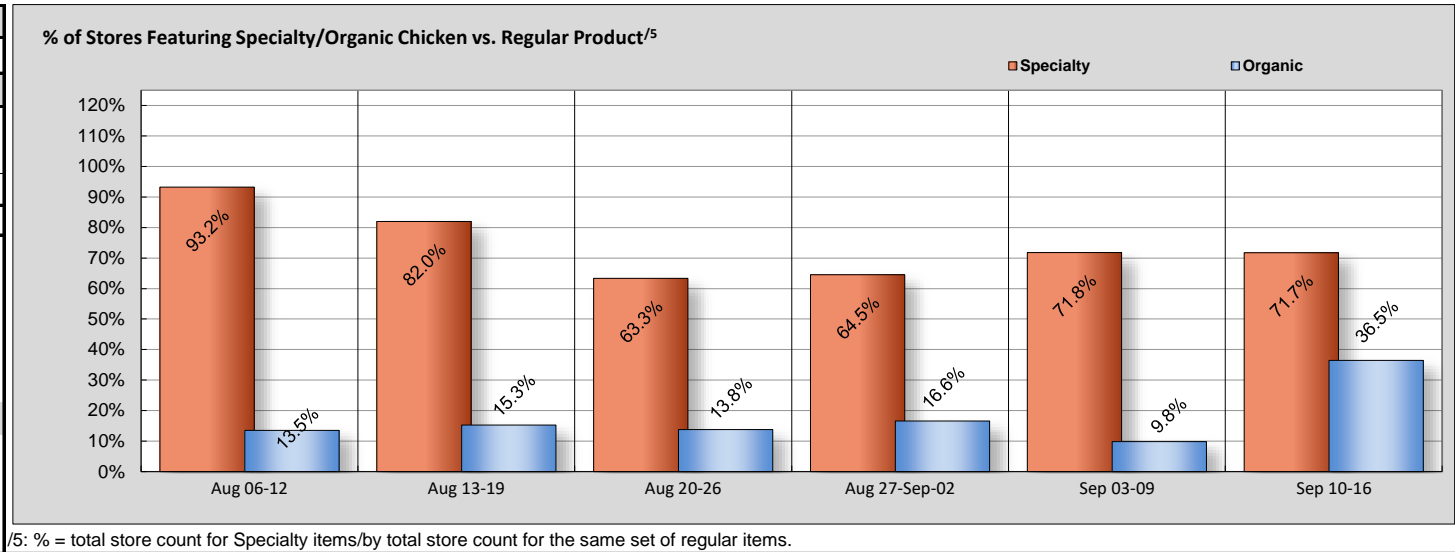


USDA National Retail Report - Chicken

Advertised Prices for Chicken to Consumers at Major Retail Supermarket Outlets during the period of 09/10 thru 09/16.

(prices in dollars per pound, fresh tray-pack product unless otherwise noted)

NATIONAL SUMMARY						
USDA ORGANIC CHICKEN						
	THIS WEEK		LAST WEEK		LAST YEAR	
Feature Rate ^{1/}	10.9% of 29,200 outlets		4.1% of 29,200 outlets		11.0% of 29,200 outlets	
Activity Index ^{2/}	4,720		1,531		4,686	
	Stores	Wtd Avg	Stores	Wtd Avg	Stores	Wtd Avg
Whole Fryer	1,256	3.58	636	4.53	458	3.14
Bnls/Sknls Breast	2,608	7.20	772	7.77	2,589	6.99
Breast Tenders	424	6.99			1,010	8.04
Split, bn-in Breast			11	6.99		
Whole Wings	24	4.49	25	4.99		
Leg Quarters	--	--	--	--	--	--
Legs						
Thighs	40	4.99	11	3.49		
Drumsticks	368	3.02	76	3.92	249	2.62
B/S Thighs					380	6.13



^{5/}: % = total store count for Specialty items/by total store count for the same set of regular items.

ORGANIC	NORTHEAST U.S.		SOUTHEAST U.S.		MIDWEST U.S.		SOUTH CENTRAL U.S.		SOUTHWEST U.S.		NORTHWEST U.S.	
	20.0% of 5,500 sampled outlets Activity Index = 1,938		20.6% of 7,400 sampled outlets Activity Index = 1,553		1.5% of 6,100 sampled outlets Activity Index = 519		2.6% of 4,900 sampled outlets Activity Index = 218		7.2% of 3,800 sampled outlets Activity Index = 432		3.5% of 1,300 sampled outlets Activity Index = 32	
Whole Fryer	2.59 - 8.99	787 3.88	2.99 - 3.99	132 3.32	2.99 89 2.99	2.99 70 2.99	2.99 146 2.99	2.99 32 2.99				
Bnls/Sknls Breast	5.99 - 8.99	817 7.10	6.99 - 7.99	1,163 7.02	6.99 215 6.99	7.99 124 7.99	7.99 261 7.99					
Breast Tenders	6.99	209 6.99			6.99 215 6.99							
Split, bn-in Breast												
Whole Wings						4.49 24 4.49						
Legs												
Thighs			4.99	40 4.99								
Drumsticks	2.99	125 2.99	2.99	218 2.99			3.49 25 3.49					
B/S Thighs												
ORGANIC	ALASKA		HAWAII									
	0.0% of 100 sampled outlets Activity Index = 28		31.4% of 100 sampled outlets Activity Index = 153									
Whole Fryer			2.99 - 5.99	33 5.72								
Bnls/Sknls Breast	7.99	28 7.99										
Breast Tenders				30								
Split, bn-in Breast												
Whole Wings												
Legs												
Thighs			5.49	30 5.49								
Drumsticks			4.29	30 4.29								
B/S Thighs			8.29	30 8.29								

Specialty products are produced from chickens raised on an all vegetable diet without antibiotics and are minimally processed. USDA Certified Organic are products grown and processed according to USDA's national organic standards and certified by USDA-accredited State and private certification organizations. For more information, visit <http://www.ams.usda.gov/nop/>.