



USDA National Retail Report - Chicken

Fri. Oct 22, 2021

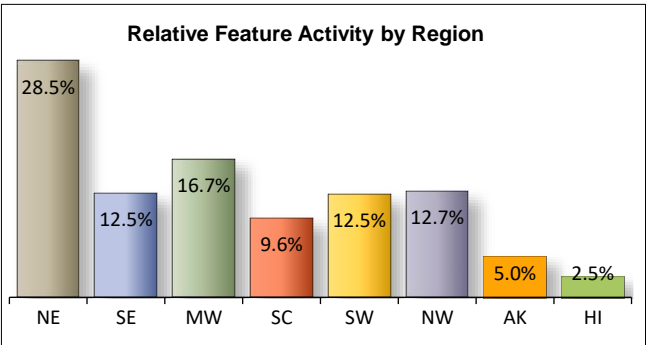
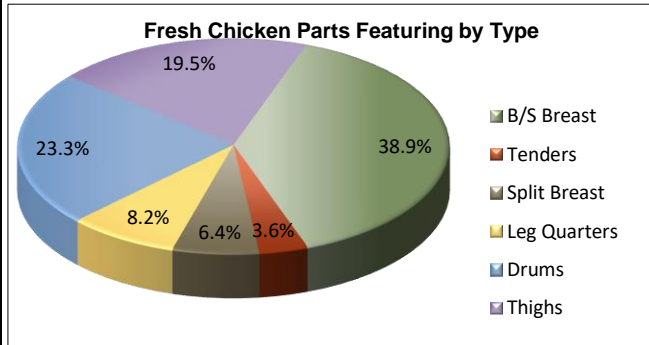
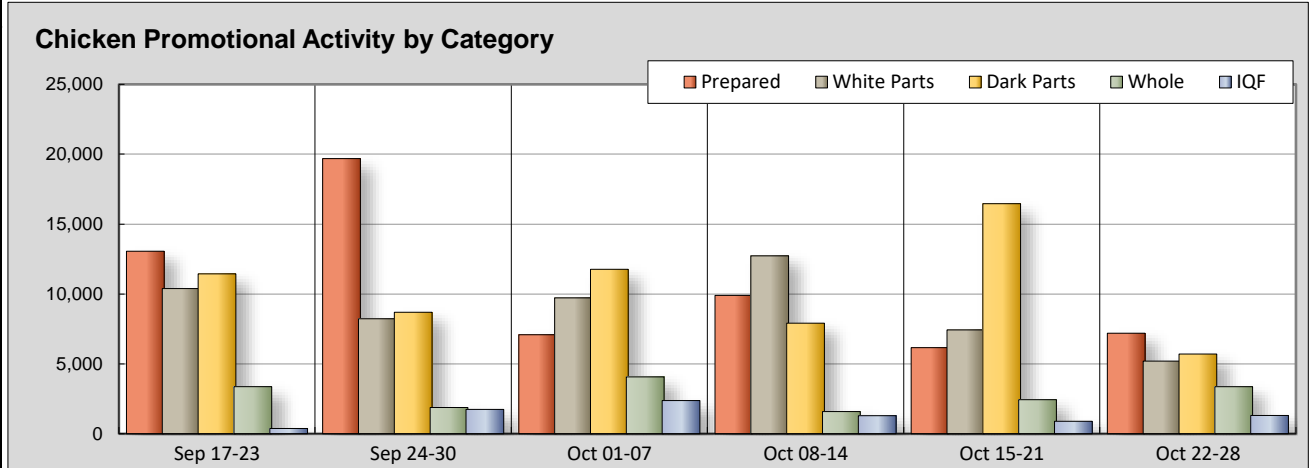
Advertised Prices for Chicken to Consumers at Major Retail Supermarket Outlets during the period of 10/22 thru 10/28.

(prices in dollars per pound, fresh tray-pack product unless otherwise noted)

NATIONAL SUMMARY						
	THIS WEEK		LAST WEEK		LAST YEAR	
Feature Rate ^{1/}	64.2% of 29,200 outlets		66.9% of 29,200 outlets		68.4% of 29,200 outlets	
Special Rate ^{4/}	2.1%		1.2%		9.9%	
Activity Index ^{2/}	22,786		33,383		37,771	
WHOLE BIRD:	Stores ^{3/} Wtd Avg		Stores /3 Wtd Avg		Stores /3 Wtd Avg	
bagged fryer	2,721	1.34	2,250	1.31	2,282	1.21
cut-up fryer	120	1.77	10	0.99	120	1.25
bagged roaster	452	1.40	62	1.35	229	1.20
Cornish (frs/frz)	75	2.90	116	2.95	178	3.37
PARTS:						
Bnls/Sknls Breast						
regular pack	950	2.07	2,237	2.41	1,211	2.36
value pack	2,464	2.86	2,477	2.66	4,682	1.90
thin sliced	366	4.12	279	3.25	101	2.98
marinated	137	4.63	288	3.25	134	3.81
Breast Tenders						
regular pack	43	3.69	1,235	3.11	685	3.46
value pack	324	3.31	64	3.99	1,156	2.56
Split, bn-in Breast						
regular pack	440	2.00	231	1.38	226	1.45
value pack	209	1.61	311	1.29	656	1.19
Whole Wings	266	3.22	308	2.89	392	2.70
Leg Quarters						
tray pack	327	0.83	490	1.01	414	0.78
bagged	502	0.64	2,499	0.60	554	0.58
Legs	246	1.00	330	0.98	60	0.79
Thighs						
regular pack	540	1.48	2,571	1.11	384	0.95
value pack	1,422	1.10	2,246	1.13	2,202	0.93
Drumsticks						
regular pack	71	0.94	2,204	1.00	567	0.90
value pack	2,275	1.03	3,339	1.03	2,932	0.90
Bnls/Sknls Thighs						
regular pack	107	2.99	184	3.12	626	2.37
value pack	215	2.41	2,598	2.02	2,528	1.89
9-pc Combos						
drum-thigh-breast						
drum-thigh-wing	11	0.79				
IQF						
B/S Breast	1,024	2.56	681	2.42	640	2.28
Tenders	147	3.06	88	2.82		
Wings	62	2.59	62	2.59	129	2.64
Party Wings	76	2.97	62	2.74	14	2.50

This Week's Chicken Feature Highlights

The retail chicken feature rate and activity index further decline, but special rates manages to slightly increase. Whole birds continue the momentum of regaining visibility; prices for most items are on the rise as well. White parts decrease features in ads, but are offering deals for regular B/S breast and value pack tenders. The dark meat section takes a sharp decline in ad presence with prices for regular pack B/S thighs and leg quarters also taking a tumble. IQF manage to grab a little more space in ads this week. The deli makes a slight comeback in ads; items are readily available for shoppers looking for convenience. Both specialty and organics decrease in offer this week.



All report information gathered from publicly available sources including store circulars, newspaper ads, and retailer websites.
^{1/} **Feature Rate:** the amount of sampled stores advertising any reported chicken item during the current week, expressed as a percentage of the total sample. ^{2/} **Activity Index:** a measure of the absolute frequency of feature activity equal to the total number of stores for each advertised chicken item (e.g., a retailer with 100 outlets featuring 3 chicken items has an activity index of 300). ^{3/} **Stores/Avg:** the total number of advertising outlets and the weighted average price weighted by the respective number of outlets.
Special Rate: the percentage of sampled stores with a no-price promotion (e.g., buy 1, get 1 free, etc.)



USDA National Retail Report - Chicken

Advertised Prices for Chicken to Consumers at Major Retail Supermarket Outlets during the period of 10/22 thru 10/28.

(prices in dollars per pound, fresh tray-pack product unless otherwise noted)

Fri. Oct 22, 2021

	NORTHEAST U.S. (CT,DE,MA,MD,ME,NH,NJ,NY,PA,RI,VT)				SOUTHEAST U.S. (AL,FL,GA,MS,NC,SC,TN,VA,WV)				MIDWEST U.S. (IA,IL,IN,KY,MI,MN,ND,NE,OH,SD,WI)			
Feature Rate ^{1/}	80.5% of 5,500 sampled outlets				58.4% of 7,400 sampled outlets				60.0% of 6,100 sampled outlets			
Special Rate ^{4/}	7.6% of stores w/ no-price promotions				0.2% of stores w/ no-price promotions				1.0% of stores w/ no-price promotions			
Activity Index ^{2/}	Activity Index = 5,478				Activity Index = 1,658				Activity Index = 3,494			
WHOLE BIRD:	Price Range		Stores	Wtd Avg	Price Range		Stores	Wtd Avg	Price Range		Stores	Wtd Avg
				4/				4/				4/
bagged fryer	0.99 - 1.79		879	1.29	0.99 - 1.79		255	1.41	1.29 - 1.89		686	1.48
cut-up fryers					1.88		10	1.88	1.49 - 1.98		110	1.76
bagged roaster	1.39 - 1.49		233	1.40	1.49		4	1.49	1.39		215	1.39
Cornish (frs/frz)	2.99		62	2.99								
PARTS:	Processor Brand	Store Brand	Stores	Wtd Avg	Processor Brand	Store Brand	Stores	Wtd Avg	Processor Brand	Store Brand	Stores	Wtd Avg
Bnls/Sknls Breast												
regular pack		1.99 - 2.99	269	2.22						2.49	36	2.49
value pack	1.99	1.99 - 2.99	955	2.63		2.19 - 4.99	201	2.77		1.49 - 4.99	242	2.66
thin sliced	3.99	3.99 - 4.88	236	4.26						3.99	15	3.99
marinated		4.99	110	4.99								
Breast Tenders												
regular pack										3.69	43	3.69
value pack		3.99	62	3.99		2.99	109	2.99	2.79	2.99 - 3.99	153	3.26
Split, bn-in Breast												
regular pack		1.99	209	1.99						1.99	215	1.99
value pack		1.68	90	1.68		1.38	30	1.38		1.29	23	1.29
Whole Wings		3.99	62	3.99						1.99 - 3.79	108	2.95
Leg Quarters												
tray pack	0.59	0.69 - 0.99	206	0.76	0.59	0.98	12	0.92				
bagged		0.69 - 0.88	114	0.84		0.49 - 0.69	48	0.53		0.59 - 0.99	130	0.76
Legs		0.99	210	0.99						0.69	12	0.69
Thighs												
regular pack					1.28 - 1.49		482	1.48				
value pack		0.99	478	0.99		0.99 - 1.09	159	0.99	0.99	0.59 - 1.69	505	1.17
Drumsticks												
regular pack												
value pack	0.99	0.99 - 1.49	770	1.06		0.99 - 1.09	159	0.99	0.99	0.59 - 1.99	515	1.12
Bnls/Sknls Thighs												
regular pack		2.99	107	2.99								
value pack		2.99	62	2.99						1.88	44	1.88
9-pc Combos												
drum-thigh-breast												
drum-thigh-wing												
B/S Breast	2.40	2.80	240	2.63	2.40		189	2.40	2.40 - 2.80	2.00 - 2.80	389	2.51
Tenders										2.80	39	2.80
Wings		2.59	62	2.59	3.99			3.99				
Party Wings		2.74	62	2.74					3.99		14	3.99

Source: USDA Livestock, Poultry, & Grain Market News;

<http://www.ams.usda.gov/market-news/livestock-poultry-grain>;

(404) 562-5850

Email: Atlanta.lpgmn@ams.usda.gov



USDA National Retail Report - Chicken

Fri. Oct 22, 2021

Advertised Prices for Chicken to Consumers at Major Retail Supermarket Outlets during the period of 10/22 thru 10/28.

(prices in dollars per pound, fresh tray-pack product unless otherwise noted)

	SOUTH CENTRAL U.S. (AR,CO,KS,LA,MO,NM,OK,TX)				SOUTHWEST U.S. (AZ,CA,NV,UT)				NORTHWEST U.S. (ID,MT,OR,WA,WY)			
Feature Rate ^{1/}	63.0% of 4,900 sampled outlets				54.8% of 3,800 sampled outlets				80.1% of 1,300 sampled outlets			
Special Rate ^{4/}	0.0% of stores w/ no-price promotions				0.3% of stores w/ no-price promotions				7.3% of stores w/ no-price promotions			
Activity Index ^{2/}	Activity Index = 2,119				Activity Index = 1,924				Activity Index = 902			
WHOLE BIRD:	Price Range		Stores	Wtd Avg	Price Range		Stores	Wtd Avg	Price Range		Stores	Wtd Avg
				^{4/}				^{4/}				^{4/}
bagged fryer	1.19 - 2.99		304	1.67	0.77 - 1.79		535	1.02	1.29 - 1.79		59	1.44
cut-up fryer												
bagged roaster					2.49		13	2.49				
Cornish (frs/frz)												
PARTS:	Processor Brand	Store Brand	Stores	Wtd Avg	Processor Brand	Store Brand	Stores	Wtd Avg	Processor Brand	Store Brand	Stores	Wtd Avg
Bnls/Sknls Breast												
regular pack						1.99	645	1.99				
value pack		1.79 - 2.99	161	2.81	3.69	2.29 - 2.99	182	2.80		2.99 - 3.48	723	3.28
thin sliced		2.98	16	2.98	3.99		60	3.99		3.99	39	3.99
marinated		2.99 - 3.28	27	3.16								
Breast Tenders												
regular pack												
value pack												
Split, bn-in Breast												
regular pack										2.29	16	2.29
value pack		1.49	12	1.49		1.79	54	1.79				
Whole Wings	3.39	2.49 - 3.99	96	3.02								
Leg Quarters												
tray pack	1.00	0.99	47	0.99	0.89		60	0.89				
bagged		0.39 - 0.69	210	0.49								
Legs												
Thighs					1.28		24	1.28				
regular pack	1.49 - 1.59		58	1.51								
value pack	1.00 - 1.59	0.97 - 1.29	208	1.21		1.19	54	1.19		1.49	16	1.49
Drumsticks												
regular pack						0.79 - 0.89	63	0.87				
value pack	0.59 - 1.49	0.47 - 1.29	688	0.90	0.97	1.19 - 1.69	125	1.13		1.69	16	1.69
Bnls/Sknls Thighs												
regular pack												
value pack						2.29	109	2.29				
9-pc Combos												
drum-thigh-breast												
drum-thigh-wing		0.79	11	0.79								
IGT	B/S Breast	2.40	2.71 - 2.80	195	2.65					3.48	11	3.48
	Tenders		3.07	86	3.07					3.48	22	3.48
	Wings											
	Party Wings											

Source: USDA Livestock, Poultry, & Grain Market News;

(404) 562-5850

3 of 7

<http://www.ams.usda.gov/market-news/livestock-poultry-grain;>

Email: Atlanta.lpgmn@ams.usda.gov



USDA National Retail Report - Chicken

Advertised Prices for Chicken to Consumers at Major Retail Supermarket Outlets during the period of 10/22 thru 10/28.

(prices in dollars per pound, fresh tray-pack product unless otherwise noted)

Fri. Oct 22, 2021

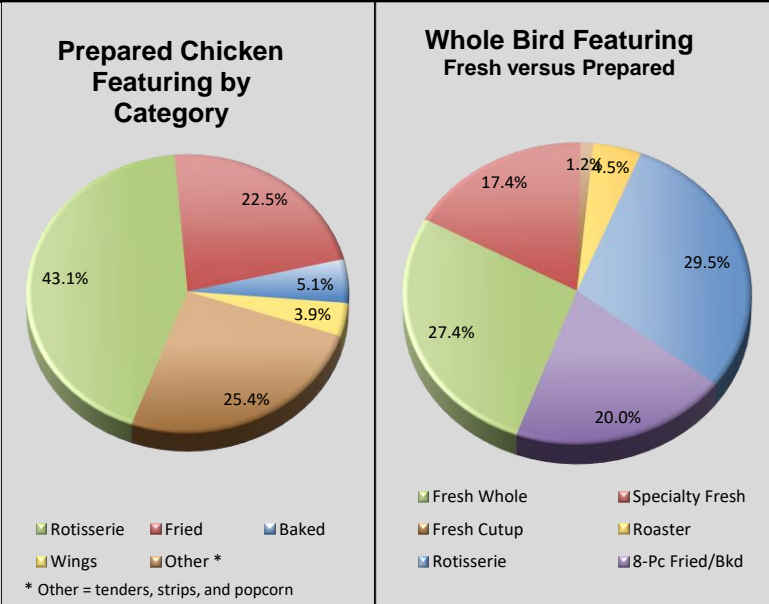
		ALASKA (AK)				HAWAII (HI)					
Feature Rate ^{1/}		75.0% of 100 sampled outlets				60.0% of 100 sampled outlets					
Special Rate ^{4/}		11.0% of stores w/ no-price promotions				0.0% of stores w/ no-price promotions					
Activity Index ^{2/}		Activity Index = 14				Activity Index = 3					
WHOLE BIRD:		Price Range	Stores	Wtd Avg	Price Range	Stores	Wtd Avg				
				4/			4/				
bagged fryer					1.79	3	1.79				
cut-up fryer											
bagged roaster											
Cornish (frs/frz)											
PARTS:		Processor Brand	Store Brand	Stores	Wtd Avg	Processor Brand	Store Brand	Stores	Wtd Avg		
Bnls/Sknls Breast											
regular pack											
value pack											
thin sliced											
marinated											
Breast Tenders											
regular pack											
value pack											
Split, bn-in Breast											
regular pack											
value pack											
Whole Wings											
Leg Quarters											
tray pack			1.69	2	1.69						
bagged											
Legs											
Thighs											
regular pack											
value pack			1.79	2	1.79						
Drumsticks											
regular pack			1.48	8	1.48						
value pack			1.79	2	1.79						
Bnls/Sknls Thighs											
regular pack											
value pack											
9-pc Combos											
drum-thigh-breast											
drum-thigh-wing											
IDE	B/S Breast										
	Tenders										
	Wings										
	Party Wings										



USDA National Retail Report - Chicken
Advertised Prices for Chicken to Consumers at Major Retail Supermarket Outlets during the period of 10/22 thru 10/28.
 (prices in dollars per unit or per pound unless otherwise noted)

Fri. Oct 22, 2021

PREPARED FOODS NATIONAL SUMMARY																							
		THIS WEEK		LAST WEEK		LAST YEAR				NORTHEAST U.S.		SOUTHEAST U.S.		MIDWEST U.S.		SOUTH CENTRAL							
Feature Rate ^{1/}		22.2% of 29,200 outlets		18.8% of 29,200 outlets		34.1% of 29,200 outlets		Feature Rate ^{1/}		27.5% of 5,500 sampled outlets		36.2% of 7,400 sampled outlets		22.4% of 6,100 sampled outlets		7.1% of 4,900 sampled outlets							
Activity Index ^{2/}		7,194		6,161		14,669		Activity Index ^{2/}		Activity Index = 1,780		Activity Index = 2,885		Activity Index = 1,319		Activity Index = 4							
		Stores	Wtd Avg	Stores	Wtd Avg	Stores	Wtd Avg			price range	stores	wtd avg	price range	stores	wtd avg	price range	stores						
ROTISSERIE:				ROTISSERIE:				ROTISSERIE:				ROTISSERIE:											
Whole Bird				Whole Bird				Whole Bird				Whole Bird											
< 2 lbs.		1,839	6.24	1,995	6.31	2,357	5.53	< 2 lbs.		4.99 - 6.99	338	5.97	4.99 - 7.99	583	6.29	5.50 - 7.99	626	6.38	5.99 - 6.99	56			
2.1-3.0 lbs.		1,089	6.51	853	6.47	1,147	5.84	2.1-3.0 lbs.		5.99 - 6.99	246	6.84	5.99	454	5.99	6.99	215	6.99	5.99	47			
Whole Breast				Whole Breast				Whole Breast				Whole Breast											
Leg Quarter		175	6.60	131	6.90	342	5.00	Leg Quarter					4.99 - 6.99	108	6.36	6.99	108	6.36	6.99	67			
FRIED & BAKED:				FRIED & BAKED:				FRIED & BAKED:				FRIED & BAKED:											
Fried 8-Piece Mix		1,486	7.06	1,559	7.32	4,733	6.32	Fried 8-Piece Mix		5.99 - 7.99	635	7.00	5.99 - 8.99	211	7.14	5.99 - 10.99	289	8.43	5.99 - 9.00	95			
Baked 8-Piece Mix		366	8.06	545	7.91	1,823	5.77	Baked 8-Piece Mix		7.99	266	7.99	7.99	76	7.99	9.00	11	9.00	9.00	13			
F/B 8-Piece Dark		126	6.21	123	6.12	20	6.00	F/B 8-Piece Dark					4.99 - 6.99	87	6.76	4.99	39	4.99					
F/B 12-Piece		10	13.00	238	11.28	420	9.84	F/B 12-Piece								13.00	10	13.00					
Bulk Pack (\$/piece)				63	0.80	500	0.76	Bulk Pack (\$/piece)															
Wings: bone-in		209	5.97	231	8.41	1,751	5.96	Wings: bone-in		7.99	68	7.99	4.99	11	4.99	6.99	12	6.99	4.99	58			
boneless		69	4.99	258	5.99	348	7.10	boneless					4.99	11	4.99				4.99	58			
Tenders				Tenders				Tenders				Tenders											
Strips		1,809	7.35	165	6.07	1,084	6.75	Strips		6.99	227	6.99	5.98 - 7.99	1,452	7.55	5.99	9	5.99					
Popcorn		16	5.59			144	5.38	Popcorn											5.59	16			
								SOUTHWEST U.S.				NORTHWEST U.S.				ALASKA				HAWAII			
Feature Rate ^{1/}								Feature Rate ^{1/}		10.3% of 3,800 sampled outlets		12.5% of 1,300 sampled outlets		11.0% of 100 sampled outlets		2.9% of 100 sampled outlets							
Activity Index ^{2/}								Activity Index ^{2/}		Activity Index = 390		Activity Index = 374		Activity Index = 33		Activity Index =							
										price range stores wtd avg		price range stores wtd avg		price range stores wtd avg		price range stores							
ROTISSERIE:				ROTISSERIE:				ROTISSERIE:				ROTISSERIE:											
Whole Bird				Whole Bird				Whole Bird				Whole Bird											
< 2 lbs.								< 2 lbs.		6.99	109	6.99	5.00 - 5.50	116	5.41	5.50	11	5.50					
2.1-3.0 lbs.								2.1-3.0 lbs.		6.99	111	6.99	7.99	16	7.99								
Whole Breast				Whole Breast				Whole Breast				Whole Breast											
Leg Quarter				Leg Quarter				Leg Quarter				Leg Quarter											
FRIED & BAKED:				FRIED & BAKED:				FRIED & BAKED:				FRIED & BAKED:											
Fried 8-Piece Mix								Fried 8-Piece Mix		5.99	110	5.99	5.00 - 5.99	132	5.48	5.50	11	5.50	5.99	3			
Baked 8-Piece Mix								Baked 8-Piece Mix															
F/B 8-Piece Dark								F/B 8-Piece Dark															
F/B 12-Piece								F/B 12-Piece															
Bulk Pack (\$/piece)								Bulk Pack (\$/piece)															
Wings: bone-in								Wings: bone-in		4.59	60	4.59											
boneless								boneless					5.50 - 6.98	110	5.70	5.50	11	5.50					
Tenders				Tenders				Tenders				Tenders											
Strips				Strips				Strips				Strips											
Popcorn				Popcorn				Popcorn				Popcorn											



Source: USDA Livestock, Poultry, & Grain Market News;
<http://www.ams.usda.gov/market-news/livestock-poultry-grain;>

(404) 562-5850
 Email: Atlanta.lpgmn@ams.usda.gov

Notes:

U.S.
d outlets
110
wtd avg
6.19
5.99
6.99
6.78
9.00
4.99
4.99
5.59
l outlets
3
wtd avg

5.99



USDA National Retail Report - Chicken

Fri. Oct 22, 2021

Advertised Prices for Chicken to Consumers at Major Retail Supermarket Outlets during the period of 10/22 thru 10/28.

(prices in dollars per pound, fresh tray-pack product unless otherwise noted)

	NATIONAL SUMMARY						Feature Rate Comparison																													
	SPECIALTY CHICKEN						% of Stores w/ Ads by Category																													
	THIS WEEK		LAST WEEK		LAST YEAR		■ Regular ■ Prepared ■ Specialty ■ Organic																													
Feature Rate ^{1/}	15.4% of 29,200 outlets		22.5% of 29,200 outlets		16.1% of 29,200 outlets																															
Activity Index ^{2/}	11,228		12,824		8,641																															
	Stores	Wtd Avg	Stores	Wtd Avg	Stores	Wtd Avg																														
Whole Fryer	1,729	2.25	1,479	2.06	1,245	1.69																														
Bnls/Sknls Breast	2,301	4.08	4,579	4.81	3,139	3.40																														
Breast Tenders	835	4.82	1,570	5.24	450	4.09																														
Split, bn-in Breast	1,406	3.19	330	2.17	852	1.38																														
Whole Wings	176	3.88	43	2.99	260	2.94																														
Leg Quarters	325	1.30			232	1.20																														
Legs			92	1.19																																
Thighs	1,933	2.02	2,136	2.06	604	1.69																														
Drumsticks	2,056	1.71	1,952	1.65	1,433	1.48																														
B/S Thighs	467	3.69	643	3.68	426	3.51																														
SPECIALTY	NORTHEAST U.S.						SOUTHEAST U.S.						MIDWEST U.S.						SOUTH CENTRAL U.S.						SOUTHWEST U.S.						NORTHWEST U.S.					
Feature Rate ^{1/}	28.9% of 5,500 sampled outlets						7.4% of 7,400 sampled outlets						11.6% of 6,100 sampled outlets						13.1% of 4,900 sampled outlets						22.5% of 3,800 sampled outlets						6.9% of 1,300 sampled outlets					
Activity Index ^{2/}	Activity Index = 4,651						Activity Index = 2,403						Activity Index = 1,531						Activity Index = 1,116						Activity Index = 1,126						Activity Index = 179					
	price range	stores	wtd avg	price range	stores	wtd avg	price range	stores	wtd avg	price range	stores	wtd avg	price range	stores	wtd avg	price range	stores	wtd avg	price range	stores	wtd avg	price range	stores	wtd avg												
Whole Fryer	1.49 - 6.32	1,504	2.22	1.59 - 3.49	118	2.18	1.47 - 3.49	91	2.35	3.49	7	3.49	6.69	7	6.69	3.49	2	3.49																		
Bnls/Sknls Breast	3.99 - 6.99	562	5.08	2.48 - 3.98	628	3.42	1.99 - 6.49	520	3.79	2.97 - 4.99	326	3.88	3.47 - 3.49	177	3.47	4.99	16	4.99																		
Breast Tenders	4.39 - 6.99	625	5.12				1.99 - 5.99	91	2.56	1.99 - 3.78	89	3.72																								
Split, bn-in Breast	1.89 - 3.29	317	2.75	1.79 - 5.99	1,060	3.29	5.99	5	5.99	5.99	7	5.99	2.68 - 5.99	17	3.07																					
Whole Wings				3.29	131	3.29							4.78	15	4.78																					
Leg Quarters	0.79 - 1.29	127	1.05	0.78	67	0.78	1.19	58	1.19				1.59	43	1.59																					
Legs																																				
Thighs	0.99 - 3.99	748	2.84	0.99 - 2.49	156	1.63	1.49 - 1.79	344	1.72	0.99 - 1.79	342	1.06	1.49	270	1.49	1.59	43	1.59																		
Drumsticks	0.99 - 2.99	412	2.07	0.69 - 1.39	243	0.97	1.49 - 1.79	344	1.72	0.99 - 1.79	342	1.06	1.49 - 2.49	672	2.09	1.59	43	1.59																		
B/S Thighs	3.99	356	3.99				1.99	78	1.99	1.99	3	1.99																								
SPECIALTY	ALASKA						HAWAII																													
Feature Rate ^{1/}	0.0% of 100 sampled outlets						0.0% of 100 sampled outlets																													
Activity Index ^{2/}	Activity Index = 22						Activity Index = 200																													
	price range	stores	wtd avg	price range	stores	wtd avg																														
Whole Fryer																																				
Bnls/Sknls Breast	2.29 - 3.99	22	3.45	7.39 - 7.99	50	7.63																														
Breast Tenders				8.59	30	8.59																														
Split, bn-in Breast																																				
Whole Wings				5.99	30	5.99																														
Leg Quarters				3.29	30	3.29																														
Legs																																				
Thighs				3.69	30	3.69																														
Drumsticks																																				
B/S Thighs				4.79	30	4.79																														

Specialty products are produced from chickens raised on an all vegetable diet without antibiotics and are minimally processed. USDA Certified Organic are products grown and processed according to USDA's national organic standards and certified by USDA-accredited State and private certification organizations. For more information, visit <http://www.ams.usda.gov/nop/>.

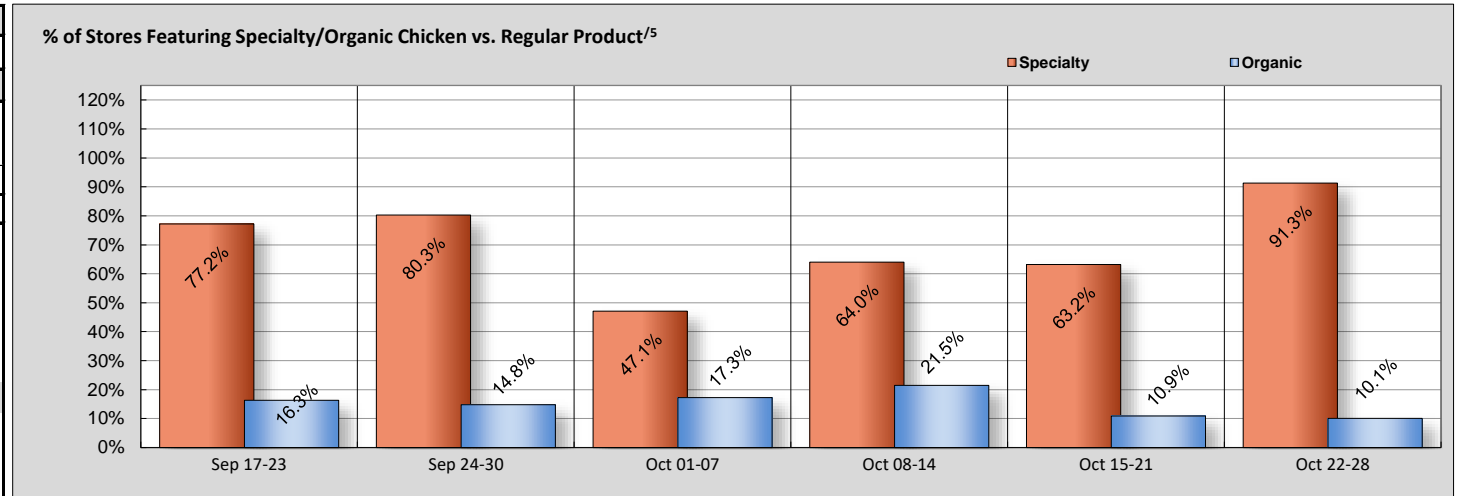


USDA National Retail Report - Chicken

Advertised Prices for Chicken to Consumers at Major Retail Supermarket Outlets during the period of 10/22 thru 10/28.

(prices in dollars per pound, fresh tray-pack product unless otherwise noted)

	NATIONAL SUMMARY					
	USDA ORGANIC CHICKEN					
	THIS WEEK		LAST WEEK		LAST YEAR	
Feature Rate ^{1/}	4.4% of 29,200 outlets		5.0% of 29,200 outlets		5.2% of 29,200 outlets	
Activity Index ^{2/}	1,221		2,080		1,439	
	Stores	Wtd Avg	Stores	Wtd Avg	Stores	Wtd Avg
Whole Fryer	457	3.38	932	4.53	275	3.56
Bnls/Sknls Breast	639	8.05	969	7.73	165	7.68
Breast Tenders					62	9.99
Split, bn-in Breast						
Whole Wings			77	4.99	25	3.49
Leg Quarters	--	--	--	--	--	--
Legs						
Thighs	11	3.49			329	3.07
Drumsticks	114	3.04	25	2.49	583	2.61
B/S Thighs			77	5.99		



^{5/}: % = total store count for Specialty items/by total store count for the same set of regular items.

ORGANIC	NORTHEAST U.S.		SOUTHEAST U.S.		MIDWEST U.S.		SOUTH CENTRAL U.S.		SOUTHWEST U.S.		NORTHWEST U.S.	
		11.7% of 5,500 sampled outlets Activity Index = 536		4.1% of 7,400 sampled outlets Activity Index = 302		4.3% of 6,100 sampled outlets Activity Index = 273		0.7% of 4,900 sampled outlets Activity Index = 34		1.0% of 3,800 sampled outlets Activity Index = 62		0.0% of 1,300 sampled outlets Activity Index = 0
Whole Fryer	2.99 - 3.99	336 3.13	3.99 - 4.99	84 4.47					2.99 - 3.49	37 3.15		
Bnls/Sknls Breast	7.99 - 8.99	97 8.22	8.99	218 8.99	6.99	251 6.99	6.99 - 7.99	34 7.90	9.99	25 9.99		
Breast Tenders												
Split, bn-in Breast												
Whole Wings												
Legs												
Thighs					3.49	11 3.49						
Drumsticks	2.99	103 2.99			3.49	11 3.49						
B/S Thighs												
ORGANIC	ALASKA		HAWAII									
	0.0% of 100 sampled outlets Activity Index = 14		0.0% of 100 sampled outlets Activity Index = 0									
Whole Fryer												
Bnls/Sknls Breast	7.99	14 7.99										
Breast Tenders												
Split, bn-in Breast												
Whole Wings												
Legs												
Thighs												
Drumsticks												
B/S Thighs												

Specialty products are produced from chickens raised on an all vegetable diet without antibiotics and are minimally processed. USDA Certified Organic are products grown and processed according to USDA's national organic standards and certified by USDA-accredited State and private certification organizations. For more information, visit <http://www.ams.usda.gov/nop/>.