



USDA National Retail Report - Chicken

Fri. Jul 31, 2020

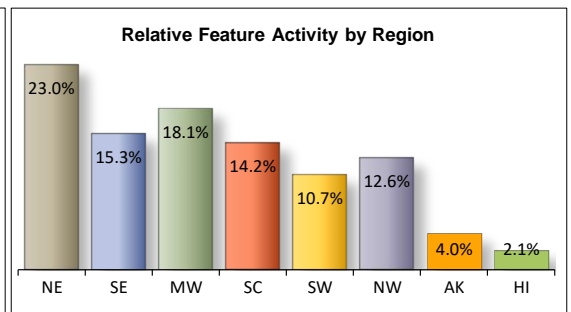
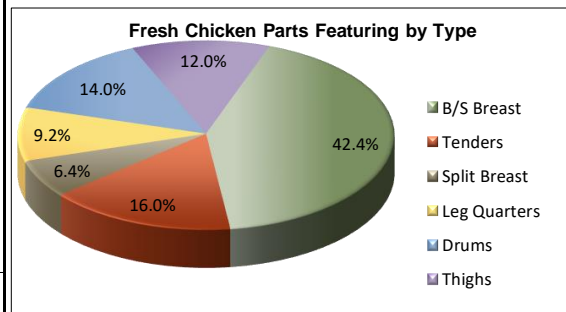
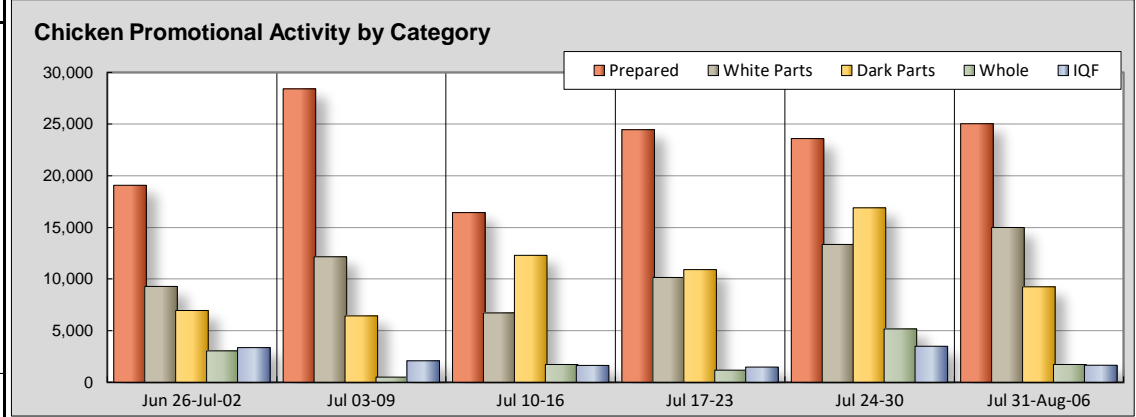
Advertised Prices for Chicken to Consumers at Major Retail Supermarket Outlets during the period of 07/31 thru 08/06.

(prices in dollars per pound, fresh tray-pack product unless otherwise noted)

NATIONAL SUMMARY			
	THIS WEEK	LAST WEEK	LAST YEAR
Feature Rate ^{1/}	66.3% of 29,200 outlets	88.3% of 29,200 outlets	79.7% of 29,200 outlets
Special Rate ^{4/}	10.1%	10.5%	10.1%
Activity Index ^{2/}	52,650	62,499	39,682
WHOLE BIRD:	Stores ^{3/} Wtd Avg	Stores /3 Wtd Avg	Stores /3 Wtd Avg
bagged fryer	1,227 1.12	4,646 1.13	1,841 0.97
cut-up fryer	108 1.25	273 1.44	121 1.50
bagged roaster	342 1.24		49 1.49
Cornish (frs/frz)	50 2.36	251 2.47	89 2.32
PARTS:			
Bnls/Sknls Breast			
regular pack	2,683 2.27	1,587 2.14	1,572 2.97
value pack	5,387 1.89	5,401 2.20	5,145 1.91
thin sliced	346 3.00	675 3.39	649 2.74
marinated	528 4.86	486 4.44	588 3.44
Breast Tenders			
regular pack	1,475 3.29	307 3.39	275 3.07
value pack	1,890 2.15	127 3.31	49 2.21
Split, bn-in Breast			
regular pack	1,101 1.48	172 1.08	2,005 1.38
value pack	256 1.42	4,209 1.04	787 1.22
Whole Wings	1,323 2.52	384 2.80	2,175 2.87
Leg Quarters			
tray pack	864 0.90	572 0.79	332 0.88
bagged	1,074 0.54	1,237 0.55	535 0.65
Legs	441 1.16	106 0.93	165 1.11
Thighs			
regular pack	213 1.15	2,103 0.92	1,639 1.14
value pack	2,325 1.10	3,537 1.03	3,576 0.90
Drumsticks			
regular pack	275 0.95	2,297 0.91	1,670 1.10
value pack	2,676 1.11	4,225 1.00	2,785 0.94
Bnls/Sknls Thighs			
regular pack	594 2.08	644 2.03	149 2.84
value pack	785 2.06	2,172 2.09	835 2.13
9-pc Combos			
drum-thigh-breast			
drum-thigh-wing			3
IQF			
B/S Breast	871 2.34	1,196 2.19	592 2.07
Tenders	290 2.97	392 2.13	217 2.43
Wings	432 2.15	626 2.04	469 2.61
Party Wings	62 2.49	1,278 2.49	88 5.92

This Week's Chicken Feature Highlights

National summary figures are lower compared to both last week and last year's numbers. Bagged fryers return to the playing field as features for all other whole bird items decrease. In the white meat section, B/S breasts, tenders, and wings are boasting strong feature rates as wings, split breasts, value pack B/S breasts, and tenders are available at lower prices. On the other hand, most dark meat items have lost their footing in feature activity while thighs, legs, and tray pack leg quarters are asking for more money. Although the presence of frozen items has decreased all items are still readily available at steady to higher prices. The deli continues to maintain its stride; shoppers flocking to this department will still be able to find bargain prices on some finger foods. Specialty items relax their feature activity while organic items are striving to attract more buyers.



All report information gathered from publicly available sources including store circulars, newspaper ads, and retailer websites.

^{1/} **Feature Rate:** the amount of sampled stores advertising any reported chicken item during the current week, expressed as a percentage of the total sample. ^{2/} **Activity Index:** a measure of the absolute frequency of feature activity equal to the total number of stores for each advertised chicken item (e.g., a retailer with 100 outlets featuring 3 chicken items has an activity index of 300). ^{3/} **Stores/Avg:** the total number of advertising outlets and the weighted average price weighted by the respective number of outlets. ^{4/} **Special Rate:** the percentage of sampled stores with a no-price promotion (e.g., buy 1, get 1 free, etc.)



USDA National Retail Report - Chicken

Advertised Prices for Chicken to Consumers at Major Retail Supermarket Outlets during the period of 07/31 thru 08/06.

(prices in dollars per pound, fresh tray-pack product unless otherwise noted)

Fri. Jul 31, 2020

	NORTHEAST U.S. (CT,DE,MA,MD,ME,NH,NJ,NY,PA,RI,VT)				SOUTHEAST U.S. (AL,FL,GA,MS,NC,SC,TN,VA,WV)				MIDWEST U.S. (IA,IL,IN,KY,MI,MN,ND,NE,OH,SD,WI)			
Feature Rate ^{1/} Special Rate ^{4/} Activity Index ^{2/}	77.8% of 5,500 sampled outlets 1.9% of stores w/ no-price promotions Activity Index = 7,890				66.0% of 7,400 sampled outlets 16.4% of stores w/ no-price promotions Activity Index = 5,280				72.6% of 6,100 sampled outlets 14.7% of stores w/ no-price promotions Activity Index = 6,429			
WHOLE BIRD:	Price Range	Stores	Wtd Avg	Price Range	Stores	Wtd Avg	Price Range	Stores	Wtd Avg			
bagged fryer	0.89 - 1.29	223	1.10	0.75 - 5.99	372	1.23	0.69 - 1.49	246	1.07			
cut-up fryer							0.99	55	0.99			
bagged roaster	1.00 - 1.18	103	1.16				1.28	201	1.28			
Cornish (frs/frz)												
PARTS:	Processor Brand	Store Brand	Stores	Wtd Avg	Processor Brand	Store Brand	Stores	Wtd Avg	Processor Brand	Store Brand	Stores	Wtd Avg
Bnls/Sknls Breast												
regular pack					1.99 - 2.99		500	2.01	2.99		108	2.99
value pack	1.99	1.27 - 2.49	1,218	1.94	1.49 - 1.99		1,345	1.93	1.99 - 2.99	0.99 - 2.99	774	2.25
thin sliced	3.99	3.49	176	3.81						2.69	43	2.69
marinated		6.49	210	6.49					2.99 - 4.99		175	4.44
Breast Tenders												
regular pack		1.99 - 3.99	346	3.61	2.99		11	2.99	2.99	2.99 - 3.99	1,096	3.19
value pack	2.49	1.99 - 3.69	530	2.43	1.99		357	1.99	1.99 - 2.99		687	2.05
Split, bn-in Breast												
regular pack		1.49	82	1.49	1.49		955	1.49		0.99	43	0.99
value pack		0.99 - 1.79	122	1.72	1.29		40	1.29		0.99	12	0.99
Whole Wings		2.49 - 3.00	159	2.73	2.49 - 2.58		985	2.49	1.99 - 2.58		112	2.29
Leg Quarters												
tray pack	0.79	0.49 - 0.99	580	0.89	0.99		76	0.99		0.49 - 0.99	51	0.87
bagged		0.69 - 0.99	217	0.70	0.25		9	0.25	0.59	0.39 - 1.69	584	0.50
Legs	0.99	1.29	240	1.08	0.99		44	0.99		0.49 - 0.79	48	0.72
Thighs												
regular pack					0.99	1.69	141	1.04		0.99 - 1.69	72	1.37
value pack	0.99 - 1.59	0.97 - 1.49	1,406	1.19	1.19	0.98 - 0.99	121	1.05		0.49 - 1.49	364	1.02
Drumsticks												
regular pack		0.79	24	0.79	0.99	0.79	135	0.98		0.99	86	0.99
value pack	0.99 - 1.99	0.97 - 1.49	1,617	1.22	0.79 - 1.19	0.98 - 0.99	153	1.00		0.49 - 1.49	422	0.98
Bnls/Sknls Thighs												
regular pack					1.98		10	1.98	2.99		33	2.99
value pack	1.59	2.99	194	2.50					1.79	1.69 - 2.79	335	1.94
9-pc Combos												
drum-thigh-breast												
drum-thigh-wing												
IQF	B/S Breast	1.59 - 1.99	207	1.97	1.59 - 2.33		26	1.98	2.99 - 3.19	1.89 - 2.66	440	2.53
	Tenders								2.99 - 3.19		184	3.15
	Wings	2.00 - 2.19	174	2.07					2.20		258	2.20
	Party Wings	2.49	62	2.49								



USDA National Retail Report - Chicken

Advertised Prices for Chicken to Consumers at Major Retail Supermarket Outlets during the period of 07/31 thru 08/06.

(prices in dollars per pound, fresh tray-pack product unless otherwise noted)

Fri. Jul 31, 2020

		SOUTH CENTRAL U.S. (AR,CO,KS,LA,MO,NM,OK,TX)				SOUTHWEST U.S. (AZ,CA,NV,UT)				NORTHWEST U.S. (ID,MT,OR,WA,WY)			
Feature Rate ^{1/} Special Rate ^{4/} Activity Index ^{2/}		61.2% of 4,900 sampled outlets 12.7% of stores w/ no-price promotions Activity Index = 3,904				43.7% of 3,800 sampled outlets 0.0% of stores w/ no-price promotions Activity Index = 2,260				77.9% of 1,300 sampled outlets 8.2% of stores w/ no-price promotions Activity Index = 1,792			
WHOLE BIRD:		Price Range	Stores	Wtd Avg	Price Range	Stores	Wtd Avg	Price Range	Stores	Wtd Avg			
			4/			4/			4/				
bagged fryer		0.77 - 1.49	359	1.01	1.99	11	1.99	1.29	10	1.29			
cut-up fryer		1.49 - 1.58	53	1.52									
bagged roaster		1.28	38	1.28									
Cornish (frs/frz)		2.49	2	2.49	1.99 - 2.49	45	2.35	2.49	3	2.49			
PARTS:		Processor Brand	Store Brand	Stores	Wtd Avg	Processor Brand	Store Brand	Stores	Wtd Avg	Processor Brand	Store Brand	Stores	Wtd Avg
Bnls/Sknls Breast													
regular pack		2.99	1.97 - 1.99	1,140	1.99		1.49 - 1.99	249	1.82		2.99	682	2.99
value pack		1.49 - 1.79	0.97 - 3.48	549	1.64	1.29 - 3.99	1.37 - 2.50	760	1.95	1.59	1.47 - 1.99	741	1.49
thin sliced			1.99	67	1.99	1.99		60	1.99				
marinated			2.99	143	2.99								
Breast Tenders													
regular pack			3.99	11	3.99								
value pack			1.99	255	1.99		1.99 - 2.99	46	2.27		2.58	15	2.58
Split, bn-in Breast													
regular pack							1.89	7	1.89		1.89	14	1.89
value pack			0.99	12	0.99	0.99		60	0.99		1.89	10	1.89
Whole Wings			2.79	67	2.79								
Leg Quarters													
tray pack			1.19	22	1.19	0.47	0.99	120	0.73		1.48	15	1.48
bagged			0.25 - 0.49	186	0.40	0.47		60	0.47	1.69		15	1.69
Legs													
Thighs							1.59	109	1.59				
regular pack													
value pack		0.99 - 1.59	0.69	137	1.08	0.79	0.77 - 0.99	283	0.82		1.48	11	1.48
Drumsticks													
regular pack							0.79	30	0.79				
value pack		1.59	0.48 - 0.77	168	0.97		0.69 - 0.99	287	0.83		0.99 - 1.28	15	1.20
Bnls/Sknls Thighs													
regular pack			1.97 - 2.69	512	1.97		2.69	32	2.69	2.99	2.69	7	2.86
value pack		1.79	1.29 - 2.79	91	1.60		1.99 - 2.49	101	2.05	1.99	1.95 - 2.29	64	2.03
9-pc Combos													
drum-thigh-breast													
drum-thigh-wing													
FDI	B/S Breast		1.98 - 2.66	92	2.02						2.66	95	2.66
	Tenders										2.66	95	2.66
	Wings												
	Party Wings												



USDA National Retail Report - Chicken

Advertised Prices for Chicken to Consumers at Major Retail Supermarket Outlets during the period of 07/31 thru 08/06.

(prices in dollars per pound, fresh tray-pack product unless otherwise noted)

Fri. Jul 31, 2020

		ALASKA (AK)				HAWAII (HI)					
Feature Rate ^{1/} Special Rate ^{4/} Activity Index ^{2/}		72.0% of 100 sampled outlets 11.0% of stores w/ no-price promotions Activity Index = 54				24.8% of 100 sampled outlets 0.0% of stores w/ no-price promotions Activity Index = 9					
WHOLE BIRD:		Price Range	Stores	Wtd Avg	Price Range	Stores	Wtd Avg				
			4/			4/					
bagged fryer		2.08 - 2.29	6	2.15							
cut-up fryer											
bagged roaster											
Cornish (frs/frz)											
PARTS:		Processor Brand	Store Brand	Stores	Wtd Avg	Processor Brand	Store Brand	Stores	Wtd Avg		
Bnls/Sknls Breast											
regular pack			1.98	4	1.98						
value pack											
thin sliced											
marinated											
Breast Tenders											
regular pack		3.49		11	3.49						
value pack											
Split, bn-in Breast											
regular pack											
value pack											
Whole Wings											
Leg Quarters											
tray pack											
bagged						1.99		3	1.99		
Legs											
Thighs											
regular pack						1.99		3	1.99		
value pack											
Drumsticks											
regular pack						1.99		3	1.99		
value pack											
regular pack			1.49	11	1.49	1.99		3	1.99		
value pack											
Bnls/Sknls Thighs											
regular pack											
value pack											
9-pc Combos											
drum-thigh-breast											
drum-thigh-wing											
FDI	B/S Breast		2.66	11	2.66						
	Tenders		2.66	11	2.66						
	Wings										
	Party Wings										



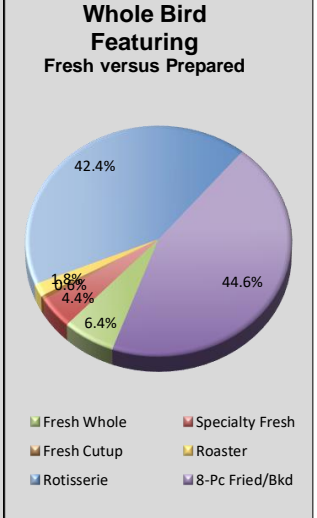
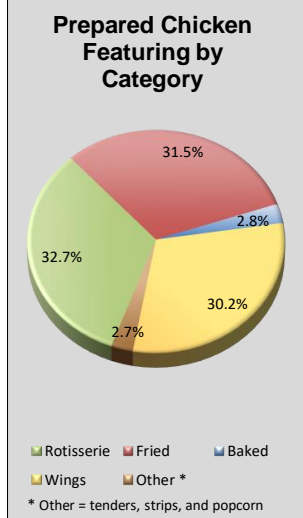
USDA National Retail Report - Chicken

Advertised Prices for Chicken to Consumers at Major Retail Supermarket Outlets during the period of 07/31 thru 08/06.

(prices in dollars per unit or per pound unless otherwise noted)

Fri. Jul 31, 2020

PREPARED FOODS NATIONAL SUMMARY																						
			THIS WEEK	LAST WEEK		LAST YEAR					NORTHEAST U.S.			SOUTHEAST U.S.			MIDWEST U.S.			SOUTH CENTRAL U.S.		
Feature Rate ^{1/}	43.2% of 29,200 outlets		47.8% of 29,200 outlets		27.9% of 29,200 outlets		Feature Rate ^{1/}			42.1% of 5,500 sampled outlets			61.5% of 7,400 sampled outlets			33.7% of 6,100 sampled outlets			48.6% of 4,900 sampled outlets			
Activity Index ^{2/}	25,032		23,596		11,282		Activity Index ^{2/}			Activity Index = 4,242			Activity Index = 8,293			Activity Index = 4,667			Activity Index = 5,034			
	Stores	Wtd Avg	Stores	Wtd Avg	Stores	Wtd Avg	price range stores wtd avg			price range stores wtd avg			price range stores wtd avg			price range stores wtd avg						
ROTISSERIE:																						
Whole Bird																						
< 2 lbs.	7,337	5.07	3,213	5.77	1,991	5.30	4.50 - 6.99 1,191 5.19			4.50 - 7.99 2,586 5.38			4.50 - 7.99 1,429 4.90			4.50 - 6.00 1,357 4.66						
2.1-3.0 lbs.	831	6.14	321	6.08	654	7.05	5.99 - 6.88 147 6.42			4.99 - 5.99 478 5.94			3.99 - 6.99 67 5.78			5.99 - 6.99 118 6.56						
Whole Breast	24	3.29	68	9.99			3.29 24 3.29															
Leg Quarter			17	1.00																		
FRIED & BAKED:																						
Fried 8-Piece Mix																						
	7,202	6.46	8,645	6.19	3,730	6.94	5.00 - 7.99 1,087 6.28			5.98 - 7.49 2,662 6.80			5.00 - 8.99 1,298 6.24			3.99 - 6.99 1,294 6.20						
Baked 8-Piece Mix																						
	705	6.44	3,089	5.90	1,253	6.71	5.00 - 6.99 439 5.96			5.98 - 6.99 176 6.61			6.66 - 6.99 53 6.72									
F/B 8-Piece Dark																						
	157	5.63	229	5.82	132	5.80	6.49 103 6.49			4.00 9 4.00			4.00 45 4.00									
F/B 12-Piece																						
	528	10.80	22	11.99	168	8.99	6.98 - 9.99 317 9.14			11.99 - 12.99 65 12.53			12.99 11 12.99			12.99 - 13.99 135 13.72						
Bulk Pack (\$/piece)																						
			242	0.68	14	0.70																
Wings: bone-in																						
	6,937	5.54	5,676	6.03	855	6.18	3.98 - 6.99 874 5.91			2.68 - 5.99 2,085 5.28			4.99 - 5.99 1,185 5.76			2.99 - 6.49 1,952 5.23						
Wings: boneless																						
	631	5.45	240	5.99	783	6.94	4.99 7 4.99			4.99 - 5.99 221 5.89			4.99 - 5.99 330 5.21			4.99 58 4.99						
Tenders																						
	430	5.84	1,753	6.63	1,534	5.48	8.88 11 8.88			4.99 - 5.99 279 5.03			4.99 - 6.49 51 5.89									
Strips																						
	173	5.00			61	3.10	4.99 15 4.99															
Popcorn																						
	77	8.99	81	5.99	107	4.77	8.99 77 8.99															
SOUTHWEST U.S.																						
Feature Rate ^{1/}																						
24.3% of 3,800 sampled outlets																						
Activity Index ^{2/}																						
Activity Index = 1,961																						
price range stores wtd avg																						
NORTHWEST U.S.																						
Feature Rate ^{1/}																						
22.4% of 1,300 sampled outlets																						
Activity Index ^{2/}																						
Activity Index = 648																						
price range stores wtd avg																						
ALASKA																						
Feature Rate ^{1/}																						
69.0% of 100 sampled outlets																						
Activity Index ^{2/}																						
Activity Index = 137																						
price range stores wtd avg																						
HAWAII																						
Feature Rate ^{1/}																						
28.6% of 100 sampled outlets																						
Activity Index ^{2/}																						
Activity Index = 50																						
price range stores wtd avg																						
ROTISSERIE:																						
Whole Bird																						
< 2 lbs.							4.50 - 6.99 577 4.97			4.50 157 4.50			4.50 10 4.50			4.50 - 6.99 30 6.16						
2.1-3.0 lbs.							7.48 7 7.48			7.48 14 7.48												
Whole Breast																						
Leg Quarter																						
FRIED & BAKED:																						
Fried 8-Piece Mix																						
							5.99 - 6.23 647 6.16			6.23 157 6.23			6.23 - 10.99 47 9.98			6.23 10 6.23						
Baked 8-Piece Mix																						
							10.99 37 10.99															
F/B 8-Piece Dark																						
F/B 12-Piece																						
Bulk Pack (\$/piece)																						
Wings: bone-in																						
							5.98 - 6.99 522 6.08			5.98 - 6.99 277 6.33			5.98 - 6.99 32 6.50			5.98 10 5.98						
Wings: boneless																						
							7.99 89 7.99			5.99 4 5.99			6.49 11 6.49									
Tenders																						
							5.00 119 5.00			4.99 39 4.99												
Strips																						
Popcorn																						



Source: USDA Livestock, Poultry, & Grain Market News;
<http://www.ams.usda.gov/market-news/livestock-poultry-grain>;

(404) 562-5850
 Email: Atlanta.lpgmn@ams.usda.gov

Notes:



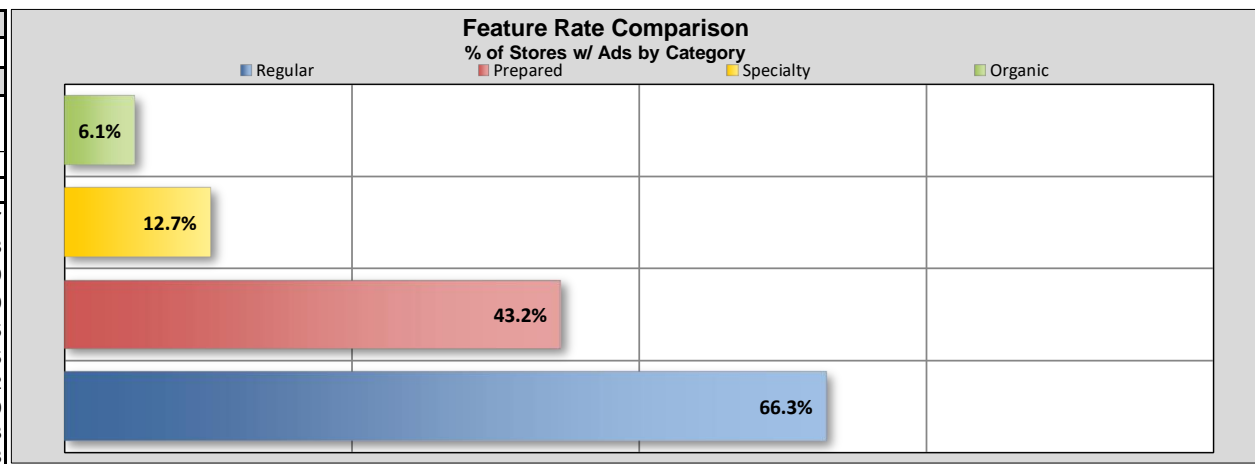
USDA National Retail Report - Chicken

Advertised Prices for Chicken to Consumers at Major Retail Supermarket Outlets during the period of 07/31 thru 08/06.

(prices in dollars per pound, fresh tray-pack product unless otherwise noted)

Fri. Jul 31, 2020

	NATIONAL SUMMARY					
	SPECIALTY CHICKEN					
	THIS WEEK		LAST WEEK		LAST YEAR	
Feature Rate ^{1/}	12.7% of 29,200 outlets		22.5% of 29,200 outlets		38.7% of 29,200 outlets	
Activity Index ^{2/}	9,587		10,323		21,348	
	Stores	Wtd Avg	Stores	Wtd Avg	Stores	Wtd Avg
Whole Fryer	849	1.63	793	2.19	1,704	1.57
Bnls/Sknls Breast	3,370	3.83	5,083	4.66	8,298	4.58
Breast Tenders	789	3.83	707	4.21	1,098	4.39
Split, bn-in Breast	866	2.02	668	2.07	669	2.00
Whole Wings	362	3.27	322	3.22	491	2.85
Leg Quarters	187	0.99	358	0.72	441	1.15
Legs			105	1.57	222	1.12
Thighs	1,426	2.36	1,232	2.17	5,852	1.90
Drumsticks	1,000	1.62	845	1.74	1,830	1.53
B/S Thighs	738	2.55	210	2.99	743	3.38



SPECIALTY	NORTHEAST U.S.			SOUTHEAST U.S.			MIDWEST U.S.			SOUTH CENTRAL U.S.			SOUTHWEST U.S.			NORTHWEST U.S.		
Feature Rate ^{1/}	24.8% of 5,500 sampled outlets			7.7% of 7,400 sampled outlets			12.8% of 6,100 sampled outlets			8.3% of 4,900 sampled outlets			12.4% of 3,800 sampled outlets			6.8% of 1,300 sampled outlets		
Activity Index ^{2/}	Activity Index = 4,800			Activity Index = 1,767			Activity Index = 1,100			Activity Index = 654			Activity Index = 985			Activity Index = 107		
	price range	stores	wtd avg	price range	stores	wtd avg	price range	stores	wtd avg	price range	stores	wtd avg	price range	stores	wtd avg	price range	stores	wtd avg
Whole Fryer	1.29 - 2.49	562	1.75	2.49	2	2.49	1.39 - 1.99	169	1.58	0.77 - 1.29	60	0.98	1.19	35	1.19	1.29	21	1.29
Bnls/Sknls Breast	2.99 - 5.99	1,630	4.59	1.68 - 5.99	483	3.79	1.88 - 4.99	630	2.64	2.99 - 4.99	104	3.62	1.68 - 5.49	429	2.66	2.99 - 5.49	34	4.28
Breast Tenders	3.99 - 5.99	449	4.50	2.28	200	2.28	2.69 - 5.49	112	4.13	2.59 - 5.49	28	3.00						
Split, bn-in Breast	1.39 - 3.00	439	1.84	4.99	26	4.99	1.49 - 4.99	94	1.68	1.99 - 4.99	294	2.06				3.69 - 4.99	13	3.89
Whole Wings	2.99 - 3.99	231	3.49	2.89	131	2.89												
Leg Quarters							0.99	58	0.99	1.29	10	1.29	0.97	119	0.97			
Legs																		
Thighs	1.19 - 2.69	561	1.84	1.19 - 3.49	540	3.13	1.69 - 2.49	26	2.15	1.69 - 3.49	84	2.85	0.97	119	0.97	2.49	39	2.49
Drumsticks	0.99 - 2.69	661	1.70	0.99 - 1.29	102	1.21	1.69	11	1.69	1.69 - 2.22	50	1.94	0.97	119	0.97			
B/S Thighs	2.46 - 2.99	267	2.77	2.28 - 3.99	283	2.78				2.59	24	2.59	1.68 - 2.29	164	1.81			

SPECIALTY	ALASKA			HAWAII											
Feature Rate ^{1/}	0.0% of 100 sampled outlets			0.0% of 100 sampled outlets											
Activity Index ^{2/}	Activity Index = 111			Activity Index = 63											
	price range	stores	wtd avg	price range	stores	wtd avg									
Whole Fryer															
Bnls/Sknls Breast	3.99	37	3.99	2.99 - 5.99	23	5.60									
Breast Tenders															
Split, bn-in Breast															
Whole Wings															
Leg Quarters															
Legs															
Thighs	1.99	37	1.99	3.39	20	3.39									
Drumsticks	1.99	37	1.99	3.39	20	3.39									
B/S Thighs															

Specialty products are produced from chickens raised on an all vegetable diet without antibiotics and are minimally processed. USDA Certified Organic are products grown and processed according to USDA's national organic standards and certified by USDA-accredited State and private certification organizations. For more information, visit <http://www.ams.usda.gov/nop/>.

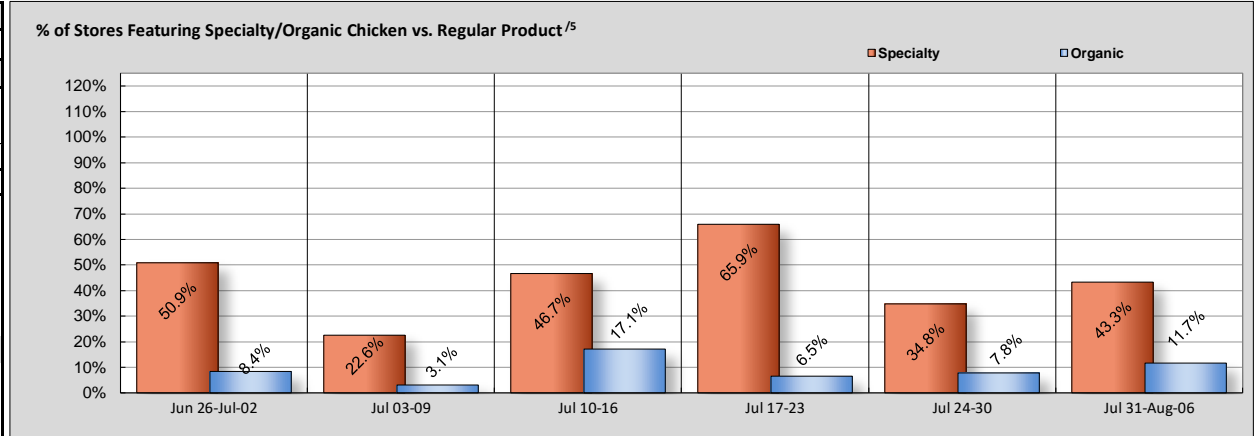


USDA National Retail Report - Chicken

Advised Prices for Chicken to Consumers at Major Retail Supermarket Outlets during the period of 07/31 thru 08/06.

(prices in dollars per pound, fresh tray-pack product unless otherwise noted)

	NATIONAL SUMMARY					
	USDA ORGANIC CHICKEN					
	THIS WEEK		LAST WEEK		LAST YEAR	
Feature Rate ^{1/}	6.1% of 29,200 outlets		4.8% of 29,200 outlets		20.4% of 29,200 outlets	
Activity Index ^{2/}	2,188		2,326		10,553	
	Stores	Wtd Avg	Stores	Wtd Avg	Stores	Wtd Avg
Whole Fryer	458	3.13	595	4.18	1,813	3.03
Bnls/Sknls Breast	859	8.59	309	7.51	4,999	6.94
Breast Tenders	244	9.63	461	9.47	670	8.45
Split, bn-in Breast					68	4.99
Whole Wings					239	3.99
Leg Quarters	--	--	--	--	--	--
Legs			288	4.99		
Thighs	210	3.99	64	5.09	1,491	5.20
Drumsticks	393	2.86	609	3.79	1,236	4.70
B/S Thighs	24	5.99			37	4.99



^{5/}: % = total store count for Specialty items/by total store count for the same set of regular items.

ORGANIC	NORTHEAST U.S.			SOUTHEAST U.S.			MIDWEST U.S.			SOUTH CENTRAL U.S.			SOUTHWEST U.S.			NORTHWEST U.S.					
		14.2% of 5,500 sampled outlets			1.8% of 7,400 sampled outlets			5.8% of 6,100 sampled outlets			1.9% of 4,900 sampled outlets			7.9% of 3,800 sampled outlets			8.5% of 1,300 sampled outlets				
	Activity Index = 1,057			Activity Index = 118			Activity Index = 351			Activity Index = 117			Activity Index = 421			Activity Index = 111					
Whole Fryer	3.89	64	3.89	2.99	30	2.99	5.99	8.99	262	7.01	2.99	93	2.99	2.99	3.29	255	3.02	2.99	16	2.99	
Bnls/Sknls Breast	7.49	9.99	506	9.52			8.99	89	8.99					7.99	89	7.99					
Breast Tenders	9.99	155	9.99																		
Split, bn-in Breast																					
Whole Wings																					
Legs																					
Thighs	3.99	166	3.99	3.99	44	3.99															
Drumsticks	2.99	166	2.99	2.99	44	2.99								2.99	77	2.99			2.49	95	2.49
B/S Thighs											5.99	24	5.99								
ORGANIC	ALASKA			HAWAII																	
	13.0% of 100 sampled outlets			2.9% of 100 sampled outlets																	
	Activity Index = 13			Activity Index = 0																	
Whole Fryer																					
Bnls/Sknls Breast	6.49	2	6.49																		
Breast Tenders																					
Split, bn-in Breast																					
Whole Wings																					
Legs																					
Thighs																					
Drumsticks	2.49	11	2.49																		
B/S Thighs																					

Specialty products are produced from chickens raised on an all vegetable diet without antibiotics and are minimally processed. USDA Certified Organic are products grown and processed according to USDA's national organic standards and certified by USDA-accredited State and private certification organizations. For more information, visit <http://www.ams.usda.gov/nop/>.