



**USDA National Retail Report - Chicken**

Fri. Sep 17, 2021

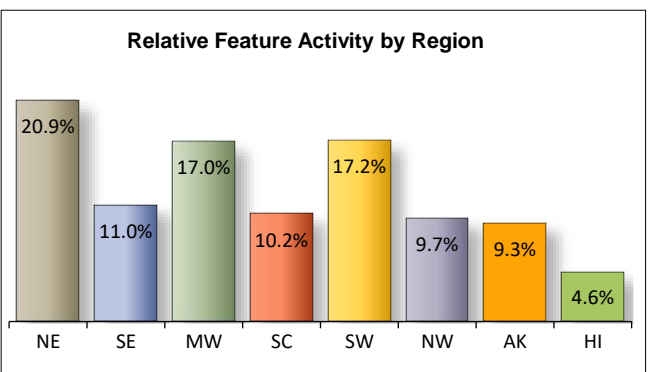
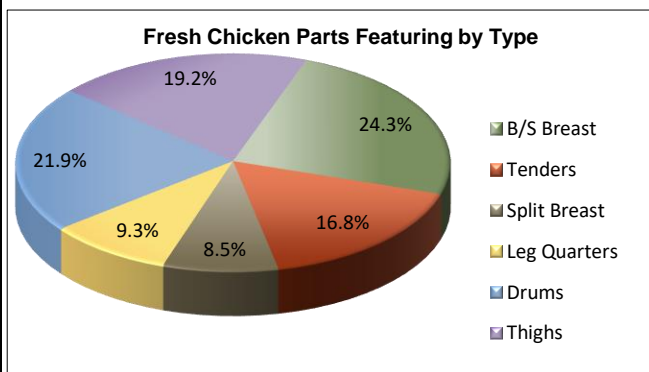
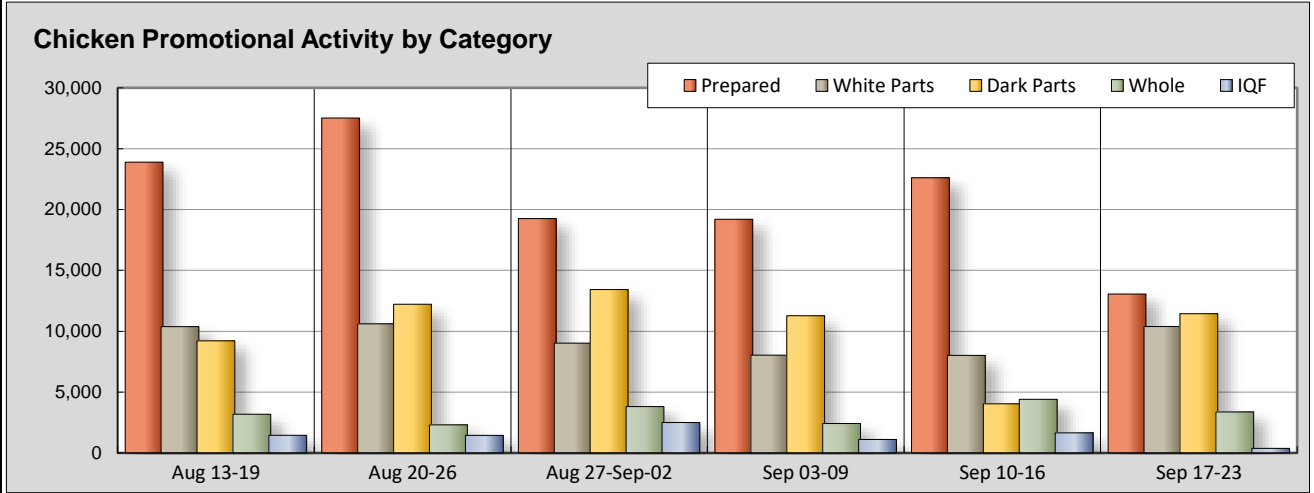
**Advertised Prices for Chicken to Consumers at Major Retail Supermarket Outlets during the period of 09/17 thru 09/23.**

(prices in dollars per pound, fresh tray-pack product unless otherwise noted)

NATIONAL SUMMARY						
	THIS WEEK		LAST WEEK		LAST YEAR	
<b>Feature Rate</b> <sup>1/</sup>	88.3% of 29,200 outlets		73.1% of 29,200 outlets		85.7% of 29,200 outlets	
<b>Special Rate</b> <sup>4/</sup>	8.0%		10.2%		6.8%	
<b>Activity Index</b> <sup>2/</sup>	38,638		40,740		54,712	
<b>WHOLE BIRD:</b>	Stores <sup>3/</sup>	Wtd Avg	Stores /3	Wtd Avg	Stores /3	Wtd Avg
bagged fryer	1,802	1.37	3,153	1.42	4,431	1.02
cut-up fryer			265	1.54	145	1.29
bagged roaster	1,568	1.25	428	1.50	11	0.79
Cornish (frs/frz)			563	3.03		
<b>PARTS:</b>						
<b>Bnls/Sknls Breast</b>						
regular pack	1,252	3.25	2,786	2.97	1,122	2.81
value pack	2,975	2.52	3,636	2.30	5,898	1.92
thin sliced	476	3.99	266	3.71	1,443	2.95
marinated	249	4.78	458	3.66	370	3.38
<b>Breast Tenders</b>						
regular pack	405	3.13	300	3.99	161	3.25
value pack	3,014	2.99	177	3.65	284	3.25
<b>Split, bn-in Breast</b>						
regular pack	33	1.74	158	1.58	1,195	1.96
value pack	1,702	1.10	106	1.43	1,870	1.64
<b>Whole Wings</b>	283	4.17	132	3.95	2,044	2.92
<b>Leg Quarters</b>						
tray pack	769	1.07	344	1.27	545	0.90
bagged	1,116	0.57	767	0.69	949	0.48
<b>Legs</b>	12	0.79			344	0.99
<b>Thighs</b>						
regular pack	205	1.16	388	2.49	1,716	0.87
value pack	3,713	1.09	586	1.27	2,755	0.99
<b>Drumsticks</b>						
regular pack	941	1.02	202	0.89	1,994	0.87
value pack	3,512	1.10	1,077	1.08	3,141	0.98
<b>Bnls/Sknls Thighs</b>						
regular pack	54	2.59	229	1.98	695	2.81
value pack	1,119	2.35	446	2.63	904	1.98
<b>9-pc Combos</b>						
drum-thigh-breast						
drum-thigh-wing			11	0.79		
<b>IQF</b>						
B/S Breast	254	2.27	1,143	2.54	787	1.94
Tenders			119	2.80		
Wings	62	2.39	251	4.40	91	2.35
Party Wings	62	2.49	139	3.05	277	2.87

**This Week's Chicken Feature Highlights**

As we roll into football season, the feature rate is higher and activity index is slightly lower when compared to the previous week. Whole fryers take significant drop in volume this week with a slight drop in prices. White parts have a mixed hand, with tenders and whole wings taking the lead in price and volume. Dark meat items are raising in activity with bulk pack thighs, drums and b/s thighs increasing volumes significantly with a price drop on thighs and value pack b/s thighs. IQF reduces volumes in all areas. The deli pushes bone-in wings and tenders, prices are mixed. Specialty items increases in volume, while organic drops slightly.



All report information gathered from publicly available sources including store circulars, newspaper ads, and retailer websites.

**1/ Feature Rate:** the amount of sampled stores advertising any reported chicken item during the current week, expressed as a percentage of the total sample. **2/ Activity Index:** a measure of the absolute frequency of feature activity equal to the total number of stores for each advertised chicken item (e.g., a retailer with 100 outlets featuring 3 chicken items has an activity index of 300). **3/ Stores/Avg:** the total number of advertising outlets and the weighted average price weighted by the respective number of outlets. **4/ Special Rate:** the percentage of sampled stores with a no-price promotion (e.g., buy 1, get 1 free, etc.)



**USDA National Retail Report - Chicken**  
**Advertised Prices for Chicken to Consumers at Major Retail Supermarket Outlets during the period of 09/17 thru 09/23.**  
 (prices in dollars per pound, fresh tray-pack product unless otherwise noted)

Fri. Sep 17, 2021

	NORTHEAST U.S. (CT,DE,MA,MD,ME,NH,NJ,NY,PA,RI,VT)				SOUTHEAST U.S. (AL,FL,GA,MS,NC,SC,TN,VA,WV)				MIDWEST U.S. (IA,IL,IN,KY,MI,MN,ND,NE,OH,SD,WI)			
Feature Rate <sup>1/</sup> Special Rate <sup>4/</sup> Activity Index <sup>2/</sup>	87.8% of 5,500 sampled outlets 9.9% of stores w/ no-price promotions Activity Index = 7,200				93.7% of 7,400 sampled outlets 10.5% of stores w/ no-price promotions Activity Index = 4,946				88.7% of 6,100 sampled outlets 1.8% of stores w/ no-price promotions Activity Index = 6,006			
WHOLE BIRD:	Price Range	Stores	Wtd Avg		Price Range	Stores	Wtd Avg		Price Range	Stores	Wtd Avg	
			4/				4/				4/	
bagged fryer	1.49 - 1.89	372	1.76		1.49 - 1.89	4	1.69		0.99 - 1.89	842	1.10	
cut-up fryers												
bagged roaster	1.29 - 1.49	396	1.39		1.19 - 1.49	1,150	1.19					
Cornish (frs/frz)												
PARTS:	Processor Brand	Store Brand	Stores	Wtd Avg	Processor Brand	Store Brand	Stores	Wtd Avg	Processor Brand	Store Brand	Stores	Wtd Avg
<b>Bnls/Sknls Breast</b>												
regular pack		2.49 - 3.49	192	3.08		3.29 - 3.49	999	3.30		2.69 - 2.99	45	2.77
value pack	1.99	1.99 - 3.99	1,148	2.48	1.99	2.48 - 2.99	192	2.47	1.99 - 2.99	1.99 - 3.49	659	2.42
thin sliced	4.49	2.88 - 3.99	362	4.02		3.99	44	3.99				
marinated										3.99 - 7.99	192	4.99
<b>Breast Tenders</b>												
regular pack					2.58	3.99	283	2.99	2.99	4.49	122	3.43
value pack		2.49 - 3.99	552	3.01		2.79 - 2.99	1,312	2.84		2.99 - 3.79	855	3.18
<b>Split, bn-in Breast</b>												
regular pack						1.19	23	1.19	2.99		10	2.99
value pack		1.99	61	1.99						0.99 - 1.49	182	1.30
<b>Whole Wings</b>		4.99	103	4.99						3.69 - 3.99	130	3.89
<b>Leg Quarters</b>												
tray pack	1.29	0.99	400	1.21		0.89	69	0.89		0.88 - 1.19	184	0.91
bagged		0.69 - 0.99	201	0.86		0.39 - 0.69	417	0.45		0.39 - 0.99	197	0.61
<b>Legs</b>										0.79	12	0.79
<b>Thighs</b>												
regular pack		0.99 - 1.00	110	0.99	1.49	0.98	36	1.12	1.49		59	1.49
value pack	1.19	0.88 - 1.49	1,289	1.20		0.98 - 1.49	136	1.04		0.79 - 1.69	901	1.05
<b>Drumsticks</b>												
regular pack		0.99 - 1.00	110	0.99	1.49	0.98	36	1.12	1.49	0.99	767	1.03
value pack	1.19	0.88 - 1.49	1,233	1.18		0.98 - 1.49	136	1.04		0.79 - 1.99	277	1.38
<b>Bnls/Sknls Thighs</b>												
regular pack						2.49	12	2.49				
value pack	2.49	1.99 - 2.99	547	2.36	2.49	2.99	87	2.55	1.99	1.69 - 3.29	427	2.21
<b>9-pc Combos</b>												
drum-thigh-breast												
drum-thigh-wing												
<b>ICF</b>						1.49	10	1.49	2.00 - 2.40	1.49 - 2.00	145	1.89
<b>B/S Breast Tenders</b>												
<b>Wings</b>		2.39	62	2.39								
<b>Party Wings</b>		2.49	62	2.49								



**USDA National Retail Report - Chicken**

Advertised Prices for Chicken to Consumers at Major Retail Supermarket Outlets during the period of 09/17 thru 09/23.

(prices in dollars per pound, fresh tray-pack product unless otherwise noted)

Fri. Sep 17, 2021

	SOUTH CENTRAL U.S. (AR,CO,KS,LA,MO,NM,OK,TX)				SOUTHWEST U.S. (AZ,CA,NV,UT)				NORTHWEST U.S. (ID,MT,OR,WA,WY)			
<b>Feature Rate</b> <sup>1/</sup>	89.7% of 4,900 sampled outlets				79.8% of 3,800 sampled outlets				83.6% of 1,300 sampled outlets			
<b>Special Rate</b> <sup>4/</sup>	1.0% of stores w/ no-price promotions				4.7% of stores w/ no-price promotions				52.5% of stores w/ no-price promotions			
<b>Activity Index</b> <sup>2/</sup>	Activity Index = 2,767				Activity Index = 4,422				Activity Index = 100			
<b>WHOLE BIRD:</b>	Price Range		Stores	Wtd Avg	Price Range		Stores	Wtd Avg	Price Range		Stores	Wtd Avg
			4/				4/				4/	
bagged fryer	0.99 - 1.69		408	1.47	1.29 - 1.79		130	1.35				
cut-up fryer												
bagged roaster	1.29		11	1.29					1.99		11	1.99
Cornish (frs/frz)												
<b>PARTS:</b>	Processor Brand	Store Brand	Stores	Wtd Avg	Processor Brand	Store Brand	Stores	Wtd Avg	Processor Brand	Store Brand	Stores	Wtd Avg
<b>Bnls/Sknls Breast</b>												
regular pack						3.29	14	3.29				
value pack	3.49 - 3.59	1.97 - 2.99	876	2.51	3.49	2.79 - 4.99	82	3.47		2.99 - 4.99	18	4.77
thin sliced		3.28	16	3.28		3.99	54	3.99				
marinated		2.98 - 5.98	57	4.09								
<b>Breast Tenders</b>												
regular pack												
value pack		2.99 - 3.79	262	3.11		2.99	33	2.99				
<b>Split, bn-in Breast</b>												
regular pack												
value pack	1.59		60	1.59	0.99	1.29	1,399	1.01				
<b>Whole Wings</b>	3.49		20	3.49								
<b>Leg Quarters</b>												
tray pack	0.89	0.89	77	0.89						1.19	39	1.19
bagged	0.47	0.39 - 0.69	301	0.51								
<b>Legs</b>												
<b>Thighs</b>												
regular pack												
value pack		0.99	28	0.99	0.99		1,290	0.99		1.49	16	1.49
<b>Drumsticks</b>												
regular pack						0.79	28	0.79				
value pack	1.29	0.48 - 1.19	458	1.05	0.99	0.99 - 1.59	1,392	0.99		1.59	16	1.59
<b>Bnls/Sknls Thighs</b>												
regular pack		2.49	36	2.49								
value pack		2.99	58	2.99								
<b>9-pc Combos</b>												
drum-thigh-breast												
drum-thigh-wing												
<b>IDE</b>	<b>B/S Breast</b>	2.40 - 2.99		99	2.91							
	<b>Tenders</b>											
	<b>Wings</b>											
	<b>Party Wings</b>											



**USDA National Retail Report - Chicken**  
**Advertised Prices for Chicken to Consumers at Major Retail Supermarket Outlets during the period of 09/17 thru 09/23.**  
 (prices in dollars per pound, fresh tray-pack product unless otherwise noted)

Fri. Sep 17, 2021

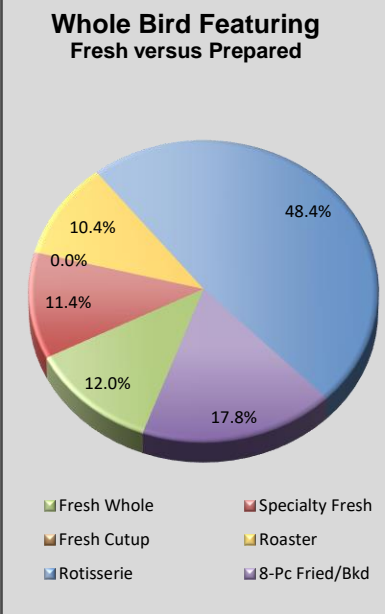
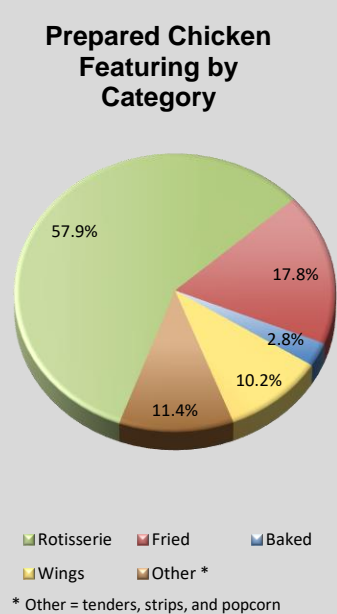
		ALASKA (AK)				HAWAII (HI)					
<b>Feature Rate</b> <sup>1/</sup>		26.0% of 100 sampled outlets				68.6% of 100 sampled outlets					
<b>Special Rate</b> <sup>4/</sup>		0.0% of stores w/ no-price promotions				0.0% of stores w/ no-price promotions					
<b>Activity Index</b> <sup>2/</sup>		Activity Index = 15				Activity Index = 122					
<b>WHOLE BIRD:</b>		Price Range	Stores	Wtd Avg	Price Range	Stores	Wtd Avg				
				4/			4/				
bagged fryer					2.29	46	2.29				
cut-up fryer											
bagged roaster											
Cornish (frs/frz)											
<b>PARTS:</b>		Processor Brand	Store Brand	Stores	Wtd Avg	Processor Brand	Store Brand	Stores	Wtd Avg		
<b>Bnls/Sknls Breast</b>											
regular pack			3.59	2	3.59						
value pack											
thin sliced											
marinated											
<b>Breast Tenders</b>											
regular pack											
value pack											
<b>Split, bn-in Breast</b>											
regular pack											
value pack											
<b>Whole Wings</b>											
					2.99	30	2.99				
<b>Leg Quarters</b>											
tray pack											
bagged											
<b>Legs</b>											
<b>Thighs</b>											
regular pack			1.79	7	1.79	1.49	46	1.49			
value pack											
<b>Drumsticks</b>											
regular pack											
value pack											
<b>Bnls/Sknls Thighs</b>											
regular pack			3.28 - 3.59	6	3.38						
value pack											
<b>9-pc Combos</b>											
drum-thigh-breast											
drum-thigh-wing											
<b>IDF</b>	<b>B/S Breast</b>										
	<b>Tenders</b>										
	<b>Wings</b>										
	<b>Party Wings</b>										



**USDA National Retail Report - Chicken**  
**Advertised Prices for Chicken to Consumers at Major Retail Supermarket Outlets during the period of 09/17 thru 09/23.**  
 (prices in dollars per unit or per pound unless otherwise noted)

Fri. Sep 17, 2021

PREPARED FOODS NATIONAL SUMMARY																											
			THIS WEEK		LAST WEEK		LAST YEAR					NORTHEAST U.S.			SOUTHEAST U.S.			MIDWEST U.S.			SOUTH CENTRAL U.S.						
Feature Rate <sup>1/</sup>			38.1% of 29,200 outlets		46.4% of 29,200 outlets		52.0% of 29,200 outlets		Feature Rate <sup>1/</sup>			34.7% of 5,500 sampled outlets			46.7% of 7,400 sampled outlets			39.3% of 6,100 sampled outlets			45.0% of 4,900 sampled						
Activity Index <sup>2/</sup>			13,060		22,610		21,540		Activity Index <sup>2/</sup>			Activity Index = 2,346			Activity Index = 4,018			Activity Index = 2,456			Activity Index = 2,78						
			Stores Wtd Avg		Stores Wtd Avg		Stores Wtd Avg					price range stores wtd avg			price range stores wtd avg			price range stores wtd avg			price range stores						
<b>ROTISSERIE:</b>									<b>ROTISSERIE:</b>																		
Whole Bird									Whole Bird																		
< 2 lbs.			6,823	5.20	11,877	4.74	9,948	5.21	4.50 - 6.99			629	4.89	4.50 - 6.98			2,688	5.57	4.50 - 6.99			1,058	4.79	4.50 - 6.99		1,803	
2.1-3.0 lbs.			472	7.33	1,106	5.38	1,077	5.37	2.1-3.0 lbs.					7.99			162	7.99	6.99			40	6.99	6.99		67	
Whole Breast			202	6.93					Whole Breast			6.99	71	6.99			5.99 - 6.99			64	6.80	6.99		67			
Leg Quarter			59	1.20					Leg Quarter								1.20			59	1.20						
<b>FRIED &amp; BAKED:</b>									<b>FRIED &amp; BAKED:</b>																		
Fried 8-Piece Mix			1,965	7.03	5,196	6.23	4,366	5.90	Fried 8-Piece Mix			4.99 - 8.49	592	6.95	4.99 - 9.99			979	6.83	5.99 - 9.00			306	7.63	6.99 - 8.99		88
Baked 8-Piece Mix			362	6.42	1,858	5.30	2,614	5.91	Baked 8-Piece Mix			5.99	227	5.99	6.99 - 9.00			132	7.14	6.99			3	6.99		3	
F/B 8-Piece Dark			103	6.00			58	5.49	F/B 8-Piece Dark			6.00	103	6.00	11.99 - 13.99			64	12.33	13.99		13	13.99		13		
F/B 12-Piece			256	11.12	199	12.04	215	10.27	F/B 12-Piece																		
Bulk Pack (\$/piece)					53	0.80	130	0.84	Bulk Pack (\$/piece)																		
<b>Wings:</b> bone-in			823	7.21	710	6.70	1,608	6.36	<b>Wings:</b> bone-in			8.99	93	8.99	4.99			11	4.99	6.99			75	6.99	4.99 - 6.99		579
boneless			508	5.54	1,143	5.79	391	5.70	boneless						4.99			11	4.99	5.49 - 5.99			403	5.67	4.49 - 5.49		94
<b>Tenders</b>			1,433	7.37	468	6.73	1,014	6.14	<b>Tenders</b>			5.99 - 7.99	631	7.25	5.99 - 6.99			167	6.96	5.99 - 7.99			240	7.78	5.99 - 6.99		134
<b>Strips</b>			54	4.99			119	6.99	<b>Strips</b>						4.99			15	4.99								
<b>Popcorn</b>									<b>Popcorn</b>																		
									SOUTHWEST U.S.			NORTHWEST U.S.			ALASKA			HAWAII									
Feature Rate <sup>1/</sup>									23.7% of 3,800 sampled outlets			17.6% of 1,300 sampled outlets			10.0% of 100 sampled outlets			9.5% of 100 sampled outlets									
Activity Index <sup>2/</sup>									Activity Index = 1,214			Activity Index = 225			Activity Index = 10			Activity Index = 10									
									price range stores wtd avg			price range stores wtd avg			price range stores wtd avg			price range stores									
<b>ROTISSERIE:</b>									<b>ROTISSERIE:</b>																		
Whole Bird									Whole Bird																		
< 2 lbs.									4.50			468	4.50	4.50			157	4.50	4.50			10	4.50	4.50		10	
2.1-3.0 lbs.									6.99			270	6.99														
Whole Breast									Whole Breast																		
Leg Quarter									Leg Quarter																		
<b>FRIED &amp; BAKED:</b>									<b>FRIED &amp; BAKED:</b>																		
Fried 8-Piece Mix									Fried 8-Piece Mix										Fried 8-Piece Mix					Fried 8-Piece Mix			
Baked 8-Piece Mix									Baked 8-Piece Mix										Baked 8-Piece Mix					Baked 8-Piece Mix			
F/B 8-Piece Dark									F/B 8-Piece Dark										F/B 8-Piece Dark					F/B 8-Piece Dark			
F/B 12-Piece									F/B 12-Piece			10.48	179	10.48	10.48			179	10.48	10.48			179	10.48	10.48		
Bulk Pack (\$/piece)									Bulk Pack (\$/piece)										Bulk Pack (\$/piece)					Bulk Pack (\$/piece)			
<b>Wings:</b> bone-in									<b>Wings:</b> bone-in			9.99	54	9.99	5.99			11	5.99	5.99					5.99		
boneless									boneless						7.99			243	7.99	10.99			18	10.99	10.99		
<b>Tenders</b>									<b>Tenders</b>						4.99			39	4.99	4.99					4.99		
<b>Strips</b>									<b>Strips</b>																		
<b>Popcorn</b>									<b>Popcorn</b>																		



Source: USDA Livestock, Poultry, & Grain Market News;  
<http://www.ams.usda.gov/market-news/livestock-poultry-grain;>

(404) 562-5850  
 Email: Atlanta.lpgmn@ams.usda.gov

Notes:

---

I.S.
outlets
31
wtd avg
5.25
6.99
7.73
6.99
13.99
6.75
5.05
6.08

outlets
wtd avg

4.50

---

---

---

---



**USDA National Retail Report - Chicken**  
**Advertised Prices for Chicken to Consumers at Major Retail Supermarket Outlets during the period of 09/17 thru 09/23.**  
 (prices in dollars per pound, fresh tray-pack product unless otherwise noted)

Fri. Sep 17, 2021

NATIONAL SUMMARY							Feature Rate Comparison % of Stores w/ Ads by Category													
SPECIALTY CHICKEN							<span style="color:blue">■</span> Regular <span style="color:red">■</span> Prepared <span style="color:yellow">■</span> Specialty <span style="color:green">■</span> Organic													
	THIS WEEK		LAST WEEK		LAST YEAR															
Feature Rate <sup>1/</sup>	32.8% of 29,200 outlets		31.4% of 29,200 outlets		15.4% of 29,200 outlets															
Activity Index <sup>2/</sup>	15,915		9,358		10,767															
	Stores	Wtd Avg	Stores	Wtd Avg	Stores	Wtd Avg														
Whole Fryer	1,721	1.88	1,534	1.65	2,081	1.81														
Bnls/Sknl Breast	5,128	4.30	2,458	3.41	2,479	4.45														
Breast Tenders	1,675	4.74	510	4.51	298	3.06														
Split, bn-in Breast	395	2.48	792	2.47	665	1.54														
Whole Wings	375	1.79	185	3.96	190	2.88														
Leg Quarters	235	0.74	330	1.43	205	1.15														
Legs					194	1.34														
Thighs	2,620	1.71	1,502	2.02	1,975	1.51														
Drumsticks	2,410	1.33	1,195	1.46	2,094	1.63														
B/S Thighs	1,356	3.23	852	3.33	586	3.35														

SPECIALTY	NORTHEAST U.S.			SOUTHEAST U.S.			MIDWEST U.S.			SOUTH CENTRAL U.S.			SOUTHWEST U.S.			NORTHWEST U.S.		
Feature Rate <sup>1/</sup>	40.7% of 5,500 sampled outlets			26.1% of 7,400 sampled outlets			33.4% of 6,100 sampled outlets			22.8% of 4,900 sampled outlets			37.5% of 3,800 sampled outlets			61.3% of 1,300 sampled outlets		
Activity Index <sup>2/</sup>	Activity Index = 5,695			Activity Index = 1,860			Activity Index = 2,838			Activity Index = 1,204			Activity Index = 2,612			Activity Index = 1,613		
	price range	stores	wtd avg	price range	stores	wtd avg	price range	stores	wtd avg	price range	stores	wtd avg	price range	stores	wtd avg	price range	stores	wtd avg
Whole Fryer	1.49 - 2.49	1,087	1.96	1.39 - 1.99	219	1.79	0.99 - 1.99	192	1.45	1.75 - 1.99	94	1.93	1.99	110	1.99	1.99	16	1.99
Bnls/Sknl Breast	3.99 - 6.99	1,190	5.05	2.39 - 6.49	259	4.53	1.98 - 6.99	1,015	3.45	1.98 - 3.47	193	2.92	2.99 - 7.99	1,655	4.80	1.49 - 4.99	756	3.33
Breast Tenders	4.49 - 6.99	628	4.94	4.49	955	4.49	6.99	68	6.99	3.19	24	3.19						
Split, bn-in Breast	1.79 - 2.99	307	2.65	1.79 - 1.99	88	1.89												
Whole Wings							1.29 - 2.99	316	1.60							2.29 - 2.99	59	2.80
Leg Quarters	0.69	155	0.69	0.78	67	0.78	1.19	13	1.19									
Legs																		
Thighs	1.29 - 3.49	1,045	2.23	1.49 - 2.98	107	1.87	1.29 - 3.99	707	1.40	0.99 - 1.79	433	1.14	0.99 - 2.77	241	1.27	1.49 - 2.77	57	1.80
Drumsticks	0.99 - 1.89	927	1.32	1.49 - 1.79	81	1.51	1.29 - 2.99	449	1.44	0.99 - 1.79	433	1.14	0.99 - 2.47	477	1.36	1.49	43	1.49
B/S Thighs	3.49 - 3.99	356	3.59	2.98 - 2.99	84	2.98	1.99	78	1.99	1.99 - 2.69	27	2.61	2.99	129	2.99	3.29	682	3.29

SPECIALTY	ALASKA			HAWAII		
Feature Rate <sup>1/</sup>	0.0% of 100 sampled outlets			0.0% of 100 sampled outlets		
Activity Index <sup>2/</sup>	Activity Index = 0			Activity Index = 93		
	price range	stores	wtd avg	price range	stores	wtd avg
Whole Fryer				1.99	3	1.99
Bnls/Sknl Breast				4.14 - 6.87	60	5.51
Breast Tenders						
Split, bn-in Breast						
Whole Wings						
Leg Quarters						
Legs						
Thighs				2.19	30	2.19
Drumsticks						
B/S Thighs						

Specialty products are produced from chickens raised on an all vegetable diet without antibiotics and are minimally processed. USDA Certified Organic are products grown and processed according to USDA's national organic standards and certified by USDA-accredited State and private certification organizations. For more information, visit <http://www.ams.usda.gov/nop/>.

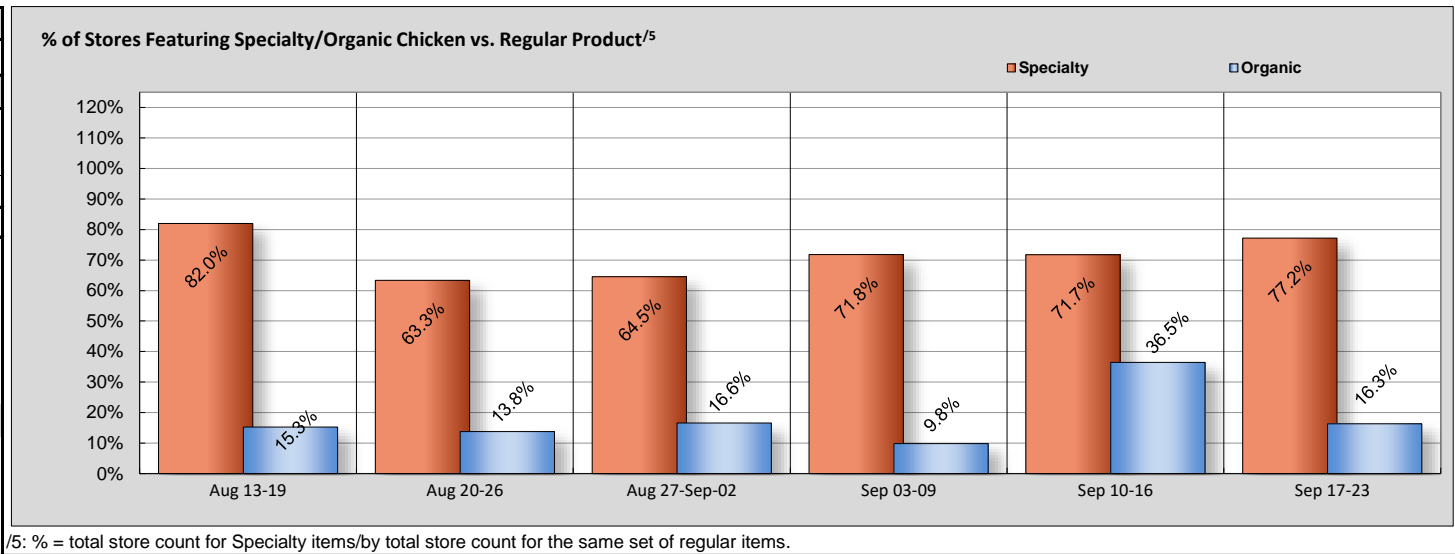


**USDA National Retail Report - Chicken**

**Advertised Prices for Chicken to Consumers at Major Retail Supermarket Outlets during the period of 09/17 thru 09/23.**

(prices in dollars per pound, fresh tray-pack product unless otherwise noted)

NATIONAL SUMMARY						
USDA ORGANIC CHICKEN						
	THIS WEEK		LAST WEEK		LAST YEAR	
Feature Rate <sup>1/</sup>	5.3% of 29,200 outlets		10.9% of 29,200 outlets		5.4% of 29,200 outlets	
Activity Index <sup>2/</sup>	2,801		4,720		2,081	
	Stores	Wtd Avg	Stores	Wtd Avg	Stores	Wtd Avg
Whole Fryer	772	2.95	1,256	3.58	76	3.83
Bnls/Sknls Breast	1,413	7.45	2,608	7.20	596	7.94
Breast Tenders	68	8.99	424	6.99	127	9.99
Split, bn-in Breast						
Whole Wings			24	4.49		
Leg Quarters	--	--	--	--	--	--
Legs						
Thighs	154	4.89	40	4.99	64	5.09
Drumsticks	394	2.95	368	3.02	676	2.58
B/S Thighs					542	5.79



ORGANIC	NORTHEAST U.S.		SOUTHEAST U.S.			MIDWEST U.S.			SOUTH CENTRAL U.S.			SOUTHWEST U.S.			NORTHWEST U.S.				
	18.8% of 5,500 sampled outlets Activity Index = 1,158		3.6% of 7,400 sampled outlets Activity Index = 264			1.2% of 6,100 sampled outlets Activity Index = 913			0.0% of 4,900 sampled outlets Activity Index = 77			3.1% of 3,800 sampled outlets Activity Index = 308			3.0% of 1,300 sampled outlets Activity Index = 39				
Whole Fryer	1.39	3.79	602	2.84	3.79	2	3.79	2.99	3.49	168	3.30								
Bnls/Sknls Breast	6.99	9.99	466	7.86	9.99	44	9.99	5.99	9.99	745	7.04	7.99	77	7.99			5.99	39	5.99
Breast Tenders		8.99	68	8.99															
Split, bn-in Breast																			
Whole Wings																			
Legs																			
Thighs												4.89	154	4.89					
Drumsticks		2.99	22	2.99	2.99	218	2.99					2.89	154	2.89					
B/S Thighs																			
ORGANIC	ALASKA		HAWAII																
	0.0% of 100 sampled outlets Activity Index = 42		28.6% of 100 sampled outlets Activity Index = 90																
Whole Fryer					6.99	30	6.99												
Bnls/Sknls Breast	7.99	7.99	42	7.99	8.19	30	8.19												
Breast Tenders																			
Split, bn-in Breast																			
Whole Wings																			
Legs																			
Thighs																			
Drumsticks																			
B/S Thighs					8.29	30	8.29												

Specialty products are produced from chickens raised on an all vegetable diet without antibiotics and are minimally processed. USDA Certified Organic are products grown and processed according to USDA's national organic standards and certified by USDA-accredited State and private certification organizations. For more information, visit <http://www.ams.usda.gov/nop/>.