



Turkeys Raised

Released August 24, 2001, by the National Agricultural Statistics Service (NASS), Agricultural Statistics Board, U.S. Department of Agriculture. For information on "Turkeys Raised" call John Lange at (202) 720-0585, office hours 7:30 a.m. to 4:00 p.m. ET.

Turkeys Raised Unchanged from 2000

The preliminary estimate of turkeys raised in the United States during 2001 is 270 million, the same as were raised during 2000.

The following six States are expected to account for about two-thirds of the turkeys produced in the United States during 2001:

Minnesota, at 44.0 million birds, is expected to raise the largest number of any state, and shows a 1 percent increase from last year.

North Carolina ranks second with 43.0 million birds, 5 percent more than 2000.

Arkansas is in third place by producing 26.0 million birds, 7 percent less than a year ago.

Missouri and Virginia are tied with each producing 24.0 million birds. Missouri is up 4 percent from a year ago, while Virginia is down 6 percent.

California expects to raise 19.0 million turkeys, 6 percent above a year earlier.

Turkeys: Number Raised by State and United States, 2000-2001 ¹

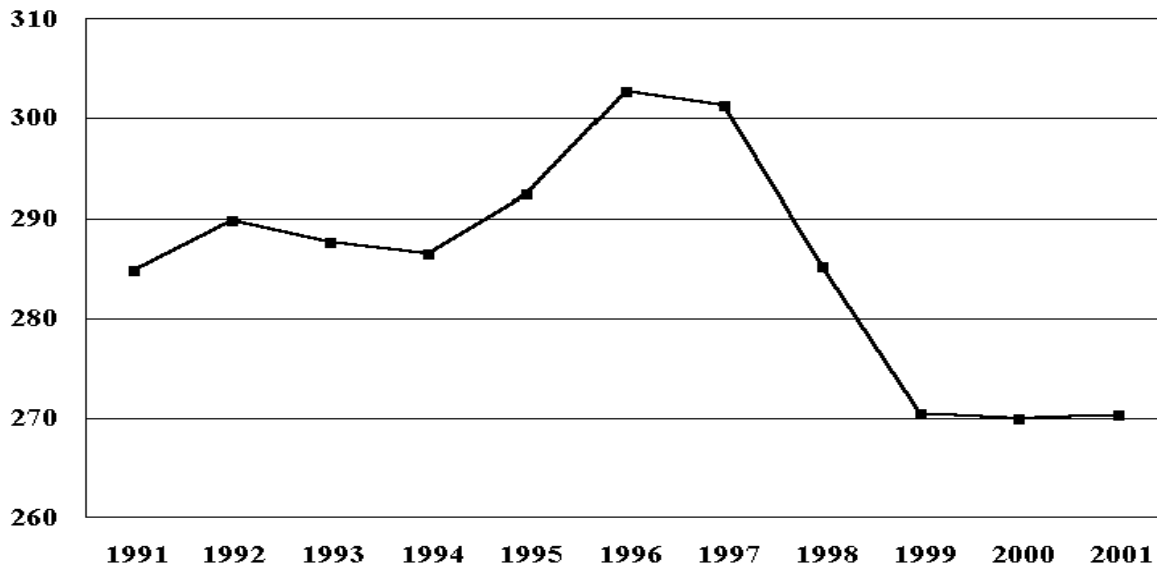
State	Number		2001 as % of 2000
	2000	2001	
	<i>1,000 Head</i>	<i>1,000 Head</i>	<i>Percent</i>
AR	28,000	26,000	93
CA	18,000	19,000	106
CT	5	5	100
DE	4	4	100
IL	2,900	2,600	90
IN	13,500	14,000	104
IA	7,100	7,000	99
MD	440	450	102
MA	79	70	89
MI	3,500	4,500	129
MN	43,500	44,000	101
MO	23,000	24,000	104
NH	14	8	57
NJ	59	46	78
NY	510	500	98
NC	41,000	43,000	105
ND	2,000	1,600	80
OH	4,400	4,600	105
PA	9,300	9,500	102
SC	9,900	9,700	98
SD	4,300	4,500	105
VT	47	44	94
VA	25,500	24,000	94
WV	4,100	4,000	98
Oth Sts ²	28,811	27,311	95
US	269,969	270,438	100

¹ Revised.

² CO, KS, NE, OK, OR, TX, UT, and WI combined to avoid disclosing individual operations.

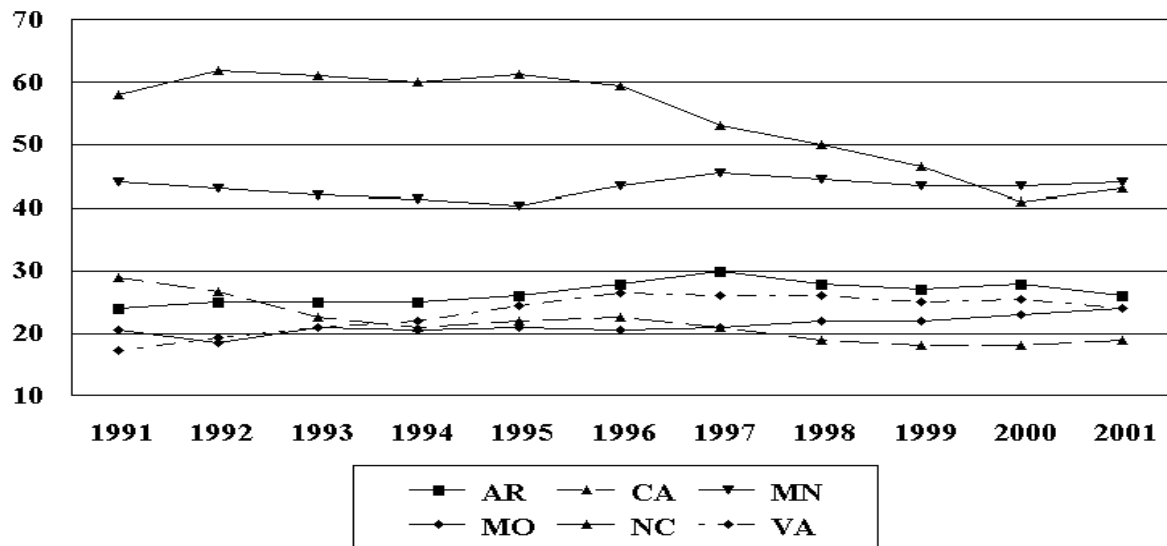
Number of Turkeys Raised United States, 1991-2001

Million Head



Number of Turkeys Raised Major States, 1991-2001

Million Head



Turkeys Raised Estimates

Data Sources: The Turkey Hatchery Survey provides the basis for the preliminary Turkeys Raised estimate published in August. Turkey hatchery estimates are made in 22 States each month and provide the number of eggs in incubators and poults placed in production. Data on poults placed into the United States from Canadian hatcheries are also included in the preliminary estimate.

Estimation Procedures: Turkeys Raised preliminary estimates include young turkeys intended for meat production, as well as breeder turkeys which reached maturity during the calendar year. These estimates exclude turkeys lost to disease or those destroyed. Placement of turkey poults from the monthly "Turkey Hatchery" survey provides the basis for the preliminary estimates published in August. Final estimates, published in January, use indications from the December Growers Survey in addition to updated hatchery data. Other indications for the final estimates are obtained from monthly slaughter totals and check-off data provided by individual State turkey or poultry associations.

Generally, individual State data are not published if there are less than three operations in a State, or if any one operation has 60 percent or more of the total turkeys in the State. These data are combined into the "Other States" category.

Reliability: Turkeys raised preliminary estimates are based on a census of known active hatcheries and, therefore, have no sampling variability. However, estimates may be subject to errors such as omissions, duplication, and mistakes in reporting, recording, and processing of the data. These errors are minimized through strict quality controls in the edit and summarization process, and a careful review of all reported data for consistency and reasonableness.

Revision Policy: Estimates for the previous year are subject to revision when preliminary raised estimates are made in August. Revisions are primarily based on updated hatchery and slaughter data, and at the U.S. level, are usually less than one-half of one percent of the final estimate published in January. Estimates are also reviewed after data from the five-year Census of Agriculture are available. No revisions are made after that date.

The next "Turkeys Raised" report will be released at 3 p.m. ET on January 10, 2002.

The United States Department of Agriculture (USDA) prohibits discrimination in all its programs on the basis of race, color, national origin, gender, religion, age, disability, political beliefs, sexual orientation, and marital or family status. (Not all prohibited bases apply to all programs.) Persons with disabilities who require alternative means for communication of program information (braille, large print, audiotape, etc.) should contact the USDA's TARGET Center at 202-720-2600 (voice and TDD).

To file a complaint of discrimination, write USDA, Director, Office of Civil Rights, Room 326-W, Whitten Building, 1400 Independence Avenue, SW, Washington, D.C., 20250-9410, or call 202-720-5964 (voice or TDD). USDA is an equal opportunity provider and employer.

ACCESS TO REPORTS!!

For your convenience, there are several ways to obtain NASS reports, data products, and services:

INTERNET ACCESS

All NASS reports are available free of charge on the worldwide Internet. For access, connect to the Internet and go to the NASS Home Page at: <http://www.usda.gov/nass/>. Select "Today's Reports" or Publications and then Reports by Calendar or Publications and then Search, by Title or Subject.

E-MAIL SUBSCRIPTION

There are two options for subscribing via e-mail. All NASS reports are available by subscription free of charge direct to your e-mail address. 1) Starting with the NASS Home Page at <http://www.usda.gov/nass/>, click on **Publications**, then click on the **Subscribe by E-mail** button which takes you to the page describing e-mail delivery of reports. Finally, click on **Go to the Subscription Page** and follow the instructions. 2) If you do NOT have Internet access, send an e-mail message to: usda-reports@usda.mannlib.cornell.edu. In the body of the message type the word: **list**.

AUTOFAX ACCESS

NASSFax service is available for some reports from your fax machine. Please call 202-720-2000, using the handset attached to your fax. Respond to the voice prompts. Document 0411 is a list of available reports.

----- PRINTED REPORTS OR DATA PRODUCTS

CALL OUR TOLL-FREE ORDER DESK: 800-999-6779 (U.S. and Canada)
Other areas, please call 703-605-6220 FAX: 703-605-6900
(Visa, MasterCard, check, or money order acceptable for payment.)

ASSISTANCE

For **assistance** with general agricultural statistics or further information about NASS or its products or services, contact the **Agricultural Statistics Hotline** at **800-727-9540**, 7:30 a.m. to 4:00 p.m. ET, or e-mail: nass@nass.usda.gov.