



Turkeys Raised

Released August 22, 2003, by the National Agricultural Statistics Service (NASS), Agricultural Statistics Board, U.S. Department of Agriculture. For information on "*Turkeys Raised*" call John Lange at (202) 720-0585, office hours 7:30 a.m. to 4:00 p.m. ET.

Turkeys Raised Down 1 Percent from 2002

The preliminary estimate of turkeys raised in the United States during 2003 is 269 million, down 1 percent from the number raised during 2002.

The following six States are expected to account for about two-thirds of the turkeys produced in the United States during 2003:

Minnesota, at 45.5 million birds, is expected to raise the largest number of any state, and shows a 3 percent increase from last year.

North Carolina ranks second with 45.0 million birds, down 1 percent from 2002.

Missouri is in third place by producing 27.5 million birds, 8 percent more than a year ago.

Arkansas growers expect to produce 24.0 million birds in 2003, down 19 percent from the previous year.

Virginia, at 23.0 million birds is up 15 percent from 2002.

California expects to raise 16.5 million turkeys, 7 percent less than a year earlier.

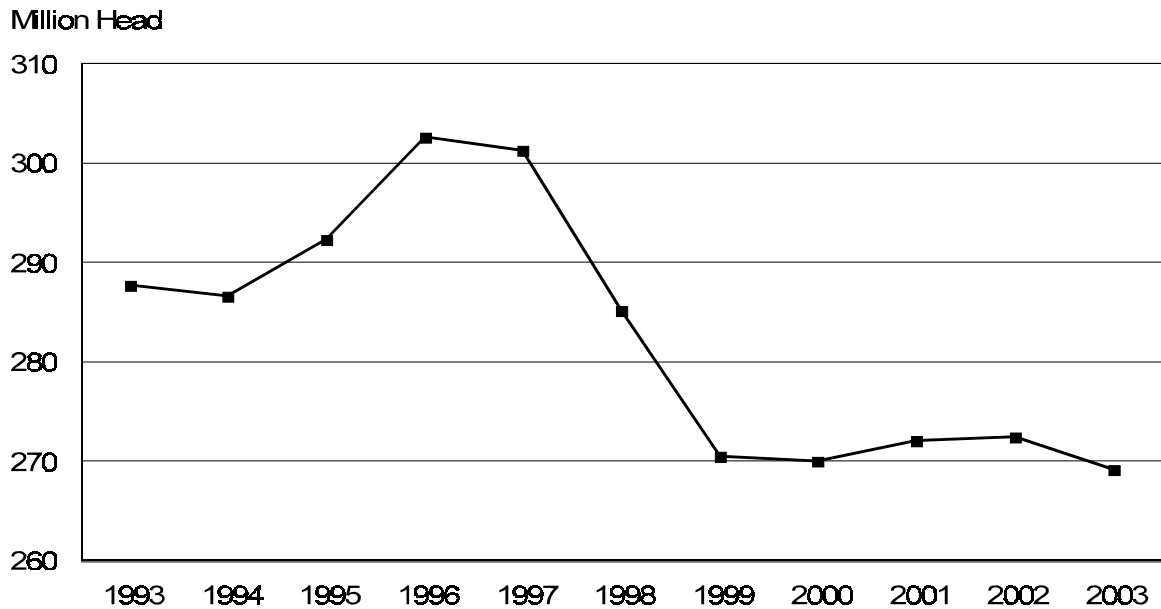
Turkeys: Number Raised by State and United States, 2002-2003 ¹

State	Number		2003 as % of 2002
	2002	2003	
	<i>1,000 Head</i>	<i>1,000 Head</i>	<i>Percent</i>
AR	29,500	24,000	81
CA	17,700	16,500	93
CT	7	7	100
DE ²	3		
IL	2,900	2,900	100
IN	13,000	12,800	98
IA	6,800	6,500	96
MD	435	450	103
MA	68	68	100
MI	4,800	4,800	100
MN	44,000	45,500	103
MO	25,500	27,500	108
NH	5	5	100
NJ	34	37	109
NY	520	570	110
NC	45,500	45,000	99
ND	1,900	1,300	68
OH	5,400	5,300	98
PA	9,900	9,500	96
SC	9,900	9,900	100
SD	4,800	4,900	102
VT	46	50	109
VA	20,000	23,000	115
WV	3,600	4,100	114
Oth Sts ²	26,111	24,513	94
US	272,429	269,200	99

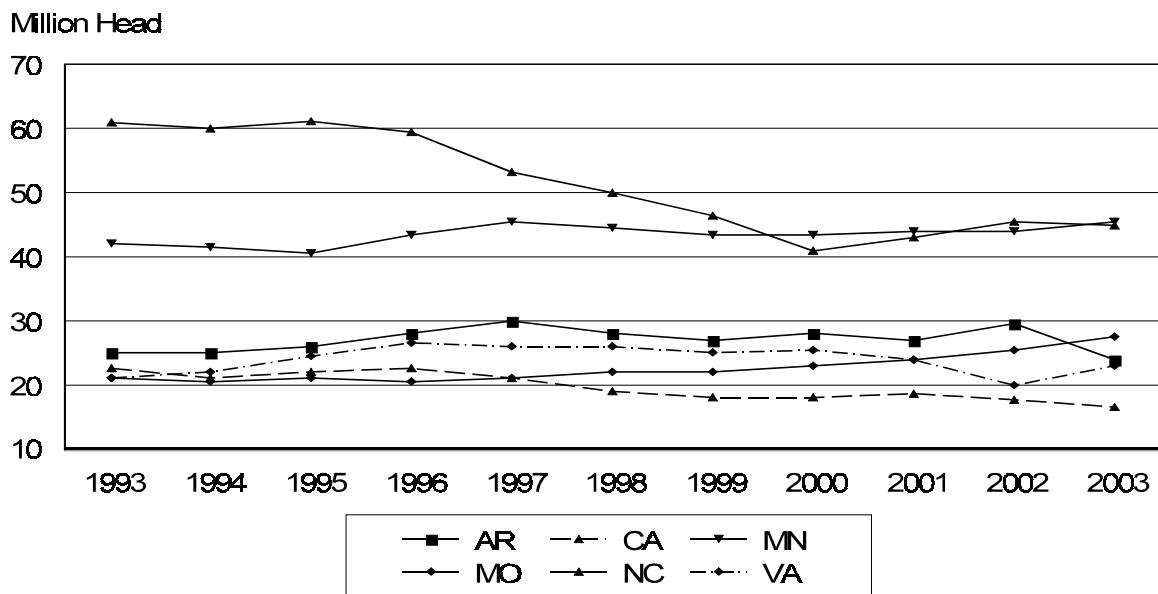
¹ Revised.

² CO, DE (2003), KS, NE, OK, OR, TX, UT, and WI combined to avoid disclosing individual operations.

Number of Turkeys Raised United States, 1993-2003



Number of Turkeys Raised Major States, 1993-2003



Turkeys Raised Estimates

Data Sources: The Turkey Hatchery Survey provides the basis for the preliminary Turkeys Raised estimate published in August. Turkey hatchery estimates are made in 20 States each month and provide the number of eggs in incubators and poults placed in production. Data on poults placed into the United States from Canadian hatcheries are also included in the preliminary estimate.

Estimation Procedures: Turkeys Raised preliminary estimates include young turkeys intended for meat production, as well as breeder turkeys which reached maturity during the calendar year. These estimates exclude turkeys lost to disease or those destroyed. Placement of turkey poults from the monthly "Turkey Hatchery" survey provides the basis for the preliminary estimates published in August. Final estimates, published in January, use indications from the December Growers Survey in addition to updated hatchery data. Other indications for the final estimates are obtained from monthly slaughter totals and check-off data provided by individual State turkey or poultry associations.

Generally, individual State data are not published if there are less than three operations in a State, or if any one operation has 60 percent or more of the total turkeys in the State. These data are combined into the "Other States" category.

Reliability: Turkeys raised preliminary estimates are based on a census of known active hatcheries and, therefore, have no sampling variability. However, estimates may be subject to errors such as omissions, duplication, and mistakes in reporting, recording, and processing of the data. These errors are minimized through strict quality controls in the edit and summarization process, and a careful review of all reported data for consistency and reasonableness.

Revision Policy: Estimates for the previous year are subject to revision when preliminary raised estimates are made in August. Revisions are primarily based on updated hatchery and slaughter data, and at the U.S. level, are usually less than one-half of one percent of the final estimate published in January. Estimates are also reviewed after data from the five-year Census of Agriculture are available. No revisions are made after that date.

The next "*Turkeys Raised*" report will be released in January 2004.

The United States Department of Agriculture (USDA) prohibits discrimination in all its programs on the basis of race, color, national origin, gender, religion, age, disability, political beliefs, sexual orientation, and marital or family status. (Not all prohibited bases apply to all programs.) Persons with disabilities who require alternative means for communication of program information (braille, large print, audiotape, etc.) should contact the USDA's TARGET Center at 202-720-2600 (voice and TDD).

To file a complaint of discrimination, write USDA, Director, Office of Civil Rights, Room 326-W, Whitten Building, 1400 Independence Avenue, SW, Washington, D.C., 20250-9410, or call 202-720-5964 (voice or TDD). USDA is an equal opportunity provider and employer.

ACCESS TO REPORTS!!

For your convenience, there are several ways to obtain NASS reports, data products, and services:

INTERNET ACCESS

All NASS reports are available free of charge on the worldwide Internet. For access, connect to the Internet and go to the NASS Home Page at: <http://www.usda.gov/nass/>. Select "Today's Reports" or Publications and then Reports Calendar or Publications and then Search, by Title or Subject.

E-MAIL SUBSCRIPTION

All NASS reports are available by subscription free of charge direct to your e-mail address. Starting with the NASS Home Page at <http://www.usda.gov/nass/>, click on **Publications**, then click on the **Subscribe by E-mail** button which takes you to the page describing e-mail delivery of reports. Finally, click on **Go to the Subscription Page** and follow the instructions.

AUTOFAX ACCESS

NASSFax service is available for some reports from your fax machine. Please call 202-720-2000, using the handset attached to your fax. Respond to the voice prompts. Document 0411 is a list of available reports.

PRINTED REPORTS OR DATA PRODUCTS

CALL OUR TOLL-FREE ORDER DESK: 800-999-6779 (U.S. and Canada)
Other areas, please call 703-605-6220 FAX: 703-605-6900
(Visa, MasterCard, check, or money order acceptable for payment.)

ASSISTANCE

For **assistance** with general agricultural statistics or further information about NASS or its products or services, contact the **Agricultural Statistics Hotline** at **800-727-9540**, 7:30 a.m. to 4:00 p.m. ET, or e-mail: nass@nass.usda.gov.
