



Turkeys Raised

Released August 24, 2005, by the National Agricultural Statistics Service (NASS), Agricultural Statistics Board, U.S. Department of Agriculture. For information on *Turkeys Raised* call John Lange at (202) 720-0585, office hours 7:30 a.m. to 4:00 p.m. ET.

Turkeys Raised Down 3 Percent from 2004

The preliminary estimate of turkeys raised in the United States during 2005 is 256 million, down 3 percent from the number raised during 2004.

The following six States are expected to account for about two-thirds of the turkeys produced in the United States during 2005:

Minnesota, at 44.5 million birds, is expected to raise the largest number of any state, showing a 2 percent decrease from last year.

North Carolina ranks second with 36.0 million birds, down 8 percent from 2004.

Arkansas is in third place by producing 29.0 million birds, 2 percent more than a year ago.

Virginia, at 21.0 million birds is up 7 percent from 2004.

Missouri growers expect to produce 20.5 million birds in 2005, down 5 percent from the previous year.

California expects to raise 15.1 million turkeys, 4 percent less than a year earlier.

Turkeys: Number Raised by State and United States, 2004-2005 ¹

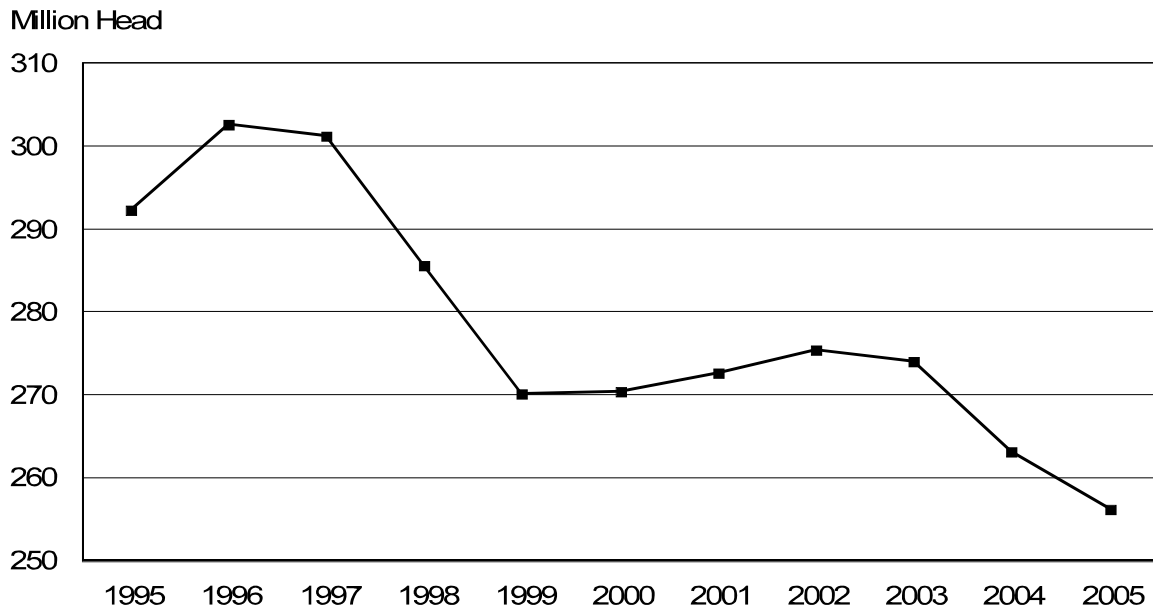
State	Number		2005 as % of 2004
	2004	2005	
	<i>1,000 Head</i>	<i>1,000 Head</i>	<i>Percent</i>
AR	28,500	29,000	102
CA	15,700	15,100	96
CT ²	5		
IL	2,900	2,900	100
IN	13,300	13,600	102
IA	9,000	9,800	109
MD	750	770	103
MA	70	68	97
MI	5,000	4,900	98
MN	45,500	44,500	98
MO	21,500	20,500	95
NH ²	4		
NJ	37	33	89
NY	580	630	109
NC	39,000	36,000	92
ND	1,000	1,100	110
OH	5,800	5,600	97
PA	12,000	10,800	90
SC	12,000	9,100	76
SD	4,500	4,500	100
VT	52	46	88
VA	19,700	21,000	107
WV	3,200	2,400	75
Oth Sts ³	23,109	23,900	103
US	263,207	256,247	97

¹ Revised.

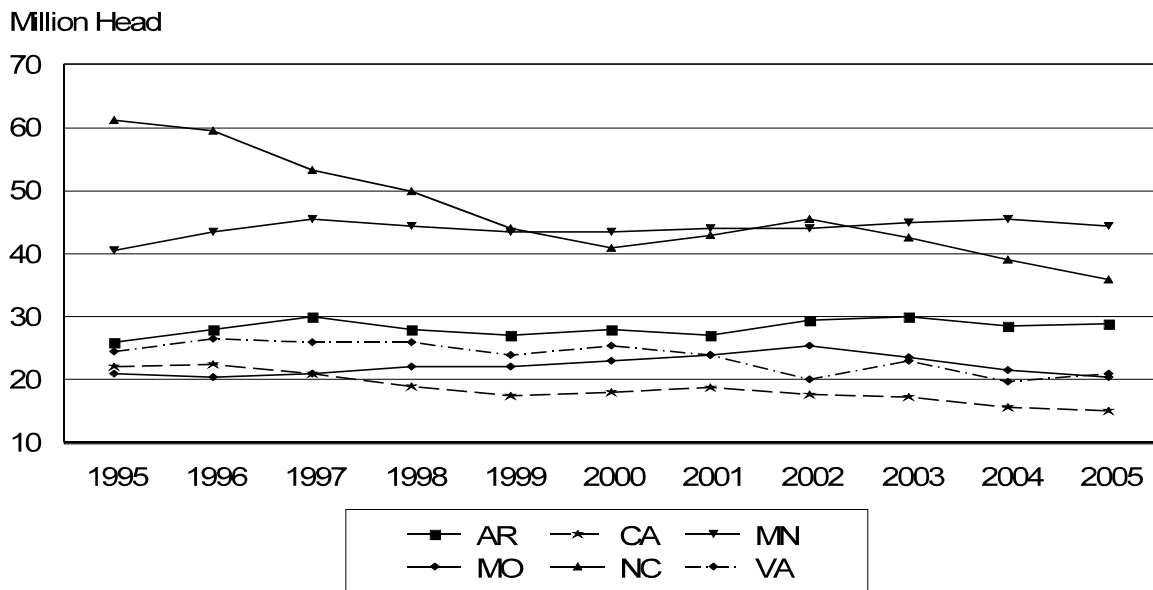
² Estimates for CT, DE, NH, and OR discontinued starting in 2005.

³ CO, DE (2004), KS, NE, OK, OR (2004), TX, UT, and WI combined to avoid disclosing individual operations.

Number of Turkeys Raised United States, 1995-2005



Number of Turkeys Raised Major States, 1995-2005



Turkeys Raised Estimates

Data Sources: The Turkey Hatchery Survey provides the basis for the preliminary Turkeys Raised estimate published in August. Turkey hatchery estimates are made in 18 States each month and provide the number of eggs in incubators and poults placed in production. Data on poults placed into the United States from Canadian hatcheries are also included in the preliminary estimate.

Estimation Procedures: Turkeys Raised preliminary estimates include young turkeys intended for meat production, as well as breeder turkeys which reach maturity during the calendar year. These estimates exclude turkeys lost to disease or those destroyed. Placement of turkey poults from the monthly "Turkey Hatchery" survey provides the basis for the preliminary estimates published in August. Final estimates, published in January, use indications from the December Growers Survey in addition to updated hatchery data. Other indications for the final estimates are obtained from monthly slaughter totals and check-off data provided by individual State turkey or poultry associations.

Generally, individual State data are not published if there are less than three operations in a State, or if any one operation has 60 percent or more of the total turkeys in the State. These data are combined into the "Other States" category.

Reliability: Turkeys raised preliminary estimates are based on a census of known active hatcheries and, therefore, have no sampling variability. However, estimates may be subject to errors such as omissions, duplication, and mistakes in reporting, recording, and processing of the data. These errors are minimized through strict quality controls in the edit and summarization process, and a careful review of all reported data for consistency and reasonableness.

Revision Policy: Estimates for the previous year are subject to revision when preliminary raised estimates are made in August. Revisions are primarily based on updated hatchery and slaughter data, and at the U.S. level, are usually less than one-half of one percent of the final estimate published in January. Estimates are also reviewed after data from the five-year Census of Agriculture are available. No revisions are made after that date.

ACCESS TO REPORTS!!

For your convenience, there are several ways to obtain NASS reports, data products, and services:

INTERNET ACCESS

All NASS reports are available free of charge on the worldwide Internet. For access, connect to the Internet and go to the NASS Home Page at: **www.usda.gov/nass/**. Select "Today's Reports" or Publications and then Reports Calendar or Publications and then Search, by Title or Subject.

E-MAIL SUBSCRIPTION

All NASS reports are available by subscription free of charge direct to your e-mail address. Starting with the NASS Home Page at **www.usda.gov/nass/**, click on **Publications**, then click on the **Subscribe by E-mail** button which takes you to the page describing e-mail delivery of reports. Finally, click on **Go to the Subscription Page** and follow the instructions.

PRINTED REPORTS OR DATA PRODUCTS

CALL OUR TOLL-FREE ORDER DESK: 800-999-6779 (U.S. and Canada)
Other areas, please call 703-605-6220 FAX: 703-605-6900
(Visa, MasterCard, check, or money order acceptable for payment.)

ASSISTANCE

For **assistance** with general agricultural statistics or further information about NASS or its products or services, contact the **Agricultural Statistics Hotline** at **800-727-9540**, 7:30 a.m. to 4:00 p.m. ET, or e-mail: **nass@nass.usda.gov**.

The U.S. Department of Agriculture (USDA) prohibits discrimination in all its programs and activities on the basis of race, color, national origin, age, disability, and where applicable, sex, marital status, familial status, parental status, religion, sexual orientation, genetic information, political beliefs, reprisal, or because all or part of an individual's income is derived from any public assistance program. (Not all prohibited bases apply to all programs.) Persons with disabilities who require alternative means for communication of program information (Braille, large print, audiotope, etc.) should contact USDA's TARGET Center at (202) 720-2600 (voice and TDD).

To file a complaint of discrimination, write to USDA, Director, Office of Civil Rights, 1400 Independence Avenue, S.W., Washington, D.C. 20250-9410, or call (800) 795-3272 (voice) or (202) 720-6382 (TDD). USDA is an equal opportunity provider and employer.