



ISSN: 1949-1549

Released July 24, 2014, by the National Agricultural Statistics Service (NASS), Agricultural Statistics Board, United States Department of Agriculture (USDA).

Pelt Production at 3.54 Million Pelts in 2013

Mink pelt production in the United States in 2013 totaled 3.54 million pelts. Wisconsin, the largest mink producing State, produced 1,129,960 pelts. Utah, the second largest producing State, produced 855,380 pelts.

The number of pelts by color class as a percent of the total United States production in 2013 is as follows: Black at 51 percent, Mahogany at 24 percent, and Blue Iris at 8 percent. The remaining color classes accounted for 17 percent.

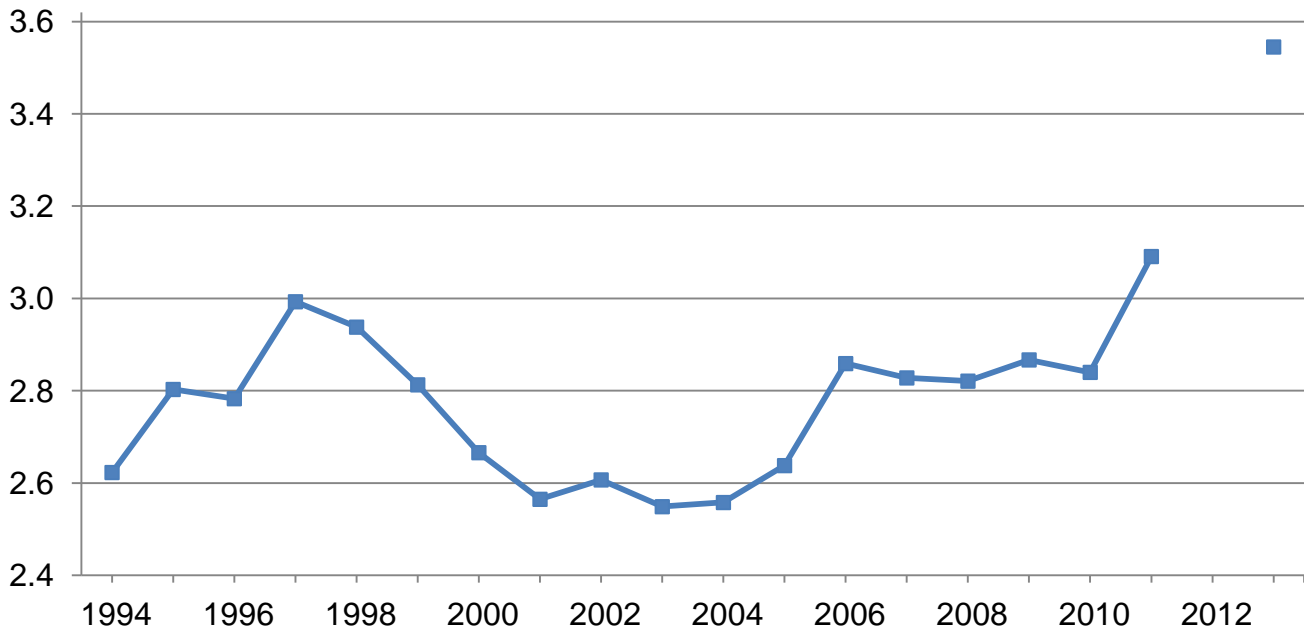
Value of pelts produced during the 2013 crop year was \$200 million. The average price per pelt for the 2013 crop year was \$56.30.

Female mink bred to produce kits in 2014 totaled 851,530.

Percent of total females bred to produce kits in 2014 by color class is as follows: Black at 51 percent, Mahogany at 24 percent, and Blue Iris at 7 percent. The remaining color classes accounted for 18 percent.

Mink Pelts Produced – United States

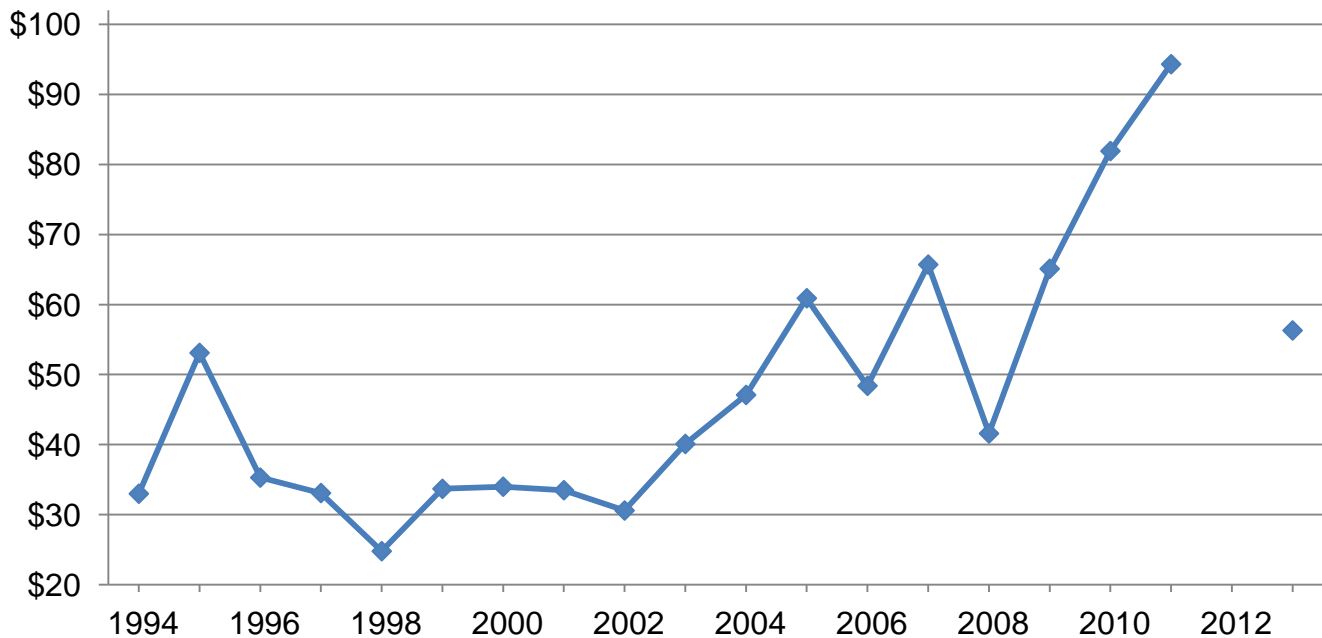
Million



Due to sequestration the *Mink* report was suspended in 2012.

Mink Average Price Per Pelt – United States

Dollars



Due to sequestration the *Mink* report was suspended in 2012.

Mink Pelts Produced and Females Bred by Color Class – United States: 2013-2014

Color class	Pelts produced	Females bred to produce kits
	2013	2014
	(number)	(number)
Black	1,794,900	431,350
Demi/Wild	93,230	19,430
Pastel	111,700	26,310
Sapphire	105,100	29,480
Blue Iris	265,300	63,210
Mahogany	866,620	205,240
Pearl	101,480	18,250
Lavender	13,600	4,610
Violet	38,260	9,910
White	132,750	39,040
Other	21,670	4,700
Total	3,544,610	851,530

Mink Pelts Produced, Average Price, and Value – United States: 1994-2013

Year	Pelts produced	Average marketing price	Value of mink pelts
	(number)	(dollars)	(dollars)
1994	2,623,200	33.00	86,565,600
1995	2,803,100	53.10	148,844,610
1996	2,783,200	35.30	98,246,960
1997	2,993,300	33.10	99,078,230
1998	2,938,100	24.80	72,864,880
1999	2,812,500	33.70	94,781,250
2000	2,666,100	34.00	90,647,400
2001	2,565,300	33.50	85,937,550
2002	2,607,300	30.60	79,783,380
2003	2,549,000	40.10	102,214,900
2004	2,558,100	47.10	120,486,510
2005	2,637,800	60.90	160,642,020
2006	2,858,800	48.40	138,365,920
2007	2,828,200	65.70	185,812,740
2008	2,820,700	41.60	117,341,120
2009	2,866,700	65.10	186,622,170
2010	2,840,200	81.90	232,612,380
2011	3,091,470	94.30	291,525,621
2012 ¹	(NA)	(NA)	(NA)
2013	3,544,610	56.30	199,561,543

(NA) Not available.

¹ Due to sequestration the *Mink* report was suspended.

Pelts Produced by Color Class – Selected States and United States: 2013

States	Black (number)	Demi/Wild (number)	Pastel (number)	Sapphire (number)	Blue Iris (number)	Mahogany (number)
Idaho	143,000	7,000	3,200	12,500	3,300	164,000
Illinois	63,000	-	-	(D)	-	(D)
Iowa	67,000	(D)	(D)	(D)	(D)	36,000
Michigan	39,000	-	(D)	(D)	(D)	2,700
Minnesota	71,000	29,000	(D)	(D)	34,000	86,000
Montana	4,200	(D)	(D)	-	(D)	(D)
Ohio	66,000	(D)	-	(D)	(D)	30,000
Oregon	197,000	(D)	-	(D)	76,000	(D)
Pennsylvania	33,000	(D)	11,000	6,500	18,500	(D)
South Dakota	(D)	(D)	(D)	-	-	(D)
Utah	295,000	31,000	(D)	35,000	2,300	365,000
Washington	67,000	-	(D)	-	(D)	(D)
Wisconsin	730,000	(D)	27,000	37,000	108,000	101,000
Other States ¹	19,700	26,230	70,500	14,100	23,200	81,920
United States	1,794,900	93,230	111,700	105,100	265,300	866,620
States	Pearl (number)	Lavender (number)	Violet (number)	White (number)	Other (number)	Total ² (number)
Idaho	-	(D)	760	-	(D)	345,590
Illinois	(D)	-	-	(D)	-	97,180
Iowa	-	-	-	(D)	-	109,640
Michigan	-	-	(D)	6,000	-	56,500
Minnesota	-	-	-	(D)	-	244,520
Montana	-	-	-	(D)	-	18,330
Ohio	-	-	-	(D)	-	104,900
Oregon	-	-	(D)	-	-	309,350
Pennsylvania	(D)	(D)	(D)	(D)	(D)	79,530
South Dakota	(D)	-	-	-	-	(D)
Utah	(D)	(D)	(D)	(D)	(D)	855,380
Washington	-	-	-	-	-	95,000
Wisconsin	(D)	11,500	(D)	93,000	7,500	1,129,960
Other States ¹	101,480	2,100	37,500	33,750	14,170	98,730
United States	101,480	13,600	38,260	132,750	21,670	3,544,610

- Represents zero.

(D) Withheld to avoid disclosing data for individual operations.

¹ Other States also includes some pelts from the above listed States that were not published to avoid disclosing individual operations.

² Published color classes may not add to the State total to avoid disclosing individual operations.

Female Mink Bred to Produce Kits by Color Class – Selected States and United States: 2014

States	Black (number)	Demi/Wild (number)	Pastel (number)	Sapphire (number)	Blue Iris (number)	Mahogany (number)
Idaho	35,000	1,700	1,100	4,100	(D)	40,000
Illinois	19,500	-	-	(D)	-	(D)
Iowa	18,500	(D)	(D)	(D)	(D)	11,000
Michigan	12,000	-	(D)	(D)	(D)	1,100
Minnesota	17,000	6,000	(D)	(D)	8,500	24,000
Montana	1,600	(D)	(D)	-	(D)	2,700
Ohio	15,000	(D)	-	(D)	(D)	7,000
Oregon	42,000	(D)	-	2,700	16,000	(D)
Pennsylvania	7,000	(D)	1,900	2,400	4,700	(D)
South Dakota	(D)	(D)	(D)	-	-	(D)
Utah	77,000	(D)	(D)	9,000	750	80,000
Washington	17,500	-	(D)	-	(D)	(D)
Wisconsin	168,000	290	7,000	10,000	27,000	27,000
Other States ¹	1,250	11,440	16,310	1,280	6,260	12,440
United States	431,350	19,430	26,310	29,480	63,210	205,240

States	Pearl (number)	Lavender (number)	Violet (number)	White (number)	Other (number)	Total ² (number)
Idaho	-	(D)	(D)	-	(D)	85,660
Illinois	(D)	-	-	(D)	-	27,590
Iowa	-	-	-	(D)	-	31,290
Michigan	-	-	(D)	1,700	-	17,500
Minnesota	-	-	-	3,500	-	62,910
Montana	-	-	-	(D)	-	6,410
Ohio	-	-	-	(D)	-	24,260
Oregon	-	-	(D)	-	-	67,900
Pennsylvania	(D)	(D)	(D)	(D)	(D)	18,700
South Dakota	(D)	-	-	-	-	(D)
Utah	(D)	(D)	(D)	230	(D)	200,680
Washington	-	-	-	-	-	23,900
Wisconsin	-	3,700	(D)	28,000	2,000	276,990
Other States ¹	18,250	910	9,910	5,610	2,700	7,740
United States	18,250	4,610	9,910	39,040	4,700	851,530

- Represents zero.

(D) Withheld to avoid disclosing data for individual operations.

¹ Other States also includes some females bred from the above listed States that were not published to avoid disclosing individual operations.

² Published color classes may not add to the State total to avoid disclosing individual operations.

Statistical Methodology

Survey Procedures: Mink production data are collected from early May through late May from all known producers. Individual NASS Field Offices maintain a list of all known mink producers and use known sources of producers to update their lists. All known mink producers are mailed a questionnaire and given adequate time to respond by mail. Those who do not respond by mail are telephoned or enumerated in person. Care is exercised to account for all operations. Major auction houses, which handle producer sales, provide mink pelt price data in June. Prices are collected at the point of first sale, before marketing costs are deducted.

Estimation Procedures: All data are analyzed for unusual values. Data from each operation are compared to their own past operating profile and to trends from similar operations. Data for missing operations are estimated based on similar operations or historical data. Field offices prepare these estimates by using a combination of survey indications and historic trends. Individual State estimates are reviewed by the Agricultural Statistics Board for reasonableness.

Revision Policy: Revisions to previous estimates are made to improve year-to-year and item-to-item relationships. Estimates for the previous year are subject to revision when current estimates are made. Estimates will also be reviewed after data from the five-year Census of Agriculture are available. No revisions will be made after that date.

Reliability: Mink production estimates are based on a census of all known active producers and therefore, have no sampling variability. However, estimates are subject to errors such as omissions, duplication, mistakes in reporting, recording, and processing data. While these errors cannot be measured directly, they are minimized through strict quality control in the data collection process and a careful review of all reported data for consistency and reasonableness.

To assist in evaluating the reliability of the estimates in this report, the “Root Mean Square Error” is shown for selected items in the following table. The “Root Mean Square Error” is a statistical measure based on past performance and is computed using the differences between first and final estimates. The “Root Mean Square Error” for mink pelts produced over the past 10 years is 0.5 percent. This means that chances are 2 out of 3 that the final estimate will not be above or below the current estimate of 3.54 million pelts by more than 0.5 percent. Chances are 9 out of 10 that the difference will not exceed 0.9 percent.

Reliability of Mink Estimates

[Based on data for the past ten years]

Item	Root mean square error	90 percent confidence level	Difference between first and latest estimate				
			Average	Smallest	Largest	Years	
						Below latest	Above latest
	(percent)	(percent)	(1,000)	(1,000)	(1,000)	(number)	(number)
Pelts produced	0.5	0.9	9	0	34	7	1
Females bred	0.9	1.7	4	0	15	7	1

Information Contacts

Listed below are the commodity specialists in the Livestock Branch of the National Agricultural Statistics Service to contact for additional information. E-mail inquiries may be sent to nass@nass.usda.gov

Dan Kerestes, Chief, Livestock Branch	(202) 720-3570
Bruce Boess, Head, Poultry and Specialty Commodities Section	(202) 720-4447
Alissa Cowell-Mytar – Cold Storage	(202) 720-4751
Heidi Gleich – Census of Aquaculture, Mink, Trout Production	(202) 720-0585
Dawn Keen – Egg Products	(202) 720-4448
Michael Klamm – Poultry Slaughter, Turkey Hatchery, Turkeys Raised	(202) 690-3237
Kim Linonis – Layers, Eggs	(202) 690-8632
Joshua O’Rear – Catfish Production, Honey	(202) 690-3676
Miste Salmon – Broiler Hatchery, Chicken Hatchery	(202) 720-3244

Access to NASS Reports

For your convenience, you may access NASS reports and products the following ways:

- All reports are available electronically, at no cost, on the NASS web site: <http://www.nass.usda.gov>
- Both national and state specific reports are available via a free e-mail subscription. To set-up this free subscription, visit <http://www.nass.usda.gov> and in the “Follow NASS” box under “Receive reports by Email,” click on “National” or “State” to select the reports you would like to receive.

For more information on NASS surveys and reports, call the NASS Agricultural Statistics Hotline at (800) 727-9540, 7:30 a.m. to 4:00 p.m. ET, or e-mail: nass@nass.usda.gov.

The U.S. Department of Agriculture (USDA) prohibits discrimination against its customers, employees, and applicants for employment on the bases of race, color, national origin, age, disability, sex, gender identity, religion, reprisal, and where applicable, political beliefs, marital status, familial or parental status, sexual orientation, or all or part of an individual's income is derived from any public assistance program, or protected genetic information in employment or in any program or activity conducted or funded by the Department. (Not all prohibited bases will apply to all programs and/or employment activities.)

If you wish to file a Civil Rights program complaint of discrimination, complete the [USDA Program Discrimination Complaint Form](#) (PDF), found online at http://www.ascr.usda.gov/complaint_filing_cust.html, or at any USDA office, or call (866) 632-9992 to request the form. You may also write a letter containing all of the information requested in the form. Send your completed complaint form or letter to us by mail at U.S. Department of Agriculture, Director, Office of Adjudication, 1400 Independence Avenue, S.W., Washington, D.C. 20250-9410, by fax (202) 690-7442 or email at program.intake@usda.gov.