

WYOMING WEEKLY SUMMARY

Recap For Week Ending

April 16, 2021

Receipts: This Week: 5,248 Week Ago: 6,999 Year Ago: 2,208

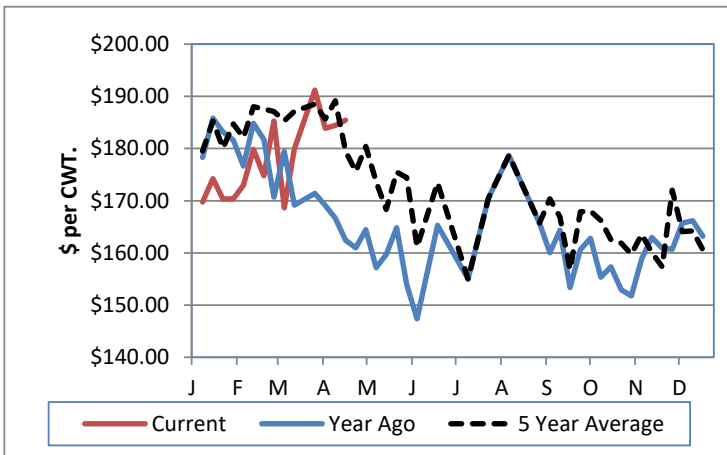
Compared to last week, steers under 500 lbs sold 10.00 lower, 500 to 700 lbs sold 1.00 to 2.00 higher, 700 to 800 lbs sold 4.00 lower and over 800 lbs sold steady. Flyweight heifers sold 2.00 higher with all other weight trading 1.00 to 4.00 lower. Medium and fleshy cows sold 1.00 to 4.00 lower with lean cows 7.00 to 8.00 lower. Slaughter bull sold 4.00 lower. Bred cows sold steady. Few, more pairs showing up at the auctions this week. Most of the state is still very dry but there have been some snow accumulations in the last week that will help the grass green up.

Wyoming Weekly Feeder Cattle Averages

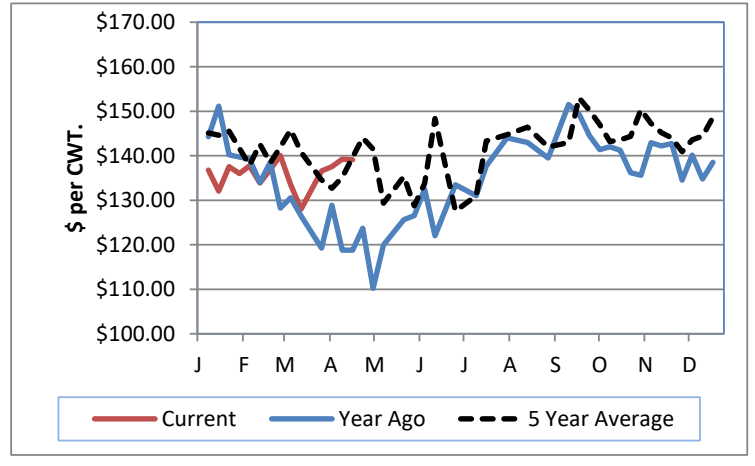
Combined Wyoming Auctions including Torrington and Riverton

Feeder Steers				Feeder Heifers			
M&L 1	This Week	Last Week	Last Year	M&L 1	This Week	Last Week	Last Year
300-400 lbs	\$199.00	\$204.86	#N/A	300-400 lbs	\$181.62	\$179.89	#N/A
400-500 lbs	\$187.23	\$199.19	\$180.63	400-500 lbs	\$170.01	\$173.55	\$146.99
500-600 lbs	\$185.41	\$184.45	\$162.39	500-600 lbs	\$157.29	\$163.52	\$144.32
600-700 lbs	\$173.86	\$171.35	\$147.93	600-700 lbs	\$148.60	\$152.98	\$132.35
700-800 lbs	\$149.02	\$154.84	\$134.03	700-800 lbs	\$134.88	\$135.25	\$118.35
800-900 lbs	\$139.12	\$139.24	\$118.77	800-900 lbs	\$131.72	\$133.14	\$106.91
900-1000 lbs	#N/A	\$124.63	\$111.50	900-1000 lbs	#N/A	\$120.00	#N/A

Weekly M&L 1 500-600 lb. Feeder Steer Price



Weekly M&L 1 800-900 lb. Feeder Steer Price



Weekly Hay Report All sales dollars per ton

	<u>Wyoming</u>	<u>Western NE</u>
Alfalfa		
Supreme		
Premium	210.00-225.00	
Good	150.00-180.00	
Fair		
Ground & Del		173.00
Alfalfa/Grass		
Premium	225.00	

Valley Video Internet Hay Auction 1/28/2021

ALFALFA	4X4	3X4	Large Rounds
Prem/Supreme	191.00-235.00	181.00-227.00	
Good	185.00-196.00	177.00-194.00	174.00-201.00
Fair		180.00	

Wyoming Auction Slaughter Cow and Bull Prices

	% Lean	TLCC	RLA	Year Ago Average
Breakers	75-80	67.50-68.00	56.50-60.50	54.74
Boners	80-85	64.50-70.00	57.00-63.00	57.06
Lean	85-90	53.50-61.00	58.00-63.50	52.54
Bulls	YG 1-2	88.00-96.00	81.00-88.00	84.55

Wyoming Auction Bred Cow(per hd)/Pair Prices (per pair)

	<u>Bred Cows</u>	<u>Cow/Calf Pairs</u>
Heifers	1275.00-1575.00	
Young	1200.00-1800.00	1400.00-1800.00
Middle Aged	1275.00-1600.00	1375.00-1500.00
Aged Short Solid	925.00-1200.00	1025.00-1285.00
Aged Short Term	825.00-885.00	

WY and Western NE Grain Prices Daily Grain Report

		<u>Wyoming</u>	<u>Western NE</u>
Wheat	(bu)	5.19-5.49	5.13-5.69
Corn	(bu)	5.61-5.86	5.51-6.14
Soybeans	(bu)		12.72-13.45
Millet	(cwt)		33.00
Sunflowers	(cwt)		22.50

USDA Livestock, Poultry and Grain Market News

Wyoming
Thomas Walthers, OIC
Thomas.Walthers@usda.gov 308-390-5399
www.ams.usda.gov/lmarketnews