

**WYOMING WEEKLY SUMMARY**

**Recap For Week Ending**

**October 15, 2021**

**Receipts:** This Week: 11,635      Week Ago: 14,168      Year Ago: 15,620

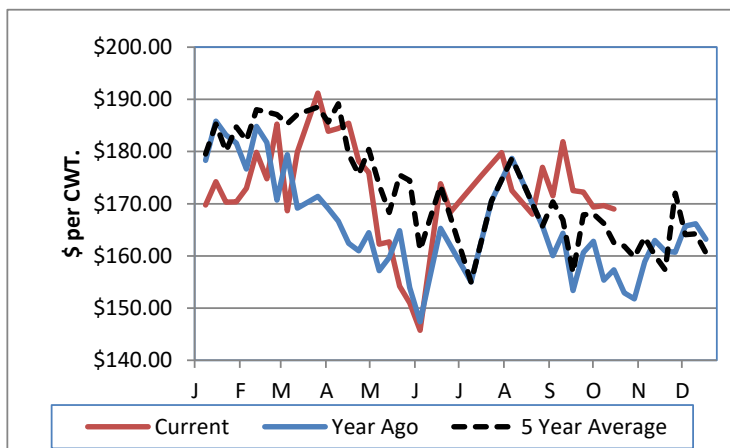
Compared to last week steer calves under 600 lbs sold steady to 2.00 higher and over 600 lbs sold 3.00 to 6.00 lower. Yearling steers sold mostly steady. Heifer calves under 500 sold 2.00 to 5.00 higher and over 500 lbs sold 2.00 to 5.00 lower with yearling heifers trading steady to 2.00 lower. Lean slaughter cows sold steady with boning and breaker cows trading 3.00 higher. Slaughter bulls sold 5.00 higher. Demand was moderate to good for all offerings.

Wyoming Weekly Feeder Cattle Averages

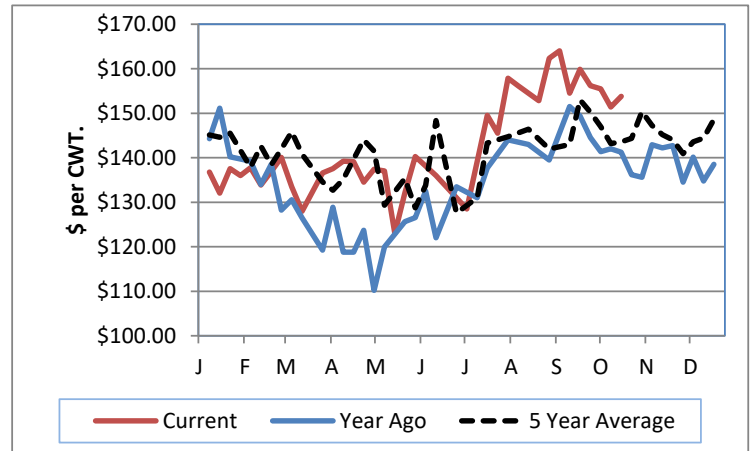
**Combined Wyoming Auctions including Torrington and Riverton**

<u>Feeder Steers</u>				<u>Feeder Heifers</u>			
M&L 1	This Week	Last Week	Last Year	M&L 1	This Week	Last Week	Last Year
300-400 lbs	\$219.08	\$211.47	\$195.87	300-400 lbs	\$182.78	\$181.59	\$162.86
400-500 lbs	\$190.61	\$189.67	\$175.31	400-500 lbs	\$162.97	\$163.00	\$146.87
500-600 lbs	\$168.95	\$169.63	\$157.34	500-600 lbs	\$148.84	\$153.02	\$136.19
600-700 lbs	\$162.85	\$167.93	\$146.86	600-700 lbs	\$149.13	\$150.86	\$136.94
700-800 lbs	\$161.67	\$148.82	\$145.80	700-800 lbs	\$149.53	\$150.35	\$138.80
800-900 lbs	\$153.77	\$151.40	\$141.27	800-900 lbs	\$146.50	\$147.34	\$135.70
900-1000 lbs	\$144.68	\$149.64	\$140.79	900-1000 lbs	\$135.59	\$139.52	\$118.81

**Weekly M&L 1 500-600 lb. Feeder Steer Price**



**Weekly M&L 1 800-900 lb. Feeder Steer Price**



**Weekly Hay Report**

All sales dollars per ton

<u>Alfalfa</u>	<u>Wyoming</u>	<u>Western NE</u>
Sup/Premium	230.00-280.00	230.00-245.00
Good	200.00-220.00	200.00-210.00
Sun-Cur Pellets	315.00	
Cubes	300.00-320.00	
Ground & Del		225.00

Alfalfa/Grass

Premium 250.00

Valley Video Internet Hay Auction

7/1/2021

<u>ALFALFA</u>	4X4	3X4	<u>Large Rounds</u>
Prem/Supreme		207.00-221.00	
Good	202.00-211.00	203.00-210.00	160.00
Fair	195.00	190.00-208.00	190.00-195.00

**Wyoming Auction Slaughter Cow and Bull Prices**

	% Lean	<u>TLCC</u>	<u>RLA</u>	<u>Year Ago Average</u>
Breakers	75-80	70.00-80.50	N/A	66.63
Boners	80-85	64.00-69.00	N/A	60.31
Lean	85-90	50.00-55.00	N/A	51.30
Bulls	YG 1-2	79.00-89.00	N/A	81.01

**Wyoming Auction Bred Cow(per hd)/Pair Prices (per pair)**

	<u>Bred Cows</u>	<u>Cow/Calf Pairs</u>
Heifers		
Young		
Middle Aged	1310.00	
Aged Short Solid	775.00-950.00	
Aged Short Term		

**WY and Western NE Grain Prices**

Daily Grain Report

		<u>Wyoming</u>	<u>Western NE</u>
<b>Wheat</b>	(bu)	6.61-6.93	6.60-7.18
<b>Corn</b>	(bu)	4.87-5.31	4.77-5.35
<b>Soybeans</b>	(bu)		10.85-11.57
<b>Millet</b>	(cwt)		19.00
<b>Sunflowers</b>	(cwt)		31.00

**USDA Livestock, Poultry and Grain Market News**

Wyoming

Thomas Walthers, OIC  
 Thomas.Walthers@usda.gov 308-390-5399  
[www.ams.usda.gov/lmarketnews](http://www.ams.usda.gov/lmarketnews)