

# WYOMING WEEKLY SUMMARY

## Recap For Week Ending

## July 31, 2020

**Receipts:** This Week: 1,895      Week Ago: 1,220      Year Ago: 574

Compared to last week, most lots of steers and heifers sold fully steady. Slaughter and feeding cows sold 5.00 to 7.00 higher and slaughter bulls sold 3.00 to 5.00 higher. Demand was good for all offerings on hand. **Note: The reporting period for the Wyoming Auction information in this report is Friday-Thursday. The grain and hay information remains Monday-Friday.**

### Wyoming Weekly Feeder Cattle Averages

#### Combined Wyoming Auctions including Torrington and Riverton

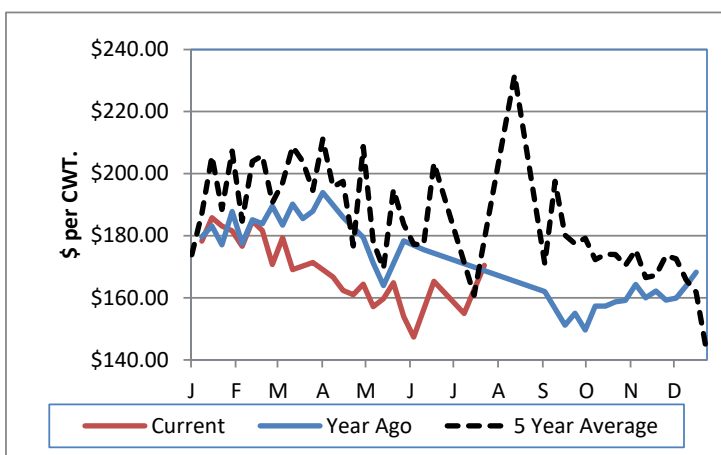
##### Feeder Steers

M&L 1	This Week	Last Week	Last Year
300-400 lbs	#N/A	#N/A	N/A
400-500 lbs	#N/A	#N/A	N/A
500-600 lbs	#N/A	\$170.50	N/A
600-700 lbs	\$155.00	\$154.41	N/A
700-800 lbs	\$150.18	\$145.46	N/A
800-900 lbs	\$144.00	#N/A	N/A
900-1000 lbs	\$128.11	\$129.00	N/A

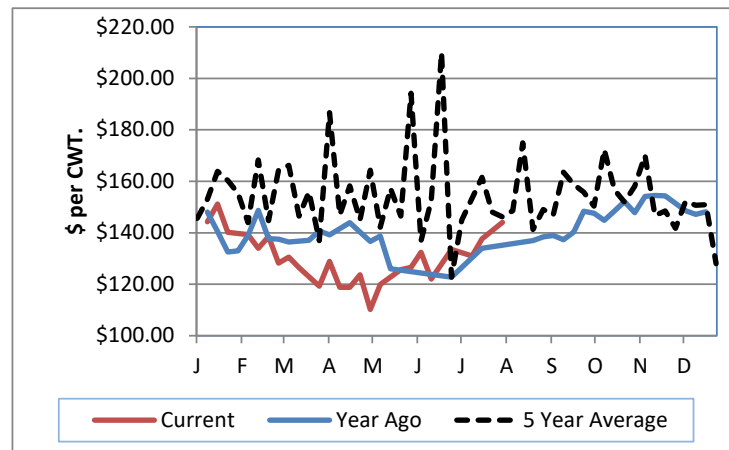
##### Feeder Heifers

M&L 1	This Week	Last Week	Last Year
300-400 lbs	#N/A	#N/A	N/A
400-500 lbs	#N/A	#N/A	N/A
500-600 lbs	\$141.00	#N/A	N/A
600-700 lbs	\$144.24	\$132.12	N/A
700-800 lbs	\$135.94	#N/A	N/A
800-900 lbs	\$135.06	\$121.50	N/A
900-1000 lbs	\$118.00	#N/A	N/A

Weekly M&L 1 500-600 lb. Feeder Steer Price



Weekly M&L 1 800-900 lb. Feeder Steer Price



### Weekly Hay Report

All sales dollars per ton

Alfalfa	Wyoming	Western NE
Supreme	195.00	175.00
Premium	160.00-210.00	180.00
Good	140.00-160.00	140.00-150.00
Fair	110.00	
Ground & Del		133.00-143.00

### Alfalfa/Grass

Premium	210.00-225.00
---------	---------------

### Valley Video Internet Hay Auction

7/2/2020

ALFALFA	4X4	3X4	Large Rounds
Prem/Supreme	181.00	165.00-170.00	
Good	151.00-156.00	143.00-160.00	136.00-140.00
Fair	137.00	135.00-145.00	133.00-142.00

### WY and Western NE Grain Prices

Daily Grain Report

		Wyoming	Western NE
Wheat	(bu)	3.92-4.00	3.82-4.07
Corn	(bu)	2.65-3.26	2.65-3.26
Soybeans	(bu)		7.32-7.88
Millet	(cwt)		11.50-12.00
Sunflowers	(cwt)		20.00-20.50

### Wyoming Auction Slaughter Cow and Bull Prices

	% Lean	TLCC	RLA	Year Ago Average
Breakers	75-80	63.50-73.00		61.56
Boners	80-85	66.00-72.50		62.42
Lean	85-90	62.00-71.00		57.42
Bulls	YG 1-2	87.00-97.00		82.52

### Wyoming Auction Bred Cow(per hd)/Pair Prices (per pair)

	Bred Cows	Cow/Calf Pairs
Heifers		
Young		
Middle Aged		
Aged Short Solid		
Aged Short Term		

### USDA Livestock, Poultry and Grain Market News Wyoming

Thomas Walthers, OIC  
 Thomas.Walthers@usda.gov 308-390-5399  
[www.ams.usda.gov/lsmarketnews](http://www.ams.usda.gov/lsmarketnews)