

WYOMING WEEKLY SUMMARY

Recap For Week Ending

October 22, 2021

Receipts: This Week: 15,925 Week Ago: 11,635 Year Ago: 17,578

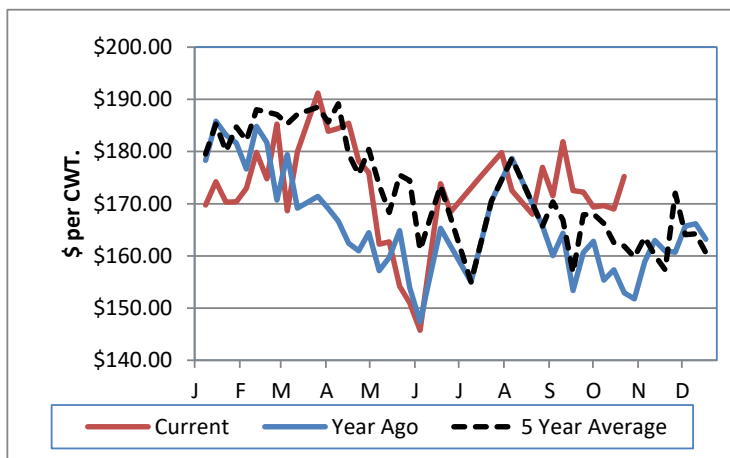
Compared to last week, steer calves sold steady and heifer calves sold steady to 2.00 lower. Yearling steers and heifers sold steady to 2.00 higher. Slaughter and feeding cows sold steady to 2.00 higher and bulls sold 2.00 lower. Demand was moderate to good for calves with good demand for yearling cattle. Calf buyers continue to seek out calves that have had a least two rounds of shots. Ranchers continue to sell off open, thin, or lower producing cows as feed resources are very tight in the reporting region. Some much-needed rain along with snow across different areas of Wyoming.

Wyoming Weekly Feeder Cattle Averages

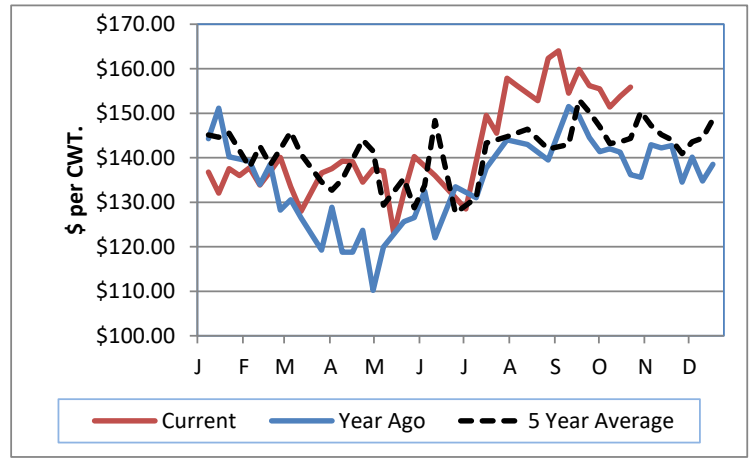
Combined Wyoming Auctions including Torrington and Riverton

<u>Feeder Steers</u>				<u>Feeder Heifers</u>			
M&L 1	This Week	Last Week	Last Year	M&L 1	This Week	Last Week	Last Year
300-400 lbs	\$211.37	\$219.08	\$186.54	300-400 lbs	\$181.39	\$182.78	\$158.59
400-500 lbs	\$191.56	\$190.61	\$171.71	400-500 lbs	\$162.44	\$162.97	\$146.89
500-600 lbs	\$175.19	\$168.95	\$152.95	500-600 lbs	\$150.44	\$148.84	\$136.28
600-700 lbs	\$159.51	\$162.85	\$143.43	600-700 lbs	\$138.64	\$149.13	\$136.61
700-800 lbs	\$163.83	\$161.67	\$145.19	700-800 lbs	\$150.42	\$149.53	\$137.20
800-900 lbs	\$155.88	\$153.77	\$136.16	800-900 lbs	\$146.62	\$146.50	\$132.27
900-1000 lbs	\$144.42	\$144.68	#N/A	900-1000 lbs	\$140.69	\$135.59	\$122.02

Weekly M&L 1 500-600 lb. Feeder Steer Price



Weekly M&L 1 800-900 lb. Feeder Steer Price



Weekly Hay Report

All sales dollars per ton

	<u>Wyoming</u>	<u>Western NE</u>
Alfalfa		
Sup/Premium	240.00-280.00	230.00-250.00
Good	200.00-220.00	210.00
Sun-Cur Pellets	315.00	
Cubes	300.00-320.00	
Ground & Del		225.00
Alfalfa/Grass		
Premium	250.00-300.00	

Valley Video Internet Hay Auction

7/1/2021

ALFALFA	4X4	3X4	Large Rounds
Prem/Supreme		207.00-221.00	
Good	202.00-211.00	203.00-210.00	160.00
Fair	195.00	190.00-208.00	190.00-195.00

Wyoming Auction Slaughter Cow and Bull Prices

	% Lean	TLCC	RLA	Year Ago Average
Breakers	75-80	61.00-65.50	N/A	67.47
Boners	80-85	59.00-64.00	N/A	65.52
Lean	85-90	49.00-55.50	N/A	53.73
Bulls	YG 1-2	80.50-86.00	N/A	83.05

Wyoming Auction Bred Cow(per hd)/Pair Prices (per pair)

	<u>Bred Cows</u>	<u>Cow/Calf Pairs</u>
Heifers		
Young		
Middle Aged		
Aged Short Solid		
Aged Short Term		

WY and Western NE Grain Prices

Daily Grain Report

		<u>Wyoming</u>	<u>Western NE</u>
Wheat	(bu)	6.87-7.24	6.84-7.14
Corn	(bu)	5.30-5.45	4.99-5.49
Soybeans	(bu)		11.10-11.85
Millet	(cwt)		19.00
Sunflowers	(cwt)		31.00

USDA Livestock, Poultry and Grain Market News

Wyoming

Thomas Walthers, OIC
 Thomas.Walthers@usda.gov 308-390-5399
www.ams.usda.gov/lsmarketnews