

WYOMING WEEKLY SUMMARY

Recap For Week Ending

May 7, 2021

Receipts: This Week: 5,413 Week Ago: 3,005 Year Ago: 6,118

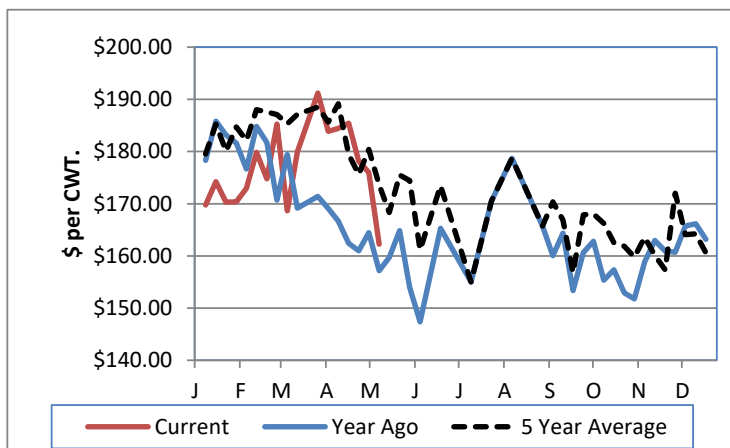
Compared to last week, steers under 800 lbs and heifers under 600 lbs sold sharply lower. Steers over 800 lbs steady to 1.00 lower and heifers over 600 lbs sold steady to 3.00 lower. Slaughter cows sold 1.00 to 3.00 lower and bulls sold 3.00 higher. Bred cows and pairs sold unevenly steady. Demand was moderate to good throughout the week. Another week of mostly dry conditions across the state. But the US Drought monitor saw a slight improvement in drought in the SE corner of the state from last week. However, bulk of the range areas still very dry. With grass growth very limited reporting auctions sold twice as many slaughter cattle and replacement cattle compared to same week last year.

Wyoming Weekly Feeder Cattle Averages

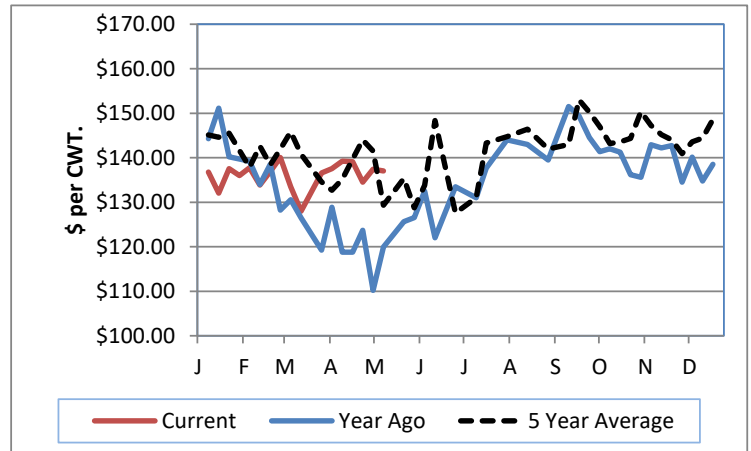
Combined Wyoming Auctions including Torrington and Riverton

<u>Feeder Steers</u>				<u>Feeder Heifers</u>			
M&L 1	This Week	Last Week	Last Year	M&L 1	This Week	Last Week	Last Year
300-400 lbs	\$195.97	\$192.50	\$169.70	300-400 lbs	\$151.00	\$173.78	\$161.74
400-500 lbs	\$163.11	\$182.82	\$171.20	400-500 lbs	\$149.72	\$157.51	\$147.12
500-600 lbs	\$162.25	\$175.99	\$157.19	500-600 lbs	\$140.96	\$152.23	\$138.60
600-700 lbs	\$162.34	\$173.63	\$148.88	600-700 lbs	\$141.70	\$144.91	\$132.31
700-800 lbs	\$145.29	\$156.80	\$134.15	700-800 lbs	\$127.05	\$129.41	\$121.00
800-900 lbs	\$137.01	\$137.41	\$119.96	800-900 lbs	\$123.53	\$123.72	\$115.51
900-1000 lbs	\$127.95	\$128.93	\$115.19	900-1000 lbs	\$91.50	\$115.00	\$110.50

Weekly M&L 1 500-600 lb. Feeder Steer Price



Weekly M&L 1 800-900 lb. Feeder Steer Price



Weekly Hay Report

All sales dollars per ton

<u>Alfalfa</u>	<u>Wyoming</u>	<u>Western NE</u>
Supreme		
Premium	225.00	
Good		
Cubes	280.00-300.00	
Ground & Del		173.00

Alfalfa/Grass

Good 140.00

Valley Video Internet Hay Auction

1/28/2021

<u>ALFALFA</u>	4X4	3X4	<u>Large Rounds</u>
Prem/Supreme	191.00-235.00	181.00-227.00	
Good	185.00-196.00	177.00-194.00	174.00-201.00
Fair		180.00	

Wyoming Auction Slaughter Cow and Bull Prices

	% Lean	<u>TLCC</u>	<u>RLA</u>	<u>Year Ago Average</u>
Breakers	75-80	68.43	60.10	49.26
Boners	80-85	67.93	56.22	56.33
Lean	85-90	59.03	53.07	52.02
Bulls	YG 1-2	89.81	85.42	81.51

Wyoming Auction Bred Cow(per hd)/Pair Prices (per pair)

	<u>Bred Cows</u>	<u>Cow/Calf Pairs</u>
Heifers	950.00	2025.00-2050.00
Young	800.00-1260.00	1475.00-1860.00
Middle Aged	910.00-1150.00	1300.00-1735.00
Aged Short Solid	785.00-925.00	1175.00-1385.00
Aged Short Term		

WY and Western NE Grain Prices

Daily Grain Report

		<u>Wyoming</u>	<u>Western NE</u>
Wheat	(bu)	6.23-6.76	6.23-6.86
Corn	(bu)	6.96-7.62	6.79-7.77
Soybeans	(bu)		14.24-15.34
Millet	(cwt)		32.00-34.00
Sunflowers	(cwt)		26.00-27.50

USDA Livestock, Poultry and Grain Market News

Wyoming

Thomas Walthers, OIC
 Thomas.Walthers@usda.gov 308-390-5399
www.ams.usda.gov/lsmarketnews