

WYOMING WEEKLY SUMMARY

Recap For Week Ending

August 7, 2020

Receipts: This Week: 899 Week Ago: 1,895 Year Ago: 866

Compared to last week: Feeder Steers and Heifers on a light test did not have enough comparable weights for an accurate market trend, steady to lower undertone noted. Breaker Utility Cows sold steady, Boner and Lean Utility Cows sold 2.00 to 3.00 higher. Slaughter Bulls higher undertone noted. **Note: The reporting period for the Wyoming Auction information in this report is Friday-Thursday. The grain and hay information remains Monday-Friday.**

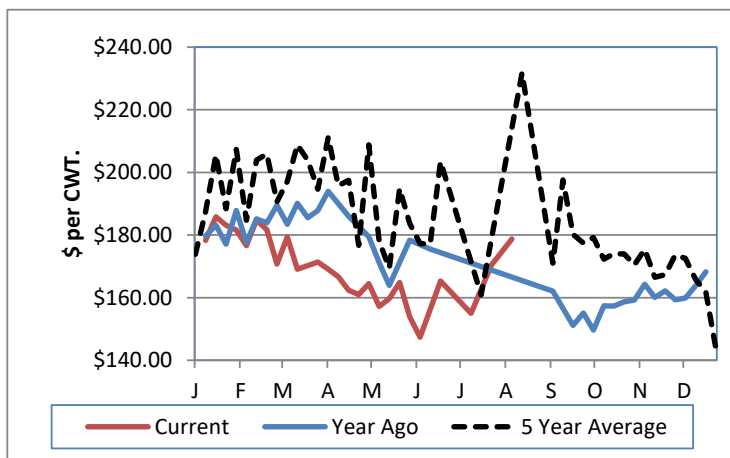
Wyoming Weekly Feeder Cattle Averages

Combined Wyoming Auctions including Torrington and Riverton

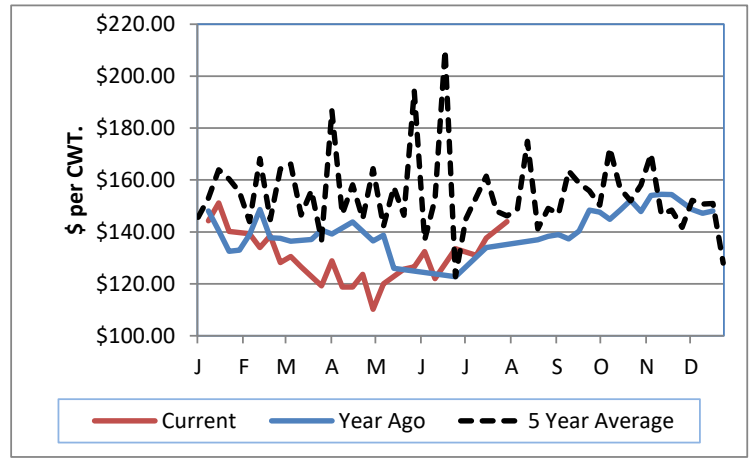
Feeder Steers			
M&L 1	This Week	Last Week	Last Year
300-400 lbs	#N/A	#N/A	N/A
400-500 lbs	#N/A	#N/A	N/A
500-600 lbs	\$178.71	#N/A	N/A
600-700 lbs	\$153.00	\$155.00	N/A
700-800 lbs	#N/A	\$150.18	N/A
800-900 lbs	#N/A	\$144.00	N/A
900-1000 lbs	\$125.84	\$128.11	N/A

Feeder Heifers			
M&L 1	This Week	Last Week	Last Year
300-400 lbs	#N/A	#N/A	N/A
400-500 lbs	#N/A	#N/A	N/A
500-600 lbs	\$361.00	\$141.00	N/A
600-700 lbs	#N/A	\$144.24	N/A
700-800 lbs	\$712.00	\$135.94	N/A
800-900 lbs	#N/A	\$135.06	N/A
900-1000 lbs	#N/A	\$118.00	N/A

Weekly M&L 1 500-600 lb. Feeder Steer Price



Weekly M&L 1 800-900 lb. Feeder Steer Price



Weekly Hay Report

All sales dollars per ton

Alfalfa	Wyoming	Western NE
Supreme	195.00	175.00
Premium	160.00-210.00	180.00
Good	160.00	140.00-150.00
Fair	140.00-170.00	
Ground & Del		133.00-143.00
Alfalfa/Grass		
Premium	195.00-225.00	

Wyoming Auction Slaughter Cow and Bull Prices

	% Lean	TLCC	RLA	Year Ago Average
Breakers	75-80	70.00	60.00-66.00	66.86
Boners	80-85	62.00-70.00	60.00-66.50	65.98
Lean	85-90	56.00-63.50	60.00-65.00	61.15
Bulls	YG 1-2	87.00-99.00	84.00-98.00	86.73

Wyoming Auction Bred Cow(per hd)/Pair Prices (per pair)

	Bred Cows	Cow/Calf Pairs
Heifers		
Young		
Middle Aged		
Aged Short Solid		
Aged Short Term		

Valley Video Internet Hay Auction

7/2/2020

ALFALFA	4X4	3X4	<u>Large Rounds</u>
Prem/Supreme	181.00	165.00-170.00	
Good	151.00-156.00	143.00-160.00	136.00-140.00
Fair	137.00	135.00-145.00	133.00-142.00

WY and Western NE Grain Prices

Daily Grain Report

		Wyoming	Western NE
Wheat	(bu)	3.65-3.97	3.63-3.95
Corn	(bu)	2.95-3.97	2.57-3.12
Soybeans	(bu)		7.21-7.86
Millet	(cwt)		11.50-12.00
Sunflowers	(cwt)		16.50-20.50

USDA Livestock, Poultry and Grain Market News

Wyoming

Thomas Walthers, OIC
 Thomas.Walthers@usda.gov 308-390-5399

www.ams.usda.gov/lsmarketnews