

WYOMING WEEKLY SUMMARY

Recap For Week Ending

November 27, 2020

Receipts: This Week: 7,283 Week Ago: 14,535 Year Ago: 5,529

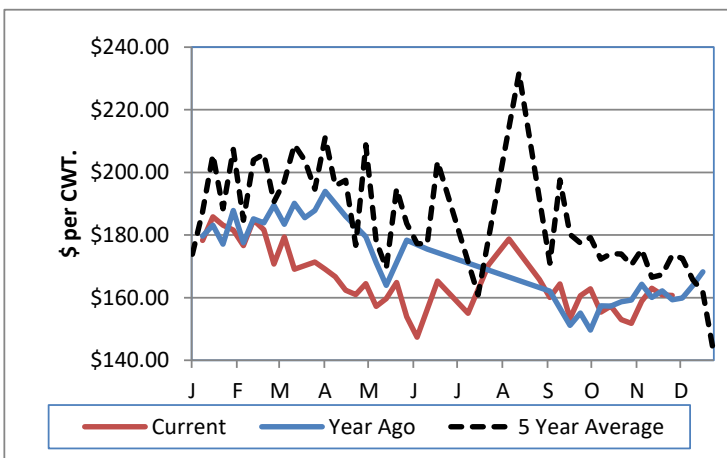
Compared to last week steer and heifer calves sold unevenly steady. Bred heifers and cows sold steady on comparable offerings. Slaughter cows and feeding cows sold 2.00 to 3.00 lower and slaughter bulls sold steady. Shorten receipts this week due to the Thanksgiving holiday as Torrington Livestock had only a Monday sale. Quite a lot of weigh-up cows, young and old, went back to the county to be fed. Demand was good for calves, feeders and bred heifers and cows with moderate demand for slaughter cattle. Dry conditions continue to prevail across the state. Many are very hopeful that some moisture will come this fall and through the winter. Large amounts of snowpack is needed so there will be ample amounts of irrigation and drinking water for next year's growing season. **Note: The reporting period for the Wyoming Auction information in this report is Friday -Thursday. The grain and hay information remains Monday-Friday**

Wyoming Weekly Feeder Cattle Averages

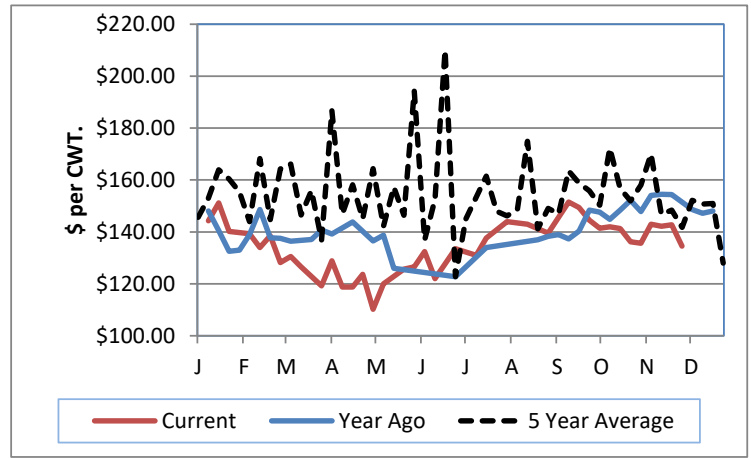
Combined Wyoming Auctions including Torrington and Riverton

Feeder Steers				Feeder Heifers			
M&L 1	This Week	Last Week	Last Year	M&L 1	This Week	Last Week	Last Year
300-400 lbs	\$189.27	\$195.58	\$197.96	300-400 lbs	\$165.41	\$166.83	\$161.77
400-500 lbs	\$181.15	\$181.08	\$177.76	400-500 lbs	\$152.32	\$157.45	\$150.56
500-600 lbs	\$160.71	\$160.92	\$159.31	500-600 lbs	\$137.89	\$147.21	\$130.59
600-700 lbs	\$143.43	\$142.71	\$146.17	600-700 lbs	\$131.45	\$135.31	N/A
700-800 lbs	\$133.90	\$143.62	\$131.00	700-800 lbs	\$136.50	\$141.04	N/A
800-900 lbs	\$134.50	\$142.76	N/A	800-900 lbs	\$132.29	\$138.86	N/A
900-1000 lbs	#N/A	\$131.85	N/A	900-1000 lbs	\$126.00	\$131.06	N/A

Weekly M&L 1 500-600 lb. Feeder Steer Price



Weekly M&L 1 800-900 lb. Feeder Steer Price



Weekly Hay Report All sales dollars per ton

Alfalfa	<u>Wyoming</u>	<u>Western NE</u>
Supreme	205.00-220.00	195.00-205.00
Premium	175.00-220.00	
Good	150.00-175.00	160.00-170.00
Fair		
Ground & Del		173.00
Alfalfa/Grass		
Premium	190.00-225.00	

Valley Video Internet Hay Auction 8/13/2020

ALFALFA	4X4	3X4	Large Rounds
Prem/Supreme	174.00-183.00	173.00-174.00	
Good	160.00-171.00	150.00-165.00	
Fair		150.00	140.00-148.00

Wyoming Auction Slaughter Cow and Bull Prices

	% Lean	<u>TLCC</u>	<u>RLA</u>	<u>Year Ago Average</u>
Breakers	75-80	56.50-70.00		65.63
Boners	80-85	54.00-61.50		62.61
Lean	85-90	40.00-49.50		44.92
Bulls	YG 1-2	76.00-84.00		79.37

Wyoming Auction Bred Cow(per hd)/Pair Prices (per pair)

	<u>Bred Cows</u>	<u>Cow/Calf Pairs</u>
Heifers	1360.00-1550.00	
Young	1250.00-1525.00	
Middle Aged	1235.00-1535.00	
Aged Short Solid	925.00-1075.00	
Aged Short Term	800.00-975.00	

WY and Western NE Grain Prices Daily Grain Report

		<u>Wyoming</u>	<u>Western NE</u>
Wheat	(bu)	4.85-5.11	4.79-5.31
Corn	(bu)	4.17-4.46	3.81-4.42
Soybeans	(bu)		10.44-11.42
Millet	(cwt)		20.00
Sunflowers	(cwt)		18.25-18.50

USDA Livestock, Poultry and Grain Market News

Wyoming
Thomas Walthers, OIC
Thomas.Walthers@usda.gov 308-390-5399
www.ams.usda.gov/lmarketnews