

**AUCTION SUMMARY**

<b>AMS 1281</b>		6,945	Wednesday		
<b>OKC West Livestock Auction</b>		El Reno, OK			
Feeder Steers	500-600 lbs	164.00-184.00	Feeder Heifers	400-500 lbs	155.00-164.00
Medium &	600-700 lbs	155.00-176.00	Medium &	500-600 lbs	145.00-155.00
Large #1	700-800 lbs	150.00-163.00	Large #1	600-700 lbs	144.00-153.50
	800-900 lbs	144.50-163.50		700-800 lbs	141.50-149.50
	900-1000 lbs	138.00-155.90		800-900 lbs	138.50-141.50

<b>AMS 1852</b>		3,455	Wednesday		
<b>Bassett Livestock Auction</b>		Bassett, NE			
Feeder Steers	400-500 lbs	200.00-211.00	Feeder Heifers	400-500 lbs	168.00-175.00
Medium &	500-600 lbs	174.00-187.50	Medium &	500-600 lbs	156.00-175.50
Large #1	600-700 lbs	158.50-170.00	Large #1	600-700 lbs	139.75-157.00
	700-800 lbs	149.25-160.50		700-800 lbs	131.00-144.50
	800-900 lbs	144.75		800-900 lbs	126.00-135.00

<b>AMS 1848</b>		2,810	Wednesday		
<b>Huss Livestock Market</b>		Kearney, NE			
Feeder Steers	500-600 lbs	175.50	Feeder Heifers	500-600 lbs	151.00-157.00
Medium &	600-700 lbs	153.00	Medium &	600-700 lbs	147.00-152.25
Large #1	700-800 lbs	157.50-155.60	Large #1	700-800 lbs	144.00-149.50
	800-900 lbs	152.50-156.75		800-900 lbs	145.75
	900-1000 lbs	146.75-159.00		900-1000 lbs	137.00-145.00

**CHICAGO MERCANTILE EXCHANGE LIVESTOCK FUTURES SETTLEMENT** Wednesday

Live Cattle			Feeder Cattle		
		Change			Change
Aug	120.050	0.270	Aug	156.770	1.250
Oct	125.250	0.550	Sep	159.300	1.520
Dec	131.050	0.620	Oct	161.100	1.520

**CHICAGO BOARD OF TRADE GRAIN FUTURES SETTLEMENTS** Wednesday

Corn			Soybeans		
		Change			Change
Sep	5.7175	Unch	Aug	14.3925	(0.0450)
Dec	5.6850	0.0275	Sep	13.9775	(0.0125)
Mar	5.7550	0.0250	Nov	13.8975	0.0125

KANSAS CITY BOARD OF TRADE		Wheat		Change	
		Sep	6.6875	0.0850	
		Dec	6.7975	0.0850	
		Mar	6.8700	0.0850	

**AMS 2466** Wednesday

**5 AREA WKLY ACCUMULATED WTD AVG SLAUGHTER CATTLE PRICE**

	Head Count	Avg Weight	Avg Price
Live Steer	620	1,428	121.17
Live Heifer	296	1,334	118.25
Dressed Steer	749	884	199.91
Dressed Heifer	800	857	199.73

**AMS 2453** Wednesday

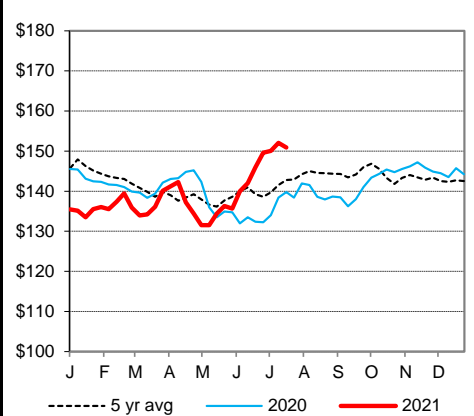
**DAILY ESTIMATED BOXED BEEF CUTOUT VALUES**

Choice	Select	Choice Cuts	81 loads
600-900#	600-900#	Select Cuts	43 loads
265.24	248.77	Trimming	17 loads
0.36	0.19	Grinds	21 loads

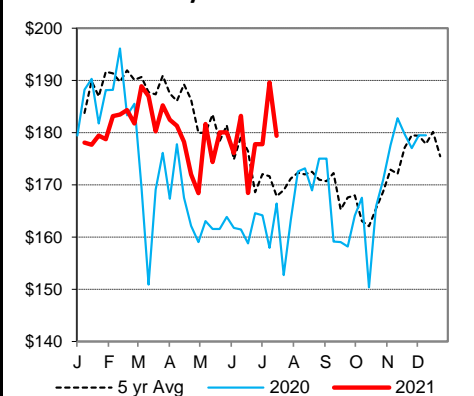
**SJ LS710** Wednesday

ESTD DAILY CATTLE SLAUGHTER		Joplin Regional Stockyards		
Wednesday	117,000	Avg Dressing		
Week Ago (est)	119,000		Price	
Year Ago (act)	116,000	Breaking	75-80	65.00-73.50
Wk to date (est)	349,000	Boning	80-85	66.00-72.00
Last Week (est)	360,000	Lean	85-90	56.00-64.50
Last Year (act)	348,000	Tuesday		
Previous Day Estimated:	Steer and Heifer	92,000		
	Cow and Bull	25,000		

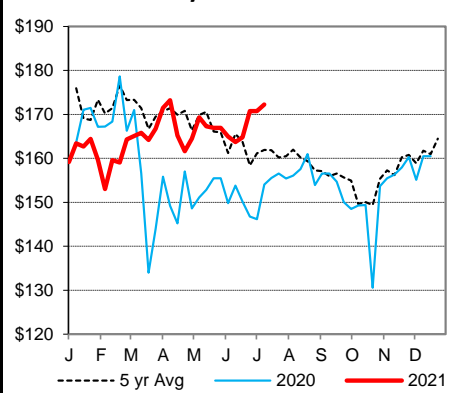
**CME Feeder Cattle Index**



**Oklahoma City 400-500 lb Steer Price**



**Oklahoma City 500-600 lb Steer Price**



**Oklahoma City 700-800 lb Steer Price**

