

AUCTION SUMMARY

AMS 1281		7,245		Wednesday	
OKC West Livestock					
El Reno, OK					
Feeder Steers	400-500 lbs	173.50-182.00	Feeder Heifers	400-500 lbs	143.00-152.00
Medium &	500-600 lbs	159.00-170.00	Medium &	500-600 lbs	142.00-148.00
Large #1	600-700 lbs	157.00-169.50	Large #1	600-700 lbs	150.00
	700-800 lbs	148.75-159.50		700-800 lbs	141.00-147.00
	800-900 lbs	141.00-157.00		800-900 lbs	131.00-144.25

AMS 2020		3,118		Wednesday	
Hub City Livestock					
Aberdeen, SD					
Feeder Steers	500-600 lbs	183.00-187.00	Feeder Heifers	400-500 lbs	152.50-157.50
Medium &	600-700 lbs	167.50	Medium &	500-600 lbs	148.00
Large #1	700-800 lbs	154.00-162.00	Large #1	600-700 lbs	
	800-900 lbs	152.50-166.60		700-800 lbs	142.25-151.00
	900-1000 lbs	152.50-160.25		800-900 lbs	140.00-145.50

AMS 1774		2,905		Wednesday	
Public Auction Yards					
Billings, MT					
Feeder Steers	500-600 lbs	164.00	Feeder Heifers	400-500 lbs	165.00
Medium &	600-700 lbs	160.00	Medium &	500-600 lbs	
Large #1	700-800 lbs	165.75	Large #1	600-700 lbs	
	800-900 lbs	141.00		700-800 lbs	147.00
	900-1000 lbs			800-900 lbs	138.00-146.50

CHICAGO MERCANTILE EXCHANGE LIVESTOCK FUTURES SETTLEMENT Wednesday

Live Cattle			Feeder Cattle		
		Change			Change
Oct	124.170	0.050	Sep	154.720	(0.550)
Dec	129.450	(0.200)	Oct	156.500	(1.650)
Feb	133.150	(0.100)	Nov	157.570	(2.150)

CHICAGO BOARD OF TRADE GRAIN FUTURES SETTLEMENTS Wednesday

Corn			Soybeans		
		Change			Change
Nov	5.3350	0.1325	Nov	12.9450	0.1200
Jan	5.4075	0.1250	Jan	13.0350	0.1175
Mar	5.4475	0.1150	Mar	13.0775	0.1150

KANSAS CITY BOARD OF TRADE		Wheat		Change	
		Dec	7.1600		0.1425
		Mar	7.2450		0.1400
		May	7.2875		0.1375

AMS 2466 Wednesday

5 AREA WKLY ACCUMULATED WTD AVG SLAUGHTER CATTLE PRICE

	Head Count	Avg Weight	Avg Price
Live Steer	454	1,566	123.91
Live Heifer	295	1,225	124.00
Dressed Steer	1,905	946	196.97
Dressed Heifer	129	816	196.00

AMS 2453 Wednesday

DAILY ESTIMATED BOXED BEEF CUTOUT VALUES

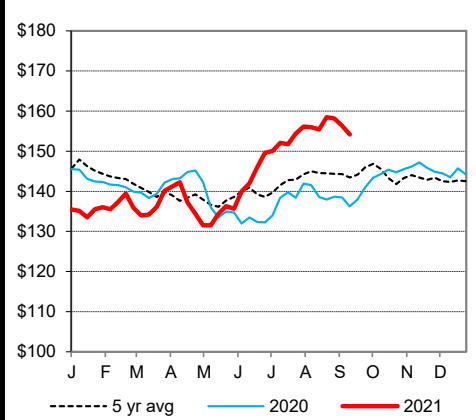
Choice	Select	Choice Cuts	111 loads
600-900#	600-900#	Select Cuts	40 loads
319.82	283.89	Trimming	14 loads
(3.07)	(6.73)	Grinds	26 loads

SJ LS710 Wednesday

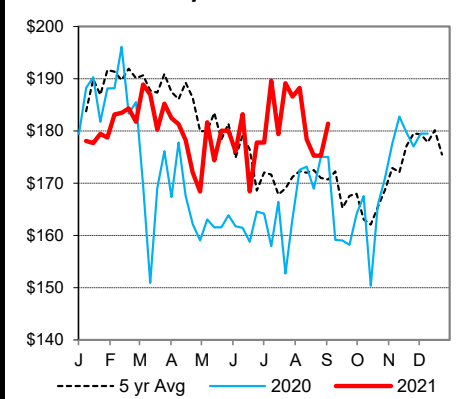
ESTD DAILY CATTLE SLAUGHTER

Wednesday	121,000	AMS 1797 Wednesday	
Week Ago (est)	121,000	Joplin Regional Stockyards	
Year Ago (act)	120,000	Avg Dressing	
Wk to date (est)	355,000	Pct Lean	
Last Week (est)	245,000	Breaking	75-80 65.50-73.00
Last Year (act)	360,000	Boning	80-85 64.00-70.00
Previous Day Estimated:	Steer and Heifer	Lean	85-90 55.00-62.00
	Cow and Bull	Tuesday	
		94,000	
		26,000	

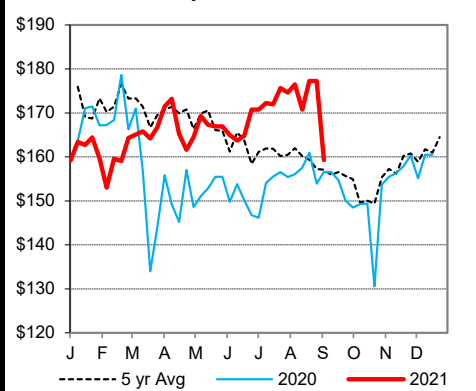
CME Feeder Cattle Index



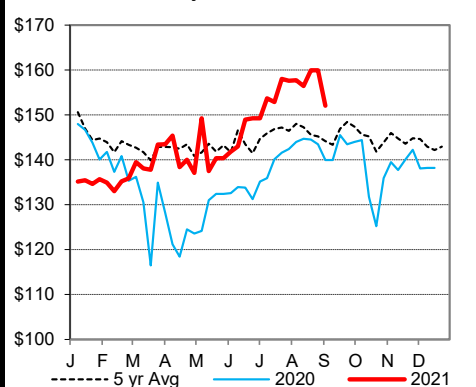
Oklahoma City 400-500 lb Steer Price



Oklahoma City 500-600 lb Steer Price



Oklahoma City 700-800 lb Steer Price



St. Joseph, Missouri

Phone: 816-676-7000

Email: stjoe.lpgmn@usda.gov

<http://www.ams.usda.gov/LSMarketNews>