

**AUCTION SUMMARY**

<b>AMS 2023</b>				6,661	Tuesday
<b>Philip Livestock Auction</b>				Philip, SD	
Feeder Steers	300-400 lbs	217.50-227.50	Feeder Heifers	300-400 lbs	168.00-185.00
Medium &	400-500 lbs	182.00-211.00	Medium &	400-500 lbs	160.00-174.00
Large #1	500-600 lbs	170.50-189.00	Large #1	500-600 lbs	154.00-175.50
	600-700 lbs	168.00-183.75		600-700 lbs	152.50-157.50
	700-800 lbs	167.00-169.00		700-800 lbs	152.50-155.00

<b>AMS 1249</b>				2,282	Tuesday
<b>Ozarks Regional Stockyards</b>				West Plains, MO	
Feeder Steers	400-500 lbs	172.00-182.00	Feeder Heifers	300-400 lbs	150.00-155.00
Medium &	500-600 lbs	167.00-177.00	Medium &	400-500 lbs	144.00-159.00
Large #1	600-700 lbs	158.00-171.00	Large #1	500-600 lbs	140.00-152.00
	700-800 lbs	152.50-156.00		600-700 lbs	143.00-149.00
	800-900 lbs	153.00-154.00		700-800 lbs	146.00-148.00

<b>AMS 1815</b>				2,158	Tuesday
<b>Kingsville Livestock Auction</b>				Kingsville, MO	
Feeder Steers	500-600 lbs	164.00-187.00	Feeder Heifers	400-500 lbs	153.00-161.00
Medium &	600-700 lbs	160.00	Medium &	500-600 lbs	150.50-161.50
Large #1	700-800 lbs	163.00-174.00	Large #1	600-700 lbs	149.75
	800-900 lbs	156.00-166.00		700-800 lbs	140.50-153.25
	900-1000 lbs	155.50-155.85		800-900 lbs	132.50

**CHICAGO MERCANTILE EXCHANGE LIVESTOCK FUTURES SETTLEMENT** Tuesday

Live Cattle			Feeder Cattle		
		Change			Change
Oct	126.820	1.800	Oct	155.970	0.350
Dec	131.450	1.920	Nov	159.770	1.300
Feb	136.370	1.620	Jan	160.600	2.020

**CHICAGO BOARD OF TRADE GRAIN FUTURES SETTLEMENTS** Tuesday

Corn			Soybeans		
		Change			Change
Dec	5.4350	0.0550	Nov	12.3800	0.0075
Mar	5.5225	0.0550	Jan	12.4750	0.0050
May	5.5625	0.0575	Mar	12.5675	0.0050

KANSAS CITY BOARD OF TRADE			Wheat		
		Change			Change
			Dec	7.7725	(0.0050)
			Mar	7.8025	(0.0025)
			May	7.8025	0.0075

**AMS 2466** Tuesday

**5 AREA WKLY ACCUMULATED WTD AVG SLAUGHTER CATTLE PRICE**

	Head Count	Avg Weight	Avg Price
Live Steer	0	N/A	N/A
Live Heifer	0	N/A	N/A
Dressed Steer	0	N/A	N/A
Dressed Heifer	0	N/A	N/A

**AMS 2453** Tuesday

**DAILY ESTIMATED BOXED BEEF CUTOUT VALUES**

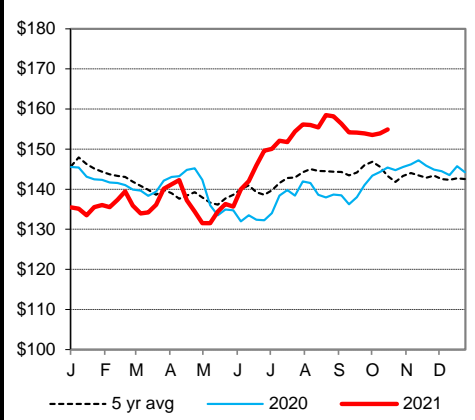
Choice	Select	Choice Cuts	49 loads
600-900#	600-900#	Select Cuts	31 loads
284.76	262.54	Trimming	25 loads
1.72	(0.65)	Grinds	31 loads

**SJ LS710** Wednesday

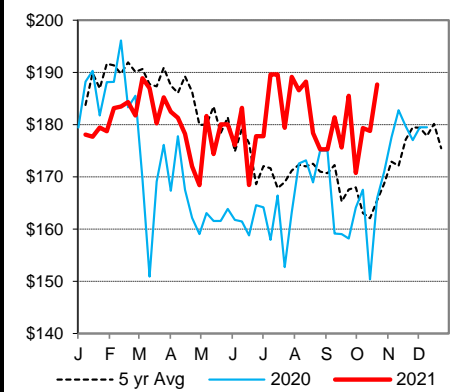
**ESTD DAILY CATTLE SLAUGHTER**

Tuesday	122,000	<b>AMS 1823</b> Wednesday	
Week Ago (est)	121,000	<b>Oklahoma National Stockyards</b>	
Year Ago (act)	119,000	Avg Dressing	
Wk to date (est)	244,000	Pct Lean	
Last Week (est)	241,000	Breaking	75-80 61.00-66.00
Last Year (act)	235,000	Boning	80-85 55.00-60.00
<b>Previous Day Estimated:</b>	<b>Steer and Heifer</b>	Lean	85-90 51.00-57.00
	<b>Cow and Bull</b>	Monday	
		Tuesday	

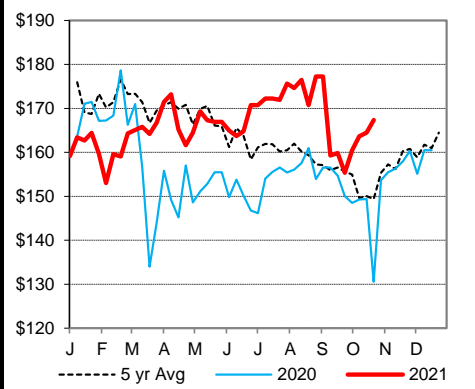
**CME Feeder Cattle Index**



**Oklahoma City 400-500 lb Steer Price**



**Oklahoma City 500-600 lb Steer Price**



**Oklahoma City 700-800 lb Steer Price**

