

AUCTION SUMMARY

AMS 1280		7,000	Monday		
Oklahoma National Stockyards Oklahoma City, OK					
Feeder Steers	500-600 lbs	150.00-173.00	Feeder Heifers	400-500 lbs	140.00-156.00
Medium &	600-700 lbs	147.25-161.00	Medium &	500-600 lbs	136.00-156.00
Large #1	700-800 lbs	145.00-158.60	Large #1	600-700 lbs	138.00-150.00
	800-900 lbs	140.00-155.00		700-800 lbs	132.00-144.60
	900-1000 lbs	128.00-139.50		800-900 lbs	126.00-136.00

AMS 1245		4,412	Monday		
Joplin Regional Stockyards Carthage, MO					
Feeder Steers	400-500 lbs	175.00-184.00	Feeder Heifers	300-400 lbs	160.00-167.00
Medium &	500-600 lbs	170.00-174.00	Medium &	400-500 lbs	150.00-154.00
Large #1	600-700 lbs	161.00-165.00	Large #1	500-600 lbs	148.00-151.50
	700-800 lbs	150.00-155.00		600-700 lbs	145.00-150.00
	800-900 lbs	146.00-152.25		700-800 lbs	140.00-141.00

AMS 1855		3,000	Monday		
Tri-State Livestock Auction McCook, NE					
Feeder Steers	400-500 lbs	180.00-198.00	Feeder Heifers	300-400 lbs	176.50-210.00
Medium &	500-600 lbs	165.00-192.50	Medium &	400-500 lbs	159.00-175.00
Large #1	600-700 lbs	161.00-167.00	Large #1	500-600 lbs	151.00-166.00
	700-800 lbs	163.25		600-700 lbs	152.50-171.50
	800-900 lbs	146.00-155.75		700-800 lbs	148.00

CHICAGO MERCANTILE EXCHANGE LIVESTOCK FUTURES SETTLEMENT Monday

Live Cattle			Feeder Cattle		
		Change			Change
Oct	122.770	(0.020)	Sep	155.000	0.120
Dec	128.070	0.550	Oct	156.670	0.300
Feb	131.520	(0.020)	Nov	156.530	0.520

CHICAGO BOARD OF TRADE GRAIN FUTURES SETTLEMENTS Monday

Corn			Soybeans		
		Change			Change
Dec	5.2175	(0.0550)	Nov	12.6250	(0.2150)
Mar	5.2975	(0.0450)	Jan	12.7175	(0.2125)
May	5.3450	(0.0375)	Mar	12.7625	(0.2100)

KANSAS CITY BOARD OF TRADE			Wheat		
		Change			Change
Dec	7.0075	(0.0800)	Dec	7.0075	(0.0800)
Mar	7.1150	(0.0825)	Mar	7.1150	(0.0825)
May	7.1500	(0.0775)	May	7.1500	(0.0775)

AMS 2466 Monday

5 AREA WKLY ACCUMULATED WTD AVG SLAUGHTER CATTLE PRICE

	Head Count	Avg Weight	Avg Price
Live Steer	15,063	1,473	123.88
Live Heifer	7,887	1,332	124.19
Dressed Steer	13,690	961	198.64
Dressed Heifer	4,824	840	198.82

AMS 2453 Monday

DAILY ESTIMATED BOXED BEEF CUTOUT VALUES

Choice	Select	Choice Cuts	40 loads
600-900#	600-900#	Select Cuts	21 loads
315.66	280.75	Trimming	9 loads
1.19	1.00	Grinds	13 loads

SJ LS710 Monday

ESTD DAILY CATTLE SLAUGHTER

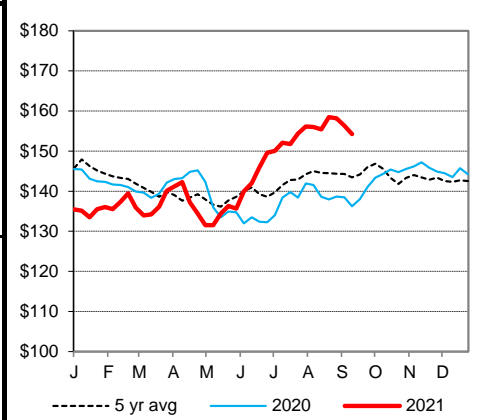
Monday	119,000
Week Ago (est)	114,000
Year Ago (act)	118,000
Wk to date (est)	119,000
Last Week (est)	114,000
Last Year (act)	118,000
Previous Day Estimated:	Steer and Heifer
	Cow and Bull

AMS 1788 Monday

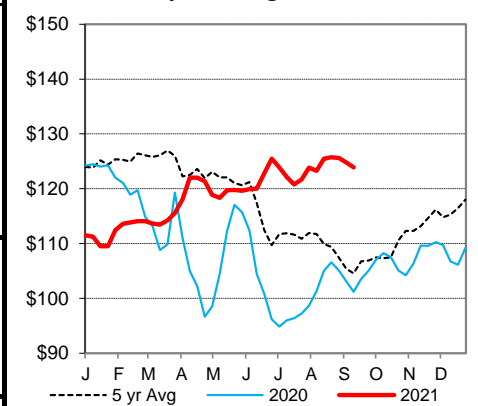
Springfield Livestock Marketing Center

		Avg Dressing
	Pct Lean	Price
Breaking	75-80	62.50-69.00
Boning	80-85	58.00-69.00
Lean	85-90	48.00-59.00
Friday	Saturday	
93,000	51,000	
25,000	13,000	

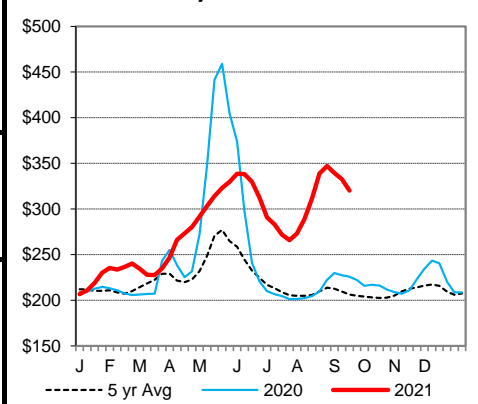
CME Feeder Cattle Index



5 Area Wkly Wtd Avg Sltr Steer Price



Weekly Choice Cutout



Weekly Select Cutout

