

AUCTION SUMMARY

AMS 1903		1,497	Wednesday
La Junta Livestock Commission			
La Junta, CO			
Feeder Steers	300-400 lbs	181.00-210.00	Feeder Heifers 300-400 lbs
Medium &	400-500 lbs	170.00-177.00	Medium & 400-500 lbs
Large #1	500-600 lbs	153.00-164.00	Large #1 500-600 lbs
	600-700 lbs	160.00-162.00	600-700 lbs
	700-800 lbs		700-800 lbs

AMS 1255		402	Wednesday
Springfield Livestock Marketing Center			
Springfield, MO			
Feeder Steers	300-400 lbs	173.00-181.00	Feeder Heifers 300-400 lbs
Medium &	400-500 lbs	171.00-180.00	Medium & 400-500 lbs
Large #1	500-600 lbs	159.00-169.00	Large #1 500-600 lbs
	600-700 lbs	151.00	600-700 lbs
	700-800 lbs		700-800 lbs

AMS 1901		1,858	Tuesday
Imperial Auction Market			
La Junta, CO			
Feeder Steers	300-400 lbs	200.00	Feeder Heifers 300-400 lbs
Medium &	400-500 lbs	188.00-191.50	Medium & 400-500 lbs
Large #1	500-600 lbs	160.00-170.00	Large #1 500-600 lbs
	600-700 lbs	149.00-153.00	600-700 lbs
	700-800 lbs		700-800 lbs

CHICAGO MERCANTILE EXCHANGE LIVESTOCK FUTURES SETTLEMENT Wednesday

Live Cattle		Change	Feeder Cattle		Change
Dec	137.900	2.500	Jan	166.920	2.550
Feb	140.870	1.450	Mar	167.900	2.225
Apr	143.900	1.100	Apr	169.800	1.775

CHICAGO BOARD OF TRADE GRAIN FUTURES SETTLEMENTS Wednesday

Corn		Change	Soybeans		Change
Dec	5.7975	(0.0075)	Jan	12.6650	(0.0650)
Mar	5.8550	(0.0275)	Mar	12.7725	(0.0725)
May	5.9000	(0.0275)	May	12.8650	(0.0725)

KANSAS CITY BOARD OF TRADE		Wheat	Change
		Dec	8.7325 (0.0550)
		Mar	8.7700 (0.0700)
		May	8.7600 (0.0775)

AMS 2466 Wednesday

5 AREA WKLY ACCUMULATED WTD AVG SLAUGHTER CATTLE PRICE

	Head Count	Avg Weight	Avg Price
Live Steer	18,350	1,499	136.46
Live Heifer	10,151	1,319	136.29
Dressed Steer	3,509	951	215.12
Dressed Heifer	1,230	849	216.08

AMS 2453 Wednesday

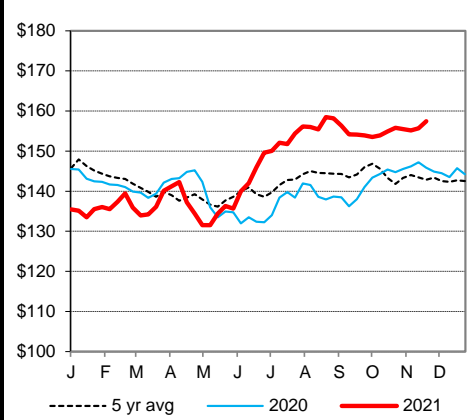
DAILY ESTIMATED BOXED BEEF CUTOUT VALUES

Choice	Select	Choice Cuts	73 loads
600-900#	600-900#	Select Cuts	37 loads
279.11	263.47	Trimming	5 loads
0.47	0.80	Grinds	15 loads

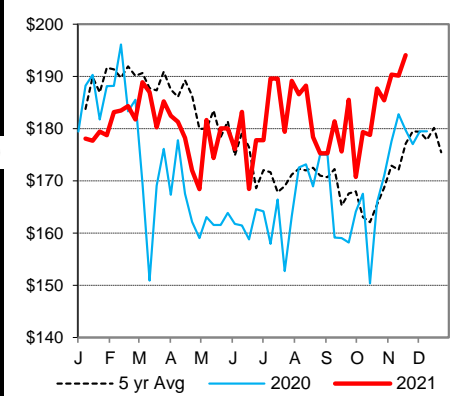
SJ LS710 Wednesday

ESTD DAILY CATTLE SLAUGHTER		AMS 1797	
Wednesday	121,000	Joplin Regional Stockyards	
Week Ago (est)	122,000	Avg Dressing	
Year Ago (act)	119,000	Pct Lean Price	
Wk to date (est)	365,000	Breaking	75-80 55.00-63.00
Last Week (est)	365,000	Boning	80-85 50.00-58.00
Last Year (act)	360,000	Lean	85-90 44.00-51.00
Previous Day Estimated:	Steer and Heifer	Tuesday	
	Cow and Bull	95,000	
		27,000	

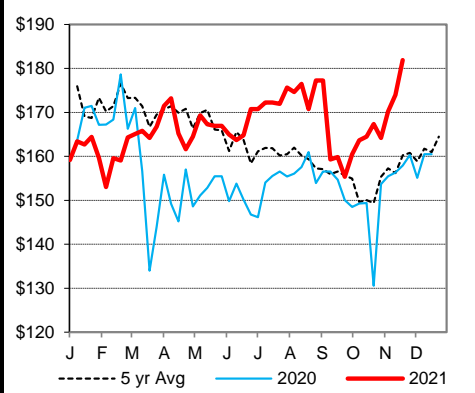
CME Feeder Cattle Index



Oklahoma City 400-500 lb Steer Price



Oklahoma City 500-600 lb Steer Price



Oklahoma City 700-800 lb Steer Price

