



United States  
Department of  
Agriculture

National  
Agricultural  
Statistics  
Service



# **Farms, Land in Farms, and Livestock Operations 2009 Summary**

## **February 2010**

ISSN: 1930-7128

# USDA





## Contents

### National Summaries

Number of Farms and Land in Farms ..... 4

Livestock Operations ..... 5

Number of Farms, Land in Farms, and Average Farm Size ..... 6

### Livestock Operations by Species, U.S.

Cattle and Calves ..... 20

Beef Cows ..... 20

Milk Cows ..... 21

Milk Production ..... 21

Hogs and Pigs ..... 22

Sheep and Goats ..... 23

Reliability Statement ..... 24

Terms and Definitions ..... 25

Farm Definition History ..... 26

Special Note Regarding the 2007 Estimates ..... 27

Contacts ..... 29

## Update Alert – February 19, 2010

The *Farms, Land in Farms, and Livestock Operations 2009 Summary* released on February 12, 2010 by USDA's National Agricultural Statistics Service (NASS) is being reissued due to corrections in Land in Farms tables. On page 13, the 2008 estimate for Northeast region's other states total for the land in farms in the "\$500,000 & over" sales class has been corrected to be 965,000 acres. The 2008 estimate for Northeast region total for the land in farms in the "\$500,000 & over" sales class has been corrected to 4,355,000 acres. The 2008 estimate for the U.S. total for the land in farms in the "\$500,000 & over" sales class has been corrected to 293,055,000 acres. The total land in farms for the Northeast region and the U.S. was published correctly.

## Special Note

NASS is in the process of modifying report layouts in order to improve readability. This is the first issue produced using the new layout. This revised report issue is published using both layouts but future issues will only be produced using this layout. The previous layout is available on the NASS website: [www.nass.usda.gov](http://www.nass.usda.gov).

## 2009 Number of Farms and Land in Farms Highlights

**The number of farms in the United States** in 2009 is estimated at 2.2 million, virtually unchanged from 2008. Total land in farms, at 919.8 million acres, decreased 110 thousand acres from 2008. The average farm size is 418 acres, unchanged from the previous year.

Farm numbers and land in farms are broken down into five economic sales classes. Farms and ranches are classified into these "sales classes" by summing their sales of agricultural products and government program payments. Sales class breaks occur at \$10,000, \$100,000, \$250,000, and \$500,000.

**Farm numbers declined slightly** in the \$10,000-\$99,999 and \$500,000 and over sales classes. Lower commodity prices and smaller value of sales contributed to changes in the number of farms within these sales classes. Farm numbers increased 0.5 percent, to 1.23 million farms, in the \$1,000 - \$9,999 sales class. Meanwhile, the number of farms in the \$500,000 and over sales class decreased by 1.0 percent to 124,720 farms.

**Land in farms decreased** in the smallest and largest sales classes. In the \$1,000-\$9,999 sales class, land in farms dropped 1.1 percent, to 105.5 million acres. Land operated by farms in the \$500,000 & over in sales class decreased 1.0 percent, to 290.0 million acres. Land operated by farms with \$250,000-\$499,999 in sales increased by 4.1 percent.

The **average farm size** was unchanged in 2009. However, average farm sizes declined in some of the sales classes partially due to smaller farms moving up to higher sales classes.

This report also contains estimates of farm numbers and land in farms for **Puerto Rico**. The number of farms with sales of \$1,000 or more in Puerto Rico was 10,400 in 2009, down 800 farms from 2008. Land in farms, at 450,000 acres, is down 20,000 acres from the previous year. The average farm size in Puerto Rico in 2009 was estimated at 43 acres.

## 2009 Livestock Operations Highlights

**The number of operations with cattle** totaled 950,000 for 2009, down 1 percent from 2008. Beef cow operations in 2009, at 753,000, were also down 1 percent from last year. The number of milk cow operations for 2009 totaled 65,000, down 3 percent from 2008.

The three operation classes: cattle, beef cows, and milk cows, are classified into size groups independently. Therefore, it is possible to have more beef cow operations in a particular size group than cattle operations. As an example, an operator with 75 cattle and 40 beef cows would be classified in the 50-99 size group for cattle and 1-49 size group for beef cows.

**The number of operations with hogs** totaled 71,450 for 2009, down 2 percent from 2008. Places with 2,000 or more head accounted for 86 percent of the inventory.

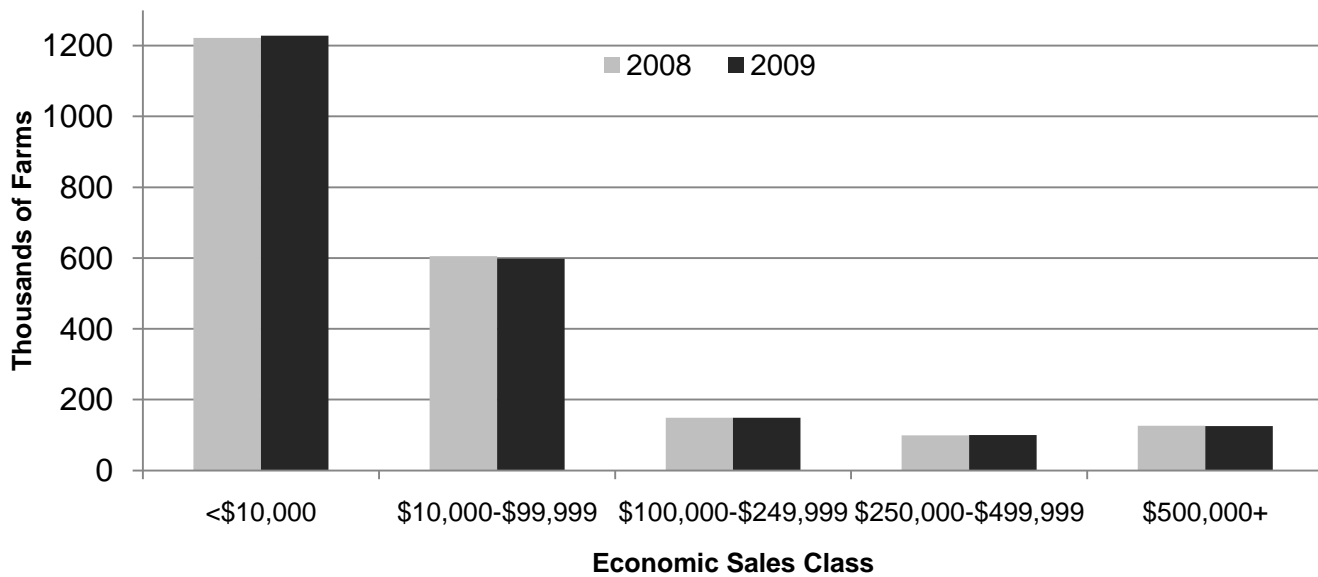
**The number of operations with sheep** totaled 82,000 for 2009, down 1 percent from 2008. Of all sheep operations that include breeding sheep, 93.7 percent were comprised of 1-99 head, 5.2 percent had 100-499 head, and the remaining 1.1 percent were operations with 500 head or more. Operations with 1-99 head account for 36.2 percent of the inventory, 100-499 head account for 20.8 percent of the inventory, and 500+ head account for 43.0 percent of the inventory.

**The number of operations with goats** totaled 152,000 for 2009, up 1 percent from a year earlier. Angora goat operations totaled 5,400, down 17 percent from 2008. Milk goat operations totaled 30,000, up 3 percent from 2008. Meat goat operations totaled 130,000, up 1 percent from a year earlier. Total goat operations will be equal to or less than the sum of angora, milk and meat because places which own more than one goat type count as only one operation.

### Special Note

State level numbers are published in conjunction with the Census of Agriculture every five years. The number of operations at the U.S. level are published on an annual basis. The reference date for operation estimates is December 31 beginning with the 2007 estimates. This change from the previous definition of an operation as any place having one or more head of a specie on hand at any time during the year results in a break in the data series.

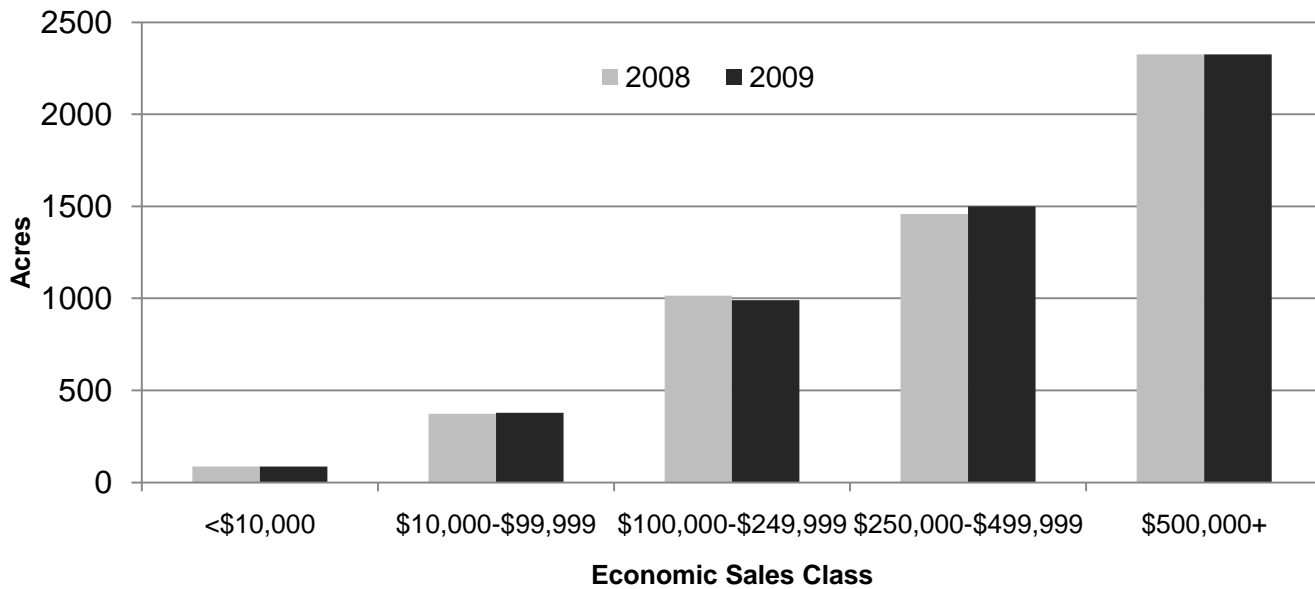
## Number of Farms by Economic Sales Class, United States



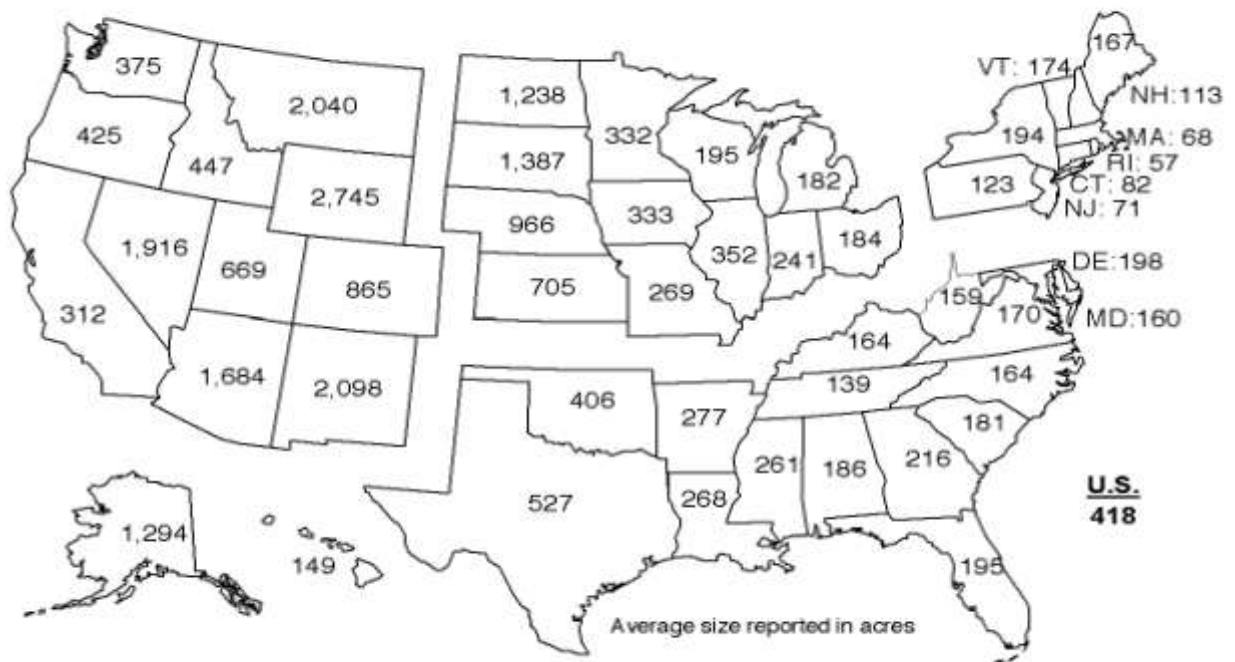
## Change in Farm Numbers Since 2008 by State



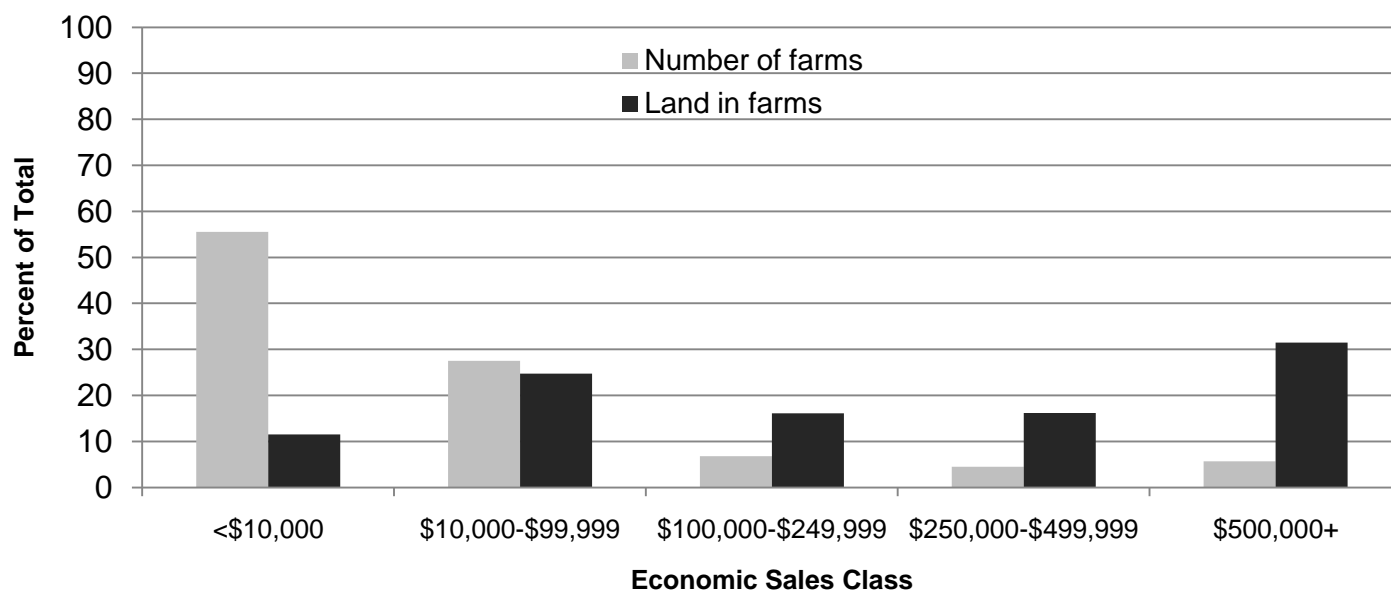
## Average Farm Size by Economic Sales Class, United States



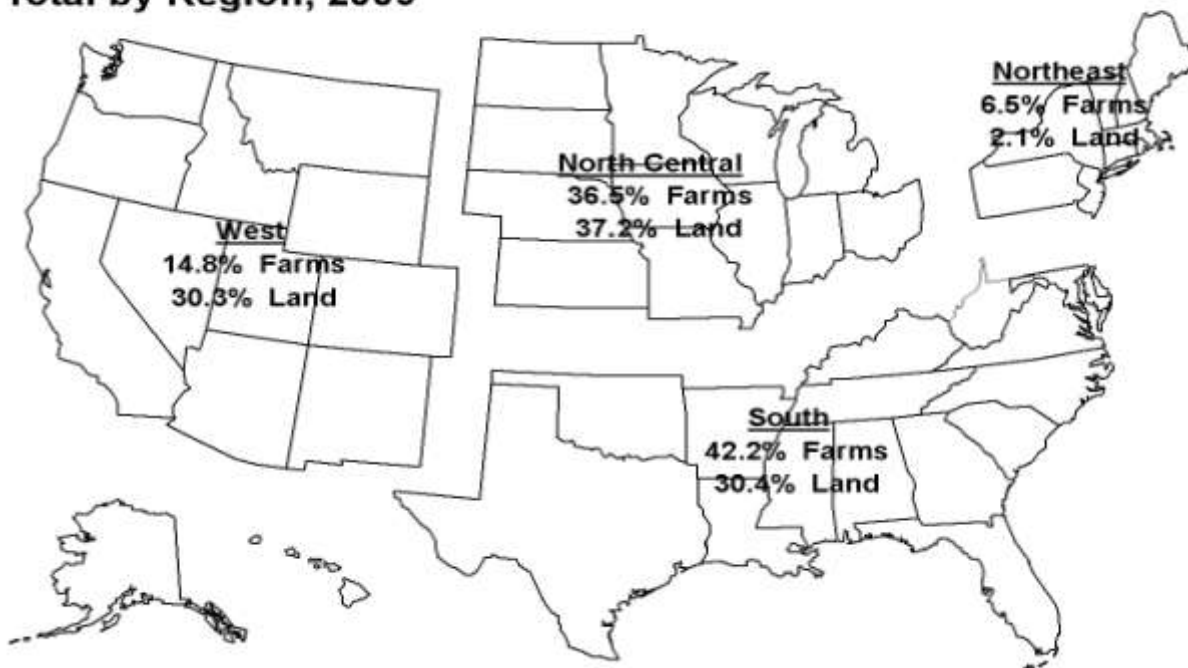
## Average Farm Size by State, 2009



## Farms and Land in Farms by Economic Sales Class, United States

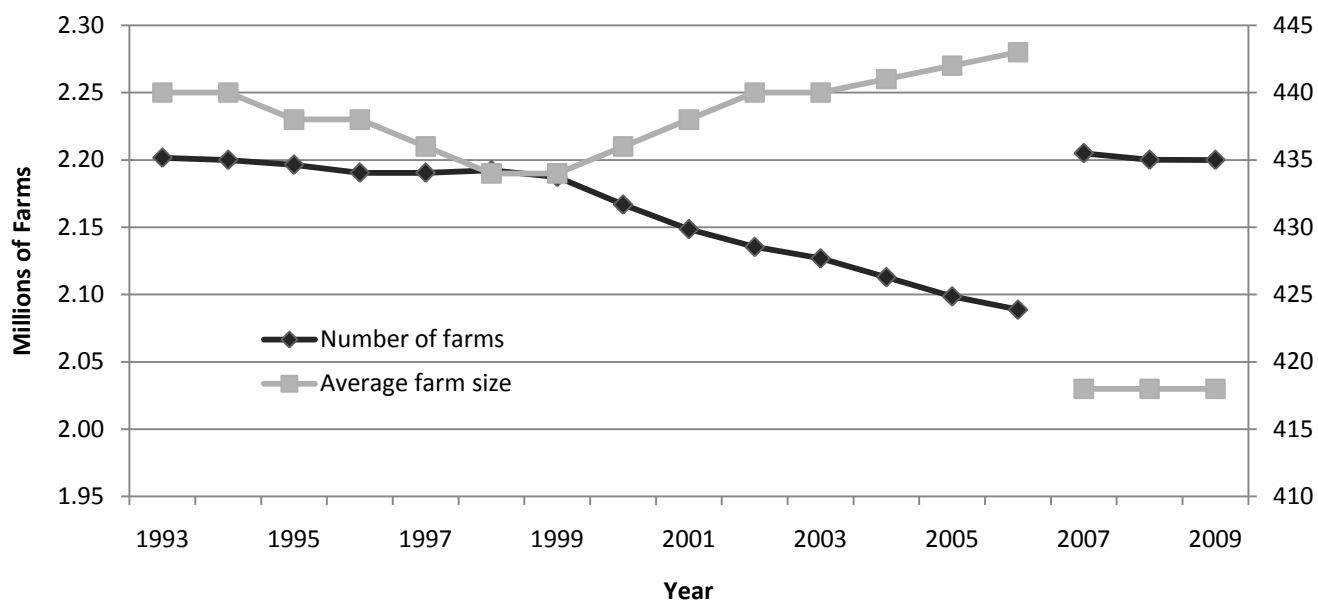


## Number of Farms and Land in Farms Percent of Total by Region, 2009





## Number of Farms and Average Farm Size, United States



### Point farms: United States, 2003 - 2009

Year	Percent of total <sup>1</sup>	
	Farms	Land
2003 .....	18.0	3.0
2004 .....	17.0	2.5
2005 .....	18.0	2.5
2006 .....	19.0	2.7
2007 .....	22.0	3.0
2008 <sup>2</sup> .....	17.0	2.8
2009 .....	18.0	2.9

<sup>1</sup> Percent of farms and land in farms for places having less than \$1,000 of reported sales, but with sufficient crops and/or livestock to normally have sales of at least \$1,000.

<sup>2</sup> Revised.

## Number of Farms, Land in Farms, and Average Farm Size: United States, 1999-2009

Year	Number of farms	Land in farms	Average farm size
	(number)	(1,000 acres)	(acres)
1999 .....	2,187,280	948,460	434
2000 .....	2,166,780	945,080	436
2001 .....	2,148,630	942,070	438
2002 .....	2,135,360	940,300	440
2003 .....	2,126,860	936,750	440
2004 .....	2,112,970	932,260	441
2005 .....	2,098,690	927,940	442
2006 .....	2,088,790	925,790	443
2007 .....	2,204,950	921,460	418
2008 <sup>1</sup> .....	2,200,100	919,910	418
2009 .....	2,200,010	919,800	418

<sup>1</sup> Revised.

## Percent of Farms and Land in Farms, and Average Farm Size: By Economic Sales Class, United States, 2008-2009

Economic sales class	Percent of total				Average farm size (acres)	
	Farms		Land in farms		2008 <sup>1</sup>	2009
	2008 <sup>1</sup>	2009	2008 <sup>1</sup>	2009		
\$1,000 - \$2,499 .....	27.8	28.0	4.0	3.7	60	55
\$2,500 - \$4,999 .....	14.4	14.4	3.3	3.2	96	93
\$5,000 - \$9,999 .....	13.3	13.4	4.3	4.6	135	143
\$10,000 - \$24,999 .....	12.1	11.8	6.8	6.5	235	230
\$25,000 - \$49,999 .....	8.0	8.0	7.4	7.8	387	408
\$50,000 - \$99,999 .....	7.4	7.4	10.3	10.4	582	588
\$100,000 - \$249,999 .....	6.8	6.8	16.4	16.1	1,010	991
\$250,000 - \$499,999 .....	4.5	4.5	15.6	16.2	1,452	1,506
\$500,000 - \$999,999 .....	3.4	3.4	15.4	15.4	1,897	1,895
\$1,000,000 + .....	2.3	2.3	16.5	16.1	3,004	2,936
Total .....	100.0	100.0	100.0	100.0	418	418

<sup>1</sup> Revised.

# Number of Farms, Land in Farms, and Average Farm Size by State, United States, and Puerto Rico 2008-2009

State	Number of farms		Land in farms		Average farm size	
	2008 <sup>1</sup>	2009	2008 <sup>1</sup>	2009	2008 <sup>1</sup>	2009
	(number)	(number)	(1,000 acres)	(1,000 acres)	(acres)	(acres)
Alabama .....	48,500	48,500	8,950	9,000	185	186
Alaska .....	680	680	890	880	1,309	1,294
Arizona .....	15,600	15,500	26,100	26,100	1,673	1,684
Arkansas .....	49,300	49,100	13,700	13,600	278	277
California .....	81,500	81,500	25,400	25,400	312	312
Colorado .....	36,500	36,200	31,300	31,300	858	865
Connecticut .....	4,900	4,900	400	400	82	82
Delaware .....	2,500	2,480	500	490	200	198
Florida .....	47,500	47,500	9,250	9,250	195	195
Georgia .....	47,800	47,600	10,400	10,300	218	216
Hawaii .....	7,500	7,500	1,110	1,120	148	149
Idaho .....	25,200	25,500	11,400	11,400	452	447
Illinois .....	75,900	75,800	26,700	26,700	352	352
Indiana .....	61,000	61,500	14,800	14,800	243	241
Iowa .....	92,600	92,600	30,800	30,800	333	333
Kansas .....	65,500	65,500	46,200	46,200	705	705
Kentucky .....	85,300	85,500	14,000	14,000	164	164
Louisiana .....	30,000	30,000	8,050	8,050	268	268
Maine .....	8,100	8,100	1,350	1,350	167	167
Maryland .....	12,850	12,800	2,050	2,050	160	160
Massachusetts .....	7,700	7,700	520	520	68	68
Michigan .....	55,000	54,800	10,000	10,000	182	182
Minnesota .....	81,000	81,000	26,900	26,900	332	332
Mississippi .....	42,000	42,300	11,000	11,050	262	261
Missouri .....	108,000	108,000	29,100	29,100	269	269
Montana .....	29,500	29,800	60,800	60,800	2,061	2,040
Nebraska .....	47,400	47,200	45,600	45,600	962	966
Nevada .....	3,100	3,080	5,900	5,900	1,903	1,916
New Hampshire .....	4,150	4,150	470	470	113	113
New Jersey .....	10,300	10,300	730	730	71	71
New Mexico .....	20,600	20,500	43,000	43,000	2,087	2,098
New York .....	36,600	36,600	7,100	7,100	194	194
North Carolina .....	52,500	52,400	8,600	8,600	164	164
North Dakota .....	32,000	32,000	39,600	39,600	1,238	1,238
Ohio .....	75,000	74,900	13,900	13,800	185	184
Oklahoma .....	86,600	86,500	35,100	35,100	405	406
Oregon .....	38,600	38,600	16,400	16,400	425	425
Pennsylvania .....	63,200	63,200	7,750	7,750	123	123
Rhode Island .....	1,220	1,220	70	70	57	57
South Carolina .....	26,900	27,000	4,900	4,900	182	181
South Dakota .....	31,300	31,500	43,700	43,700	1,396	1,387
Tennessee .....	79,000	78,700	10,900	10,900	138	139
Texas .....	247,500	247,500	130,400	130,400	527	527
Utah .....	16,500	16,600	11,100	11,100	673	669
Vermont .....	7,000	7,000	1,220	1,220	174	174
Virginia .....	47,000	47,000	8,000	8,000	170	170
Washington .....	39,500	39,500	14,800	14,800	375	375
West Virginia .....	23,200	23,200	3,700	3,700	159	159
Wisconsin .....	78,000	78,000	15,200	15,200	195	195
Wyoming .....	11,000	11,000	30,100	30,200	2,736	2,745
United States .....	2,200,100	2,200,010	919,910	919,800	418	418
Puerto Rico .....	11,200	10,400	470	450	42	43

<sup>1</sup> Revised.

# Number of Farms: Economic Sales Class by State, Region, United States, and Puerto Rico 2008-2009

State and region	Economic sales class					
	\$1,000-\$9,999		\$10,000-\$99,999		\$100,000-\$249,999	
	2008 <sup>1</sup>	2009	2008 <sup>1</sup>	2009	2008 <sup>1</sup>	2009
	(number)	(number)	(number)	(number)	(number)	(number)
<b>Northeast</b>						
Connecticut .....	3,050	3,050	(NA)	(NA)	(NA)	(NA)
Maine .....	5,300	5,300	(NA)	(NA)	(NA)	(NA)
Massachusetts .....	4,800	4,800	(NA)	(NA)	(NA)	(NA)
New Hampshire .....	2,900	2,900	(NA)	(NA)	(NA)	(NA)
New Jersey .....	6,700	6,700	(NA)	(NA)	(NA)	(NA)
New York .....	18,700	18,900	10,800	10,900	3,100	3,200
Pennsylvania .....	37,000	37,000	15,500	15,500	5,600	5,600
Rhode Island .....	740	750	(NA)	(NA)	(NA)	(NA)
Vermont .....	4,000	4,000	(NA)	(NA)	(NA)	(NA)
Other States <sup>2</sup> .....			11,060	10,950	2,220	2,270
<b>Total</b> .....	<b>83,190</b>	<b>83,400</b>	<b>37,360</b>	<b>37,350</b>	<b>10,920</b>	<b>11,070</b>
<b>North Central</b>						
Illinois .....	33,500	32,400	17,400	17,600	8,100	8,500
Indiana .....	31,700	32,800	16,000	15,800	5,150	5,200
Iowa .....	30,200	30,300	28,500	28,400	14,100	14,200
Kansas .....	28,300	28,500	22,500	22,200	6,600	6,700
Michigan .....	32,300	32,100	14,500	14,400	3,600	3,500
Minnesota .....	36,500	36,400	21,900	21,900	9,400	9,400
Missouri .....	57,700	58,100	38,000	37,800	5,700	5,200
Nebraska .....	12,300	11,700	14,200	13,400	7,600	8,600
North Dakota .....	10,600	10,700	9,400	9,300	4,300	4,400
Ohio .....	40,300	40,200	22,700	22,700	5,500	5,300
South Dakota .....	9,400	9,200	9,600	9,800	5,200	5,000
Wisconsin .....	39,000	38,800	20,500	20,500	9,300	9,400
<b>Total</b> .....	<b>361,800</b>	<b>361,200</b>	<b>235,200</b>	<b>233,800</b>	<b>84,550</b>	<b>85,400</b>

See footnote(s) at end of table.

--continued

**Number of Farms: Economic Sales Class by State, Region, United States, and Puerto Rico 2008-2009**  
- Continued

State and region	Economic sales class					
	\$1,000-\$9,999		\$10,000-\$99,999		\$100,000-\$249,999	
	2008 <sup>1</sup>	2009	2008 <sup>1</sup>	2009	2008 <sup>1</sup>	2009
	(number)	(number)	(number)	(number)	(number)	(number)
<b>South</b>						
Alabama .....	31,000	31,200	12,500	12,400	1,300	1,300
Arkansas .....	27,900	27,600	13,200	13,000	1,600	1,700
Delaware .....	1,000	1,000	(NA)	(NA)	(NA)	(NA)
Florida .....	29,500	29,500	12,700	12,700	2,100	2,100
Georgia .....	30,200	30,100	10,000	10,000	2,500	2,500
Kentucky .....	54,000	54,000	25,200	25,400	2,900	3,000
Louisiana .....	18,700	18,700	7,900	7,900	1,100	1,100
Maryland .....	7,100	7,100	(NA)	(NA)	(NA)	(NA)
Mississippi .....	27,400	27,500	9,900	10,100	1,050	950
North Carolina .....	32,700	32,600	11,300	11,300	2,000	2,050
Oklahoma .....	51,000	51,000	28,000	28,000	3,800	3,700
South Carolina .....	19,500	19,600	5,400	5,400	600	600
Tennessee .....	55,900	56,100	19,100	18,400	1,650	1,600
Texas .....	163,800	171,000	65,100	59,000	7,500	7,700
Virginia .....	30,000	29,800	13,300	13,600	1,450	1,300
West Virginia .....	18,400	18,400	(NA)	(NA)	(NA)	(NA)
Other States <sup>3</sup> .....			8,030	7,930	1,210	1,220
<b>Total</b> .....	<b>598,100</b>	<b>605,200</b>	<b>241,630</b>	<b>235,130</b>	<b>30,760</b>	<b>30,820</b>
<b>West</b>						
Alaska .....	360	350	(NA)	(NA)	(NA)	(NA)
Arizona .....	12,000	12,000	(NA)	(NA)	(NA)	(NA)
California .....	35,500	35,600	26,600	26,800	6,500	6,400
Colorado .....	20,600	19,500	10,400	11,300	2,600	2,700
Hawaii .....	4,600	4,600	(NA)	(NA)	(NA)	(NA)
Idaho .....	13,300	13,400	7,000	7,200	1,900	1,700
Montana .....	13,100	13,500	9,400	9,300	3,700	3,500
Nevada .....	1,650	1,650	(NA)	(NA)	(NA)	(NA)
New Mexico .....	13,800	13,700	5,000	5,000	800	840
Oregon .....	24,400	24,400	8,900	9,300	2,300	2,100
Utah .....	10,100	10,200	4,700	4,700	840	840
Washington .....	24,400	24,300	8,900	9,000	2,000	2,000
Wyoming .....	5,200	5,200	(NA)	(NA)	(NA)	(NA)
Other States <sup>4</sup> .....			9,410	9,100	2,130	2,120
<b>Total</b> .....	<b>179,010</b>	<b>178,400</b>	<b>90,310</b>	<b>91,700</b>	<b>22,770</b>	<b>22,200</b>
<b>United States</b> .....	<b>1,222,100</b>	<b>1,228,200</b>	<b>604,500</b>	<b>597,980</b>	<b>149,000</b>	<b>149,490</b>
<b>Puerto Rico</b> .....	<b>7,200</b>	<b>6,800</b>	<b>3,000</b>	<b>2,800</b>	<b>500</b>	<b>400</b>

See footnote(s) at end of table.

--continued

**Number of Farms: Economic Sales Class by State, Region, United States, and Puerto Rico 2008-2009**  
- Continued

State and region	Economic sales class					
	\$250,000-\$499,999		\$500,000 & over		Total	
	2008 <sup>1</sup>	2009	2008 <sup>1</sup>	2009	2008 <sup>1</sup>	2009
	(number)	(number)	(number)	(number)	(number)	(number)
<b>Northeast</b>						
Connecticut .....	(NA)	(NA)	(NA)	(NA)	4,900	4,900
Maine .....	(NA)	(NA)	(NA)	(NA)	8,100	8,100
Massachusetts .....	(NA)	(NA)	(NA)	(NA)	7,700	7,700
New Hampshire .....	(NA)	(NA)	(NA)	(NA)	4,150	4,150
New Jersey .....	(NA)	(NA)	(NA)	(NA)	10,300	10,300
New York .....	1,700	1,600	2,300	2,000	36,600	36,600
Pennsylvania .....	2,800	2,800	2,300	2,300	63,200	63,200
Rhode Island .....	(NA)	(NA)	(NA)	(NA)	1,220	1,220
Vermont .....	(NA)	(NA)	(NA)	(NA)	7,000	7,000
Other States <sup>2</sup> .....	1,220	1,320	1,380	1,330		
<b>Total</b> .....	<b>5,720</b>	<b>5,720</b>	<b>5,980</b>	<b>5,630</b>	<b>143,170</b>	<b>143,170</b>
<b>North Central</b>						
Illinois .....	7,900	8,100	9,000	9,200	75,900	75,800
Indiana .....	3,600	3,200	4,550	4,500	61,000	61,500
Iowa .....	9,800	9,800	10,000	9,900	92,600	92,600
Kansas .....	3,900	3,900	4,200	4,200	65,500	65,500
Michigan .....	2,100	2,200	2,500	2,600	55,000	54,800
Minnesota .....	6,400	6,500	6,800	6,800	81,000	81,000
Missouri .....	2,900	3,100	3,700	3,800	108,000	108,000
Nebraska .....	6,000	6,000	7,300	7,500	47,400	47,200
North Dakota .....	3,700	3,700	4,000	3,900	32,000	32,000
Ohio .....	3,300	3,400	3,200	3,300	75,000	74,900
South Dakota .....	3,900	4,200	3,200	3,300	31,300	31,500
Wisconsin .....	5,200	5,500	4,000	3,800	78,000	78,000
<b>Total</b> .....	<b>58,700</b>	<b>59,600</b>	<b>62,450</b>	<b>62,800</b>	<b>802,700</b>	<b>802,800</b>

See footnote(s) at end of table.

--continued

**Number of Farms: Economic Sales Class by State, Region, United States, and Puerto Rico 2008-2009**  
- Continued

State and region	Economic sales class					
	\$250,000-\$499,999		\$500,000 & over		Total	
	2008 <sup>1</sup>	2009	2008 <sup>1</sup>	2009	2008 <sup>1</sup>	2009
	(number)	(number)	(number)	(number)	(number)	(number)
<b>South</b>						
Alabama .....	1,400	1,400	2,300	2,200	48,500	48,500
Arkansas .....	1,700	1,900	4,900	4,900	49,300	49,100
Delaware .....	(NA)	(NA)	(NA)	(NA)	2,500	2,480
Florida .....	1,100	1,100	2,100	2,100	47,500	47,500
Georgia .....	1,600	1,400	3,500	3,600	47,800	47,600
Kentucky .....	1,400	1,450	1,800	1,650	85,300	85,500
Louisiana .....	800	800	1,500	1,500	30,000	30,000
Maryland .....	(NA)	(NA)	(NA)	(NA)	12,850	12,800
Mississippi .....	900	1,000	2,750	2,750	42,000	42,300
North Carolina .....	2,500	2,450	4,000	4,000	52,500	52,400
Oklahoma .....	1,800	1,800	2,000	2,000	86,600	86,500
South Carolina .....	300	300	1,100	1,100	26,900	27,000
Tennessee .....	950	1,100	1,400	1,500	79,000	78,700
Texas .....	4,500	4,500	6,600	5,300	247,500	247,500
Virginia .....	950	900	1,300	1,400	47,000	47,000
West Virginia .....	(NA)	(NA)	(NA)	(NA)	23,200	23,200
Other States <sup>3</sup> .....	850	860	1,960	1,970		
<b>Total</b> .....	<b>20,750</b>	<b>20,960</b>	<b>37,210</b>	<b>35,970</b>	<b>928,450</b>	<b>928,080</b>
<b>West</b>						
Alaska .....	(NA)	(NA)	(NA)	(NA)	680	680
Arizona .....	(NA)	(NA)	(NA)	(NA)	15,600	15,500
California .....	4,000	4,000	8,900	8,700	81,500	81,500
Colorado .....	1,200	1,100	1,700	1,600	36,500	36,200
Hawaii .....	(NA)	(NA)	(NA)	(NA)	7,500	7,500
Idaho .....	1,200	1,200	1,800	2,000	25,200	25,500
Montana .....	2,100	2,300	1,200	1,200	29,500	29,800
Nevada .....	(NA)	(NA)	(NA)	(NA)	3,100	3,080
New Mexico .....	400	400	600	560	20,600	20,500
Oregon .....	1,200	1,000	1,800	1,800	38,600	38,600
Utah .....	410	400	450	460	16,500	16,600
Washington .....	1,700	1,700	2,500	2,500	39,500	39,500
Wyoming .....	(NA)	(NA)	(NA)	(NA)	11,000	11,000
Other States <sup>4</sup> .....	1,120	1,240	1,410	1,500		
<b>Total</b> .....	<b>13,330</b>	<b>13,340</b>	<b>20,360</b>	<b>20,320</b>	<b>325,780</b>	<b>325,960</b>
<b>United States</b> .....	<b>98,500</b>	<b>99,620</b>	<b>126,000</b>	<b>124,720</b>	<b>2,200,100</b>	<b>2,200,010</b>
<b>Puerto Rico</b> .....	<b>250</b>	<b>200</b>	<b>250</b>	<b>200</b>	<b>11,200</b>	<b>10,400</b>

(NA) Not available.

<sup>1</sup> Revised.

<sup>2</sup> Connecticut, Maine, Massachusetts, New Hampshire, New Jersey, Rhode Island, and Vermont.

<sup>3</sup> Delaware, Maryland, and West Virginia.

<sup>4</sup> Alaska, Arizona, Hawaii, Nevada, and Wyoming.

# Land in Farms: Economic Sales Class by State, Region, United States, and Puerto Rico 2008-2009

State and region	Economic sales class					
	\$1,000-\$9,999		\$10,000-\$99,999		\$100,000-\$249,999	
	2008 <sup>1</sup>	2009	2008 <sup>1</sup>	2009	2008 <sup>1</sup>	2009
	(1,000 acres)	(1,000 acres)	(1,000 acres)	(1,000 acres)	(1,000 acres)	(1,000 acres)
Northeast .....						
Connecticut .....	130	130	(NA)	(NA)	(NA)	(NA)
Maine .....	480	480	(NA)	(NA)	(NA)	(NA)
Massachusetts .....	210	210	(NA)	(NA)	(NA)	(NA)
New Hampshire .....	230	230	(NA)	(NA)	(NA)	(NA)
New Jersey .....	180	180	(NA)	(NA)	(NA)	(NA)
New York .....	1,400	1,500	1,700	1,800	960	960
Pennsylvania .....	2,400	2,400	2,050	2,050	1,150	1,150
Rhode Island .....	30	30	(NA)	(NA)	(NA)	(NA)
Vermont .....	340	340	(NA)	(NA)	(NA)	(NA)
Other States <sup>2</sup> .....			1,260	1,250	490	500
Total .....	5,400	5,500	5,010	5,100	2,600	2,610
North Central .....						
Illinois .....	1,500	1,300	2,300	2,200	3,300	3,400
Indiana .....	1,300	1,300	2,100	2,200	1,900	1,900
Iowa .....	1,700	1,600	4,700	4,800	5,400	5,400
Kansas .....	3,200	3,300	9,900	9,600	8,300	8,300
Michigan .....	1,800	1,700	2,000	1,900	1,400	1,300
Minnesota .....	3,200	3,100	4,800	4,800	4,200	4,200
Missouri .....	5,000	4,900	10,400	10,400	3,900	3,400
Nebraska .....	1,400	1,300	6,200	6,200	8,300	8,200
North Dakota .....	2,000	1,800	6,200	6,200	6,900	6,900
Ohio .....	2,000	1,950	3,200	3,200	2,200	2,200
South Dakota .....	1,600	1,500	7,300	7,400	9,400	9,300
Wisconsin .....	2,700	2,400	3,300	3,200	2,700	2,700
Total .....	27,400	26,150	62,400	62,100	57,900	57,200

See footnote(s) at end of table.

--continued



**Land in Farms: Economic Sales Class by State, Region, United States, and Puerto Rico 2008-2009 - Continued**

State and region	Economic sales class					
	\$1,000-\$9,999		\$10,000-\$99,999		\$100,000-\$249,999	
	2008 <sup>1</sup>	2009	2008 <sup>1</sup>	2009	2008 <sup>1</sup>	2009
	(1,000 acres)	(1,000 acres)	(1,000 acres)	(1,000 acres)	(1,000 acres)	(1,000 acres)
South .....						
Alabama .....	3,000	3,100	3,100	3,100	800	800
Arkansas .....	2,300	2,100	3,150	3,200	950	1,100
Delaware .....	30	30	(NA)	(NA)	(NA)	(NA)
Florida .....	1,400	1,400	1,950	1,950	900	900
Georgia .....	3,200	3,100	2,350	2,500	1,000	1,000
Kentucky .....	4,400	4,400	5,010	4,900	1,320	1,400
Louisiana .....	1,400	1,400	1,950	1,950	900	900
Maryland .....	400	400	(NA)	(NA)	(NA)	(NA)
Mississippi .....	3,500	3,400	2,600	2,650	1,000	900
North Carolina .....	2,000	2,000	1,650	1,600	800	800
Oklahoma .....	6,000	6,000	12,600	12,600	6,100	6,000
South Carolina .....	1,900	1,800	1,200	1,300	400	400
Tennessee .....	3,750	3,800	3,700	3,600	900	800
Texas .....	18,800	19,500	43,500	44,000	20,800	18,400
Virginia .....	2,300	2,200	2,900	3,000	900	800
West Virginia .....	1,920	1,900	(NA)	(NA)	(NA)	(NA)
Other States <sup>3</sup> .....			1,840	1,800	530	540
Total .....	56,300	56,530	87,500	88,150	37,300	34,740
West .....						
Alaska .....	270	270	(NA)	(NA)	(NA)	(NA)
Arizona .....	750	750	(NA)	(NA)	(NA)	(NA)
California .....	1,800	1,800	5,000	4,900	3,600	3,700
Colorado .....	2,700	2,600	8,400	9,400	5,900	5,800
Hawaii .....	80	80	(NA)	(NA)	(NA)	(NA)
Idaho .....	950	1,000	2,400	2,200	1,950	1,900
Montana .....	2,500	2,500	12,000	12,000	15,400	15,400
Nevada .....	200	200	(NA)	(NA)	(NA)	(NA)
New Mexico .....	3,000	3,000	11,300	11,300	8,400	8,500
Oregon .....	1,700	1,600	3,400	3,600	3,100	3,200
Utah .....	850	900	2,250	2,300	1,500	1,400
Washington .....	1,300	1,300	3,100	3,100	1,800	1,800
Wyoming .....	1,500	1,300	(NA)	(NA)	(NA)	(NA)
Other States <sup>4</sup> .....			22,550	22,750	11,850	11,750
Total .....	17,600	17,300	70,400	71,550	53,500	53,450
United States .....	106,700	105,480	225,310	226,900	151,300	148,000
Puerto Rico .....	120	120	160	155	70	65

See footnote(s) at end of table.

--continued

**Land in Farms: Economic Sales Class by State, Region, United States, and Puerto Rico 2008-2009 - Continued**

State and region	Economic sales class					
	\$250,000-\$499,999		\$500,000 & over		Total	
	2008 <sup>1</sup>	2009	2008 <sup>1</sup>	2009	2008 <sup>1</sup>	2009
	(1,000 acres)	(1,000 acres)	(1,000 acres)	(1,000 acres)	(1,000 acres)	(1,000 acres)
<b>Northeast</b>						
Connecticut .....	(NA)	(NA)	(NA)	(NA)	400	400
Maine .....	(NA)	(NA)	(NA)	(NA)	1,350	1,350
Massachusetts .....	(NA)	(NA)	(NA)	(NA)	520	520
New Hampshire .....	(NA)	(NA)	(NA)	(NA)	470	470
New Jersey .....	(NA)	(NA)	(NA)	(NA)	730	730
New York .....	850	810	2,190	2,030	7,100	7,100
Pennsylvania .....	950	950	1,200	1,200	7,750	7,750
Rhode Island .....	(NA)	(NA)	(NA)	(NA)	70	70
Vermont .....	(NA)	(NA)	(NA)	(NA)	1,220	1,220
Other States <sup>2</sup> .....	445	455	965	955		
<b>Total</b> .....	<b>2,245</b>	<b>2,215</b>	<b>4,355</b>	<b>4,185</b>	<b>19,610</b>	<b>19,610</b>
<b>North Central</b>						
Illinois .....	4,800	4,800	14,800	15,000	26,700	26,700
Indiana .....	2,500	2,500	7,000	6,900	14,800	14,800
Iowa .....	6,900	6,900	12,100	12,100	30,800	30,800
Kansas .....	8,400	8,200	16,400	16,800	46,200	46,200
Michigan .....	1,400	1,500	3,400	3,600	10,000	10,000
Minnesota .....	4,800	4,800	9,900	10,000	26,900	26,900
Missouri .....	3,200	3,400	6,600	7,000	29,100	29,100
Nebraska .....	9,100	9,700	20,600	20,200	45,600	45,600
North Dakota .....	8,200	8,400	16,300	16,300	39,600	39,600
Ohio .....	2,400	2,350	4,100	4,100	13,900	13,800
South Dakota .....	10,400	10,300	15,000	15,200	43,700	43,700
Wisconsin .....	2,600	2,800	3,900	4,100	15,200	15,200
<b>Total</b> .....	<b>64,700</b>	<b>65,650</b>	<b>130,100</b>	<b>131,300</b>	<b>342,500</b>	<b>342,400</b>

See footnote(s) at end of table.

--continued

**Land in Farms: Economic Sales Class by State, Region, United States, and Puerto Rico 2008-2009 - Continued**

State and region	Economic sales class					
	\$250,000-\$499,999		\$500,000 & over		Total	
	2008 <sup>1</sup>	2009	2008 <sup>1</sup>	2009	2008 <sup>1</sup>	2009
	(1,000 acres)	(1,000 acres)	(1,000 acres)	(1,000 acres)	(1,000 acres)	(1,000 acres)
<b>South</b>						
Alabama .....	700	700	1,350	1,300	8,950	9,000
Arkansas .....	1,400	1,300	5,900	5,900	13,700	13,600
Delaware .....	(NA)	(NA)	(NA)	(NA)	500	490
Florida .....	900	900	4,100	4,100	9,250	9,250
Georgia .....	950	900	2,900	2,800	10,400	10,300
Kentucky .....	1,020	1,100	2,250	2,200	14,000	14,000
Louisiana .....	900	900	2,900	2,900	8,050	8,050
Maryland .....	(NA)	(NA)	(NA)	(NA)	2,050	2,050
Mississippi .....	900	1,000	3,000	3,100	11,000	11,050
North Carolina .....	1,150	1,200	3,000	3,000	8,600	8,600
Oklahoma .....	4,300	4,400	6,100	6,100	35,100	35,100
South Carolina .....	300	300	1,100	1,100	4,900	4,900
Tennessee .....	800	900	1,750	1,800	10,900	10,900
Texas .....	15,300	20,500	32,000	28,000	130,400	130,400
Virginia .....	650	650	1,250	1,350	8,000	8,000
West Virginia .....	(NA)	(NA)	(NA)	(NA)	3,700	3,700
Other States <sup>3</sup> .....	430	420	1,100	1,150		
<b>Total</b> .....	<b>29,700</b>	<b>35,170</b>	<b>68,700</b>	<b>64,800</b>	<b>279,500</b>	<b>279,390</b>
<b>West</b>						
Alaska .....	(NA)	(NA)	(NA)	(NA)	890	880
Arizona .....	(NA)	(NA)	(NA)	(NA)	26,100	26,100
California .....	2,900	2,900	12,100	12,100	25,400	25,400
Colorado .....	5,600	5,400	8,700	8,100	31,300	31,300
Hawaii .....	(NA)	(NA)	(NA)	(NA)	1,110	1,120
Idaho .....	1,300	1,200	4,800	5,100	11,400	11,400
Montana .....	14,400	14,400	16,500	16,500	60,800	60,800
Nevada .....	(NA)	(NA)	(NA)	(NA)	5,900	5,900
New Mexico .....	7,700	7,700	12,600	12,500	43,000	43,000
Oregon .....	2,600	2,400	5,600	5,600	16,400	16,400
Utah .....	1,200	1,100	5,300	5,400	11,100	11,100
Washington .....	2,800	2,800	5,800	5,800	14,800	14,800
Wyoming .....	(NA)	(NA)	(NA)	(NA)	30,100	30,200
Other States <sup>4</sup> .....	8,400	8,500	18,500	18,600		
<b>Total</b> .....	<b>46,900</b>	<b>46,400</b>	<b>89,900</b>	<b>89,700</b>	<b>278,300</b>	<b>278,400</b>
<b>United States</b> .....	<b>143,545</b>	<b>149,435</b>	<b>293,055</b>	<b>289,985</b>	<b>919,910</b>	<b>919,800</b>
<b>Puerto Rico</b> .....	<b>40</b>	<b>40</b>	<b>80</b>	<b>70</b>	<b>470</b>	<b>450</b>

(NA) Not available.

<sup>1</sup> Revised.

<sup>2</sup> Connecticut, Maine, Massachusetts, New Hampshire, New Jersey, Rhode Island, and Vermont.

<sup>3</sup> Delaware, Maryland, and West Virginia.

<sup>4</sup> Alaska, Arizona, Hawaii, Nevada, and Wyoming.

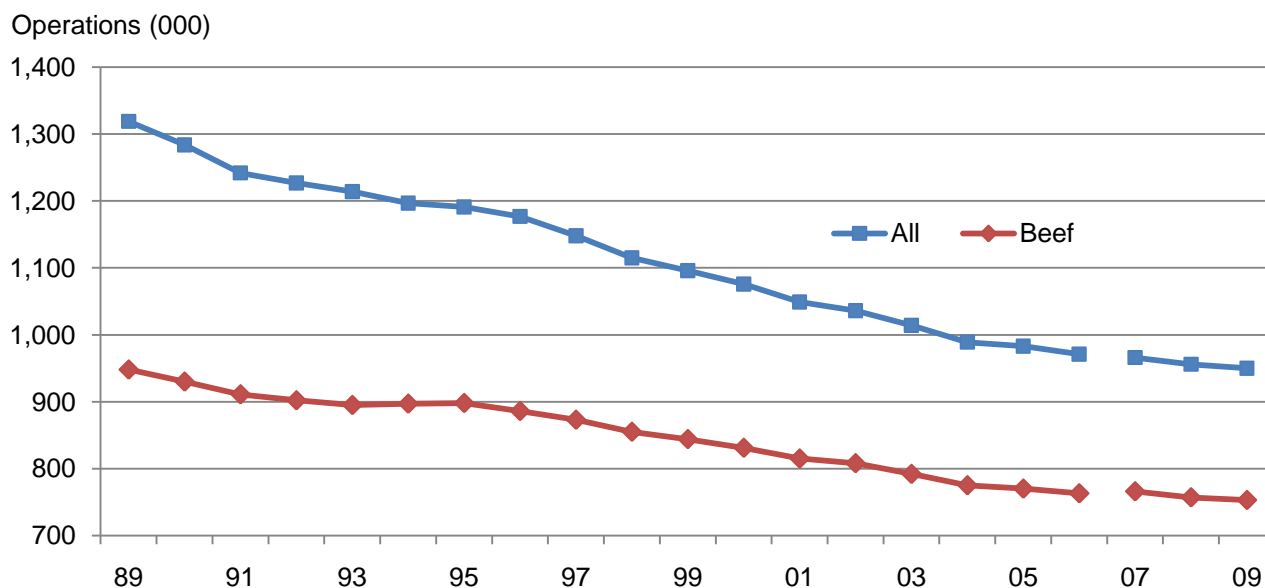
# Cattle and Calves: Number of Operations and Percent of Inventory by Size Group, United States, 2008-2009

Head	Operations		Percent of inventory	
	2008 <sup>1</sup>	2009	2008 <sup>1</sup>	2009
	(number)	(number)	(percent)	(percent)
Cattle and calves .....				
1-49 .....	645,000	642,000	11.4	11.4
50-99 .....	133,000	132,000	9.7	9.7
100-499 .....	147,600	146,300	31.2	31.2
500-999 .....	19,100	19,000	13.4	13.5
1,000-1,999 .....	6,600	6,500	9.1	9.0
2,000-4,999 .....	3,030	3,010	8.8	8.8
5,000-9,999 .....	700	720	4.7	4.8
10,000-19,999 .....	260	270	3.5	3.7
20,000+ .....	210	200	8.2	7.9
Total .....	955,500	950,000	100.0	100.0
Beef cows <sup>2</sup> .....				
1-49 .....	601,000	598,000	28.5	28.3
50-99 .....	83,000	82,000	17.1	17.1
100-499 .....	67,200	67,200	38.0	38.0
500-999 .....	4,340	4,350	8.7	8.8
1,000-1,999 .....	1,125	1,110	4.5	4.5
2,000-4,999 .....	280	280	2.1	2.1
5,000+ .....	55	60	1.1	1.2
Total .....	757,000	753,000	100.0	100.0

<sup>1</sup> Revised.

<sup>2</sup> Included in operations with cattle.

## Number of All Cattle and Beef Cow Operations, United States



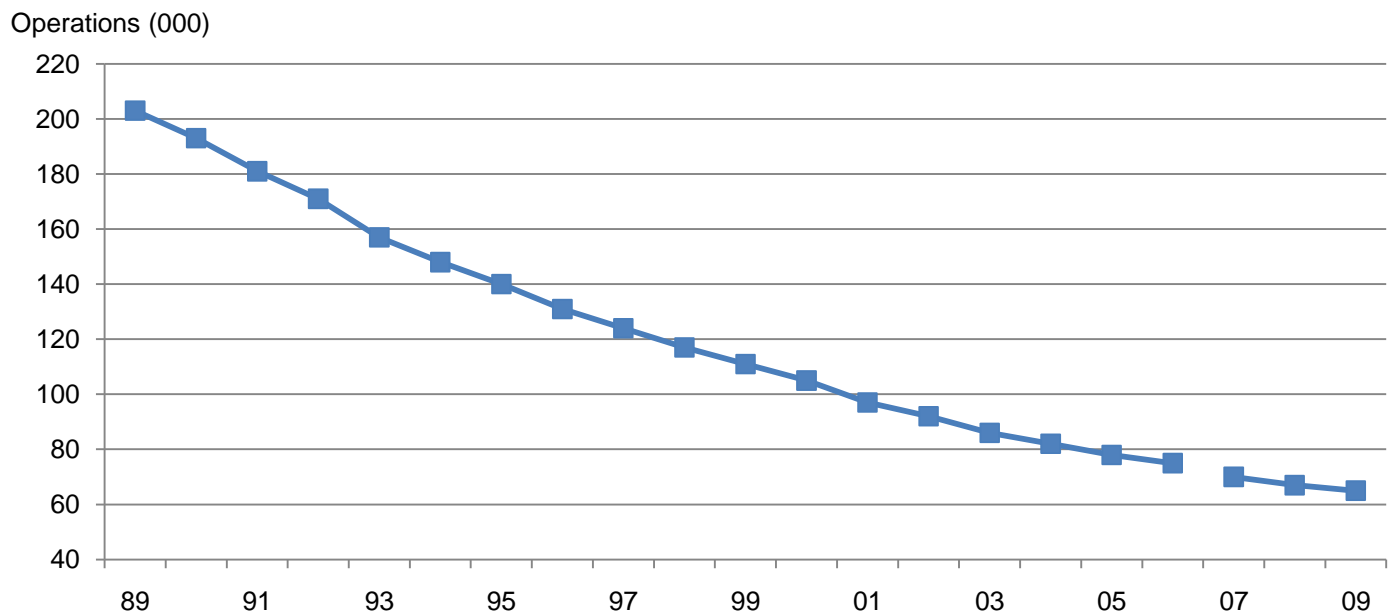
## Milk Cows: Number of Operations, Percent of Inventory, and Percent of Milk Production by Size Group, United States, 2008-2009

Head	Operations <sup>1</sup>		Percent of inventory		Percent of production <sup>2</sup>	
	2008	2009	2008	2009	2008	2009
	(number)	(number)	(percent)	(percent)	(percent)	(percent)
1-29 .....	21,300	20,400	1.8	1.8	1.2	1.2
30-49 .....	11,900	11,500	5.1	4.9	3.9	3.8
50-99 .....	17,800	17,300	13.1	13.0	11.5	11.4
100-199 .....	8,700	8,600	12.5	12.4	11.8	11.6
200-499 .....	3,950	3,850	12.6	12.3	13.1	12.5
500-999 .....	1,720	1,700	12.5	12.5	12.5	12.6
1,000-1,999 .....	900	910	13.1	13.3	15.5	15.7
2,000+ .....	730	740	29.3	29.8	30.5	31.2
Total .....	67,000	65,000	100.0	100.0	100.0	100.0

<sup>1</sup> Included in operations with cattle.

<sup>2</sup> Estimates reflect the average distributions of various probability surveys conducted during the year.

## Number of Milk Cow Operations, United States



## Hogs and Pigs: Number of Operations and Percent of Inventory by Size Group, United States, 2008-2009

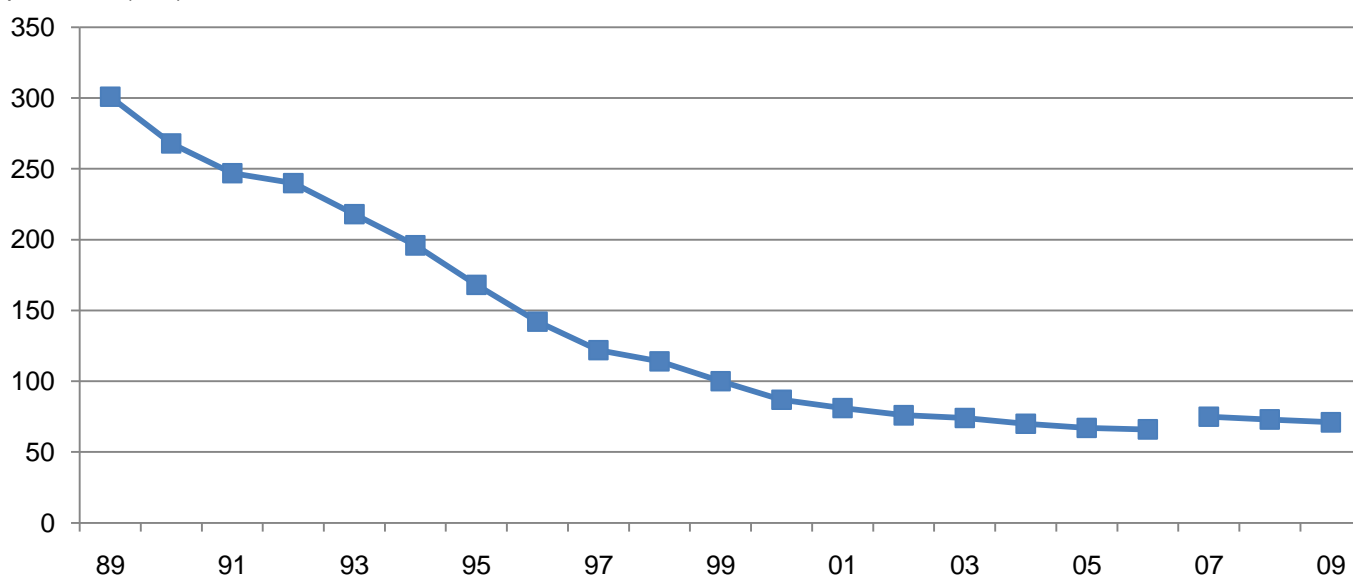
Head	Operations		Percent of inventory	
	2008	2009	2008	2009
	(number)	(number)	(percent)	(percent)
1-99 .....	50,680	50,400	0.9	0.9
100-499 .....	6,740	6,100	2.5	2.3
500-999 .....	3,490	3,200	3.5	3.3
1,000-1,999 .....	3,950	3,550	8.0	7.5
2,000-4,999 .....	5,370	5,250	24.0	24.0
5,000+ .....	2,920	2,950	61.1	62.0
Total .....	73,150	71,450	100.0	100.0

## Hogs and Pigs: Number of Operations and Percent of Inventory by Size Group, Based on Ownership, United States, 2008-2009

Head	Operations		Percent of inventory	
	2008	2009	2008	2009
	(number)	(number)	(percent)	(percent)
1-99 .....	50,610	50,370	1.0	0.9
100-499 .....	5,870	5,370	2.4	2.2
500-999 .....	2,380	2,050	2.4	2.2
1,000-1,999 .....	2,160	1,900	4.5	4.0
2,000-4,999 .....	2,350	2,200	10.7	9.7
5,000-9,999 .....	705	745	7.4	8.0
10,000-19,999 .....	365	350	7.4	7.3
20,000-49,999 .....	185	185	8.5	9.0
50,000+ .....	135	130	55.7	56.7
Total .....	64,760	63,300	100.0	100.0

## Number of Hog Operations, United States

Operations (000)



## Sheep and Goat Operations: Number of Operations with Sheep or Goats, United States, 2008-2009

Commodity	2008 <sup>1</sup>	2009
	(number)	(number)
Sheep .....	82,500	82,000
Angora Goats .....	6,500	5,400
Milk Goats .....	29,000	30,000
Meat and Other Goats .....	129,000	130,000
All Goats .....	150,000	152,000

<sup>1</sup> Revised.

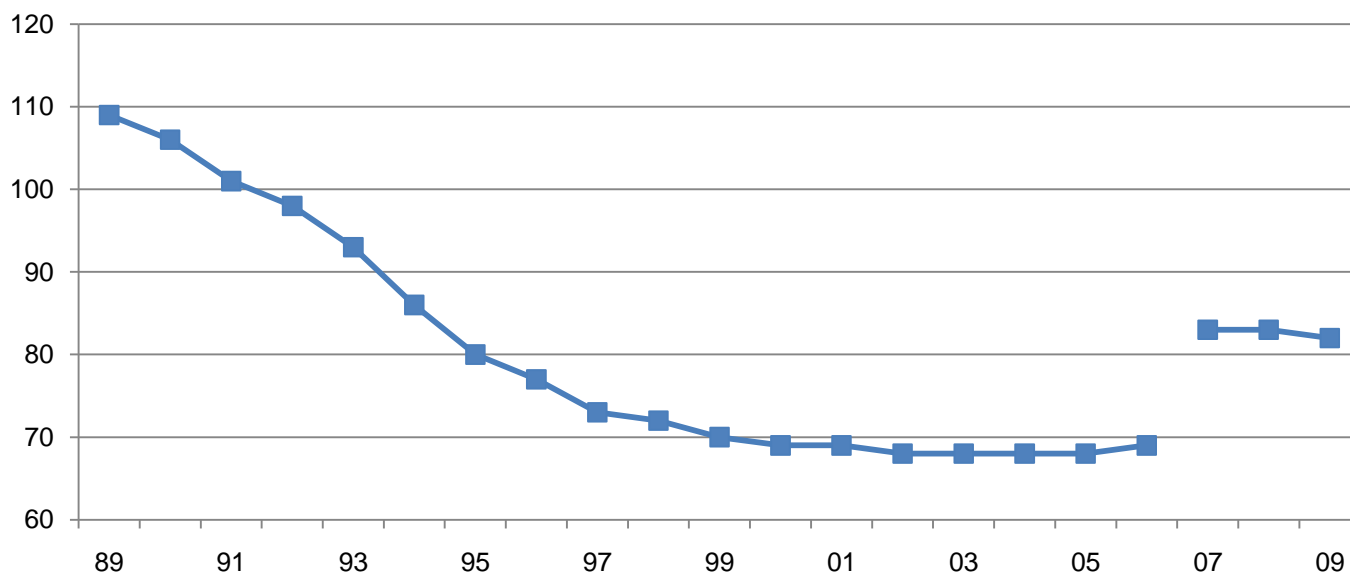
## Breeding Sheep: Survey Percent by Size Group, United States, 2008-2009

[Percents reflect distributions from the January annual survey]

Item	1-99 head		100-499 head		500-4,999 head		5,000+ head	
	2008	2009	2008	2009	2008	2009	2008	2009
Operations	92.5	93.7	6.2	5.2	1.2	1.0	0.1	0.1
Inventory	32.6	36.2	22.7	20.8	30.2	31.3	14.5	11.7

## Number of Sheep Operations, United States

Operations (000)



## Reliability of Farm Numbers and Land in Farms Data in this Report

**Survey Procedures:** Data are collected by the National Agricultural Statistics Service (NASS) during the June Agricultural Survey using sampling procedures to ensure every farm and ranch has a chance of being selected. NASS uses a multiple sampling frame approach to count farms and measure land in farms. An Area Sampling Frame that divides all land into segments is built for every State. A sample of segments is selected in each State and enumerated in early June. Highly trained interviewers locate each sampled segment and identify every farm and ranch operating land in the segment and the number of acres in each operation.

These data are used to compute summary indications of farm numbers and acres of land in farms. Additionally, all farms found in the segments are checked against a list of farms and ranches maintained by NASS to determine if the farm is on the list. Operations found in the Area Frame sample that are not on the list provide a measure of incompleteness of the list. The summarized totals for these non-overlap (or not-on-list) operations are combined with summarized totals collected from a sample selected from the list to calculate additional indications of farms and land in farms.

**Estimation Procedures:** Data are checked for reasonableness and consistency and summarized for each state. State estimates are aggregated to regional and national totals for Headquarters review. Field Offices perform a thorough review of their survey results and historical data relationships and recommend official estimates. Headquarters establishes regional and national estimates and ensures that state estimates are in balance with the Regional and National numbers.

**Revision Policy:** Estimates are subject to revision the following year and following review of the five-year Census of Agriculture. The basis for revision must be supported by additional data which directly affects the level of the estimate.

**Reliability:** Two types of errors, sampling and non-sampling, are possible in an estimate based on a sample survey. Both types can affect the quality of the estimates.

Sampling error occurs because a complete census is not taken. The sampling error measures the variation in estimates from the average of all possible samples. An estimate of 100 with a sampling error of 1 would mean that chances are 19 out of 20 that the estimates from all possible samples averaged together would be between 98 and 102; which is the survey estimate, plus or minus two times the sampling error. The sampling error expressed as a percent of the estimate is called the relative sampling error. The relative sampling error for the U.S. number of farms and land in farms is 1.3 and 1.4 percent respectively. The sampling error for total number of farms and total land in farms is less than the sampling error for each component of the total, such as number of farms by economic sales class. Relative sampling errors by economic sales class generally ranged from 1.8 to 3.4 percent for number of farms and 2.1 to 6.8 percent for land in farms at the U.S. level.

Non-sampling errors can occur in complete censuses as well as sample surveys. They are caused by the inability to obtain correct information from each person surveyed, differences in interpreting questions or definitions, and mistakes in coding or processing the data. Special efforts are taken at each step of the survey to minimize non-sampling errors.



## Terms and Definitions

A **farm** is “any place from which \$1,000 or more of agricultural products were produced and sold, or normally would have been sold, during the year”. Government payments are included in sales. Ranches, institutional farms, experimental and research farms, and Indian Reservations are included as farms. Places with the entire acreage enrolled in the Conservation Reserve Program (CRP), Wetlands Reserve Program (WRP), or other government programs are counted as farms.

The definition of a farm was first established in 1850 and has changed nine times since. The current definition was first used for the 1974 Census.

**Land in farms** consists of agricultural land used for crops, pasture, or grazing. Also included is woodland and wasteland not actually under cultivation or used for pasture or grazing, provided it was part of the farm operator’s total operation. Land in farms includes acres in the Conservation Reserve, Wetlands Reserve Programs, or other government programs.

Land in farms includes land owned and operated as well as land rented from others. Land used rent-free is included as land rented from others. All grazing land, except land used under government permits on a per-head basis, is included as land in farms provided it was part of a farm or ranch. Land under the exclusive use of a grazing association is reported by the grazing association and included as land in farms. All land in American Indian reservations used for growing crops or grazing livestock is included as land in farms. Land in reservations not reported by individual American Indians or non-Native Americans is reported in the name of the cooperative group that used the land. In many instances, the entire American Indian reservation is reported as one farm.

**Economic sales classes** are based on the gross value of agricultural products sold. Government program payments are also included.

**Point Farms** are places that did not have \$1,000 of reported sales for the year, but had sufficient crops and livestock to normally have sales of \$1,000 or more.

A **cattle operation** is any place having one or more head of cattle on hand on December 31.

A **beef cow operation** is any place having one or more head of beef cows on hand on December 31.

A **milk cow operation** is any place having one or more head of milk cows on hand on December 31.

A **hogs and pigs operation** is any place having one or more hog or pig on hand on December 31.

A **sheep and lamb operation** is any place having one or more head of sheep or lambs on hand on December 31.

A **goat and kid operation** is any place having one or more head of goats or kids on hand on December 31.

## Farm Definition History

The definition of a farm has remained the same since 1974. Activities included as agriculture, however, have undergone modification in recent years. Beginning in 1995, operations having 5 or more horses or ponies and no other agricultural sales were counted as horse farms. An operation with 1 or more horses with agricultural sales of at least \$1,000, qualified as a farm. Two industries, maple syrup and short rotation woody crop farms, were added beginning in 1997 as a result of the new North American Industry Classification System (NAICS). These changes were made to achieve comparability with the Census of Agriculture farm definition. All the changes in the farm definition beginning in 1995 were carried back to 1993 and included in the 1993-1998 estimates. These changes bring comparability between the Census of Agriculture data and the annually published NASS estimates. Because of these changes in the farm definition, the official estimates show a level difference in the number of farms between 1992 and 1993 in some states. To further align the counting of farms with the Census of Agriculture, places with 100 acres or more of pasture only in 2002 were included in farm and land in farm numbers. The handling of Indian reservation land was changed in 2002 to provide some accounting for individual farms.

### Minimum Criteria for "FARM" Definition, 1840 - Present and Enumeration of Apiaries and Fur Farms

Year	Acres in Place	Value of Agricultural Products (Produced)	Value of Sales of Agricultural Products	Required some Agricultural Operations	Apiaries and Fur Farms Enumerated
1974 - Present	--	--	\$1,000 or more	--	--
1959	Less than 10 10 or more	-- --	\$250 or more \$50 or more	-- --	-- --
1954	Less than 3 3 or more	-- \$150 or more	\$150 or more --	-- --	-- --
1950	Less than 3 3 or more	-- \$150 or more	\$150 or more --	-- --	Apiaries Fur Farms
1935 - 1945	Less than 3 3 or more	\$250 or more --	-- --	-- X	Apiaries Fur Farms
1930	Less than 3 3 or more	\$250 or more --	-- --	-- X	Apiaries --
1925	Less than 3 3 or more	\$250 or more --	-- --	-- X	-- --
1910 - 1925	Less than 3 3 or more	\$250 or more --	-- --	-- X	Apiaries --
1900	Less than 3 3 or more	-- --	-- --	-- X	Apiaries --
1870 - 1890	Less than 3 3 or more	-- --	\$500 or more --	-- X	Apiaries --
1860	--	--	--	--	--
1850	--	\$100 or more	--	--	Apiaries
1840	--	--	--	--	--

**Historic Estimates:** Final estimates of Farms and Land in Farms in earlier years are available in Statistical Bulletins, No. 991 for 1998-2002, No. 955 for 1993-97, No. 895 for 1988-92, No. 792 for 1979-87, SpSy3 for 1975-80, No. 594 for

1969-75, No. 507 for 1959-70, No. 316 for number of farm estimates for 1910-59 and land in farms estimates for 1950-59.

## Special Note Regarding the 2007 Estimates

**Census:** The Farms, Land in Farms, and Livestock Operations publication is produced annually. The purpose of this publication is to provide annual estimates of Farms, Land in Farms, and Operations with Livestock. It also provides revisions, as necessary, to previous year estimates. The Census of Agriculture, conducted every five years provides a base from which the annual surveys measure the change from that base. At the end of the next five year cycle, the annual estimates are revised based on inter-census trends.

The 2007 Census of Agriculture showed a significant increase in the number of farms, and reversed the downward trend that was shown in the annual estimates of Farm Numbers since the 2002 Census of Agriculture. NASS believes that some of the increase is due to methodological changes that allowed NASS to more accurately count small farms in the 2007 Census. This is discussed in more detail below.

**Methodological Discussion:** Each year NASS conducts the June Area Frame Survey (AFS) to provide an estimate of the number of farms and the land in farms. The exception is Alaska, which does not have an area frame and uses a list survey instead. The area frame is stratified by land use. A sample of approximately 11,000 segments of land (each approximately one square mile in size) is selected, and field enumerators visit each sampled segment to identify agricultural activity within the segment. The AFS is assumed to provide complete coverage of the universe of farm and ranch operations because the area-based frame covers all land in the U.S.

In preparation for the census of agriculture, NASS builds the Census Mail List (CML) consisting of all known farms and potential farms. In addition, NASS uses the area frame sample to measure and account for the incompleteness of the CML in a dual-frame estimation procedure. This dual-frame estimation procedure assumes complete coverage of the universe of farm and ranch operations because the undercoverage of the CML is accounted for through the area frame sample.

Results from the 2002 Census of Agriculture indicated undercoverage of farms in the lowest value of sales categories. This category includes a high concentration of disadvantaged and minority farm operators. In preparation for the 2007 Census, NASS exerted more extensive efforts than in previous censuses to build a comprehensive list. Additionally, NASS worked with several community based organizations and producer groups to enhance awareness, to increase response, and to improve coverage of these types of farms. This resulted in a 2007 CML with 3,194,373 records as compared with 2,841,788 in 2002. Additionally, NASS augmented the area frame sample with segments that were located in areas where small and minority operated farms were likely to be located.

The 2007 Census of Agriculture produced a greater number of farms in the lowest value of sales categories. The extensive list building efforts and the augmentation of the area frame sample allowed NASS to capture more of the small farms with less than \$10,000 in value of agricultural sales. Additionally, 2007 was a year of relatively high commodity prices. As the value of farm commodities increased, more very small operations are able to meet the \$1,000 value of sales threshold to qualify as a farm in the census.

After the 2007 Census of Agriculture NASS conducted a classification error research study for the census in five states. The study used data from the 2007 AFS and the 2007 census to examine whether there were farms incorrectly classified as nonfarms, and whether there were any nonfarms incorrectly classified as farms. Records in the 2007 AFS were matched to the 2007 census using probabilistic record linkage. Records whose farm status differed in the two data collections were interviewed to determine which data source was correct.

Results of the study showed that where there were discrepancies in farm status between the two reports, the census data was more often correct than the AFS data. Some AFS farms had not been correctly classified by the enumeration and processing procedures. These results challenged the NASS assumption made for its annual estimates that all farms are captured using the AFS estimation procedures. This assumption had been made on the basis of the completeness of the frame, the high quality of the personal enumeration mode utilized for the data collection, and the extensive training of field enumerators collecting the data. However, the more extensive census procedures using dual-frame estimation produced a larger farm count than the AFS estimation. This result and the results of the research study provided evidence that the AFS procedure is underestimating the number of farms. Because the AFS estimate is the major indicator for producing annual farm number estimates, it is likely these farms were also underestimated in the non census years.

The 2007- 2009 farm number estimates reflect adjustments in the number of farms based on estimates produced by the 2007 Census of Agriculture. NASS has launched a research initiative to address the methodological issues discussed above.

## Information Contacts

Listed below are the commodity statisticians in the Economics Section of the Environmental, Economics, and Demographics Branch of the National Agricultural Statistics Service to contact for additional information. E-mail inquiries may be sent to [nass@nass.usda.gov](mailto:nass@nass.usda.gov).

Kevin Barnes, Chief, Environmental, Economics, and Demographics Branch ..... (202) 720-6146

Kevin Hintzman, Head, Economics Section ..... (202) 690-3223

Richard Barton – ARMS ..... (202) 690-1052

Daryl Brinkman – Prices Received, Prices Received Indexes ..... (202) 720-8844

Kuan Chen – Prices, Prices Research..... (202) 720-5446

Angie Considine – Cash Rents..... (202) 720-2250

Mark Gorsak – Prices, Prices Research ..... (202) 720-3225

Michael Mathison – ARMS ..... (202) 720-3243

Joe Samson – Cash Receipts, Grazing Fees ..... (202) 690-3347

Scott Shimmin – Farm Numbers, Land in Farms, Land Values ..... (202) 690-3231

Jennifer Sissom – Prices Paid, Prices Paid Indexes ..... (202) 690-3229

Dan Kerestes, Chief, Livestock Branch ..... (202) 720-3570

Scott Hollis, Head, Livestock Section..... (202) 720-3570

Sherry Bertramsen - Livestock Slaughter ..... (515) 284-4340

Jim Collom - Dairy Products..... (202) 690-3236

Joe Gaynor - Dairy Products Prices ..... (202) 690-2168

Jason Hardegree - Cattle, Cattle on Feed ..... (202) 720-3040

Mike Miller - Milk Production and Milk Cows ..... (202) 720-3278

Everett Olbert - Sheep & Lambs, Goats & Kids ..... (202) 720-4751

Nick Streff - Hogs and Pigs..... (202) 720-3106

## Access to NASS Reports

For your convenience, you may access NASS reports and products the following ways:

- All reports are available electronically, at no cost, on the NASS web site: [www.nass.usda.gov](http://www.nass.usda.gov).
- Both national and state specific reports are available via a free e-mail subscription. To set-up this free subscription, visit [www.nass.usda.gov](http://www.nass.usda.gov) and in the “Syndication” box under “Receive reports by E-mail,” click on “National” or “State” to select the reports you would like to receive.
- Printed reports and products may be purchased by calling toll-free (800) 999-6779, or (703) 605-6220 if calling from outside the United States or Canada. Accepted methods of payment are Visa, MasterCard, check, or money order.

For more information on NASS surveys and reports, call the NASS Agricultural Statistics Hotline at (800) 727-9540, 7:30 a.m. to 4:00 p.m. ET, or e-mail: [nass@nass.usda.gov](mailto:nass@nass.usda.gov).

The U.S. Department of Agriculture (USDA) prohibits discrimination in all its programs and activities on the basis of race, color, national origin, age, disability, and where applicable, sex, marital status, familial status, parental status, religion, sexual orientation, genetic information, political beliefs, reprisal, or because all or a part of an individual's income is derived from any public assistance program. (Not all prohibited bases apply to all programs.) Persons with disabilities who require alternative means for communication of program information (Braille, large print, audiotape, etc.) should contact USDA's TARGET Center at (202) 720-2600 (voice and TDD).

To file a complaint of discrimination, write to USDA, Director, Office of Civil Rights, 1400 Independence Avenue, S.W., Washington, D.C. 20250-9410, or call (800) 795-3272 (voice) or (202) 720-6382 (TDD). USDA is an equal opportunity provider and employer.