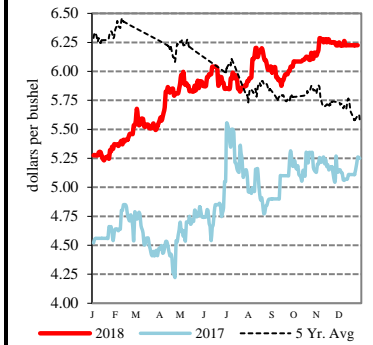


EXPORT	PRICE (\$/bu)	CHANGE (¢/bu)	BASIS (¢)		CHANGE
<u>Atlantic - JO_GR850</u>					
Soybeans	8.6250	-0.25	-20.00 F		UNCH
SRW	NQ	NQ	NQ		NQ
<u>Chicago - GX_GR110</u>					
Corn	3.2900 - 3.5500	-0.50	-46.00 H to	-20.00 H	UNCH
Soybeans	8.3750 - 8.5050	-0.25	-45.00 F to	-32.00 F	UNCH
SRW	5.0325 - 5.1325	-8.25	Opt H to	+10.00 H	UNCH
<u>Gulf - JO_GR112</u>					
Corn	4.1000 - 4.2300	-0.50	+35.00 H to	+48.00 H	UNCH
Soybeans	9.0250 - 9.1250	-0.25	+20.00 F to	+30.00 F	UNCH
SRW	5.7825 - 5.8325	+1.75 to	+75.00 H to	+80.00 H	+10.00 to +2.00
12 HRW	5.4875 - 5.6375	-7.25	+60.00 H to	+75.00 H	UNCH
<u>PNW - JO_GR110</u>					
SWW	6.15 - 6.30	UNCH	+111.75 H to	+126.75 H	+8.25
Ord HRW	6.13 - 6.34	-7.00	+124.00 H to	+145.00 H	UNCH
<u>Toledo - GX_GR111</u>					
Corn	3.6300	-0.50	-12.00 H		UNCH
Soybeans	8.5000	-0.50	-45.00 H		UNCH
SRW	4.9825	-8.25	-5.00 H		UNCH

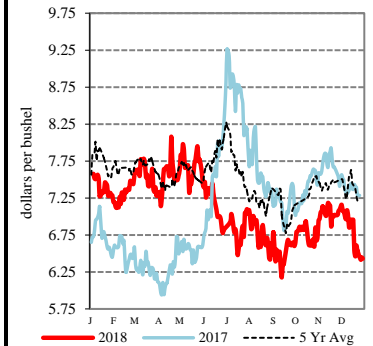
All prices are reported in dollars/bushel, except soybean and corn oil is in cents/lb. and soybean meal is in dollars/ton.

SWW - Portland, OR



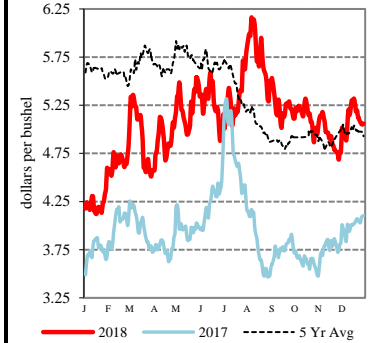
TERMINAL	PRICE (\$/bu)	CHANGE (¢/bu)	BASIS (¢)		CHANGE
<u>Kansas City - SJ_GR112</u>					
Corn	3.71	+5.00 to	-4.00 H	+6.00 to	+4.00
Soybeans	8.48	UNCH	-35.00 F		UNCH
Ord HRW	5.04	-2.00	+15.00 H		+5.00
<u>Minneapolis - MS_GR110</u>					
14 DNS/NS Del Chicag	NQ	NQ	NQ		NQ
Oats	3.2125 - 3.4525	+4.00 to	+46.00 H to	+70.00 H	+2.00 to +5.00
<u>Omaha - WH_GR110</u>					
Corn	3.57	+1.00	-18.00 H		+1.50
Soybeans	8.13 - 8.23	UNCH	-69.50 F to	-59.50 F	+0.25
<u>Portland - JO_GR111</u>					
11.5 HRW	6.34 - 6.49	-7.00	+145.00 H to	+160.00 H	UNCH
14 DNS	6.44 - 6.54	-2.00	+95.00 H to	+105.00 H	UNCH

14% DNS - Minneapolis, MN



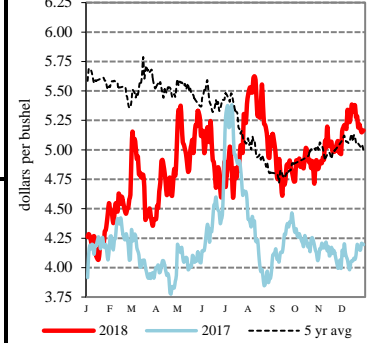
RIVER	PRICE (\$/bu)	CHANGE (¢/bu)	BASIS (¢)		CHANGE
<u>So. Iowa, Mississippi River - MS_GR114</u>					
Corn	3.4400 - 3.4500	-0.50	-31.00 H to	-30.00 H	UNCH
Soybeans	8.2350 - 8.2450	-0.25	-59.00 F to	-58.00 F	UNCH
<u>St. Louis, Mississippi River - JC_GR110</u>					
Corn	3.7700 - 3.8000	+3.00 to UNCH	+2.00 H to	+5.00 H	+3.50 to +0.50
Soybeans	8.7200 - 8.7500	+1.00 to -1.00	-10.50 F to	-7.50 F	+1.25 to -0.75
SRW	5.3500 - 5.3700	-8.00 to -6.00	+31.75 H to	+33.75 H	+0.25 to +2.25
<u>Memphis, Mississippi River - LR_GR110</u>					
Corn	3.7800 - 3.8100	-0.50	+3.00 H to	+6.00 H	UNCH
Soybeans	8.7450 - 8.7550	-0.25	-8.00 F to	-7.00 F	UNCH
SRW	NQ	NQ	NQ		NQ
<u>Cincinnati, Ohio River - GX_GR114</u>					
Corn	3.5200 - 3.5900	-0.50 to +0.50	-23.00 H to	-16.00 H	UNCH to +1.00
Soybeans	8.5250 - 8.5500	+4.75 to +0.25	-40.00 F to	-30.00 H	-5.00 to -2.00
SRW	NQ	NQ	NQ		NQ
<u>Mt. Vernon, Indiana, Ohio River - GX_GR114</u>					
Corn	3.4700 - 3.6200	-8.50 to -0.50	-28.00 H to	-13.00 H	-8.00 to UNCH
Soybeans	8.5800 - 8.7500	+3.25 to +8.25	-37.00 H to	-20.00 H	-9.00 to -4.00
SRW	5.1325 - 5.1925	-8.25	+10.00 H to	+16.00 H	UNCH
<u>No. Peoria, Illinois River - GX_GR112</u>					
Corn	3.5000 - 3.5600	-0.50	-25.00 H to	-19.00 H	UNCH
Soybeans	8.4450 - 8.4950	+1.75 to -0.25	-38.00 F to	-33.00 F	+2.00 to UNCH

Ordinary HRW - Kansas City, KS



PROCESSOR	PRICE	CHANGE	BASIS		CHANGE
<u>Central IL</u>					
<u>Corn</u>	3.5100 - 3.6700	-0.50	-24.00 H to	-8.00 H	UNCH
<u>Soybeans</u>	8.5250 - 8.7250	+1.75 to -0.25	-30.00 F to	-10.00 F	+2.00 to UNCH
Crude SB Oil	27.05 - 27.55	+0.03	-50.00 F to	Opt F	UNCH
48 SB Meal	309.90 - 310.90	-3.10	Opt H to	+1.00 H	UNCH
Crude Corn Oil - Rail	26.00	UNCH	N/A		N/A

SRW - Chicago, IL



FUTURES	PRICE	CHANGE	PRICE	CHANGE	
CME Group	Corn	H Mar 19 3.7500	-0.50	K May 19 3.8300	-0.25
	Soybeans	F Jan 19 8.8250	-0.25	H Mar 19 8.9500	-0.50
	Wheat (SRW)	H Mar 19 5.0325	-8.25	K May 19 5.1050	-8.25
	Oats	H Mar 19 2.7525	+1.75	K May 19 2.7800	+1.50
MGEX	HRS Wheat (DNS)	H Mar 19 5.4900	-1.50	K May 19 5.5425	-1.50
KCBOT	HRW Wheat	H Mar 19 4.8875	-7.25	K May 19 5.0075	-7.25

USDA Livestock, Poultry & Grain Market News
 210 Walnut Street, Room 767
 Des Moines, Iowa 50309
 Phone: 515-284-4460
 Email: Desm.LPGMN@ams.usda.gov
www.ams.usda.gov/LPSMarketNewsPage