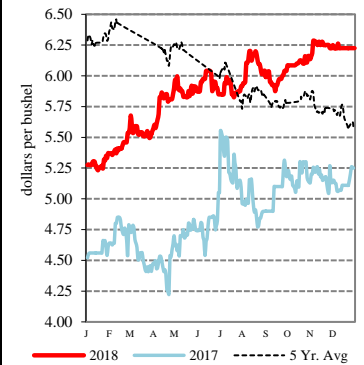


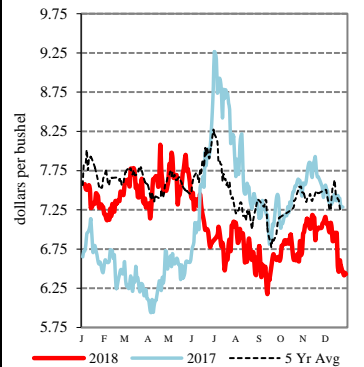
EXPORT	PRICE (\$/bu)	CHANGE (¢/bu)	BASIS (¢)		CHANGE
<u>Atlantic - JO_GR850</u>					
Soybeans	8.9350	-6.75	-10.00	H	UNCH
SRW	NQ	NQ	NQ		NQ
<u>Chicago - GX_GR110</u>					
Corn	3.4350 - 3.5850	+0.25	-35.00	H to -20.00	UNCH
Soybeans	8.4650 - 8.6150	-6.75	-57.00	H to -42.00	UNCH
SRW	5.1425 - 5.1925	-5.25	Opt	H to +5.00	UNCH
<u>Gulf - JO_GR112</u>					
Corn	4.1450 - 4.2550	+0.25	+36.00	H to +47.00	UNCH
Soybeans	9.2450 - 9.2550	-4.75 to -6.75	+21.00	H to +22.00	+2.00 to UNCH
SRW	5.9625 - 5.9825	-3.25 to -5.25	+82.00	H to +84.00	+2.00 to UNCH
12 HRW	5.5900 - 5.7400	-5.50	+60.00	H to +75.00	UNCH
<u>PNW - JO_GR110</u>					
SWW	6.10 - 6.35	-5.00 to UNCH	+95.75	H to +120.75	+0.25 to +5.25
Ord HRW	6.33 - 6.44	-1.00 to -6.00	+134.00	H to +145.00	+5.00 to UNCH
<u>Toledo - GX_GR111</u>					
Corn	3.6650	+0.25	-12.00	H	UNCH
Soybeans	8.5850	-6.75	-45.00	H	UNCH
SRW	5.0925	-5.25	-5.00	H	UNCH

All prices are reported in dollars/bushel, except soybean and corn oil is in cents/lb. and soybean meal is in dollars/ton.

SWW - Portland, OR

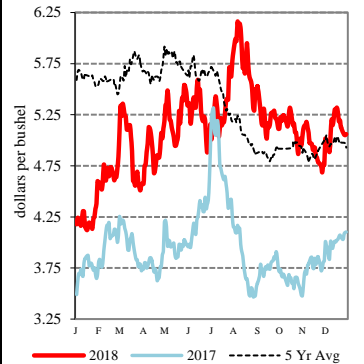


14% DNS - Minneapolis, MN



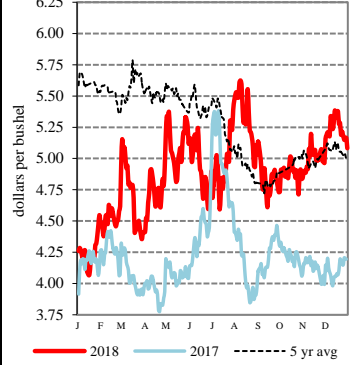
TERMINAL	PRICE (\$/bu)	CHANGE (¢/bu)	BASIS (¢)		CHANGE
<u>Kansas City - SJ_GR112</u>					
Corn	3.69 - 3.75	+1.00	-10.00	H to -4.00	UNCH
Soybeans	8.44 - 8.54	-11.00	-60.00	H to -50.00	-5.00
Ord HRW	4.89 - 5.24	-6.00	-10.00	H to +25.00	UNCH
<u>Minneapolis - MS_GR110</u>					
14 DNS/NS Del Chicagr	NQ	NQ	NQ		NQ
Oats	3.0500 - 3.6500	-1.00 to +5.00	+5.00	H to +65.00	-6.00 to UNCH
<u>Omaha - WH_GR110</u>					
Corn	3.58 - 3.59	+1.00	-20.50	H to -19.50	+0.75
Soybeans	8.24 - 8.36	-6.00	-79.50	H to -67.50	+0.75
<u>Portland - JO_GR111</u>					
11.5 HRW	6.54 - 6.59	-1.00 to -6.00	+155.00	H to +160.00	+5.00 to UNCH
14 DNS	6.56 - 6.71	-9.00 to -4.00	+90.00	H to +105.00	-5.00 to UNCH

Ordinary HRW - Kansas City, KS



RIVER	PRICE (\$/bu)	CHANGE (¢/bu)	BASIS (¢)		CHANGE
<u>So. Iowa, Mississippi River - MS_GR114</u>					
Corn	3.4650 - 3.5250	+0.25	-32.00	H to -26.00	UNCH
Soybeans	8.3050 - 8.3350	-7.75 to -6.75	-73.00	H to -70.00	-1.00 to UNCH
<u>St. Louis, Mississippi River - JC_GR110</u>					
Corn	3.6900 - 3.7300	UNCH to +1.00	-9.50	H to -5.50	-0.25 to +0.75
Soybeans	8.6800 - 8.7000	-6.00 to -7.00	-35.50	H to -33.50	+0.75 to -0.25
SRW	5.4200 - 5.4800	-6.00	+27.75	H to +33.75	-0.75
<u>Memphis, Mississippi River - LR_GR110</u>					
Corn	3.7450 - 3.8150	+3.25 to -1.75	-4.00	H to +3.00	+3.00 to -2.00
Soybeans	8.7750 - 8.7850	-7.75 to -9.75	-26.00	H to -25.00	-1.00 to -3.00
SRW	5.1425	-5.25	Opt	H	UNCH
<u>Cincinnati, Ohio River - GX_GR114</u>					
Corn	3.4950 - 3.5650	+1.25 to -4.75	-29.00	H to -22.00	+1.00 to -5.00
Soybeans	8.4950 - 8.5550	-5.75 to -7.75	-54.00	H to -48.00	+1.00 to -1.00
SRW	NQ	NQ	NQ		NQ
<u>Mt. Vernon, Indiana, Ohio River - GX_GR114</u>					
Corn	3.6050	+2.25 to -2.75	-18.00	H	+2.00 to -3.00
Soybeans	8.6150 - 8.7550	-8.75 to -6.75	-42.00	H to -28.00	-2.00 to UNCH
SRW	5.2925 - 5.3425	-8.25 to -5.25	+15.00	H to +20.00	-3.00 to UNCH
<u>No. Peoria, Illinois River - GX_GR112</u>					
Corn	3.4750 - 3.5350	-1.75	-31.00	H to -25.00	-2.00
Soybeans	8.4550 - 8.5150	-4.75 to -6.75	-58.00	H to -52.00	+2.00 to UNCH

SRW - Chicago, IL



PROCESSOR	PRICE	CHANGE	BASIS		CHANGE
<u>Central IL</u>					
<u>Corn</u>	3.5150 - 3.7050	+0.25	-27.00	H to -8.00	UNCH
<u>Soybeans</u>	8.5950 - 8.7650	-5.75 to -6.75	-44.00	H to -27.00	+1.00 to UNCH
Crude SB Oil	27.60 - 28.40	-0.07 to +0.23	-80.00	H to Opt	No Comp
48 SB Meal	311.80 - 313.80	-2.80	Opt	H to +2.00	UNCH
Crude Corn Oil - Rail	27.04	+1.04 to -0.16	N/A		N/A

FUTURES		PRICE	CHANGE		PRICE	CHANGE
CME Group	Corn	H Mar 19	3.7850	+0.25	K May 19	3.8700 +0.25
	Soybeans	H Mar 19	9.0350	-6.75	K May 19	9.1725 -6.50
	Wheat (SRW)	H Mar 19	5.1425	-5.25	K May 19	5.1975 -5.25
	Oats	H Mar 19	3.0000	+5.25	K May 19	2.9225 +5.25
MGEX	HRS Wheat (DNS)	H Mar 19	5.6550	-4.50	K May 19	5.7025 -4.00
KCBOT	HRW Wheat	H Mar 19	4.9900	-5.50	K May 19	5.1025 -5.75

USDA Livestock, Poultry & Grain Market News  
 210 Walnut Street, Room 767  
 Des Moines, Iowa 50309  
 Phone: 515-284-4460  
 Email: Desm.LPGMN@ams.usda.gov  
[www.ams.usda.gov/LPSMarketNewsPage](http://www.ams.usda.gov/LPSMarketNewsPage)