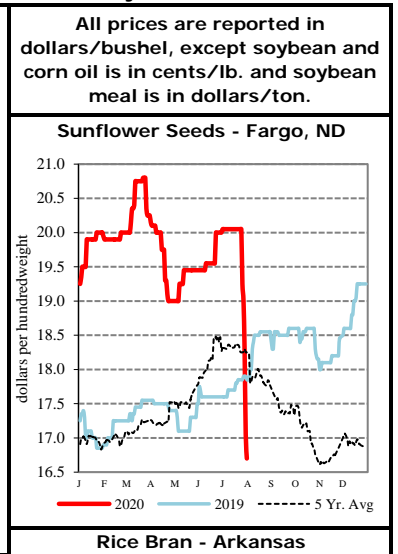
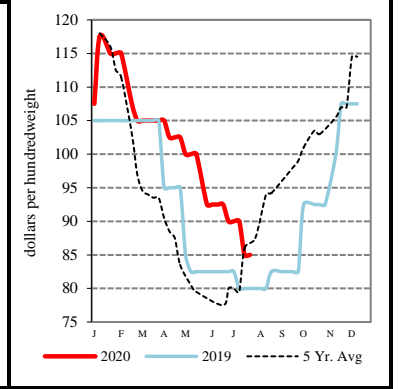


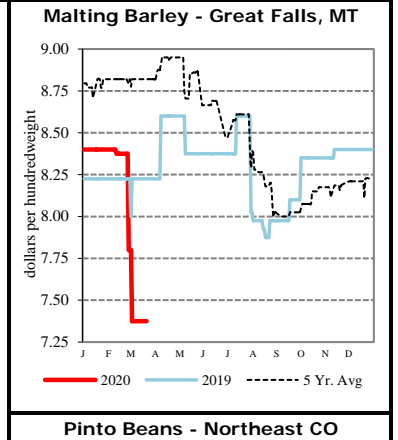
EXPORT	PRICE (\$/bu)	CHANGE (¢/bu)	BASIS (¢)	CHANGE
<u>Atlantic - JO_GR850</u>				
Soybeans	9.0300	-0.75	+25.00 X	UNCH
SRW	5.1525	-8.50	-10.00 N	#N/A # #N/A
<u>Chicago - GX_GR110</u>				
Corn	2.8625 - 2.9625	+0.25	-25.00 U to -15.00 U	UNCH
Soybeans	8.6600 - 8.8300	-0.75	-12.00 X to +5.00 X	UNCH
SRW	4.9125 - 5.0625	-9.50	-10.00 U to +5.00 U	UNCH
<u>Gulf - JO_GR112</u>				
Corn	3.5925	+0.25 to -4.75	+48.00 U	UNCH to -5.00
Soybeans	9.5275 - 9.5375	-1.25	+72.00 Q to +73.00 Q	UNCH
SRW	5.5625 - 5.6625	-14.50 to -9.50	+55.00 U to +65.00 U	-5.00 to UNCH
12 HRW	N/A	N/A	N/A	N/A
<u>PNW - JO_GR110</u>				
SWW	5.55 - 5.59	UNCH	+53.75 U to +57.75 U	+9.50
Ord HRW	5.27 - 5.37	-10.00	+110.00 U to +120.00 U	UNCH
<u>Toledo - GX_GR111</u>				
Corn	3.0125 - 3.0625	+0.25	-10.00 U to -5.00 U	UNCH
Soybeans	8.7300 - 8.7800	-0.75	-5.00 X to Opt X	UNCH
SRW	5.0125	-9.50	Opt U	UNCH



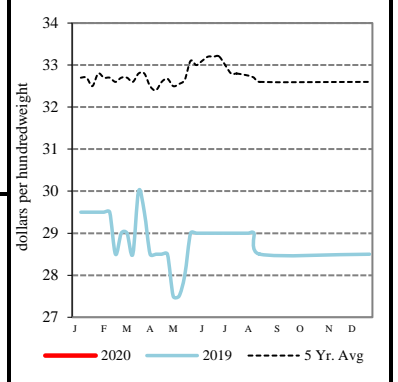
TERMINAL	PRICE (\$/bu)	CHANGE (¢/bu)	BASIS (¢)	CHANGE
<u>Kansas City - SJ_GR112</u>				
Corn	3.11	UNCH	Opt U	UNCH
Soybeans	8.35 - 8.73	-1.00	-43.00 X to -5.00 X	UNCH
Ord HRW	4.32 - 4.42	-10.00	+15.00 U to +25.00 U	UNCH
<u>Minneapolis - MS_GR110</u>				
14 DNS/NS Del Chicago	5.9600	-5.50	+100.00 U	UNCH
Oats	2.7775 - 3.1575	-1.00 to -2.00	+12.00 Z to +50.00 Z	+1.00 to UNCH
<u>Omaha - WH_GR110</u>				
Corn	2.94 - 2.99	+0.00	-17.00 U to -12.00 U	UNCH
Soybeans	8.38	-1.00	-40.00 X	UNCH
<u>Portland - JO_GR111</u>				
11.5 HRW	5.57 - 5.67	-10.00	+140.00 U to +150.00 U	UNCH
14 DNS	5.91 - 6.06	-6.00	+95.00 U to +110.00 U	UNCH



RIVER	PRICE (\$/bu)	CHANGE (¢/bu)	BASIS (¢)	CHANGE
<u>So. Iowa, Mississippi River - MS_GR114</u>				
Corn	2.9725 - 2.9925	+0.25 to -0.75	-14.00 U to -12.00 U	UNCH to -1.00
Soybeans	8.8200 - 8.8600	+0.25	+4.00 X to +8.00 X	+1.00
<u>St. Louis, Mississippi River - JC_GR110</u>				
Corn	3.2500	+1.00 to UNCH	+13.75 U	+0.75 to -0.25
Soybeans	9.1100 - 9.1200	-2.00 to -1.00	+33.00 X to +34.00 X	-1.25 to -0.25
SRW	5.1600	-10.00	+14.75 U	-0.50
<u>Memphis, Mississippi River - LR_GR110</u>				
Corn	3.1325 - 3.2025	-1.75 to +0.25	+2.00 U to +9.00 U	-2.00 to UNCH
Soybeans	8.9600 - 9.0800	-0.75 to -1.75	+18.00 X to +30.00 X	UNCH to -1.00
SRW	5.0925 - 5.1125	-9.50 to -7.50	+8.00 U to +10.00 U	UNCH to +2.00
<u>Toledo - On River</u>				
Corn	3.0125 - 3.0625	+0.25	-10.00 U to -5.00 U	UNCH
Soybeans	8.7300 - 8.7800	-0.75	-5.00 X to Opt X	UNCH
SRW	5.0125	-9.50	Opt U	UNCH
<u>Ohio River</u>				
Corn	3.0325 - 3.1125	-3.75 to -2.75	-8.00 U to Opt U	-4.00 to -3.00
Soybeans	8.9100 - 9.0600	-2.75 to -0.75	+11.00 Q to +28.00 X	-2.00 to UNCH
SRW	4.9625 - 5.1625	-9.50 to -11.50	-5.00 U to +15.00 U	UNCH to -2.00
<u>North Illinois River</u>				
Corn	2.8625	+0.25	-25.00 U	UNCH
Soybeans	8.5000	-0.75	-28.00 X	UNCH



PROCESSOR	PRICE	CHANGE	BASIS	CHANGE
<u>Central IL</u>				
<u>Corn</u>	3.0125 - 3.2625	+0.25	-10.00 U to +15.00 U	UNCH
<u>Soybeans</u>	8.6600 - 8.8600	-0.75	-12.00 X to +8.00 X	UNCH
Crude SB Oil	31.47 - 31.82	+0.67 to +0.47	+25.00 U to +60.00 U	+55.00 to +35.00
48 SB Meal	281.20 - 283.20	-1.50	-2.00 U to Opt U	UNCH
Crude Corn Oil - Rail	44.00	UNCH	N/A	N/A



FUTURES	PRICE	CHANGE	PRICE	CHANGE
CME Group	Corn	U Sep 20	3.1125	+0.25
	Soybeans	Q Aug 20	8.8075	-1.25
	Wheat (SRW)	U Sep 20	5.0125	-9.50
	Oats	U Sep 20	2.7450	-0.25
MGEX	HRS Wheat (DNS)	U Sep 20	4.9600	-5.50
KCBOT	HRW Wheat	U Sep 20	4.1725	-9.25

USDA Livestock, Poultry & Grain Market News  
 210 Walnut Street, Room 767  
 Des Moines, Iowa 50309  
 Phone: 515-284-4460  
 Email: Desm.LPGMN@usda.gov  
[www.ams.usda.gov/LPSMarketNewsPage](http://www.ams.usda.gov/LPSMarketNewsPage)