



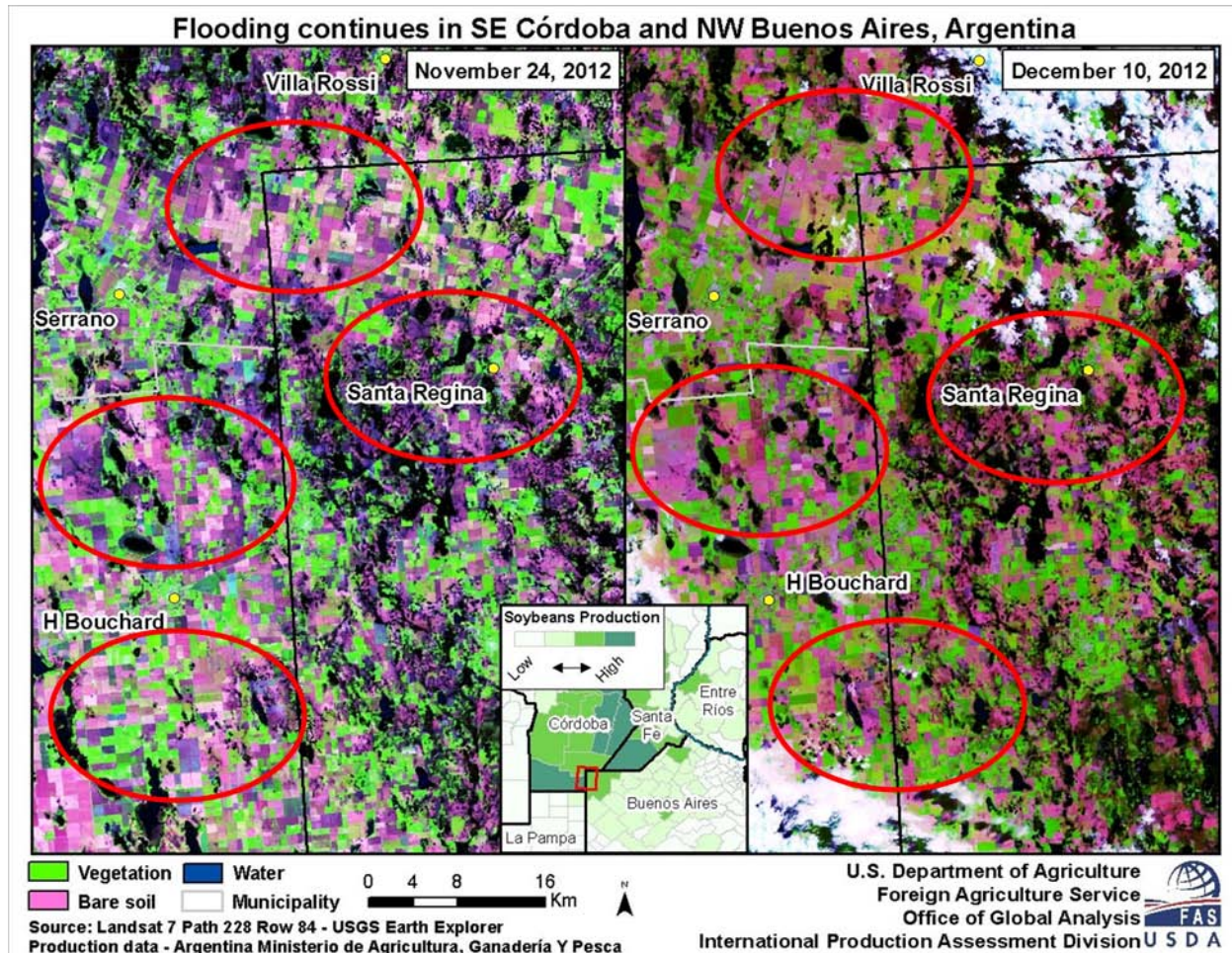
United States  
Department of  
Agriculture

Foreign  
Agricultural  
Service

Circular Series  
WAP 1-13

# World Agricultural Production

## Argentina Soybeans: Planting Difficult with Excessive Rainfall



The USDA forecasts 2012/13 Argentine soybean production at 54.0 million, 2 percent less than last month but 35 percent more than last year. Area is estimated at 19.5 million hectares, 2 percent lower from last month and up 11 percent from last year. Yield is forecast at 2.77 tons per hectare, half a percent lower than last month and 21 percent higher than last year.

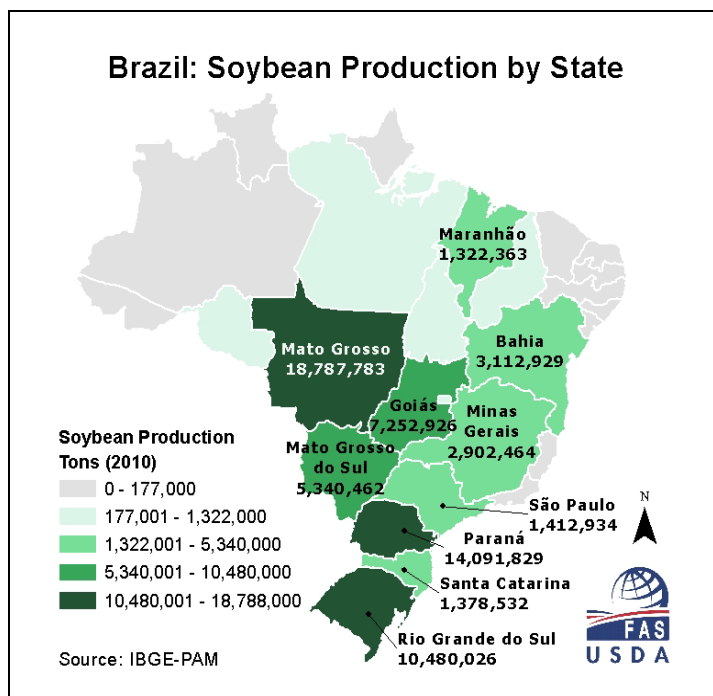
Recent rains continue to hamper seeding in some areas. About 85 percent of the expected area has been seeded by the end of the first week of January. Problem areas, however, continue to be in northwest Buenos Aires (parts of the departments of General Villegas, Ameghino, and General Pinto) and southern Cordoba (department of Presidente Roque Sáenz Peña) where flooding may not allow 230,000 Ha to be seeded to a crop due to standing water. Ponding of excess rain on fields in

Approved by the World Agricultural Outlook Board

the center of the province of Buenos Aires may also prevent or greatly delay planting on an additional 42,000 Ha. In early January, more rain in the northern regions of Argentina further complicated planting advances postponing seeding until fields dry enough to allow planters back in the fields. *(For additional information, contact Dr. Denise McWilliams at 202-720-0107.)*

### Brazil Soybeans: Estimated Yield Increases Following Beneficial Rainfall

The USDA forecasts Brazil soybean production for 2012/13 at 82.5 million tons, up 1.5 million, or 2 percent, from last month and up 16.0 million, or 24 percent, from last year's drought-affected crop. Area is estimated at 27.5 million hectares, unchanged from last month and up 2.5 million hectares, or 10 percent, from last year. Yield is forecast at 3.00 tons per hectare, compared to 2.66 tons per hectare last year and the five-year average of 2.85 tons per hectare.



Yield prospects for Brazil soybeans have increased due to good early-season conditions in the key states of Mato Grosso and Parana. Soybean crop stages vary considerably across the country. The harvest of the early varieties in Mato Grosso has begun as the last of the soybean planting in Brazil is finishing. Brazilian farmers reacted enthusiastically to high soybean prices this year and increased area by 10 percent to a record 27.5 million hectares. Brazil is forecasted to be the world's largest producer of soybeans, surpassing the United States this year when the United States suffered through its worst drought in 50 years. *(For more information, contact Bob Tetrault at 202-720-1071.)*

### Argentine Corn: Planting Continues Around Rain-Soaked Ground

USDA forecasts Argentine corn production for 2012/13 at 28.0 million tons, up 2 percent from last month and 33 percent above the 21 million tons grown in 2011/12. Area is estimated at 3.5 million hectares 5 percent less than last month and 3 percent less than last year's drought-affected, harvested area. The yield for the crop is estimated at 8.0 tons per hectare 8 percent more than last month and 37 percent more than last year's ravaged yields.

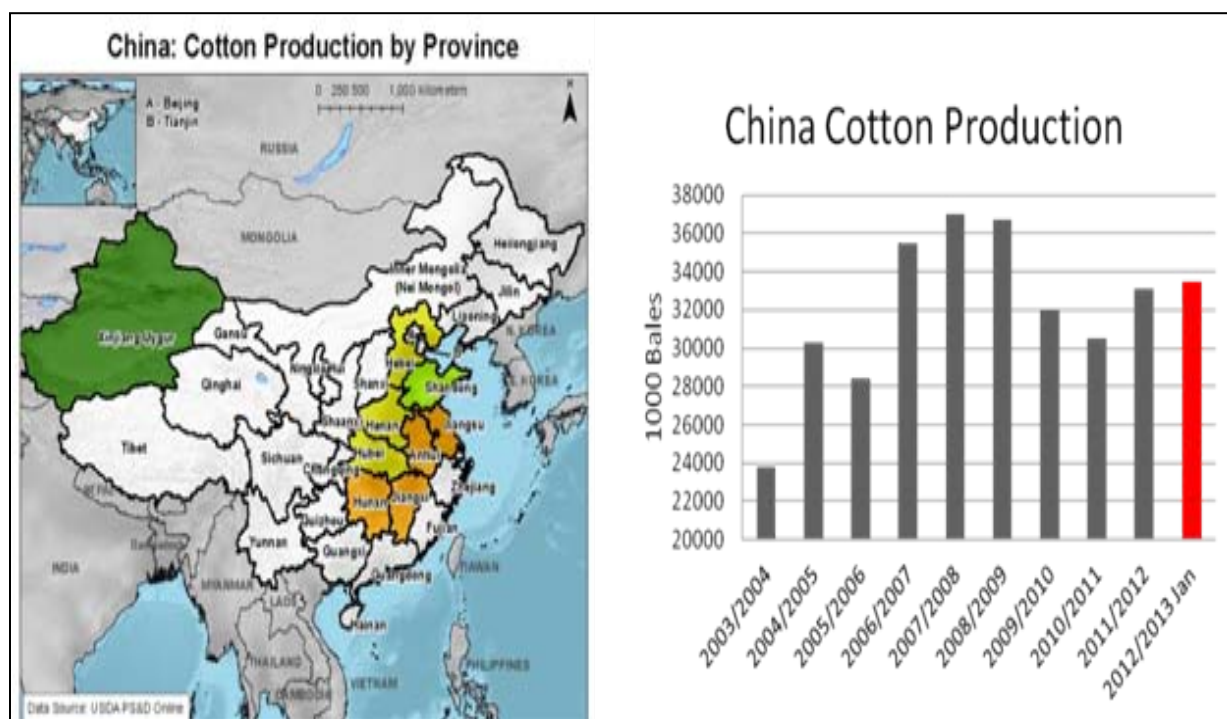
Rains continue over the core-planting regions of Buenos Aires, Cordoba, Santa Fe and up into the northern regions where planting is nearing the end. Of the crop originally forecast to be planted, 4 percent in Buenos Aires remains unplanted; 4 percent in Cordoba; 11 percent in La Pampa; 11 percent in Santa Fe; and, 60 percent in the Northern regions, according to the Argentine Ministry of Agriculture in early January. Soil profiles throughout the country have ample moisture. Early-seeded corn is at the seed-fill stage and shows good yield potential



because of the good moisture. There has been some crop spraying of corn due to reports of severe armyworm infestations in some locations along with sporadic disease such as smut and corn blight. *(For additional information, contact Dr. Denise McWilliams at 202-720-0107.)*

### China Cotton: Production in 2012/13 Larger than Expected

Cotton production for 2012/13 is estimated at 33.5 million bales (7.3 million tons), up 2.0 million, or 6 percent, from last month and up 1 percent from last year. The estimated output is slightly below the 5-year average and well below the record set in 2007/08 (37.0 million bales). The estimated area of 5.2 million hectares is up 4 percent this month but down 4 percent from last year. Yield is estimated at 1,403 kilograms per hectare, up 2 percent from last month and up 5 percent from last year. Record yields in Northwest China are expected to offset yield reductions in eastern China, which suffered from excessive rainfall and typhoon damage during the latter part of the growing season.

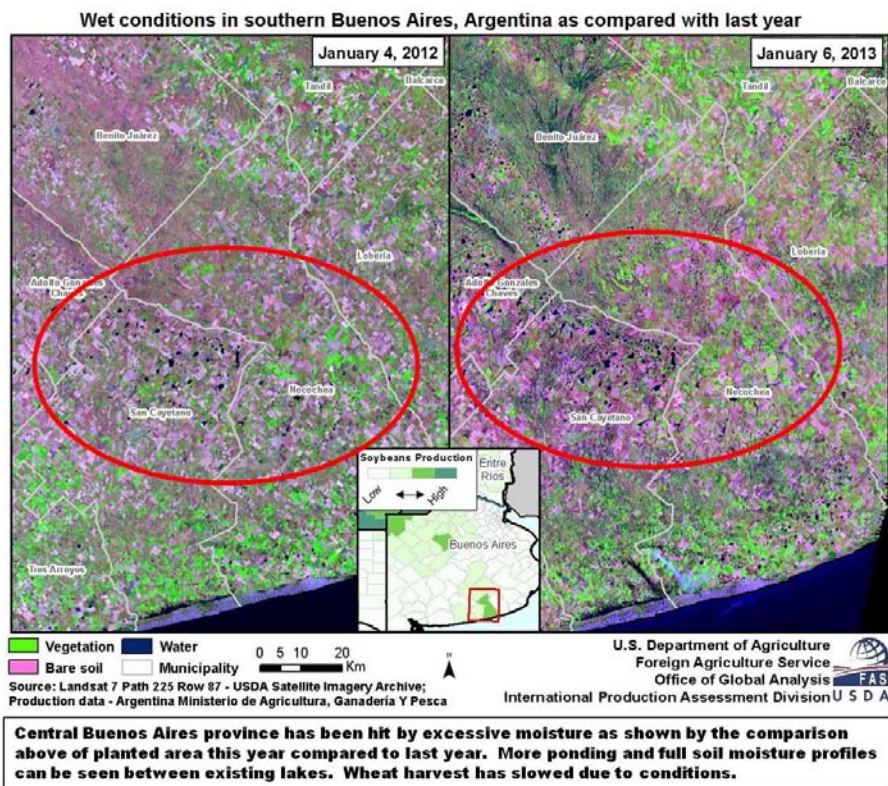


More than 50 percent of China's cotton was produced in Xinjiang Province (Northwest China) in 2012/13

The revisions are based on procurement and classification data published by official Chinese sources, which indicate greater-than-expected output in 2012/13. The increased production came almost entirely from Xinjiang province (Northwest China), which now accounts for more than half of China's total cotton crop. Favorable weather, increased planted area, heavy investment in irrigation and mechanization, and supportive government procurement policies have all contributed to the remarkable output in Xinjiang this year. *(For more information, contact Paulette Sandene at 202-690-0133.)*

## Argentina Wheat: Harvest Slow but Progressing in Buenos Aires and La Pampa

The USDA forecasts Argentine wheat production for 2012/13 at 11.0 million tons, down 4 percent from last month and down 29 percent from last year. Area is estimated at 3.7 million hectares, down 3 percent from last month and down 28 percent from last year. Yield is forecast at 2.97 tons per hectare, down 2 percent from last month and down 1 percent from last year.



Favorable early season moisture conditions deteriorated when above-normal rains continued over stretches of La Pampa, particularly during the last half of the growing season. Rosario and surrounding areas have received excessive rainfall for the season on the open, flat topography. Ponding not only damaged crops but also slowed harvest and heightened concerns over disease and grain quality. The first week of January, harvest activity was concentrated around the provinces of Buenos Aires (55 percent of wheat remains to be harvested) and La Pampa (20 percent of the crop still to be harvested) where rain two weeks ago slowed the harvest. As of the week ending in Jan. 5, 30 percent of the Argentine crop remained to be harvested, mostly in the province of Buenos Aires. (For additional information, contact Dr. Denise McWilliams at 202-270-0107.)



**World Agricultural Production  
U.S. Department of Agriculture**

Foreign Agricultural Service / Office of Global Analysis  
International Production Assessment Division (IPAD / PECAD)  
Ag Box 1051, Room 4630, South Building  
Washington, DC 20250-1051

<http://www.pecad.fas.usda.gov/>

Telephone: (202) 720-1157 Fax: (202) 720-1158

This report uses information from the Foreign Agricultural Service’s (FAS) global network of agricultural attachés and counselors, official statistics of foreign governments and other foreign source materials, and the analysis of economic data and satellite imagery. Estimates of foreign area, yield, and production are from the International Production Assessment Branch, FAS, and are reviewed by USDA’s Inter-Agency Commodity Estimates Committee. Estimates of U.S. area, yield, and production are from USDA’s National Agricultural Statistics Service. Numbers within the report may not add to totals because of rounding. This report reflects official USDA estimates released in the World Agricultural Supply and Demand Estimates (WASDE-514), January 11, 2013.

**Printed copies are available from the National Technical Information Service. Download an order form at [http://www.ntis.gov/products/specialty/usda/fas\\_a-g.asp](http://www.ntis.gov/products/specialty/usda/fas_a-g.asp), or call NTIS at 1-800-363-2068.**

The FAS International Production Assessment Branch prepared this report. The next issue of World Agricultural Production will be released after 12:00 p.m. Eastern Time, February 8, 2013.

**Conversion Table**

Metric tons to bushels

Wheat, soybeans	=	MT * 36.7437
Corn, sorghum, rye	=	MT * 39.36825
Barley	=	MT * 45.929625
Oats	=	MT * 68.894438

Metric tons to 480-lb bales

Cotton	=	MT * 4.592917
--------	---	---------------

Metric tons to hundredweight

Rice	=	MT * 22.04622
------	---	---------------

Area & weight

1 hectare	=	2.471044 acres
1 kilogram	=	2.204622 pounds



For further information, contact:  
**U.S. Department of Agriculture**  
Foreign Agricultural Service  
**Office of Global Analysis**  
International Production Assessment Division  
Ag Box 1051, Room 4630, South Building  
Washington, DC 20250-1051

Telephone: (202) 720-1157

Fax: (202) 720-1158

---

### **GENERAL INFORMATION**

Director	Derrick Williams III	202-690-0131	derrick.williams@fas.usda.gov
Deputy Director	Paul Provance	202-720-0873	paul.provance@fas.usda.gov
USDA Remote Sensing Advisor	Glenn Bethel	202-720-1280	glenn.bethel@fas.usda.gov
Sr. Analyst/SIA Manager	Curt Reynolds, PhD	202-690-0134	curt.reynoldsc@fas.usda.gov
Sr. Analyst/Technical Lead	Dath Mita, PhD	202-720-7339	mita.dath@fas.usda.gov
Sr. Agricultural Economist	Vacant		
Program Analyst	Mary Jackson	202-720-0886	mary.jackson@fas.usda.gov
GIS Analyst/WAP Coordinator	Justin Jenkins	202-720-0419	justin.jenkins@fas.usda.gov

### **COUNTRY- AND REGION-SPECIFIC INFORMATION**

South America, Argentina and Columbia	Denise McWilliams, PhD	202-720-0107	denise.mcwilliams@fas.usda.gov
Western and Central Europe, and North Africa	Bryan Purcell	202-690-0138	bryan.purcell@fas.usda.gov
Russia, Kazakhstan, Ukraine, and other FSU-12 countries	Mark Lindeman	202-690-0143	mark.lindeman@fas.usda.gov
Canada, Caribbean, Sri Lanka, and Bangladesh	Arnella Trent	202-720-0881	arnella.trent@fas.usda.gov
East Asia, China, and Japan	Paulette Sandene	202-690-0133	paulette.sandene@fas.usda.gov
India, Pakistan and Nepal	Dath Mita, PhD	202-720-7339	mita.dath@fas.usda.gov
Sub-Saharan Africa, Mexico Nigeria and South Africa	Curt Reynolds, PhD	202-690-0134	curt.reynoldsc@fas.usda.gov
S.E. Asia, Indonesia, Thailand, Malaysia, Cambodia and Vietnam	Michael Shean	202-720-7366	michael.shean@fas.usda.gov
Brazil, Venezuela and Central America	Robert Tetrault	202-720-1071	robert.tetrault@fas.usda.gov
Australia, New Zealand, Papua New Guinea and South Pacific Islands	Jim Crutchfield	202-690-0135	james.crutchfield@fas.usda.gov
Middle East, Afghanistan, Iraq, Iran and Syria	Bill Baker, PhD	202-260-8109	bill.baker@fas.usda.gov
Western United States	Justin Jenkins	202-720-0419	justin.jenkins@fas.usda.gov
Eastern United States	Paul Provance	202-720-0873	paul.provance@fas.usda.gov
Crop Analyst/ Global Special Projects Manager	Vacant		
Crop Analyst	Vacant		

**Table 01 World Crop Production Summary**

Million Metric Tons

Commodity	World -	Total Foreign	North America			EU-27 -	Former Soviet		Asia (WAP)					South America		Selected Other			All Others
			United States	Canada -	Mexico -		Russia -	Ukraine -	China -	India -	Indonesia	Pakistan	Thailand	Argentina	Brazil -	Australia	South Africa	Turkey -	
---Million metric tons---																			
<b>Wheat</b>																			
2010/11	652.2	592.2	60.1	23.3	3.7	136.0	41.5	16.8	115.2	80.8	nr	23.9	nr	17.2	5.9	27.4	1.4	17.0	82.0
2011/12 prel.	696.4	642.0	54.4	25.3	3.6	137.2	56.2	22.1	117.4	86.9	nr	25.0	nr	15.5	5.8	29.9	2.0	18.8	96.2
2012/13 proj.																			
Dec	655.1	593.4	61.8	27.2	3.3	131.7	38.0	15.5	120.6	93.9	nr	23.3	nr	11.5	4.8	22.0	1.8	15.5	84.3
Jan	654.3	592.6	61.8	27.2	3.3	131.7	37.7	15.5	120.6	93.9	nr	23.3	nr	11.0	4.8	22.0	1.8	15.5	84.3
<b>Coarse Grains</b>																			
2010/11	1,099.3	769.1	330.2	22.6	29.2	140.5	16.4	21.4	183.4	43.4	6.8	3.6	4.3	33.3	60.4	11.5	11.3	10.2	170.8
2011/12 prel.	1,154.4	830.7	323.7	22.9	25.7	147.4	33.1	33.3	199.7	42.1	8.9	3.6	4.4	30.1	75.9	12.3	12.9	11.3	167.1
2012/13 proj.																			
Dec	1,118.9	834.1	284.8	24.3	27.8	140.2	29.4	28.6	215.0	37.6	8.9	3.6	4.6	38.9	73.5	11.0	14.0	10.6	166.4
Jan	1,121.2	835.2	286.0	24.3	27.8	140.2	28.4	28.6	215.0	37.6	8.9	3.6	4.6	39.2	74.5	11.0	14.0	10.6	167.2
<b>Rice, Milled</b>																			
2010/11	449.3	441.7	7.6	nr	0.1	2.2	0.7	0.1	137.0	96.0	35.5	5.0	20.3	1.1	9.3	0.5	nr	0.5	133.4
2011/12 prel.	465.0	459.1	5.9	nr	0.1	2.1	0.7	0.1	140.7	104.3	36.5	6.5	20.5	1.0	7.9	0.7	nr	0.5	137.6
2012/13 proj.																			
Dec	465.3	459.0	6.3	nr	0.1	2.0	0.7	0.1	143.0	99.0	36.9	6.7	20.5	0.9	7.8	0.8	nr	0.5	139.9
Jan	465.6	459.2	6.4	nr	0.1	2.0	0.7	0.1	143.0	99.0	36.9	6.8	20.5	1.0	8.2	0.8	nr	0.5	139.6
<b>Total Grains</b>																			
2010/11	2,200.9	1,803.0	397.9	45.9	33.0	278.7	58.6	38.4	435.6	220.2	42.3	32.5	24.5	51.6	75.6	39.4	12.8	27.7	386.3
2011/12 prel.	2,315.9	1,931.8	384.0	48.2	29.4	286.8	90.0	55.6	457.8	233.3	45.4	35.1	24.8	46.6	89.6	42.9	14.9	30.6	400.9
2012/13 proj.																			
Dec	2,239.4	1,886.5	352.9	51.5	31.2	274.0	68.1	44.2	478.6	230.5	45.8	33.6	25.1	51.3	86.1	33.8	15.7	26.6	390.6
Jan	2,241.1	1,887.0	354.1	51.5	31.2	274.0	66.7	44.2	478.6	230.5	45.8	33.7	25.1	51.2	87.5	33.8	15.7	26.6	391.1
<b>Oilseeds</b>																			
2010/11	455.7	355.3	100.4	17.3	0.7	29.1	7.2	11.6	58.1	35.0	9.6	4.8	0.6	54.2	79.0	3.8	1.7	1.9	40.7
2011/12 prel.	441.4	349.0	92.3	18.9	0.9	29.2	12.4	14.3	59.0	35.7	10.2	5.8	0.7	44.7	70.2	5.3	1.3	2.1	38.3
2012/13 proj.																			
Dec	463.0	371.7	91.3	18.3	0.9	27.2	10.3	12.6	55.8	35.4	10.8	5.5	0.7	59.8	83.7	4.1	1.6	2.1	42.7
Jan	465.8	373.1	92.7	18.3	0.9	27.2	10.3	12.6	56.6	35.4	10.8	5.5	0.7	58.8	85.2	4.2	1.6	2.1	42.8
<b>Cotton</b>																			
2010/11	116.3	98.2	18.1	nr	0.7	1.2	nr	nr	30.5	26.4	0.0	8.6	0.0	1.4	9.0	4.2	0.1	2.1	14.0
2011/12 prel.	124.1	108.6	15.6	nr	1.2	1.6	nr	nr	33.1	27.5	0.0	10.6	0.0	1.0	8.7	5.5	0.1	3.4	15.8
2012/13 proj.																			
Dec	116.9	99.6	17.3	nr	0.9	1.4	nr	nr	31.5	25.5	0.0	10.0	0.0	0.8	6.5	4.0	0.1	2.8	16.2
Jan	118.8	101.8	17.0	nr	0.9	1.4	nr	nr	33.5	25.5	0.0	10.0	0.0	0.8	6.5	4.2	0.0	2.8	16.1

1/ Includes wheat, coarse grains, and rice (milled) shown above.

**Table 02 Wheat Area, Yield, and Production**

Country / Region	Area (Million hectares)				Yield (Metric tons per hectare)				Production (Million metric tons)				Change in Production			
	Prel.		2012/13 Proj.		Prel.		2012/13 Proj.		Prel.		2012/13 Proj.		From last month		From last year	
	2010/11	2011/12	Dec	Jan	2010/11	2011/12	Dec	Jan	2010/11	2011/12	Dec	Jan	MMT	Percent	MMT	Percent
<b>World</b>	218.28	221.90	217.63	217.53	2.99	3.14	3.01	3.01	652.24	696.44	655.11	654.31	-0.80	-0.12	-42.13	-6.05
<b>United States</b>	19.27	18.50	19.83	19.83	3.12	2.94	3.11	3.11	60.06	54.41	61.76	61.76	0.00	0.00	7.34	13.49
<b>Total Foreign</b>	199.01	203.40	197.80	197.70	2.98	3.16	3.00	3.00	592.18	642.03	593.36	592.56	-0.80	-0.13	-49.47	-7.71
<b>China</b>	24.26	24.27	24.14	24.14	4.75	4.84	5.00	5.00	115.18	117.40	120.60	120.60	0.00	0.00	3.20	2.73
<b>South Asia</b>																
India	28.46	29.40	29.69	29.69	2.84	2.95	3.16	3.16	80.80	86.87	93.90	93.90	0.00	0.00	7.03	8.09
Pakistan	9.03	8.90	8.66	8.66	2.65	2.81	2.69	2.69	23.90	25.00	23.30	23.30	0.00	0.00	-1.70	-6.80
Afghanistan	2.30	2.10	2.51	2.51	1.61	1.19	1.65	1.65	3.70	2.50	4.15	4.15	0.00	0.00	1.65	66.00
<b>Former Soviet Union - 12</b>																
Russia	21.75	24.81	21.80	21.80	1.91	2.27	1.74	1.73	41.51	56.24	38.00	37.70	-0.30	-0.79	-18.54	-32.97
Ukraine	6.28	6.66	5.70	5.70	2.68	3.32	2.72	2.72	16.84	22.12	15.50	15.50	0.00	0.00	-6.62	-29.94
Kazakhstan	14.26	13.85	13.50	13.50	0.68	1.64	0.78	0.78	9.64	22.73	10.50	10.50	0.00	0.00	-12.23	-53.81
Uzbekistan	1.40	1.40	1.40	1.40	4.64	4.50	4.79	4.79	6.50	6.30	6.70	6.70	0.00	0.00	0.40	6.35
<b>EU-27</b>	25.88	25.70	25.50	25.50	5.26	5.34	5.17	5.17	136.02	137.23	131.73	131.73	0.00	0.00	-5.50	-4.01
France	5.43	5.41	5.31	5.31	7.05	6.66	7.18	7.18	38.26	35.99	38.15	38.15	0.00	0.00	2.15	5.98
Germany	3.23	3.25	3.06	3.06	7.37	7.01	7.33	7.33	23.78	22.78	22.43	22.43	0.00	0.00	-0.35	-1.55
United Kingdom	1.94	1.97	2.00	2.00	7.67	7.75	6.75	6.75	14.88	15.26	13.50	13.50	0.00	0.00	-1.76	-11.52
Poland	2.14	2.26	2.10	2.10	4.39	4.14	4.05	4.05	9.41	9.34	8.50	8.50	0.00	0.00	-0.84	-8.99
Spain	1.95	1.99	2.17	2.17	3.05	3.46	2.36	2.36	5.94	6.90	5.11	5.11	0.00	0.00	-1.79	-25.91
Italy	1.81	1.65	1.85	1.85	3.59	3.71	3.86	3.86	6.49	6.12	7.15	7.15	0.00	0.00	1.03	16.83
Denmark	0.77	0.74	0.62	0.62	6.61	6.59	7.26	7.26	5.06	4.84	4.50	4.50	0.00	0.00	-0.34	-7.04
Hungary	1.01	0.98	1.08	1.08	3.76	4.18	3.61	3.61	3.80	4.10	3.90	3.90	0.00	0.00	-0.20	-4.88
Romania	2.15	1.95	1.83	1.83	2.69	3.65	2.70	2.70	5.78	7.10	4.95	4.95	0.00	0.00	-2.15	-30.28
Bulgaria	1.13	1.14	1.09	1.09	3.62	3.92	3.91	3.91	4.09	4.46	4.25	4.25	0.00	0.00	-0.21	-4.67
<b>Canada</b>	8.30	8.55	9.50	9.50	2.81	2.96	2.86	2.86	23.30	25.29	27.20	27.20	0.00	0.00	1.91	7.56
<b>Australia</b>	13.50	13.96	13.30	13.30	2.03	2.14	1.65	1.65	27.41	29.92	22.00	22.00	0.00	0.00	-7.92	-26.48
<b>Middle East</b>																
Turkey	8.00	7.70	7.80	7.80	2.13	2.44	1.99	1.99	17.00	18.80	15.50	15.50	0.00	0.00	-3.30	-17.55
Iran	7.04	6.80	7.00	7.00	2.14	1.99	2.00	2.00	15.03	13.50	14.00	14.00	0.00	0.00	0.50	3.70
Syria	1.35	1.60	1.60	1.60	2.67	2.41	2.31	2.31	3.60	3.85	3.70	3.70	0.00	0.00	-0.15	-3.90
<b>North Africa</b>																
Egypt	1.26	1.28	1.35	1.35	5.71	6.56	6.30	6.30	7.20	8.40	8.50	8.50	0.00	0.00	0.10	1.19
Morocco	2.85	3.04	3.14	3.14	1.71	1.91	1.08	1.08	4.89	5.80	3.40	3.40	0.00	0.00	-2.40	-41.38
<b>Argentina</b>	4.85	5.17	3.80	3.70	3.55	3.00	3.03	2.97	17.20	15.50	11.50	11.00	-0.50	-4.35	-4.50	-29.03
<b>Others</b>	18.25	18.21	17.41	17.41	2.33	2.45	2.48	2.48	42.47	44.58	43.18	43.18	0.00	0.00	-1.40	-3.13

World and Selected Countries and Regions



**Table 03 Total Coarse Grain Area, Yield, and Production**

Country / Region	Area (Million hectares)				Yield (Metric tons per hectare)				Production (Million metric tons)				Change in Production			
	Prel.		2012/13 Proj.		Prel.		2012/13 Proj.		Prel.		2012/13 Proj.		From last month		From last year	
	2010/11	2011/12	Dec	Jan	2010/11	2011/12	Dec	Jan	2010/11	2011/12	Dec	Jan	MMT	Percent	MMT	Percent
<b>World</b>	303.67	311.61	315.99	315.54	3.62	3.70	3.54	3.55	1,099.32	1,154.40	1,118.95	1,121.23	2.28	0.20	-33.17	-2.87
<b>United States</b>	36.52	36.96	39.37	39.20	9.04	8.76	7.24	7.30	330.24	323.73	284.84	286.01	1.17	0.41	-37.72	-11.65
<b>Total Foreign</b>	267.15	274.65	276.62	276.33	2.88	3.02	3.02	3.02	769.08	830.67	834.11	835.22	1.12	0.13	4.56	0.55
<b>China</b>	34.58	35.71	37.17	37.17	5.30	5.59	5.79	5.79	183.40	199.66	215.01	215.01	0.00	0.00	15.35	7.69
<b>South America</b>																
Brazil	14.86	16.23	16.76	16.76	4.06	4.68	4.39	4.45	60.38	75.88	73.49	74.49	1.00	1.36	-1.39	-1.83
Argentina	5.81	6.02	6.58	6.38	5.72	5.00	5.90	6.13	33.26	30.11	38.85	39.15	0.30	0.77	9.05	30.05
<b>EU-27</b>	29.77	29.91	30.58	30.58	4.72	4.93	4.59	4.59	140.50	147.44	140.22	140.22	0.00	0.00	-7.22	-4.90
France	3.77	3.77	4.01	4.01	7.23	7.35	7.43	7.43	27.24	27.69	29.80	29.80	0.00	0.00	2.12	7.65
Germany	3.29	3.24	3.45	3.45	6.16	5.90	6.61	6.61	20.26	19.14	22.83	22.83	0.00	0.00	3.70	19.31
Poland	5.49	5.46	5.54	5.54	3.21	3.17	3.44	3.44	17.63	17.29	19.05	19.05	0.00	0.00	1.76	10.16
Spain	3.92	3.80	3.77	3.77	3.30	3.73	2.80	2.80	12.94	14.17	10.56	10.56	0.00	0.00	-3.61	-25.49
Italy	1.38	1.39	1.45	1.45	7.31	7.73	6.40	6.40	10.09	10.77	9.26	9.26	0.00	0.00	-1.52	-14.07
Hungary	1.56	1.65	1.52	1.52	5.46	5.85	3.78	3.78	8.54	9.64	5.76	5.76	0.00	0.00	-3.88	-40.22
United Kingdom	1.07	1.11	1.16	1.16	5.65	5.65	5.47	5.47	6.07	6.25	6.32	6.32	0.00	0.00	0.07	1.09
Romania	3.03	3.22	3.15	3.15	3.46	3.84	2.38	2.38	10.46	12.38	7.49	7.49	0.00	0.00	-4.89	-39.53
<b>Former Soviet Union - 12</b>																
Russia	9.78	14.38	14.15	14.05	1.68	2.30	2.07	2.02	16.42	33.08	29.35	28.35	-1.00	-3.41	-4.73	-14.29
Ukraine	7.64	7.97	8.45	8.45	2.81	4.18	3.38	3.38	21.44	33.34	28.56	28.56	0.00	0.00	-4.78	-14.33
Kazakhstan	1.94	1.86	1.95	1.95	1.02	1.83	1.17	1.17	1.97	3.40	2.28	2.28	0.00	0.00	-1.12	-33.02
<b>Africa</b>	79.63	80.19	79.93	79.93	1.38	1.32	1.38	1.38	110.27	105.88	110.49	110.49	0.00	0.00	4.61	4.35
Nigeria	16.25	16.50	16.60	16.60	1.43	1.44	1.45	1.45	23.25	23.80	24.01	24.01	0.00	0.00	0.21	0.88
South Africa	3.73	4.00	4.16	4.16	3.03	3.23	3.36	3.36	11.32	12.91	13.97	13.97	0.00	0.00	1.06	8.20
Ethiopia	5.19	5.47	5.34	5.34	2.02	2.09	2.12	2.12	10.47	11.44	11.33	11.33	0.00	0.00	-0.11	-0.92
Egypt	1.06	0.91	0.96	0.96	7.13	7.21	7.15	7.15	7.56	6.56	6.86	6.86	0.00	0.00	0.30	4.57
<b>India</b>	27.43	26.58	24.07	24.07	1.58	1.58	1.56	1.56	43.37	42.06	37.61	37.61	0.00	0.00	-4.45	-10.58
<b>Southeast Asia</b>																
Indonesia	2.85	3.14	3.15	3.15	2.39	2.83	2.83	2.83	6.80	8.90	8.90	8.90	0.00	0.00	0.00	0.00
Philippines	2.63	2.56	2.62	2.59	2.76	2.79	2.81	2.79	7.27	7.13	7.35	7.22	-0.14	-1.84	0.09	1.19
Thailand	1.03	1.04	1.08	1.08	4.14	4.18	4.21	4.21	4.25	4.35	4.55	4.55	0.00	0.00	0.20	4.60
<b>Mexico</b>	9.28	8.04	8.38	8.38	3.15	3.20	3.31	3.31	29.23	25.71	27.78	27.78	0.00	0.00	2.07	8.06
<b>Canada</b>	4.70	4.93	5.31	5.31	4.81	4.64	4.57	4.57	22.60	22.89	24.26	24.26	0.00	0.00	1.37	5.99
<b>Australia</b>	5.27	5.31	5.49	5.49	2.18	2.32	2.00	2.00	11.47	12.33	10.95	10.95	0.00	0.00	-1.37	-11.14
<b>Turkey</b>	4.17	3.99	4.16	4.16	2.44	2.83	2.54	2.54	10.19	11.28	10.58	10.58	0.00	0.00	-0.70	-6.21
<b>Others</b>	25.77	26.80	26.81	26.86	2.57	2.51	2.38	2.41	66.27	67.24	63.88	64.83	0.95	1.49	-2.41	-3.58

World and Selected Countries and Regions

**Table 04 Corn Area, Yield, and Production**

Country / Region	Area (Million hectares)				Yield (Metric tons per hectare)				Production (Million metric tons)				Change in Production			
	Prel.		2012/13 Proj.		Prel.		2012/13 Proj.		Prel.		2012/13 Proj.		From last month		From last year	
	2010/11	2011/12	Dec	Jan	2010/11	2011/12	Dec	Jan	2010/11	2011/12	Dec	Jan	MMT	Percent	MMT	Percent
<b>World</b>	163.81	169.72	174.64	174.22	5.08	5.21	4.86	4.89	832.33	883.54	849.09	852.30	3.22	0.38	-31.23	-3.54
<b>United States</b>	32.96	33.99	35.50	35.36	9.59	9.24	7.67	7.74	316.17	313.95	272.43	273.83	1.40	0.51	-40.12	-12.78
<b>Total Foreign</b>	130.85	135.73	139.14	138.86	3.94	4.20	4.14	4.17	516.16	569.59	576.66	578.47	1.82	0.31	8.88	1.56
<b>China</b>	32.50	33.54	34.95	34.95	5.45	5.75	5.95	5.95	177.25	192.78	208.00	208.00	0.00	0.00	15.22	7.90
<b>South America</b>																
Brazil	13.80	15.20	15.50	15.50	4.16	4.80	4.52	4.58	57.40	73.00	70.00	71.00	1.00	1.43	-2.00	-2.74
Argentina	3.75	3.60	3.70	3.50	6.72	5.83	7.43	8.00	25.20	21.00	27.50	28.00	0.50	1.82	7.00	33.33
<b>Mexico</b>	7.02	6.07	6.50	6.50	3.00	3.08	3.18	3.18	21.06	18.68	20.70	20.70	0.00	0.00	2.02	10.81
<b>EU-27</b>	8.02	8.81	8.96	8.96	7.00	7.51	6.10	6.10	56.17	66.17	54.67	54.67	0.00	0.00	-11.50	-17.38
France	1.53	1.60	1.69	1.69	9.00	9.97	9.10	9.10	13.79	15.91	15.35	15.35	0.00	0.00	-0.56	-3.54
Italy	0.92	0.97	0.97	0.97	9.29	9.51	7.84	7.84	8.50	9.22	7.60	7.60	0.00	0.00	-1.62	-17.57
Hungary	1.07	1.20	1.05	1.05	6.55	6.75	4.05	4.05	7.00	8.10	4.25	4.25	0.00	0.00	-3.85	-47.53
Romania	2.25	2.55	2.50	2.50	3.87	4.12	2.40	2.40	8.70	10.50	6.00	6.00	0.00	0.00	-4.50	-42.86
Poland	0.33	0.33	0.54	0.54	5.97	7.18	6.67	6.67	1.99	2.39	3.60	3.60	0.00	0.00	1.21	50.50
<b>India</b>	8.60	8.67	8.50	8.50	2.53	2.49	2.35	2.35	21.73	21.57	20.00	20.00	0.00	0.00	-1.57	-7.28
<b>Canada</b>	1.24	1.27	1.42	1.42	9.75	8.93	9.20	9.20	12.04	11.36	13.06	13.06	0.00	0.00	1.70	14.97
<b>Indonesia</b>	2.85	3.14	3.15	3.15	2.39	2.83	2.83	2.83	6.80	8.90	8.90	8.90	0.00	0.00	0.00	0.00
<b>Ukraine</b>	2.65	3.54	4.40	4.40	4.50	6.44	4.66	4.66	11.92	22.84	20.50	20.50	0.00	0.00	-2.34	-10.24
<b>Serbia</b>	1.23	1.26	1.25	1.30	5.53	5.00	3.12	2.92	6.80	6.30	3.90	3.80	-0.10	-2.56	-2.50	-39.68
<b>Egypt</b>	0.85	0.70	0.75	0.75	7.65	7.86	7.73	7.73	6.50	5.50	5.80	5.80	0.00	0.00	0.30	5.45
<b>Philippines</b>	2.63	2.56	2.62	2.59	2.76	2.79	2.81	2.79	7.27	7.13	7.35	7.22	-0.14	-1.84	0.09	1.19
<b>Vietnam</b>	1.08	1.10	1.15	1.15	4.30	4.50	4.61	4.61	4.65	4.95	5.30	5.30	0.00	0.00	0.35	7.07
<b>Thailand</b>	1.00	1.01	1.05	1.05	4.20	4.26	4.29	4.29	4.20	4.30	4.50	4.50	0.00	0.00	0.20	4.65
<b>Russia</b>	1.02	1.60	1.90	1.80	3.01	4.34	4.47	4.44	3.08	6.96	8.50	8.00	-0.50	-5.88	1.04	14.91
<b>Sub-Saharan Africa</b>																
South Africa	2.86	3.15	3.30	3.30	3.82	3.95	4.09	4.09	10.92	12.42	13.50	13.50	0.00	0.00	1.08	8.72
Nigeria	5.00	5.15	5.20	5.20	1.76	1.80	1.81	1.81	8.80	9.25	9.41	9.41	0.00	0.00	0.16	1.73
Ethiopia	1.96	2.15	2.10	2.10	2.49	2.51	2.57	2.57	4.90	5.40	5.40	5.40	0.00	0.00	0.00	0.00
Zimbabwe	1.35	1.60	0.96	0.96	0.74	0.91	1.01	1.01	1.00	1.45	0.97	0.97	0.00	0.00	-0.49	-33.45
<b>Turkey</b>	0.49	0.45	0.53	0.53	7.35	8.00	8.38	8.38	3.60	3.60	4.40	4.40	0.00	0.00	0.80	22.22
<b>Others</b>	30.95	31.15	31.25	31.25	2.10	2.12	2.06	2.09	64.89	66.03	64.30	65.35	1.05	1.63	-0.68	-1.03

World and Selected Countries and Regions

**Table 05 Barley Area, Yield, and Production**

Country / Region	Area (Million hectares)				Yield (Metric tons per hectare)				Production (Million metric tons)				Change in Production			
	Prel.		2012/13 Proj.		Prel.		2012/13 Proj.		Prel.		2012/13 Proj.		From last month		From last year	
	2010/11	2011/12	Dec	Jan	2010/11	2011/12	Dec	Jan	2010/11	2011/12	Dec	Jan	MMT	Percent	MMT	Percent
<b>World</b>	47.51	49.80	51.05	51.05	2.58	2.70	2.55	2.54	122.69	134.26	130.11	129.81	-0.30	-0.23	-4.44	-3.31
<b>United States</b>	1.00	0.91	1.31	1.31	3.93	3.74	3.65	3.65	3.93	3.39	4.80	4.80	0.00	0.00	1.40	41.39
<b>Total Foreign</b>	46.51	48.90	49.74	49.74	2.55	2.68	2.52	2.51	118.77	130.86	125.32	125.02	-0.30	-0.24	-5.85	-4.47
<b>Russia</b>	4.97	7.70	7.70	7.70	1.68	2.20	1.82	1.81	8.35	16.94	14.00	13.90	-0.10	-0.71	-3.04	-17.94
<b>EU-27</b>	12.48	11.94	12.60	12.60	4.29	4.31	4.32	4.32	53.51	51.45	54.41	54.41	0.00	0.00	2.96	5.75
Germany	1.64	1.60	1.68	1.68	6.29	5.47	6.19	6.19	10.33	8.73	10.42	10.42	0.00	0.00	1.69	19.33
France	1.59	1.55	1.68	1.68	6.42	5.68	6.71	6.71	10.18	8.78	11.30	11.30	0.00	0.00	2.52	28.74
Spain	2.89	2.70	2.69	2.69	2.83	3.09	2.16	2.16	8.15	8.33	5.80	5.80	0.00	0.00	-2.53	-30.36
United Kingdom	0.92	0.97	1.01	1.01	5.70	5.68	5.47	5.47	5.25	5.49	5.50	5.50	0.00	0.00	0.01	0.11
Denmark	0.59	0.60	0.71	0.71	5.04	5.43	5.63	5.63	2.99	3.26	4.00	4.00	0.00	0.00	0.74	22.55
Poland	1.12	1.02	1.15	1.15	3.16	3.27	3.48	3.48	3.53	3.34	4.00	4.00	0.00	0.00	0.66	19.90
Czech Republic	0.39	0.37	0.38	0.38	4.08	4.88	4.34	4.34	1.58	1.81	1.66	1.66	0.00	0.00	-0.16	-8.60
Finland	0.41	0.41	0.47	0.47	3.28	3.71	3.51	3.51	1.34	1.52	1.66	1.66	0.00	0.00	0.13	8.81
Sweden	0.32	0.32	0.38	0.38	3.86	4.29	4.63	4.63	1.23	1.39	1.74	1.74	0.00	0.00	0.35	25.18
Italy	0.27	0.25	0.30	0.30	3.47	3.64	3.56	3.56	0.94	0.90	1.05	1.05	0.00	0.00	0.15	16.67
Hungary	0.29	0.26	0.27	0.27	3.37	3.79	3.52	3.52	0.97	0.99	0.95	0.95	0.00	0.00	-0.04	-3.94
Austria	0.17	0.15	0.15	0.15	4.60	5.61	5.50	5.50	0.78	0.86	0.83	0.83	0.00	0.00	-0.03	-3.96
<b>Ukraine</b>	4.32	3.68	3.30	3.30	1.97	2.47	2.03	2.03	8.48	9.10	6.70	6.70	0.00	0.00	-2.40	-26.36
<b>Canada</b>	2.39	2.40	2.75	2.75	3.19	3.29	2.91	2.91	7.63	7.89	8.01	8.01	0.00	0.00	0.12	1.50
<b>Australia</b>	3.68	3.77	3.88	3.88	2.17	2.21	1.81	1.81	8.00	8.35	7.00	7.00	0.00	0.00	-1.35	-16.16
<b>Turkey</b>	3.35	3.20	3.30	3.30	1.76	2.19	1.67	1.67	5.90	7.00	5.50	5.50	0.00	0.00	-1.50	-21.43
<b>China</b>	0.58	0.65	0.68	0.68	3.40	3.85	3.82	3.82	1.97	2.50	2.60	2.60	0.00	0.00	0.10	4.00
<b>Iran</b>	1.58	1.60	1.68	1.68	2.03	1.81	2.03	2.03	3.21	2.90	3.40	3.40	0.00	0.00	0.50	17.24
<b>Morocco</b>	1.92	2.03	1.85	1.85	1.34	1.16	0.59	0.59	2.57	2.34	1.10	1.10	0.00	0.00	-1.24	-52.99
<b>Kazakhstan</b>	1.58	1.55	1.60	1.60	0.83	1.67	0.94	0.94	1.31	2.59	1.50	1.50	0.00	0.00	-1.09	-42.15
<b>Ethiopia</b>	1.05	1.01	1.02	1.02	1.46	1.57	1.55	1.55	1.53	1.59	1.58	1.58	0.00	0.00	-0.01	-0.75
<b>Belarus</b>	0.69	0.70	0.65	0.65	2.85	2.87	3.08	3.08	1.97	2.01	2.00	2.00	0.00	0.00	-0.01	-0.65
<b>India</b>	0.62	0.78	0.77	0.77	2.18	2.13	2.09	2.09	1.35	1.66	1.61	1.61	0.00	0.00	-0.05	-3.01
<b>Argentina</b>	0.75	1.16	1.50	1.50	3.93	3.88	3.80	3.67	2.95	4.50	5.70	5.50	-0.20	-3.51	1.00	22.22
<b>Mexico</b>	0.27	0.22	0.21	0.21	2.51	2.23	2.67	2.67	0.67	0.49	0.56	0.56	0.00	0.00	0.08	15.61
<b>Iraq</b>	1.25	1.13	0.60	0.60	0.92	0.88	0.83	0.83	1.15	1.00	0.50	0.50	0.00	0.00	-0.50	-50.00
<b>Algeria</b>	1.00	1.00	1.00	1.00	1.50	1.35	1.70	1.70	1.50	1.35	1.70	1.70	0.00	0.00	0.35	25.93
<b>Others</b>	4.03	4.37	4.65	4.65	1.67	1.65	1.60	1.60	6.72	7.20	7.45	7.45	0.00	0.00	0.25	3.40

World and Selected Countries and Regions

**Table 06 Oats Area, Yield, and Production**

Country / Region	Area (Million hectares)				Yield (Metric tons per hectare)				Production (Million metric tons)				Change in Production			
	Prel.		2012/13 Proj.		Prel.		2012/13 Proj.		Prel.		2012/13 Proj.		From last month		From last year	
	2010/11	2011/12	Dec	Jan	2010/11	2011/12	Dec	Jan	2010/11	2011/12	Dec	Jan	MMT	Percent	MMT	Percent
<b>World</b>	9.86	10.35	10.11	10.11	2.01	2.19	2.04	2.04	19.82	22.64	20.63	20.63	0.00	0.00	-2.01	-8.90
<b>United States</b>	0.51	0.38	0.42	0.42	2.31	2.05	2.20	2.20	1.18	0.78	0.93	0.93	0.00	0.00	0.15	19.26
<b>Total Foreign</b>	9.35	9.97	9.69	9.69	1.99	2.19	2.03	2.03	18.64	21.86	19.70	19.70	0.00	0.00	-2.16	-9.90
<b>Russia</b>	2.24	2.93	2.80	2.80	1.44	1.82	1.43	1.43	3.22	5.33	4.00	4.00	0.00	0.00	-1.33	-24.98
<b>Canada</b>	0.89	1.08	0.96	0.96	2.75	2.91	2.79	2.79	2.45	3.16	2.68	2.68	0.00	0.00	-0.48	-15.14
<b>EU-27</b>	2.71	2.68	2.66	2.66	2.75	2.93	2.85	2.85	7.45	7.86	7.58	7.58	0.00	0.00	-0.28	-3.55
Poland	0.54	0.55	0.55	0.55	2.47	2.46	2.40	2.40	1.34	1.35	1.32	1.32	0.00	0.00	-0.03	-2.44
Finland	0.28	0.32	0.32	0.32	2.91	3.42	3.44	3.44	0.81	1.10	1.10	1.10	0.00	0.00	0.00	-0.18
Spain	0.51	0.49	0.45	0.45	2.00	2.20	1.48	1.48	1.02	1.08	0.66	0.66	0.00	0.00	-0.42	-38.68
Germany	0.14	0.14	0.15	0.15	4.24	4.38	5.21	5.21	0.60	0.63	0.76	0.76	0.00	0.00	0.13	21.21
Sweden	0.17	0.18	0.18	0.18	3.37	3.84	3.89	3.89	0.56	0.70	0.70	0.70	0.00	0.00	0.00	0.29
United Kingdom	0.12	0.11	0.12	0.12	5.52	5.62	5.63	5.63	0.69	0.61	0.68	0.68	0.00	0.00	0.06	10.11
France	0.10	0.08	0.08	0.08	4.57	4.09	4.75	4.75	0.45	0.32	0.38	0.38	0.00	0.00	0.06	19.12
Italy	0.13	0.11	0.12	0.12	2.22	2.43	2.38	2.38	0.29	0.27	0.30	0.30	0.00	0.00	0.03	10.49
Denmark	0.05	0.05	0.05	0.05	5.83	4.80	4.80	4.80	0.27	0.24	0.24	0.24	0.00	0.00	0.00	0.00
Romania	0.19	0.18	0.18	0.18	1.71	1.94	1.81	1.81	0.33	0.35	0.33	0.33	0.00	0.00	-0.03	-7.14
Czech Republic	0.05	0.05	0.05	0.05	2.65	3.73	3.33	3.33	0.14	0.17	0.15	0.15	0.00	0.00	-0.02	-10.71
Hungary	0.05	0.05	0.06	0.06	2.41	2.45	2.36	2.36	0.12	0.13	0.13	0.13	0.00	0.00	0.00	0.00
Austria	0.03	0.03	0.03	0.03	3.63	4.40	4.40	4.40	0.10	0.11	0.11	0.11	0.00	0.00	0.00	0.00
Ireland	0.02	0.02	0.02	0.02	7.63	8.00	7.20	7.20	0.15	0.17	0.14	0.14	0.00	0.00	-0.02	-14.29
Lithuania	0.07	0.07	0.07	0.07	1.34	2.00	2.00	2.00	0.09	0.13	0.13	0.13	0.00	0.00	0.00	0.00
<b>Australia</b>	0.83	0.73	0.70	0.70	1.37	1.75	1.50	1.50	1.13	1.27	1.05	1.05	0.00	0.00	-0.22	-17.58
<b>Ukraine</b>	0.31	0.29	0.30	0.30	1.47	1.90	1.83	1.83	0.46	0.55	0.55	0.55	0.00	0.00	0.00	0.00
<b>China</b>	0.20	0.20	0.20	0.20	2.69	3.00	2.90	2.90	0.53	0.60	0.58	0.58	0.00	0.00	-0.02	-3.33
<b>Belarus</b>	0.18	0.17	0.20	0.20	2.40	2.70	3.00	3.00	0.44	0.45	0.60	0.60	0.00	0.00	0.15	33.93
<b>Brazil</b>	0.15	0.15	0.15	0.15	2.46	2.40	2.40	2.40	0.38	0.37	0.37	0.37	0.00	0.00	0.00	0.00
<b>Argentina</b>	0.29	0.22	0.20	0.20	2.32	1.57	2.00	2.00	0.66	0.35	0.40	0.40	0.00	0.00	0.06	15.94
<b>Chile</b>	0.11	0.10	0.11	0.11	5.32	5.00	5.33	5.33	0.56	0.51	0.56	0.56	0.00	0.00	0.06	10.89
<b>Norway</b>	0.08	0.07	0.07	0.07	3.93	3.10	3.10	3.10	0.30	0.22	0.22	0.22	0.00	0.00	0.00	0.00
<b>Turkey</b>	0.09	0.10	0.10	0.10	2.34	2.21	2.21	2.21	0.20	0.21	0.21	0.21	0.00	0.00	0.00	0.00
<b>Kazakhstan</b>	0.17	0.15	0.15	0.15	0.77	1.78	1.33	1.33	0.13	0.26	0.20	0.20	0.00	0.00	-0.06	-22.48
<b>Serbia</b>	0.07	0.07	0.05	0.05	1.85	1.85	1.70	1.70	0.12	0.12	0.09	0.09	0.00	0.00	-0.04	-29.17
<b>Others</b>	1.04	1.04	1.04	1.04	0.58	0.58	0.59	0.59	0.61	0.61	0.61	0.61	0.00	0.00	0.00	0.00

World and Selected Countries and Regions



**Table 07 Rye Area, Yield, and Production**

Country / Region	Area (Million hectares)				Yield (Metric tons per hectare)				Production (Million metric tons)				Change in Production			
	Prel.		2012/13 Proj.		Prel.		2012/13 Proj.		Prel.		2012/13 Proj.		From last month		From last year	
	2010/11	2011/12	Dec	Jan	2010/11	2011/12	Dec	Jan	2010/11	2011/12	Dec	Jan	MMT	Percent	MMT	Percent
<b>World</b>	4.85	4.92	5.17	5.17	2.35	2.48	2.73	2.66	11.42	12.18	14.11	13.76	-0.35	-2.48	1.58	13.00
<b>United States</b>	0.11	0.10	0.10	0.10	1.77	1.64	1.76	1.76	0.19	0.16	0.18	0.18	0.00	0.00	0.02	9.32
<b>Total Foreign</b>	4.75	4.82	5.07	5.07	2.37	2.50	2.75	2.68	11.23	12.02	13.94	13.59	-0.35	-2.51	1.57	13.05
<b>EU-27</b>	2.32	2.28	2.28	2.28	3.26	3.03	3.68	3.68	7.57	6.92	8.39	8.39	0.00	0.00	1.47	21.29
Poland	1.06	1.09	1.00	1.00	2.68	2.40	2.87	2.87	2.85	2.60	2.87	2.87	0.00	0.00	0.27	10.23
Germany	0.63	0.61	0.71	0.71	4.63	4.11	5.48	5.48	2.90	2.52	3.89	3.89	0.00	0.00	1.37	54.42
Spain	0.14	0.15	0.16	0.16	1.90	2.46	1.57	1.57	0.26	0.37	0.25	0.25	0.00	0.00	-0.11	-31.06
Lithuania	0.08	0.05	0.05	0.05	2.54	1.67	2.50	2.50	0.21	0.09	0.13	0.13	0.00	0.00	0.04	49.43
Latvia	0.06	0.04	0.04	0.04	2.75	2.50	2.76	2.76	0.16	0.10	0.11	0.11	0.00	0.00	0.01	10.53
France	0.03	0.03	0.03	0.03	5.21	4.43	4.97	4.97	0.15	0.12	0.16	0.16	0.00	0.00	0.04	28.23
Denmark	0.05	0.06	0.03	0.03	4.90	5.07	4.84	4.84	0.26	0.29	0.15	0.15	0.00	0.00	-0.14	-48.98
Czech Republic	0.03	0.03	0.03	0.03	3.93	4.68	4.17	4.17	0.12	0.12	0.13	0.13	0.00	0.00	0.01	6.84
Austria	0.05	0.05	0.05	0.05	3.50	4.39	4.35	4.35	0.16	0.20	0.20	0.20	0.00	0.00	0.00	-0.99
Sweden	0.03	0.03	0.03	0.03	4.72	5.08	5.20	5.20	0.12	0.13	0.13	0.13	0.00	0.00	0.00	-1.52
Hungary	0.04	0.03	0.04	0.04	2.08	2.30	2.20	2.20	0.08	0.08	0.08	0.08	0.00	0.00	0.00	1.32
Slovakia	0.02	0.01	0.02	0.02	2.12	3.31	2.71	2.71	0.04	0.04	0.05	0.05	0.00	0.00	0.00	6.98
Finland	0.03	0.03	0.02	0.02	2.72	2.80	3.00	3.00	0.07	0.07	0.06	0.06	0.00	0.00	-0.01	-14.29
United Kingdom	0.01	0.01	0.01	0.01	6.20	7.00	7.00	7.00	0.03	0.04	0.04	0.04	0.00	0.00	0.00	0.00
Romania	0.02	0.01	0.01	0.01	2.27	2.55	2.27	2.27	0.03	0.03	0.03	0.03	0.00	0.00	0.00	-10.71
Greece	0.02	0.02	0.02	0.02	1.83	1.83	1.83	1.83	0.03	0.03	0.03	0.03	0.00	0.00	0.00	0.00
Portugal	0.02	0.02	0.02	0.02	0.90	0.86	0.79	0.79	0.02	0.02	0.02	0.02	0.00	0.00	0.00	-16.67
<b>Russia</b>	1.38	1.52	1.45	1.45	1.19	1.95	1.72	1.48	1.64	2.97	2.50	2.15	-0.35	-14.00	-0.82	-27.54
<b>Belarus</b>	0.35	0.34	0.60	0.60	2.09	2.39	2.50	2.50	0.74	0.80	1.50	1.50	0.00	0.00	0.70	86.57
<b>Ukraine</b>	0.28	0.29	0.30	0.30	1.66	1.93	2.17	2.17	0.46	0.55	0.65	0.65	0.00	0.00	0.10	18.18
<b>Canada</b>	0.10	0.10	0.13	0.13	2.44	2.51	2.72	2.72	0.24	0.24	0.34	0.34	0.00	0.00	0.10	41.08
<b>Turkey</b>	0.14	0.14	0.14	0.14	2.60	2.50	2.50	2.50	0.37	0.35	0.35	0.35	0.00	0.00	0.00	0.00
<b>Argentina</b>	0.02	0.03	0.03	0.03	1.67	1.41	1.60	1.60	0.04	0.05	0.04	0.04	0.00	0.00	-0.01	-11.11
<b>Kazakhstan</b>	0.05	0.03	0.05	0.05	0.82	1.12	1.00	1.00	0.04	0.03	0.05	0.05	0.00	0.00	0.02	78.57
<b>Australia</b>	0.04	0.04	0.04	0.04	0.57	0.57	0.57	0.57	0.02	0.02	0.02	0.02	0.00	0.00	0.00	0.00
<b>Switzerland</b>	0.00	0.00	0.00	0.00	6.67	6.67	6.67	6.67	0.02	0.02	0.02	0.02	0.00	0.00	0.00	0.00
<b>Others</b>	0.06	0.06	0.06	0.06	1.50	1.21	1.21	1.21	0.09	0.08	0.08	0.08	0.00	0.00	0.00	0.00

World and Selected Countries and Regions

**Table 08 Sorghum Area, Yield, and Production**

Country / Region	Area (Million hectares)				Yield (Metric tons per hectare)				Production (Million metric tons)				Change in Production			
	Prel.		2012/13 Proj.		Prel.		2012/13 Proj.		Prel.		2012/13 Proj.		From last month		From last year	
	2010/11	2011/12	Dec	Jan	2010/11	2011/12	Dec	Jan	2010/11	2011/12	Dec	Jan	MMT	Percent	MMT	Percent
<b>World</b>	38.83	37.86	38.84	38.81	1.61	1.43	1.53	1.52	62.48	54.03	59.30	59.06	-0.24	-0.40	5.03	9.30
<b>United States</b>	1.95	1.59	2.03	2.01	4.51	3.43	3.21	3.13	8.78	5.45	6.51	6.27	-0.24	-3.61	0.83	15.15
<b>Total Foreign</b>	36.88	36.27	36.81	36.81	1.46	1.34	1.43	1.43	53.70	48.59	52.79	52.79	0.00	0.00	4.20	8.65
<b>Sub-Saharan Africa</b>																
Nigeria	5.40	5.50	5.55	5.55	1.25	1.25	1.24	1.24	6.75	6.85	6.90	6.90	0.00	0.00	0.05	0.73
Sudan	6.20	5.60	5.60	5.60	0.74	0.37	0.68	0.68	4.61	2.09	3.80	3.80	0.00	0.00	1.71	81.91
Ethiopia	1.78	1.87	1.80	1.80	1.95	2.02	2.06	2.06	3.47	3.78	3.70	3.70	0.00	0.00	-0.08	-2.14
Burkina	1.62	1.62	1.62	1.62	1.20	0.99	1.11	1.11	1.95	1.60	1.80	1.80	0.00	0.00	0.20	12.50
Tanzania	0.62	0.88	0.90	0.90	1.29	0.90	0.84	0.84	0.80	0.79	0.76	0.76	0.00	0.00	-0.03	-3.55
Niger	1.50	1.50	1.50	1.50	0.87	0.47	0.67	0.67	1.30	0.70	1.00	1.00	0.00	0.00	0.30	42.86
Uganda	0.31	0.31	0.31	0.31	1.61	1.61	1.61	1.61	0.50	0.50	0.50	0.50	0.00	0.00	0.00	0.00
Mozambique	0.62	0.62	0.62	0.62	0.62	0.66	0.66	0.66	0.38	0.41	0.41	0.41	0.00	0.00	0.00	0.00
Ghana	0.34	0.34	0.34	0.34	1.06	0.96	1.03	1.03	0.36	0.33	0.35	0.35	0.00	0.00	0.03	7.69
South Africa	0.07	0.05	0.05	0.05	2.25	2.80	2.50	2.50	0.16	0.14	0.13	0.13	0.00	0.00	-0.01	-8.76
<b>South Asia</b>																
India	7.06	6.33	6.30	6.30	0.99	0.95	0.95	0.95	7.00	6.03	6.00	6.00	0.00	0.00	-0.03	-0.50
Pakistan	0.24	0.24	0.24	0.24	0.60	0.60	0.60	0.60	0.15	0.15	0.15	0.15	0.00	0.00	0.00	0.00
<b>South America</b>																
Argentina	1.00	1.00	1.15	1.15	4.40	4.20	4.52	4.52	4.40	4.20	5.20	5.20	0.00	0.00	1.00	23.81
Brazil	0.82	0.79	1.00	1.00	2.83	2.81	2.80	2.80	2.31	2.21	2.80	2.80	0.00	0.00	0.60	26.98
<b>Mexico</b>	1.92	1.68	1.60	1.60	3.84	3.82	4.00	4.00	7.39	6.43	6.40	6.40	0.00	0.00	-0.03	-0.39
<b>China</b>	0.55	0.58	0.60	0.60	4.48	4.48	4.42	4.42	2.46	2.60	2.65	2.65	0.00	0.00	0.05	1.92
<b>Australia</b>	0.63	0.66	0.76	0.76	3.06	3.38	3.16	3.16	1.94	2.22	2.40	2.40	0.00	0.00	0.18	7.96
<b>Egypt</b>	0.16	0.16	0.16	0.16	5.63	5.63	5.63	5.63	0.90	0.90	0.90	0.90	0.00	0.00	0.00	0.00
<b>EU-27</b>	0.11	0.11	0.10	0.10	5.57	6.06	5.49	5.49	0.63	0.67	0.56	0.56	0.00	0.00	-0.11	-16.79
France	0.05	0.04	0.04	0.04	5.50	6.41	5.80	5.80	0.29	0.28	0.24	0.24	0.00	0.00	-0.04	-15.60
Italy	0.04	0.04	0.03	0.03	6.88	7.12	6.62	6.62	0.28	0.30	0.23	0.23	0.00	0.00	-0.07	-24.75
<b>Others</b>	5.93	6.44	6.61	6.61	1.06	0.93	0.97	0.97	6.26	6.01	6.39	6.39	0.00	0.00	0.38	6.38

World and Selected Countries and Regions

**Table 09 Rice Area, Yield, and Production**  
**World and Selected Countries and Regions**

Country / Region	Area (Million hectares)				Yield (Metric tons per hectare)				Production (Million metric tons)				Change in Production			
	Prel.		2012/13 Proj.		Prel.		2012/13 Proj.		Prel.		2012/13 Proj.		From last month		From last year	
	2010/11	2011/12	Dec	Jan	2010/11	2011/12	Dec	Jan	2010/11	2011/12	Dec	Jan	MMT	Percent	MMT	Percent
<b>World</b>	157.60	159.00	158.39	158.43	4.25	4.36	4.38	4.38	449.30	465.02	465.34	465.55	0.21	0.05	0.54	0.12
<b>United States</b>	1.46	1.06	1.08	1.08	7.54	7.92	8.32	8.35	7.59	5.87	6.33	6.36	0.03	0.46	0.49	8.35
<b>Total Foreign</b>	156.14	157.94	157.30	157.35	4.22	4.34	4.35	4.35	441.71	459.15	459.01	459.20	0.18	0.04	0.05	0.01
<b>East Asia</b>																
China	29.87	30.06	30.30	30.30	6.55	6.69	6.74	6.74	137.00	140.70	143.00	143.00	0.00	0.00	2.30	1.63
Japan	1.63	1.58	1.58	1.58	6.51	6.66	6.74	6.74	7.72	7.65	7.76	7.76	0.00	0.00	0.11	1.43
Korea, South	0.89	0.85	0.85	0.85	6.51	6.58	6.37	6.37	4.30	4.22	4.01	4.01	0.00	0.00	-0.22	-5.16
Korea, North	0.58	0.57	0.57	0.57	4.24	4.32	4.74	4.74	1.60	1.60	1.74	1.74	0.00	0.00	0.14	8.75
<b>South Asia</b>																
India	42.86	44.10	43.00	43.00	3.36	3.55	3.45	3.45	95.98	104.32	99.00	99.00	0.00	0.00	-5.32	-5.10
Bangladesh	11.70	11.72	11.65	11.65	4.06	4.31	4.35	4.35	31.70	33.70	33.80	33.80	0.00	0.00	0.10	0.30
Pakistan	2.10	2.75	2.60	2.70	3.57	3.55	3.87	3.78	5.00	6.50	6.70	6.80	0.10	1.49	0.30	4.62
<b>Southeast Asia</b>																
Indonesia	12.08	12.16	12.15	12.15	4.67	4.73	4.78	4.78	35.50	36.50	36.90	36.90	0.00	0.00	0.40	1.10
Vietnam	7.61	7.74	7.84	7.84	5.55	5.60	5.66	5.66	26.37	27.08	27.71	27.71	0.00	0.00	0.64	2.35
Thailand	10.67	11.00	10.94	10.94	2.88	2.82	2.84	2.84	20.26	20.46	20.50	20.50	0.00	0.00	0.04	0.20
Burma	7.00	6.50	6.35	6.35	2.35	2.60	2.65	2.65	10.53	10.82	10.75	10.75	0.00	0.00	-0.07	-0.61
Philippines	4.53	4.58	4.66	4.63	3.69	3.71	3.75	3.77	10.54	10.70	11.00	10.99	-0.01	-0.09	0.29	2.71
Cambodia	2.78	2.77	2.85	2.80	2.38	2.41	2.47	2.36	4.23	4.27	4.50	4.23	-0.28	-6.11	-0.04	-1.01
Laos	0.87	0.82	0.88	0.88	2.54	2.79	2.78	2.78	1.39	1.44	1.53	1.53	0.00	0.00	0.09	6.10
Malaysia	0.67	0.68	0.68	0.68	3.76	3.85	3.86	3.86	1.64	1.69	1.70	1.70	0.00	0.00	0.01	0.59
<b>South America</b>																
Brazil	2.83	2.43	2.40	2.42	4.83	4.78	4.79	4.96	9.30	7.89	7.82	8.16	0.34	4.35	0.27	3.45
Peru	0.39	0.34	0.40	0.40	7.28	7.10	7.25	7.25	1.94	1.67	2.00	2.00	0.00	0.00	0.34	20.11
<b>Sub-Saharan Africa</b>																
Nigeria	2.15	2.17	2.25	2.25	1.93	1.98	2.01	2.01	2.62	2.71	2.85	2.85	0.00	0.00	0.14	5.20
Madagascar	1.34	1.34	1.34	1.34	3.57	3.21	2.99	2.99	3.06	2.75	2.56	2.56	0.00	0.00	-0.19	-6.98
<b>EU-27</b>	0.48	0.48	0.47	0.47	6.49	6.23	6.32	6.32	2.17	2.09	2.04	2.04	0.00	0.00	-0.05	-2.30
Italy	0.25	0.25	0.24	0.24	6.40	5.82	6.06	6.06	1.11	1.01	1.01	1.01	0.00	0.00	0.00	0.40
Spain	0.12	0.12	0.11	0.11	7.53	7.54	7.42	7.42	0.65	0.64	0.59	0.59	0.00	0.00	-0.05	-8.07
<b>Egypt</b>	0.45	0.70	0.74	0.74	9.98	8.80	9.21	9.21	3.10	4.25	4.70	4.70	0.00	0.00	0.45	10.59
<b>Iran</b>	0.56	0.56	0.56	0.56	4.06	4.19	4.19	4.19	1.51	1.55	1.55	1.55	0.00	0.00	0.00	0.00
<b>Others</b>	12.10	12.05	12.26	12.26	3.03	3.08	3.06	3.07	24.25	24.60	24.90	24.93	0.03	0.11	0.33	1.32

Yield is on a rough basis, before the milling process  
Production is on a milled basis, after the milling process

**Table 10 Total Oilseed Area, Yield, and Production**

**World and Selected Countries and Regions**

Country / Region	Area (Million hectares)				Yield (Metric tons per hectare)				Production (Million metric tons)				Change in Production			
	Prel.		2012/13 Proj.		Prel.		2012/13 Proj.		Prel.		2012/13 Proj.		From last month		From last year	
	2010/11	2011/12	Dec	Jan	2010/11	2011/12	Dec	Jan	2010/11	2011/12	Dec	Jan	MMT	Percent	MMT	Percent
<b>World Total</b>	--	--	--	--	--	--	--	--	455.72	441.39	462.99	465.81	2.81	0.61	24.42	5.53
<b>Total Foreign</b>	--	--	--	--	--	--	--	--	355.35	349.04	371.66	373.09	1.44	0.39	24.05	6.89
<b>Oilseed, Copra</b>	--	--	--	--	--	--	--	--	6.02	5.54	5.66	5.66	0.00	0.00	0.12	2.15
<b>Oilseed, Palm Kernel</b>	--	--	--	--	--	--	--	--	12.55	13.31	14.15	14.15	0.00	0.00	0.84	6.32
<b>Major Oilseeds</b>	214.19	218.06	222.53	222.19	2.04	1.94	1.99	2.01	437.15	422.54	443.19	446.00	2.81	0.63	23.46	5.55
<b>United States</b>	37.18	35.14	36.94	36.71	2.70	2.63	2.47	2.53	100.38	92.35	91.34	92.71	1.38	1.51	0.37	0.40
<b>Foreign Oilseeds</b>	177.01	182.93	185.59	185.48	1.90	1.81	1.90	1.90	336.78	330.19	351.85	353.29	1.44	0.41	23.09	6.99
<b>South America</b>	51.87	52.31	56.49	56.25	2.79	2.37	2.77	2.79	144.83	123.97	156.41	156.91	0.50	0.32	32.94	26.57
Brazil	25.75	26.58	28.63	28.68	3.07	2.64	2.92	2.97	78.96	70.13	83.65	85.15	1.50	1.79	15.02	21.41
Argentina	20.91	20.23	22.19	21.89	2.59	2.21	2.70	2.69	54.22	44.75	59.82	58.82	-1.00	-1.67	14.08	31.46
Paraguay	3.03	3.19	3.27	3.28	2.43	1.45	2.43	2.42	7.36	4.62	7.95	7.95	0.00	0.00	3.33	72.07
Bolivia	1.17	1.25	1.26	1.26	2.10	2.03	2.10	2.10	2.45	2.54	2.65	2.65	0.00	0.00	0.11	4.33
<b>China</b>	26.65	26.24	24.88	25.08	2.18	2.25	2.24	2.26	58.10	59.03	55.80	56.58	0.79	1.41	-2.45	-4.15
<b>South Asia</b>	38.40	39.52	39.53	39.55	1.02	1.04	1.02	1.02	39.24	40.98	40.41	40.43	0.02	0.05	-0.55	-1.33
India	34.45	35.21	35.24	35.26	0.99	0.99	0.98	0.98	34.21	34.92	34.61	34.63	0.02	0.06	-0.29	-0.83
Pakistan	3.63	3.98	3.96	3.96	1.32	1.46	1.40	1.40	4.77	5.79	5.54	5.54	0.00	0.00	-0.26	-4.42
<b>EU-27</b>	11.38	11.67	11.11	11.08	2.56	2.50	2.45	2.45	29.14	29.21	27.16	27.16	0.00	0.00	-2.04	-7.00
France	2.21	2.34	2.32	2.32	2.98	3.15	3.11	3.11	6.59	7.36	7.23	7.23	0.00	0.00	-0.13	-1.77
Germany	1.51	1.36	1.33	1.33	3.84	2.90	3.67	3.67	5.80	3.93	4.90	4.90	0.00	0.00	0.97	24.54
Poland	0.85	0.83	0.70	0.70	2.62	2.24	2.68	2.68	2.23	1.87	1.89	1.89	0.00	0.00	0.02	1.13
Romania	1.44	1.45	1.28	1.28	1.70	1.85	1.25	1.25	2.45	2.68	1.60	1.60	0.00	0.00	-1.08	-40.30
Hungary	0.80	0.85	0.81	0.81	2.05	2.33	2.00	2.00	1.64	1.97	1.62	1.62	0.00	0.00	-0.36	-18.00
United Kingdom	0.64	0.71	0.76	0.76	3.47	3.91	3.44	3.44	2.23	2.76	2.60	2.60	0.00	0.00	-0.16	-5.73
<b>Former Soviet Union - 12</b>	18.43	20.97	20.26	20.29	1.23	1.46	1.33	1.33	22.65	30.71	27.05	27.05	-0.01	-0.02	-3.67	-11.94
Russia	7.20	9.22	8.30	8.30	1.01	1.35	1.24	1.24	7.24	12.43	10.30	10.30	0.00	0.00	-2.13	-17.11
Ukraine	7.30	7.76	7.98	7.98	1.58	1.84	1.58	1.58	11.55	14.26	12.60	12.60	0.00	0.00	-1.66	-11.67
Uzbekistan	1.33	1.31	1.29	1.29	1.20	1.26	1.31	1.31	1.60	1.65	1.69	1.69	0.00	0.00	0.04	2.12
<b>Canada</b>	8.41	9.15	10.31	10.31	2.06	2.07	1.78	1.78	17.30	18.93	18.31	18.31	0.00	0.00	-0.61	-3.23
<b>Africa</b>	12.53	12.98	13.32	13.31	0.94	0.86	0.89	0.90	11.73	11.19	11.89	11.93	0.04	0.30	0.74	6.62
Nigeria	2.10	2.01	1.99	1.99	1.05	1.06	1.08	1.08	2.21	2.14	2.14	2.14	0.00	0.00	0.00	0.00
<b>Southeast Asia</b>	4.03	4.05	4.07	4.07	1.27	1.32	1.33	1.33	5.10	5.35	5.40	5.40	0.00	0.00	0.05	0.94
Indonesia	1.23	1.16	1.14	1.14	1.56	1.55	1.56	1.56	1.91	1.80	1.78	1.78	0.00	0.00	-0.02	-1.11
<b>Australia</b>	2.70	3.14	2.79	2.76	1.40	1.67	1.48	1.54	3.78	5.25	4.15	4.25	0.10	2.41	-1.01	-19.14
<b>Others</b>	2.59	2.91	2.83	2.78	1.89	1.92	1.86	1.90	4.91	5.59	5.28	5.28	0.00	0.00	-0.32	-5.63

World Total and Total Foreign: (Major Oilseeds plus copra and palm kernel)

Major Oilseeds: (soybeans, sunflowerseeds, peanuts(inshell), cottonseed and rapeseed)



**Table 11 Soybean Area, Yield, and Production**

Country / Region	Area (Million hectares)				Yield (Metric tons per hectare)				Production (Million metric tons)				Change in Production			
	Prel.		2012/13 Proj.		Prel.		2012/13 Proj.		Prel.		2012/13 Proj.		From last month		From last year	
	2010/11	2011/12	Dec	Jan	2010/11	2011/12	Dec	Jan	2010/11	2011/12	Dec	Jan	MMT	Percent	MMT	Percent
<b>World</b>	103.00	102.90	108.97	108.84	2.56	2.32	2.46	2.48	263.59	238.73	267.72	269.41	1.70	0.63	30.69	12.86
<b>United States</b>	31.00	29.86	30.63	30.80	2.92	2.82	2.64	2.66	90.61	84.19	80.86	82.06	1.20	1.48	-2.14	-2.54
<b>Total Foreign</b>	72.00	73.04	78.34	78.04	2.40	2.12	2.39	2.40	172.98	154.53	186.86	187.36	0.50	0.27	32.83	21.24
<b>South America</b>																
Brazil	24.20	25.00	27.50	27.50	3.11	2.66	2.95	3.00	75.30	66.50	81.00	82.50	1.50	1.85	16.00	24.06
Argentina	18.30	17.58	19.80	19.50	2.68	2.28	2.78	2.77	49.00	40.10	55.00	54.00	-1.00	-1.82	13.90	34.66
Paraguay	2.87	2.96	3.10	3.10	2.48	1.47	2.50	2.50	7.13	4.36	7.75	7.75	0.00	0.00	3.39	77.87
Bolivia	1.03	1.09	1.09	1.09	2.24	2.13	2.20	2.20	2.30	2.32	2.40	2.40	0.00	0.00	0.08	3.45
Uruguay	0.87	0.90	0.95	0.95	1.79	1.78	2.00	2.00	1.55	1.60	1.90	1.90	0.00	0.00	0.30	18.75
<b>East Asia</b>																
China	8.52	7.89	7.20	7.20	1.77	1.84	1.75	1.75	15.10	14.48	12.60	12.60	0.00	0.00	-1.88	-12.98
Korea, South	0.07	0.08	0.08	0.08	1.48	1.65	1.68	1.68	0.11	0.13	0.13	0.13	0.00	0.00	0.00	0.00
Korea, North	0.13	0.13	0.12	0.12	1.24	1.35	1.25	1.25	0.16	0.18	0.15	0.15	0.00	0.00	-0.03	-14.29
Japan	0.14	0.14	0.14	0.14	1.62	1.63	1.63	1.63	0.22	0.22	0.22	0.22	0.00	0.00	0.00	0.00
<b>India</b>	9.30	10.27	10.80	10.80	1.05	1.07	1.06	1.06	9.80	11.00	11.50	11.50	0.00	0.00	0.50	4.55
<b>Canada</b>	1.51	1.55	1.68	1.68	2.95	2.77	2.93	2.93	4.45	4.30	4.93	4.93	0.00	0.00	0.63	14.70
<b>Former Soviet Union - 12</b>																
Ukraine	1.04	1.11	1.40	1.40	1.62	2.04	1.71	1.71	1.68	2.26	2.40	2.40	0.00	0.00	0.14	6.01
Russia	1.04	1.18	1.30	1.30	1.18	1.48	1.38	1.38	1.22	1.75	1.80	1.80	0.00	0.00	0.05	2.92
<b>Southeast Asia</b>																
Indonesia	0.47	0.45	0.45	0.45	1.38	1.38	1.38	1.38	0.65	0.62	0.62	0.62	0.00	0.00	0.00	0.00
Vietnam	0.17	0.20	0.23	0.23	1.46	1.50	1.52	1.52	0.25	0.30	0.35	0.35	0.00	0.00	0.05	16.67
Thailand	0.12	0.12	0.12	0.12	1.50	1.50	1.50	1.50	0.18	0.18	0.18	0.18	0.00	0.00	0.00	0.00
Burma	0.17	0.17	0.17	0.17	1.21	1.21	1.21	1.21	0.20	0.20	0.20	0.20	0.00	0.00	0.00	0.00
<b>EU-27</b>	0.38	0.45	0.40	0.40	2.87	2.86	2.38	2.38	1.09	1.29	0.95	0.95	0.00	0.00	-0.34	-26.24
Italy	0.17	0.24	0.19	0.19	3.53	3.33	2.66	2.66	0.60	0.80	0.50	0.50	0.00	0.00	-0.30	-37.88
France	0.05	0.04	0.04	0.04	2.71	2.95	2.95	2.95	0.14	0.12	0.11	0.11	0.00	0.00	-0.02	-12.10
<b>Sub-Saharan Africa</b>																
South Africa	0.42	0.47	0.50	0.50	1.70	1.50	1.70	1.70	0.71	0.71	0.85	0.85	0.00	0.00	0.14	19.72
Nigeria	0.44	0.44	0.44	0.44	1.02	1.02	1.02	1.02	0.45	0.45	0.45	0.45	0.00	0.00	0.00	0.00
Uganda	0.15	0.15	0.15	0.15	1.10	1.10	1.10	1.10	0.17	0.17	0.17	0.17	0.00	0.00	0.00	0.00
<b>Serbia</b>	0.15	0.17	0.17	0.17	2.41	2.52	1.70	1.70	0.35	0.42	0.28	0.28	0.00	0.00	-0.14	-32.53
<b>Mexico</b>	0.15	0.16	0.16	0.16	1.09	1.31	1.25	1.25	0.17	0.21	0.20	0.20	0.00	0.00	-0.01	-2.44
<b>Iran</b>	0.08	0.08	0.08	0.08	2.14	2.44	2.44	2.44	0.16	0.20	0.20	0.20	0.00	0.00	0.00	0.00
<b>Others</b>	0.31	0.32	0.33	0.33	1.94	1.91	1.95	1.95	0.60	0.61	0.64	0.64	0.00	0.00	0.03	4.41

World and Selected Countries and Regions

**Table 12 Cottonseed Area, Yield, and Production**

Country / Region	Area (Million hectares)				Yield (Metric tons per hectare)				Production (Million metric tons)				Change in Production			
	Prel.		2012/13 Proj.		Prel.		2012/13 Proj.		Prel.		2012/13 Proj.		From last month		From last year	
	2010/11	2011/12	Dec	Jan	2010/11	2011/12	Dec	Jan	2010/11	2011/12	Dec	Jan	MMT	Percent	MMT	Percent
<b>World</b>	32.63	34.48	33.31	33.07	1.34	1.35	1.32	1.35	43.56	46.63	43.93	44.77	0.84	1.91	-1.86	-3.98
<b>United States</b>	4.33	3.83	4.23	3.82	1.28	1.27	1.25	1.37	5.53	4.87	5.30	5.22	-0.08	-1.43	0.35	7.22
<b>Total Foreign</b>	28.30	30.65	29.09	29.26	1.34	1.36	1.33	1.35	38.03	41.76	38.63	39.55	0.92	2.37	-2.21	-5.29
<b>China</b>	5.25	5.40	5.00	5.20	2.28	2.40	2.47	2.53	11.95	12.97	12.35	13.13	0.79	6.36	0.16	1.22
<b>South Asia</b>																
India	11.14	12.20	11.70	11.70	0.97	0.93	0.92	0.92	10.80	11.30	10.80	10.80	0.00	0.00	-0.50	-4.42
Pakistan	2.80	3.00	3.00	3.00	1.34	1.54	1.47	1.47	3.76	4.62	4.40	4.40	0.00	0.00	-0.22	-4.68
<b>Former Soviet Union - 12</b>																
Uzbekistan	1.33	1.31	1.29	1.29	1.20	1.26	1.31	1.31	1.60	1.65	1.69	1.69	0.00	0.00	0.04	2.12
Turkmenistan	0.64	0.58	0.58	0.60	1.07	0.96	0.96	0.92	0.69	0.55	0.55	0.55	0.00	0.00	0.00	0.00
Tajikistan	0.16	0.20	0.20	0.20	0.99	1.08	1.08	1.08	0.16	0.22	0.22	0.22	0.00	0.00	-0.01	-2.26
Kazakhstan	0.14	0.16	0.15	0.15	1.20	1.06	1.05	1.05	0.16	0.17	0.16	0.16	0.00	0.00	-0.01	-8.19
<b>South America</b>																
Brazil	1.40	1.40	0.95	1.00	2.39	2.31	2.39	2.27	3.35	3.24	2.27	2.27	0.00	0.00	-0.97	-29.89
Argentina	0.61	0.53	0.36	0.36	0.83	0.67	0.72	0.72	0.50	0.36	0.26	0.26	0.00	0.00	-0.10	-26.76
<b>Middle East</b>																
Turkey	0.32	0.49	0.40	0.40	2.16	2.14	2.25	2.25	0.69	1.05	0.90	0.90	0.00	0.00	-0.15	-14.29
Syria	0.13	0.15	0.13	0.13	2.75	2.73	2.72	2.72	0.34	0.41	0.34	0.34	0.00	0.00	-0.07	-17.07
Iran	0.12	0.12	0.12	0.11	1.00	1.17	1.00	1.14	0.12	0.14	0.12	0.12	0.00	0.00	-0.02	-11.11
<b>Australia</b>	0.54	0.58	0.48	0.45	2.39	2.93	2.53	2.92	1.30	1.70	1.20	1.30	0.10	8.33	-0.40	-23.53
<b>EU-27</b>	0.30	0.35	0.36	0.33	1.34	1.56	1.31	1.41	0.40	0.55	0.46	0.46	0.00	0.00	-0.09	-15.79
Greece	0.23	0.29	0.29	0.26	1.39	1.58	1.31	1.43	0.32	0.45	0.37	0.37	0.00	0.00	-0.08	-17.33
Spain	0.06	0.07	0.07	0.07	1.19	1.49	1.34	1.34	0.08	0.10	0.09	0.09	0.00	0.00	-0.01	-9.00
<b>Sub-Saharan Africa</b>																
Burkina	0.40	0.40	0.53	0.53	0.45	0.48	0.55	0.55	0.18	0.19	0.29	0.29	0.00	0.00	0.10	50.26
Mali	0.26	0.48	0.50	0.50	0.52	0.50	0.51	0.57	0.13	0.24	0.26	0.28	0.03	10.98	0.04	17.43
Cameroon	0.14	0.18	0.21	0.21	0.98	0.93	1.01	1.01	0.14	0.16	0.21	0.21	0.00	0.00	0.05	30.86
Sudan	0.04	0.10	0.06	0.06	1.21	1.03	0.94	1.07	0.05	0.10	0.06	0.06	0.00	6.67	-0.04	-37.86
Zimbabwe	0.40	0.47	0.43	0.43	0.48	0.49	0.42	0.42	0.19	0.23	0.18	0.18	0.00	0.00	-0.05	-21.05
Nigeria	0.41	0.33	0.30	0.30	0.50	0.43	0.47	0.47	0.21	0.14	0.14	0.14	0.00	0.00	0.00	0.00
Benin	0.18	0.20	0.25	0.25	0.55	0.58	0.73	0.73	0.10	0.12	0.18	0.18	0.00	0.00	0.07	56.90
Uganda	0.10	0.10	0.13	0.13	1.09	1.49	1.05	1.05	0.11	0.15	0.13	0.13	0.00	0.00	-0.02	-12.08
<b>Egypt</b>	0.16	0.22	0.15	0.15	1.13	1.09	1.08	1.08	0.18	0.24	0.16	0.16	0.00	0.00	-0.08	-34.58
<b>Mexico</b>	0.11	0.19	0.19	0.15	2.24	2.12	2.14	2.66	0.25	0.41	0.41	0.41	0.00	0.00	0.00	0.00
<b>Burma</b>	0.30	0.30	0.30	0.30	0.63	0.63	0.63	0.63	0.19	0.19	0.19	0.19	0.00	0.00	0.00	0.00
<b>Others</b>	0.93	1.22	1.36	1.37	0.52	0.55	0.53	0.53	0.48	0.67	0.72	0.72	0.00	-0.28	0.05	7.62

World and Selected Countries and Regions

**Table 13 Peanut Area, Yield, and Production**

Country / Region	Area (Million hectares)				Yield (Metric tons per hectare)				Production (Million metric tons)				Change in Production			
	Prel.		2012/13 Proj.		Prel.		2012/13 Proj.		Prel.		2012/13 Proj.		From last month		From last year	
	2010/11	2011/12	Dec	Jan	2010/11	2011/12	Dec	Jan	2010/11	2011/12	Dec	Jan	MMT	Percent	MMT	Percent
<b>World</b>	21.45	20.85	20.83	20.84	1.68	1.69	1.76	1.76	36.00	35.29	36.57	36.70	0.12	0.34	1.41	3.98
<b>United States</b>	0.51	0.44	0.65	0.65	3.71	3.80	4.55	4.70	1.89	1.66	2.93	3.06	0.12	4.23	1.40	84.22
<b>Total Foreign</b>	20.94	20.41	20.19	20.19	1.63	1.65	1.67	1.67	34.11	33.63	33.64	33.64	0.00	0.00	0.01	0.02
<b>China</b>	4.53	4.65	4.70	4.70	3.46	3.44	3.40	3.40	15.64	16.00	16.00	16.00	0.00	0.00	0.00	0.00
<b>South Asia</b>																
India	6.00	5.30	5.00	5.00	0.98	1.04	1.00	1.00	5.85	5.50	5.00	5.00	0.00	0.00	-0.50	-9.09
Pakistan	0.11	0.11	0.11	0.11	0.90	0.90	0.90	0.90	0.10	0.10	0.10	0.10	0.00	0.00	0.00	0.00
<b>Sub-Saharan Africa</b>	7.80	7.79	7.80	7.80	0.97	0.89	0.93	0.93	7.57	6.96	7.29	7.29	0.00	0.00	0.33	4.78
Nigeria	1.25	1.25	1.25	1.25	1.24	1.24	1.24	1.24	1.55	1.55	1.55	1.55	0.00	0.00	0.00	0.00
Senegal	1.00	1.00	1.00	1.00	1.29	0.70	1.00	1.00	1.29	0.70	1.00	1.00	0.00	0.00	0.30	42.86
Chad	0.35	0.35	0.35	0.35	1.32	1.32	1.32	1.32	0.47	0.47	0.47	0.47	0.00	0.00	0.00	0.00
Ghana	0.47	0.47	0.47	0.47	0.94	0.94	0.94	0.94	0.44	0.44	0.44	0.44	0.00	0.00	0.00	0.00
Sudan	1.00	1.00	1.00	1.00	0.85	0.85	0.85	0.85	0.85	0.85	0.85	0.85	0.00	0.00	0.00	0.00
Congo (Kinshasa)	0.48	0.48	0.48	0.48	0.78	0.78	0.78	0.78	0.37	0.37	0.37	0.37	0.00	0.00	0.00	0.00
Burkina	0.35	0.35	0.35	0.35	1.01	1.01	1.01	1.01	0.35	0.35	0.35	0.35	0.00	0.00	0.00	0.00
Guinea	0.21	0.21	0.21	0.21	1.24	1.24	1.24	1.24	0.26	0.26	0.26	0.26	0.00	0.00	0.00	0.00
Cameroon	0.31	0.31	0.31	0.31	0.77	0.77	0.77	0.77	0.24	0.24	0.24	0.24	0.00	0.00	0.00	0.00
Mali	0.25	0.25	0.25	0.25	1.10	1.10	1.10	1.10	0.28	0.28	0.28	0.28	0.00	0.00	0.00	0.00
Malawi	0.22	0.22	0.22	0.22	1.20	1.20	1.20	1.20	0.27	0.27	0.27	0.27	0.00	0.00	0.00	0.00
Cote d'Ivoire	0.15	0.15	0.15	0.15	1.00	1.00	1.00	1.00	0.15	0.15	0.15	0.15	0.00	0.00	0.00	0.00
Uganda	0.21	0.21	0.21	0.21	0.70	0.70	0.70	0.70	0.15	0.15	0.15	0.15	0.00	0.00	0.00	0.00
Central African Republic	0.13	0.13	0.13	0.13	1.12	1.12	1.12	1.12	0.14	0.14	0.14	0.14	0.00	0.00	0.00	0.00
Benin	0.16	0.16	0.16	0.16	0.81	0.81	0.81	0.81	0.13	0.13	0.13	0.13	0.00	0.00	0.00	0.00
Mozambique	0.29	0.29	0.29	0.29	0.38	0.38	0.38	0.38	0.11	0.11	0.11	0.11	0.00	0.00	0.00	0.00
Niger	0.26	0.26	0.26	0.26	0.42	0.42	0.42	0.42	0.11	0.11	0.11	0.11	0.00	0.00	0.00	0.00
South Africa	0.06	0.05	0.06	0.06	2.09	1.93	2.18	2.18	0.12	0.09	0.12	0.12	0.00	0.00	0.03	37.93
<b>Southeast Asia</b>																
Indonesia	0.75	0.70	0.68	0.68	1.67	1.66	1.68	1.68	1.25	1.17	1.15	1.15	0.00	0.00	-0.02	-1.72
Burma	0.83	0.85	0.85	0.85	1.38	1.53	1.53	1.53	1.14	1.30	1.30	1.30	0.00	0.00	0.00	0.00
Vietnam	0.21	0.24	0.25	0.25	2.10	2.21	2.20	2.20	0.44	0.53	0.55	0.55	0.00	0.00	0.02	3.77
Thailand	0.07	0.07	0.07	0.07	1.77	1.77	1.77	1.77	0.12	0.12	0.12	0.12	0.00	0.00	0.00	0.00
<b>South America</b>																
Argentina	0.27	0.30	0.33	0.33	3.97	3.17	3.57	3.57	1.05	0.95	1.16	1.16	0.00	0.00	0.21	22.11
Brazil	0.09	0.10	0.10	0.10	2.67	2.95	2.60	2.60	0.23	0.30	0.26	0.26	0.00	0.00	-0.04	-11.86
<b>Egypt</b>	0.06	0.06	0.06	0.06	3.17	3.17	3.17	3.17	0.19	0.19	0.19	0.19	0.00	0.00	0.00	0.00
<b>Mexico</b>	0.05	0.06	0.06	0.06	1.53	1.31	1.42	1.42	0.08	0.08	0.09	0.09	0.00	0.00	0.01	6.25
<b>Others</b>	0.19	0.19	0.19	0.19	2.39	2.39	2.37	2.37	0.46	0.45	0.45	0.45	0.00	0.00	-0.01	-1.33

World and Selected Countries and Regions

**Table 14 Sunflowerseed Area, Yield, and Production**

Country / Region	Area (Million hectares)				Yield (Metric tons per hectare)				Production (Million metric tons)				Change in Production			
	Prel.		2012/13 Proj.		Prel.		2012/13 Proj.		Prel.		2012/13 Proj.		From last month		From last year	
	2010/11	2011/12	Dec	Jan	2010/11	2011/12	Dec	Jan	2010/11	2011/12	Dec	Jan	MMT	Percent	MMT	Percent
<b>World</b>	23.20	25.71	24.73	24.76	1.44	1.57	1.44	1.45	33.46	40.27	35.69	35.86	0.17	0.47	-4.41	-10.95
<b>United States</b>	0.76	0.59	0.74	0.75	1.64	1.57	1.52	1.70	1.24	0.93	1.12	1.26	0.15	13.36	0.34	36.65
<b>Total Foreign</b>	22.45	25.12	23.99	24.01	1.44	1.57	1.44	1.44	32.22	39.34	34.57	34.59	0.02	0.06	-4.75	-12.07
<b>Former Soviet Union - 12</b>																
Russia	5.55	7.20	6.00	6.00	0.96	1.34	1.25	1.25	5.35	9.63	7.50	7.50	0.00	0.00	-2.13	-22.09
Ukraine	5.40	5.80	6.00	6.00	1.56	1.81	1.50	1.50	8.40	10.50	9.00	9.00	0.00	0.00	-1.50	-14.29
Moldova	0.25	0.25	0.25	0.25	1.51	1.60	1.20	1.20	0.38	0.40	0.30	0.30	0.00	0.00	-0.10	-25.00
Kazakhstan	0.74	0.95	0.82	0.82	0.44	0.43	0.43	0.43	0.33	0.41	0.35	0.35	0.00	0.00	-0.06	-14.43
<b>South America</b>																
Argentina	1.74	1.82	1.70	1.70	2.11	1.83	2.00	2.00	3.67	3.34	3.40	3.40	0.00	0.00	0.06	1.80
Uruguay	0.00	0.01	0.03	0.03	1.33	1.50	1.60	1.60	0.00	0.02	0.04	0.04	0.00	0.00	0.03	166.67
Bolivia	0.14	0.16	0.17	0.17	1.07	1.38	1.47	1.47	0.15	0.22	0.25	0.25	0.00	0.00	0.03	13.64
<b>China</b>	0.98	0.95	0.98	0.98	2.34	2.26	2.30	2.30	2.30	2.15	2.25	2.25	0.00	0.00	0.10	4.65
<b>EU-27</b>	3.72	4.23	4.25	4.25	1.85	1.96	1.64	1.64	6.90	8.29	6.95	6.95	0.00	0.00	-1.34	-16.18
France	0.70	0.74	0.68	0.68	2.36	2.55	2.48	2.48	1.64	1.89	1.69	1.69	0.00	0.00	-0.19	-10.29
Hungary	0.50	0.57	0.62	0.62	1.98	2.38	2.03	2.03	0.99	1.37	1.25	1.25	0.00	0.00	-0.11	-8.33
Spain	0.70	0.86	0.75	0.75	1.21	1.26	0.86	0.86	0.85	1.08	0.65	0.65	0.00	0.00	-0.43	-40.04
Italy	0.11	0.12	0.12	0.12	2.27	2.32	1.92	1.92	0.25	0.27	0.22	0.22	0.00	0.00	-0.05	-19.34
Slovakia	0.08	0.09	0.09	0.09	1.81	2.26	2.22	2.22	0.15	0.20	0.20	0.20	0.00	0.00	0.00	-1.49
<b>South Asia</b>																
India	0.76	0.74	0.74	0.76	0.86	0.84	0.82	0.83	0.66	0.62	0.61	0.63	0.02	3.28	0.01	1.61
Pakistan	0.45	0.50	0.47	0.47	1.52	1.50	1.49	1.49	0.69	0.75	0.70	0.70	0.00	0.00	-0.05	-6.67
<b>Turkey</b>	0.49	0.49	0.53	0.53	2.06	1.89	2.00	2.00	1.00	0.93	1.05	1.05	0.00	0.00	0.13	13.51
<b>South Africa</b>	0.64	0.45	0.50	0.50	1.34	1.14	1.25	1.25	0.86	0.52	0.63	0.63	0.00	0.00	0.11	21.36
<b>Burma</b>	0.91	0.92	0.92	0.92	0.70	0.76	0.76	0.76	0.64	0.70	0.70	0.70	0.00	0.00	0.00	0.00
<b>Serbia</b>	0.17	0.18	0.18	0.18	2.35	2.37	2.00	2.00	0.40	0.42	0.35	0.35	0.00	0.00	-0.07	-15.66
<b>Canada</b>	0.05	0.01	0.04	0.04	1.33	1.43	1.72	1.72	0.07	0.02	0.07	0.07	0.00	0.00	0.05	270.00
<b>Australia</b>	0.04	0.04	0.05	0.05	1.16	1.18	1.32	1.32	0.04	0.05	0.07	0.07	0.00	0.00	0.02	48.94
<b>Others</b>	0.40	0.42	0.37	0.37	0.96	0.96	0.95	0.95	0.39	0.40	0.36	0.36	0.00	0.00	-0.04	-11.03

World and Selected Countries and Regions



**Table 15 Rapeseed Area, Yield, and Production**

Country / Region	Area (Million hectares)				Yield (Metric tons per hectare)				Production (Million metric tons)				Change in Production			
	Prel.		2012/13 Proj.		Prel.		2012/13 Proj.		Prel.		2012/13 Proj.		From last month		From last year	
	2010/11	2011/12	Dec	Jan	2010/11	2011/12	Dec	Jan	2010/11	2011/12	Dec	Jan	MMT	Percent	MMT	Percent
<b>World</b>	33.91	34.13	34.69	34.69	1.79	1.81	1.71	1.71	60.55	61.63	59.28	59.26	-0.02	-0.03	-2.37	-3.84
<b>United States</b>	0.58	0.42	0.70	0.70	1.92	1.65	1.60	1.59	1.11	0.70	1.13	1.11	-0.02	-1.42	0.41	59.08
<b>Total Foreign</b>	33.33	33.70	33.99	33.99	1.78	1.81	1.71	1.71	59.43	60.93	58.15	58.15	0.00	0.00	-2.78	-4.56
<b>EU-27</b>	6.99	6.63	6.10	6.10	2.97	2.88	3.08	3.08	20.75	19.08	18.80	18.80	0.00	0.00	-0.28	-1.45
Germany	1.49	1.33	1.31	1.31	3.87	2.91	3.70	3.70	5.75	3.87	4.84	4.84	0.00	0.00	0.97	25.12
France	1.47	1.56	1.60	1.60	3.29	3.44	3.39	3.39	4.82	5.35	5.43	5.43	0.00	0.00	0.08	1.48
United Kingdom	0.64	0.71	0.76	0.76	3.47	3.91	3.44	3.44	2.23	2.76	2.60	2.60	0.00	0.00	-0.16	-5.73
Poland	0.85	0.83	0.70	0.70	2.62	2.24	2.69	2.69	2.23	1.86	1.88	1.88	0.00	0.00	0.02	1.13
Czech Republic	0.37	0.37	0.40	0.40	2.82	2.80	2.81	2.81	1.04	1.05	1.13	1.13	0.00	0.00	0.08	7.74
Denmark	0.17	0.15	0.13	0.13	3.46	3.41	3.79	3.79	0.58	0.51	0.48	0.48	0.00	0.00	-0.03	-5.91
Hungary	0.26	0.23	0.15	0.15	2.15	2.26	1.87	1.87	0.56	0.53	0.28	0.28	0.00	0.00	-0.25	-46.87
Romania	0.58	0.38	0.09	0.09	1.81	1.96	1.65	1.65	1.05	0.75	0.14	0.14	0.00	0.00	-0.61	-81.33
Slovakia	0.16	0.15	0.11	0.11	1.96	2.29	2.05	2.05	0.32	0.33	0.22	0.22	0.00	0.00	-0.11	-34.04
Sweden	0.11	0.10	0.11	0.11	2.56	2.50	2.55	2.55	0.28	0.25	0.28	0.28	0.00	0.00	0.03	12.00
Lithuania	0.20	0.20	0.20	0.20	2.10	2.10	2.10	2.10	0.42	0.42	0.42	0.42	0.00	0.00	0.00	0.00
Latvia	0.09	0.09	0.09	0.09	2.31	2.28	2.28	2.28	0.22	0.21	0.21	0.21	0.00	0.00	0.00	0.00
Austria	0.05	0.05	0.06	0.06	3.15	3.38	2.71	2.71	0.17	0.18	0.15	0.15	0.00	0.00	-0.03	-16.76
Finland	0.16	0.09	0.10	0.10	1.29	1.29	1.30	1.30	0.21	0.12	0.13	0.13	0.00	0.00	0.01	11.11
Estonia	0.10	0.09	0.09	0.09	1.34	1.52	1.52	1.52	0.13	0.14	0.14	0.14	0.00	0.00	0.00	0.00
<b>China</b>	7.37	7.35	7.00	7.00	1.78	1.83	1.80	1.80	13.10	13.43	12.60	12.60	0.00	0.00	-0.83	-6.15
<b>South Asia</b>																
India	7.25	6.70	7.00	7.00	0.98	0.97	0.96	0.96	7.10	6.50	6.70	6.70	0.00	0.00	0.20	3.08
Pakistan	0.27	0.37	0.38	0.38	0.85	0.89	0.89	0.89	0.23	0.33	0.34	0.34	0.00	0.00	0.01	3.03
Bangladesh	0.30	0.31	0.31	0.31	0.75	0.74	0.74	0.74	0.23	0.23	0.23	0.23	0.00	0.00	0.00	0.00
<b>Canada</b>	6.86	7.59	8.59	8.59	1.86	1.92	1.55	1.55	12.79	14.61	13.31	13.31	0.00	0.00	-1.30	-8.89
<b>Australia</b>	2.08	2.45	2.21	2.21	1.14	1.38	1.25	1.25	2.36	3.39	2.76	2.76	0.00	0.00	-0.63	-18.46
<b>Former Soviet Union - 12</b>																
Ukraine	0.86	0.85	0.58	0.58	1.70	1.76	2.07	2.07	1.47	1.50	1.20	1.20	0.00	0.00	-0.30	-20.00
Russia	0.61	0.84	1.00	1.00	1.09	1.25	1.00	1.00	0.67	1.05	1.00	1.00	0.00	0.00	-0.05	-4.76
Belarus	0.31	0.30	0.42	0.42	1.22	1.28	1.67	1.67	0.37	0.38	0.70	0.70	0.00	0.00	0.32	84.70
<b>Paraguay</b>	0.06	0.08	0.08	0.08	1.60	1.32	1.45	1.45	0.10	0.10	0.12	0.12	0.00	0.00	0.02	16.00
<b>Others</b>	0.37	0.24	0.33	0.33	0.70	1.44	1.19	1.19	0.26	0.34	0.39	0.39	0.00	0.00	0.05	14.04

World and Selected Countries and Regions

**Table 16 Copra, Palm Kernel, and Palm Oil Production**

Country / Region	Production (Million metric tons)				Change in Production			
	2010/11	Prel.	2012/13 Proj.		From last month		From last year	
		2011/12	Dec	Jan	MMT	Percent	MMT	Percent
<b>Oilseed, Copra</b>								
Philippines	2.80	2.30	2.30	2.30	0.00	0.00	0.00	0.00
Indonesia	1.46	1.48	1.60	1.60	0.00	0.00	0.12	8.11
India	0.74	0.74	0.74	0.74	0.00	0.00	0.00	0.00
Vietnam	0.24	0.24	0.24	0.24	0.00	0.00	0.00	0.00
Mexico	0.23	0.23	0.23	0.23	0.00	0.00	0.00	0.00
Papua New Guinea	0.13	0.13	0.13	0.13	0.00	0.00	0.00	0.00
Thailand	0.07	0.07	0.07	0.07	0.00	0.00	0.00	0.00
Sri Lanka	0.07	0.07	0.07	0.07	0.00	0.00	0.00	0.00
Mozambique	0.05	0.05	0.05	0.05	0.00	0.00	0.00	0.00
Cote d'Ivoire	0.05	0.05	0.05	0.05	0.00	0.00	0.00	0.00
World	6.02	5.54	5.66	5.66	0.00	0.00	0.12	2.17
<b>Oilseed, Palm Kernel</b>								
Indonesia	6.20	6.90	7.45	7.45	0.00	0.00	0.55	7.97
Malaysia	4.52	4.50	4.75	4.75	0.00	0.00	0.25	5.56
Nigeria	0.67	0.67	0.67	0.67	0.00	0.00	0.00	0.00
Thailand	0.26	0.31	0.34	0.34	0.00	0.00	0.03	9.68
Papua New Guinea	0.14	0.14	0.14	0.14	0.00	0.00	0.00	0.00
Colombia	0.09	0.11	0.12	0.12	0.00	0.00	0.01	9.09
Cote d'Ivoire	0.08	0.08	0.08	0.08	0.00	0.00	0.00	0.00
Brazil	0.07	0.07	0.07	0.07	0.00	0.00	0.00	0.00
Cameroon	0.07	0.07	0.07	0.07	0.00	0.00	0.00	0.00
Ecuador	0.06	0.06	0.06	0.06	0.00	0.00	0.00	0.00
World	12.55	13.31	14.15	14.15	0.00	0.00	0.84	6.31
<b>Oil, Palm</b>								
Indonesia	23.60	25.90	28.00	28.00	0.00	0.00	2.10	8.11
Malaysia	18.21	18.20	18.50	18.50	0.00	0.00	0.30	1.65
Thailand	1.29	1.55	1.70	1.70	0.00	0.00	0.15	9.68
Colombia	0.75	0.92	0.96	0.96	0.00	0.00	0.04	4.35
Nigeria	0.85	0.85	0.85	0.85	0.00	0.00	0.00	0.00
Papua New Guinea	0.50	0.51	0.53	0.53	0.00	0.00	0.02	3.92
Ecuador	0.46	0.50	0.51	0.51	0.00	0.00	0.00	0.00
Cote d'Ivoire	0.30	0.30	0.30	0.30	0.00	0.00	0.00	0.00
Brazil	0.27	0.28	0.28	0.28	0.00	0.00	0.00	0.00
Honduras	0.25	0.25	0.25	0.25	0.00	0.00	0.00	0.00
World	47.92	50.70	53.33	53.33	0.00	0.00	2.63	5.19

World and Selected Countries and Regions

**Table 17 Cotton Area, Yield, and Production**

Country / Region	Area (Million hectares)				Yield (Kilograms per hectare)				Production (Million 480 lb. bales)				Change in Production			
	Prel.		2012/13 Proj.		Prel.		2012/13 Proj.		Prel.		2012/13 Proj.		From last month		From last year	
	2010/11	2011/12	Dec	Jan	2010/11	2011/12	Dec	Jan	2010/11	2011/12	Dec	Jan	MBales	Percent	MBales	Percent
<b>World</b>	33.45	35.52	34.21	34.03	757	761	744	760	116.33	124.13	116.90	118.83	1.93	1.65	-5.30	-4.27
<b>United States</b>	4.33	3.83	4.23	3.82	910	886	889	971	18.10	15.57	17.26	17.01	-0.25	-1.43	1.44	9.23
<b>Total Foreign</b>	29.12	31.69	29.99	30.21	734	746	724	734	98.23	108.56	99.65	101.82	2.17	2.18	-6.74	-6.21
<b>China</b>	5.25	5.40	5.00	5.20	1,265	1,335	1,372	1,403	30.50	33.10	31.50	33.50	2.00	6.35	0.40	1.21
<b>South Asia</b>	14.03	15.29	14.80	14.80	546	545	525	525	35.19	38.27	35.68	35.68	0.00	0.00	-2.59	-6.76
India	11.14	12.20	11.70	11.70	516	491	475	475	26.40	27.50	25.50	25.50	0.00	0.00	-2.00	-7.27
Pakistan	2.80	3.00	3.00	3.00	672	769	726	726	8.64	10.60	10.00	10.00	0.00	0.00	-0.60	-5.66
<b>Former Soviet Union - 12</b>	2.32	2.33	2.29	2.29	639	641	659	657	6.82	6.86	6.94	6.93	-0.02	-0.22	0.07	0.99
Uzbekistan	1.33	1.31	1.29	1.29	671	698	729	729	4.10	4.20	4.30	4.30	0.00	0.00	0.10	2.38
Turkmenistan	0.64	0.58	0.60	0.60	595	530	544	544	1.75	1.40	1.50	1.50	0.00	0.00	0.10	7.14
Tajikistan	0.16	0.20	0.20	0.20	550	619	599	599	0.41	0.58	0.55	0.55	0.00	0.00	-0.03	-5.17
Kazakhstan	0.14	0.16	0.15	0.15	664	590	581	581	0.42	0.44	0.40	0.40	0.00	0.00	-0.04	-8.26
<b>Sub-Saharan Africa</b>	3.29	4.02	4.26	4.26	296	313	330	331	4.47	5.77	6.46	6.47	0.01	0.15	0.70	12.10
Burkina	0.40	0.40	0.53	0.53	354	381	435	435	0.65	0.70	1.05	1.05	0.00	0.00	0.35	50.00
Mali	0.26	0.48	0.50	0.50	398	386	435	435	0.48	0.85	1.00	1.00	0.00	0.00	0.15	17.65
Zimbabwe	0.40	0.47	0.43	0.43	272	278	243	243	0.50	0.60	0.48	0.48	0.00	0.00	-0.13	-20.83
Benin	0.18	0.20	0.25	0.25	363	381	479	479	0.30	0.35	0.55	0.55	0.00	0.00	0.20	57.14
Cote d'Ivoire	0.20	0.25	0.33	0.33	370	392	402	402	0.34	0.45	0.60	0.60	0.00	0.00	0.15	33.33
Cameroon	0.14	0.18	0.21	0.21	428	404	441	441	0.28	0.33	0.43	0.43	0.00	0.00	0.10	30.77
Nigeria	0.41	0.33	0.30	0.30	252	218	236	236	0.48	0.33	0.33	0.33	0.00	0.00	0.00	0.00
Sudan	0.04	0.10	0.06	0.06	518	435	454	454	0.10	0.20	0.13	0.13	0.00	0.00	-0.08	-37.50
<b>South America</b>	2.15	2.14	1.55	1.55	1,102	1,051	1,108	1,109	10.89	10.31	7.89	7.87	-0.01	-0.18	-2.44	-23.66
Brazil	1.40	1.40	1.00	1.00	1,400	1,353	1,415	1,415	9.00	8.70	6.50	6.50	0.00	0.00	-2.20	-25.29
Argentina	0.61	0.53	0.36	0.36	486	411	484	484	1.35	1.00	0.80	0.80	0.00	0.00	-0.20	-20.00
Paraguay	0.03	0.08	0.06	0.07	399	340	345	358	0.06	0.13	0.10	0.12	0.02	21.05	-0.01	-8.00
<b>Middle East</b>	0.61	0.80	0.68	0.68	1,180	1,298	1,258	1,250	3.29	4.79	3.91	3.88	-0.03	-0.79	-0.91	-18.96
Iran	0.12	0.12	0.11	0.11	635	587	591	591	0.35	0.31	0.29	0.29	0.00	0.00	-0.03	-8.06
Syria	0.13	0.15	0.13	0.13	1,280	1,306	1,263	1,263	0.74	0.90	0.73	0.73	0.00	0.00	-0.18	-19.44
Turkey	0.32	0.49	0.40	0.40	1,436	1,529	1,497	1,497	2.11	3.44	2.75	2.75	0.00	0.00	-0.69	-20.06
<b>Australia</b>	0.54	0.58	0.42	0.45	1,681	2,065	2,099	2,055	4.20	5.50	4.00	4.20	0.20	5.00	-1.30	-23.64
<b>EU-27</b>	0.30	0.35	0.33	0.33	854	994	930	930	1.16	1.62	1.41	1.41	0.00	0.00	-0.21	-12.75
Greece	0.23	0.29	0.26	0.26	890	1,016	963	963	0.94	1.33	1.15	1.15	0.00	0.00	-0.18	-13.53
Spain	0.06	0.07	0.07	0.07	715	897	800	800	0.21	0.28	0.25	0.25	0.00	0.00	-0.03	-9.42
<b>Egypt</b>	0.16	0.22	0.15	0.15	763	737	773	773	0.55	0.75	0.52	0.52	0.00	0.00	-0.23	-30.87
<b>Mexico</b>	0.11	0.19	0.15	0.15	1,436	1,338	1,335	1,343	0.73	1.18	0.92	0.94	0.02	2.61	-0.24	-20.00
<b>Others</b>	0.37	0.37	0.37	0.37	248	251	250	250	0.42	0.43	0.43	0.43	0.00	0.00	0.00	-0.23

World and Selected Countries and Regions

**TABLE 18**

The table below presents a record of the differences between the January projection and the final Estimate. Using world wheat production as an example, the "root mean square error" means that chances are 2 out of 3 that the current forecast will not be above or below the final estimate by more than 0.7 percent. Chances are 9 out of 10 (90% confidence level) that the difference will not exceed 1.2 percent. The average difference between the January projection and the final estimate is 3.3 million tons, ranging from 0.0 million to 8.3 million tons. The January projection has been below the estimate 22 times and above 9 times.

**RELIABILITY OF PRODUCTION PROJECTIONS 1/**

COMMODITY AND REGION	Root mean square error	90 percent confidence interval	Difference between forecast and final estimate					
			Average	Smallest	Largest	Years		
						Below final	Above final	
	Percent		---Million metric tons---					
<b>WHEAT</b>								
World	0.7	1.2	3.3	0.0	8.3	22	9	
U.S.	0.1	0.2	0.0	0.0	0.3	12	8	
Foreign	0.8	1.4	3.3	0.1	8.3	22	9	
<b>COARSE GRAINS 2/</b>								
World	1.3	2.1	9.5	0.0	26.3	22	9	
U.S.	0.5	0.8	2.4	0.0	4.6	13	7	
Foreign	1.8	3.0	9.3	0.3	26.3	21	10	
<b>RICE (Milled)</b>								
World	1.7	2.9	4.9	0.0	13.9	25	5	
U.S.	1.8	3.0	0.1	0.0	0.3	12	6	
Foreign	1.8	3.0	4.9	0.1	13.9	26	5	
<b>SOYBEANS</b>								
World	3.6	6.2	4.9	0.0	22.4	19	12	
U.S.	1.5	2.5	0.6	0.0	2.5	13	13	
Foreign	6.2	10.5	4.9	0.2	22.6	19	12	
<b>COTTON</b>			---Million 480-lb. bales---					
World	2.5	4.3	1.8	0.0	5.4	20	10	
U.S.	0.9	1.5	0.1	0.0	0.3	11	19	
Foreign	3.1	5.3	1.8	0.0	5.7	22	8	
<b>UNITED STATES</b>			-----Million bushels-----					
<i>CORN</i>	0.5	0.8	12	0	148	4	2	
<i>SORGHUM</i>	1.1	1.9	2	0	53	1	3	
<i>BARLEY</i>	0.5	0.9	1	0	11	12	4	
<i>OATS</i>	0.2	0.4	0	0	2	4	3	

1/ Marketing years 1981/82 through 2011/12. Final is defined as the first November estimate following the marketing year for 1981/82 through 2011/12.

2/ Includes corn, sorghum, barley, oats, rye, millet, and mixed grain

January 2013

Office of Global Analysis, FAS, USDA