



United States
Department of
Agriculture

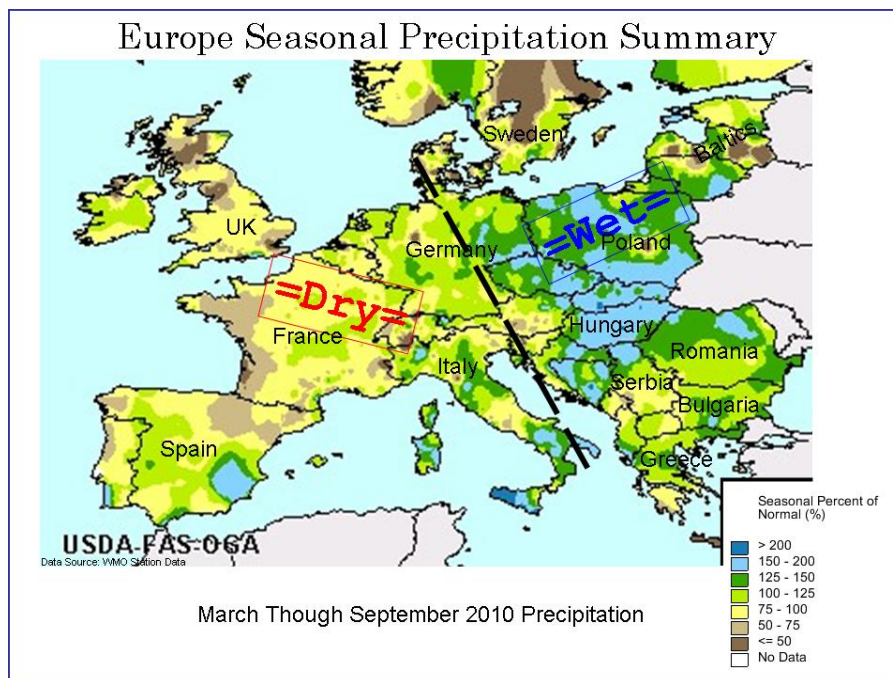
Foreign
Agricultural
Service

Circular Series
WAP 10-10
October 2010

World Agricultural Production

European Union: Adjustments Made to Wheat and Barley Estimates

Both wheat and barley production in the European Union (EU) are down from last year's level. Dryness in Western Europe and wetness in Eastern Europe were unfavorable for 2010/11 yields. While grain quality was generally high in France and the United Kingdom (UK), output was down, as both attributes were influenced by the lack of rainfall during the summer.



Eastern Germany and central Europe experienced excessive precipitation, which prolonged the wheat harvest and lowered crop prospects. Rainfall during the wheat harvests in Germany, Poland, the Czech Republic, and Hungary were especially problematic for quality.

Wheat production in the EU is estimated at 135.6 million tons, up 0.5 million from last month's estimate, up 2.3 million from the five-year average, but down 2.4 million from last year. Area is estimated at 25.7 million hectares, up 0.1 million from last month and up 0.1 million from the five-year average, but down 0.1 million from last year. Yield is estimated at 5.29 tons per hectare (t/ha) compared to 5.36 t/ha in 2009/10 and 5.60 t/ha in 2008/09. Harvest results from the UK underscore the dryness problem, hence a lowering of the UK wheat estimate by 0.7 million tons from last month to 15.0 million. Conversely, wheat estimates were raised in October for Spain (by 0.4 million tons, to 5.5 million) due primarily to an upward revision in area, and in France (also by 0.4 million tons, to 38.1 million) due to higher yield. In addition, estimated production for Romania was boosted by 0.1 million tons to 5.8 million, for Hungary by 0.2 million to 3.7 million, and for Bulgaria by 0.1 million to 3.8 million tons.

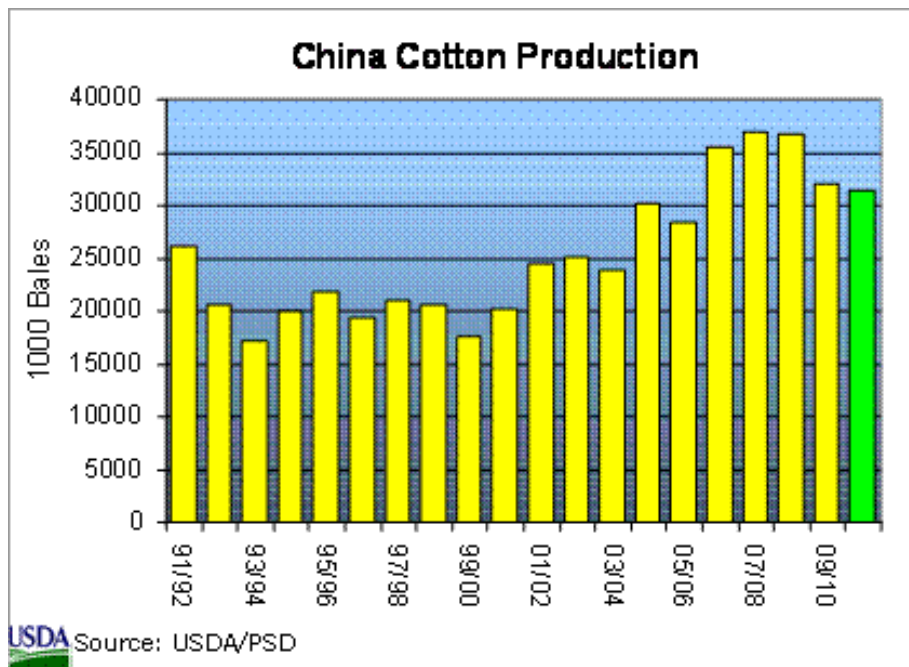
Barley production in the EU is estimated at 53.6 million tons, down 0.7 million from last month and down 8.1 million tons from last year. Area is estimated at 12.5 million hectares, down 0.1

Approved by the World Agricultural Outlook Board

million from last month and down 1.4 million from last year. Estimated yield is revised to 4.29 t/ha, compared to 4.44 t/ha last year. Specifically, barley is down 0.4 million tons and 0.1 million hectares in Spain and 0.2 million tons in Poland from last month's estimate. Sown area was significantly reduced this year because of low prices at planting time. Barley is the most recent grain to be excluded from the EU's intervention storage and much of its area was shifted into higher priced crops like wheat and rapeseed. Barley areas for France, Germany, and Spain are down from last year by 0.2 million hectares for each country, and by 0.3 million hectares for the UK. *(For more information, contact Bryan Purcell at 202-690-0138.)*

China Cotton Production Drops Slightly in 2010/11

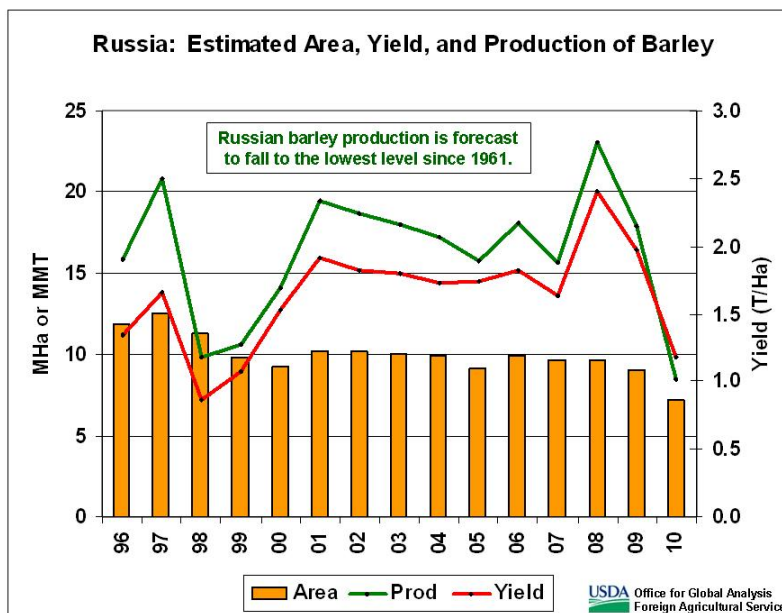
China's 2010/11 cotton production is estimated at 31.5 million bales, down 1.0 million or 3 percent from last month and down nearly 2 percent from last year due to lower estimated area and yield. Cotton area for 2010/11 is estimated at 5.25 million hectares, down 3 percent from last month and equal to last year. According to the latest statistics from Chinese government and industry sources, lower planted area in the Yellow River basin was offset by higher planted area in the Yangtze River region. Cotton area in northwest China, including the largest cotton province of Xinjiang, was expected to be similar to last year. The estimated yield of 1306 kilograms per hectare is down 2 percent from last year and below the 3-year average.



Unusually heavy rainfall in August and early September hindered cotton maturation and slowed the harvest in many parts of eastern China, where cotton development was already behind schedule due to spring planting delays. The impact of the heavy rain is expected to be reflected in both yield and overall quality of the crop. Harvesting started in mid-September and will reach its peak by the end of October. China accounts for nearly 28 percent of world cotton production and is the destination for about one-third of global cotton exports. *(For more information, contact Paulette Sandene at 202-690-0133.)*

Russia Barley: Estimated Yield Continues to Slide

The USDA estimates Russia barley production for 2010/11 at 8.5 million tons, down 0.5 million or 6 percent from last month and down 9.4 million or 53 percent from last year. Estimated area remains unchanged at 7.2 million hectares, compared to 9.1 million last year. Yield is estimated at 1.18 tons per hectare, down 38 percent from the 5-year average. The month-to-month reduction is based largely on harvest reports from the Ministry of Agriculture. Both area and estimated production for 2010/11 have fallen to the lowest levels in nearly 50 years. Sown area dropped sharply this year due to several factors, including unattractive prices compared to wheat and other alternative crops, and an overproduction of malting barley last year. Yield plunged to an 11-year low following the worst drought in living memory in the Volga and Central Districts in European Russia.



Spring barley comprises about 93 percent of the country's total barley area, and almost two-thirds of the spring barley is grown in the Central and Volga Districts. Winter barley is grown almost exclusively in the southernmost cropping areas of Russia and escaped extensive damage, due largely to the fact that the crop was already approaching maturity when the drought was still in its early stages. (For more information, contact Mark Lindeman at 202-690-0143.)

Russia Sunflowerseed: Lowest Yield in Almost Ten Years

The USDA estimates Russia sunflowerseed production for 2010/11 at 5.8 million tons, down 0.7 million or 11 percent from last month and down 0.6 million or 10 percent from last year. The estimated harvested area remains unchanged at 6.1 million hectares, compared to 5.6 million last year. Yield is estimated at 0.95 tons per hectare, down 19 percent from the 5-year average. The month-to-month reduction is based largely on harvest reports from the Ministry of Agriculture, which suggest more severe drought-related damage than previously forecast. According to data from Rosstat (the Federal Statistical Service), planted sunflower area soared to 7.1 million hectares in 2010, surpassing the previous record (set two years ago) by 16 percent. A significant portion of the planted area, however, has likely already been chopped for forage or will simply be abandoned due to severe drought that prevailed throughout the growing season in European Russia. Weekly harvest reports indicate that yields in the Volga District, which accounts for 35 percent of the sown area, have dropped by more than 30 percent from the same date last year, marking the second consecutive year of drought-related yield reduction in the Volga District. (For more information, contact Mark Lindeman at 202-690-0143.)

India's Soybean Production Prospects Improving

India's 2010/11 soybean production is forecast at 9.2 million tons, up 0.4 million or 5 percent from last month. Area is forecast at 9.5 million hectares, up 0.5 million or 6 percent from last month, but down 0.1 million or 1 percent from last year. The yield is forecast at 0.97 tons per hectare, down 1 percent from last month, but up 6 percent from last year.

The 2010 monsoon rainfall for the country as whole was 4 percent above normal with central India (the major soybean region) receiving 6 percent above normal for the period between June and September. The majority of soybean growing areas of Madhya Pradesh and Maharashtra received adequate to excess rainfall. There were a few isolated regions of drier-than-normal conditions in northern Madhya Pradesh and in southern Rajasthan, which contributed to a slightly lower planted area compared to last year.

End-of-September sowing progress reports indicate sown area at approximately 9.3 million hectares compared to 9.5 for the corresponding period last year. Increased plantings and excellent crop conditions are reported in Maharashtra and Karnataka. In general, the crop is at advanced podding to harvesting stages and market arrivals are expected to pick up in mid-October.

India's soybeans are grown exclusively during the *kharif* (southwest monsoon season) under rainfed conditions. The ideal sowing window is early to mid-June and typically commences with the arrival of the monsoon. Some farmers are able to provide supplemental irrigation, though this practice is limited by water reserves and equipment. The main producing states are Madhya Pradesh (53 percent), Maharashtra (34 percent), and Rajasthan (8 percent). (*For more information, contact Dath Mita at 202-720-7339.*)

Australia on Track for the Largest Cotton Crop in Recent Years

Australia's 2010/11 cotton production is forecast at 3.30 million 480-pound bales, up 10 percent from last month, and up 1.5 million or 86 percent from last year. Harvested area is forecast at 425,000 hectares, up 225,000 hectares or 113 percent from last year. The yield is forecast at 1,691 kilograms per hectare (kg/ha), down 3 percent from last year.

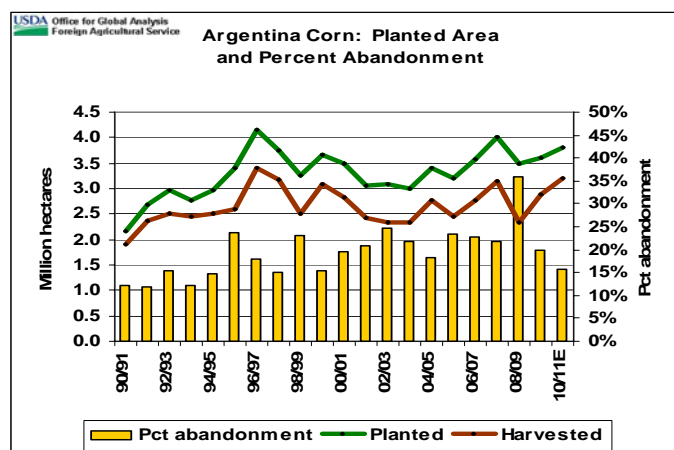
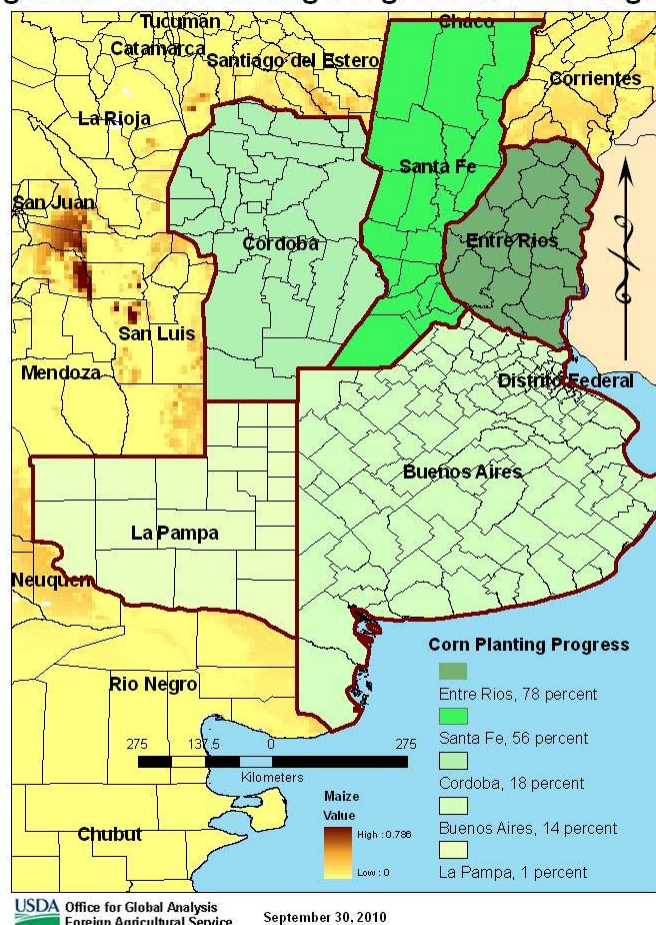
Australia is on track for one of the largest cotton crops in the past decade. Planting is in progress, with sufficient soil moisture in most regions. The majority of irrigation-water reservoirs are at approximately full capacity. Most cotton growing regions in New South Wales and Queensland have experienced above-normal winter rainfall resulting in adequate irrigation-water availability and improved farm-gate water allocations.

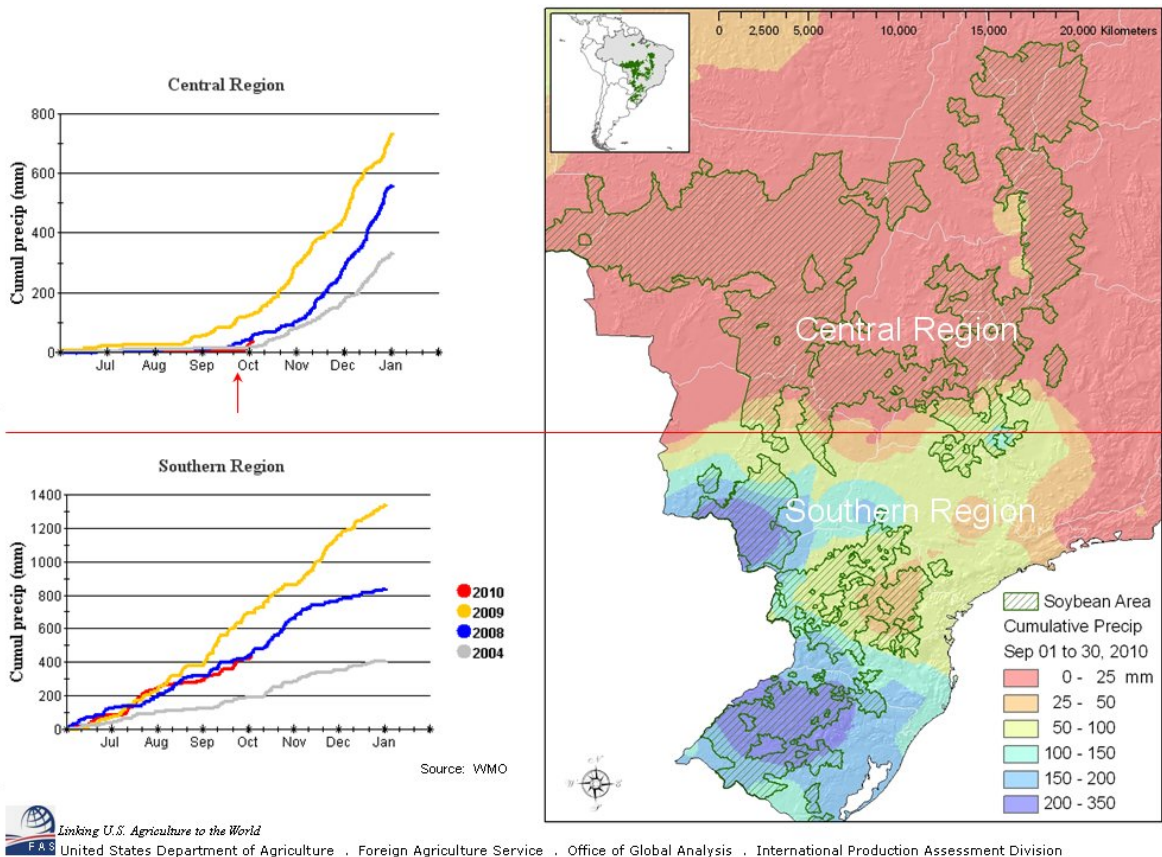
Prospects are high for increased plantings of both irrigated and dryland cotton due to improved water availability and rising cotton prices offered to farmers. Farmers' planting intentions indicate irrigated and dryland cropping areas approaching 300,000 and 100,000 hectares, respectively. The overall yield is projected to decline because dryland plantings are expanding into areas that have moderate to high variability in rainfall from January to March, which are the most important months in determining both yield and fiber quality of dryland cotton. (*For more information, contact Dath Mita at 202-720-7339.*)

Argentina: Corn Area Expansion Expected with Planting Moisture

The USDA forecasts Argentine corn production for 2010/11 at 25.0 million tons, up 4 million or 19 percent from last month and up 2.5 million or 11 percent from last year. Area is estimated at 3.2 million hectares, up 0.5 million hectares from last month and from last year. Yield is forecast at 7.81 tons per hectare, compared to the record high 8.33 tons per hectare in 2009/10 and the five-year average of 7.06 tons per hectare. Timely rains as well as warm temperatures have hastened corn planting in core regions. Timely rain the last two weeks in Cordoba and La Pampa encouraged Argentine farmers to consider seeding more corn. Entre Rios (78 percent planted) and Santa Fe (56 percent planted) have excellent soil moisture conditions and early corn has been planted in these provinces. Favorable prices along with rotational benefits for farmland are promoting corn planting. The recent September issue of *Margenes Agropecuarios*, a monthly magazine with an overview of conditions, costs and margins for crops in Argentina, list soybeans and corn as the crops providing the highest returns. Full-season corn in Argentina requires four very good months of growing conditions and continued, consistent rain to meet the current estimated production. Early planting may help this year. Farmers will have a full season with these early-planted corn fields for better crop dry-down in the fall for harvest. Harvest of the 2009/10 crop was hampered by late rain. Corn planting this season is 21 percent complete as of September 30, 2010, ahead of the pace of the last several years. Average abandonment for corn in Argentina is 25 percent for the last 5 years. (For more information, contact Denise McWilliams at 202-720-0107.)

Argentine Corn Planting Progress in Core Regions





Brazil Soybeans: Delayed Rains Begin and Planting is Underway

Brazil soybean production for 2010/11 is estimated at 67.0 million tons, up 2.0 million tons from last month's estimate. Harvested area is estimated at 24.1 million hectares, up 0.6 million hectares from both last month and last year. Yield is estimated at 2.78 tons per hectare (t/ha), compared to 2.94 t/ha last year. Brazil's Ministry of Agriculture released survey results on October 7 that indicated more soybeans will be planted than previously expected. Trade sources have also been increasing soybean area and production forecasts. The southern soybean growing region (Rio Grande Sol, Santa Catarina, Parana, Mato Grosso do Sul) has received adequate amounts of precipitation. The central region is typically dry during the summer months and has remained so for a period extending nearly 3 to 4 weeks later than the expected time for rains to begin. Farmers usually wait until there is enough soil moisture, typically after about 50 millimeters of rain have fallen, before planting the soybean crop. Rain fell across much of southern and central Brazil in early October and planting is now underway. *(For additional information, contact William Baker at 202-720-6740.)*

This report uses information from the Foreign Agricultural Service's (FAS) global network of agricultural attachés and counselors, official statistics of foreign governments and other foreign source materials, and the analysis of economic data and satellite imagery. Estimates of foreign area, yield, and production are from the International Production Assessment Division, FAS, and are reviewed by USDA's Inter-Agency Commodity Estimates Committee. Estimates of U.S. area, yield, and production are from USDA's National Agricultural Statistics Service. Numbers within the report may not add to totals because of rounding. This report reflects official USDA estimates released in the World Agricultural Supply and Demand Estimates (WASDE-487) October 8, 2010.

Printed copies are available from the National Technical Information Service. Download an order form at http://www.ntis.gov/products/specialty/usda/fas_a-g.asp, or call NTIS at 1-800-363-2068.

The FAS/OGA International Production Assessment Branch prepared this report. The next issue of World Agricultural Production will be released after 9:30 a.m. Eastern Time, November 9, 2010.

| Conversion Table | | |
|------------------------------|---|-----------------|
| Metric tons to bushels | | |
| Wheat, soybeans | = | MT * 36.7437 |
| Corn, sorghum, rye | = | MT * 39.36825 |
| Barley | = | MT * 45.929625 |
| Oats | = | MT * 68.894438 |
| Metric tons to 480-lb bales | | |
| Cotton | = | MT * 4.592917 |
| Metric tons to hundredweight | | |
| Rice | = | MT * 22.04622 |
| Area & weight | | |
| 1 hectare | = | 2.471044 acres |
| 1 kilogram | = | 2.204622 pounds |



For further information, contact:
U.S. Department of Agriculture
Foreign Agricultural Service
Office of Global Analysis
International Production Assessment Division
Ag Box 1051, Room 4630, South Building
Washington, DC 20250-1051

Telephone: (202) 720-1157

Fax: (202) 720-1158

GENERAL INFORMATION

| | | | |
|-----------------------------|----------------------|--------------|-------------------------------|
| Director | Derrick Williams III | 202-690-0131 | derrick.williams@fas.usda.gov |
| Deputy Director | Tom St. Clair | 202-720-2974 | tom.stclair@fas.usda.gov |
| Deputy Director/SIA Manager | Curt Reynolds, PhD | 202-690-0134 | curt.reynoldsc@fas.usda.gov |
| USDA Remote Sensing Advisor | Glenn Bethel | 202-720-1280 | glenn.bethel@fas.usda.gov |
| Sr. Agricultural Economist | Paul Provance | 202-720-0873 | paul.provance@fas.usda.gov |
| Program Analyst | Mary Jackson | 202-720-0886 | mary.jackson@fas.usda.gov |

COUNTRY- AND REGION-SPECIFIC INFORMATION

| | | | |
|---------------------------------|------------------------|--------------|--------------------------------|
| South America | Denise McWilliams, PhD | 202-720-0107 | denise.mcwilliams@fas.usda.gov |
| Europe and North Africa | Bryan Purcell | 202-690-0138 | bryan.purcell@fas.usda.gov |
| FSU-12, Russia | Mark Lindeman | 202-690-0143 | mark.lindeman@fas.usda.gov |
| Canada, Mexico, Central America | Arnella Trent | 202-720-0881 | arnella.trent@fas.usda.gov |
| China, East Asia | Paulette Sandene | 202-690-0133 | paulette.sandene@fas.usda.gov |
| South Asia, India | Dath Mita, PhD | 202-720-7339 | mita.dath@fas.usda.gov |
| Australia and New Zealand | | | |
| Africa | Curt Reynolds, PhD | 202-690-0134 | curt.reynoldsc@fas.usda.gov |
| Middle East and Southeast Asia | Michael Shean | 202-720-7366 | michael.shean@fas.usda.gov |
| Eastern United States | Robert Tetrault | 202-720-1071 | robert.tetrault@fas.usda.gov |
| Western United States | Jim Crutchfield | 202-690-0135 | james.crutchfield@fas.usda.gov |
| Brazil, Venezuela, Caribbean | William Baker, PhD | 202-720-6740 | william.baker@fas.usda.gov |

Table 01 World Crop Production Summary

Million Metric Tons

| Commodity | World - | Total Foreign | North America | | | EU-27 - | Former Soviet | | Asia (WAP) | | | | | South America | | Selected Other | | | All Others | |
|---------------------------|---------|---------------|---------------|----------|----------|---------|---------------|-----------|------------|---------|-----------|----------|----------|---------------|----------|----------------|--------------|----------|------------|--|
| | | | United States | Canada - | Mexico - | | Russia - | Ukraine - | China - | India - | Indonesia | Pakistan | Thailand | Argentina | Brazil - | Australia | South Africa | Turkey - | | |
| ---Million metric tons--- | | | | | | | | | | | | | | | | | | | | |
| Wheat | | | | | | | | | | | | | | | | | | | | |
| 2008/09 | 683.3 | 615.2 | 68.0 | 28.6 | 4.0 | 151.1 | 63.7 | 25.9 | 112.5 | 78.6 | nr | 21.0 | nr | 10.1 | 5.9 | 21.4 | 2.1 | 16.8 | 73.6 | |
| 2009/10 prel. | 682.2 | 621.8 | 60.4 | 26.8 | 4.3 | 138.0 | 61.7 | 20.9 | 115.0 | 80.7 | nr | 24.0 | nr | 10.5 | 5.0 | 22.5 | 2.0 | 18.5 | 91.9 | |
| 2010/11 proj. | | | | | | | | | | | | | | | | | | | | |
| Sep | 643.0 | 581.4 | 61.6 | 22.5 | 4.4 | 135.1 | 42.5 | 17.0 | 114.5 | 80.7 | nr | 22.6 | nr | 12.0 | 5.0 | 23.0 | 1.6 | 17.0 | 83.5 | |
| Oct | 641.4 | 580.9 | 60.5 | 22.2 | 3.9 | 135.6 | 42.5 | 17.0 | 114.5 | 80.7 | nr | 22.6 | nr | 12.0 | 5.2 | 23.0 | 1.6 | 17.0 | 83.1 | |
| Coarse Grains | | | | | | | | | | | | | | | | | | | | |
| 2008/09 | 1,109.7 | 783.8 | 325.9 | 27.2 | 32.3 | 161.5 | 40.7 | 26.2 | 172.7 | 39.6 | 8.7 | 3.6 | 4.6 | 19.1 | 53.6 | 12.3 | 13.1 | 10.4 | 158.3 | |
| 2009/10 prel. | 1,105.8 | 756.5 | 349.2 | 22.5 | 27.8 | 153.0 | 31.8 | 24.1 | 161.4 | 34.2 | 7.0 | 3.6 | 4.2 | 28.0 | 58.6 | 11.6 | 14.5 | 11.1 | 163.4 | |
| 2010/11 proj. | | | | | | | | | | | | | | | | | | | | |
| Sep | 1,097.7 | 748.4 | 349.3 | 22.3 | 32.5 | 139.6 | 19.7 | 21.8 | 173.0 | 40.3 | 8.4 | 3.6 | 4.0 | 27.1 | 53.7 | 11.0 | 13.0 | 10.5 | 167.8 | |
| Oct | 1,088.8 | 753.2 | 335.6 | 22.0 | 32.5 | 139.2 | 18.7 | 21.8 | 173.0 | 40.3 | 8.4 | 3.6 | 4.0 | 31.1 | 53.7 | 11.0 | 13.0 | 10.5 | 170.5 | |
| Rice, Milled | | | | | | | | | | | | | | | | | | | | |
| 2008/09 | 448.2 | 441.8 | 6.4 | nr | 0.2 | 1.6 | 0.5 | 0.1 | 134.3 | 99.2 | 38.3 | 6.9 | 19.9 | 0.9 | 8.6 | 0.0 | nr | 0.4 | 131.0 | |
| 2009/10 prel. | 441.5 | 434.6 | 6.9 | nr | 0.2 | 2.0 | 0.6 | 0.1 | 137.0 | 89.1 | 37.1 | 6.8 | 20.3 | 0.9 | 7.7 | 0.1 | nr | 0.4 | 132.3 | |
| 2010/11 proj. | | | | | | | | | | | | | | | | | | | | |
| Sep | 454.6 | 446.6 | 8.0 | nr | 0.2 | 2.0 | 0.7 | 0.1 | 136.0 | 99.0 | 38.0 | 5.3 | 20.4 | 1.0 | 8.4 | 0.2 | nr | 0.5 | 134.9 | |
| Oct | 452.5 | 445.0 | 7.6 | nr | 0.2 | 2.0 | 0.7 | 0.1 | 136.0 | 97.0 | 38.0 | 5.3 | 20.4 | 1.0 | 8.4 | 0.2 | nr | 0.5 | 135.2 | |
| Total Grains | | | | | | | | | | | | | | | | | | | | |
| 2008/09 | 2,241.1 | 1,840.8 | 400.3 | 55.8 | 36.4 | 314.2 | 104.9 | 52.2 | 419.5 | 217.4 | 47.0 | 31.5 | 24.4 | 30.1 | 68.1 | 33.7 | 15.2 | 27.6 | 362.8 | |
| 2009/10 prel. | 2,229.4 | 1,812.9 | 416.5 | 49.3 | 32.3 | 293.0 | 94.1 | 45.1 | 413.4 | 204.0 | 44.1 | 34.5 | 24.4 | 39.4 | 71.3 | 34.2 | 16.4 | 29.9 | 387.6 | |
| 2010/11 proj. | | | | | | | | | | | | | | | | | | | | |
| Sep | 2,195.3 | 1,776.4 | 418.9 | 44.8 | 37.0 | 276.8 | 62.9 | 38.9 | 423.5 | 220.0 | 46.4 | 31.5 | 24.4 | 40.1 | 67.1 | 34.2 | 14.6 | 27.9 | 386.2 | |
| Oct | 2,182.8 | 1,779.1 | 403.7 | 44.2 | 36.6 | 276.9 | 61.9 | 38.9 | 423.5 | 218.0 | 46.4 | 31.5 | 24.4 | 44.1 | 67.3 | 34.2 | 14.6 | 27.9 | 388.8 | |
| Oilseeds | | | | | | | | | | | | | | | | | | | | |
| 2008/09 | 396.3 | 307.1 | 89.2 | 16.1 | 0.7 | 27.3 | 8.8 | 10.7 | 58.1 | 33.4 | 9.1 | 4.8 | 0.7 | 35.5 | 60.3 | 2.4 | 1.5 | 1.6 | 36.0 | |
| 2009/10 prel. | 440.9 | 342.0 | 98.9 | 16.0 | 0.6 | 29.7 | 8.0 | 9.5 | 57.3 | 31.4 | 9.3 | 5.2 | 0.6 | 57.9 | 71.5 | 2.6 | 1.2 | 1.5 | 39.6 | |
| 2010/11 proj. | | | | | | | | | | | | | | | | | | | | |
| Sep | 406.1 | 303.2 | 103.0 | 15.1 | 0.6 | 28.3 | 8.2 | 8.9 | 41.6 | 28.2 | 8.5 | 4.9 | 0.5 | 53.7 | 67.7 | 3.3 | 1.3 | 1.6 | 30.7 | |
| Oct | 440.6 | 337.8 | 102.8 | 15.1 | 0.6 | 28.3 | 7.5 | 9.2 | 55.8 | 35.2 | 9.8 | 5.0 | 0.6 | 54.6 | 70.0 | 3.5 | 1.4 | 1.8 | 39.4 | |
| Cotton | | | | | | | | | | | | | | | | | | | | |
| 2008/09 | 107.1 | 94.3 | 12.8 | nr | 0.6 | 1.2 | nr | nr | 36.7 | 22.6 | 0.0 | 8.7 | 0.0 | 0.6 | 5.5 | 1.5 | 0.0 | 1.9 | 14.9 | |
| 2009/10 prel. | 101.4 | 89.2 | 12.2 | nr | 0.4 | 1.0 | nr | nr | 32.0 | 23.2 | 0.0 | 9.6 | 0.0 | 0.8 | 5.4 | 1.8 | 0.0 | 1.8 | 13.2 | |
| 2010/11 proj. | | | | | | | | | | | | | | | | | | | | |
| Sep | 117.0 | 98.1 | 18.8 | nr | 0.6 | 1.4 | nr | nr | 32.5 | 26.0 | 0.0 | 9.3 | 0.0 | 0.9 | 7.0 | 3.0 | 0.0 | 2.3 | 15.0 | |
| Oct | 116.7 | 97.8 | 18.9 | nr | 0.6 | 1.3 | nr | nr | 31.5 | 26.0 | 0.0 | 9.3 | 0.0 | 1.3 | 7.0 | 3.3 | 0.0 | 2.4 | 15.0 | |

1/ Includes wheat, coarse grains, and rice (milled) shown above.

Table 02 Wheat Area, Yield, and Production

| Country / Region | Area (Million hectares) | | | | Yield (Metric tons per hectare) | | | | Production (Million metric tons) | | | | Change in Production | | | | | | |
|---------------------------------|----------------------------|---------|--------|---------------|------------------------------------|---------|-------|------|-------------------------------------|--------|---------|--------|----------------------|---------------|--------|-----------------|--|----------------|--|
| | 2008/09 | Prel. | | 2010/11 Proj. | | 2008/09 | Prel. | | 2010/11 Proj. | | 2008/09 | Prel. | | 2010/11 Proj. | | From last month | | From last year | |
| | | 2009/10 | Sep | Oct | 2009/10 | | Sep | Oct | 2009/10 | Sep | | Oct | MMT | Percent | MMT | Percent | | | |
| World | 225.53 | 226.13 | 222.13 | 221.65 | 3.03 | 3.02 | 2.89 | 2.89 | 683.26 | 682.15 | 643.01 | 641.44 | -1.57 | -0.24 | -40.71 | -5.97 | | | |
| United States | 22.54 | 20.19 | 19.53 | 19.29 | 3.02 | 2.99 | 3.16 | 3.14 | 68.02 | 60.37 | 61.64 | 60.51 | -1.13 | -1.83 | 0.15 | 0.25 | | | |
| Total Foreign | 202.99 | 205.93 | 202.60 | 202.37 | 3.03 | 3.02 | 2.87 | 2.87 | 615.24 | 621.79 | 581.37 | 580.93 | -0.44 | -0.08 | -40.86 | -6.57 | | | |
| China | 23.62 | 24.20 | 24.30 | 24.30 | 4.76 | 4.75 | 4.71 | 4.71 | 112.46 | 115.00 | 114.50 | 114.50 | 0.00 | 0.00 | -0.50 | -0.43 | | | |
| South Asia | | | | | | | | | | | | | | | | | | | |
| India | 28.15 | 27.90 | 28.70 | 28.70 | 2.79 | 2.89 | 2.81 | 2.81 | 78.57 | 80.68 | 80.71 | 80.71 | 0.00 | 0.00 | 0.03 | 0.04 | | | |
| Pakistan | 8.55 | 9.05 | 9.00 | 9.00 | 2.45 | 2.66 | 2.51 | 2.51 | 20.96 | 24.03 | 22.60 | 22.60 | 0.00 | 0.00 | -1.43 | -5.96 | | | |
| Afghanistan | 1.60 | 2.50 | 2.30 | 2.30 | 0.94 | 1.70 | 1.61 | 1.61 | 1.50 | 4.25 | 3.70 | 3.70 | 0.00 | 0.00 | -0.55 | -12.94 | | | |
| Former Soviet Union - 12 | | | | | | | | | | | | | | | | | | | |
| Russia | 26.65 | 28.70 | 26.70 | 26.70 | 2.39 | 2.15 | 1.59 | 1.59 | 63.70 | 61.70 | 42.50 | 42.50 | 0.00 | 0.00 | -19.20 | -31.12 | | | |
| Ukraine | 7.05 | 6.75 | 6.45 | 6.45 | 3.67 | 3.10 | 2.64 | 2.64 | 25.90 | 20.90 | 17.00 | 17.00 | 0.00 | 0.00 | -3.90 | -18.66 | | | |
| Kazakhstan | 13.50 | 14.70 | 14.50 | 14.50 | 0.93 | 1.16 | 0.79 | 0.79 | 12.55 | 17.00 | 11.50 | 11.50 | 0.00 | 0.00 | -5.50 | -32.35 | | | |
| Uzbekistan | 1.36 | 1.40 | 1.40 | 1.40 | 4.41 | 4.43 | 4.64 | 4.64 | 6.00 | 6.20 | 6.50 | 6.50 | 0.00 | 0.00 | 0.30 | 4.84 | | | |
| EU-27 | 26.97 | 25.74 | 25.54 | 25.65 | 5.60 | 5.36 | 5.29 | 5.29 | 151.12 | 138.02 | 135.13 | 135.63 | 0.50 | 0.37 | -2.39 | -1.73 | | | |
| France | 5.49 | 5.15 | 5.44 | 5.44 | 7.10 | 7.45 | 6.92 | 6.99 | 39.01 | 38.33 | 37.65 | 38.05 | 0.40 | 1.06 | -0.28 | -0.74 | | | |
| Germany | 3.21 | 3.26 | 3.33 | 3.33 | 8.09 | 7.74 | 7.19 | 7.19 | 25.99 | 25.18 | 23.90 | 23.90 | 0.00 | 0.00 | -1.28 | -5.09 | | | |
| United Kingdom | 2.08 | 1.78 | 1.94 | 1.93 | 8.28 | 7.93 | 8.09 | 7.77 | 17.23 | 14.08 | 15.70 | 15.00 | -0.70 | -4.46 | 0.92 | 6.50 | | | |
| Poland | 2.28 | 2.35 | 2.20 | 2.20 | 4.07 | 4.17 | 4.00 | 4.00 | 9.28 | 9.79 | 8.80 | 8.80 | 0.00 | 0.00 | -0.99 | -10.11 | | | |
| Spain | 2.06 | 1.77 | 1.80 | 1.91 | 3.32 | 2.67 | 2.83 | 2.88 | 6.83 | 4.72 | 5.10 | 5.50 | 0.40 | 7.84 | 0.78 | 16.43 | | | |
| Italy | 2.45 | 1.83 | 1.70 | 1.70 | 3.83 | 3.35 | 3.94 | 3.94 | 9.40 | 6.14 | 6.70 | 6.70 | 0.00 | 0.00 | 0.56 | 9.07 | | | |
| Denmark | 0.64 | 0.74 | 0.74 | 0.74 | 7.85 | 8.11 | 7.30 | 7.30 | 5.02 | 6.00 | 5.40 | 5.40 | 0.00 | 0.00 | -0.60 | -9.94 | | | |
| Hungary | 1.13 | 1.15 | 0.99 | 1.01 | 5.00 | 3.86 | 3.55 | 3.66 | 5.62 | 4.42 | 3.50 | 3.70 | 0.20 | 5.71 | -0.72 | -16.29 | | | |
| Romania | 2.17 | 2.15 | 2.05 | 2.05 | 3.48 | 2.47 | 2.78 | 2.83 | 7.56 | 5.30 | 5.70 | 5.80 | 0.10 | 1.75 | 0.50 | 9.43 | | | |
| Bulgaria | 1.11 | 1.25 | 1.04 | 1.04 | 4.17 | 3.19 | 3.56 | 3.65 | 4.63 | 4.00 | 3.70 | 3.80 | 0.10 | 2.70 | -0.20 | -5.00 | | | |
| Canada | 10.03 | 9.64 | 8.14 | 8.12 | 2.85 | 2.79 | 2.76 | 2.73 | 28.61 | 26.85 | 22.50 | 22.20 | -0.30 | -1.33 | -4.65 | -17.31 | | | |
| Australia | 13.53 | 13.79 | 13.25 | 13.25 | 1.58 | 1.63 | 1.74 | 1.74 | 21.42 | 22.50 | 23.00 | 23.00 | 0.00 | 0.00 | 0.50 | 2.22 | | | |
| Middle East | | | | | | | | | | | | | | | | | | | |
| Turkey | 7.70 | 7.80 | 8.00 | 8.00 | 2.18 | 2.37 | 2.13 | 2.13 | 16.80 | 18.45 | 17.00 | 17.00 | 0.00 | 0.00 | -1.45 | -7.86 | | | |
| Iran | 5.85 | 6.00 | 6.40 | 6.40 | 1.71 | 2.00 | 2.25 | 2.25 | 10.00 | 12.00 | 14.40 | 14.40 | 0.00 | 0.00 | 2.40 | 20.00 | | | |
| Syria | 1.49 | 1.50 | 1.35 | 1.35 | 1.44 | 2.67 | 2.78 | 2.67 | 2.14 | 4.00 | 3.75 | 3.60 | -0.15 | -4.00 | -0.40 | -10.00 | | | |
| North Africa | | | | | | | | | | | | | | | | | | | |
| Egypt | 1.23 | 1.32 | 1.32 | 1.32 | 6.51 | 6.45 | 6.52 | 6.52 | 7.98 | 8.52 | 8.60 | 8.60 | 0.00 | 0.00 | 0.08 | 0.90 | | | |
| Morocco | 2.86 | 2.98 | 2.80 | 2.80 | 1.31 | 2.14 | 1.75 | 1.75 | 3.73 | 6.37 | 4.90 | 4.90 | 0.00 | 0.00 | -1.47 | -23.08 | | | |
| Argentina | 5.12 | 3.50 | 4.30 | 4.30 | 1.97 | 3.00 | 2.79 | 2.79 | 10.10 | 10.50 | 12.00 | 12.00 | 0.00 | 0.00 | 1.50 | 14.29 | | | |
| Others | 17.74 | 18.47 | 18.15 | 17.83 | 2.35 | 2.43 | 2.26 | 2.28 | 41.71 | 44.82 | 41.08 | 40.59 | -0.49 | -1.19 | -4.23 | -9.43 | | | |

World and Selected Countries and Regions

Table 03 Total Coarse Grain Area, Yield, and Production

| Country / Region | Area (Million hectares) | | | | Yield (Metric tons per hectare) | | | | Production (Million metric tons) | | | | Change in Production | | | |
|---------------------------------|----------------------------|---------|---------------|--------|------------------------------------|---------|---------------|------|-------------------------------------|----------|---------------|----------|----------------------|---------|----------------|---------|
| | 2008/09 | Prel. | 2010/11 Proj. | | 2008/09 | Prel. | 2010/11 Proj. | | 2008/09 | Prel. | 2010/11 Proj. | | From last month | | From last year | |
| | | 2009/10 | Sep | Oct | | 2009/10 | Sep | Oct | | 2009/10 | Sep | Oct | MMT | Percent | MMT | Percent |
| World | 313.61 | 305.88 | 306.61 | 307.29 | 3.54 | 3.61 | 3.58 | 3.54 | 1,109.68 | 1,105.76 | 1,097.66 | 1,088.77 | -8.89 | -0.81 | -16.99 | -1.54 |
| United States | 36.94 | 36.36 | 36.54 | 36.39 | 8.82 | 9.60 | 9.56 | 9.22 | 325.87 | 349.22 | 349.28 | 335.58 | -13.70 | -3.92 | -13.64 | -3.90 |
| Total Foreign | 276.66 | 269.52 | 270.07 | 270.90 | 2.83 | 2.81 | 2.77 | 2.78 | 783.81 | 756.54 | 748.38 | 753.19 | 4.81 | 0.64 | -3.35 | -0.44 |
| China | 32.55 | 32.97 | 33.43 | 33.43 | 5.30 | 4.89 | 5.17 | 5.17 | 172.66 | 161.35 | 173.00 | 173.00 | 0.00 | 0.00 | 11.65 | 7.22 |
| South America | | | | | | | | | | | | | | | | |
| Brazil | 15.38 | 14.14 | 14.03 | 14.03 | 3.49 | 4.15 | 3.83 | 3.83 | 53.62 | 58.61 | 53.73 | 53.73 | 0.00 | 0.00 | -4.88 | -8.32 |
| Argentina | 3.86 | 4.10 | 4.30 | 4.80 | 4.96 | 6.82 | 6.30 | 6.48 | 19.13 | 27.95 | 27.08 | 31.08 | 4.00 | 14.77 | 3.13 | 11.19 |
| EU-27 | 33.34 | 32.21 | 30.23 | 30.13 | 4.84 | 4.75 | 4.62 | 4.62 | 161.49 | 152.96 | 139.62 | 139.22 | -0.39 | -0.28 | -13.74 | -8.98 |
| France | 4.10 | 4.21 | 3.84 | 3.84 | 7.56 | 7.49 | 7.08 | 7.10 | 30.97 | 31.54 | 27.18 | 27.28 | 0.10 | 0.37 | -4.25 | -13.49 |
| Germany | 3.83 | 3.52 | 3.19 | 3.19 | 6.30 | 6.63 | 6.01 | 6.01 | 24.12 | 23.30 | 19.16 | 19.16 | 0.00 | 0.00 | -4.14 | -17.78 |
| Poland | 6.25 | 6.16 | 5.99 | 5.99 | 2.93 | 3.24 | 2.95 | 2.91 | 18.31 | 19.94 | 17.65 | 17.45 | -0.20 | -1.13 | -2.50 | -12.52 |
| Spain | 4.54 | 4.14 | 4.03 | 3.92 | 3.66 | 2.90 | 3.32 | 3.30 | 16.62 | 12.01 | 13.39 | 12.94 | -0.45 | -3.35 | 0.93 | 7.70 |
| Italy | 1.52 | 1.40 | 1.33 | 1.33 | 7.63 | 7.29 | 7.52 | 7.52 | 11.55 | 10.22 | 10.00 | 10.00 | 0.00 | 0.00 | -0.22 | -2.17 |
| Hungary | 1.77 | 1.72 | 1.67 | 1.63 | 6.30 | 5.31 | 5.81 | 5.58 | 11.15 | 9.12 | 9.72 | 9.11 | -0.61 | -6.28 | -0.02 | -0.16 |
| United Kingdom | 1.19 | 1.32 | 1.05 | 1.05 | 5.92 | 5.80 | 5.76 | 5.76 | 7.06 | 7.66 | 6.06 | 6.06 | 0.00 | 0.00 | -1.61 | -20.95 |
| Romania | 3.10 | 3.10 | 2.99 | 3.04 | 3.10 | 2.91 | 3.19 | 3.33 | 9.62 | 9.04 | 9.51 | 10.11 | 0.60 | 6.31 | 1.07 | 11.86 |
| Former Soviet Union - 12 | | | | | | | | | | | | | | | | |
| Russia | 17.65 | 15.90 | 13.95 | 13.95 | 2.31 | 2.00 | 1.41 | 1.34 | 40.70 | 31.82 | 19.70 | 18.70 | -1.00 | -5.08 | -13.12 | -41.22 |
| Ukraine | 7.59 | 8.08 | 7.92 | 7.92 | 3.45 | 2.99 | 2.75 | 2.75 | 26.22 | 24.12 | 21.75 | 21.75 | 0.00 | 0.00 | -2.37 | -9.83 |
| Kazakhstan | 2.48 | 2.38 | 1.98 | 1.98 | 0.93 | 1.31 | 0.92 | 0.92 | 2.32 | 3.12 | 1.82 | 1.82 | 0.00 | 0.00 | -1.30 | -41.73 |
| Africa | 78.64 | 80.53 | 79.99 | 80.47 | 1.33 | 1.33 | 1.36 | 1.38 | 104.39 | 107.34 | 108.49 | 110.77 | 2.28 | 2.10 | 3.43 | 3.19 |
| Nigeria | 17.95 | 18.25 | 18.35 | 18.35 | 1.49 | 1.53 | 1.53 | 1.53 | 26.67 | 27.96 | 28.10 | 28.10 | 0.00 | 0.00 | 0.14 | 0.50 |
| South Africa | 3.77 | 4.13 | 3.90 | 3.90 | 3.47 | 3.51 | 3.34 | 3.34 | 13.08 | 14.48 | 13.03 | 13.00 | -0.03 | -0.19 | -1.48 | -10.23 |
| Ethiopia | 4.88 | 4.93 | 4.93 | 4.93 | 1.85 | 1.63 | 1.81 | 1.81 | 9.03 | 8.05 | 8.93 | 8.93 | 0.00 | 0.00 | 0.88 | 10.92 |
| Egypt | 0.99 | 1.04 | 1.08 | 1.08 | 7.77 | 7.57 | 7.46 | 7.46 | 7.71 | 7.88 | 8.06 | 8.06 | 0.00 | 0.00 | 0.18 | 2.26 |
| India | 26.65 | 24.28 | 26.49 | 26.49 | 1.49 | 1.41 | 1.52 | 1.52 | 39.61 | 34.16 | 40.30 | 40.30 | 0.00 | 0.00 | 6.14 | 17.97 |
| Southeast Asia | | | | | | | | | | | | | | | | |
| Indonesia | 3.22 | 2.70 | 3.15 | 3.15 | 2.70 | 2.59 | 2.67 | 2.67 | 8.70 | 7.00 | 8.40 | 8.40 | 0.00 | 0.00 | 1.40 | 20.00 |
| Philippines | 2.66 | 2.52 | 2.65 | 2.65 | 2.58 | 2.47 | 2.57 | 2.57 | 6.85 | 6.23 | 6.80 | 6.80 | 0.00 | 0.00 | 0.57 | 9.13 |
| Thailand | 1.11 | 1.04 | 1.01 | 1.01 | 4.13 | 4.02 | 3.94 | 3.94 | 4.56 | 4.16 | 3.96 | 3.96 | 0.00 | 0.00 | -0.20 | -4.81 |
| Mexico | 9.63 | 8.20 | 9.46 | 9.46 | 3.35 | 3.39 | 3.44 | 3.44 | 32.25 | 27.80 | 32.53 | 32.53 | 0.00 | 0.00 | 4.73 | 17.02 |
| Canada | 6.33 | 5.23 | 4.77 | 4.72 | 4.29 | 4.30 | 4.69 | 4.66 | 27.18 | 22.48 | 22.35 | 21.97 | -0.38 | -1.70 | -0.51 | -2.28 |
| Australia | 6.79 | 6.08 | 5.86 | 5.86 | 1.81 | 1.90 | 1.87 | 1.87 | 12.27 | 11.57 | 10.97 | 10.97 | 0.00 | 0.00 | -0.60 | -5.19 |
| Turkey | 4.25 | 4.23 | 4.17 | 4.17 | 2.45 | 2.62 | 2.52 | 2.52 | 10.42 | 11.10 | 10.50 | 10.50 | 0.00 | 0.00 | -0.60 | -5.41 |
| Others | 24.56 | 24.94 | 26.70 | 26.70 | 2.50 | 2.60 | 2.53 | 2.54 | 61.44 | 64.79 | 67.41 | 67.71 | 0.30 | 0.45 | 2.92 | 4.51 |

World and Selected Countries and Regions

Table 04 Corn Area, Yield, and Production

| Country / Region | Area (Million hectares) | | | | Yield (Metric tons per hectare) | | | | Production (Million metric tons) | | | | Change in Production | | | | | | |
|---------------------------|----------------------------|---------|--------|---------------|------------------------------------|---------|-------|------|-------------------------------------|--------|---------|--------|----------------------|---------------|--------|-----------------|--|----------------|--|
| | 2008/09 | Prel. | | 2010/11 Proj. | | 2008/09 | Prel. | | 2010/11 Proj. | | 2008/09 | Prel. | | 2010/11 Proj. | | From last month | | From last year | |
| | | 2009/10 | Sep | Oct | 2009/10 | | Sep | Oct | 2009/10 | Sep | | Oct | MMT | Percent | MMT | Percent | | | |
| World | 158.19 | 155.50 | 158.77 | 159.66 | 5.04 | 5.21 | 5.20 | 5.13 | 797.77 | 810.29 | 826.07 | 819.65 | -6.42 | -0.78 | 9.36 | 1.15 | | | |
| United States | 31.80 | 32.21 | 32.78 | 32.89 | 9.66 | 10.34 | 10.20 | 9.78 | 307.14 | 333.01 | 334.27 | 321.68 | -12.59 | -3.77 | -11.33 | -3.40 | | | |
| Total Foreign | 126.39 | 123.30 | 125.98 | 126.77 | 3.88 | 3.87 | 3.90 | 3.93 | 490.63 | 477.28 | 491.80 | 497.97 | 6.17 | 1.25 | 20.69 | 4.33 | | | |
| China | 29.86 | 30.40 | 30.80 | 30.80 | 5.56 | 5.10 | 5.39 | 5.39 | 165.90 | 155.00 | 166.00 | 166.00 | 0.00 | 0.00 | 11.00 | 7.10 | | | |
| South America | | | | | | | | | | | | | | | | | | | |
| Brazil | 14.10 | 12.93 | 12.75 | 12.75 | 3.62 | 4.34 | 4.00 | 4.00 | 51.00 | 56.10 | 51.00 | 51.00 | 0.00 | 0.00 | -5.10 | -9.09 | | | |
| Argentina | 2.50 | 2.70 | 2.70 | 3.20 | 6.00 | 8.33 | 7.78 | 7.81 | 15.00 | 22.50 | 21.00 | 25.00 | 4.00 | 19.05 | 2.50 | 11.11 | | | |
| Mexico | 7.32 | 6.23 | 7.20 | 7.20 | 3.31 | 3.42 | 3.40 | 3.40 | 24.23 | 21.30 | 24.50 | 24.50 | 0.00 | 0.00 | 3.20 | 15.02 | | | |
| EU-27 | 8.79 | 8.32 | 8.06 | 8.05 | 7.09 | 6.80 | 6.79 | 6.83 | 62.32 | 56.53 | 54.71 | 54.96 | 0.25 | 0.46 | -1.57 | -2.78 | | | |
| France | 1.70 | 1.68 | 1.53 | 1.53 | 9.31 | 9.11 | 8.82 | 8.89 | 15.84 | 15.30 | 13.50 | 13.60 | 0.10 | 0.74 | -1.70 | -11.11 | | | |
| Italy | 0.99 | 0.92 | 0.86 | 0.86 | 9.80 | 9.40 | 9.77 | 9.77 | 9.72 | 8.60 | 8.40 | 8.40 | 0.00 | 0.00 | -0.20 | -2.33 | | | |
| Hungary | 1.20 | 1.18 | 1.17 | 1.13 | 7.39 | 6.36 | 6.92 | 6.64 | 8.87 | 7.50 | 8.10 | 7.50 | -0.60 | -7.41 | 0.00 | 0.00 | | | |
| Romania | 2.45 | 2.35 | 2.25 | 2.30 | 3.21 | 3.19 | 3.51 | 3.70 | 7.87 | 7.50 | 7.90 | 8.50 | 0.60 | 7.59 | 1.00 | 13.33 | | | |
| Poland | 0.32 | 0.27 | 0.29 | 0.29 | 5.82 | 6.23 | 5.79 | 5.79 | 1.84 | 1.71 | 1.68 | 1.68 | 0.00 | 0.00 | -0.03 | -1.58 | | | |
| India | 8.20 | 8.00 | 8.20 | 8.20 | 2.41 | 2.09 | 2.44 | 2.44 | 19.73 | 16.68 | 20.00 | 20.00 | 0.00 | 0.00 | 3.32 | 19.90 | | | |
| Canada | 1.17 | 1.14 | 1.20 | 1.20 | 9.06 | 8.37 | 9.17 | 9.17 | 10.59 | 9.56 | 11.00 | 11.00 | 0.00 | 0.00 | 1.44 | 15.05 | | | |
| Indonesia | 3.22 | 2.70 | 3.15 | 3.15 | 2.70 | 2.59 | 2.67 | 2.67 | 8.70 | 7.00 | 8.40 | 8.40 | 0.00 | 0.00 | 1.40 | 20.00 | | | |
| Ukraine | 2.40 | 2.10 | 2.60 | 2.60 | 4.75 | 5.00 | 4.42 | 4.42 | 11.40 | 10.50 | 11.50 | 11.50 | 0.00 | 0.00 | 1.00 | 9.52 | | | |
| Serbia | 1.28 | 1.20 | 1.30 | 1.30 | 4.80 | 5.33 | 5.00 | 5.23 | 6.13 | 6.40 | 6.50 | 6.80 | 0.30 | 4.62 | 0.40 | 6.25 | | | |
| Egypt | 0.78 | 0.83 | 0.87 | 0.87 | 8.51 | 8.21 | 8.05 | 8.05 | 6.65 | 6.82 | 7.00 | 7.00 | 0.00 | 0.00 | 0.18 | 2.61 | | | |
| Philippines | 2.66 | 2.52 | 2.65 | 2.65 | 2.58 | 2.47 | 2.57 | 2.57 | 6.85 | 6.23 | 6.80 | 6.80 | 0.00 | 0.00 | 0.57 | 9.13 | | | |
| Vietnam | 1.09 | 1.20 | 1.20 | 1.20 | 4.08 | 4.40 | 4.58 | 4.58 | 4.43 | 5.28 | 5.50 | 5.50 | 0.00 | 0.00 | 0.22 | 4.17 | | | |
| Thailand | 1.07 | 1.00 | 0.97 | 0.97 | 4.21 | 4.10 | 4.02 | 4.02 | 4.50 | 4.10 | 3.90 | 3.90 | 0.00 | 0.00 | -0.20 | -4.88 | | | |
| Russia | 1.65 | 1.10 | 1.15 | 1.15 | 4.00 | 3.59 | 3.04 | 2.61 | 6.60 | 3.95 | 3.50 | 3.00 | -0.50 | -14.29 | -0.95 | -24.05 | | | |
| Sub-Saharan Africa | | | | | | | | | | | | | | | | | | | |
| South Africa | 2.90 | 3.25 | 3.00 | 3.00 | 4.34 | 4.31 | 4.17 | 4.17 | 12.57 | 14.00 | 12.50 | 12.50 | 0.00 | 0.00 | -1.50 | -10.71 | | | |
| Nigeria | 4.70 | 4.90 | 4.90 | 4.90 | 1.70 | 1.79 | 1.78 | 1.78 | 7.97 | 8.76 | 8.70 | 8.70 | 0.00 | 0.00 | -0.06 | -0.67 | | | |
| Ethiopia | 1.98 | 2.00 | 2.00 | 2.00 | 2.22 | 1.95 | 2.20 | 2.20 | 4.40 | 3.90 | 4.40 | 4.40 | 0.00 | 0.00 | 0.50 | 12.82 | | | |
| Zimbabwe | 1.30 | 1.10 | 1.30 | 1.30 | 0.40 | 0.59 | 0.58 | 0.58 | 0.53 | 0.65 | 0.75 | 0.75 | 0.00 | 0.00 | 0.10 | 15.38 | | | |
| Turkey | 0.52 | 0.50 | 0.49 | 0.49 | 7.98 | 8.00 | 8.16 | 8.16 | 4.15 | 4.00 | 4.00 | 4.00 | 0.00 | 0.00 | 0.00 | 0.00 | | | |
| Others | 28.92 | 29.18 | 29.50 | 29.79 | 1.97 | 1.99 | 2.04 | 2.09 | 56.99 | 58.02 | 60.14 | 62.26 | 2.12 | 3.52 | 4.25 | 7.32 | | | |

World and Selected Countries and Regions

Table 05 Barley Area, Yield, and Production

| Country / Region | Area (Million hectares) | | | | Yield (Metric tons per hectare) | | | | Production (Million metric tons) | | | | Change in Production | | | |
|----------------------|----------------------------|---------|---------------|-------|------------------------------------|---------|---------------|------|-------------------------------------|---------|---------------|--------|----------------------|---------|----------------|---------|
| | Prel. | | 2010/11 Proj. | | Prel. | | 2010/11 Proj. | | Prel. | | 2010/11 Proj. | | From last month | | From last year | |
| | 2008/09 | 2009/10 | Sep | Oct | 2008/09 | 2009/10 | Sep | Oct | 2008/09 | 2009/10 | Sep | Oct | MMT | Percent | MMT | Percent |
| World | 55.90 | 55.41 | 51.31 | 51.14 | 2.78 | 2.70 | 2.45 | 2.44 | 155.34 | 149.73 | 125.95 | 124.56 | -1.38 | -1.10 | -25.17 | -16.81 |
| United States | 1.53 | 1.26 | 1.03 | 1.00 | 3.42 | 3.93 | 3.89 | 3.96 | 5.23 | 4.95 | 4.01 | 3.96 | -0.05 | -1.17 | -0.99 | -19.98 |
| Total Foreign | 54.37 | 54.15 | 50.28 | 50.14 | 2.76 | 2.67 | 2.43 | 2.41 | 150.11 | 144.78 | 121.94 | 120.60 | -1.34 | -1.09 | -24.18 | -16.70 |
| Russia | 9.60 | 9.05 | 7.20 | 7.20 | 2.41 | 1.98 | 1.25 | 1.18 | 23.10 | 17.90 | 9.00 | 8.50 | -0.50 | -5.56 | -9.40 | -52.51 |
| EU-27 | 14.51 | 13.88 | 12.57 | 12.48 | 4.52 | 4.44 | 4.31 | 4.29 | 65.51 | 61.66 | 54.22 | 53.56 | -0.66 | -1.22 | -8.10 | -13.13 |
| Germany | 1.96 | 1.80 | 1.62 | 1.62 | 6.10 | 6.56 | 6.32 | 6.32 | 11.97 | 11.80 | 10.20 | 10.20 | 0.00 | 0.00 | -1.60 | -13.56 |
| France | 1.80 | 1.88 | 1.66 | 1.66 | 6.77 | 6.84 | 6.23 | 6.23 | 12.17 | 12.88 | 10.35 | 10.35 | 0.00 | 0.00 | -2.53 | -19.64 |
| Spain | 3.49 | 3.05 | 2.95 | 2.86 | 3.23 | 2.40 | 2.95 | 2.90 | 11.27 | 7.30 | 8.70 | 8.30 | -0.40 | -4.60 | 1.01 | 13.78 |
| United Kingdom | 1.03 | 1.16 | 0.90 | 0.90 | 5.95 | 5.84 | 5.78 | 5.78 | 6.14 | 6.77 | 5.20 | 5.20 | 0.00 | 0.00 | -1.57 | -23.18 |
| Denmark | 0.72 | 0.59 | 0.60 | 0.60 | 4.69 | 5.77 | 5.04 | 5.04 | 3.36 | 3.42 | 3.00 | 3.00 | 0.00 | 0.00 | -0.42 | -12.31 |
| Poland | 1.21 | 1.16 | 1.10 | 1.10 | 3.00 | 3.44 | 3.18 | 3.00 | 3.62 | 3.98 | 3.50 | 3.30 | -0.20 | -5.71 | -0.68 | -17.17 |
| Czech Republic | 0.48 | 0.45 | 0.39 | 0.39 | 4.66 | 4.41 | 4.36 | 4.23 | 2.24 | 2.00 | 1.70 | 1.65 | -0.05 | -2.94 | -0.35 | -17.62 |
| Finland | 0.59 | 0.56 | 0.41 | 0.41 | 3.63 | 3.86 | 3.05 | 3.05 | 2.13 | 2.17 | 1.25 | 1.25 | 0.00 | 0.00 | -0.92 | -42.42 |
| Sweden | 0.40 | 0.36 | 0.32 | 0.32 | 4.19 | 4.65 | 4.69 | 4.69 | 1.67 | 1.68 | 1.50 | 1.50 | 0.00 | 0.00 | -0.18 | -10.55 |
| Italy | 0.33 | 0.31 | 0.29 | 0.29 | 3.74 | 3.42 | 3.52 | 3.52 | 1.24 | 1.05 | 1.02 | 1.02 | 0.00 | 0.00 | -0.03 | -2.76 |
| Hungary | 0.33 | 0.32 | 0.29 | 0.29 | 4.45 | 3.31 | 3.37 | 3.33 | 1.48 | 1.06 | 0.98 | 0.97 | -0.01 | -1.02 | -0.10 | -9.21 |
| Austria | 0.19 | 0.18 | 0.17 | 0.17 | 5.20 | 4.60 | 4.52 | 4.52 | 0.97 | 0.83 | 0.76 | 0.76 | 0.00 | 0.00 | -0.07 | -8.76 |
| Ukraine | 4.15 | 5.00 | 4.50 | 4.50 | 3.04 | 2.36 | 2.00 | 2.00 | 12.60 | 11.80 | 9.00 | 9.00 | 0.00 | 0.00 | -2.80 | -23.73 |
| Canada | 3.50 | 2.92 | 2.55 | 2.50 | 3.36 | 3.26 | 3.33 | 3.30 | 11.78 | 9.52 | 8.50 | 8.25 | -0.25 | -2.94 | -1.27 | -13.31 |
| Australia | 5.02 | 4.48 | 4.20 | 4.20 | 1.59 | 1.85 | 1.81 | 1.81 | 8.00 | 8.30 | 7.60 | 7.60 | 0.00 | 0.00 | -0.70 | -8.43 |
| Turkey | 3.40 | 3.40 | 3.35 | 3.35 | 1.68 | 1.91 | 1.76 | 1.76 | 5.70 | 6.50 | 5.90 | 5.90 | 0.00 | 0.00 | -0.60 | -9.23 |
| China | 0.79 | 0.72 | 0.80 | 0.80 | 3.56 | 3.50 | 3.88 | 3.88 | 2.82 | 2.50 | 3.10 | 3.10 | 0.00 | 0.00 | 0.60 | 24.00 |
| Iran | 1.30 | 1.40 | 1.60 | 1.60 | 1.54 | 1.86 | 1.94 | 1.94 | 2.00 | 2.60 | 3.10 | 3.10 | 0.00 | 0.00 | 0.50 | 19.23 |
| Morocco | 2.18 | 2.18 | 1.91 | 1.91 | 0.58 | 1.74 | 1.36 | 1.36 | 1.27 | 3.80 | 2.60 | 2.60 | 0.00 | 0.00 | -1.20 | -31.58 |
| Kazakhstan | 2.10 | 2.00 | 1.60 | 1.60 | 0.86 | 1.30 | 0.81 | 0.81 | 1.80 | 2.60 | 1.30 | 1.30 | 0.00 | 0.00 | -1.30 | -50.00 |
| Ethiopia | 0.95 | 0.98 | 0.98 | 0.98 | 1.56 | 1.61 | 1.44 | 1.44 | 1.48 | 1.57 | 1.40 | 1.40 | 0.00 | 0.00 | -0.17 | -10.77 |
| Belarus | 0.61 | 0.50 | 0.60 | 0.60 | 3.61 | 3.30 | 2.67 | 2.67 | 2.20 | 1.65 | 1.60 | 1.60 | 0.00 | 0.00 | -0.05 | -3.03 |
| India | 0.75 | 0.78 | 0.79 | 0.79 | 1.60 | 2.17 | 1.65 | 1.65 | 1.20 | 1.69 | 1.30 | 1.30 | 0.00 | 0.00 | -0.39 | -23.08 |
| Argentina | 0.63 | 0.50 | 0.55 | 0.55 | 3.33 | 2.70 | 3.40 | 3.40 | 2.11 | 1.36 | 1.87 | 1.87 | 0.00 | 0.00 | 0.51 | 37.91 |
| Mexico | 0.32 | 0.23 | 0.31 | 0.31 | 2.56 | 2.17 | 2.52 | 2.52 | 0.81 | 0.50 | 0.78 | 0.78 | 0.00 | 0.00 | 0.28 | 56.20 |
| Iraq | 0.50 | 0.50 | 1.25 | 1.25 | 0.86 | 0.90 | 0.92 | 0.92 | 0.43 | 0.45 | 1.15 | 1.15 | 0.00 | 0.00 | 0.70 | 155.56 |
| Algeria | 0.70 | 1.24 | 1.00 | 1.00 | 0.80 | 1.94 | 1.40 | 1.50 | 0.56 | 2.40 | 1.40 | 1.50 | 0.10 | 7.14 | -0.90 | -37.50 |
| Others | 3.36 | 4.40 | 4.52 | 4.52 | 2.00 | 1.82 | 1.80 | 1.79 | 6.73 | 7.99 | 8.12 | 8.09 | -0.03 | -0.31 | 0.10 | 1.28 |

World and Selected Countries and Regions

Table 06 Oats Area, Yield, and Production

| Country / Region | Area (Million hectares) | | | | Yield (Metric tons per hectare) | | | | Production (Million metric tons) | | | | Change in Production | | | |
|----------------------|----------------------------|---------|---------------|-------|------------------------------------|---------|---------------|------|-------------------------------------|---------|---------------|-------|----------------------|---------|----------------|---------|
| | 2008/09 | Prel. | 2010/11 Proj. | | 2008/09 | Prel. | 2010/11 Proj. | | 2008/09 | Prel. | 2010/11 Proj. | | From last month | | From last year | |
| | | 2009/10 | Sep | Oct | | 2009/10 | Sep | Oct | | 2009/10 | Sep | Oct | MMT | Percent | MMT | Percent |
| World | 12.80 | 11.89 | 11.71 | 11.69 | 2.04 | 2.01 | 1.85 | 1.84 | 26.14 | 23.86 | 21.67 | 21.48 | -0.20 | -0.91 | -2.38 | -9.98 |
| United States | 0.57 | 0.56 | 0.53 | 0.51 | 2.28 | 2.42 | 2.38 | 2.32 | 1.29 | 1.35 | 1.27 | 1.19 | -0.08 | -6.16 | -0.16 | -12.07 |
| Total Foreign | 12.24 | 11.33 | 11.18 | 11.18 | 2.03 | 1.99 | 1.83 | 1.82 | 24.84 | 22.51 | 20.41 | 20.29 | -0.12 | -0.58 | -2.22 | -9.85 |
| Russia | 3.70 | 3.35 | 3.40 | 3.40 | 1.57 | 1.61 | 1.32 | 1.32 | 5.80 | 5.40 | 4.50 | 4.50 | 0.00 | 0.00 | -0.90 | -16.67 |
| Canada | 1.45 | 0.98 | 0.85 | 0.85 | 2.95 | 2.97 | 2.82 | 2.71 | 4.27 | 2.91 | 2.40 | 2.30 | -0.10 | -4.17 | -0.61 | -20.85 |
| EU-27 | 2.99 | 2.89 | 2.75 | 2.74 | 3.00 | 2.92 | 2.82 | 2.82 | 8.98 | 8.43 | 7.74 | 7.73 | -0.02 | -0.25 | -0.70 | -8.35 |
| Poland | 0.55 | 0.53 | 0.53 | 0.53 | 2.29 | 2.70 | 2.41 | 2.41 | 1.26 | 1.42 | 1.27 | 1.27 | 0.00 | 0.00 | -0.16 | -10.92 |
| Finland | 0.36 | 0.32 | 0.28 | 0.28 | 3.42 | 3.46 | 2.95 | 2.95 | 1.21 | 1.12 | 0.81 | 0.81 | 0.00 | 0.00 | -0.31 | -27.35 |
| Spain | 0.51 | 0.55 | 0.54 | 0.54 | 2.35 | 1.64 | 1.94 | 1.92 | 1.19 | 0.91 | 1.04 | 1.03 | -0.02 | -1.82 | 0.12 | 13.13 |
| Germany | 0.18 | 0.16 | 0.14 | 0.14 | 4.43 | 5.02 | 4.29 | 4.29 | 0.79 | 0.82 | 0.60 | 0.60 | 0.00 | 0.00 | -0.22 | -26.74 |
| Sweden | 0.22 | 0.19 | 0.16 | 0.16 | 3.68 | 3.99 | 4.00 | 4.00 | 0.82 | 0.75 | 0.64 | 0.64 | 0.00 | 0.00 | -0.11 | -14.67 |
| United Kingdom | 0.14 | 0.13 | 0.13 | 0.13 | 5.81 | 5.78 | 5.80 | 5.80 | 0.78 | 0.76 | 0.73 | 0.73 | 0.00 | 0.00 | -0.03 | -4.23 |
| France | 0.10 | 0.12 | 0.10 | 0.10 | 4.72 | 4.90 | 4.55 | 4.55 | 0.47 | 0.57 | 0.46 | 0.46 | 0.00 | 0.00 | -0.11 | -19.72 |
| Italy | 0.15 | 0.13 | 0.13 | 0.13 | 2.41 | 2.35 | 2.35 | 2.35 | 0.36 | 0.32 | 0.32 | 0.32 | 0.00 | 0.00 | 0.00 | 0.00 |
| Denmark | 0.08 | 0.07 | 0.07 | 0.07 | 3.83 | 4.03 | 4.15 | 4.15 | 0.32 | 0.27 | 0.27 | 0.27 | 0.00 | 0.00 | 0.00 | 0.00 |
| Romania | 0.21 | 0.20 | 0.20 | 0.20 | 2.01 | 1.45 | 1.74 | 1.74 | 0.43 | 0.30 | 0.34 | 0.34 | 0.00 | 0.00 | 0.05 | 15.25 |
| Czech Republic | 0.05 | 0.05 | 0.05 | 0.05 | 3.18 | 3.30 | 3.08 | 3.08 | 0.16 | 0.17 | 0.16 | 0.16 | 0.00 | 0.00 | -0.01 | -3.03 |
| Hungary | 0.06 | 0.05 | 0.06 | 0.06 | 3.00 | 2.19 | 3.09 | 3.09 | 0.18 | 0.11 | 0.17 | 0.17 | 0.00 | 0.00 | 0.06 | 49.12 |
| Austria | 0.03 | 0.03 | 0.03 | 0.03 | 4.00 | 4.00 | 3.96 | 3.96 | 0.11 | 0.11 | 0.11 | 0.11 | 0.00 | 0.00 | -0.01 | -4.46 |
| Ireland | 0.02 | 0.02 | 0.02 | 0.02 | 7.70 | 7.50 | 7.48 | 7.48 | 0.18 | 0.14 | 0.16 | 0.16 | 0.00 | 0.00 | 0.02 | 16.30 |
| Lithuania | 0.07 | 0.06 | 0.06 | 0.06 | 2.07 | 2.23 | 2.33 | 2.33 | 0.14 | 0.14 | 0.14 | 0.14 | 0.00 | 0.00 | 0.00 | -2.10 |
| Australia | 0.87 | 0.92 | 0.92 | 0.92 | 1.33 | 1.37 | 1.37 | 1.37 | 1.16 | 1.26 | 1.26 | 1.26 | 0.00 | 0.00 | 0.00 | 0.00 |
| Ukraine | 0.45 | 0.42 | 0.40 | 0.40 | 2.11 | 1.74 | 1.50 | 1.50 | 0.95 | 0.73 | 0.60 | 0.60 | 0.00 | 0.00 | -0.13 | -17.81 |
| China | 0.50 | 0.50 | 0.50 | 0.50 | 1.20 | 1.20 | 1.20 | 1.20 | 0.60 | 0.60 | 0.60 | 0.60 | 0.00 | 0.00 | 0.00 | 0.00 |
| Belarus | 0.18 | 0.25 | 0.25 | 0.25 | 3.33 | 3.20 | 2.80 | 2.80 | 0.60 | 0.80 | 0.70 | 0.70 | 0.00 | 0.00 | -0.10 | -12.50 |
| Brazil | 0.35 | 0.35 | 0.35 | 0.35 | 1.36 | 1.36 | 1.36 | 1.36 | 0.48 | 0.48 | 0.48 | 0.48 | 0.00 | 0.00 | 0.00 | 0.00 |
| Argentina | 0.21 | 0.14 | 0.20 | 0.20 | 1.37 | 1.31 | 1.75 | 1.75 | 0.29 | 0.18 | 0.35 | 0.35 | 0.00 | 0.00 | 0.17 | 92.31 |
| Chile | 0.10 | 0.07 | 0.09 | 0.09 | 3.41 | 5.07 | 4.44 | 4.44 | 0.34 | 0.35 | 0.40 | 0.40 | 0.00 | 0.00 | 0.06 | 15.94 |
| Norway | 0.08 | 0.07 | 0.07 | 0.07 | 4.26 | 3.36 | 3.36 | 3.36 | 0.33 | 0.25 | 0.25 | 0.25 | 0.00 | 0.00 | 0.00 | 0.00 |
| Turkey | 0.10 | 0.10 | 0.10 | 0.10 | 2.00 | 2.10 | 2.10 | 2.10 | 0.20 | 0.21 | 0.21 | 0.21 | 0.00 | 0.00 | 0.00 | 0.00 |
| Kazakhstan | 0.16 | 0.16 | 0.16 | 0.16 | 1.00 | 1.00 | 1.00 | 1.00 | 0.16 | 0.16 | 0.16 | 0.16 | 0.00 | 0.00 | 0.00 | 0.00 |
| Serbia | 0.07 | 0.07 | 0.07 | 0.07 | 1.85 | 1.85 | 1.85 | 1.85 | 0.12 | 0.12 | 0.12 | 0.12 | 0.00 | 0.00 | 0.00 | 0.00 |
| Others | 1.03 | 1.07 | 1.07 | 1.07 | 0.55 | 0.60 | 0.60 | 0.60 | 0.57 | 0.64 | 0.64 | 0.64 | 0.00 | 0.00 | 0.00 | 0.00 |

World and Selected Countries and Regions

Table 07 Rye Area, Yield, and Production

| Country / Region | Area (Million hectares) | | | | Yield (Metric tons per hectare) | | | | Production (Million metric tons) | | | | Change in Production | | | |
|----------------------|----------------------------|---------|---------------|------|------------------------------------|---------|---------------|------|-------------------------------------|---------|---------------|-------|----------------------|---------|----------------|---------|
| | Prel. | | 2010/11 Proj. | | Prel. | | 2010/11 Proj. | | Prel. | | 2010/11 Proj. | | From last month | | From last year | |
| | 2008/09 | 2009/10 | Sep | Oct | 2008/09 | 2009/10 | Sep | Oct | 2008/09 | 2009/10 | Sep | Oct | MMT | Percent | MMT | Percent |
| World | 6.53 | 6.47 | 5.61 | 5.62 | 2.65 | 2.67 | 2.27 | 2.27 | 17.31 | 17.29 | 12.76 | 12.75 | 0.00 | -0.02 | -4.54 | -26.25 |
| United States | 0.11 | 0.10 | 0.10 | 0.11 | 1.86 | 1.75 | 1.70 | 1.77 | 0.20 | 0.18 | 0.17 | 0.19 | 0.02 | 9.88 | 0.01 | 6.18 |
| Total Foreign | 6.42 | 6.37 | 5.51 | 5.51 | 2.66 | 2.69 | 2.28 | 2.28 | 17.11 | 17.11 | 12.58 | 12.56 | -0.02 | -0.16 | -4.55 | -26.59 |
| EU-27 | 2.75 | 2.70 | 2.56 | 2.56 | 3.36 | 3.48 | 2.99 | 2.99 | 9.24 | 9.38 | 7.66 | 7.67 | 0.01 | 0.13 | -1.71 | -18.24 |
| Poland | 1.40 | 1.40 | 1.38 | 1.38 | 2.47 | 2.66 | 2.33 | 2.33 | 3.45 | 3.71 | 3.20 | 3.20 | 0.00 | 0.00 | -0.51 | -13.82 |
| Germany | 0.74 | 0.66 | 0.58 | 0.58 | 5.08 | 5.70 | 4.48 | 4.48 | 3.74 | 3.76 | 2.60 | 2.60 | 0.00 | 0.00 | -1.16 | -30.85 |
| Spain | 0.11 | 0.13 | 0.13 | 0.13 | 2.53 | 1.38 | 1.77 | 1.92 | 0.28 | 0.18 | 0.23 | 0.25 | 0.02 | 8.70 | 0.07 | 38.89 |
| Lithuania | 0.07 | 0.08 | 0.08 | 0.08 | 2.77 | 2.54 | 2.63 | 2.63 | 0.21 | 0.21 | 0.21 | 0.21 | 0.00 | 0.00 | 0.00 | 0.96 |
| Latvia | 0.06 | 0.06 | 0.06 | 0.06 | 3.31 | 2.75 | 3.00 | 3.00 | 0.20 | 0.16 | 0.17 | 0.17 | 0.00 | 0.00 | 0.00 | 1.85 |
| France | 0.03 | 0.03 | 0.03 | 0.03 | 4.73 | 5.20 | 5.38 | 5.38 | 0.12 | 0.13 | 0.14 | 0.14 | 0.00 | 0.00 | 0.01 | 7.69 |
| Denmark | 0.03 | 0.04 | 0.05 | 0.05 | 5.10 | 5.57 | 5.44 | 5.44 | 0.15 | 0.25 | 0.25 | 0.25 | 0.00 | 0.00 | 0.00 | 0.00 |
| Czech Republic | 0.04 | 0.04 | 0.03 | 0.03 | 4.88 | 4.68 | 4.67 | 4.33 | 0.21 | 0.18 | 0.14 | 0.13 | -0.01 | -7.14 | -0.05 | -26.97 |
| Austria | 0.05 | 0.05 | 0.05 | 0.05 | 4.13 | 3.80 | 3.80 | 3.80 | 0.22 | 0.19 | 0.18 | 0.18 | 0.00 | 0.00 | -0.01 | -5.91 |
| Sweden | 0.03 | 0.04 | 0.03 | 0.03 | 6.04 | 5.92 | 5.60 | 5.60 | 0.17 | 0.22 | 0.14 | 0.14 | 0.00 | 0.00 | -0.08 | -36.07 |
| Hungary | 0.04 | 0.04 | 0.04 | 0.04 | 2.59 | 1.80 | 2.22 | 2.22 | 0.11 | 0.07 | 0.08 | 0.08 | 0.00 | 0.00 | 0.01 | 10.81 |
| Slovakia | 0.03 | 0.02 | 0.02 | 0.02 | 3.08 | 2.85 | 2.18 | 2.18 | 0.08 | 0.06 | 0.04 | 0.04 | 0.00 | 0.00 | -0.02 | -35.09 |
| Finland | 0.02 | 0.02 | 0.03 | 0.03 | 2.54 | 2.63 | 2.80 | 2.80 | 0.06 | 0.04 | 0.07 | 0.07 | 0.00 | 0.00 | 0.03 | 66.67 |
| United Kingdom | 0.01 | 0.01 | 0.01 | 0.01 | 6.40 | 5.56 | 6.00 | 6.00 | 0.03 | 0.05 | 0.04 | 0.04 | 0.00 | 0.00 | -0.01 | -16.00 |
| Romania | 0.01 | 0.02 | 0.02 | 0.02 | 2.69 | 2.06 | 2.19 | 2.19 | 0.04 | 0.03 | 0.04 | 0.04 | 0.00 | 0.00 | 0.00 | 6.06 |
| Greece | 0.02 | 0.02 | 0.02 | 0.02 | 1.83 | 1.83 | 1.83 | 1.83 | 0.03 | 0.03 | 0.03 | 0.03 | 0.00 | 0.00 | 0.00 | 0.00 |
| Portugal | 0.02 | 0.02 | 0.02 | 0.02 | 1.10 | 0.89 | 1.00 | 1.00 | 0.02 | 0.02 | 0.02 | 0.02 | 0.00 | 0.00 | 0.00 | 11.76 |
| Russia | 2.20 | 2.15 | 1.70 | 1.70 | 2.05 | 2.00 | 1.47 | 1.47 | 4.50 | 4.30 | 2.50 | 2.50 | 0.00 | 0.00 | -1.80 | -41.86 |
| Belarus | 0.54 | 0.60 | 0.52 | 0.52 | 2.78 | 2.83 | 2.31 | 2.31 | 1.50 | 1.70 | 1.20 | 1.20 | 0.00 | 0.00 | -0.50 | -29.41 |
| Ukraine | 0.45 | 0.46 | 0.30 | 0.30 | 2.33 | 2.07 | 1.67 | 1.67 | 1.05 | 0.95 | 0.50 | 0.50 | 0.00 | 0.00 | -0.45 | -47.37 |
| Canada | 0.13 | 0.12 | 0.09 | 0.09 | 2.39 | 2.43 | 2.53 | 2.22 | 0.32 | 0.28 | 0.23 | 0.20 | -0.03 | -13.04 | -0.08 | -28.57 |
| Turkey | 0.13 | 0.13 | 0.13 | 0.13 | 1.92 | 2.08 | 2.08 | 2.08 | 0.25 | 0.27 | 0.27 | 0.27 | 0.00 | 0.00 | 0.00 | 0.00 |
| Argentina | 0.05 | 0.05 | 0.04 | 0.04 | 1.15 | 1.15 | 1.29 | 1.29 | 0.06 | 0.06 | 0.05 | 0.05 | 0.00 | 0.00 | -0.01 | -18.18 |
| Kazakhstan | 0.07 | 0.07 | 0.07 | 0.07 | 0.71 | 0.71 | 0.71 | 0.71 | 0.05 | 0.05 | 0.05 | 0.05 | 0.00 | 0.00 | 0.00 | 0.00 |
| Australia | 0.04 | 0.04 | 0.04 | 0.04 | 0.57 | 0.57 | 0.57 | 0.57 | 0.02 | 0.02 | 0.02 | 0.02 | 0.00 | 0.00 | 0.00 | 0.00 |
| Switzerland | 0.00 | 0.00 | 0.00 | 0.00 | 6.67 | 6.67 | 6.67 | 6.67 | 0.02 | 0.02 | 0.02 | 0.02 | 0.00 | 0.00 | 0.00 | 0.00 |
| Others | 0.06 | 0.06 | 0.06 | 0.06 | 1.69 | 1.38 | 1.38 | 1.38 | 0.11 | 0.09 | 0.09 | 0.09 | 0.00 | 0.00 | 0.00 | 0.00 |

World and Selected Countries and Regions

Table 08 Sorghum Area, Yield, and Production

| Country / Region | Area (Million hectares) | | | | Yield (Metric tons per hectare) | | | | Production (Million metric tons) | | | | Change in Production | | | |
|---------------------------|----------------------------|---------|---------------|-------|------------------------------------|---------|---------------|------|-------------------------------------|---------|---------------|-------|----------------------|---------|----------------|---------|
| | Prel. | | 2010/11 Proj. | | Prel. | | 2010/11 Proj. | | Prel. | | 2010/11 Proj. | | From last month | | From last year | |
| | 2008/09 | 2009/10 | Sep | Oct | 2008/09 | 2009/10 | Sep | Oct | 2008/09 | 2009/10 | Sep | Oct | MMT | Percent | MMT | Percent |
| World | 42.02 | 40.14 | 41.13 | 41.09 | 1.54 | 1.48 | 1.56 | 1.54 | 64.78 | 59.36 | 64.07 | 63.29 | -0.78 | -1.22 | 3.94 | 6.63 |
| United States | 2.94 | 2.23 | 2.10 | 1.89 | 4.08 | 4.35 | 4.56 | 4.54 | 12.00 | 9.73 | 9.56 | 8.57 | -1.00 | -10.43 | -1.16 | -11.94 |
| Total Foreign | 39.08 | 37.91 | 39.04 | 39.21 | 1.35 | 1.31 | 1.40 | 1.40 | 52.78 | 49.63 | 54.51 | 54.73 | 0.22 | 0.40 | 5.10 | 10.27 |
| Sub-Saharan Africa | | | | | | | | | | | | | | | | |
| Nigeria | 7.40 | 7.50 | 7.60 | 7.60 | 1.49 | 1.53 | 1.54 | 1.54 | 11.00 | 11.50 | 11.70 | 11.70 | 0.00 | 0.00 | 0.20 | 1.74 |
| Sudan | 6.40 | 6.00 | 6.20 | 6.20 | 0.66 | 0.44 | 0.65 | 0.68 | 4.19 | 2.63 | 4.00 | 4.20 | 0.20 | 5.00 | 1.57 | 59.70 |
| Ethiopia | 1.55 | 1.55 | 1.55 | 1.55 | 1.69 | 1.34 | 1.68 | 1.68 | 2.62 | 2.08 | 2.60 | 2.60 | 0.00 | 0.00 | 0.52 | 24.76 |
| Burkina | 1.62 | 1.62 | 1.62 | 1.62 | 1.16 | 0.94 | 1.11 | 0.99 | 1.88 | 1.52 | 1.80 | 1.60 | -0.20 | -11.11 | 0.08 | 5.12 |
| Tanzania | 0.90 | 0.90 | 0.90 | 0.90 | 0.78 | 0.79 | 0.94 | 0.94 | 0.70 | 0.71 | 0.85 | 0.85 | 0.00 | 0.00 | 0.14 | 19.72 |
| Niger | 1.50 | 1.50 | 1.50 | 1.50 | 0.81 | 0.49 | 0.60 | 0.60 | 1.21 | 0.74 | 0.90 | 0.90 | 0.00 | 0.00 | 0.16 | 21.79 |
| Uganda | 0.31 | 0.31 | 0.31 | 0.31 | 1.48 | 1.48 | 1.58 | 1.58 | 0.46 | 0.46 | 0.49 | 0.49 | 0.00 | 0.00 | 0.03 | 6.52 |
| Mozambique | 0.50 | 0.61 | 0.45 | 0.62 | 0.76 | 0.62 | 0.78 | 0.62 | 0.38 | 0.38 | 0.35 | 0.38 | 0.03 | 9.71 | 0.01 | 1.59 |
| Ghana | 0.34 | 0.34 | 0.34 | 0.34 | 0.97 | 1.03 | 0.81 | 1.03 | 0.33 | 0.35 | 0.28 | 0.35 | 0.08 | 27.27 | 0.00 | -0.28 |
| South Africa | 0.09 | 0.09 | 0.09 | 0.09 | 3.26 | 2.53 | 2.56 | 2.56 | 0.28 | 0.22 | 0.23 | 0.23 | 0.00 | 0.00 | 0.01 | 4.55 |
| South Asia | | | | | | | | | | | | | | | | |
| India | 7.70 | 7.00 | 7.50 | 7.50 | 0.95 | 1.00 | 1.00 | 1.00 | 7.31 | 6.98 | 7.50 | 7.50 | 0.00 | 0.00 | 0.52 | 7.45 |
| Pakistan | 0.24 | 0.24 | 0.24 | 0.24 | 0.60 | 0.60 | 0.60 | 0.60 | 0.15 | 0.15 | 0.15 | 0.15 | 0.00 | 0.00 | 0.00 | 0.00 |
| South America | | | | | | | | | | | | | | | | |
| Argentina | 0.45 | 0.70 | 0.80 | 0.80 | 3.69 | 5.50 | 4.75 | 4.75 | 1.66 | 3.85 | 3.80 | 3.80 | 0.00 | 0.00 | -0.05 | -1.30 |
| Brazil | 0.85 | 0.78 | 0.85 | 0.85 | 2.26 | 2.34 | 2.35 | 2.35 | 1.91 | 1.83 | 2.00 | 2.00 | 0.00 | 0.00 | 0.18 | 9.59 |
| Mexico | 1.89 | 1.64 | 1.85 | 1.85 | 3.74 | 3.58 | 3.84 | 3.84 | 7.07 | 5.85 | 7.10 | 7.10 | 0.00 | 0.00 | 1.25 | 21.37 |
| China | 0.49 | 0.45 | 0.43 | 0.43 | 3.75 | 3.67 | 3.95 | 3.95 | 1.84 | 1.65 | 1.70 | 1.70 | 0.00 | 0.00 | 0.05 | 3.03 |
| Australia | 0.77 | 0.55 | 0.60 | 0.60 | 3.51 | 2.94 | 2.83 | 2.83 | 2.69 | 1.60 | 1.70 | 1.70 | 0.00 | 0.00 | 0.10 | 6.25 |
| Egypt | 0.16 | 0.16 | 0.16 | 0.16 | 5.63 | 5.63 | 5.63 | 5.63 | 0.90 | 0.90 | 0.90 | 0.90 | 0.00 | 0.00 | 0.00 | 0.00 |
| EU-27 | 0.10 | 0.12 | 0.12 | 0.12 | 5.33 | 5.17 | 5.30 | 5.30 | 0.52 | 0.62 | 0.62 | 0.62 | 0.00 | 0.00 | 0.01 | 0.81 |
| France | 0.04 | 0.06 | 0.05 | 0.05 | 6.24 | 5.34 | 5.66 | 5.66 | 0.23 | 0.31 | 0.30 | 0.30 | 0.00 | 0.00 | -0.01 | -3.23 |
| Italy | 0.04 | 0.04 | 0.04 | 0.04 | 5.77 | 6.08 | 6.25 | 6.25 | 0.23 | 0.24 | 0.25 | 0.25 | 0.00 | 0.00 | 0.01 | 2.88 |
| Others | 5.84 | 5.86 | 5.93 | 5.93 | 0.98 | 0.96 | 0.99 | 1.00 | 5.69 | 5.62 | 5.85 | 5.96 | 0.11 | 1.85 | 0.34 | 6.01 |

World and Selected Countries and Regions

Table 09 Rice Area, Yield, and Production
World and Selected Countries and Regions

| Country / Region | Area (Million hectares) | | | | Yield (Metric tons per hectare) | | | | Production (Million metric tons) | | | | Change in Production | | | |
|---------------------------|----------------------------|---------|---------------|--------|------------------------------------|---------|---------------|-------|-------------------------------------|---------|---------------|--------|----------------------|---------|----------------|---------|
| | Prel. | | 2010/11 Proj. | | Prel. | | 2010/11 Proj. | | Prel. | | 2010/11 Proj. | | From last month | | From last year | |
| | 2008/09 | 2009/10 | Sep | Oct | 2008/09 | 2009/10 | Sep | Oct | 2008/09 | 2009/10 | Sep | Oct | MMT | Percent | MMT | Percent |
| World | 157.83 | 155.18 | 159.62 | 159.67 | 4.25 | 4.26 | 4.26 | 4.24 | 448.15 | 441.51 | 454.60 | 452.54 | -2.06 | -0.45 | 11.03 | 2.50 |
| United States | 1.20 | 1.26 | 1.47 | 1.47 | 7.68 | 7.94 | 7.90 | 7.50 | 6.40 | 6.92 | 7.98 | 7.57 | -0.41 | -5.12 | 0.65 | 9.40 |
| Total Foreign | 156.63 | 153.92 | 158.15 | 158.20 | 4.22 | 4.23 | 4.23 | 4.21 | 441.75 | 434.59 | 446.63 | 444.97 | -1.65 | -0.37 | 10.38 | 2.39 |
| East Asia | | | | | | | | | | | | | | | | |
| China | 29.24 | 29.68 | 29.72 | 29.72 | 6.56 | 6.59 | 6.54 | 6.54 | 134.33 | 137.00 | 136.00 | 136.00 | 0.00 | 0.00 | -1.00 | -0.73 |
| Japan | 1.63 | 1.62 | 1.62 | 1.62 | 6.78 | 6.52 | 6.66 | 6.66 | 8.03 | 7.71 | 7.85 | 7.85 | 0.00 | 0.00 | 0.14 | 1.80 |
| Korea, South | 0.94 | 0.92 | 0.90 | 0.90 | 6.99 | 7.19 | 7.07 | 7.07 | 4.84 | 4.92 | 4.71 | 4.71 | 0.00 | 0.00 | -0.21 | -4.19 |
| Korea, North | 0.59 | 0.59 | 0.58 | 0.58 | 4.89 | 5.02 | 4.96 | 4.96 | 1.86 | 1.91 | 1.87 | 1.87 | 0.00 | 0.00 | -0.04 | -2.09 |
| South Asia | | | | | | | | | | | | | | | | |
| India | 45.40 | 41.00 | 45.00 | 45.00 | 3.28 | 3.26 | 3.30 | 3.23 | 99.18 | 89.13 | 99.00 | 97.00 | -2.00 | -2.02 | 7.87 | 8.83 |
| Bangladesh | 11.10 | 11.60 | 11.80 | 11.80 | 4.19 | 4.01 | 4.11 | 4.11 | 31.00 | 31.00 | 32.30 | 32.30 | 0.00 | 0.00 | 1.30 | 4.19 |
| Pakistan | 2.91 | 2.80 | 2.40 | 2.40 | 3.55 | 3.64 | 3.31 | 3.31 | 6.90 | 6.80 | 5.30 | 5.30 | 0.00 | 0.00 | -1.50 | -22.06 |
| Southeast Asia | | | | | | | | | | | | | | | | |
| Indonesia | 12.17 | 12.10 | 12.10 | 12.10 | 4.88 | 4.75 | 4.87 | 4.87 | 38.30 | 37.10 | 38.00 | 38.00 | 0.00 | 0.00 | 0.90 | 2.43 |
| Vietnam | 7.33 | 7.35 | 7.35 | 7.35 | 5.30 | 5.31 | 5.39 | 5.39 | 24.39 | 24.40 | 24.75 | 24.75 | 0.00 | 0.00 | 0.35 | 1.44 |
| Thailand | 10.80 | 10.94 | 11.03 | 11.03 | 2.78 | 2.81 | 2.80 | 2.80 | 19.85 | 20.26 | 20.40 | 20.40 | 0.00 | 0.00 | 0.14 | 0.69 |
| Burma | 6.70 | 7.00 | 7.10 | 7.10 | 2.61 | 2.61 | 2.67 | 2.62 | 10.15 | 10.60 | 11.00 | 10.80 | -0.20 | -1.82 | 0.20 | 1.92 |
| Philippines | 4.53 | 4.41 | 4.45 | 4.45 | 3.77 | 3.52 | 3.85 | 3.85 | 10.76 | 9.77 | 10.80 | 10.80 | 0.00 | 0.00 | 1.03 | 10.52 |
| Cambodia | 2.61 | 2.68 | 2.75 | 2.75 | 2.75 | 2.84 | 2.77 | 2.77 | 4.52 | 4.78 | 4.80 | 4.80 | 0.00 | 0.00 | 0.02 | 0.42 |
| Laos | 0.83 | 0.84 | 0.86 | 0.86 | 3.54 | 3.61 | 3.68 | 3.68 | 1.76 | 1.82 | 1.90 | 1.90 | 0.00 | 0.00 | 0.08 | 4.34 |
| Malaysia | 0.66 | 0.67 | 0.67 | 0.67 | 3.58 | 3.68 | 3.70 | 3.70 | 1.54 | 1.59 | 1.60 | 1.60 | 0.00 | 0.00 | 0.01 | 0.63 |
| South America | | | | | | | | | | | | | | | | |
| Brazil | 2.91 | 2.77 | 2.85 | 2.85 | 4.33 | 4.07 | 4.33 | 4.33 | 8.57 | 7.66 | 8.40 | 8.40 | 0.00 | 0.00 | 0.74 | 9.70 |
| Peru | 0.38 | 0.40 | 0.39 | 0.39 | 7.35 | 7.40 | 7.44 | 7.44 | 1.93 | 2.06 | 1.98 | 1.98 | 0.00 | 0.00 | -0.09 | -4.17 |
| Sub-Saharan Africa | | | | | | | | | | | | | | | | |
| Nigeria | 2.30 | 2.40 | 2.45 | 2.45 | 2.32 | 2.36 | 2.45 | 2.45 | 3.20 | 3.40 | 3.60 | 3.60 | 0.00 | 0.00 | 0.20 | 5.88 |
| Madagascar | 1.36 | 1.38 | 1.38 | 1.38 | 2.88 | 3.05 | 3.05 | 3.05 | 2.51 | 2.69 | 2.69 | 2.69 | 0.00 | 0.00 | 0.00 | 0.00 |
| EU-27 | 0.41 | 0.46 | 0.47 | 0.46 | 6.16 | 6.81 | 6.73 | 6.77 | 1.62 | 1.98 | 2.01 | 2.01 | 0.00 | -0.20 | 0.02 | 1.11 |
| Italy | 0.22 | 0.24 | 0.24 | 0.24 | 5.99 | 6.65 | 6.66 | 6.66 | 0.82 | 0.96 | 0.98 | 0.98 | 0.00 | 0.00 | 0.01 | 1.35 |
| Spain | 0.10 | 0.12 | 0.13 | 0.12 | 6.63 | 7.55 | 7.31 | 7.51 | 0.45 | 0.63 | 0.65 | 0.64 | 0.00 | -0.62 | 0.01 | 1.91 |
| Egypt | 0.67 | 0.67 | 0.60 | 0.60 | 10.08 | 9.87 | 10.00 | 10.00 | 4.40 | 4.30 | 3.90 | 3.90 | 0.00 | 0.00 | -0.40 | -9.30 |
| Iran | 0.58 | 0.63 | 0.63 | 0.63 | 3.95 | 4.85 | 4.93 | 4.93 | 1.50 | 2.00 | 2.05 | 2.05 | 0.00 | 0.00 | 0.05 | 2.50 |
| Others | 10.59 | 11.04 | 11.07 | 11.13 | 2.99 | 3.02 | 3.01 | 3.07 | 20.63 | 21.71 | 21.72 | 22.27 | 0.55 | 2.55 | 0.56 | 2.58 |

Yield is on a rough basis, before the milling process
Production is on a milled basis, after the milling process

Table 10 Total Oilseed Area, Yield, and Production

World and Selected Countries and Regions

| Country / Region | Area (Million hectares) | | | | Yield (Metric tons per hectare) | | | | Production (Million metric tons) | | | | Change in Production | | | |
|---------------------------------|----------------------------|---------|---------------|--------|------------------------------------|---------|---------------|------|-------------------------------------|---------|---------------|--------|----------------------|---------|----------------|---------|
| | 2008/09 | Prel. | 2010/11 Proj. | | 2008/09 | Prel. | 2010/11 Proj. | | 2008/09 | Prel. | 2010/11 Proj. | | From last month | | From last year | |
| | | 2009/10 | Sep | Oct | | 2009/10 | Sep | Oct | | 2009/10 | Sep | Oct | MMT | Percent | MMT | Percent |
| World Total | -- | -- | -- | -- | -- | -- | -- | -- | 396.33 | 440.92 | 406.13 | 440.61 | 34.48 | 8.49 | -0.31 | -0.07 |
| Total Foreign | -- | -- | -- | -- | -- | -- | -- | -- | 307.13 | 342.02 | 303.18 | 337.82 | 34.64 | 11.43 | -4.20 | -1.23 |
| Oilseed, Copra | -- | -- | -- | -- | -- | -- | -- | -- | 5.88 | 5.88 | 5.96 | 5.96 | 0.00 | 0.00 | 0.08 | 1.36 |
| Oilseed, Palm Kernel | -- | -- | -- | -- | -- | -- | -- | -- | 11.70 | 12.03 | 12.85 | 12.75 | -0.10 | -0.79 | 0.72 | 5.99 |
| Major Oilseeds | 202.28 | 205.02 | 189.35 | 211.62 | 1.87 | 2.06 | 2.05 | 1.99 | 378.75 | 423.01 | 387.32 | 421.91 | 34.59 | 8.93 | -1.11 | -0.26 |
| United States | 35.27 | 35.51 | 37.34 | 37.29 | 2.53 | 2.79 | 2.76 | 2.76 | 89.20 | 98.90 | 102.95 | 102.80 | -0.16 | -0.15 | 3.90 | 3.94 |
| Foreign Oilseeds | 167.02 | 169.51 | 152.01 | 174.32 | 1.73 | 1.91 | 1.87 | 1.83 | 289.55 | 324.11 | 284.37 | 319.11 | 34.74 | 12.22 | -5.00 | -1.54 |
| South America | 45.96 | 50.23 | 50.15 | 51.22 | 2.25 | 2.80 | 2.63 | 2.64 | 103.61 | 140.79 | 132.03 | 135.17 | 3.14 | 2.37 | -5.63 | -4.00 |
| Brazil | 22.73 | 24.50 | 24.58 | 25.28 | 2.65 | 2.92 | 2.76 | 2.77 | 60.25 | 71.43 | 67.72 | 69.97 | 2.25 | 3.32 | -1.47 | -2.05 |
| Argentina | 18.39 | 20.74 | 20.45 | 20.83 | 1.93 | 2.79 | 2.63 | 2.62 | 35.51 | 57.94 | 53.74 | 54.62 | 0.89 | 1.65 | -3.32 | -5.72 |
| Paraguay | 2.82 | 2.85 | 2.98 | 2.98 | 1.55 | 2.60 | 2.27 | 2.27 | 4.37 | 7.40 | 6.77 | 6.77 | 0.00 | 0.00 | -0.63 | -8.52 |
| Bolivia | 1.19 | 1.14 | 1.10 | 1.10 | 1.72 | 1.74 | 1.76 | 1.76 | 2.05 | 1.98 | 1.94 | 1.94 | 0.00 | 0.00 | -0.04 | -2.03 |
| China | 26.98 | 26.43 | 22.03 | 25.98 | 2.15 | 2.17 | 1.89 | 2.15 | 58.12 | 57.27 | 41.62 | 55.81 | 14.19 | 34.09 | -1.46 | -2.55 |
| South Asia | 37.55 | 37.16 | 31.42 | 39.00 | 1.00 | 0.97 | 1.04 | 1.02 | 37.70 | 36.12 | 32.64 | 39.77 | 7.13 | 21.84 | 3.65 | 10.11 |
| India | 33.50 | 33.01 | 27.40 | 34.85 | 0.97 | 0.93 | 1.00 | 0.99 | 32.65 | 30.67 | 27.50 | 34.50 | 7.00 | 25.45 | 3.83 | 12.49 |
| Pakistan | 3.73 | 3.83 | 3.72 | 3.83 | 1.29 | 1.36 | 1.32 | 1.31 | 4.80 | 5.19 | 4.92 | 5.01 | 0.10 | 1.93 | -0.18 | -3.47 |
| EU-27 | 10.48 | 11.02 | 11.26 | 11.26 | 2.61 | 2.69 | 2.51 | 2.51 | 27.33 | 29.70 | 28.27 | 28.27 | 0.00 | 0.00 | -1.43 | -4.81 |
| France | 2.09 | 2.25 | 2.21 | 2.21 | 3.05 | 3.30 | 2.93 | 2.93 | 6.38 | 7.41 | 6.48 | 6.48 | 0.00 | 0.00 | -0.93 | -12.60 |
| Germany | 1.40 | 1.50 | 1.51 | 1.51 | 3.73 | 4.25 | 3.74 | 3.74 | 5.20 | 6.36 | 5.65 | 5.65 | 0.00 | 0.00 | -0.71 | -11.22 |
| Poland | 0.78 | 0.82 | 0.79 | 0.79 | 2.72 | 2.95 | 2.56 | 2.56 | 2.11 | 2.41 | 2.01 | 2.01 | 0.00 | 0.00 | -0.40 | -16.62 |
| Romania | 1.25 | 1.26 | 1.38 | 1.38 | 1.61 | 1.48 | 1.49 | 1.49 | 2.01 | 1.87 | 2.06 | 2.06 | 0.00 | 0.00 | 0.20 | 10.46 |
| Hungary | 0.83 | 0.82 | 0.82 | 0.82 | 2.67 | 2.32 | 2.33 | 2.33 | 2.21 | 1.91 | 1.90 | 1.90 | 0.00 | 0.00 | -0.01 | -0.47 |
| United Kingdom | 0.60 | 0.58 | 0.64 | 0.64 | 3.30 | 3.36 | 3.28 | 3.28 | 1.97 | 1.95 | 2.10 | 2.10 | 0.00 | 0.00 | 0.15 | 7.69 |
| Former Soviet Union - 12 | 17.53 | 16.60 | 17.92 | 17.92 | 1.34 | 1.29 | 1.18 | 1.16 | 23.56 | 21.39 | 21.18 | 20.78 | -0.40 | -1.89 | -0.61 | -2.86 |
| Russia | 7.34 | 6.95 | 7.70 | 7.70 | 1.21 | 1.16 | 1.06 | 0.97 | 8.85 | 8.03 | 8.15 | 7.45 | -0.70 | -8.59 | -0.58 | -7.27 |
| Ukraine | 6.45 | 5.98 | 6.07 | 6.07 | 1.66 | 1.58 | 1.47 | 1.52 | 10.70 | 9.45 | 8.90 | 9.20 | 0.30 | 3.37 | -0.25 | -2.65 |
| Uzbekistan | 1.42 | 1.30 | 1.30 | 1.30 | 1.27 | 1.17 | 1.48 | 1.48 | 1.80 | 1.53 | 1.93 | 1.93 | 0.00 | 0.00 | 0.40 | 26.23 |
| Canada | 7.76 | 7.83 | 7.82 | 7.82 | 2.07 | 2.05 | 1.93 | 1.93 | 16.09 | 16.03 | 15.07 | 15.07 | 0.00 | 0.00 | -0.97 | -6.03 |
| Africa | 12.42 | 12.33 | 4.86 | 12.53 | 0.87 | 0.86 | 0.77 | 0.87 | 10.81 | 10.57 | 3.76 | 10.86 | 7.10 | 188.63 | 0.29 | 2.72 |
| Nigeria | 2.08 | 2.08 | 0.84 | 2.08 | 1.05 | 1.05 | 0.77 | 1.05 | 2.18 | 2.19 | 0.64 | 2.19 | 1.55 | 240.68 | 0.00 | 0.00 |
| Southeast Asia | 3.70 | 3.73 | 1.96 | 3.74 | 1.34 | 1.34 | 1.04 | 1.34 | 4.94 | 4.98 | 2.04 | 4.99 | 2.95 | 144.25 | 0.01 | 0.20 |
| Indonesia | 1.38 | 1.38 | 0.63 | 1.38 | 1.50 | 1.49 | 1.29 | 1.49 | 2.06 | 2.06 | 0.81 | 2.06 | 1.25 | 153.94 | 0.00 | 0.00 |
| Australia | 1.98 | 1.68 | 2.13 | 2.20 | 1.24 | 1.55 | 1.56 | 1.57 | 2.45 | 2.60 | 3.32 | 3.45 | 0.13 | 3.94 | 0.85 | 32.67 |
| Others | 2.66 | 2.51 | 2.46 | 2.66 | 1.86 | 1.86 | 1.80 | 1.86 | 4.95 | 4.66 | 4.44 | 4.95 | 0.51 | 11.51 | 0.29 | 6.32 |

World Total and Total Foreign: (Major Oilseeds plus copra and palm kernel)

Major Oilseeds: (soybeans, sunflowerseeds, peanuts(inshell), cottonseed and rapeseed)

Table 11 Soybean Area, Yield, and Production

| Country / Region | Area (Million hectares) | | | | Yield (Metric tons per hectare) | | | | Production (Million metric tons) | | | | Change in Production | | | | | | |
|---------------------------------|----------------------------|---------|--------|---------------|------------------------------------|---------|-------|------|-------------------------------------|--------|---------|--------|----------------------|---------------|-------|-----------------|--|----------------|--|
| | 2008/09 | Prel. | | 2010/11 Proj. | | 2008/09 | Prel. | | 2010/11 Proj. | | 2008/09 | Prel. | | 2010/11 Proj. | | From last month | | From last year | |
| | | 2009/10 | Sep | Oct | 2009/10 | | Sep | Oct | 2009/10 | Sep | | Oct | MMT | Percent | MMT | Percent | | | |
| World | 96.40 | 101.98 | 101.92 | 102.35 | 2.20 | 2.55 | 2.50 | 2.49 | 211.96 | 259.92 | 254.89 | 255.26 | 0.37 | 0.14 | -4.66 | -1.79 | | | |
| United States | 30.22 | 30.91 | 31.56 | 31.09 | 2.67 | 2.96 | 3.00 | 2.98 | 80.75 | 91.42 | 94.79 | 92.76 | -2.03 | -2.14 | 1.34 | 1.46 | | | |
| Total Foreign | 66.18 | 71.07 | 70.36 | 71.26 | 1.98 | 2.37 | 2.28 | 2.28 | 131.22 | 168.50 | 160.10 | 162.50 | 2.40 | 1.50 | -6.00 | -3.56 | | | |
| South America | | | | | | | | | | | | | | | | | | | |
| Brazil | 21.70 | 23.50 | 23.50 | 24.10 | 2.66 | 2.94 | 2.77 | 2.78 | 57.80 | 69.00 | 65.00 | 67.00 | 2.00 | 3.08 | -2.00 | -2.90 | | | |
| Argentina | 16.00 | 18.60 | 18.00 | 18.00 | 2.00 | 2.93 | 2.78 | 2.78 | 32.00 | 54.50 | 50.00 | 50.00 | 0.00 | 0.00 | -4.50 | -8.26 | | | |
| Paraguay | 2.55 | 2.68 | 2.75 | 2.75 | 1.57 | 2.69 | 2.36 | 2.36 | 4.00 | 7.20 | 6.50 | 6.50 | 0.00 | 0.00 | -0.70 | -9.72 | | | |
| Bolivia | 0.89 | 0.90 | 0.85 | 0.85 | 1.80 | 1.85 | 1.86 | 1.86 | 1.60 | 1.67 | 1.58 | 1.58 | 0.00 | 0.00 | -0.09 | -5.11 | | | |
| Uruguay | 0.65 | 0.86 | 0.90 | 0.90 | 1.80 | 2.11 | 1.80 | 1.80 | 1.17 | 1.82 | 1.62 | 1.62 | 0.00 | 0.00 | -0.20 | -10.84 | | | |
| East Asia | | | | | | | | | | | | | | | | | | | |
| China | 9.13 | 8.80 | 8.60 | 8.40 | 1.70 | 1.67 | 1.67 | 1.71 | 15.54 | 14.70 | 14.40 | 14.40 | 0.00 | 0.00 | -0.30 | -2.04 | | | |
| Korea, South | 0.08 | 0.08 | 0.08 | 0.08 | 1.76 | 1.71 | 1.81 | 1.81 | 0.13 | 0.13 | 0.15 | 0.15 | 0.00 | 0.00 | 0.02 | 11.54 | | | |
| Korea, North | 0.14 | 0.14 | 0.14 | 0.14 | 1.15 | 1.08 | 1.19 | 1.19 | 0.16 | 0.15 | 0.16 | 0.16 | 0.00 | 0.00 | 0.01 | 6.67 | | | |
| Japan | 0.15 | 0.15 | 0.15 | 0.15 | 1.78 | 1.57 | 1.55 | 1.55 | 0.26 | 0.23 | 0.23 | 0.23 | 0.00 | 0.00 | 0.00 | -0.88 | | | |
| India | 9.60 | 9.60 | 9.00 | 9.50 | 0.95 | 0.91 | 0.98 | 0.97 | 9.10 | 8.75 | 8.80 | 9.20 | 0.40 | 4.55 | 0.45 | 5.14 | | | |
| Canada | 1.20 | 1.38 | 1.45 | 1.45 | 2.79 | 2.54 | 2.72 | 2.72 | 3.34 | 3.50 | 3.95 | 3.95 | 0.00 | 0.00 | 0.45 | 12.86 | | | |
| Former Soviet Union - 12 | | | | | | | | | | | | | | | | | | | |
| Ukraine | 0.55 | 0.63 | 0.90 | 0.90 | 1.45 | 1.68 | 1.67 | 1.67 | 0.80 | 1.05 | 1.50 | 1.50 | 0.00 | 0.00 | 0.45 | 42.86 | | | |
| Russia | 0.71 | 0.79 | 1.00 | 1.00 | 1.05 | 1.19 | 1.15 | 1.15 | 0.74 | 0.94 | 1.15 | 1.15 | 0.00 | 0.00 | 0.21 | 22.08 | | | |
| Southeast Asia | | | | | | | | | | | | | | | | | | | |
| Indonesia | 0.62 | 0.62 | 0.62 | 0.62 | 1.29 | 1.29 | 1.29 | 1.29 | 0.80 | 0.80 | 0.80 | 0.80 | 0.00 | 0.00 | 0.00 | 0.00 | | | |
| Vietnam | 0.19 | 0.20 | 0.20 | 0.20 | 1.40 | 1.50 | 1.50 | 1.50 | 0.27 | 0.30 | 0.30 | 0.30 | 0.00 | 0.00 | 0.00 | 0.00 | | | |
| Thailand | 0.12 | 0.11 | 0.12 | 0.12 | 1.50 | 1.55 | 1.50 | 1.50 | 0.18 | 0.17 | 0.18 | 0.18 | 0.00 | 0.00 | 0.01 | 5.88 | | | |
| Burma | 0.16 | 0.16 | 0.16 | 0.16 | 1.22 | 1.19 | 1.19 | 1.19 | 0.19 | 0.19 | 0.19 | 0.19 | 0.00 | 0.00 | 0.00 | 0.00 | | | |
| EU-27 | 0.24 | 0.30 | 0.35 | 0.35 | 2.70 | 2.83 | 2.86 | 2.86 | 0.64 | 0.86 | 1.00 | 1.00 | 0.00 | 0.00 | 0.14 | 16.41 | | | |
| Italy | 0.11 | 0.14 | 0.17 | 0.17 | 3.20 | 3.50 | 3.52 | 3.52 | 0.35 | 0.49 | 0.59 | 0.59 | 0.00 | 0.00 | 0.10 | 20.12 | | | |
| France | 0.02 | 0.04 | 0.05 | 0.05 | 2.82 | 2.59 | 2.60 | 2.60 | 0.06 | 0.11 | 0.13 | 0.13 | 0.00 | 0.00 | 0.02 | 14.04 | | | |
| Sub-Saharan Africa | | | | | | | | | | | | | | | | | | | |
| South Africa | 0.24 | 0.31 | 0.32 | 0.32 | 2.17 | 1.89 | 1.83 | 1.83 | 0.52 | 0.59 | 0.58 | 0.58 | 0.00 | 0.00 | -0.01 | -2.04 | | | |
| Nigeria | 0.44 | 0.44 | 0.44 | 0.44 | 1.02 | 1.02 | 1.02 | 1.02 | 0.45 | 0.45 | 0.45 | 0.45 | 0.00 | 0.00 | 0.00 | 0.00 | | | |
| Uganda | 0.15 | 0.15 | 0.15 | 0.15 | 1.10 | 1.10 | 1.10 | 1.10 | 0.17 | 0.17 | 0.17 | 0.17 | 0.00 | 0.00 | 0.00 | 0.00 | | | |
| Serbia | 0.15 | 0.15 | 0.15 | 0.15 | 2.41 | 2.41 | 2.41 | 2.41 | 0.35 | 0.35 | 0.35 | 0.35 | 0.00 | 0.00 | 0.00 | 0.00 | | | |
| Mexico | 0.08 | 0.07 | 0.07 | 0.07 | 2.01 | 1.50 | 1.50 | 1.50 | 0.15 | 0.11 | 0.11 | 0.11 | 0.00 | 0.00 | 0.00 | 0.00 | | | |
| Iran | 0.12 | 0.12 | 0.12 | 0.12 | 1.82 | 2.17 | 2.26 | 2.26 | 0.21 | 0.25 | 0.26 | 0.26 | 0.00 | 0.00 | 0.01 | 4.00 | | | |
| Others | 0.35 | 0.35 | 0.37 | 0.37 | 1.85 | 1.84 | 1.90 | 1.90 | 0.65 | 0.64 | 0.70 | 0.70 | 0.00 | 0.00 | 0.06 | 8.59 | | | |

World and Selected Countries and Regions

Table 12 Cottonseed Area, Yield, and Production

| Country / Region | Area (Million hectares) | | | | Yield (Metric tons per hectare) | | | | Production (Million metric tons) | | | | Change in Production | | | |
|---------------------------------|----------------------------|---------|---------------|-------|------------------------------------|---------|---------------|------|-------------------------------------|---------|---------------|-------|----------------------|---------|----------------|---------|
| | 2008/09 | Prel. | 2010/11 Proj. | | 2008/09 | Prel. | 2010/11 Proj. | | 2008/09 | Prel. | 2010/11 Proj. | | From last month | | From last year | |
| | | 2009/10 | Sep | Oct | | 2009/10 | Sep | Oct | | 2009/10 | Sep | Oct | MMT | Percent | MMT | Percent |
| World | 29.99 | 29.72 | 31.78 | 32.47 | 1.37 | 1.32 | 1.38 | 1.35 | 41.11 | 39.24 | 43.79 | 43.90 | 0.12 | 0.27 | 4.66 | 11.89 |
| United States | 3.06 | 3.05 | 4.36 | 4.36 | 1.27 | 1.24 | 1.33 | 1.33 | 3.90 | 3.76 | 5.78 | 5.80 | 0.02 | 0.29 | 2.03 | 54.04 |
| Total Foreign | 26.93 | 26.68 | 27.42 | 28.11 | 1.38 | 1.33 | 1.39 | 1.36 | 37.21 | 35.48 | 38.01 | 38.11 | 0.10 | 0.26 | 2.63 | 7.41 |
| China | 6.05 | 5.25 | 5.40 | 5.25 | 2.38 | 2.39 | 2.36 | 2.35 | 14.40 | 12.54 | 12.74 | 12.33 | -0.41 | -3.22 | -0.21 | -1.67 |
| South Asia | | | | | | | | | | | | | | | | |
| India | 9.37 | 10.26 | 10.30 | 10.90 | 1.02 | 0.96 | 1.05 | 1.01 | 9.60 | 9.80 | 10.80 | 11.00 | 0.20 | 1.85 | 1.20 | 12.24 |
| Pakistan | 2.90 | 3.00 | 3.00 | 3.00 | 1.31 | 1.39 | 1.33 | 1.33 | 3.79 | 4.18 | 4.00 | 4.00 | 0.00 | 0.00 | -0.18 | -4.31 |
| Former Soviet Union - 12 | | | | | | | | | | | | | | | | |
| Uzbekistan | 1.42 | 1.30 | 1.30 | 1.30 | 1.27 | 1.17 | 1.48 | 1.48 | 1.80 | 1.53 | 1.93 | 1.93 | 0.00 | 0.00 | 0.40 | 26.23 |
| Turkmenistan | 0.60 | 0.55 | 0.58 | 0.58 | 0.88 | 0.89 | 0.89 | 0.89 | 0.53 | 0.49 | 0.51 | 0.51 | 0.00 | 0.00 | 0.02 | 4.08 |
| Tajikistan | 0.23 | 0.17 | 0.17 | 0.17 | 0.83 | 0.88 | 0.88 | 0.88 | 0.19 | 0.15 | 0.15 | 0.15 | 0.00 | 0.00 | 0.00 | 0.00 |
| Kazakhstan | 0.16 | 0.12 | 0.13 | 0.13 | 1.06 | 1.25 | 1.04 | 1.04 | 0.17 | 0.15 | 0.14 | 0.14 | 0.00 | 0.00 | -0.02 | -10.00 |
| South America | | | | | | | | | | | | | | | | |
| Brazil | 0.84 | 0.84 | 1.00 | 1.00 | 2.42 | 2.51 | 2.61 | 2.61 | 2.04 | 2.10 | 2.61 | 2.61 | 0.00 | 0.00 | 0.51 | 24.10 |
| Argentina | 0.30 | 0.43 | 0.45 | 0.60 | 0.69 | 0.70 | 0.74 | 0.73 | 0.21 | 0.30 | 0.34 | 0.44 | 0.11 | 31.34 | 0.14 | 46.67 |
| Middle East | | | | | | | | | | | | | | | | |
| Turkey | 0.34 | 0.28 | 0.33 | 0.38 | 2.06 | 2.14 | 1.95 | 2.00 | 0.70 | 0.60 | 0.65 | 0.75 | 0.11 | 16.28 | 0.15 | 25.00 |
| Syria | 0.18 | 0.17 | 0.17 | 0.17 | 2.73 | 2.75 | 2.75 | 2.75 | 0.48 | 0.45 | 0.45 | 0.45 | 0.00 | 0.00 | 0.00 | 0.00 |
| Iran | 0.10 | 0.09 | 0.10 | 0.10 | 0.97 | 0.99 | 1.00 | 1.00 | 0.10 | 0.09 | 0.10 | 0.10 | 0.00 | 0.00 | 0.01 | 12.36 |
| Australia | 0.16 | 0.20 | 0.38 | 0.43 | 2.44 | 2.73 | 2.40 | 2.35 | 0.40 | 0.55 | 0.90 | 1.00 | 0.10 | 11.11 | 0.45 | 83.15 |
| EU-27 | 0.30 | 0.29 | 0.31 | 0.31 | 1.57 | 1.59 | 1.51 | 1.51 | 0.48 | 0.46 | 0.47 | 0.47 | 0.00 | 0.00 | 0.01 | 1.73 |
| Greece | 0.25 | 0.24 | 0.25 | 0.25 | 1.78 | 1.79 | 1.68 | 1.68 | 0.45 | 0.42 | 0.42 | 0.42 | 0.00 | 0.00 | 0.00 | 0.00 |
| Spain | 0.05 | 0.06 | 0.06 | 0.06 | 0.57 | 0.75 | 0.81 | 0.81 | 0.03 | 0.04 | 0.05 | 0.05 | 0.00 | 0.00 | 0.01 | 19.05 |
| Sub-Saharan Africa | | | | | | | | | | | | | | | | |
| Burkina | 0.44 | 0.45 | 0.45 | 0.45 | 0.53 | 0.46 | 0.54 | 0.54 | 0.24 | 0.21 | 0.24 | 0.24 | 0.00 | 0.00 | 0.04 | 16.91 |
| Mali | 0.19 | 0.20 | 0.20 | 0.20 | 0.52 | 0.60 | 0.57 | 0.57 | 0.10 | 0.12 | 0.11 | 0.11 | 0.00 | 0.00 | -0.01 | -5.83 |
| Cameroon | 0.16 | 0.15 | 0.15 | 0.15 | 0.78 | 0.75 | 0.83 | 0.83 | 0.13 | 0.11 | 0.13 | 0.13 | 0.00 | 0.00 | 0.01 | 11.61 |
| Sudan | 0.09 | 0.04 | 0.09 | 0.09 | 1.08 | 0.83 | 0.96 | 0.96 | 0.10 | 0.03 | 0.08 | 0.08 | 0.00 | 0.00 | 0.05 | 148.48 |
| Zimbabwe | 0.37 | 0.38 | 0.38 | 0.38 | 0.43 | 0.45 | 0.46 | 0.46 | 0.16 | 0.17 | 0.18 | 0.18 | 0.00 | 0.00 | 0.00 | 2.34 |
| Nigeria | 0.40 | 0.40 | 0.40 | 0.40 | 0.47 | 0.49 | 0.49 | 0.49 | 0.18 | 0.19 | 0.19 | 0.19 | 0.00 | 0.00 | 0.00 | 0.00 |
| Benin | 0.21 | 0.18 | 0.18 | 0.18 | 0.65 | 0.64 | 0.64 | 0.64 | 0.13 | 0.12 | 0.12 | 0.12 | 0.00 | 0.00 | 0.00 | 0.00 |
| Uganda | 0.27 | 0.27 | 0.27 | 0.27 | 0.32 | 0.27 | 0.32 | 0.32 | 0.09 | 0.07 | 0.09 | 0.09 | 0.00 | 0.00 | 0.01 | 17.57 |
| Egypt | 0.13 | 0.12 | 0.12 | 0.12 | 1.17 | 1.20 | 1.20 | 1.20 | 0.15 | 0.14 | 0.14 | 0.14 | 0.00 | 0.00 | 0.00 | 0.00 |
| Mexico | 0.12 | 0.12 | 0.12 | 0.12 | 1.85 | 1.85 | 1.85 | 1.85 | 0.23 | 0.23 | 0.23 | 0.23 | 0.00 | 0.00 | 0.00 | 0.00 |
| Burma | 0.30 | 0.30 | 0.30 | 0.30 | 0.63 | 0.63 | 0.63 | 0.63 | 0.19 | 0.19 | 0.19 | 0.19 | 0.00 | 0.00 | 0.00 | 0.00 |
| Others | 1.30 | 1.13 | 1.16 | 1.16 | 0.49 | 0.45 | 0.47 | 0.47 | 0.64 | 0.50 | 0.54 | 0.54 | 0.00 | 0.00 | 0.04 | 7.75 |

World and Selected Countries and Regions

Table 13 Peanut Area, Yield, and Production

| Country / Region | Area (Million hectares) | | | | Yield (Metric tons per hectare) | | | | Production (Million metric tons) | | | | Change in Production | | | |
|---------------------------|----------------------------|---------|---------------|-------|------------------------------------|---------|---------------|------|-------------------------------------|---------|---------------|-------|----------------------|---------|----------------|---------|
| | Prel. | | 2010/11 Proj. | | Prel. | | 2010/11 Proj. | | Prel. | | 2010/11 Proj. | | From last month | | From last year | |
| | 2008/09 | 2009/10 | Sep | Oct | 2008/09 | 2009/10 | Sep | Oct | 2008/09 | 2009/10 | Sep | Oct | MMT | Percent | MMT | Percent |
| World | 21.12 | 20.06 | 21.23 | 21.23 | 1.63 | 1.64 | 1.62 | 1.62 | 34.47 | 32.97 | 34.49 | 34.42 | -0.08 | -0.23 | 1.45 | 4.38 |
| United States | 0.61 | 0.44 | 0.51 | 0.51 | 3.84 | 3.83 | 3.64 | 3.48 | 2.34 | 1.68 | 1.85 | 1.78 | -0.08 | -4.21 | 0.10 | 6.03 |
| Total Foreign | 20.51 | 19.62 | 20.72 | 20.72 | 1.57 | 1.60 | 1.58 | 1.58 | 32.13 | 31.30 | 32.64 | 32.64 | 0.00 | 0.00 | 1.34 | 4.29 |
| China | 4.25 | 4.26 | 4.30 | 4.30 | 3.36 | 3.45 | 3.40 | 3.40 | 14.29 | 14.70 | 14.60 | 14.60 | 0.00 | 0.00 | -0.10 | -0.68 |
| South Asia | | | | | | | | | | | | | | | | |
| India | 6.40 | 5.30 | 6.35 | 6.35 | 0.98 | 0.92 | 1.01 | 1.01 | 6.25 | 4.90 | 6.40 | 6.40 | 0.00 | 0.00 | 1.50 | 30.61 |
| Pakistan | 0.11 | 0.11 | 0.11 | 0.11 | 0.90 | 0.90 | 0.90 | 0.90 | 0.10 | 0.10 | 0.10 | 0.10 | 0.00 | 0.00 | 0.00 | 0.00 |
| Sub-Saharan Africa | 7.36 | 7.61 | 7.61 | 7.61 | 0.92 | 0.91 | 0.91 | 0.91 | 6.75 | 6.92 | 6.91 | 6.91 | 0.00 | 0.00 | -0.02 | -0.22 |
| Nigeria | 1.25 | 1.25 | 1.25 | 1.25 | 1.24 | 1.24 | 1.24 | 1.24 | 1.55 | 1.55 | 1.55 | 1.55 | 0.00 | 0.00 | 0.00 | 0.00 |
| Senegal | 0.59 | 0.83 | 0.83 | 0.83 | 0.77 | 0.75 | 0.75 | 0.75 | 0.45 | 0.63 | 0.63 | 0.63 | 0.00 | 0.00 | 0.00 | 0.00 |
| Chad | 0.35 | 0.35 | 0.35 | 0.35 | 1.32 | 1.32 | 1.32 | 1.32 | 0.47 | 0.47 | 0.47 | 0.47 | 0.00 | 0.00 | 0.00 | 0.00 |
| Ghana | 0.47 | 0.47 | 0.47 | 0.47 | 0.94 | 0.94 | 0.94 | 0.94 | 0.44 | 0.44 | 0.44 | 0.44 | 0.00 | 0.00 | 0.00 | 0.00 |
| Sudan | 1.00 | 1.00 | 1.00 | 1.00 | 0.85 | 0.85 | 0.85 | 0.85 | 0.85 | 0.85 | 0.85 | 0.85 | 0.00 | 0.00 | 0.00 | 0.00 |
| Congo (Kinshasa) | 0.48 | 0.48 | 0.48 | 0.48 | 0.78 | 0.78 | 0.78 | 0.78 | 0.37 | 0.37 | 0.37 | 0.37 | 0.00 | 0.00 | 0.00 | 0.00 |
| Burkina | 0.35 | 0.35 | 0.35 | 0.35 | 1.01 | 1.01 | 1.01 | 1.01 | 0.35 | 0.35 | 0.35 | 0.35 | 0.00 | 0.00 | 0.00 | 0.00 |
| Guinea | 0.21 | 0.21 | 0.21 | 0.21 | 1.24 | 1.24 | 1.24 | 1.24 | 0.26 | 0.26 | 0.26 | 0.26 | 0.00 | 0.00 | 0.00 | 0.00 |
| Cameroon | 0.31 | 0.31 | 0.31 | 0.31 | 0.77 | 0.77 | 0.77 | 0.77 | 0.24 | 0.24 | 0.24 | 0.24 | 0.00 | 0.00 | 0.00 | 0.00 |
| Mali | 0.25 | 0.25 | 0.25 | 0.25 | 1.10 | 1.10 | 1.10 | 1.10 | 0.28 | 0.28 | 0.28 | 0.28 | 0.00 | 0.00 | 0.00 | 0.00 |
| Malawi | 0.22 | 0.22 | 0.22 | 0.22 | 1.20 | 1.20 | 1.20 | 1.20 | 0.27 | 0.27 | 0.27 | 0.27 | 0.00 | 0.00 | 0.00 | 0.00 |
| Cote d'Ivoire | 0.15 | 0.15 | 0.15 | 0.15 | 1.00 | 1.00 | 1.00 | 1.00 | 0.15 | 0.15 | 0.15 | 0.15 | 0.00 | 0.00 | 0.00 | 0.00 |
| Uganda | 0.21 | 0.21 | 0.21 | 0.21 | 0.70 | 0.70 | 0.70 | 0.70 | 0.15 | 0.15 | 0.15 | 0.15 | 0.00 | 0.00 | 0.00 | 0.00 |
| Central African Republic | 0.13 | 0.13 | 0.13 | 0.13 | 1.12 | 1.12 | 1.12 | 1.12 | 0.14 | 0.14 | 0.14 | 0.14 | 0.00 | 0.00 | 0.00 | 0.00 |
| Benin | 0.16 | 0.16 | 0.16 | 0.16 | 0.81 | 0.81 | 0.81 | 0.81 | 0.13 | 0.13 | 0.13 | 0.13 | 0.00 | 0.00 | 0.00 | 0.00 |
| Mozambique | 0.29 | 0.29 | 0.29 | 0.29 | 0.38 | 0.38 | 0.38 | 0.38 | 0.11 | 0.11 | 0.11 | 0.11 | 0.00 | 0.00 | 0.00 | 0.00 |
| Niger | 0.26 | 0.26 | 0.26 | 0.26 | 0.42 | 0.42 | 0.42 | 0.42 | 0.11 | 0.11 | 0.11 | 0.11 | 0.00 | 0.00 | 0.00 | 0.00 |
| South Africa | 0.06 | 0.06 | 0.06 | 0.06 | 2.33 | 2.28 | 2.02 | 2.02 | 0.13 | 0.13 | 0.12 | 0.12 | 0.00 | 0.00 | -0.02 | -11.54 |
| Southeast Asia | | | | | | | | | | | | | | | | |
| Indonesia | 0.75 | 0.75 | 0.75 | 0.75 | 1.67 | 1.67 | 1.67 | 1.67 | 1.25 | 1.25 | 1.25 | 1.25 | 0.00 | 0.00 | 0.00 | 0.00 |
| Burma | 0.65 | 0.67 | 0.67 | 0.67 | 1.54 | 1.49 | 1.49 | 1.49 | 1.00 | 1.00 | 1.00 | 1.00 | 0.00 | 0.00 | 0.00 | 0.00 |
| Vietnam | 0.26 | 0.26 | 0.26 | 0.26 | 2.09 | 2.12 | 2.12 | 2.12 | 0.53 | 0.55 | 0.55 | 0.55 | 0.00 | 0.00 | 0.00 | 0.00 |
| Thailand | 0.07 | 0.07 | 0.07 | 0.07 | 1.77 | 1.77 | 1.77 | 1.77 | 0.12 | 0.12 | 0.12 | 0.12 | 0.00 | 0.00 | 0.00 | 0.00 |
| South America | | | | | | | | | | | | | | | | |
| Argentina | 0.28 | 0.22 | 0.23 | 0.23 | 3.13 | 3.80 | 3.47 | 3.47 | 0.86 | 0.84 | 0.78 | 0.78 | 0.00 | 0.00 | -0.06 | -6.70 |
| Brazil | 0.12 | 0.10 | 0.10 | 0.10 | 2.62 | 2.47 | 2.50 | 2.50 | 0.30 | 0.24 | 0.25 | 0.25 | 0.00 | 0.00 | 0.02 | 6.38 |
| Egypt | 0.06 | 0.06 | 0.06 | 0.06 | 3.17 | 3.17 | 3.17 | 3.17 | 0.19 | 0.19 | 0.19 | 0.19 | 0.00 | 0.00 | 0.00 | 0.00 |
| Mexico | 0.05 | 0.05 | 0.05 | 0.05 | 1.56 | 1.56 | 1.56 | 1.56 | 0.07 | 0.07 | 0.07 | 0.07 | 0.00 | 0.00 | 0.00 | 0.00 |
| Others | 0.19 | 0.19 | 0.19 | 0.19 | 2.34 | 2.34 | 2.34 | 2.34 | 0.43 | 0.43 | 0.43 | 0.43 | 0.00 | 0.00 | 0.00 | 0.00 |

World and Selected Countries and Regions

Table 14 Sunflowerseed Area, Yield, and Production

| Country / Region | Area (Million hectares) | | | | Yield (Metric tons per hectare) | | | | Production (Million metric tons) | | | | Change in Production | | | |
|---------------------------------|----------------------------|---------|---------------|-------|------------------------------------|---------|---------------|------|-------------------------------------|---------|---------------|-------|----------------------|---------|----------------|---------|
| | 2008/09 | Prel. | 2010/11 Proj. | | 2008/09 | Prel. | 2010/11 Proj. | | 2008/09 | Prel. | 2010/11 Proj. | | From last month | | From last year | |
| | | 2009/10 | Sep | Oct | | 2009/10 | Sep | Oct | | 2009/10 | Sep | Oct | MMT | Percent | MMT | Percent |
| World | 23.68 | 22.24 | 23.85 | 23.79 | 1.41 | 1.37 | 1.32 | 1.31 | 33.28 | 30.37 | 31.51 | 31.10 | -0.41 | -1.30 | 0.73 | 2.39 |
| United States | 0.97 | 0.79 | 0.81 | 0.76 | 1.60 | 1.74 | 1.63 | 1.74 | 1.55 | 1.38 | 1.33 | 1.32 | -0.01 | -0.60 | -0.06 | -4.28 |
| Total Foreign | 22.71 | 21.45 | 23.04 | 23.04 | 1.40 | 1.35 | 1.31 | 1.29 | 31.73 | 28.99 | 30.18 | 29.78 | -0.40 | -1.33 | 0.79 | 2.71 |
| Former Soviet Union - 12 | | | | | | | | | | | | | | | | |
| Russia | 6.00 | 5.60 | 6.10 | 6.10 | 1.23 | 1.15 | 1.07 | 0.95 | 7.35 | 6.43 | 6.50 | 5.80 | -0.70 | -10.77 | -0.63 | -9.73 |
| Ukraine | 4.50 | 4.35 | 4.30 | 4.30 | 1.56 | 1.49 | 1.40 | 1.47 | 7.00 | 6.50 | 6.00 | 6.30 | 0.30 | 5.00 | -0.20 | -3.08 |
| Moldova | 0.23 | 0.25 | 0.25 | 0.25 | 1.63 | 1.60 | 1.60 | 1.60 | 0.37 | 0.40 | 0.40 | 0.40 | 0.00 | 0.00 | 0.00 | 0.00 |
| Kazakhstan | 0.58 | 0.72 | 1.10 | 1.10 | 0.32 | 0.51 | 0.41 | 0.41 | 0.19 | 0.37 | 0.45 | 0.45 | 0.00 | 0.00 | 0.08 | 22.28 |
| South America | | | | | | | | | | | | | | | | |
| Argentina | 1.81 | 1.49 | 2.00 | 2.00 | 1.35 | 1.55 | 1.70 | 1.70 | 2.44 | 2.30 | 3.40 | 3.40 | 0.00 | 0.00 | 1.10 | 47.83 |
| Uruguay | 0.06 | 0.01 | 0.02 | 0.02 | 0.93 | 0.90 | 1.60 | 1.60 | 0.05 | 0.01 | 0.03 | 0.03 | 0.00 | 0.00 | 0.02 | 255.56 |
| Bolivia | 0.30 | 0.24 | 0.25 | 0.25 | 1.48 | 1.32 | 1.42 | 1.42 | 0.45 | 0.31 | 0.36 | 0.36 | 0.00 | 0.00 | 0.05 | 14.52 |
| China | 0.96 | 0.92 | 0.93 | 0.93 | 1.86 | 1.77 | 1.81 | 1.81 | 1.79 | 1.63 | 1.68 | 1.68 | 0.00 | 0.00 | 0.05 | 3.07 |
| EU-27 | 3.75 | 3.92 | 3.80 | 3.80 | 1.90 | 1.77 | 1.79 | 1.79 | 7.13 | 6.93 | 6.80 | 6.80 | 0.00 | 0.00 | -0.13 | -1.92 |
| France | 0.63 | 0.73 | 0.70 | 0.70 | 2.51 | 2.36 | 2.36 | 2.36 | 1.58 | 1.71 | 1.65 | 1.65 | 0.00 | 0.00 | -0.06 | -3.51 |
| Hungary | 0.55 | 0.53 | 0.53 | 0.53 | 2.71 | 2.35 | 2.35 | 2.35 | 1.49 | 1.26 | 1.23 | 1.23 | 0.00 | 0.00 | -0.02 | -1.67 |
| Spain | 0.73 | 0.85 | 0.78 | 0.78 | 1.20 | 1.02 | 1.02 | 1.02 | 0.88 | 0.87 | 0.80 | 0.80 | 0.00 | 0.00 | -0.07 | -8.26 |
| Italy | 0.11 | 0.12 | 0.12 | 0.12 | 2.29 | 1.60 | 2.08 | 2.08 | 0.26 | 0.20 | 0.25 | 0.25 | 0.00 | 0.00 | 0.05 | 25.63 |
| Slovakia | 0.08 | 0.08 | 0.09 | 0.09 | 2.56 | 2.40 | 2.39 | 2.39 | 0.19 | 0.20 | 0.21 | 0.21 | 0.00 | 0.00 | 0.01 | 3.96 |
| South Asia | | | | | | | | | | | | | | | | |
| India | 1.53 | 1.40 | 1.50 | 1.50 | 0.65 | 0.59 | 0.60 | 0.60 | 1.00 | 0.82 | 0.90 | 0.90 | 0.00 | 0.00 | 0.08 | 9.76 |
| Pakistan | 0.45 | 0.45 | 0.45 | 0.45 | 1.52 | 1.52 | 1.52 | 1.52 | 0.69 | 0.69 | 0.69 | 0.69 | 0.00 | 0.00 | 0.00 | 0.00 |
| Turkey | 0.50 | 0.46 | 0.50 | 0.50 | 1.66 | 1.74 | 1.75 | 1.75 | 0.83 | 0.80 | 0.88 | 0.88 | 0.00 | 0.00 | 0.08 | 9.38 |
| South Africa | 0.64 | 0.40 | 0.55 | 0.55 | 1.26 | 1.25 | 1.27 | 1.27 | 0.80 | 0.50 | 0.70 | 0.70 | 0.00 | 0.00 | 0.20 | 40.00 |
| Burma | 0.55 | 0.55 | 0.55 | 0.55 | 0.67 | 0.67 | 0.67 | 0.67 | 0.37 | 0.37 | 0.37 | 0.37 | 0.00 | 0.00 | 0.00 | 0.00 |
| Serbia | 0.20 | 0.17 | 0.17 | 0.17 | 2.45 | 2.35 | 2.35 | 2.35 | 0.49 | 0.40 | 0.40 | 0.40 | 0.00 | 0.00 | 0.00 | 0.00 |
| Canada | 0.07 | 0.07 | 0.07 | 0.07 | 1.62 | 1.60 | 1.60 | 1.60 | 0.11 | 0.12 | 0.12 | 0.12 | 0.00 | 0.00 | 0.00 | 0.00 |
| Australia | 0.06 | 0.04 | 0.06 | 0.06 | 1.27 | 1.29 | 1.27 | 1.27 | 0.07 | 0.05 | 0.07 | 0.07 | 0.00 | 0.00 | 0.03 | 55.56 |
| Others | 0.53 | 0.41 | 0.44 | 0.44 | 1.13 | 0.93 | 1.02 | 1.02 | 0.59 | 0.38 | 0.45 | 0.45 | 0.00 | 0.00 | 0.06 | 16.71 |

World and Selected Countries and Regions

Table 15 Rapeseed Area, Yield, and Production

| Country / Region | Area (Million hectares) | | | | Yield (Metric tons per hectare) | | | | Production (Million metric tons) | | | | Change in Production | | | | | | |
|---------------------------------|----------------------------|---------|-------|---------------|------------------------------------|---------|-------|------|-------------------------------------|-------|---------|-------|----------------------|---------------|-------|-----------------|--|----------------|--|
| | 2008/09 | Prel. | | 2010/11 Proj. | | 2008/09 | Prel. | | 2010/11 Proj. | | 2008/09 | Prel. | | 2010/11 Proj. | | From last month | | From last year | |
| | | 2009/10 | Sep | Oct | 2009/10 | | Sep | Oct | 2009/10 | Sep | | Oct | MMT | Percent | MMT | Percent | | | |
| World | 31.09 | 31.02 | 31.80 | 31.77 | 1.86 | 1.95 | 1.80 | 1.80 | 57.92 | 60.52 | 57.14 | 57.23 | 0.09 | 0.16 | -3.29 | -5.43 | | | |
| United States | 0.40 | 0.33 | 0.60 | 0.58 | 1.64 | 2.03 | 1.75 | 2.00 | 0.66 | 0.67 | 1.06 | 1.15 | 0.09 | 8.81 | 0.48 | 71.75 | | | |
| Total Foreign | 30.69 | 30.69 | 31.19 | 31.19 | 1.87 | 1.95 | 1.80 | 1.80 | 57.27 | 59.85 | 56.08 | 56.08 | 0.00 | 0.00 | -3.77 | -6.29 | | | |
| EU-27 | 6.18 | 6.51 | 6.80 | 6.80 | 3.09 | 3.29 | 2.94 | 2.94 | 19.08 | 21.45 | 20.00 | 20.00 | 0.00 | 0.00 | -1.45 | -6.74 | | | |
| Germany | 1.37 | 1.47 | 1.49 | 1.49 | 3.76 | 4.29 | 3.77 | 3.77 | 5.16 | 6.31 | 5.60 | 5.60 | 0.00 | 0.00 | -0.71 | -11.21 | | | |
| France | 1.44 | 1.48 | 1.46 | 1.46 | 3.29 | 3.78 | 3.22 | 3.22 | 4.74 | 5.59 | 4.70 | 4.70 | 0.00 | 0.00 | -0.89 | -15.92 | | | |
| United Kingdom | 0.60 | 0.58 | 0.64 | 0.64 | 3.30 | 3.36 | 3.28 | 3.28 | 1.97 | 1.95 | 2.10 | 2.10 | 0.00 | 0.00 | 0.15 | 7.69 | | | |
| Poland | 0.77 | 0.81 | 0.78 | 0.78 | 2.73 | 2.96 | 2.56 | 2.56 | 2.11 | 2.40 | 2.00 | 2.00 | 0.00 | 0.00 | -0.40 | -16.67 | | | |
| Czech Republic | 0.36 | 0.36 | 0.36 | 0.36 | 3.16 | 3.22 | 3.20 | 3.20 | 1.13 | 1.14 | 1.14 | 1.14 | 0.00 | 0.00 | -0.01 | -0.70 | | | |
| Denmark | 0.17 | 0.16 | 0.15 | 0.15 | 3.66 | 3.90 | 3.53 | 3.53 | 0.63 | 0.64 | 0.53 | 0.53 | 0.00 | 0.00 | -0.11 | -16.54 | | | |
| Hungary | 0.25 | 0.26 | 0.26 | 0.26 | 2.62 | 2.23 | 2.31 | 2.31 | 0.66 | 0.58 | 0.60 | 0.60 | 0.00 | 0.00 | 0.02 | 3.27 | | | |
| Romania | 0.39 | 0.44 | 0.55 | 0.55 | 1.87 | 1.55 | 1.55 | 1.55 | 0.72 | 0.68 | 0.85 | 0.85 | 0.00 | 0.00 | 0.17 | 25.00 | | | |
| Slovakia | 0.16 | 0.17 | 0.16 | 0.16 | 2.60 | 2.32 | 2.14 | 2.14 | 0.42 | 0.39 | 0.34 | 0.34 | 0.00 | 0.00 | -0.05 | -11.63 | | | |
| Sweden | 0.09 | 0.10 | 0.11 | 0.11 | 2.85 | 2.99 | 2.95 | 2.95 | 0.26 | 0.30 | 0.31 | 0.31 | 0.00 | 0.00 | 0.01 | 3.68 | | | |
| Lithuania | 0.16 | 0.19 | 0.20 | 0.20 | 2.04 | 2.17 | 2.10 | 2.10 | 0.33 | 0.42 | 0.42 | 0.42 | 0.00 | 0.00 | 0.00 | 0.96 | | | |
| Latvia | 0.08 | 0.09 | 0.10 | 0.10 | 2.40 | 2.18 | 2.26 | 2.26 | 0.20 | 0.21 | 0.22 | 0.22 | 0.00 | 0.00 | 0.01 | 4.88 | | | |
| Austria | 0.06 | 0.06 | 0.05 | 0.05 | 3.11 | 3.00 | 3.00 | 3.00 | 0.17 | 0.17 | 0.16 | 0.16 | 0.00 | 0.00 | -0.01 | -5.26 | | | |
| Finland | 0.06 | 0.08 | 0.16 | 0.16 | 1.39 | 1.57 | 1.39 | 1.39 | 0.09 | 0.13 | 0.22 | 0.22 | 0.00 | 0.00 | 0.09 | 73.23 | | | |
| Estonia | 0.08 | 0.08 | 0.08 | 0.08 | 1.42 | 1.67 | 1.46 | 1.46 | 0.11 | 0.13 | 0.12 | 0.12 | 0.00 | 0.00 | -0.01 | -7.69 | | | |
| China | 6.59 | 7.20 | 7.10 | 7.10 | 1.84 | 1.90 | 1.80 | 1.80 | 12.10 | 13.70 | 12.80 | 12.80 | 0.00 | 0.00 | -0.90 | -6.57 | | | |
| South Asia | | | | | | | | | | | | | | | | | | | |
| India | 6.60 | 6.45 | 6.60 | 6.60 | 1.02 | 0.99 | 1.06 | 1.06 | 6.70 | 6.40 | 7.00 | 7.00 | 0.00 | 0.00 | 0.60 | 9.38 | | | |
| Pakistan | 0.27 | 0.27 | 0.27 | 0.27 | 0.83 | 0.85 | 0.85 | 0.85 | 0.23 | 0.23 | 0.23 | 0.23 | 0.00 | 0.00 | 0.00 | 0.00 | | | |
| Bangladesh | 0.30 | 0.30 | 0.30 | 0.30 | 0.73 | 0.75 | 0.75 | 0.75 | 0.22 | 0.23 | 0.23 | 0.23 | 0.00 | 0.00 | 0.00 | 0.00 | | | |
| Canada | 6.49 | 6.38 | 6.30 | 6.30 | 1.95 | 1.95 | 1.75 | 1.75 | 12.64 | 12.42 | 11.00 | 11.00 | 0.00 | 0.00 | -1.42 | -11.41 | | | |
| Australia | 1.69 | 1.39 | 1.65 | 1.65 | 1.09 | 1.37 | 1.36 | 1.36 | 1.84 | 1.91 | 2.25 | 2.25 | 0.00 | 0.00 | 0.34 | 17.80 | | | |
| Former Soviet Union - 12 | | | | | | | | | | | | | | | | | | | |
| Ukraine | 1.40 | 1.00 | 0.87 | 0.87 | 2.07 | 1.90 | 1.61 | 1.61 | 2.90 | 1.90 | 1.40 | 1.40 | 0.00 | 0.00 | -0.50 | -26.32 | | | |
| Russia | 0.63 | 0.56 | 0.60 | 0.60 | 1.20 | 1.20 | 0.83 | 0.83 | 0.75 | 0.67 | 0.50 | 0.50 | 0.00 | 0.00 | -0.17 | -25.04 | | | |
| Belarus | 0.29 | 0.34 | 0.27 | 0.27 | 2.03 | 1.91 | 1.48 | 1.48 | 0.59 | 0.65 | 0.40 | 0.40 | 0.00 | 0.00 | -0.25 | -38.46 | | | |
| Paraguay | 0.03 | 0.07 | 0.08 | 0.08 | 1.20 | 1.20 | 1.11 | 1.11 | 0.04 | 0.08 | 0.08 | 0.08 | 0.00 | 0.00 | 0.00 | -1.19 | | | |
| Others | 0.21 | 0.23 | 0.36 | 0.36 | 0.85 | 0.95 | 0.54 | 0.54 | 0.18 | 0.22 | 0.19 | 0.19 | 0.00 | 0.00 | -0.03 | -11.42 | | | |

World and Selected Countries and Regions

Table 16 Copra, Palm Kernel, and Palm Oil Production

| Country / Region | Production (Million metric tons) | | | | Change in Production | | | |
|-----------------------------|-------------------------------------|---------|---------------|-------|----------------------|---------|----------------|---------|
| | 2008/09 | Prel. | 2010/11 Proj. | | From last month | | From last year | |
| | | 2009/10 | Sep | Oct | MMT | Percent | MMT | Percent |
| Oilseed, Copra | | | | | | | | |
| Philippines | 2.52 | 2.52 | 2.60 | 2.60 | 0.00 | 0.00 | 0.08 | 0.03 |
| Indonesia | 1.60 | 1.60 | 1.60 | 1.60 | 0.00 | 0.00 | 0.00 | 0.00 |
| India | 0.74 | 0.74 | 0.74 | 0.74 | 0.00 | 0.00 | 0.00 | 0.00 |
| Vietnam | 0.24 | 0.24 | 0.24 | 0.24 | 0.00 | 0.00 | 0.00 | 0.00 |
| Mexico | 0.23 | 0.23 | 0.23 | 0.23 | 0.00 | 0.00 | 0.00 | 0.00 |
| Papua New Guinea | 0.13 | 0.13 | 0.13 | 0.13 | 0.00 | 0.00 | 0.00 | 0.00 |
| Thailand | 0.07 | 0.07 | 0.07 | 0.07 | 0.00 | 0.00 | 0.00 | 0.00 |
| Sri Lanka | 0.07 | 0.07 | 0.07 | 0.07 | 0.00 | 0.00 | 0.00 | 0.00 |
| Mozambique | 0.05 | 0.05 | 0.05 | 0.05 | 0.00 | 0.00 | 0.00 | 0.00 |
| Cote d'Ivoire | 0.05 | 0.05 | 0.05 | 0.05 | 0.00 | 0.00 | 0.00 | 0.00 |
| World | 5.88 | 5.88 | 5.96 | 5.96 | 0.00 | 0.00 | 0.08 | 0.01 |
| Oilseed, Palm Kernel | | | | | | | | |
| Indonesia | 5.47 | 5.60 | 6.14 | 6.14 | 0.00 | 0.00 | 0.54 | 0.10 |
| Malaysia | 4.44 | 4.65 | 4.83 | 4.83 | 0.00 | 0.00 | 0.17 | 0.04 |
| Nigeria | 0.67 | 0.67 | 0.67 | 0.67 | 0.00 | 0.00 | 0.00 | 0.00 |
| Thailand | 0.31 | 0.27 | 0.28 | 0.28 | 0.00 | 0.00 | 0.01 | 0.04 |
| Papua New Guinea | 0.11 | 0.12 | 0.12 | 0.12 | 0.00 | 0.00 | 0.00 | 0.00 |
| Colombia | 0.09 | 0.10 | 0.17 | 0.09 | -0.08 | -0.47 | -0.01 | -0.10 |
| Cote d'Ivoire | 0.08 | 0.08 | 0.08 | 0.08 | 0.00 | 0.00 | 0.00 | 0.00 |
| Cameroon | 0.07 | 0.07 | 0.07 | 0.07 | 0.00 | 0.00 | 0.00 | 0.00 |
| Congo (Kinshasa) | 0.06 | 0.06 | 0.06 | 0.06 | 0.00 | 0.00 | 0.00 | 0.00 |
| Guinea | 0.05 | 0.05 | 0.05 | 0.05 | 0.00 | 0.00 | 0.00 | 0.00 |
| World | 11.70 | 12.03 | 12.85 | 12.75 | -0.10 | -0.01 | 0.72 | 0.06 |
| Oil, Palm | | | | | | | | |
| Indonesia | 20.50 | 21.00 | 23.00 | 23.00 | 0.00 | 0.00 | 2.00 | 0.10 |
| Malaysia | 17.26 | 18.00 | 18.60 | 18.60 | 0.00 | 0.00 | 0.60 | 0.03 |
| Thailand | 1.54 | 1.35 | 1.50 | 1.50 | 0.00 | 0.00 | 0.16 | 0.12 |
| Nigeria | 0.85 | 0.85 | 0.85 | 0.85 | 0.00 | 0.00 | 0.00 | 0.00 |
| Colombia | 0.80 | 0.77 | 0.82 | 0.82 | 0.00 | 0.00 | 0.05 | 0.06 |
| Papua New Guinea | 0.40 | 0.44 | 0.44 | 0.44 | 0.00 | 0.00 | 0.00 | 0.00 |
| Ecuador | 0.44 | 0.43 | 0.46 | 0.46 | 0.00 | 0.00 | 0.03 | 0.07 |
| Cote d'Ivoire | 0.29 | 0.30 | 0.30 | 0.30 | 0.00 | 0.00 | 0.00 | 0.00 |
| Honduras | 0.25 | 0.25 | 0.25 | 0.25 | 0.00 | 0.00 | 0.00 | 0.00 |
| Costa Rica | 0.21 | 0.23 | 0.23 | 0.23 | 0.00 | 0.00 | 0.00 | 0.00 |
| World | 43.90 | 45.00 | 47.84 | 47.84 | 0.00 | 0.00 | 2.84 | 0.06 |

World and Selected Countries and Regions

Table 17 Cotton Area, Yield, and Production

| Country / Region | Area (Million 1000 HA) | | | | Yield (Kilograms per hectare) | | | | Production (Million 480 lb. bales) | | | | Change in Production | | | | | | |
|---------------------------------|---------------------------|---------|-------|---------------|----------------------------------|---------|-------|-------|---------------------------------------|--------|---------|--------|----------------------|---------------|--------|-----------------|--|----------------|--|
| | 2008/09 | Prel. | | 2010/11 Proj. | | 2008/09 | Prel. | | 2010/11 Proj. | | 2008/09 | Prel. | | 2010/11 Proj. | | From last month | | From last year | |
| | | 2009/10 | Sep | Oct | 2009/10 | | Sep | Oct | 2009/10 | Sep | | Oct | MBales | Percent | MBales | Percent | | | |
| World | 30.73 | 30.24 | 32.91 | 33.26 | 759 | 730 | 774 | 764 | 107.14 | 101.36 | 116.95 | 116.68 | -0.27 | -0.23 | 15.32 | 15.11 | | | |
| United States | 3.06 | 3.05 | 4.36 | 4.36 | 911 | 871 | 941 | 942 | 12.82 | 12.19 | 18.84 | 18.87 | 0.03 | 0.17 | 6.69 | 54.85 | | | |
| Total Foreign | 27.67 | 27.19 | 28.55 | 28.90 | 742 | 714 | 748 | 737 | 94.32 | 89.18 | 98.11 | 97.81 | -0.31 | -0.31 | 8.63 | 9.68 | | | |
| China | 6.05 | 5.25 | 5.40 | 5.25 | 1,321 | 1,327 | 1,310 | 1,306 | 36.70 | 32.00 | 32.50 | 31.50 | -1.00 | -3.08 | -0.50 | -1.56 | | | |
| South Asia | | | | | | | | | | | | | | | | | | | |
| India | 9.41 | 10.26 | 10.70 | 10.90 | 523 | 492 | 529 | 519 | 22.60 | 23.20 | 26.00 | 26.00 | 0.00 | 0.00 | 2.80 | 12.07 | | | |
| Pakistan | 2.90 | 3.00 | 3.00 | 3.00 | 653 | 697 | 675 | 675 | 8.70 | 9.60 | 9.30 | 9.30 | 0.00 | 0.00 | -0.30 | -3.13 | | | |
| Former Soviet Union - 12 | | | | | | | | | | | | | | | | | | | |
| Uzbekistan | 1.42 | 1.30 | 1.30 | 1.30 | 705 | 653 | 804 | 804 | 4.60 | 3.90 | 4.80 | 4.80 | 0.00 | 0.00 | 0.90 | 23.08 | | | |
| Turkmenistan | 0.60 | 0.55 | 0.58 | 0.58 | 490 | 495 | 492 | 492 | 1.35 | 1.25 | 1.30 | 1.30 | 0.00 | 0.00 | 0.05 | 4.00 | | | |
| Tajikistan | 0.23 | 0.17 | 0.17 | 0.17 | 454 | 480 | 495 | 495 | 0.48 | 0.38 | 0.38 | 0.38 | 0.00 | 0.00 | 0.00 | 0.00 | | | |
| Kazakhstan | 0.16 | 0.12 | 0.13 | 0.13 | 565 | 635 | 586 | 586 | 0.42 | 0.35 | 0.35 | 0.35 | 0.00 | 0.00 | 0.00 | 0.00 | | | |
| Sub-Saharan Africa | | | | | | | | | | | | | | | | | | | |
| Burkina | 0.44 | 0.42 | 0.48 | 0.48 | 421 | 363 | 413 | 413 | 0.85 | 0.70 | 0.90 | 0.90 | 0.00 | 0.00 | 0.20 | 28.57 | | | |
| Mali | 0.19 | 0.25 | 0.28 | 0.30 | 401 | 383 | 428 | 399 | 0.35 | 0.44 | 0.55 | 0.55 | 0.00 | 0.00 | 0.11 | 25.00 | | | |
| Zimbabwe | 0.37 | 0.38 | 0.40 | 0.40 | 244 | 286 | 286 | 286 | 0.42 | 0.50 | 0.53 | 0.53 | 0.00 | 0.00 | 0.03 | 5.00 | | | |
| Benin | 0.21 | 0.18 | 0.20 | 0.20 | 430 | 423 | 463 | 463 | 0.41 | 0.35 | 0.43 | 0.43 | 0.00 | 0.00 | 0.08 | 21.43 | | | |
| Cote d'Ivoire | 0.19 | 0.20 | 0.22 | 0.23 | 258 | 354 | 376 | 379 | 0.23 | 0.33 | 0.38 | 0.40 | 0.02 | 5.26 | 0.08 | 23.08 | | | |
| Cameroon | 0.16 | 0.15 | 0.16 | 0.16 | 340 | 327 | 374 | 374 | 0.25 | 0.23 | 0.28 | 0.28 | 0.00 | 0.00 | 0.05 | 22.22 | | | |
| Nigeria | 0.40 | 0.40 | 0.41 | 0.41 | 234 | 248 | 252 | 252 | 0.43 | 0.45 | 0.48 | 0.48 | 0.00 | 0.00 | 0.03 | 5.56 | | | |
| Sudan | 0.09 | 0.04 | 0.06 | 0.06 | 460 | 354 | 435 | 435 | 0.19 | 0.07 | 0.12 | 0.12 | 0.00 | 0.00 | 0.06 | 84.62 | | | |
| South America | | | | | | | | | | | | | | | | | | | |
| Brazil | 0.84 | 0.84 | 1.00 | 1.05 | 1,415 | 1,393 | 1,524 | 1,452 | 5.48 | 5.35 | 7.00 | 7.00 | 0.00 | 0.00 | 1.65 | 30.84 | | | |
| Argentina | 0.30 | 0.43 | 0.45 | 0.60 | 435 | 420 | 435 | 454 | 0.60 | 0.83 | 0.90 | 1.25 | 0.35 | 38.89 | 0.42 | 50.60 | | | |
| Paraguay | 0.05 | 0.02 | 0.05 | 0.05 | 331 | 381 | 340 | 340 | 0.08 | 0.04 | 0.08 | 0.08 | 0.00 | 0.00 | 0.04 | 122.86 | | | |
| Middle East | | | | | | | | | | | | | | | | | | | |
| Turkey | 0.34 | 0.28 | 0.35 | 0.38 | 1,236 | 1,361 | 1,452 | 1,393 | 1.93 | 1.75 | 2.30 | 2.40 | 0.10 | 4.35 | 0.65 | 37.14 | | | |
| Syria | 0.18 | 0.17 | 0.17 | 0.17 | 1,330 | 1,320 | 1,320 | 1,320 | 1.08 | 1.00 | 1.00 | 1.00 | 0.00 | 0.00 | 0.00 | 0.00 | | | |
| Iran | 0.10 | 0.09 | 0.10 | 0.10 | 708 | 726 | 762 | 762 | 0.33 | 0.30 | 0.35 | 0.35 | 0.00 | 0.00 | 0.05 | 16.67 | | | |
| Australia | 0.16 | 0.20 | 0.38 | 0.43 | 1,991 | 1,932 | 1,742 | 1,691 | 1.50 | 1.78 | 3.00 | 3.30 | 0.30 | 10.00 | 1.53 | 85.92 | | | |
| EU-27 | 0.31 | 0.29 | 0.33 | 0.33 | 882 | 758 | 903 | 870 | 1.24 | 1.02 | 1.39 | 1.34 | -0.05 | -3.61 | 0.32 | 30.88 | | | |
| Greece | 0.25 | 0.24 | 0.27 | 0.27 | 1,002 | 834 | 968 | 927 | 1.15 | 0.90 | 1.20 | 1.15 | -0.05 | -4.17 | 0.25 | 27.78 | | | |
| Spain | 0.05 | 0.06 | 0.06 | 0.06 | 325 | 428 | 615 | 615 | 0.08 | 0.11 | 0.18 | 0.18 | 0.00 | 0.00 | 0.07 | 59.09 | | | |
| Egypt | 0.13 | 0.12 | 0.16 | 0.16 | 791 | 790 | 816 | 816 | 0.48 | 0.43 | 0.60 | 0.60 | 0.00 | 0.00 | 0.17 | 38.89 | | | |
| Mexico | 0.10 | 0.07 | 0.11 | 0.11 | 1,222 | 1,313 | 1,241 | 1,241 | 0.57 | 0.42 | 0.61 | 0.61 | 0.00 | 0.00 | 0.19 | 44.55 | | | |
| Others | 2.35 | 2.02 | 1.99 | 1.97 | 287 | 273 | 286 | 285 | 3.09 | 2.53 | 2.61 | 2.59 | -0.03 | -0.96 | 0.06 | 2.21 | | | |

World and Selected Countries and Regions

TABLE 18

The table below presents a 29-year record of the differences between the October projection and the final estimate. Using world wheat production as an example, changes between the October projection and the final estimate have averaged 7.7 million tons (1.4 percent) and ranged from -26.7 to 9.5 million tons. The October projection has been below the final 20 times and above the final 9 times.

RELIABILITY OF PRODUCTION PROJECTIONS

| COMMODITY AND REGION | PROJECTION AND FINAL ESTIMATES, 1981/82 - 2008/09 1/ | | | | | |
|-------------------------|--|---------------------------|------------|--------------------|-------|-------|
| | Difference | | Lowest | Highest | Below | Above |
| | Average | Average | Difference | | Final | Final |
| | Percent | ---Million metric tons--- | | Number of years 2/ | | |
| WHEAT | | | | | | |
| World | 1.4 | 7.7 | -26.7 | 9.5 | 20 | 9 |
| U.S. | 0.3 | 0.2 | -1.2 | 0.5 | 11 | 13 |
| Foreign | 1.6 | 7.7 | -26.8 | 9.6 | 20 | 9 |
| COARSE GRAINS 3/ | | | | | | |
| World | 1.5 | 13.1 | -33.7 | 9.1 | 23 | 6 |
| U.S. | 2.0 | 4.6 | -14.5 | 17.9 | 18 | 11 |
| Foreign | 1.8 | 11.4 | -27.7 | 7.5 | 24 | 5 |
| RICE (Milled) | | | | | | |
| World | 2.0 | 7.0 | -20.9 | 3.0 | 24 | 4 |
| U.S. | 2.8 | 0.2 | -0.4 | 0.5 | 16 | 13 |
| Foreign | 2.0 | 7.0 | -21.0 | 3.1 | 24 | 5 |
| SOYBEANS | | | | | | |
| World | 3.4 | 5.6 | -13.8 | 28.7 | 15 | 14 |
| U.S. | 2.4 | 1.5 | -3.2 | 3.1 | 12 | 17 |
| Foreign | 6.1 | 5.6 | -11.5 | 28.1 | 15 | 14 |
| | ---Million 480-lb. bales--- | | | | | |
| COTTON | | | | | | |
| World | 3.1 | 2.9 | -10.6 | 9.9 | 17 | 11 |
| U.S. | 4.0 | 0.7 | -1.7 | 1.2 | 19 | 10 |
| Foreign | 3.6 | 2.7 | -10.4 | 10.2 | 15 | 13 |
| UNITED STATES | -----Million bushels----- | | | | | |
| CORN | 2.2 | 181 | -541 | 618 | 17 | 12 |
| SORGHUM | 3.4 | 20 | -59 | 71 | 17 | 12 |
| BARLEY | 1.0 | 4 | -12 | 24 | 8 | 12 |
| OATS | 0.7 | 2 | -18 | 16 | 6 | 9 |

1/ The final estimate for 1981/82-2008/09 is defined as the first November estimate following the marketing year.

2/ May not total 28 if projection was the same as the final.

3/ Includes corn, sorghum, barley, oats, rye, millet, and mixed grain.