



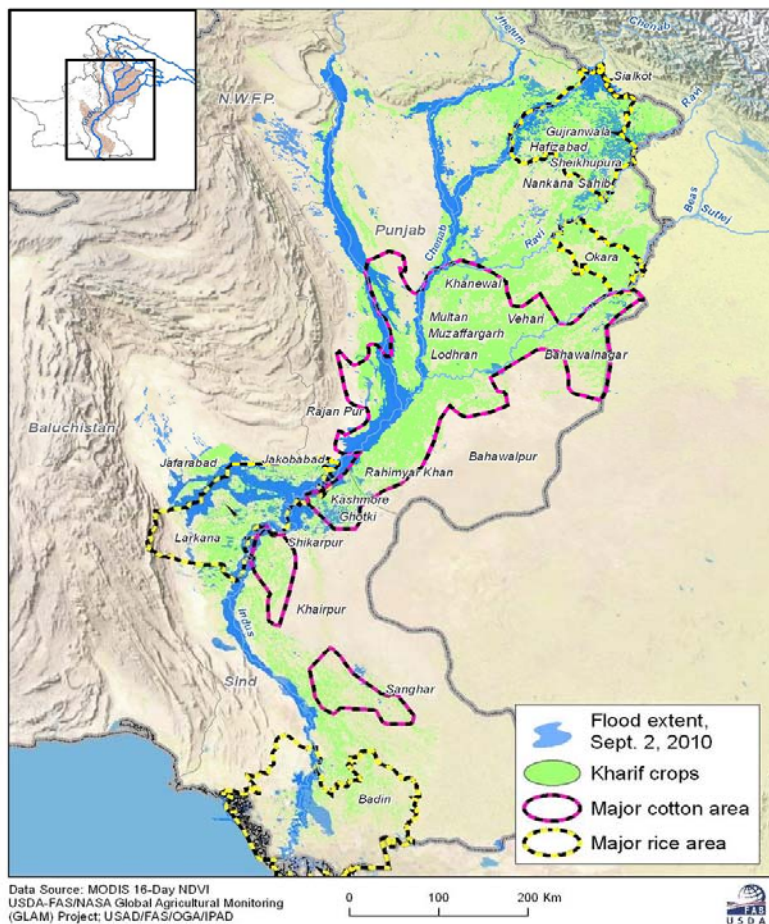
United States
Department of
Agriculture

Foreign
Agricultural
Service

Circular Series
WAP 09-10
September 2010

World Agricultural Production

The 2010/11 Pakistan Flood Damage on Crops



Pakistan: Rice and Cotton Production Regions Damaged by Floods

From late July through August, Pakistan received abundant to excessive monsoon rainfall across the country including many of the major rice and cotton growing areas. The excessive precipitation triggered severe overland and river flooding. The impact of the floodwater is most severe in Khyber Pakhtunkhwa (N.W.F.P), Baluchistan, Punjab, and the northern districts of Sindh. These provinces have experienced significant loss of cropland and damage to agricultural

Approved by the World Agricultural Outlook Board

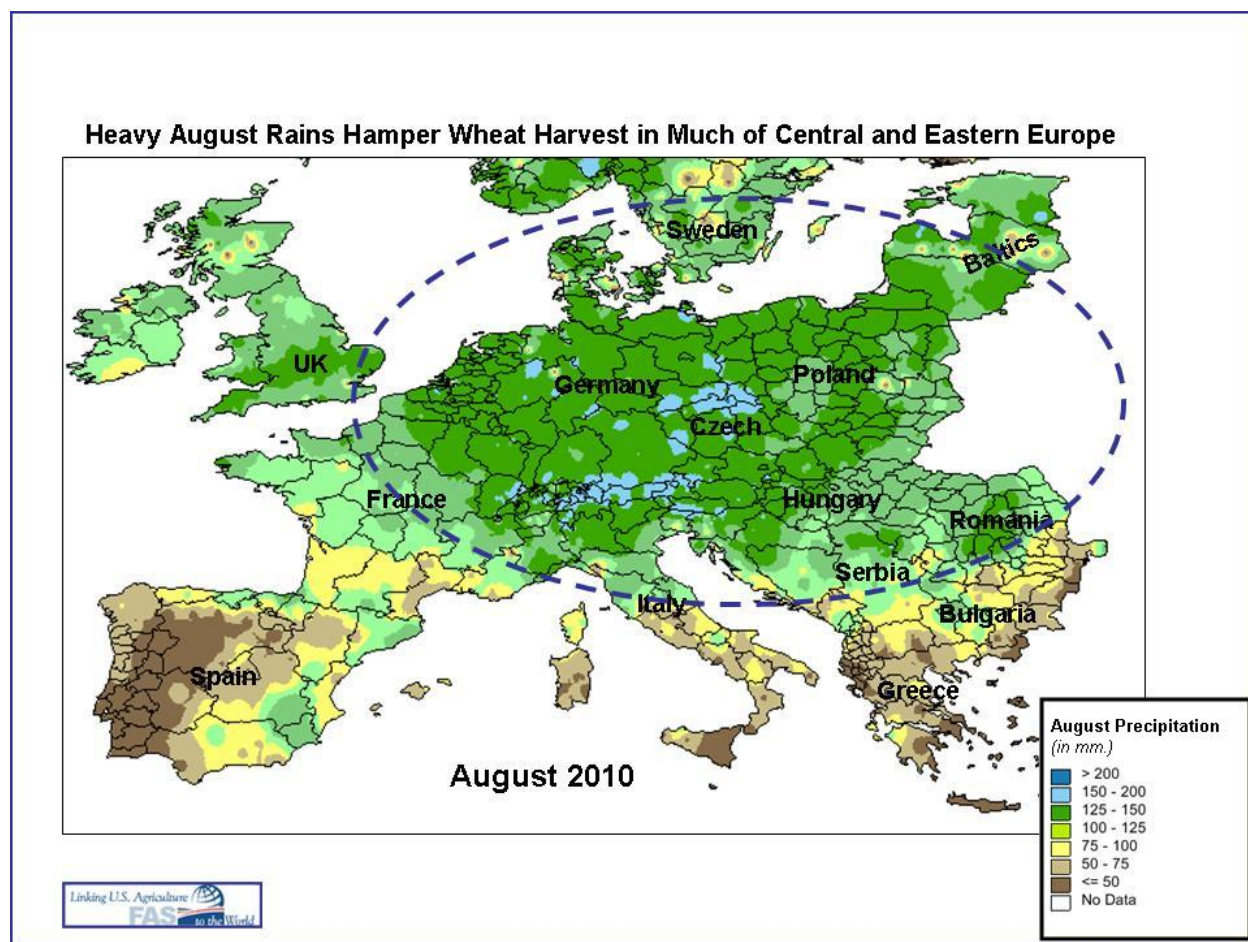
infrastructure. The major kharif season (June-November) crops are rice and cotton, but a substantial amount of corn, millet, and sorghum is grown during the kharif season as well. The floodwaters are receding in the mid- and upper-reaches of the Indus Valley but continue to expand in the southern district of Sindh. The final extent of the floodwaters and the resulting damage to crops is still uncertain. The USDA's preliminary assessment, based primarily on satellite imagery, indicates significant crop damage in major rice and cotton areas along the Indus River in Punjab and Sindh provinces.

The USDA forecasts 2010/11 Pakistan rice production at 5.3 million tons, down 19 percent from last month, and down 1.5 million or 22 percent from last year. Area is estimated at 2.4 million hectares, 14 percent down from last month, and down 0.4 million or 14 percent from last year. Yield is forecast at 3.31 tons per hectare, down 5 percent from last month and down 9 percent from last year. USDA damage estimates, based primarily on satellite imagery, indicate rice cropland losses of 400,000 hectares. The rice crop is at various development stages ranging from the early vegetative to the reproductive stage. Satellite-derived vegetative indices indicate that upland cropping areas will benefit from abundant soil moisture, where flooding did not occur.

Cotton production is forecast at 9.3 million 480-pound bales, down approximately 2 percent from last month, and down 0.3 million or 3 percent from last year. Area is estimated at 3.0 million hectares, 2 percent down from last month, and the same as last year. Yield is forecast at 675 kilograms per hectare, down 0.4 percent from last month and down 3 percent from last year. Analysis of satellite imagery suggests cotton cropland losses at around 200,000 hectares. The crop is at various development stages ranging from early vegetative to advanced maturity, and vegetative indices indicate that most upland cropping areas, away from the flooded areas, benefited from abundant soil moisture profiles. *(For more information, contact Dath Mita at 202-720-7339.)*

China Cotton Crop Revised Downward

China's 2010/11 cotton crop is estimated at 32.5 million bales, down 0.5 million or 1.5 percent from last month but up 1.6 percent from last year. The estimated area of 5.4 million hectares is unchanged from last month but up about 3 percent from last year. Farmers expanded cotton area planted in 2010 in response to rising cotton prices and increased demand for fabric and textiles. The estimated yield of 1,310 kilograms per hectare is down 2 percent from last month and down slightly from last year. Rainfall in August and early September was unusually heavy in several key cotton growing provinces, particularly Shandong and Henan. The excess rain likely had a negative impact on cotton yield and quality. Harvesting started in southern China in late August and will get underway in September on the North China Plain and Northwest China areas. The start of the harvest will be delayed by several days in parts of the North China Plain because cool spring weather caused significant planting and development delays early in the season. *(For more information, contact Paulette Sandene at 202-690-0133.)*



EU Wheat Harvest Hampered By August Rains

Wheat production in the European Union (EU) for 2010/11 is estimated at 135.1 million tons, down 2.4 million or almost 2 percent below last month's estimate. Harvested area is estimated at 25.5 million hectares, down 0.1 million from last month and down 0.2 million hectares from last year. Yield is estimated at 5.29 tons per hectare (t/ha), compared to 5.36 t/ha last month and 5.37 t/ha last year. Extremely wet conditions hindered the harvest in eastern and central Europe.

During August, between 4 and 10 inches of rain fell across central Europe during the wheat harvest, disrupting progress and lowering both yield and quality. Hungary's wheat crop is estimated at 3.5 million tons, down 0.5 million or 13 percent from last month and down 0.9 million or 20 percent from last year. Romania's crop is estimated at 5.7 million tons, down 0.5 million or 8 percent from last month but up 8 percent from last year.

Estimates for the EU's largest producers changed just marginally from last month. France's harvest is estimated at 37.7 million tons, up 0.15 million from last month. Dryness during 2010 reduced yield to 6.92 t/ha, compared to last year's 7.45 and the five-year average of 6.91 t/ha. Quality is expected to be higher than normal. Germany's crop, estimated at 23.9 million tons is down slightly (0.1 million) from last month, but down 1.3 million from last year. German farmers have struggled with the harvest as frequent, heavy rainfall saturated soils during August.

By the beginning of September, 5 to 10 percent of Germany's wheat crop remained unharvested and a larger-than-normal amount of wheat is expected to be of lower quality. *(For more information, contact Bryan Purcell at 202-690-0138.)*

EU Corn Production Revised Down

Corn production in the European Union (EU) is estimated at 54.7 million tons, down 1.2 million or 2 percent from last month and down 3 percent from last year. Estimated area is virtually unchanged from last month at 8.1 million hectares, but down 3 percent from last year. Recent local reports suggest that corn production in France, the EU's largest producer at 13.5 million tons, will be down 0.5 million tons from last month's estimate. This change is primarily due to a revised area figure of 1.5 million hectares, which is 3 percent below last month. Germany's corn crop is estimated at 3.7 million tons, down 0.4 million or 2 percent from last month. Spring weather was cooler than average, causing a slow start for corn and other grains. As a result, a portion of the corn originally intended for grain production will instead likely be cut for silage or for raw material for biogas fermenters. *(For more information, contact Bryan Purcell at 202-690-0138.)*

Russia Wheat: Harvest Data Reveal Impact of Volga Drought

The USDA forecasts Russia wheat production for 2010/11 at 42.5 million tons, down 2.5 million or 6 percent from last month and down 19.2 million or 31 percent from last year. Area is estimated at 26.7 million hectares, unchanged from last month and down 2.0 million from last year. Winter wheat accounts for slightly less than half of total wheat area but almost two-thirds of production due to inherently higher yields than spring wheat. Yield is estimated at 1.59 tons per hectare, down 6 percent from last month, down 26 percent from last year, and down 23 percent from the 5-year average.

Reports from the Ministry of Agriculture indicate that the wheat harvest in European Russia is almost complete. Combining is complete in the Southern and North Caucasus Districts, which together typically produce about half of Russia's winter wheat. Yield data indicate lower output than last year due in part to continuing drought in the northernmost part of the Southern District. In the Central and Volga Districts – where the drought was most severe – yields are reportedly down 40 and 54 percent from last year, respectively. Harvest in the Central District is complete, but harvest in the Volga District, which produces both winter and spring wheat, will likely continue until mid-September.

Harvest has just begun in the Ural and Siberian Districts, which produce most of the country's spring wheat. The persistent drought that reduced yields in western Russia extended throughout the Ural District, and into western Siberia as well. Although conditions were relatively favorable in a significant portion of Siberia's wheat-production region, overall spring wheat yield in Russia is almost certain to fall substantially from last year. *(For more information, contact Mark Lindeman at 202-690-0143.)*

Indonesia Rice: Production Forecast Lower Owing to Heavy Rainfall and Pests

The USDA forecasts 2009/10 milled rice production in Indonesia at 37.1 million tons, down 1.7 million or 4 percent from last month and down 3 percent from 2008/09. Harvested area is forecast at 12.1 million hectares, up 0.1 million or 1 percent from last month owing to diversion of land from corn production on Java. Rice yields are estimated at 4.75 tons per hectare, down 5 percent from last month. Seasonal weather conditions have been highly variable in Indonesia's primary rice growing regions owing to the transition from El Niño to La Niña weather systems during the 2009/10 rice growing season. Drought in October 2009 delayed the first crop planting window by 4 to 6 weeks. This was followed by eight consecutive months of above normal rainfall that caused a host of problems. Farmers have experienced difficulty in drying harvested crops, and milling rates are suffering as a result. The wet weather has also led to increasing amounts of pest and disease outbreaks, causing a net decline in national rice yields. Above-normal rainfall from April through August, which are generally the dry-season months, resulted in increased abandonment of corn on Java in certain areas. Much of this area was subsequently replanted to rice. Some lands now have been sown with four to five consecutive rice crops without a break.

The USDA forecasts 2010/11 milled rice production in Indonesia at 38.0 million tons, down 2.0 million or 5 percent from last month owing to the likelihood that increased disease and pest pressure will prevent the country from achieving normal trend yield growth. *(For more information, contact Michael Shean at 202-720-7366.)*

Indonesia Palm Oil: Production Forecast Lower Owing to Abnormal Rainfall

The USDA forecasts 2009/10 total palm oil production in Indonesia at 21.0 million tons, down 0.5 million or 2 percent from last month but up 2 percent from 2008/09. Seasonal rainfall totals since January have been above normal for the major producing areas in both Sumatra and Kalimantan. These two islands account for approximately 97 percent of total national production. The abnormally wet growing conditions and cloudiness since January have caused crop yields and oil extraction rates (OER) at crushing plants to decline relative to last year. Heavy rains have also reportedly interfered with normal harvesting operations. Recent crop travel by Foreign Agricultural Service staff through the major Indonesian palm oil production regions revealed that both large commercial producers and small farmers expected that production in calendar year 2010 would be lower than last year owing to persistent above normal rainfall. Crushers are reporting lower-than-expected OER from fresh fruit bunches (FFB) harvested between January and August, implying lower overall crop yields. National meteorological forecasts for continued higher-than-normal rainfall through December have convinced most producers that OER yields will remain below normal for at least the next few months. During the past 10 years, Indonesia's annual palm oil production growth rate was 18.5 percent. Current abnormal rainfall conditions are related to the La Niña weather pattern in Southeast Asia.

The USDA forecasts 2010/11 palm oil production at 23.0 million tons, down 1.5 million or 6 percent from last month. This crop is forecast on an October to September marketing year, with October 2010 being the first month of the new production season. *(For more information, Michael Shean at 202-720-7366.)*

This report uses information from the Foreign Agricultural Service's (FAS) global network of agricultural attachés and counselors, official statistics of foreign governments and other foreign source materials, and the analysis of economic data and satellite imagery. Estimates of foreign area, yield, and production are from the International Production Assessment Division, FAS, and are reviewed by USDA's Inter-Agency Commodity Estimates Committee. Estimates of U.S. area, yield, and production are from USDA's National Agricultural Statistics Service. Numbers within the report may not add to totals because of rounding. This report reflects official USDA estimates released in the World Agricultural Supply and Demand Estimates (WASDE-486) September 10, 2010.

Printed copies are available from the National Technical Information Service. Download an order form at http://www.ntis.gov/products/specialty/usda/fas_a-g.asp, or call NTIS at 1-800-363-2068.

The FAS/OGA International Production Assessment Branch prepared this report. The next issue of World Agricultural Production will be released after 9:30 a.m. Eastern Time, October 8, 2010.

Conversion Table		
Metric tons to bushels		
Wheat, soybeans	=	MT * 36.7437
Corn, sorghum, rye	=	MT * 39.36825
Barley	=	MT * 45.929625
Oats	=	MT * 68.894438
Metric tons to 480-lb bales		
Cotton	=	MT * 4.592917
Metric tons to hundredweight		
Rice	=	MT * 22.04622
Area & weight		
1 hectare	=	2.471044 acres
1 kilogram	=	2.204622 pounds



For further information, contact:
U.S. Department of Agriculture
Foreign Agricultural Service
Office of Global Analysis
International Production Assessment Division
Ag Box 1051, Room 4630, South Building
Washington, DC 20250-1051

Telephone: (202) 720-1157

Fax: (202) 720-1158

GENERAL INFORMATION

Director	Derrick Williams III	202-690-0131	derrick.williams@fas.usda.gov
Deputy Director	Tom St. Clair	202-720-2974	tom.stclair@fas.usda.gov
Deputy Director/SIA Manager	Curt Reynolds, PhD	202-690-0134	curt.reynoldsc@fas.usda.gov
USDA Remote Sensing Advisor	Glenn Bethel	202-720-1280	glenn.bethel@fas.usda.gov
Sr. Agricultural Economist	Paul Provance	202-720-0873	paul.provance@fas.usda.gov
Program Analyst	Mary Jackson	202-720-0886	mary.jackson@fas.usda.gov

COUNTRY- AND REGION-SPECIFIC INFORMATION

South America	Denise McWilliams, PhD	202-720-0107	denise.mcwilliams@fas.usda.gov
Europe and North Africa	Bryan Purcell	202-690-0138	bryan.purcell@fas.usda.gov
FSU-12, Russia	Mark Lindeman	202-690-0143	mark.lindeman@fas.usda.gov
Canada, Mexico, Central America	Arnella Trent	202-720-0881	arnella.trent@fas.usda.gov
China, East Asia	Paulette Sandene	202-690-0133	paulette.sandene@fas.usda.gov
South Asia, India	Dath Mita, PhD	202-720-7339	mita.dath@fas.usda.gov
Australia and New Zealand			
Africa	Curt Reynolds, PhD	202-690-0134	curt.reynoldsc@fas.usda.gov
Middle East and Southeast Asia	Michael Shean	202-720-7366	michael.shean@fas.usda.gov
Eastern United States	Robert Tetrault	202-720-1071	robert.tetrault@fas.usda.gov
Western United States	Jim Crutchfield	202-690-0135	james.crutchfield@fas.usda.gov
Brazil, Venezuela, Caribbean	William Baker, PhD	202-720-6740	william.baker@fas.usda.gov

Table 01 World Crop Production Summary

Million Metric Tons

Commodity	World -	Total Foreign	North America			EU-27 -	Former Soviet		Asia (WAP)					South America		Selected Other			All Others
			United States	Canada -	Mexico -		Russia -	Ukraine -	China -	India -	Indonesia	Pakistan	Thailand	Argentina	Brazil -	Australia	South Africa	Turkey -	
---Million metric tons---																			
Wheat																			
2008/09	683.3	615.2	68.0	28.6	4.0	151.1	63.7	25.9	112.5	78.6	nr	21.0	nr	10.1	5.9	21.4	2.1	16.8	73.6
2009/10 prel.	680.4	620.1	60.3	26.5	4.3	138.3	61.7	20.9	115.0	80.7	nr	24.0	nr	9.6	4.9	22.5	1.9	18.5	91.3
2010/11 proj.																			
Aug	645.7	584.1	61.6	20.5	4.4	137.5	45.0	17.0	114.5	80.7	nr	22.6	nr	12.0	5.0	23.0	1.6	17.0	83.3
Sep	643.0	581.4	61.6	22.5	4.4	135.1	42.5	17.0	114.5	80.7	nr	22.6	nr	12.0	5.0	23.0	1.6	17.0	83.5
Coarse Grains																			
2008/09	1,109.7	783.8	325.9	27.2	32.3	161.5	40.7	26.2	172.7	39.6	8.7	3.6	4.6	19.1	53.6	12.3	13.1	10.4	158.3
2009/10 prel.	1,106.6	757.4	349.2	22.4	27.8	153.1	31.8	24.1	161.4	34.2	7.0	3.6	4.2	28.0	58.6	11.6	14.5	11.1	164.2
2010/11 proj.																			
Aug	1,107.9	753.2	354.7	22.1	32.0	143.2	20.9	21.8	173.0	40.3	8.4	3.6	4.0	27.1	53.7	11.0	13.0	10.5	168.7
Sep	1,097.7	748.4	349.3	22.3	32.5	139.6	19.7	21.8	173.0	40.3	8.4	3.6	4.0	27.1	53.7	11.0	13.0	10.5	167.8
Rice, Milled																			
2008/09	448.2	441.8	6.4	nr	0.2	1.6	0.5	0.1	134.3	99.2	38.3	6.9	19.9	0.9	8.6	0.0	nr	0.4	131.0
2009/10 prel.	441.2	434.2	6.9	nr	0.2	2.0	0.6	0.1	137.0	89.1	37.1	6.8	20.3	0.9	7.6	0.1	nr	0.4	132.0
2010/11 proj.																			
Aug	459.2	451.5	7.7	nr	0.2	2.0	0.6	0.1	137.5	99.0	40.0	6.5	20.6	1.0	8.4	0.2	nr	0.5	134.9
Sep	454.6	446.6	8.0	nr	0.2	2.0	0.7	0.1	136.0	99.0	38.0	5.3	20.4	1.0	8.4	0.2	nr	0.5	134.9
Total Grains																			
2008/09	2,241.2	1,840.9	400.3	55.8	36.4	314.2	104.9	52.2	419.5	217.4	47.0	31.5	24.4	30.1	68.1	33.7	15.2	27.6	362.9
2009/10 prel.	2,228.2	1,811.7	416.4	48.9	32.3	293.4	94.1	45.1	413.4	204.0	44.1	34.5	24.4	38.5	71.2	34.2	16.4	29.9	387.4
2010/11 proj.																			
Aug	2,212.8	1,788.8	424.0	42.6	36.5	282.7	66.5	38.9	425.0	220.0	48.4	32.7	24.6	40.1	67.1	34.2	14.6	27.9	386.9
Sep	2,195.3	1,776.4	418.9	44.8	37.0	276.8	62.9	38.9	423.5	220.0	46.4	31.5	24.4	40.1	67.1	34.2	14.6	27.9	386.2
Oilseeds																			
2008/09	396.4	307.2	89.2	16.1	0.7	27.3	8.8	10.7	58.1	33.4	9.1	4.8	0.7	35.5	60.3	2.4	1.5	1.6	36.1
2009/10 prel.	440.4	341.5	98.9	15.4	0.6	29.7	8.0	9.5	57.3	31.4	9.3	5.2	0.6	57.9	71.5	2.6	1.2	1.5	39.7
2010/11 proj.																			
Aug	439.7	336.4	103.3	14.2	0.6	28.4	8.4	9.1	56.8	34.6	10.2	5.1	0.6	54.5	68.0	3.2	1.4	1.7	39.6
Sep	440.6	335.8	104.8	15.1	0.6	28.3	8.2	8.9	56.2	34.6	9.8	5.0	0.6	54.5	68.0	3.4	1.4	1.7	39.5
Cotton																			
2008/09	107.1	94.3	12.8	nr	0.6	1.2	nr	nr	36.7	22.6	0.0	8.7	0.0	0.6	5.5	1.5	0.0	1.9	14.9
2009/10 prel.	101.1	89.0	12.2	nr	0.4	1.0	nr	nr	32.0	23.2	0.0	9.6	0.0	0.8	5.4	1.6	0.0	1.8	13.1
2010/11 proj.																			
Aug	116.9	98.3	18.5	nr	0.6	1.4	nr	nr	33.0	26.0	0.0	9.5	0.0	0.9	7.0	2.3	0.0	2.3	15.2
Sep	117.0	98.1	18.8	nr	0.6	1.4	nr	nr	32.5	26.0	0.0	9.3	0.0	0.9	7.0	3.0	0.0	2.3	15.0

1/ Includes wheat, coarse grains, and rice (milled) shown above.

Table 02 Wheat Area, Yield, and Production

Country / Region	Area (Million hectares)				Yield (Metric tons per hectare)				Production (Million metric tons)				Change in Production			
	2008/09	Prel.	2010/11 Proj.		2008/09	Prel.	2010/11 Proj.		2008/09	Prel.	2010/11 Proj.		From last month		From last year	
		2009/10	Aug	Sep		2009/10	Aug	Sep		2009/10	Aug	Sep	MMT	Percent	MMT	Percent
World	225.53	225.72	221.78	222.13	3.03	3.01	2.91	2.89	683.26	680.43	645.74	643.01	-2.73	-0.42	-37.42	-5.50
United States	22.54	20.18	19.53	19.53	3.02	2.99	3.16	3.16	68.02	60.31	61.64	61.64	0.00	0.00	1.33	2.20
Total Foreign	202.99	205.54	202.25	202.60	3.03	3.02	2.89	2.87	615.24	620.12	584.09	581.37	-2.73	-0.47	-38.75	-6.25
China	23.62	24.20	24.30	24.30	4.76	4.75	4.71	4.71	112.46	115.00	114.50	114.50	0.00	0.00	-0.50	-0.43
South Asia																
India	28.15	27.90	28.70	28.70	2.79	2.89	2.81	2.81	78.57	80.68	80.71	80.71	0.00	0.00	0.03	0.04
Pakistan	8.55	9.05	9.00	9.00	2.45	2.66	2.51	2.51	20.96	24.03	22.60	22.60	0.00	0.00	-1.43	-5.96
Afghanistan	1.60	2.50	2.30	2.30	0.94	1.70	1.61	1.61	1.50	4.25	3.70	3.70	0.00	0.00	-0.55	-12.94
Former Soviet Union - 12																
Russia	26.65	28.70	26.70	26.70	2.39	2.15	1.69	1.59	63.70	61.70	45.00	42.50	-2.50	-5.56	-19.20	-31.12
Ukraine	7.05	6.75	6.45	6.45	3.67	3.10	2.64	2.64	25.90	20.90	17.00	17.00	0.00	0.00	-3.90	-18.66
Kazakhstan	13.50	14.70	14.50	14.50	0.93	1.16	0.79	0.79	12.55	17.00	11.50	11.50	0.00	0.00	-5.50	-32.35
Uzbekistan	1.36	1.40	1.40	1.40	4.41	4.43	4.64	4.64	6.00	6.20	6.50	6.50	0.00	0.00	0.30	4.84
EU-27	26.97	25.78	25.63	25.54	5.60	5.37	5.36	5.29	151.11	138.31	137.51	135.13	-2.38	-1.73	-3.18	-2.30
France	5.49	5.15	5.43	5.44	7.10	7.45	6.91	6.92	39.01	38.33	37.50	37.65	0.15	0.40	-0.68	-1.78
Germany	3.21	3.26	3.32	3.33	8.09	7.74	7.23	7.19	25.99	25.18	24.00	23.90	-0.10	-0.42	-1.28	-5.09
United Kingdom	2.08	1.81	1.94	1.94	8.28	7.93	8.09	8.09	17.23	14.38	15.70	15.70	0.00	0.00	1.32	9.19
Poland	2.28	2.35	2.20	2.20	4.07	4.17	4.00	4.00	9.28	9.79	8.80	8.80	0.00	0.00	-0.99	-10.11
Spain	2.06	1.77	1.80	1.80	3.32	2.69	3.00	2.83	6.83	4.75	5.40	5.10	-0.30	-5.56	0.35	7.37
Italy	2.45	1.83	1.70	1.70	3.83	3.35	3.94	3.94	9.40	6.14	6.70	6.70	0.00	0.00	0.56	9.07
Denmark	0.64	0.74	0.74	0.74	7.85	8.11	7.50	7.30	5.02	6.00	5.55	5.40	-0.15	-2.70	-0.60	-9.94
Hungary	1.13	1.14	1.03	0.99	5.00	3.85	3.88	3.55	5.62	4.40	4.00	3.50	-0.50	-12.50	-0.90	-20.38
Romania	2.17	2.15	2.05	2.05	3.48	2.47	3.02	2.78	7.56	5.30	6.20	5.70	-0.50	-8.06	0.40	7.55
Bulgaria	1.11	1.25	1.04	1.04	4.17	3.19	3.46	3.56	4.63	4.00	3.60	3.70	0.10	2.78	-0.30	-7.50
Canada	10.03	9.54	7.70	8.14	2.85	2.78	2.66	2.76	28.61	26.52	20.50	22.50	2.00	9.76	-4.02	-15.14
Australia	13.53	13.79	13.25	13.25	1.58	1.63	1.74	1.74	21.42	22.50	23.00	23.00	0.00	0.00	0.50	2.22
Middle East																
Turkey	7.70	7.80	8.00	8.00	2.18	2.37	2.13	2.13	16.80	18.45	17.00	17.00	0.00	0.00	-1.45	-7.86
Iran	5.85	6.00	6.40	6.40	1.71	2.00	2.25	2.25	10.00	12.00	14.40	14.40	0.00	0.00	2.40	20.00
Syria	1.49	1.50	1.35	1.35	1.44	2.67	2.78	2.78	2.14	4.00	3.75	3.75	0.00	0.00	-0.25	-6.25
North Africa																
Egypt	1.23	1.32	1.32	1.32	6.51	6.45	6.52	6.52	7.98	8.52	8.60	8.60	0.00	0.00	0.08	0.90
Morocco	2.86	2.98	2.80	2.80	1.31	2.14	1.61	1.75	3.73	6.37	4.50	4.90	0.40	8.89	-1.47	-23.08
Argentina	5.12	3.20	4.30	4.30	1.97	3.00	2.79	2.79	10.10	9.60	12.00	12.00	0.00	0.00	2.40	25.00
Others	17.74	18.44	18.15	18.15	2.35	2.39	2.28	2.26	41.71	44.08	41.33	41.08	-0.25	-0.60	-3.00	-6.81

World and Selected Countries and Regions

Table 03 Total Coarse Grain Area, Yield, and Production

Country / Region	Area (Million hectares)				Yield (Metric tons per hectare)				Production (Million metric tons)				Change in Production			
	2008/09	Prel.	2010/11 Proj.		2008/09	Prel.	2010/11 Proj.		2008/09	Prel.	2010/11 Proj.		From last month		From last year	
		2009/10	Aug	Sep		2009/10	Aug	Sep		2009/10	Aug	Sep	MMT	Percent	MMT	Percent
World	313.60	305.77	307.48	306.61	3.54	3.62	3.60	3.58	1,109.69	1,106.61	1,107.91	1,097.66	-10.25	-0.93	-8.94	-0.81
United States	36.94	36.36	36.54	36.54	8.82	9.60	9.71	9.56	325.87	349.22	354.68	349.28	-5.40	-1.52	0.06	0.02
Total Foreign	276.66	269.41	270.94	270.07	2.83	2.81	2.78	2.77	783.83	757.39	753.24	748.38	-4.85	-0.64	-9.01	-1.19
China	32.55	32.97	33.43	33.43	5.30	4.89	5.17	5.17	172.66	161.35	173.00	173.00	0.00	0.00	11.65	7.22
South America																
Brazil	15.38	14.14	14.03	14.03	3.49	4.15	3.83	3.83	53.62	58.61	53.73	53.73	0.00	0.00	-4.88	-8.32
Argentina	3.86	4.10	4.30	4.30	4.96	6.82	6.30	6.30	19.13	27.95	27.08	27.08	0.00	0.00	-0.87	-3.12
EU-27	33.33	32.21	30.55	30.23	4.84	4.75	4.69	4.62	161.49	153.05	143.16	139.62	-3.54	-2.47	-13.44	-8.78
France	4.10	4.21	3.87	3.84	7.56	7.49	7.11	7.08	30.97	31.54	27.51	27.18	-0.33	-1.19	-4.35	-13.81
Germany	3.83	3.52	3.38	3.19	6.30	6.63	6.31	6.01	24.12	23.30	21.32	19.16	-2.16	-10.13	-4.14	-17.78
Poland	6.25	6.16	5.98	5.99	2.93	3.24	2.95	2.95	18.31	19.94	17.62	17.65	0.03	0.17	-2.30	-11.52
Spain	4.54	4.14	4.03	4.03	3.66	2.93	3.37	3.32	16.62	12.14	13.58	13.39	-0.19	-1.38	1.25	10.29
Italy	1.52	1.40	1.33	1.33	7.63	7.29	7.67	7.52	11.55	10.22	10.20	10.00	-0.20	-1.96	-0.22	-2.17
Hungary	1.77	1.72	1.67	1.67	6.30	5.29	5.86	5.81	11.15	9.09	9.75	9.72	-0.04	-0.36	0.63	6.89
United Kingdom	1.19	1.32	1.06	1.05	5.92	5.80	5.75	5.76	7.06	7.66	6.07	6.06	-0.01	-0.21	-1.61	-20.95
Romania	3.10	3.10	2.99	2.99	3.10	2.91	3.12	3.19	9.62	9.04	9.32	9.51	0.20	2.09	0.47	5.22
Former Soviet Union - 12																
Russia	17.65	15.90	14.25	13.95	2.31	2.00	1.47	1.41	40.70	31.82	20.90	19.70	-1.20	-5.74	-12.12	-38.08
Ukraine	7.59	8.08	7.92	7.92	3.45	2.99	2.75	2.75	26.22	24.12	21.75	21.75	0.00	0.00	-2.37	-9.83
Kazakhstan	2.48	2.38	1.98	1.98	0.93	1.31	0.92	0.92	2.32	3.12	1.82	1.82	0.00	0.00	-1.30	-41.73
Africa	78.64	80.40	79.99	79.99	1.33	1.34	1.36	1.36	104.41	108.00	108.49	108.49	0.00	0.00	0.49	0.45
Nigeria	17.95	18.25	18.35	18.35	1.49	1.53	1.53	1.53	26.67	27.96	28.10	28.10	0.00	0.00	0.14	0.50
South Africa	3.77	4.13	3.90	3.90	3.47	3.51	3.34	3.34	13.08	14.53	13.03	13.03	0.00	0.00	-1.50	-10.31
Ethiopia	4.88	4.93	4.93	4.93	1.85	1.63	1.81	1.81	9.03	8.05	8.93	8.93	0.00	0.00	0.88	10.92
Egypt	0.99	1.04	1.08	1.08	7.77	7.57	7.46	7.46	7.71	7.88	8.06	8.06	0.00	0.00	0.18	2.26
India	26.65	24.28	26.49	26.49	1.49	1.41	1.52	1.52	39.61	34.16	40.30	40.30	0.00	0.00	6.14	17.97
Southeast Asia																
Indonesia	3.22	2.70	3.15	3.15	2.70	2.59	2.67	2.67	8.70	7.00	8.40	8.40	0.00	0.00	1.40	20.00
Philippines	2.66	2.52	2.65	2.65	2.58	2.47	2.57	2.57	6.85	6.23	6.80	6.80	0.00	0.00	0.57	9.13
Thailand	1.11	1.04	1.01	1.01	4.13	4.02	3.94	3.94	4.56	4.16	3.96	3.96	0.00	0.00	-0.20	-4.81
Mexico	9.63	8.20	9.46	9.46	3.35	3.39	3.39	3.44	32.25	27.80	32.03	32.53	0.50	1.56	4.73	17.02
Canada	6.33	5.20	5.01	4.77	4.29	4.30	4.42	4.69	27.18	22.37	22.11	22.35	0.24	1.09	-0.02	-0.11
Australia	6.79	6.08	5.86	5.86	1.81	1.90	1.87	1.87	12.27	11.57	10.97	10.97	0.00	0.00	-0.60	-5.19
Turkey	4.25	4.23	4.17	4.17	2.45	2.62	2.52	2.52	10.42	11.10	10.50	10.50	0.00	0.00	-0.60	-5.41
Others	24.56	25.00	26.70	26.70	2.50	2.60	2.56	2.53	61.44	65.00	68.26	67.41	-0.85	-1.25	2.42	3.72

World and Selected Countries and Regions

Table 04 Corn Area, Yield, and Production

Country / Region	Area (Million hectares)				Yield (Metric tons per hectare)				Production (Million metric tons)				Change in Production			
	2008/09	Prel.	2010/11 Proj.		2008/09	Prel.	2010/11 Proj.		2008/09	Prel.	2010/11 Proj.		From last month		From last year	
		2009/10	Aug	Sep		2009/10	Aug	Sep		2009/10	Aug	Sep	MMT	Percent	MMT	Percent
World	158.19	155.52	158.78	158.77	5.04	5.21	5.24	5.20	797.84	810.97	831.59	826.07	-5.52	-0.66	15.10	1.86
United States	31.80	32.21	32.78	32.78	9.66	10.34	10.36	10.20	307.14	333.01	339.49	334.27	-5.22	-1.54	1.26	0.38
Total Foreign	126.39	123.31	126.00	125.98	3.88	3.88	3.91	3.90	490.70	477.96	492.10	491.80	-0.30	-0.06	13.84	2.90
China	29.86	30.40	30.80	30.80	5.56	5.10	5.39	5.39	165.90	155.00	166.00	166.00	0.00	0.00	11.00	7.10
South America																
Brazil	14.10	12.93	12.75	12.75	3.62	4.34	4.00	4.00	51.00	56.10	51.00	51.00	0.00	0.00	-5.10	-9.09
Argentina	2.50	2.70	2.70	2.70	6.00	8.33	7.78	7.78	15.00	22.50	21.00	21.00	0.00	0.00	-1.50	-6.67
Mexico	7.32	6.23	7.20	7.20	3.31	3.42	3.33	3.40	24.23	21.30	24.00	24.50	0.50	2.08	3.20	15.02
EU-27	8.79	8.32	8.07	8.06	7.09	6.80	6.94	6.79	62.32	56.55	55.95	54.71	-1.25	-2.23	-1.84	-3.26
France	1.70	1.68	1.58	1.53	9.31	9.11	8.89	8.82	15.84	15.30	14.00	13.50	-0.50	-3.57	-1.80	-11.76
Italy	0.99	0.92	0.86	0.86	9.80	9.40	10.00	9.77	9.72	8.60	8.60	8.40	-0.20	-2.33	-0.20	-2.33
Hungary	1.20	1.18	1.13	1.17	7.39	6.36	7.17	6.92	8.87	7.50	8.10	8.10	0.00	0.00	0.60	8.00
Romania	2.45	2.35	2.25	2.25	3.21	3.19	3.42	3.51	7.87	7.50	7.70	7.90	0.20	2.60	0.40	5.33
Poland	0.32	0.27	0.28	0.29	5.82	6.23	5.89	5.79	1.84	1.71	1.65	1.68	0.03	1.82	-0.03	-1.58
India	8.20	8.00	8.20	8.20	2.41	2.09	2.44	2.44	19.73	16.68	20.00	20.00	0.00	0.00	3.32	19.90
Canada	1.17	1.14	1.20	1.20	9.06	8.37	8.75	9.17	10.59	9.56	10.50	11.00	0.50	4.76	1.44	15.05
Indonesia	3.22	2.70	3.15	3.15	2.70	2.59	2.67	2.67	8.70	7.00	8.40	8.40	0.00	0.00	1.40	20.00
Ukraine	2.40	2.10	2.60	2.60	4.75	5.00	4.42	4.42	11.40	10.50	11.50	11.50	0.00	0.00	1.00	9.52
Serbia	1.28	1.20	1.30	1.30	4.80	5.33	5.00	5.00	6.13	6.40	6.50	6.50	0.00	0.00	0.10	1.56
Egypt	0.78	0.83	0.87	0.87	8.51	8.21	8.05	8.05	6.65	6.82	7.00	7.00	0.00	0.00	0.18	2.61
Philippines	2.66	2.52	2.65	2.65	2.58	2.47	2.57	2.57	6.85	6.23	6.80	6.80	0.00	0.00	0.57	9.13
Vietnam	1.09	1.20	1.20	1.20	4.08	4.40	4.58	4.58	4.43	5.28	5.50	5.50	0.00	0.00	0.22	4.17
Thailand	1.07	1.00	0.97	0.97	4.21	4.10	4.02	4.02	4.50	4.10	3.90	3.90	0.00	0.00	-0.20	-4.88
Russia	1.65	1.10	1.15	1.15	4.00	3.59	3.04	3.04	6.60	3.95	3.50	3.50	0.00	0.00	-0.45	-11.39
Sub-Saharan Africa																
South Africa	2.90	3.25	3.00	3.00	4.34	4.31	4.17	4.17	12.57	14.00	12.50	12.50	0.00	0.00	-1.50	-10.71
Nigeria	4.70	4.90	4.90	4.90	1.70	1.79	1.78	1.78	7.97	8.76	8.70	8.70	0.00	0.00	-0.06	-0.67
Ethiopia	1.98	2.00	2.00	2.00	2.22	1.95	2.20	2.20	4.40	3.90	4.40	4.40	0.00	0.00	0.50	12.82
Zimbabwe	1.30	1.10	1.30	1.30	0.40	0.59	0.58	0.58	0.53	0.65	0.75	0.75	0.00	0.00	0.10	15.38
Turkey	0.52	0.50	0.49	0.49	7.98	8.00	8.16	8.16	4.15	4.00	4.00	4.00	0.00	0.00	0.00	0.00
Others	28.92	29.19	29.50	29.50	1.97	2.01	2.04	2.04	57.06	58.68	60.19	60.14	-0.05	-0.08	1.47	2.50

World and Selected Countries and Regions

Table 05 Barley Area, Yield, and Production

Country / Region	Area (Million hectares)				Yield (Metric tons per hectare)				Production (Million metric tons)				Change in Production			
	Prel.		2010/11 Proj.		Prel.		2010/11 Proj.		Prel.		2010/11 Proj.		From last month		From last year	
	2008/09	2009/10	Aug	Sep	2008/09	2009/10	Aug	Sep	2008/09	2009/10	Aug	Sep	MMT	Percent	MMT	Percent
World	55.90	55.41	51.88	51.31	2.78	2.70	2.47	2.45	155.34	149.81	127.95	125.95	-2.01	-1.57	-23.86	-15.93
United States	1.53	1.26	1.03	1.03	3.42	3.93	3.89	3.89	5.23	4.95	4.01	4.01	0.00	0.00	-0.94	-19.03
Total Foreign	54.37	54.15	50.85	50.28	2.76	2.68	2.44	2.43	150.11	144.86	123.95	121.94	-2.01	-1.62	-22.92	-15.82
Russia	9.60	9.05	7.50	7.20	2.41	1.98	1.33	1.25	23.10	17.90	10.00	9.00	-1.00	-10.00	-8.90	-49.72
EU-27	14.51	13.88	12.74	12.57	4.52	4.45	4.30	4.31	65.51	61.73	54.83	54.22	-0.61	-1.11	-7.51	-12.17
Germany	1.96	1.80	1.69	1.62	6.10	6.56	6.27	6.32	11.97	11.80	10.58	10.20	-0.38	-3.59	-1.60	-13.56
France	1.80	1.88	1.66	1.66	6.77	6.84	6.20	6.23	12.17	12.88	10.30	10.35	0.05	0.49	-2.53	-19.64
Spain	3.49	3.05	2.95	2.95	3.23	2.43	2.95	2.95	11.27	7.40	8.70	8.70	0.00	0.00	1.30	17.57
United Kingdom	1.03	1.16	0.90	0.90	5.95	5.84	5.78	5.78	6.14	6.77	5.20	5.20	0.00	0.00	-1.57	-23.18
Denmark	0.72	0.59	0.60	0.60	4.69	5.77	5.21	5.04	3.36	3.42	3.10	3.00	-0.10	-3.23	-0.42	-12.31
Poland	1.21	1.16	1.10	1.10	3.00	3.44	3.18	3.18	3.62	3.98	3.50	3.50	0.00	0.00	-0.48	-12.15
Czech Republic	0.48	0.45	0.40	0.39	4.66	4.41	3.94	4.36	2.24	2.00	1.58	1.70	0.12	7.87	-0.30	-15.13
Finland	0.59	0.56	0.39	0.41	3.63	3.86	3.64	3.05	2.13	2.17	1.40	1.25	-0.15	-10.71	-0.92	-42.42
Sweden	0.40	0.36	0.32	0.32	4.19	4.65	4.69	4.69	1.67	1.68	1.50	1.50	0.00	0.00	-0.18	-10.55
Italy	0.33	0.31	0.29	0.29	3.74	3.42	3.52	3.52	1.24	1.05	1.02	1.02	0.00	0.00	-0.03	-2.76
Hungary	0.33	0.32	0.32	0.29	4.45	3.22	3.20	3.37	1.48	1.03	1.03	0.98	-0.05	-4.78	-0.06	-5.52
Austria	0.19	0.18	0.17	0.17	5.20	4.60	5.06	4.52	0.97	0.83	0.85	0.76	-0.09	-10.59	-0.07	-8.76
Ukraine	4.15	5.00	4.50	4.50	3.04	2.36	2.00	2.00	12.60	11.80	9.00	9.00	0.00	0.00	-2.80	-23.73
Canada	3.50	2.92	2.65	2.55	3.36	3.26	3.17	3.33	11.78	9.52	8.40	8.50	0.10	1.19	-1.02	-10.69
Australia	5.02	4.48	4.20	4.20	1.59	1.85	1.81	1.81	8.00	8.30	7.60	7.60	0.00	0.00	-0.70	-8.43
Turkey	3.40	3.40	3.35	3.35	1.68	1.91	1.76	1.76	5.70	6.50	5.90	5.90	0.00	0.00	-0.60	-9.23
China	0.79	0.72	0.80	0.80	3.56	3.50	3.88	3.88	2.82	2.50	3.10	3.10	0.00	0.00	0.60	24.00
Iran	1.30	1.40	1.60	1.60	1.54	1.86	1.94	1.94	2.00	2.60	3.10	3.10	0.00	0.00	0.50	19.23
Morocco	2.18	2.18	1.91	1.91	0.58	1.74	1.47	1.36	1.27	3.80	2.80	2.60	-0.20	-7.14	-1.20	-31.58
Kazakhstan	2.10	2.00	1.60	1.60	0.86	1.30	0.81	0.81	1.80	2.60	1.30	1.30	0.00	0.00	-1.30	-50.00
Ethiopia	0.95	0.98	0.98	0.98	1.56	1.61	1.44	1.44	1.48	1.57	1.40	1.40	0.00	0.00	-0.17	-10.77
Belarus	0.61	0.50	0.60	0.60	3.61	3.30	3.17	2.67	2.20	1.65	1.90	1.60	-0.30	-15.79	-0.05	-3.03
India	0.75	0.78	0.79	0.79	1.60	2.17	1.65	1.65	1.20	1.69	1.30	1.30	0.00	0.00	-0.39	-23.08
Argentina	0.63	0.50	0.55	0.55	3.33	2.70	3.40	3.40	2.11	1.36	1.87	1.87	0.00	0.00	0.51	37.91
Mexico	0.32	0.23	0.31	0.31	2.56	2.17	2.52	2.52	0.81	0.50	0.78	0.78	0.00	0.00	0.28	56.20
Iraq	0.50	0.50	1.25	1.25	0.86	0.90	0.92	0.92	0.43	0.45	1.15	1.15	0.00	0.00	0.70	155.56
Algeria	0.70	1.24	1.00	1.00	0.80	1.94	1.40	1.40	0.56	2.40	1.40	1.40	0.00	0.00	-1.00	-41.67
Others	3.36	4.40	4.52	4.52	2.00	1.82	1.80	1.80	6.73	8.00	8.12	8.12	0.00	0.00	0.12	1.51

World and Selected Countries and Regions

Table 06 Oats Area, Yield, and Production

Country / Region	Area (Million hectares)				Yield (Metric tons per hectare)				Production (Million metric tons)				Change in Production			
	Prel.		2010/11 Proj.		Prel.		2010/11 Proj.		Prel.		2010/11 Proj.		From last month		From last year	
	2008/09	2009/10	Aug	Sep	2008/09	2009/10	Aug	Sep	2008/09	2009/10	Aug	Sep	MMT	Percent	MMT	Percent
World	12.80	11.86	11.91	11.71	2.04	2.00	1.90	1.85	26.14	23.75	22.61	21.67	-0.94	-4.15	-2.08	-8.74
United States	0.57	0.56	0.53	0.53	2.28	2.42	2.38	2.38	1.29	1.35	1.27	1.27	0.00	0.00	-0.09	-6.29
Total Foreign	12.24	11.30	11.38	11.18	2.03	1.98	1.88	1.83	24.84	22.40	21.35	20.41	-0.94	-4.39	-1.99	-8.89
Russia	3.70	3.35	3.40	3.40	1.57	1.61	1.32	1.32	5.80	5.40	4.50	4.50	0.00	0.00	-0.90	-16.67
Canada	1.45	0.95	1.00	0.85	2.95	2.95	2.80	2.82	4.27	2.80	2.80	2.40	-0.40	-14.29	-0.40	-14.22
EU-27	2.99	2.89	2.79	2.75	3.00	2.92	2.93	2.82	8.98	8.43	8.18	7.74	-0.44	-5.35	-0.69	-8.13
Poland	0.55	0.53	0.53	0.53	2.29	2.70	2.41	2.41	1.26	1.42	1.27	1.27	0.00	0.00	-0.16	-10.92
Finland	0.36	0.32	0.30	0.28	3.42	3.46	3.56	2.95	1.21	1.12	1.05	0.81	-0.24	-22.86	-0.31	-27.35
Spain	0.51	0.55	0.54	0.54	2.35	1.64	1.94	1.94	1.19	0.91	1.04	1.04	0.00	0.00	0.14	15.23
Germany	0.18	0.16	0.15	0.14	4.43	5.02	5.20	4.29	0.79	0.82	0.79	0.60	-0.19	-23.57	-0.22	-26.74
Sweden	0.22	0.19	0.16	0.16	3.68	3.99	4.00	4.00	0.82	0.75	0.64	0.64	0.00	0.00	-0.11	-14.67
United Kingdom	0.14	0.13	0.13	0.13	5.81	5.78	5.77	5.80	0.78	0.76	0.75	0.73	-0.03	-3.33	-0.03	-4.23
France	0.10	0.12	0.11	0.10	4.72	4.90	4.36	4.55	0.47	0.57	0.48	0.46	-0.02	-3.16	-0.11	-19.72
Italy	0.15	0.13	0.13	0.13	2.41	2.35	2.35	2.35	0.36	0.32	0.32	0.32	0.00	0.00	0.00	0.00
Denmark	0.08	0.07	0.07	0.07	3.83	4.03	4.15	4.15	0.32	0.27	0.27	0.27	0.00	0.00	0.00	0.00
Romania	0.21	0.20	0.20	0.20	2.01	1.45	1.74	1.74	0.43	0.30	0.34	0.34	0.00	0.00	0.05	15.25
Czech Republic	0.05	0.05	0.06	0.05	3.18	3.30	3.27	3.08	0.16	0.17	0.18	0.16	-0.02	-11.11	-0.01	-3.03
Hungary	0.06	0.05	0.06	0.06	3.00	2.19	2.27	3.09	0.18	0.11	0.13	0.17	0.05	36.00	0.06	49.12
Austria	0.03	0.03	0.03	0.03	4.00	4.00	4.04	3.96	0.11	0.11	0.11	0.11	0.00	-1.83	-0.01	-4.46
Ireland	0.02	0.02	0.02	0.02	7.70	7.50	7.48	7.48	0.18	0.14	0.16	0.16	0.00	0.00	0.02	16.30
Lithuania	0.07	0.06	0.06	0.06	2.07	2.23	2.00	2.33	0.14	0.14	0.12	0.14	0.02	16.67	0.00	-2.10
Australia	0.87	0.92	0.92	0.92	1.33	1.37	1.37	1.37	1.16	1.26	1.26	1.26	0.00	0.00	0.00	0.00
Ukraine	0.45	0.42	0.40	0.40	2.11	1.74	1.50	1.50	0.95	0.73	0.60	0.60	0.00	0.00	-0.13	-17.81
China	0.50	0.50	0.50	0.50	1.20	1.20	1.20	1.20	0.60	0.60	0.60	0.60	0.00	0.00	0.00	0.00
Belarus	0.18	0.25	0.25	0.25	3.33	3.20	3.20	2.80	0.60	0.80	0.80	0.70	-0.10	-12.50	-0.10	-12.50
Brazil	0.35	0.35	0.35	0.35	1.36	1.36	1.36	1.36	0.48	0.48	0.48	0.48	0.00	0.00	0.00	0.00
Argentina	0.21	0.14	0.20	0.20	1.37	1.31	1.75	1.75	0.29	0.18	0.35	0.35	0.00	0.00	0.17	92.31
Chile	0.10	0.07	0.09	0.09	3.41	5.07	4.44	4.44	0.34	0.35	0.40	0.40	0.00	0.00	0.06	15.94
Norway	0.08	0.07	0.07	0.07	4.26	3.36	3.36	3.36	0.33	0.25	0.25	0.25	0.00	0.00	0.00	0.00
Turkey	0.10	0.10	0.10	0.10	2.00	2.10	2.10	2.10	0.20	0.21	0.21	0.21	0.00	0.00	0.00	0.00
Kazakhstan	0.16	0.16	0.16	0.16	1.00	1.00	1.00	1.00	0.16	0.16	0.16	0.16	0.00	0.00	0.00	0.00
Serbia	0.07	0.07	0.07	0.07	1.85	1.85	1.85	1.85	0.12	0.12	0.12	0.12	0.00	0.00	0.00	0.00
Others	1.03	1.07	1.07	1.07	0.55	0.60	0.60	0.60	0.57	0.64	0.64	0.64	0.00	0.00	0.00	0.00

World and Selected Countries and Regions

Table 07 Rye Area, Yield, and Production

Country / Region	Area (Million hectares)				Yield (Metric tons per hectare)				Production (Million metric tons)				Change in Production			
	Prel.		2010/11 Proj.		Prel.		2010/11 Proj.		Prel.		2010/11 Proj.		From last month		From last year	
	2008/09	2009/10	Aug	Sep	2008/09	2009/10	Aug	Sep	2008/09	2009/10	Aug	Sep	MMT	Percent	MMT	Percent
World	6.53	6.47	5.68	5.61	2.65	2.67	2.42	2.27	17.31	17.29	13.75	12.76	-0.99	-7.21	-4.54	-26.24
United States	0.11	0.10	0.10	0.10	1.86	1.75	1.70	1.70	0.20	0.18	0.17	0.17	0.00	0.00	-0.01	-3.37
Total Foreign	6.42	6.37	5.57	5.51	2.67	2.69	2.44	2.28	17.11	17.12	13.57	12.58	-0.99	-7.30	-4.53	-26.48
EU-27	2.75	2.70	2.64	2.56	3.36	3.48	3.22	2.99	9.24	9.38	8.49	7.66	-0.83	-9.79	-1.72	-18.35
Poland	1.40	1.40	1.38	1.38	2.47	2.66	2.33	2.33	3.45	3.71	3.20	3.20	0.00	0.00	-0.51	-13.82
Germany	0.74	0.66	0.64	0.58	5.08	5.70	5.23	4.48	3.74	3.76	3.35	2.60	-0.75	-22.39	-1.16	-30.85
Spain	0.11	0.13	0.13	0.13	2.55	1.39	1.88	1.77	0.28	0.18	0.25	0.23	-0.02	-6.12	0.05	27.07
Lithuania	0.07	0.08	0.08	0.08	2.77	2.54	2.75	2.63	0.21	0.21	0.22	0.21	-0.01	-4.55	0.00	0.96
Latvia	0.06	0.06	0.06	0.06	3.31	2.75	3.00	3.00	0.20	0.16	0.17	0.17	0.00	0.00	0.00	1.85
France	0.03	0.03	0.03	0.03	4.73	5.20	5.38	5.38	0.12	0.13	0.14	0.14	0.00	0.00	0.01	7.69
Denmark	0.03	0.04	0.05	0.05	5.10	5.57	5.44	5.44	0.15	0.25	0.25	0.25	0.00	0.00	0.00	0.00
Czech Republic	0.04	0.04	0.03	0.03	4.88	4.68	4.22	4.67	0.21	0.18	0.14	0.14	0.01	3.70	-0.04	-21.35
Austria	0.05	0.05	0.05	0.05	4.13	3.80	4.02	3.80	0.22	0.19	0.19	0.18	-0.01	-5.41	-0.01	-5.91
Sweden	0.03	0.04	0.03	0.03	6.04	5.92	6.00	5.60	0.17	0.22	0.15	0.14	-0.01	-6.67	-0.08	-36.07
Hungary	0.04	0.04	0.04	0.04	2.59	1.80	2.70	2.22	0.11	0.07	0.10	0.08	-0.02	-18.00	0.01	10.81
Slovakia	0.03	0.02	0.02	0.02	3.08	2.85	2.27	2.18	0.08	0.06	0.05	0.04	-0.01	-26.00	-0.02	-35.09
Finland	0.02	0.02	0.04	0.03	2.54	2.63	2.43	2.80	0.06	0.04	0.09	0.07	-0.02	-17.65	0.03	66.67
United Kingdom	0.01	0.01	0.01	0.01	6.40	5.56	6.00	6.00	0.03	0.05	0.03	0.04	0.01	40.00	-0.01	-16.00
Romania	0.01	0.02	0.02	0.02	2.69	2.06	2.50	2.19	0.04	0.03	0.04	0.04	-0.01	-12.50	0.00	6.06
Greece	0.02	0.02	0.02	0.02	1.83	1.83	1.83	1.83	0.03	0.03	0.03	0.03	0.00	0.00	0.00	0.00
Portugal	0.02	0.02	0.02	0.02	1.10	0.89	1.00	1.00	0.02	0.02	0.02	0.02	0.00	0.00	0.00	11.76
Russia	2.20	2.15	1.70	1.70	2.05	2.00	1.47	1.47	4.50	4.30	2.50	2.50	0.00	0.00	-1.80	-41.86
Belarus	0.54	0.60	0.52	0.52	2.78	2.83	2.69	2.31	1.50	1.70	1.40	1.20	-0.20	-14.29	-0.50	-29.41
Ukraine	0.45	0.46	0.30	0.30	2.33	2.07	1.67	1.67	1.05	0.95	0.50	0.50	0.00	0.00	-0.45	-47.37
Canada	0.13	0.12	0.08	0.09	2.39	2.43	2.38	2.53	0.32	0.28	0.19	0.23	0.04	21.05	-0.05	-17.86
Turkey	0.13	0.13	0.13	0.13	1.92	2.08	2.08	2.08	0.25	0.27	0.27	0.27	0.00	0.00	0.00	0.00
Argentina	0.05	0.05	0.04	0.04	1.15	1.15	1.29	1.29	0.06	0.06	0.05	0.05	0.00	0.00	-0.01	-18.18
Kazakhstan	0.07	0.07	0.07	0.07	0.71	0.71	0.71	0.71	0.05	0.05	0.05	0.05	0.00	0.00	0.00	0.00
Australia	0.04	0.04	0.04	0.04	0.57	0.57	0.57	0.57	0.02	0.02	0.02	0.02	0.00	0.00	0.00	0.00
Switzerland	0.00	0.00	0.00	0.00	6.67	6.67	6.67	6.67	0.02	0.02	0.02	0.02	0.00	0.00	0.00	0.00
Others	0.06	0.06	0.06	0.06	1.69	1.38	1.38	1.38	0.11	0.09	0.09	0.09	0.00	0.00	0.00	0.00

World and Selected Countries and Regions

Table 08 Sorghum Area, Yield, and Production

Country / Region	Area (Million hectares)				Yield (Metric tons per hectare)				Production (Million metric tons)				Change in Production			
	Prel.		2010/11 Proj.		Prel.		2010/11 Proj.		Prel.		2010/11 Proj.		From last month		From last year	
	2008/09	2009/10	Aug	Sep	2008/09	2009/10	Aug	Sep	2008/09	2009/10	Aug	Sep	MMT	Percent	MMT	Percent
World	42.02	40.07	41.13	41.13	1.54	1.49	1.56	1.56	64.72	59.50	64.26	64.07	-0.19	-0.29	4.57	7.68
United States	2.94	2.23	2.10	2.10	4.08	4.35	4.65	4.56	12.00	9.73	9.74	9.56	-0.18	-1.82	-0.17	-1.70
Total Foreign	39.08	37.83	39.04	39.04	1.35	1.32	1.40	1.40	52.72	49.78	54.52	54.51	-0.01	-0.02	4.73	9.51
Sub-Saharan Africa																
Nigeria	7.40	7.50	7.60	7.60	1.49	1.53	1.54	1.54	11.00	11.50	11.70	11.70	0.00	0.00	0.20	1.74
Sudan	6.40	6.00	6.20	6.20	0.66	0.44	0.65	0.65	4.19	2.63	4.00	4.00	0.00	0.00	1.37	52.09
Ethiopia	1.55	1.55	1.55	1.55	1.69	1.34	1.68	1.68	2.62	2.08	2.60	2.60	0.00	0.00	0.52	24.76
Burkina	1.62	1.62	1.62	1.62	1.16	1.04	1.11	1.11	1.88	1.68	1.80	1.80	0.00	0.00	0.12	6.89
Tanzania	0.90	0.90	0.90	0.90	0.78	0.69	0.94	0.94	0.70	0.62	0.85	0.85	0.00	0.00	0.23	37.10
Niger	1.50	1.50	1.50	1.50	0.81	0.49	0.60	0.60	1.21	0.74	0.90	0.90	0.00	0.00	0.16	21.79
Uganda	0.31	0.31	0.31	0.31	1.48	1.48	1.58	1.58	0.46	0.46	0.49	0.49	0.00	0.00	0.03	6.52
Mozambique	0.50	0.50	0.45	0.45	0.76	0.76	0.78	0.78	0.38	0.38	0.35	0.35	0.00	0.00	-0.03	-7.41
Ghana	0.34	0.34	0.34	0.34	0.81	0.81	0.81	0.81	0.28	0.28	0.28	0.28	0.00	0.00	0.00	0.00
South Africa	0.09	0.09	0.09	0.09	3.26	2.91	2.56	2.56	0.28	0.25	0.23	0.23	0.00	0.00	-0.02	-9.09
South Asia																
India	7.70	7.00	7.50	7.50	0.95	1.00	1.00	1.00	7.31	6.98	7.50	7.50	0.00	0.00	0.52	7.45
Pakistan	0.24	0.24	0.24	0.24	0.60	0.60	0.60	0.60	0.15	0.15	0.15	0.15	0.00	0.00	0.00	0.00
South America																
Argentina	0.45	0.70	0.80	0.80	3.69	5.50	4.75	4.75	1.66	3.85	3.80	3.80	0.00	0.00	-0.05	-1.30
Brazil	0.85	0.78	0.85	0.85	2.26	2.34	2.35	2.35	1.91	1.83	2.00	2.00	0.00	0.00	0.18	9.59
Mexico	1.89	1.64	1.85	1.85	3.74	3.58	3.84	3.84	7.07	5.85	7.10	7.10	0.00	0.00	1.25	21.37
China	0.49	0.45	0.43	0.43	3.75	3.67	3.95	3.95	1.84	1.65	1.70	1.70	0.00	0.00	0.05	3.03
Australia	0.77	0.55	0.60	0.60	3.51	2.94	2.83	2.83	2.69	1.60	1.70	1.70	0.00	0.00	0.10	6.25
Egypt	0.16	0.16	0.16	0.16	5.63	5.63	5.63	5.63	0.90	0.90	0.90	0.90	0.00	0.00	0.00	0.00
EU-27	0.10	0.12	0.12	0.12	5.33	5.17	5.45	5.30	0.52	0.62	0.63	0.62	-0.01	-1.90	0.01	0.81
France	0.04	0.06	0.05	0.05	6.24	5.34	6.04	5.66	0.23	0.31	0.32	0.30	-0.02	-6.25	-0.01	-3.23
Italy	0.04	0.04	0.04	0.04	5.77	6.08	6.25	6.25	0.23	0.24	0.25	0.25	0.00	0.00	0.01	2.88
Others	5.84	5.90	5.93	5.93	0.98	0.97	0.99	0.99	5.69	5.74	5.85	5.85	0.00	0.00	0.11	1.95

World and Selected Countries and Regions

Table 09 Rice Area, Yield, and Production
World and Selected Countries and Regions

Country / Region	Area (Million hectares)				Yield (Metric tons per hectare)				Production (Million metric tons)				Change in Production			
	Prel.		2010/11 Proj.		Prel.		2010/11 Proj.		Prel.		2010/11 Proj.		From last month		From last year	
	2008/09	2009/10	Aug	Sep	2008/09	2009/10	Aug	Sep	2008/09	2009/10	Aug	Sep	MMT	Percent	MMT	Percent
World	157.83	155.15	160.13	159.62	4.25	4.25	4.29	4.26	448.23	441.15	459.17	454.60	-4.57	-0.99	13.45	3.05
United States	1.20	1.26	1.41	1.47	7.68	7.94	7.89	7.90	6.40	6.92	7.68	7.98	0.30	3.84	1.06	15.30
Total Foreign	156.63	153.89	158.71	158.15	4.22	4.22	4.26	4.23	441.83	434.24	451.49	446.63	-4.86	-1.08	12.39	2.85
East Asia																
China	29.24	29.68	29.80	29.72	6.56	6.59	6.59	6.54	134.33	137.00	137.50	136.00	-1.50	-1.09	-1.00	-0.73
Japan	1.63	1.62	1.62	1.62	6.78	6.52	6.66	6.66	8.03	7.71	7.85	7.85	0.00	0.00	0.14	1.80
Korea, South	0.94	0.92	0.90	0.90	6.99	7.19	6.91	7.07	4.84	4.92	4.60	4.71	0.11	2.39	-0.21	-4.19
Korea, North	0.59	0.59	0.59	0.58	4.89	5.02	5.05	4.96	1.86	1.91	1.92	1.87	-0.05	-2.60	-0.04	-2.09
South Asia																
India	45.40	41.00	45.00	45.00	3.28	3.26	3.30	3.30	99.18	89.13	99.00	99.00	0.00	0.00	9.87	11.07
Bangladesh	11.10	11.60	11.80	11.80	4.19	4.01	4.11	4.11	31.00	31.00	32.30	32.30	0.00	0.00	1.30	4.19
Pakistan	2.91	2.80	2.80	2.40	3.55	3.64	3.48	3.31	6.90	6.80	6.50	5.30	-1.20	-18.46	-1.50	-22.06
Southeast Asia																
Indonesia	12.17	12.10	12.20	12.10	4.88	4.75	5.08	4.87	38.30	37.10	40.00	38.00	-2.00	-5.00	0.90	2.43
Vietnam	7.33	7.35	7.35	7.35	5.30	5.31	5.39	5.39	24.39	24.40	24.75	24.75	0.00	0.00	0.35	1.44
Thailand	10.80	10.94	11.00	11.03	2.78	2.81	2.84	2.80	19.85	20.26	20.60	20.40	-0.20	-0.97	0.14	0.69
Burma	6.70	7.00	7.10	7.10	2.61	2.61	2.67	2.67	10.15	10.60	11.00	11.00	0.00	0.00	0.40	3.80
Philippines	4.53	4.41	4.45	4.45	3.77	3.52	3.85	3.85	10.76	9.77	10.80	10.80	0.00	0.00	1.03	10.52
Cambodia	2.61	2.68	2.75	2.75	2.75	2.84	2.77	2.77	4.52	4.78	4.80	4.80	0.00	0.00	0.02	0.42
Laos	0.83	0.84	0.86	0.86	3.54	3.61	3.68	3.68	1.76	1.82	1.90	1.90	0.00	0.00	0.08	4.34
Malaysia	0.66	0.67	0.67	0.67	3.58	3.68	3.70	3.70	1.54	1.59	1.60	1.60	0.00	0.00	0.01	0.63
South America																
Brazil	2.91	2.76	2.85	2.85	4.33	4.07	4.33	4.33	8.57	7.64	8.40	8.40	0.00	0.00	0.76	9.93
Peru	0.38	0.40	0.39	0.39	7.35	7.40	7.44	7.44	1.93	2.06	1.98	1.98	0.00	0.00	-0.09	-4.17
Sub-Saharan Africa																
Nigeria	2.30	2.40	2.45	2.45	2.32	2.36	2.45	2.45	3.20	3.40	3.60	3.60	0.00	0.00	0.20	5.88
Madagascar	1.36	1.38	1.38	1.38	2.88	3.05	3.05	3.05	2.51	2.69	2.69	2.69	0.00	0.00	0.00	0.00
EU-27	0.41	0.46	0.47	0.47	6.16	6.81	6.73	6.73	1.62	1.98	2.01	2.01	0.00	0.00	0.03	1.31
Italy	0.22	0.24	0.24	0.24	5.99	6.65	6.66	6.66	0.82	0.96	0.98	0.98	0.00	0.00	0.01	1.35
Spain	0.10	0.12	0.13	0.13	6.63	7.55	7.31	7.31	0.45	0.63	0.65	0.65	0.00	0.00	0.02	2.54
Egypt	0.67	0.67	0.60	0.60	10.08	9.87	10.00	10.00	4.40	4.30	3.90	3.90	0.00	0.00	-0.40	-9.30
Iran	0.58	0.63	0.63	0.63	3.95	4.85	4.93	4.93	1.50	2.00	2.05	2.05	0.00	0.00	0.05	2.50
Others	10.59	11.01	11.08	11.07	3.01	2.98	3.01	3.01	20.70	21.37	21.74	21.72	-0.02	-0.10	0.35	1.62

Yield is on a rough basis, before the milling process
Production is on a milled basis, after the milling process

Table 10 Total Oilseed Area, Yield, and Production

World and Selected Countries and Regions

Country / Region	Area (Million hectares)				Yield (Metric tons per hectare)				Production (Million metric tons)				Change in Production			
	Prel.		2010/11 Proj.		Prel.		2010/11 Proj.		Prel.		2010/11 Proj.		From last month		From last year	
	2008/09	2009/10	Aug	Sep	2008/09	2009/10	Aug	Sep	2008/09	2009/10	Aug	Sep	MMT	Percent	MMT	Percent
World Total	--	--	--	--	--	--	--	--	396.44	440.38	439.74	440.62	0.88	0.20	0.25	0.06
Total Foreign	--	--	--	--	--	--	--	--	307.24	341.48	336.40	335.82	-0.58	-0.17	-5.66	-1.66
Oilseed, Copra	--	--	--	--	--	--	--	--	5.88	5.88	5.96	5.96	0.00	0.00	0.08	1.36
Oilseed, Palm Kernel	--	--	--	--	--	--	--	--	11.81	12.14	13.29	12.85	-0.44	-3.30	0.72	5.90
Major Oilseeds	202.28	204.73	210.21	210.58	1.87	2.06	2.00	2.00	378.75	422.36	420.49	421.81	1.32	0.31	-0.55	-0.13
United States	35.27	35.51	37.79	37.85	2.53	2.78	2.73	2.77	89.20	98.90	103.34	104.81	1.46	1.42	5.91	5.97
Foreign Oilseeds	167.02	169.22	172.42	172.73	1.73	1.91	1.84	1.84	289.55	323.46	317.15	317.01	-0.14	-0.04	-6.46	-2.00
South America	45.96	50.22	50.47	50.47	2.25	2.80	2.64	2.64	103.61	140.78	133.06	133.06	0.00	0.00	-7.72	-5.49
Brazil	22.73	24.50	24.68	24.68	2.65	2.92	2.75	2.75	60.25	71.43	67.97	67.97	0.00	0.00	-3.47	-4.85
Argentina	18.39	20.74	20.68	20.68	1.93	2.79	2.64	2.64	35.51	57.94	54.52	54.52	0.00	0.00	-3.42	-5.90
Paraguay	2.82	2.85	2.98	2.98	1.55	2.60	2.27	2.27	4.37	7.40	6.77	6.77	0.00	0.00	-0.63	-8.52
Bolivia	1.19	1.14	1.10	1.10	1.72	1.74	1.76	1.76	2.05	1.98	1.94	1.94	0.00	0.00	-0.04	-2.03
China	26.98	26.43	26.33	26.33	2.15	2.17	2.16	2.14	58.12	57.27	56.81	56.22	-0.59	-1.04	-1.05	-1.83
South Asia	37.55	37.16	37.95	37.90	1.00	0.97	1.03	1.03	37.70	36.12	39.27	39.17	-0.10	-0.25	3.05	8.44
India	33.50	33.01	33.75	33.75	0.97	0.93	1.00	1.00	32.65	30.67	33.90	33.90	0.00	0.00	3.23	10.53
Pakistan	3.73	3.83	3.88	3.83	1.29	1.36	1.32	1.31	4.80	5.19	5.11	5.01	-0.10	-1.96	-0.18	-3.47
EU-27	10.48	11.02	11.36	11.26	2.61	2.69	2.50	2.51	27.33	29.70	28.37	28.27	-0.10	-0.35	-1.43	-4.81
France	2.09	2.25	2.22	2.21	3.05	3.30	2.93	2.93	6.38	7.41	6.51	6.48	-0.03	-0.38	-0.93	-12.60
Germany	1.40	1.50	1.53	1.51	3.73	4.25	3.70	3.74	5.20	6.36	5.65	5.65	0.00	0.00	-0.71	-11.22
Poland	0.78	0.82	0.81	0.79	2.72	2.95	2.56	2.56	2.11	2.41	2.06	2.01	-0.05	-2.43	-0.40	-16.62
Romania	1.25	1.26	1.44	1.38	1.61	1.48	1.52	1.49	2.01	1.87	2.19	2.06	-0.13	-5.94	0.20	10.46
Hungary	0.83	0.82	0.84	0.82	2.67	2.32	2.33	2.33	2.21	1.91	1.95	1.90	-0.05	-2.57	-0.01	-0.47
United Kingdom	0.60	0.58	0.65	0.64	3.30	3.36	3.27	3.28	1.97	1.95	2.13	2.10	-0.03	-1.18	0.15	7.69
Former Soviet Union - 12	17.53	16.60	18.08	17.92	1.34	1.29	1.19	1.18	23.56	21.39	21.58	21.18	-0.40	-1.85	-0.21	-0.99
Russia	7.34	6.95	7.73	7.70	1.21	1.16	1.08	1.06	8.85	8.03	8.35	8.15	-0.20	-2.40	0.12	1.44
Ukraine	6.45	5.98	6.20	6.07	1.66	1.58	1.47	1.47	10.70	9.45	9.10	8.90	-0.20	-2.20	-0.55	-5.82
Uzbekistan	1.42	1.30	1.30	1.30	1.27	1.17	1.48	1.48	1.80	1.53	1.93	1.93	0.00	0.00	0.40	26.23
Canada	7.76	7.56	7.32	7.82	2.07	2.04	1.94	1.93	16.09	15.44	14.22	15.07	0.85	5.98	-0.38	-2.43
Africa	12.42	12.33	12.53	12.53	0.87	0.86	0.87	0.87	10.81	10.57	10.86	10.86	0.00	0.00	0.29	2.72
Nigeria	2.08	2.08	2.08	2.08	1.05	1.05	1.05	1.05	2.18	2.19	2.19	2.19	0.00	0.00	0.00	0.00
Southeast Asia	3.70	3.73	3.74	3.74	1.34	1.34	1.34	1.34	4.94	4.98	4.99	4.99	0.00	0.00	0.01	0.20
Indonesia	1.38	1.38	1.38	1.38	1.50	1.49	1.49	1.49	2.06	2.06	2.06	2.06	0.00	0.00	0.00	0.00
Australia	1.98	1.68	2.03	2.15	1.24	1.52	1.55	1.56	2.45	2.56	3.15	3.35	0.20	6.35	0.80	31.14
Others	2.66	2.51	2.61	2.61	1.86	1.86	1.85	1.85	4.95	4.66	4.84	4.84	0.00	0.00	0.19	4.06

World Total and Total Foreign: (Major Oilseeds plus copra and palm kernel)

Major Oilseeds: (soybeans, sunflowerseeds, peanuts(inshell), cottonseed and rapeseed)

Table 11 Soybean Area, Yield, and Production

Country / Region	Area (Million hectares)				Yield (Metric tons per hectare)				Production (Million metric tons)				Change in Production			
	2008/09	Prel.	2010/11 Proj.		2008/09	Prel.	2010/11 Proj.		2008/09	Prel.	2010/11 Proj.		From last month		From last year	
		2009/10	Aug	Sep		2009/10	Aug	Sep		2009/10	Aug	Sep	MMT	Percent	MMT	Percent
World	96.40	101.96	101.97	101.92	2.20	2.55	2.49	2.50	211.96	259.89	253.69	254.89	1.20	0.47	-5.00	-1.92
United States	30.22	30.91	31.56	31.56	2.67	2.96	2.96	3.00	80.75	91.42	93.44	94.79	1.35	1.44	3.37	3.69
Total Foreign	66.18	71.06	70.41	70.36	1.98	2.37	2.28	2.28	131.22	168.48	160.25	160.10	-0.15	-0.09	-8.37	-4.97
South America																
Brazil	21.70	23.50	23.50	23.50	2.66	2.94	2.77	2.77	57.80	69.00	65.00	65.00	0.00	0.00	-4.00	-5.80
Argentina	16.00	18.60	18.00	18.00	2.00	2.93	2.78	2.78	32.00	54.50	50.00	50.00	0.00	0.00	-4.50	-8.26
Paraguay	2.55	2.68	2.75	2.75	1.57	2.69	2.36	2.36	4.00	7.20	6.50	6.50	0.00	0.00	-0.70	-9.72
Bolivia	0.89	0.90	0.85	0.85	1.80	1.85	1.86	1.86	1.60	1.67	1.58	1.58	0.00	0.00	-0.09	-5.11
Uruguay	0.65	0.85	0.90	0.90	1.80	2.12	1.80	1.80	1.17	1.79	1.62	1.62	0.00	0.00	-0.17	-9.70
East Asia																
China	9.13	8.80	8.60	8.60	1.70	1.67	1.70	1.67	15.54	14.70	14.60	14.40	-0.20	-1.37	-0.30	-2.04
Korea, South	0.08	0.08	0.08	0.08	1.76	1.71	1.81	1.81	0.13	0.13	0.15	0.15	0.00	0.00	0.02	11.54
Korea, North	0.14	0.14	0.14	0.14	1.15	1.08	1.19	1.19	0.16	0.15	0.16	0.16	0.00	0.00	0.01	6.67
Japan	0.15	0.15	0.15	0.15	1.78	1.57	1.55	1.55	0.26	0.23	0.23	0.23	0.00	0.00	0.00	-0.88
India	9.60	9.60	9.00	9.00	0.95	0.91	0.98	0.98	9.10	8.75	8.80	8.80	0.00	0.00	0.05	0.57
Canada	1.20	1.38	1.50	1.45	2.79	2.54	2.60	2.72	3.34	3.50	3.90	3.95	0.05	1.28	0.45	12.86
Former Soviet Union - 12																
Ukraine	0.55	0.63	0.90	0.90	1.45	1.68	1.67	1.67	0.80	1.05	1.50	1.50	0.00	0.00	0.45	42.86
Russia	0.71	0.79	1.00	1.00	1.05	1.19	1.15	1.15	0.74	0.94	1.15	1.15	0.00	0.00	0.21	22.08
Southeast Asia																
Indonesia	0.62	0.62	0.62	0.62	1.29	1.29	1.29	1.29	0.80	0.80	0.80	0.80	0.00	0.00	0.00	0.00
Vietnam	0.19	0.20	0.20	0.20	1.40	1.50	1.50	1.50	0.27	0.30	0.30	0.30	0.00	0.00	0.00	0.00
Thailand	0.12	0.11	0.12	0.12	1.50	1.55	1.50	1.50	0.18	0.17	0.18	0.18	0.00	0.00	0.01	5.88
Burma	0.16	0.16	0.16	0.16	1.22	1.19	1.19	1.19	0.19	0.19	0.19	0.19	0.00	0.00	0.00	0.00
EU-27	0.24	0.30	0.35	0.35	2.70	2.83	2.86	2.86	0.64	0.86	1.00	1.00	0.00	0.00	0.14	16.41
Italy	0.11	0.14	0.17	0.17	3.20	3.50	3.52	3.52	0.35	0.49	0.59	0.59	0.00	0.00	0.10	20.12
France	0.02	0.04	0.05	0.05	2.82	2.59	2.60	2.60	0.06	0.11	0.13	0.13	0.00	0.00	0.02	14.04
Sub-Saharan Africa																
South Africa	0.24	0.31	0.32	0.32	2.17	1.89	1.83	1.83	0.52	0.59	0.58	0.58	0.00	0.00	-0.01	-2.04
Nigeria	0.44	0.44	0.44	0.44	1.02	1.02	1.02	1.02	0.45	0.45	0.45	0.45	0.00	0.00	0.00	0.00
Uganda	0.15	0.15	0.15	0.15	1.10	1.10	1.10	1.10	0.17	0.17	0.17	0.17	0.00	0.00	0.00	0.00
Serbia	0.15	0.15	0.15	0.15	2.41	2.41	2.41	2.41	0.35	0.35	0.35	0.35	0.00	0.00	0.00	0.00
Mexico	0.08	0.07	0.07	0.07	2.01	1.50	1.50	1.50	0.15	0.11	0.11	0.11	0.00	0.00	0.00	0.00
Iran	0.12	0.12	0.12	0.12	1.82	2.17	2.26	2.26	0.21	0.25	0.26	0.26	0.00	0.00	0.01	4.00
Others	0.35	0.35	0.37	0.37	1.85	1.84	1.90	1.90	0.65	0.64	0.70	0.70	0.00	0.00	0.06	8.59

World and Selected Countries and Regions

Table 12 Cottonseed Area, Yield, and Production

Country / Region	Area (Million hectares)				Yield (Metric tons per hectare)				Production (Million metric tons)				Change in Production			
	Prel.		2010/11 Proj.		Prel.		2010/11 Proj.		Prel.		2010/11 Proj.		From last month		From last year	
	2008/09	2009/10	Aug	Sep	2008/09	2009/10	Aug	Sep	2008/09	2009/10	Aug	Sep	MMT	Percent	MMT	Percent
World	29.99	29.72	31.66	31.78	1.37	1.32	1.38	1.38	41.11	39.19	43.78	43.79	0.00	0.01	4.59	11.72
United States	3.06	3.05	4.30	4.36	1.27	1.24	1.32	1.33	3.90	3.76	5.69	5.78	0.09	1.65	2.02	53.59
Total Foreign	26.93	26.68	27.35	27.42	1.38	1.33	1.39	1.39	37.21	35.43	38.10	38.01	-0.09	-0.24	2.58	7.27
China	6.05	5.25	5.40	5.40	2.38	2.39	2.39	2.36	14.40	12.54	12.93	12.74	-0.19	-1.47	0.20	1.59
South Asia																
India	9.37	10.26	10.30	10.30	1.02	0.96	1.05	1.05	9.60	9.80	10.80	10.80	0.00	0.00	1.00	10.20
Pakistan	2.90	3.00	3.05	3.00	1.31	1.39	1.34	1.33	3.79	4.18	4.10	4.00	-0.10	-2.44	-0.18	-4.31
Former Soviet Union - 12																
Uzbekistan	1.42	1.30	1.30	1.30	1.27	1.17	1.48	1.48	1.80	1.53	1.93	1.93	0.00	0.00	0.40	26.23
Turkmenistan	0.60	0.55	0.58	0.58	0.88	0.89	0.89	0.89	0.53	0.49	0.51	0.51	0.00	0.00	0.02	4.08
Tajikistan	0.23	0.17	0.17	0.17	0.83	0.88	0.88	0.88	0.19	0.15	0.15	0.15	0.00	0.00	0.00	0.00
Kazakhstan	0.16	0.12	0.13	0.13	1.06	1.25	1.04	1.04	0.17	0.15	0.14	0.14	0.00	0.00	-0.02	-10.00
South America																
Brazil	0.84	0.84	1.00	1.00	2.42	2.51	2.61	2.61	2.04	2.10	2.61	2.61	0.00	0.00	0.51	24.10
Argentina	0.30	0.43	0.45	0.45	0.69	0.70	0.74	0.74	0.21	0.30	0.34	0.34	0.00	0.00	0.04	11.67
Middle East																
Turkey	0.34	0.28	0.33	0.33	2.06	2.14	1.95	1.95	0.70	0.60	0.65	0.65	0.00	0.00	0.05	7.50
Syria	0.18	0.17	0.17	0.17	2.73	2.75	2.75	2.75	0.48	0.45	0.45	0.45	0.00	0.00	0.00	0.00
Iran	0.10	0.09	0.10	0.10	0.97	0.99	1.00	1.00	0.10	0.09	0.10	0.10	0.00	0.00	0.01	12.36
Australia	0.16	0.20	0.26	0.38	2.44	2.50	2.69	2.40	0.40	0.50	0.70	0.90	0.20	28.57	0.40	80.00
EU-27	0.30	0.29	0.31	0.31	1.57	1.59	1.51	1.51	0.48	0.46	0.47	0.47	0.00	0.00	0.01	1.73
Greece	0.25	0.24	0.25	0.25	1.78	1.79	1.68	1.68	0.45	0.42	0.42	0.42	0.00	0.00	0.00	0.00
Spain	0.05	0.06	0.06	0.06	0.57	0.75	0.81	0.81	0.03	0.04	0.05	0.05	0.00	0.00	0.01	19.05
Sub-Saharan Africa																
Burkina	0.44	0.45	0.45	0.45	0.53	0.46	0.54	0.54	0.24	0.21	0.24	0.24	0.00	0.00	0.04	16.91
Mali	0.19	0.20	0.20	0.20	0.52	0.60	0.57	0.57	0.10	0.12	0.11	0.11	0.00	0.00	-0.01	-5.83
Cameroon	0.16	0.15	0.15	0.15	0.78	0.75	0.83	0.83	0.13	0.11	0.13	0.13	0.00	0.00	0.01	11.61
Sudan	0.09	0.04	0.09	0.09	1.08	0.83	0.96	0.96	0.10	0.03	0.08	0.08	0.00	0.00	0.05	148.48
Zimbabwe	0.37	0.38	0.38	0.38	0.43	0.45	0.46	0.46	0.16	0.17	0.18	0.18	0.00	0.00	0.00	2.34
Nigeria	0.40	0.40	0.40	0.40	0.47	0.49	0.49	0.49	0.18	0.19	0.19	0.19	0.00	0.00	0.00	0.00
Benin	0.21	0.18	0.18	0.18	0.65	0.64	0.64	0.64	0.13	0.12	0.12	0.12	0.00	0.00	0.00	0.00
Uganda	0.27	0.27	0.27	0.27	0.32	0.27	0.32	0.32	0.09	0.07	0.09	0.09	0.00	0.00	0.01	17.57
Egypt	0.13	0.12	0.12	0.12	1.17	1.20	1.20	1.20	0.15	0.14	0.14	0.14	0.00	0.00	0.00	0.00
Mexico	0.12	0.12	0.12	0.12	1.85	1.85	1.85	1.85	0.23	0.23	0.23	0.23	0.00	0.00	0.00	0.00
Burma	0.30	0.30	0.30	0.30	0.63	0.63	0.63	0.63	0.19	0.19	0.19	0.19	0.00	0.00	0.00	0.00
Others	1.30	1.13	1.16	1.16	0.49	0.45	0.47	0.47	0.64	0.50	0.54	0.54	0.00	0.00	0.04	7.75

World and Selected Countries and Regions

Table 13 Peanut Area, Yield, and Production

Country / Region	Area (Million hectares)				Yield (Metric tons per hectare)				Production (Million metric tons)				Change in Production			
	Prel.		2010/11 Proj.		Prel.		2010/11 Proj.		Prel.		2010/11 Proj.		From last month		From last year	
	2008/09	2009/10	Aug	Sep	2008/09	2009/10	Aug	Sep	2008/09	2009/10	Aug	Sep	MMT	Percent	MMT	Percent
World	21.12	20.06	21.23	21.23	1.63	1.64	1.63	1.62	34.47	32.97	34.67	34.49	-0.18	-0.52	1.53	4.63
United States	0.61	0.44	0.51	0.51	3.84	3.83	3.59	3.64	2.34	1.67	1.83	1.85	0.02	1.15	0.18	10.82
Total Foreign	20.51	19.62	20.72	20.72	1.57	1.60	1.58	1.58	32.13	31.30	32.84	32.64	-0.20	-0.61	1.34	4.29
China	4.25	4.26	4.30	4.30	3.36	3.45	3.44	3.40	14.29	14.70	14.80	14.60	-0.20	-1.35	-0.10	-0.68
South Asia																
India	6.40	5.30	6.35	6.35	0.98	0.92	1.01	1.01	6.25	4.90	6.40	6.40	0.00	0.00	1.50	30.61
Pakistan	0.11	0.11	0.11	0.11	0.90	0.90	0.90	0.90	0.10	0.10	0.10	0.10	0.00	0.00	0.00	0.00
Sub-Saharan Africa	7.36	7.61	7.61	7.61	0.92	0.91	0.91	0.91	6.75	6.92	6.91	6.91	0.00	0.00	-0.02	-0.22
Nigeria	1.25	1.25	1.25	1.25	1.24	1.24	1.24	1.24	1.55	1.55	1.55	1.55	0.00	0.00	0.00	0.00
Senegal	0.59	0.83	0.83	0.83	0.77	0.75	0.75	0.75	0.45	0.63	0.63	0.63	0.00	0.00	0.00	0.00
Chad	0.35	0.35	0.35	0.35	1.32	1.32	1.32	1.32	0.47	0.47	0.47	0.47	0.00	0.00	0.00	0.00
Ghana	0.47	0.47	0.47	0.47	0.94	0.94	0.94	0.94	0.44	0.44	0.44	0.44	0.00	0.00	0.00	0.00
Sudan	1.00	1.00	1.00	1.00	0.85	0.85	0.85	0.85	0.85	0.85	0.85	0.85	0.00	0.00	0.00	0.00
Congo (Kinshasa)	0.48	0.48	0.48	0.48	0.78	0.78	0.78	0.78	0.37	0.37	0.37	0.37	0.00	0.00	0.00	0.00
Burkina	0.35	0.35	0.35	0.35	1.01	1.01	1.01	1.01	0.35	0.35	0.35	0.35	0.00	0.00	0.00	0.00
Guinea	0.21	0.21	0.21	0.21	1.24	1.24	1.24	1.24	0.26	0.26	0.26	0.26	0.00	0.00	0.00	0.00
Cameroon	0.31	0.31	0.31	0.31	0.77	0.77	0.77	0.77	0.24	0.24	0.24	0.24	0.00	0.00	0.00	0.00
Mali	0.25	0.25	0.25	0.25	1.10	1.10	1.10	1.10	0.28	0.28	0.28	0.28	0.00	0.00	0.00	0.00
Malawi	0.22	0.22	0.22	0.22	1.20	1.20	1.20	1.20	0.27	0.27	0.27	0.27	0.00	0.00	0.00	0.00
Cote d'Ivoire	0.15	0.15	0.15	0.15	1.00	1.00	1.00	1.00	0.15	0.15	0.15	0.15	0.00	0.00	0.00	0.00
Uganda	0.21	0.21	0.21	0.21	0.70	0.70	0.70	0.70	0.15	0.15	0.15	0.15	0.00	0.00	0.00	0.00
Central African Republic	0.13	0.13	0.13	0.13	1.12	1.12	1.12	1.12	0.14	0.14	0.14	0.14	0.00	0.00	0.00	0.00
Benin	0.16	0.16	0.16	0.16	0.81	0.81	0.81	0.81	0.13	0.13	0.13	0.13	0.00	0.00	0.00	0.00
Mozambique	0.29	0.29	0.29	0.29	0.38	0.38	0.38	0.38	0.11	0.11	0.11	0.11	0.00	0.00	0.00	0.00
Niger	0.26	0.26	0.26	0.26	0.42	0.42	0.42	0.42	0.11	0.11	0.11	0.11	0.00	0.00	0.00	0.00
South Africa	0.06	0.06	0.06	0.06	2.33	2.28	2.02	2.02	0.13	0.13	0.12	0.12	0.00	0.00	-0.02	-11.54
Southeast Asia																
Indonesia	0.75	0.75	0.75	0.75	1.67	1.67	1.67	1.67	1.25	1.25	1.25	1.25	0.00	0.00	0.00	0.00
Burma	0.65	0.67	0.67	0.67	1.54	1.49	1.49	1.49	1.00	1.00	1.00	1.00	0.00	0.00	0.00	0.00
Vietnam	0.26	0.26	0.26	0.26	2.09	2.12	2.12	2.12	0.53	0.55	0.55	0.55	0.00	0.00	0.00	0.00
Thailand	0.07	0.07	0.07	0.07	1.77	1.77	1.77	1.77	0.12	0.12	0.12	0.12	0.00	0.00	0.00	0.00
South America																
Argentina	0.28	0.22	0.23	0.23	3.13	3.80	3.47	3.47	0.86	0.84	0.78	0.78	0.00	0.00	-0.06	-6.70
Brazil	0.12	0.10	0.10	0.10	2.62	2.47	2.50	2.50	0.30	0.24	0.25	0.25	0.00	0.00	0.02	6.38
Egypt	0.06	0.06	0.06	0.06	3.17	3.17	3.17	3.17	0.19	0.19	0.19	0.19	0.00	0.00	0.00	0.00
Mexico	0.05	0.05	0.05	0.05	1.56	1.56	1.56	1.56	0.07	0.07	0.07	0.07	0.00	0.00	0.00	0.00
Others	0.19	0.19	0.19	0.19	2.34	2.34	2.34	2.34	0.43	0.43	0.43	0.43	0.00	0.00	0.00	0.00

World and Selected Countries and Regions

Table 14 Sunflowerseed Area, Yield, and Production

Country / Region	Area (Million hectares)				Yield (Metric tons per hectare)				Production (Million metric tons)				Change in Production			
	Prel.		2010/11 Proj.		Prel.		2010/11 Proj.		Prel.		2010/11 Proj.		From last month		From last year	
	2008/09	2009/10	Aug	Sep	2008/09	2009/10	Aug	Sep	2008/09	2009/10	Aug	Sep	MMT	Percent	MMT	Percent
World	23.68	22.24	23.95	23.85	1.41	1.37	1.32	1.32	33.28	30.38	31.61	31.51	-0.10	-0.32	1.12	3.69
United States	0.97	0.79	0.81	0.81	1.60	1.74	1.63	1.63	1.55	1.38	1.33	1.33	0.00	0.00	-0.05	-3.70
Total Foreign	22.71	21.45	23.14	23.04	1.40	1.35	1.31	1.31	31.73	29.01	30.28	30.18	-0.10	-0.33	1.17	4.04
Former Soviet Union - 12																
Russia	6.00	5.60	6.10	6.10	1.23	1.15	1.07	1.07	7.35	6.43	6.50	6.50	0.00	0.00	0.08	1.17
Ukraine	4.50	4.35	4.30	4.30	1.56	1.49	1.40	1.40	7.00	6.50	6.00	6.00	0.00	0.00	-0.50	-7.69
Moldova	0.23	0.25	0.25	0.25	1.63	1.60	1.60	1.60	0.37	0.40	0.40	0.40	0.00	0.00	0.00	0.00
Kazakhstan	0.58	0.72	1.10	1.10	0.32	0.51	0.41	0.41	0.19	0.37	0.45	0.45	0.00	0.00	0.08	22.28
South America																
Argentina	1.81	1.49	2.00	2.00	1.35	1.55	1.70	1.70	2.44	2.30	3.40	3.40	0.00	0.00	1.10	47.83
Uruguay	0.06	0.02	0.02	0.02	0.93	1.53	1.60	1.60	0.05	0.02	0.03	0.03	0.00	0.00	0.01	39.13
Bolivia	0.30	0.24	0.25	0.25	1.48	1.32	1.42	1.42	0.45	0.31	0.36	0.36	0.00	0.00	0.05	14.52
China	0.96	0.92	0.93	0.93	1.86	1.77	1.81	1.81	1.79	1.63	1.68	1.68	0.00	0.00	0.05	3.07
EU-27	3.75	3.92	3.90	3.80	1.90	1.77	1.77	1.79	7.13	6.93	6.90	6.80	-0.10	-1.45	-0.13	-1.92
France	0.63	0.73	0.70	0.70	2.51	2.36	2.36	2.36	1.58	1.71	1.65	1.65	0.00	0.00	-0.06	-3.51
Hungary	0.55	0.53	0.53	0.53	2.71	2.35	2.35	2.35	1.49	1.26	1.23	1.23	0.00	0.00	-0.02	-1.67
Spain	0.73	0.85	0.80	0.78	1.20	1.02	1.00	1.02	0.88	0.87	0.80	0.80	0.00	0.00	-0.07	-8.26
Italy	0.11	0.12	0.14	0.12	2.29	1.60	2.22	2.08	0.26	0.20	0.30	0.25	-0.05	-16.67	0.05	25.63
Slovakia	0.08	0.08	0.08	0.09	2.56	2.40	2.50	2.39	0.19	0.20	0.21	0.21	0.00	0.00	0.01	3.96
South Asia																
India	1.53	1.40	1.50	1.50	0.65	0.59	0.60	0.60	1.00	0.82	0.90	0.90	0.00	0.00	0.08	9.76
Pakistan	0.45	0.45	0.45	0.45	1.52	1.52	1.52	1.52	0.69	0.69	0.69	0.69	0.00	0.00	0.00	0.00
Turkey	0.50	0.46	0.50	0.50	1.66	1.74	1.75	1.75	0.83	0.80	0.88	0.88	0.00	0.00	0.08	9.38
South Africa	0.64	0.40	0.55	0.55	1.26	1.25	1.27	1.27	0.80	0.50	0.70	0.70	0.00	0.00	0.20	40.00
Burma	0.55	0.55	0.55	0.55	0.67	0.67	0.67	0.67	0.37	0.37	0.37	0.37	0.00	0.00	0.00	0.00
Serbia	0.20	0.17	0.17	0.17	2.45	2.35	2.35	2.35	0.49	0.40	0.40	0.40	0.00	0.00	0.00	0.00
Canada	0.07	0.07	0.07	0.07	1.62	1.60	1.60	1.60	0.11	0.12	0.12	0.12	0.00	0.00	0.00	0.00
Australia	0.06	0.04	0.06	0.06	1.27	1.29	1.27	1.27	0.07	0.05	0.07	0.07	0.00	0.00	0.03	55.56
Others	0.53	0.41	0.44	0.44	1.13	0.93	1.02	1.02	0.59	0.38	0.45	0.45	0.00	0.00	0.06	16.71

World and Selected Countries and Regions

Table 15 Rapeseed Area, Yield, and Production

Country / Region	Area (Million hectares)				Yield (Metric tons per hectare)				Production (Million metric tons)				Change in Production			
	Prel.		2010/11 Proj.		Prel.		2010/11 Proj.		Prel.		2010/11 Proj.		From last month		From last year	
	2008/09	2009/10	Aug	Sep	2008/09	2009/10	Aug	Sep	2008/09	2009/10	Aug	Sep	MMT	Percent	MMT	Percent
World	31.09	30.75	31.41	31.80	1.86	1.95	1.81	1.80	57.92	59.93	56.74	57.14	0.40	0.70	-2.79	-4.65
United States	0.40	0.33	0.60	0.60	1.64	2.03	1.75	1.75	0.66	0.67	1.06	1.06	0.00	0.00	0.39	57.85
Total Foreign	30.69	30.42	30.80	31.19	1.87	1.95	1.81	1.80	57.27	59.26	55.68	56.08	0.40	0.72	-3.17	-5.36
EU-27	6.18	6.51	6.80	6.80	3.09	3.29	2.94	2.94	19.08	21.45	20.00	20.00	0.00	0.00	-1.45	-6.74
Germany	1.37	1.47	1.50	1.49	3.76	4.29	3.73	3.77	5.16	6.31	5.60	5.60	0.00	0.00	-0.71	-11.21
France	1.44	1.48	1.47	1.46	3.29	3.78	3.21	3.22	4.74	5.59	4.73	4.70	-0.03	-0.53	-0.89	-15.92
United Kingdom	0.60	0.58	0.65	0.64	3.30	3.36	3.27	3.28	1.97	1.95	2.13	2.10	-0.03	-1.18	0.15	7.69
Poland	0.77	0.81	0.80	0.78	2.73	2.96	2.56	2.56	2.11	2.40	2.05	2.00	-0.05	-2.44	-0.40	-16.67
Czech Republic	0.36	0.36	0.35	0.36	3.16	3.22	3.14	3.20	1.13	1.14	1.10	1.14	0.04	3.18	-0.01	-0.70
Denmark	0.17	0.16	0.15	0.15	3.66	3.90	3.53	3.53	0.63	0.64	0.53	0.53	0.00	0.00	-0.11	-16.54
Hungary	0.25	0.26	0.28	0.26	2.62	2.23	2.32	2.31	0.66	0.58	0.65	0.60	-0.05	-7.69	0.02	3.27
Romania	0.39	0.44	0.58	0.55	1.87	1.55	1.55	1.55	0.72	0.68	0.90	0.85	-0.05	-5.56	0.17	25.00
Slovakia	0.16	0.17	0.16	0.16	2.60	2.32	2.44	2.14	0.42	0.39	0.39	0.34	-0.05	-12.31	-0.05	-11.63
Sweden	0.09	0.10	0.11	0.11	2.85	2.99	2.95	2.95	0.26	0.30	0.31	0.31	0.00	0.00	0.01	3.68
Lithuania	0.16	0.19	0.20	0.20	2.04	2.17	2.10	2.10	0.33	0.42	0.42	0.42	0.00	0.00	0.00	0.96
Latvia	0.08	0.09	0.10	0.10	2.40	2.18	2.26	2.26	0.20	0.21	0.22	0.22	0.00	0.00	0.01	4.88
Austria	0.06	0.06	0.06	0.05	3.11	3.00	3.05	3.00	0.17	0.17	0.18	0.16	-0.02	-10.00	-0.01	-5.26
Finland	0.06	0.08	0.08	0.16	1.39	1.57	1.55	1.39	0.09	0.13	0.13	0.22	0.09	73.23	0.09	73.23
Estonia	0.08	0.08	0.08	0.08	1.42	1.67	1.42	1.46	0.11	0.13	0.11	0.12	0.01	8.11	-0.01	-7.69
China	6.59	7.20	7.10	7.10	1.84	1.90	1.80	1.80	12.10	13.70	12.80	12.80	0.00	0.00	-0.90	-6.57
South Asia																
India	6.60	6.45	6.60	6.60	1.02	0.99	1.06	1.06	6.70	6.40	7.00	7.00	0.00	0.00	0.60	9.38
Pakistan	0.27	0.27	0.27	0.27	0.83	0.85	0.85	0.85	0.23	0.23	0.23	0.23	0.00	0.00	0.00	0.00
Bangladesh	0.30	0.30	0.30	0.30	0.73	0.75	0.75	0.75	0.22	0.23	0.23	0.23	0.00	0.00	0.00	0.00
Canada	6.49	6.11	5.75	6.30	1.95	1.94	1.77	1.75	12.64	11.83	10.20	11.00	0.80	7.84	-0.83	-6.98
Australia	1.69	1.39	1.65	1.65	1.09	1.37	1.36	1.36	1.84	1.91	2.25	2.25	0.00	0.00	0.34	17.80
Former Soviet Union - 12																
Ukraine	1.40	1.00	1.00	0.87	2.07	1.90	1.60	1.61	2.90	1.90	1.60	1.40	-0.20	-12.50	-0.50	-26.32
Russia	0.63	0.56	0.63	0.60	1.20	1.20	1.11	0.83	0.75	0.67	0.70	0.50	-0.20	-28.57	-0.17	-25.04
Belarus	0.29	0.34	0.27	0.27	2.03	1.91	1.48	1.48	0.59	0.65	0.40	0.40	0.00	0.00	-0.25	-38.46
Paraguay	0.03	0.07	0.08	0.08	1.20	1.20	1.11	1.11	0.04	0.08	0.08	0.08	0.00	0.00	0.00	-1.19
Others	0.21	0.23	0.36	0.36	0.85	0.95	0.54	0.54	0.18	0.22	0.19	0.19	0.00	0.00	-0.03	-11.42

World and Selected Countries and Regions

Table 16 Copra, Palm Kernel, and Palm Oil Production

Country / Region	Production (Million metric tons)				Change in Production			
	2008/09	Prel.	2010/11 Proj.		From last month		From last year	
		2009/10	Aug	Sep	MMT	Percent	MMT	Percent
Oilseed, Copra								
Philippines	2.52	2.52	2.60	2.60	0.00	0.00	0.08	0.03
Indonesia	1.60	1.60	1.60	1.60	0.00	0.00	0.00	0.00
India	0.74	0.74	0.74	0.74	0.00	0.00	0.00	0.00
Vietnam	0.24	0.24	0.24	0.24	0.00	0.00	0.00	0.00
Mexico	0.23	0.23	0.23	0.23	0.00	0.00	0.00	0.00
Papua New Guinea	0.13	0.13	0.13	0.13	0.00	0.00	0.00	0.00
Thailand	0.07	0.07	0.07	0.07	0.00	0.00	0.00	0.00
Sri Lanka	0.07	0.07	0.07	0.07	0.00	0.00	0.00	0.00
Mozambique	0.05	0.05	0.05	0.05	0.00	0.00	0.00	0.00
Cote d'Ivoire	0.05	0.05	0.05	0.05	0.00	0.00	0.00	0.00
World	5.88	5.88	5.96	5.96	0.00	0.00	0.08	0.01
Oilseed, Palm Kernel								
Indonesia	5.47	5.60	6.50	6.14	-0.36	-0.06	0.54	0.10
Malaysia	4.44	4.65	4.83	4.83	0.00	0.00	0.17	0.04
Nigeria	0.67	0.67	0.67	0.67	0.00	0.00	0.00	0.00
Thailand	0.31	0.27	0.28	0.28	0.00	0.00	0.01	0.04
Colombia	0.17	0.18	0.20	0.17	-0.03	-0.15	-0.01	-0.06
Papua New Guinea	0.11	0.12	0.12	0.12	0.00	0.00	0.00	0.00
Cote d'Ivoire	0.08	0.08	0.08	0.08	0.00	0.00	0.00	0.00
Ecuador	0.07	0.07	0.12	0.07	-0.05	-0.42	0.00	0.00
Cameroon	0.07	0.07	0.07	0.07	0.00	0.00	0.00	0.00
Congo (Kinshasa)	0.06	0.06	0.06	0.06	0.00	0.00	0.00	0.00
World	11.81	12.14	13.29	12.85	-0.44	-0.03	0.71	0.06
Oil, Palm								
Indonesia	20.50	21.00	24.50	23.00	-1.50	-0.06	2.00	0.10
Malaysia	17.26	18.00	18.60	18.60	0.00	0.00	0.60	0.03
Thailand	1.54	1.35	1.50	1.50	0.00	0.00	0.16	0.12
Nigeria	0.85	0.85	0.85	0.85	0.00	0.00	0.00	0.00
Colombia	0.78	0.77	0.81	0.82	0.01	0.01	0.05	0.06
Papua New Guinea	0.40	0.44	0.44	0.44	0.00	0.00	0.00	0.00
Ecuador	0.42	0.43	0.47	0.46	-0.01	-0.02	0.03	0.07
Cote d'Ivoire	0.29	0.30	0.30	0.30	0.00	0.00	0.00	0.00
Honduras	0.25	0.25	0.25	0.25	0.00	0.00	0.00	0.00
Costa Rica	0.21	0.23	0.23	0.23	0.00	0.00	0.00	0.00
World	43.86	45.00	49.34	47.84	-1.50	-0.03	2.84	0.06

World and Selected Countries and Regions

Table 17 Cotton Area, Yield, and Production

Country / Region	Area (Million 1000 HA)				Yield (Kilograms per hectare)				Production (Million 480 lb. bales)				Change in Production						
	2008/09	Prel.		2010/11 Proj.		2008/09	Prel.		2010/11 Proj.		2008/09	Prel.		2010/11 Proj.		From last month		From last year	
		2009/10	Aug	Sep	2009/10		Aug	Sep	2009/10	Aug		Sep	MBales	Percent	MBales	Percent			
World	30.73	30.18	33.01	32.91	759	730	771	774	107.14	101.15	116.85	116.95	0.10	0.09	15.80	15.62			
United States	3.06	3.05	4.30	4.36	911	871	938	941	12.82	12.19	18.53	18.84	0.31	1.66	6.65	54.59			
Total Foreign	27.67	27.13	28.71	28.55	742	714	746	748	94.32	88.96	98.32	98.11	-0.21	-0.21	9.15	10.29			
China	6.05	5.25	5.40	5.40	1,321	1,327	1,331	1,310	36.70	32.00	33.00	32.50	-0.50	-1.52	0.50	1.56			
South Asia																			
India	9.41	10.26	10.70	10.70	523	492	529	529	22.60	23.20	26.00	26.00	0.00	0.00	2.80	12.07			
Pakistan	2.90	3.00	3.05	3.00	653	697	678	675	8.70	9.60	9.50	9.30	-0.20	-2.11	-0.30	-3.13			
Former Soviet Union - 12																			
Uzbekistan	1.42	1.30	1.30	1.30	705	653	804	804	4.60	3.90	4.80	4.80	0.00	0.00	0.90	23.08			
Turkmenistan	0.60	0.55	0.58	0.58	490	495	492	492	1.35	1.25	1.30	1.30	0.00	0.00	0.05	4.00			
Tajikistan	0.23	0.17	0.17	0.17	454	480	495	495	0.48	0.38	0.38	0.38	0.00	0.00	0.00	0.00			
Kazakhstan	0.16	0.12	0.13	0.13	565	635	586	586	0.42	0.35	0.35	0.35	0.00	0.00	0.00	0.00			
Sub-Saharan Africa																			
Burkina	0.44	0.42	0.48	0.48	421	363	413	413	0.85	0.70	0.90	0.90	0.00	0.00	0.20	28.57			
Mali	0.19	0.20	0.25	0.28	401	463	414	428	0.35	0.43	0.48	0.55	0.08	15.79	0.13	29.41			
Zimbabwe	0.37	0.38	0.40	0.40	244	286	286	286	0.42	0.50	0.53	0.53	0.00	0.00	0.03	5.00			
Benin	0.21	0.18	0.20	0.20	430	423	463	463	0.41	0.35	0.43	0.43	0.00	0.00	0.08	21.43			
Cote d'Ivoire	0.19	0.15	0.20	0.22	258	363	381	376	0.23	0.25	0.35	0.38	0.03	8.57	0.13	52.00			
Cameroon	0.16	0.15	0.16	0.16	340	327	374	374	0.25	0.23	0.28	0.28	0.00	0.00	0.05	22.22			
Nigeria	0.40	0.40	0.41	0.41	234	248	252	252	0.43	0.45	0.48	0.48	0.00	0.00	0.03	5.56			
Sudan	0.09	0.04	0.12	0.06	460	354	363	435	0.19	0.07	0.20	0.12	-0.08	-40.00	0.06	84.62			
South America																			
Brazil	0.84	0.84	1.00	1.00	1,415	1,393	1,524	1,524	5.48	5.35	7.00	7.00	0.00	0.00	1.65	30.84			
Argentina	0.30	0.43	0.45	0.45	435	420	435	435	0.60	0.83	0.90	0.90	0.00	0.00	0.07	8.43			
Paraguay	0.05	0.02	0.05	0.05	331	381	340	340	0.08	0.04	0.08	0.08	0.00	0.00	0.04	122.86			
Middle East																			
Turkey	0.34	0.28	0.35	0.35	1,236	1,361	1,452	1,452	1.93	1.75	2.30	2.30	0.00	0.00	0.55	31.43			
Syria	0.18	0.17	0.17	0.17	1,330	1,320	1,320	1,320	1.08	1.00	1.00	1.00	0.00	0.00	0.00	0.00			
Iran	0.10	0.09	0.10	0.10	708	726	762	762	0.33	0.30	0.35	0.35	0.00	0.00	0.05	16.67			
Australia	0.16	0.20	0.26	0.38	1,991	1,742	1,926	1,742	1.50	1.60	2.30	3.00	0.70	30.43	1.40	87.50			
EU-27	0.31	0.29	0.33	0.33	882	758	903	903	1.24	1.02	1.39	1.39	0.00	0.00	0.37	35.78			
Greece	0.25	0.24	0.27	0.27	1,002	834	968	968	1.15	0.90	1.20	1.20	0.00	0.00	0.30	33.33			
Spain	0.05	0.06	0.06	0.06	325	428	615	615	0.08	0.11	0.18	0.18	0.00	0.00	0.07	59.09			
Egypt	0.13	0.12	0.16	0.16	791	790	816	816	0.48	0.43	0.60	0.60	0.00	0.00	0.17	38.89			
Mexico	0.10	0.07	0.11	0.11	1,222	1,313	1,244	1,241	0.57	0.42	0.64	0.61	-0.03	-4.69	0.19	44.55			
Others	2.35	2.06	2.19	1.99	287	273	279	286	3.09	2.58	2.81	2.61	-0.20	-7.11	0.03	1.20			

World and Selected Countries and Regions

TABLE 18

The table below presents a 29-year record of the differences between the September projection and the final estimate. Using world wheat production as an example, changes between the September projection and the final estimate have averaged 9.5 million tons (1.7 percent) and ranged from -30.7 to 13.1 million tons. The September projection has been below the final 18 times and above the final 11 times.

RELIABILITY OF PRODUCTION PROJECTIONS

COMMODITY AND REGION	PROJECTION AND FINAL ESTIMATES, 1981/82 - 2008/09 1/					
	Difference		Lowest	Highest	Below	Above
	Average	Average	Difference		Final	Final
	Percent	---Million metric tons---		Number of years 2/		
WHEAT						
World	1.7	9.5	-30.7	13.1	18	11
U.S.	1.4	0.9	-1.4	2.5	12	17
Foreign	1.9	9.3	-30.9	12.0	19	10
COARSE GRAINS 3/						
World	1.8	15.7	-50.6	24.9	23	6
U.S.	3.4	8.3	-21.5	26.0	20	9
Foreign	2.0	12.3	-29.6	13.9	21	8
RICE (Milled)						
World	1.9	7.0	-24.1	3.4	24	5
U.S.	3.8	0.2	-0.5	0.5	16	12
Foreign	2.0	7.0	-24.4	3.6	24	5
SOYBEANS						
World	3.8	6.0	-16.0	27.4	18	11
U.S.	4.5	3.0	-8.3	5.1	17	12
Foreign	6.6	6.0	-12.9	29.1	15	14
	---Million 480-lb. bales---					
COTTON						
World	3.4	3.1	-12.6	9.5	18	11
U.S.	5.4	0.9	-2.3	2.4	16	12
Foreign	3.6	2.7	-11.2	9.8	18	11
UNITED STATES	-----Million bushels-----					
CORN	3.7	312	-846	885	20	9
SORGHUM	4.6	27	-69	81	13	15
BARLEY	3.8	12	-29	36	12	17
OATS	6.9	13	-19	44	5	23

1/ The final estimate for 1981/82-2008/09 is defined as the first November estimate following the marketing year.

2/ May not total 28 if projection was the same as the final.

3/ Includes corn, sorghum, barley, oats, rye, millet, and mixed grain.