



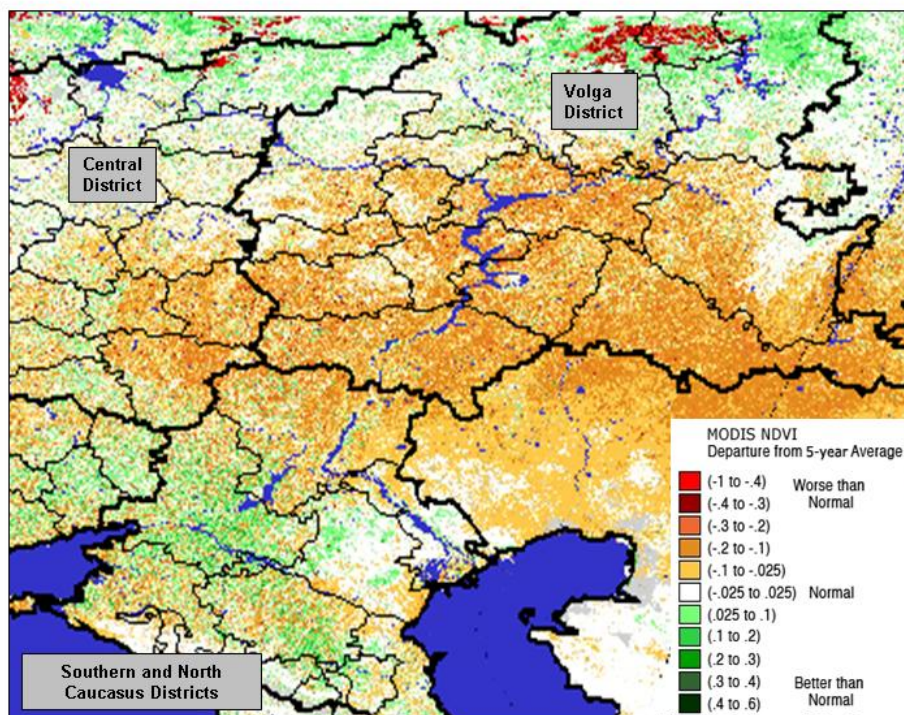
United States
Department of
Agriculture

Foreign
Agricultural
Service

Circular Series
WAP 07-10
July 2010

World Agricultural Production

Russian Volga District: Withering Drought Reduces Yield Prospects for Wheat



Vegetative indices (NDVI) derived from the MODIS satellite sensor indicate that crop conditions were significantly worse than average throughout the Volga District. The Volga District is one of Russia's key grain-production regions.

Russia Wheat: Severe Drought Reduces Production Prospects

The USDA forecasts Russia wheat production for 2010/11 at 53.0 million tons, down 4.5 million or 8 percent from last month and down 8.7 million or 14 percent from last year. Area is estimated at 26.8 million hectares, down 0.6 million from last month and down 1.9 million from last year. The decline in area is primarily due to higher estimated winterkill and lower reported spring wheat area. Yield is estimated at 1.98 tons per hectare, down 6 percent from last month and down 8 percent from last year. The reduction in estimated yield is attributed chiefly to withering drought in the Volga, Ural, and Siberian Districts, which together produce most of Russia's spring wheat.

Approved by the World Agricultural Outlook Board

Winter wheat accounts for slightly less than half of the total wheat area but almost two-thirds of the total production due to inherently higher yields. The sown area of winter wheat was about the same as last year, but winter losses were higher due to autumn dryness, January frost, and ice crusting. The Southern and North Caucasus Districts together typically produce about 60 percent of Russia's winter wheat, the Central District 25 percent, and the Volga District 15 percent. Yield prospects vary by region. The yields are better than last year in the Southern District but worse in the Central and Volga Districts. The Ministry of Agriculture estimates winterkill at 19 percent in the Central District (against 2 percent last year) and at 25 percent (compared to 8 percent last year) in the Volga District. Winter wheat likely escaped significant drought damage in the Southern District but suffered from persistent dryness in the Volga District and southeastern portion of the Central District.

The Ministry of Agriculture reports indicate that spring wheat was planted on 13.7 million hectares against 14.6 million last year. All of the major spring-wheat production districts (Siberia, Ural, and Volga) have been subject to severe and persistent drought. Throughout the spring-wheat zone, late-June MODIS satellite-sensor-derived vegetative indices show the lowest values since 2000 (i.e., the lowest on record). (*For more information, contact Mark Lindeman at 202-690-0143.*)

Kazakhstan Wheat: Withering Drought in Main Wheat Production Zone

Kazakhstan wheat production for 2010/11 is forecast at 14.0 million tons, down 3.0 million or 18 percent from both last month and last year. Area is estimated at 14.6 million hectares against 14.7 million last year, and yield is forecast at 0.96 tons per hectare, 10 percent below the 5-year average. Severe drought has sharply reduced crop-production prospects in Kazakhstan's main grain region. Precipitation for the current growing season is the lowest in the past 10 years. Late-June MODIS satellite-derived vegetative indices indicate the lowest values since 2000 (i.e., the lowest on record).

Spring wheat occupies 80 percent of the grain area in Kazakhstan, and about 75 percent of the spring wheat is grown in three territories (oblasts) in north-central Kazakhstan: Akmola, Kostanai, and North Kazakhstan. North Kazakhstan oblast typically accounts for about 25 to 30 percent of the country's wheat output, Akmola for 20 to 25 percent, and Kostanai for 25 to 30 percent. During the past five to ten years, agricultural technology in Kazakhstan has benefited from the growth of large agro-holding companies. These are umbrella companies that provide operating capital to individual enterprises under their management. Agricultural enterprises have benefited also from government-subsidized prices for fuel, seed, fertilizer, and chemicals. The State pays approximately 40 percent of the cost of these materials. The use of moisture-saving technology (minimum tillage) has increased from 5.0 million hectares in 2007 to 10.3 million hectares last year. Grain producers maintain that moisture-saving technology reduces yield loss in the event of drought and reduces the need for clean fallow in the crop rotation. (*For more information, contact Mark Lindeman at 202-690-0143.*)

EU Barley Area and Production Down 8 Percent

European Union (EU) barley area and production for 2010/11 are both forecast to drop by 8 percent from last season. The USDA lowered the EU's estimated barley crop by 2.4 million tons or 4 percent from last month, to 56.4 million tons. Area is estimated at 12.7 million hectares, down 0.4 million hectares from last month and down 1.1 million hectares from last year. This is the lowest area seeded to barley since the 1960s. The 2010/11 crop year is the first year that barley is being excluded from the EU intervention scheme, a system that guarantees farmers a set price for the purchase of grain. This new policy, combined with barley's lower market price, has largely resulted in the reductions for barley.

Yield is revised down from 4.47 tons per hectare last month to 4.42 tons per hectare this month. The latest estimates reflect aggregate changes to several EU countries. These changes are based on recent field reports and unfavorable weather, including dry conditions in Western Europe and a very wet spring in Central and Eastern Europe. The largest individual reduction was incurred by France where production was adjusted down 0.65 million tons to 10.6 million due to a very dry spring. In addition, low temperatures and dry conditions in Finland delayed or prevented spring plantings, resulting in 0.19 million fewer hectares and 0.6 million fewer tons than last month's estimate. Estimated barley production was also reduced by 0.32 million tons in Germany, by 0.2 million in Spain, by 0.15 million in Hungary, by 0.15 million in Italy, and by 0.12 million in the Czech Republic. *(For more information, contact Bryan Purcell at 202-690-0138.)*

Canada Wheat: Estimated Area Drops to the Lowest Level in 30 Years

The USDA estimates Canadian wheat area for 2010/11 at 7.7 million hectares, down 1.5 million hectares or 16 percent from last month, and down 1.8 million hectares or 19 percent from last year. The revision is attributed to high unseeded acreage caused by persistent rainfall and waterlogged conditions. Wet and cool weather throughout the planting season impacted the Western Canadian provinces. Manitoba and Saskatchewan, which account for 64 percent of total wheat production, received record rainfall since mid-May. Production is forecast to fall to 20.5 million tons, down 4.0 million or 16 percent from last month and down 6.0 million from last year. Yield is forecast at 2.66 tons per hectare, unchanged from last month, but down 5 percent from a year ago. *(For more information, contact Arnella Trent at 202-720-0881.)*

China: Bumper Wheat Crop Expected

China's 2010/11 wheat production is estimated at 114.5 million tons, up 2.5 million or 2 percent from last month but down slightly from last year's revised estimate of 115.0 million tons. Area is estimated at 24.3 million hectares, up 0.3 million from last month and up 0.1 million from last year's revised area. The estimated yield of 4.71 tons per hectare is down 1 percent from last year but 2 percent above the 5-year average.

The 2010/11 winter wheat crop (planted in October 2009) was hit by unusual weather during most of the growing season. A severe winter drought in southwest China contributed to significant yield losses in the region, particularly in Yunnan and Guizhou provinces, while unseasonably cold weather in November on the North China Plain and in northern Xinjiang sent

the newly-emerged crop into premature dormancy and weakened its resistance to freeze damage. Below-normal temperatures and heavy snowfall in the spring delayed the resumption of winter wheat growth by several weeks and hindered the planting of spring wheat in northeast and northwest China.



Winter wheat harvest, June 14, 2010 – Hebei

Yield prospects began to improve during May with the return of more seasonable weather. Warm and mostly dry conditions in June were nearly ideal for winter wheat maturation and harvest in the major wheat-growing provinces of central and northern China, and Chinese officials have reported better than expected yields despite the earlier weather problems. The launch of the winter-wheat harvest campaign on the North China Plain was delayed by 5 to 10 days due to the late development of the crop, but the warm and sunny weather in June allowed it to progress rapidly and conclude by the end of the month. The spring wheat crop (about

6 percent of total wheat output) is now in the filling stage and will be harvested in July/August. (For more information, contact Paulette Sandene at 202-690-0133).

Canada Rapeseed: Persistent Rainfall Results in High Unseeded Acreage

The USDA estimates 2010/11 Canadian rapeseed area at 5.75 million hectares, down 1.1 million hectares or 15 percent from last month, and down 0.4 million hectares or 6 percent from last year. The revision is due to high unseeded acreage caused by persistent rainfall and waterlogged conditions. Wet and cool weather throughout the planting season impacted the Western Canadian provinces of Manitoba and Saskatchewan. These provinces, which account for 73 percent of total rapeseed production, received record rainfall since mid-May. Production is forecast at 10.2 million metric tons, down 1.8 million or 15 percent from last month and down 1.6 million from last year. Yield is forecast at 1.77 tons per hectare, virtually unchanged from last month but down 8 percent from last year. (For more information, contact Arnella Trent at 202-720-0881.)

Uzbekistan Cotton: Favorable Early-Season Conditions Boost Cotton Prospects

The USDA estimates Uzbekistan cotton production for 2010/11 at 4.8 million bales, up 0.2 million from last month and up 0.8 million from last year. Last year's crop was impacted by excessive heat throughout the growing season that resulted in reduced yields. Area is estimated at 1.30 million hectares, unchanged from both last month and last year. Yield is forecast at 804 kilograms per hectare, 4 percent above the five-year-average. Heavy spring rainfall necessitated localized replanting this spring, chiefly in eastern Uzbekistan, but the overall level of replanting was relatively low. Temperatures were favorably warm during June, when the crop was advancing through the reproductive stage. Local observers report that current crop conditions are generally good.

According to a U.S. agricultural attaché report, it has become increasingly difficult over the last several years for producers to attain state production targets due to poor farming practices and the absence of appropriate incentives. The government still maintains tight control over all aspects of cotton production, including planted area, prices, inputs, procurement, and marketing. Furthermore, the ginning sector is in need of investment in order to modernize its mostly old gins.

Uzbek farmers are increasing the use of locally-developed, early-maturing cotton varieties. Each variety has unique characteristics for maturity, yield, and disease-resistance, and is sown in different regions depending on soil conditions. Except for one relatively new variety (Bukhara-8), most of the widely-used varieties were developed 10 to 15 years ago. BT cotton is not approved for use in Uzbekistan. *(For more information, contact Mark Lindeman at 202-690-0143.)*

Argentina: Improved Soybean Yields Boost 2009/10 Production

The USDA forecasts Argentine soybean production for 2009/10 at 54.5 million tons, up 1 percent from last month and up 22.5 million or 70 percent from 2008/09. This would be a 31 percent increase in production from the 5-year average of 41.3 million tons. Area is estimated to reach 18.6 million hectares, 1 percent below last month but up 16 percent from 2008/09 when drought cut harvested soybean area to 16 million hectares. Favorable growing conditions will boost yield for 2009/10 to 2.93 tons per hectare. Good growing conditions and timely rains in much of the core soy areas in Argentina helped yields during final maturation. The current 2009/10 yield estimate is 2 percent lower than the record yield of 2.99 tons per hectare recorded in 2006/07. *(For additional information, contact Dr. Denise McWilliams, South American Crop Assessment Analyst at 202-720-0107.)*

This report uses information from the Foreign Agricultural Service's (FAS) global network of agricultural attachés and counselors, official statistics of foreign governments and other foreign source materials, and the analysis of economic data and satellite imagery. Estimates of foreign area, yield, and production are from the International Production Assessment Division, FAS, and are reviewed by USDA's Inter-Agency Commodity Estimates Committee. Estimates of U.S. area, yield, and production are from USDA's National Agricultural Statistics Service. Numbers within the report may not add to totals because of rounding. This report reflects official USDA estimates released in the World Agricultural Supply and Demand Estimates (WASDE-467) July 9, 2010.

Printed copies are available from the National Technical Information Service. Download an order form at http://www.ntis.gov/products/specialty/usda/fas_a-g.asp, or call NTIS at 1-800-363-2068.

The FAS/OGA International Production Assessment Branch prepared this report. The next issue of World Agricultural Production will be released after 9:30 a.m. Eastern Time, August 12, 2010.

Conversion Table		
Metric tons to bushels		
Wheat, soybeans	=	MT * 36.7437
Corn, sorghum, rye	=	MT * 39.36825
Barley	=	MT * 45.929625
Oats	=	MT * 68.894438
Metric tons to 480-lb bales		
Cotton	=	MT * 4.592917
Metric tons to hundredweight		
Rice	=	MT * 22.04622
Area & weight		
1 hectare	=	2.471044 acres
1 kilogram	=	2.204622 pounds



For further information, contact:
U.S. Department of Agriculture
Foreign Agricultural Service
Office of Global Analysis
International Production Assessment Division
Ag Box 1051, Room 4630, South Building
Washington, DC 20250-1051
Telephone: (202) 720-1157 Fax: (202) 720-1158

GENERAL INFORMATION

Director	Derrick Williams III	202-690-0131	derrick.williams@fas.usda.gov
Deputy Director	Tom St. Clair	202-720-2974	tom.stclair@fas.usda.gov
Deputy Director/SIA Manager	Curt Reynolds, PhD	202-690-0134	curt.reynoldsc@fas.usda.gov
USDA Remote Sensing Advisor	Glenn Bethel	202-720-1280	glenn.bethel@fas.usda.gov
Sr. Agricultural Economist	Paul Provance	202-720-0873	paul.provance@fas.usda.gov
Program Analyst	Mary Jackson	202-720-0886	mary.jackson@fas.usda.gov

COUNTRY- AND REGION-SPECIFIC INFORMATION

South America	Denise McWilliams, PhD	202-720-0107	denise.mcwilliams@fas.usda.gov
Europe and North Africa	Bryan Purcell	202-690-0138	bryan.purcell@fas.usda.gov
FSU-12, Russia	Mark Lindeman	202-690-0143	mark.lindeman@fas.usda.gov
Canada, Mexico, Central America,	Arnella Trent	202-720-0881	arnella.trent@fas.usda.gov
China, East Asia	Paulette Sandene	202-690-0133	paulette.sandene@fas.usda.gov
South Asia, India	Dath Mita, PhD	202-720-7339	mita.dath@fas.usda.gov
Australia & New Zealand			
Africa	Curt Reynolds, PhD	202-690-0134	curt.reynoldsc@fas.usda.gov
Middle East and South East Asia	Michael Shean	202-720-7366	michael.shean@fas.usda.gov
Eastern United States	Robert Tetrault	202-720-1071	robert.tetrault@fas.usda.gov
Western United States	Jim Crutchfield	202-690-0135	james.crutchfield@fas.usda.gov
Brazil, Caribbean	William Baker, PhD	202-720-6740	william.baker@fas.usda.gov

Table 01 World Crop Production Summary

Million Metric Tons

Commodity	World	Total Foreign	North America			EU-27	Former Soviet		Asia (WAP)					South America		Selected Other			All Others
			United States	Canada	Mexico		Russia	Ukraine	China	India	Indonesia	Pakistan	Thailand	Argentina	Brazil	Australia	South Africa	Turkey	
---Million metric tons---																			
Wheat																			
2008/09	683.3	615.2	68.0	28.6	4.0	151.1	63.7	25.9	112.5	78.6	nr	21.0	nr	10.1	5.9	21.4	2.1	16.8	73.6
2009/10 prel.	679.9	619.5	60.3	26.5	4.3	138.2	61.7	20.9	115.0	80.7	nr	24.0	nr	9.6	4.9	22.5	1.9	18.0	91.3
2010/11 proj.																			
Jun	668.5	612.3	56.3	24.5	4.4	143.0	57.5	20.0	112.0	80.0	nr	22.6	nr	12.0	5.5	22.0	1.6	17.5	89.7
Jul	661.1	600.8	60.3	20.5	4.4	141.8	53.0	20.0	114.5	79.0	nr	22.6	nr	12.0	5.5	22.0	1.6	17.0	86.9
Coarse Grains																			
2008/09	1,109.5	783.7	325.9	27.2	32.3	161.4	40.7	26.2	172.7	39.6	8.7	3.6	4.6	19.1	53.6	12.3	13.1	10.4	158.2
2009/10 prel.	1,104.1	754.9	349.2	22.4	28.4	151.8	31.8	24.1	161.4	34.4	8.3	3.6	4.2	28.3	55.5	11.6	14.5	10.6	164.1
2010/11 proj.																			
Jun	1,128.4	774.1	354.2	24.1	31.9	147.6	30.1	25.0	173.0	40.6	8.4	3.6	4.0	27.1	53.7	11.0	13.0	10.5	170.6
Jul	1,117.6	766.8	350.7	22.1	31.9	146.4	26.8	25.0	173.0	40.6	8.4	3.6	4.0	27.1	53.7	11.0	13.0	10.5	169.8
Rice, Milled																			
2008/09	448.0	441.6	6.4	nr	0.2	1.6	0.5	0.1	134.3	99.2	38.3	6.7	19.9	0.9	8.6	0.0	nr	0.4	131.0
2009/10 prel.	440.6	433.7	6.9	nr	0.2	2.0	0.6	0.1	137.0	87.5	38.8	6.5	20.3	0.9	7.8	0.1	nr	0.4	131.4
2010/11 proj.																			
Jun	459.4	451.8	7.6	nr	0.2	2.0	0.6	0.1	137.5	99.0	40.0	6.5	20.6	1.0	8.4	0.2	nr	0.4	135.3
Jul	459.3	451.5	7.8	nr	0.2	2.0	0.6	0.1	137.5	99.0	40.0	6.5	20.6	1.0	8.4	0.2	nr	0.4	134.9
Total Grains																			
2008/09	2,240.8	1,840.5	400.3	55.8	36.4	314.2	104.9	52.2	419.5	217.4	47.0	31.3	24.4	30.1	68.1	33.7	15.2	27.6	362.8
2009/10 prel.	2,224.5	1,808.1	416.4	48.9	32.9	291.9	94.1	45.1	413.4	202.5	47.1	34.2	24.5	38.8	68.3	34.2	16.4	29.0	386.8
2010/11 proj.																			
Jun	2,256.3	1,838.2	418.1	48.6	36.4	292.5	88.2	45.1	422.5	219.6	48.4	32.7	24.6	40.1	67.6	33.2	14.6	28.4	395.6
Jul	2,237.9	1,819.0	418.9	42.6	36.4	290.2	80.4	45.1	425.0	218.6	48.4	32.7	24.6	40.1	67.6	33.2	14.6	27.9	391.6
Oilseeds																			
2008/09	396.6	307.4	89.2	16.1	0.7	27.2	8.8	10.7	58.1	33.4	9.1	5.0	0.7	35.5	60.3	2.4	1.5	1.6	36.2
2009/10 prel.	441.2	342.3	98.9	15.4	0.6	29.8	8.0	9.5	57.5	31.7	9.4	5.3	0.6	57.9	71.5	2.6	1.2	1.5	39.7
2010/11 proj.																			
Jun	440.2	341.1	99.1	15.8	0.6	29.5	9.3	10.5	57.0	34.4	10.2	5.6	0.6	54.5	67.4	2.8	1.4	1.7	39.7
Jul	440.7	340.0	100.8	14.2	0.6	29.1	9.4	10.5	56.8	34.4	10.2	5.6	0.6	54.5	68.0	2.9	1.4	1.7	39.9
Cotton																			
2008/09	107.5	nr	nr	nr	nr	nr	nr	nr	nr	nr	nr	nr	nr	nr	nr	nr	nr	nr	107.2
2009/10 prel.	102.5	90.4	12.2	nr	0.4	1.0	nr	nr	32.5	23.5	0.0	9.6	0.0	0.8	5.8	1.6	0.0	1.8	13.3
2010/11 proj.																			
Jun	114.3	97.6	16.7	nr	0.6	1.4	nr	nr	33.0	25.0	0.0	10.5	0.0	0.9	6.8	2.2	0.0	2.1	15.0
Jul	116.0	97.7	18.3	nr	0.6	1.4	nr	nr	33.0	25.0	0.0	10.2	0.0	0.9	7.0	2.2	0.0	2.1	15.2

1/ Includes wheat, coarse grains, and rice (milled) shown above.

Table 02 Wheat Area, Yield, and Production

Country / Region	Area (Million hectares)				Yield (Metric tons per hectare)				Production (Million metric tons)				Change in Production			
	Prel.		2010/11 Proj.		Prel.		2010/11 Proj.		Prel.		2010/11 Proj.		From last month		From last year	
	2008/09	2009/10	Jun	Jul	2008/09	2009/10	Jun	Jul	2008/09	2009/10	Jun	Jul	MMT	Percent	MMT	Percent
World	225.56	225.59	223.55	222.16	3.03	3.01	2.99	2.98	683.26	679.85	668.52	661.07	-7.45	-1.11	-18.78	-2.76
United States	22.54	20.18	19.05	19.53	3.02	2.99	2.95	3.09	68.02	60.31	56.26	60.30	4.04	7.18	-0.01	-0.02
Total Foreign	203.01	205.41	204.49	202.63	3.03	3.02	2.99	2.96	615.25	619.54	612.26	600.76	-11.50	-1.88	-18.77	-3.03
China	23.62	24.20	24.00	24.30	4.76	4.75	4.67	4.71	112.46	115.00	112.00	114.50	2.50	2.23	-0.50	-0.43
South Asia																
India	28.15	27.90	28.70	28.70	2.79	2.89	2.79	2.75	78.57	80.68	80.00	79.00	-1.00	-1.25	-1.68	-2.08
Pakistan	8.55	9.05	9.00	9.00	2.45	2.66	2.51	2.51	20.96	24.03	22.60	22.60	0.00	0.00	-1.43	-5.96
Afghanistan	1.60	2.50	2.30	2.30	0.94	1.70	1.61	1.61	1.50	4.25	3.70	3.70	0.00	0.00	-0.55	-12.94
Former Soviet Union - 12																
Russia	26.65	28.70	27.40	26.80	2.39	2.15	2.10	1.98	63.70	61.70	57.50	53.00	-4.50	-7.83	-8.70	-14.10
Ukraine	7.05	6.75	6.45	6.45	3.67	3.10	3.10	3.10	25.90	20.90	20.00	20.00	0.00	0.00	-0.90	-4.31
Kazakhstan	13.50	14.70	14.50	14.60	0.93	1.16	1.17	0.96	12.55	17.00	17.00	14.00	-3.00	-17.65	-3.00	-17.65
Uzbekistan	1.36	1.40	1.40	1.40	4.41	4.43	4.43	4.43	6.00	6.20	6.20	6.20	0.00	0.00	0.00	0.00
EU-27	26.98	25.72	25.80	25.63	5.60	5.37	5.54	5.53	151.11	138.20	142.97	141.82	-1.15	-0.80	3.63	2.62
France	5.49	5.15	5.40	5.43	7.10	7.45	7.22	7.00	39.01	38.32	39.00	38.00	-1.00	-2.56	-0.32	-0.85
Germany	3.21	3.23	3.32	3.32	8.09	7.81	7.57	7.68	25.99	25.18	25.12	25.50	0.38	1.51	0.32	1.26
United Kingdom	2.08	1.81	1.94	1.94	8.28	7.93	8.09	8.09	17.23	14.38	15.70	15.70	0.00	0.00	1.32	9.19
Poland	2.28	2.35	2.20	2.20	4.07	4.15	4.00	4.00	9.28	9.75	8.80	8.80	0.00	0.00	-0.95	-9.74
Spain	2.07	1.77	1.85	1.80	3.30	2.69	3.30	3.00	6.83	4.75	6.10	5.40	-0.70	-11.48	0.65	13.68
Italy	2.45	1.83	1.78	1.70	3.83	3.35	3.71	3.94	9.40	6.14	6.60	6.70	0.10	1.52	0.56	9.07
Denmark	0.64	0.74	0.72	0.74	7.85	8.11	7.78	7.77	5.02	6.00	5.60	5.75	0.15	2.68	-0.25	-4.10
Hungary	1.13	1.14	1.09	1.03	5.00	3.85	4.68	4.66	5.62	4.40	5.10	4.80	-0.30	-5.88	0.40	9.19
Romania	2.17	2.15	2.08	2.05	3.48	2.47	3.37	3.34	7.56	5.30	7.00	6.85	-0.15	-2.14	1.55	29.25
Bulgaria	1.11	1.25	1.04	1.04	4.17	3.19	3.46	3.85	4.63	4.00	3.60	4.00	0.40	11.11	0.00	0.00
Canada	10.03	9.50	9.20	7.70	2.85	2.79	2.66	2.66	28.61	26.50	24.50	20.50	-4.00	-16.33	-6.00	-22.64
Australia	13.53	13.79	13.00	13.00	1.58	1.63	1.69	1.69	21.42	22.50	22.00	22.00	0.00	0.00	-0.50	-2.22
Middle East																
Turkey	7.70	7.80	8.00	8.00	2.18	2.31	2.19	2.13	16.80	18.00	17.50	17.00	-0.50	-2.86	-1.00	-5.56
Iran	5.85	6.00	6.40	6.40	1.71	2.00	2.25	2.25	10.00	12.00	14.40	14.40	0.00	0.00	2.40	20.00
Syria	1.49	1.50	1.35	1.35	1.44	2.67	2.78	2.78	2.14	4.00	3.75	3.75	0.00	0.00	-0.25	-6.25
North Africa																
Egypt	1.23	1.32	1.32	1.32	6.51	6.45	6.52	6.52	7.98	8.52	8.60	8.60	0.00	0.00	0.08	0.90
Morocco	2.86	2.98	2.80	2.80	1.31	2.14	1.61	1.61	3.73	6.37	4.50	4.50	0.00	0.00	-1.87	-29.36
Argentina	5.12	3.20	4.30	4.30	1.97	3.00	2.79	2.79	10.10	9.60	12.00	12.00	0.00	0.00	2.40	25.00
Others	17.75	18.40	18.58	18.58	2.35	2.40	2.32	2.33	41.71	44.09	43.04	43.19	0.15	0.35	-0.89	-2.03

World and Selected Countries and Regions

Table 03 Total Coarse Grain Area, Yield, and Production

Country / Region	Area (Million hectares)				Yield (Metric tons per hectare)				Production (Million metric tons)				Change in Production			
	2008/09	Prel.	2010/11 Proj.		2008/09	Prel.	2010/11 Proj.		2008/09	Prel.	2010/11 Proj.		From last month		From last year	
		2009/10	Jun	Jul		2009/10	Jun	Jul		2009/10	Jun	Jul	MMT	Percent	MMT	Percent
World	313.58	306.57	310.95	308.05	3.54	3.60	3.63	3.63	1,109.53	1,104.10	1,128.37	1,117.56	-10.81	-0.96	13.45	1.22
United States	36.94	36.36	37.07	36.54	8.82	9.60	9.56	9.60	325.87	349.22	354.25	350.74	-3.51	-0.99	1.52	0.44
Total Foreign	276.64	270.21	273.87	271.51	2.83	2.79	2.83	2.82	783.66	754.88	774.12	766.82	-7.30	-0.94	11.93	1.58
China	32.55	32.97	33.43	33.43	5.30	4.89	5.17	5.17	172.66	161.35	173.00	173.00	0.00	0.00	11.65	7.22
South America																
Brazil	15.38	14.21	14.03	14.03	3.49	3.91	3.83	3.83	53.62	55.51	53.73	53.73	0.00	0.00	-1.78	-3.20
Argentina	3.86	4.25	4.20	4.20	4.96	6.65	6.46	6.46	19.13	28.28	27.08	27.08	0.00	0.00	-1.20	-4.23
EU-27	33.33	32.19	31.27	30.55	4.84	4.71	4.72	4.79	161.43	151.76	147.57	146.35	-1.22	-0.83	-5.40	-3.56
France	4.10	4.18	3.99	3.87	7.56	7.54	7.44	7.38	30.97	31.54	29.64	28.55	-1.10	-3.69	-2.99	-9.49
Germany	3.83	3.52	3.35	3.38	6.30	6.63	6.50	6.63	24.12	23.30	21.76	22.42	0.66	3.03	-0.88	-3.77
Poland	6.25	6.16	5.97	5.98	2.93	3.21	2.92	2.95	18.31	19.74	17.40	17.62	0.22	1.24	-2.13	-10.77
Spain	4.53	4.14	4.02	4.03	3.66	2.93	3.51	3.44	16.62	12.14	14.11	13.86	-0.25	-1.74	1.72	14.18
Italy	1.52	1.40	1.35	1.33	7.63	6.79	7.60	7.67	11.55	9.52	10.27	10.20	-0.07	-0.67	0.68	7.12
Hungary	1.77	1.72	1.78	1.67	6.30	5.29	5.52	5.96	11.15	9.09	9.83	9.92	0.09	0.92	0.83	9.14
United Kingdom	1.19	1.32	1.06	1.06	5.92	5.81	5.75	5.75	7.06	7.64	6.07	6.07	0.00	0.00	-1.57	-20.58
Romania	3.10	3.10	3.17	2.99	3.10	2.91	2.91	3.15	9.62	9.04	9.24	9.42	0.18	1.95	0.38	4.17
Former Soviet Union - 12																
Russia	17.65	15.90	15.30	14.55	2.31	2.00	1.97	1.84	40.70	31.82	30.10	26.80	-3.30	-10.96	-5.02	-15.76
Ukraine	7.59	8.08	8.12	8.12	3.45	2.99	3.07	3.07	26.22	24.12	24.95	24.95	0.00	0.00	0.83	3.44
Kazakhstan	2.48	2.38	2.38	2.18	0.93	1.31	1.31	1.06	2.32	3.12	3.12	2.32	-0.80	-25.68	-0.80	-25.68
Africa	78.64	80.40	79.99	79.99	1.33	1.34	1.36	1.36	104.41	108.00	109.09	109.09	0.00	0.00	1.09	1.00
Nigeria	17.95	18.25	18.35	18.35	1.49	1.53	1.53	1.53	26.67	27.96	28.10	28.10	0.00	0.00	0.14	0.50
South Africa	3.77	4.13	3.90	3.90	3.47	3.51	3.34	3.34	13.08	14.53	13.03	13.03	0.00	0.00	-1.50	-10.31
Ethiopia	4.88	4.93	4.93	4.93	1.85	1.63	1.81	1.81	9.03	8.05	8.93	8.93	0.00	0.00	0.88	10.92
Egypt	0.99	1.04	1.08	1.08	7.77	7.57	7.46	7.46	7.71	7.88	8.06	8.06	0.00	0.00	0.18	2.26
India	26.65	24.28	26.49	26.49	1.49	1.41	1.53	1.53	39.61	34.35	40.60	40.60	0.00	0.00	6.25	18.20
Southeast Asia																
Indonesia	3.22	3.13	3.15	3.15	2.70	2.65	2.67	2.67	8.70	8.30	8.40	8.40	0.00	0.00	0.10	1.20
Philippines	2.66	2.51	2.65	2.65	2.58	2.48	2.57	2.57	6.85	6.24	6.80	6.80	0.00	0.00	0.57	9.06
Thailand	1.11	1.04	1.01	1.01	4.13	4.02	3.94	3.94	4.56	4.16	3.96	3.96	0.00	0.00	-0.20	-4.81
Mexico	9.63	8.36	9.46	9.46	3.35	3.40	3.38	3.38	32.25	28.45	31.93	31.93	0.00	0.00	3.48	12.24
Canada	6.33	5.22	5.71	5.01	4.29	4.29	4.23	4.42	27.18	22.37	24.11	22.11	-2.00	-8.30	-0.27	-1.20
Australia	6.79	6.08	5.86	5.86	1.81	1.90	1.87	1.87	12.27	11.57	10.97	10.97	0.00	0.00	-0.60	-5.19
Turkey	4.25	4.23	4.18	4.18	2.45	2.50	2.51	2.51	10.42	10.60	10.50	10.50	0.00	0.00	-0.10	-0.94
Others	24.54	24.98	26.67	26.67	2.50	2.60	2.56	2.56	61.34	64.91	68.23	68.25	0.02	0.02	3.33	5.13

World and Selected Countries and Regions

Table 04 Corn Area, Yield, and Production

Country / Region	Area (Million hectares)				Yield (Metric tons per hectare)				Production (Million metric tons)				Change in Production			
	Prel.		2010/11 Proj.		Prel.		2010/11 Proj.		Prel.		2010/11 Proj.		From last month		From last year	
	2008/09	2009/10	Jun	Jul	2008/09	2009/10	Jun	Jul	2008/09	2009/10	Jun	Jul	MMT	Percent	MMT	Percent
World	158.19	156.00	159.64	158.86	5.04	5.19	5.24	5.24	797.83	809.02	835.78	832.38	-3.40	-0.41	23.36	2.89
United States	31.80	32.21	33.09	32.78	9.66	10.34	10.26	10.26	307.14	333.01	339.61	336.44	-3.18	-0.94	3.43	1.03
Total Foreign	126.39	123.79	126.55	126.08	3.88	3.85	3.92	3.93	490.69	476.01	496.16	495.94	-0.22	-0.04	19.93	4.19
China	29.86	30.40	30.80	30.80	5.56	5.10	5.39	5.39	165.90	155.00	166.00	166.00	0.00	0.00	11.00	7.10
South America																
Brazil	14.10	13.00	12.75	12.75	3.62	4.08	4.00	4.00	51.00	53.00	51.00	51.00	0.00	0.00	-2.00	-3.77
Argentina	2.50	2.70	2.60	2.60	6.00	8.33	8.08	8.08	15.00	22.50	21.00	21.00	0.00	0.00	-1.50	-6.67
Mexico	7.32	6.23	7.20	7.20	3.31	3.42	3.33	3.33	24.23	21.30	24.00	24.00	0.00	0.00	2.70	12.68
EU-27	8.79	8.29	8.39	8.07	7.09	6.73	6.76	7.07	62.32	55.77	56.72	56.99	0.28	0.49	1.22	2.19
France	1.70	1.65	1.65	1.58	9.31	9.27	9.21	9.33	15.84	15.30	15.20	14.70	-0.50	-3.29	-0.60	-3.92
Italy	0.99	0.92	0.85	0.86	9.80	8.63	10.00	10.00	9.72	7.90	8.50	8.60	0.10	1.18	0.70	8.86
Hungary	1.20	1.18	1.25	1.13	7.39	6.36	6.40	7.17	8.87	7.50	8.00	8.10	0.10	1.25	0.60	8.00
Romania	2.45	2.35	2.40	2.25	3.21	3.19	3.13	3.42	7.87	7.50	7.50	7.70	0.20	2.67	0.20	2.67
Poland	0.32	0.27	0.27	0.28	5.82	6.23	5.66	5.89	1.84	1.71	1.50	1.65	0.15	10.00	-0.06	-3.34
India	8.20	8.00	8.20	8.20	2.41	2.16	2.44	2.44	19.73	17.30	20.00	20.00	0.00	0.00	2.70	15.61
Canada	1.17	1.15	1.20	1.20	9.06	8.31	8.75	8.75	10.59	9.56	10.50	10.50	0.00	0.00	0.94	9.83
Indonesia	3.22	3.13	3.15	3.15	2.70	2.65	2.67	2.67	8.70	8.30	8.40	8.40	0.00	0.00	0.10	1.20
Ukraine	2.40	2.10	2.60	2.60	4.75	5.00	5.00	5.00	11.40	10.50	13.00	13.00	0.00	0.00	2.50	23.81
Serbia	1.28	1.20	1.30	1.30	4.80	5.33	5.00	5.00	6.13	6.40	6.50	6.50	0.00	0.00	0.10	1.56
Egypt	0.78	0.83	0.87	0.87	8.51	8.21	8.05	8.05	6.65	6.82	7.00	7.00	0.00	0.00	0.18	2.61
Philippines	2.66	2.51	2.65	2.65	2.58	2.48	2.57	2.57	6.85	6.24	6.80	6.80	0.00	0.00	0.57	9.06
Vietnam	1.09	1.20	1.20	1.20	4.08	4.40	4.58	4.58	4.43	5.28	5.50	5.50	0.00	0.00	0.22	4.17
Thailand	1.07	1.00	0.97	0.97	4.21	4.10	4.02	4.02	4.50	4.10	3.90	3.90	0.00	0.00	-0.20	-4.88
Russia	1.65	1.10	1.50	1.35	4.00	3.59	3.67	3.70	6.60	3.95	5.50	5.00	-0.50	-9.09	1.05	26.58
Sub-Saharan Africa																
South Africa	2.90	3.25	3.00	3.00	4.34	4.31	4.17	4.17	12.57	14.00	12.50	12.50	0.00	0.00	-1.50	-10.71
Nigeria	4.70	4.90	4.90	4.90	1.70	1.79	1.78	1.78	7.97	8.76	8.70	8.70	0.00	0.00	-0.06	-0.67
Ethiopia	1.98	2.00	2.00	2.00	2.22	1.95	2.20	2.20	4.40	3.90	4.40	4.40	0.00	0.00	0.50	12.82
Zimbabwe	1.30	1.10	1.30	1.30	0.40	0.59	0.58	0.58	0.53	0.65	0.75	0.75	0.00	0.00	0.10	15.38
Turkey	0.52	0.50	0.50	0.50	7.98	8.00	7.80	7.80	4.15	4.00	3.90	3.90	0.00	0.00	-0.10	-2.50
Others	28.92	29.19	29.47	29.47	1.97	2.01	2.04	2.04	57.06	58.68	60.09	60.09	0.00	0.00	1.42	2.41

World and Selected Countries and Regions

Table 05 Barley Area, Yield, and Production

Country / Region	Area (Million hectares)				Yield (Metric tons per hectare)				Production (Million metric tons)				Change in Production			
	Prel.		2010/11 Proj.		Prel.		2010/11 Proj.		Prel.		2010/11 Proj.		From last month		From last year	
	2008/09	2009/10	Jun	Jul	2008/09	2009/10	Jun	Jul	2008/09	2009/10	Jun	Jul	MMT	Percent	MMT	Percent
World	55.88	55.40	53.95	52.27	2.78	2.69	2.64	2.59	155.19	148.75	142.45	135.54	-6.92	-4.85	-13.21	-8.88
United States	1.53	1.26	1.15	1.03	3.42	3.93	3.60	3.85	5.23	4.95	4.14	3.97	-0.17	-4.11	-0.98	-19.84
Total Foreign	54.35	54.14	52.80	51.24	2.76	2.66	2.62	2.57	149.96	143.80	138.32	131.57	-6.75	-4.88	-12.23	-8.51
Russia	9.60	9.05	8.10	7.50	2.41	1.98	1.91	1.73	23.10	17.90	15.50	13.00	-2.50	-16.13	-4.90	-27.37
EU-27	14.51	13.85	13.15	12.74	4.51	4.42	4.47	4.42	65.45	61.26	58.73	56.37	-2.36	-4.02	-4.89	-7.98
Germany	1.96	1.80	1.76	1.69	6.10	6.56	6.36	6.45	11.97	11.80	11.20	10.88	-0.32	-2.86	-0.92	-7.80
France	1.80	1.88	1.70	1.66	6.77	6.84	6.62	6.39	12.17	12.88	11.25	10.60	-0.65	-5.78	-2.28	-17.70
Spain	3.49	3.05	2.95	2.95	3.23	2.43	3.12	3.05	11.27	7.40	9.20	9.00	-0.20	-2.17	1.60	21.62
United Kingdom	1.03	1.16	0.90	0.90	5.95	5.84	5.78	5.78	6.14	6.77	5.20	5.20	0.00	0.00	-1.57	-23.18
Denmark	0.72	0.59	0.60	0.60	4.69	5.77	5.38	5.38	3.36	3.42	3.20	3.20	0.00	0.00	-0.22	-6.46
Poland	1.21	1.16	1.10	1.10	3.00	3.40	3.18	3.18	3.62	3.94	3.50	3.50	0.00	0.00	-0.44	-11.05
Czech Republic	0.48	0.43	0.40	0.40	4.66	4.23	4.25	3.94	2.24	1.80	1.70	1.58	-0.12	-7.29	-0.22	-12.35
Finland	0.59	0.60	0.58	0.39	3.63	3.63	3.48	3.64	2.13	2.18	2.00	1.40	-0.60	-30.00	-0.78	-35.78
Sweden	0.40	0.36	0.37	0.32	4.19	4.65	4.32	4.69	1.67	1.68	1.60	1.50	-0.10	-6.25	-0.18	-10.55
Italy	0.33	0.31	0.32	0.29	3.74	3.42	3.71	3.52	1.24	1.05	1.17	1.02	-0.15	-12.82	-0.03	-2.76
Hungary	0.33	0.32	0.31	0.32	4.45	3.22	4.01	3.44	1.48	1.03	1.25	1.10	-0.15	-12.00	0.07	6.49
Austria	0.19	0.18	0.18	0.17	5.20	4.59	5.20	5.06	0.97	0.84	0.91	0.85	-0.06	-6.59	0.02	1.80
Ukraine	4.15	5.00	4.70	4.70	3.04	2.36	2.23	2.23	12.60	11.80	10.50	10.50	0.00	0.00	-1.30	-11.02
Canada	3.50	2.92	3.00	2.65	3.36	3.26	3.17	3.17	11.78	9.52	9.50	8.40	-1.10	-11.58	-1.12	-11.76
Australia	5.02	4.48	4.20	4.20	1.59	1.85	1.81	1.81	8.00	8.30	7.60	7.60	0.00	0.00	-0.70	-8.43
Turkey	3.40	3.40	3.35	3.35	1.68	1.76	1.79	1.79	5.70	6.00	6.00	6.00	0.00	0.00	0.00	0.00
China	0.79	0.72	0.80	0.80	3.56	3.50	3.88	3.88	2.82	2.50	3.10	3.10	0.00	0.00	0.60	24.00
Iran	1.30	1.40	1.60	1.60	1.54	1.86	1.94	1.94	2.00	2.60	3.10	3.10	0.00	0.00	0.50	19.23
Morocco	2.18	2.18	1.91	1.91	0.58	1.74	1.47	1.47	1.27	3.80	2.80	2.80	0.00	0.00	-1.00	-26.32
Kazakhstan	2.10	2.00	2.00	1.80	0.86	1.30	1.30	1.00	1.80	2.60	2.60	1.80	-0.80	-30.77	-0.80	-30.77
Ethiopia	0.95	0.98	0.98	0.98	1.56	1.61	1.44	1.44	1.48	1.57	1.40	1.40	0.00	0.00	-0.17	-10.77
Belarus	0.61	0.50	0.60	0.60	3.61	3.30	3.33	3.33	2.20	1.65	2.00	2.00	0.00	0.00	0.35	21.21
India	0.75	0.78	0.79	0.79	1.60	2.17	2.03	2.03	1.20	1.69	1.60	1.60	0.00	0.00	-0.09	-5.33
Argentina	0.63	0.54	0.55	0.55	3.33	2.50	3.40	3.40	2.11	1.35	1.87	1.87	0.00	0.00	0.52	38.21
Mexico	0.32	0.23	0.31	0.31	2.56	2.17	2.52	2.52	0.81	0.50	0.78	0.78	0.00	0.00	0.28	56.20
Iraq	0.50	0.50	1.25	1.25	0.86	0.90	0.92	0.92	0.43	0.45	1.15	1.15	0.00	0.00	0.70	155.56
Algeria	0.70	1.24	1.00	1.00	0.80	1.94	2.00	2.00	0.56	2.40	2.00	2.00	0.00	0.00	-0.40	-16.67
Others	3.34	4.38	4.52	4.52	1.99	1.81	1.79	1.79	6.64	7.92	8.09	8.10	0.02	0.19	0.19	2.36

World and Selected Countries and Regions

Table 06 Oats Area, Yield, and Production

Country / Region	Area (Million hectares)				Yield (Metric tons per hectare)				Production (Million metric tons)				Change in Production			
	Prel.		2010/11 Proj.		Prel.		2010/11 Proj.		Prel.		2010/11 Proj.		From last month		From last year	
	2008/09	2009/10	Jun	Jul	2008/09	2009/10	Jun	Jul	2008/09	2009/10	Jun	Jul	MMT	Percent	MMT	Percent
World	12.80	12.00	12.33	11.91	2.04	2.01	1.97	1.96	26.14	24.16	24.23	23.35	-0.88	-3.62	-0.80	-3.32
United States	0.57	0.56	0.56	0.53	2.28	2.42	2.35	2.39	1.29	1.35	1.31	1.27	-0.03	-2.53	-0.08	-5.77
Total Foreign	12.24	11.44	11.77	11.38	2.03	1.99	1.95	1.94	24.84	22.81	22.92	22.08	-0.84	-3.68	-0.73	-3.18
Russia	3.70	3.35	3.40	3.40	1.57	1.61	1.47	1.47	5.80	5.40	5.00	5.00	0.00	0.00	-0.40	-7.41
Canada	1.45	0.95	1.35	1.00	2.95	2.95	2.74	2.80	4.27	2.80	3.70	2.80	-0.90	-24.32	0.00	0.00
EU-27	2.99	2.91	2.84	2.79	3.00	2.93	2.91	2.98	8.98	8.52	8.26	8.32	0.06	0.69	-0.20	-2.35
Poland	0.55	0.53	0.50	0.53	2.29	2.70	2.20	2.41	1.26	1.42	1.10	1.27	0.17	15.00	-0.16	-10.92
Finland	0.36	0.34	0.33	0.30	3.42	3.54	3.48	3.56	1.21	1.21	1.15	1.05	-0.10	-8.70	-0.16	-13.44
Spain	0.51	0.55	0.53	0.54	2.35	1.64	1.89	1.94	1.19	0.91	1.00	1.04	0.04	4.40	0.14	15.23
Germany	0.18	0.16	0.16	0.15	4.43	5.02	5.00	5.50	0.79	0.82	0.80	0.83	0.03	3.75	0.01	1.34
Sweden	0.22	0.19	0.18	0.16	3.68	3.99	4.00	4.00	0.82	0.75	0.72	0.64	-0.08	-11.11	-0.11	-14.67
United Kingdom	0.14	0.13	0.13	0.13	5.81	5.78	5.77	5.77	0.78	0.76	0.75	0.75	0.00	0.00	-0.01	-0.92
France	0.10	0.12	0.11	0.11	4.72	4.90	4.64	4.77	0.47	0.57	0.51	0.52	0.01	1.96	-0.05	-9.25
Italy	0.15	0.13	0.14	0.13	2.41	2.35	2.39	2.35	0.36	0.32	0.34	0.32	-0.02	-5.97	0.00	0.00
Denmark	0.08	0.07	0.07	0.07	3.83	4.03	4.15	4.15	0.32	0.27	0.27	0.27	0.00	0.00	0.00	0.00
Romania	0.21	0.20	0.21	0.20	2.01	1.45	1.71	1.74	0.43	0.30	0.35	0.34	-0.01	-2.86	0.05	15.25
Czech Republic	0.05	0.05	0.06	0.06	3.18	3.54	3.09	3.27	0.16	0.18	0.17	0.18	0.01	5.88	0.00	1.69
Hungary	0.06	0.05	0.06	0.06	3.00	2.19	2.55	3.09	0.18	0.11	0.14	0.17	0.03	21.43	0.06	49.12
Austria	0.03	0.03	0.03	0.03	4.00	3.89	3.93	4.04	0.11	0.11	0.11	0.11	0.00	-0.91	0.00	0.00
Ireland	0.02	0.02	0.02	0.02	7.70	7.50	7.48	7.48	0.18	0.14	0.16	0.16	0.00	0.00	0.02	16.30
Lithuania	0.07	0.06	0.06	0.06	2.07	1.88	2.00	2.00	0.14	0.12	0.12	0.12	0.00	0.00	0.00	0.00
Australia	0.87	0.92	0.92	0.92	1.33	1.37	1.37	1.37	1.16	1.26	1.26	1.26	0.00	0.00	0.00	0.00
Ukraine	0.45	0.42	0.40	0.40	2.11	1.74	1.75	1.75	0.95	0.73	0.70	0.70	0.00	0.00	-0.03	-4.11
China	0.50	0.50	0.50	0.50	1.20	1.20	1.20	1.20	0.60	0.60	0.60	0.60	0.00	0.00	0.00	0.00
Belarus	0.18	0.25	0.25	0.25	3.33	3.20	3.20	3.20	0.60	0.80	0.80	0.80	0.00	0.00	0.00	0.00
Brazil	0.35	0.35	0.35	0.35	1.36	1.36	1.36	1.36	0.48	0.48	0.48	0.48	0.00	0.00	0.00	0.00
Argentina	0.21	0.25	0.20	0.20	1.37	2.00	1.75	1.75	0.29	0.50	0.35	0.35	0.00	0.00	-0.15	-30.00
Chile	0.10	0.07	0.09	0.09	3.41	5.07	4.44	4.44	0.34	0.35	0.40	0.40	0.00	0.00	0.06	15.94
Norway	0.08	0.07	0.07	0.07	4.26	3.36	3.36	3.36	0.33	0.25	0.25	0.25	0.00	0.00	0.00	0.00
Turkey	0.10	0.10	0.10	0.10	2.00	2.10	2.10	2.10	0.20	0.21	0.21	0.21	0.00	0.00	0.00	0.00
Kazakhstan	0.16	0.16	0.16	0.16	1.00	1.00	1.00	1.00	0.16	0.16	0.16	0.16	0.00	0.00	0.00	0.00
Serbia	0.07	0.07	0.07	0.07	1.85	1.85	1.85	1.85	0.12	0.12	0.12	0.12	0.00	0.00	0.00	0.00
Others	1.03	1.07	1.07	1.07	0.55	0.60	0.60	0.60	0.57	0.64	0.64	0.64	0.00	0.00	0.00	0.00

World and Selected Countries and Regions

Table 07 Rye Area, Yield, and Production

Country / Region	Area (Million hectares)				Yield (Metric tons per hectare)				Production (Million metric tons)				Change in Production			
	Prel.		2010/11 Proj.		Prel.		2010/11 Proj.		Prel.		2010/11 Proj.		From last month		From last year	
	2008/09	2009/10	Jun	Jul	2008/09	2009/10	Jun	Jul	2008/09	2009/10	Jun	Jul	MMT	Percent	MMT	Percent
World	6.53	6.48	5.77	5.78	2.65	2.66	2.63	2.60	17.31	17.22	15.16	15.01	-0.15	-1.02	-2.21	-12.84
United States	0.11	0.10	0.10	0.10	1.86	1.75	1.70	1.70	0.20	0.18	0.17	0.17	0.00	0.00	-0.01	-3.37
Total Foreign	6.42	6.37	5.67	5.67	2.67	2.67	2.64	2.61	17.11	17.04	14.99	14.83	-0.15	-1.03	-2.20	-12.94
EU-27	2.75	2.70	2.63	2.64	3.36	3.45	3.31	3.36	9.24	9.31	8.71	8.85	0.15	1.68	-0.45	-4.88
Poland	1.40	1.40	1.40	1.38	2.47	2.60	2.36	2.33	3.45	3.63	3.30	3.20	-0.10	-3.03	-0.43	-11.85
Germany	0.74	0.66	0.61	0.64	5.08	5.70	5.57	5.78	3.74	3.76	3.40	3.70	0.30	8.82	-0.06	-1.60
Spain	0.11	0.13	0.13	0.13	2.55	1.39	2.28	1.77	0.28	0.18	0.29	0.23	-0.06	-19.30	0.05	27.07
Lithuania	0.07	0.08	0.08	0.08	2.77	2.68	2.75	2.75	0.21	0.22	0.22	0.22	0.00	0.00	0.00	0.00
Latvia	0.06	0.06	0.06	0.06	3.31	2.75	3.00	3.00	0.20	0.16	0.17	0.17	0.00	0.00	0.00	1.85
France	0.03	0.03	0.03	0.03	4.73	5.20	5.00	5.00	0.12	0.13	0.13	0.13	0.00	0.00	0.00	0.00
Denmark	0.03	0.04	0.05	0.05	5.10	5.57	5.44	5.44	0.15	0.25	0.25	0.25	0.00	0.00	0.00	0.00
Czech Republic	0.04	0.03	0.03	0.03	4.88	5.03	4.38	4.84	0.21	0.17	0.14	0.16	0.02	10.71	-0.01	-6.63
Austria	0.05	0.05	0.05	0.05	4.13	3.76	4.00	4.02	0.22	0.18	0.20	0.19	-0.01	-5.61	0.00	0.54
Sweden	0.03	0.04	0.03	0.03	6.04	5.92	5.83	6.00	0.17	0.22	0.18	0.15	-0.03	-14.29	-0.07	-31.51
Hungary	0.04	0.04	0.04	0.04	2.59	1.80	2.25	2.70	0.11	0.07	0.09	0.10	0.01	11.11	0.03	35.14
Slovakia	0.03	0.02	0.02	0.02	3.08	3.05	2.95	2.95	0.08	0.06	0.07	0.07	0.00	0.00	0.00	6.56
Finland	0.02	0.03	0.03	0.04	2.54	2.48	2.48	2.43	0.06	0.06	0.06	0.09	0.02	37.10	0.02	37.10
United Kingdom	0.01	0.01	0.01	0.01	6.40	6.20	6.00	6.00	0.03	0.03	0.03	0.03	0.00	0.00	0.00	-3.23
Romania	0.01	0.02	0.02	0.02	2.69	2.06	2.78	2.50	0.04	0.03	0.05	0.04	-0.01	-20.00	0.01	21.21
Greece	0.02	0.02	0.02	0.02	1.83	1.83	1.83	1.83	0.03	0.03	0.03	0.03	0.00	0.00	0.00	0.00
Portugal	0.02	0.02	0.02	0.02	1.10	0.89	1.11	1.00	0.02	0.02	0.02	0.02	0.00	-9.52	0.00	11.76
Russia	2.20	2.15	1.80	1.80	2.05	2.00	2.00	1.83	4.50	4.30	3.60	3.30	-0.30	-8.33	-1.00	-23.26
Belarus	0.54	0.60	0.52	0.52	2.78	2.83	2.69	2.69	1.50	1.70	1.40	1.40	0.00	0.00	-0.30	-17.65
Ukraine	0.45	0.46	0.30	0.30	2.33	2.07	2.00	2.00	1.05	0.95	0.60	0.60	0.00	0.00	-0.35	-36.84
Canada	0.13	0.12	0.08	0.08	2.39	2.33	2.38	2.38	0.32	0.28	0.19	0.19	0.00	0.00	-0.09	-32.14
Turkey	0.13	0.13	0.13	0.13	1.92	2.08	2.08	2.08	0.25	0.27	0.27	0.27	0.00	0.00	0.00	0.00
Argentina	0.05	0.05	0.04	0.04	1.15	1.15	1.29	1.29	0.06	0.06	0.05	0.05	0.00	0.00	-0.01	-18.18
Kazakhstan	0.07	0.07	0.07	0.07	0.71	0.71	0.71	0.71	0.05	0.05	0.05	0.05	0.00	0.00	0.00	0.00
Australia	0.04	0.04	0.04	0.04	0.57	0.57	0.57	0.57	0.02	0.02	0.02	0.02	0.00	0.00	0.00	0.00
Switzerland	0.00	0.00	0.00	0.00	6.67	6.67	6.67	6.67	0.02	0.02	0.02	0.02	0.00	0.00	0.00	0.00
Others	0.06	0.06	0.06	0.06	1.69	1.38	1.38	1.38	0.11	0.09	0.09	0.09	0.00	0.00	0.00	0.00

World and Selected Countries and Regions

Table 08 Sorghum Area, Yield, and Production

Country / Region	Area (Million hectares)				Yield (Metric tons per hectare)				Production (Million metric tons)				Change in Production			
	Prel.		2010/11 Proj.		Prel.		2010/11 Proj.		Prel.		2010/11 Proj.		From last month		From last year	
	2008/09	2009/10	Jun	Jul	2008/09	2009/10	Jun	Jul	2008/09	2009/10	Jun	Jul	MMT	Percent	MMT	Percent
World	42.02	40.23	41.21	41.13	1.54	1.49	1.54	1.54	64.72	59.94	63.43	63.31	-0.11	-0.18	3.37	5.62
United States	2.94	2.23	2.18	2.10	4.08	4.35	4.14	4.24	12.00	9.73	9.02	8.89	-0.13	-1.41	-0.84	-8.61
Total Foreign	39.08	38.00	39.03	39.04	1.35	1.32	1.39	1.39	52.72	50.22	54.41	54.42	0.01	0.02	4.21	8.38
Sub-Saharan Africa																
Nigeria	7.40	7.50	7.60	7.60	1.49	1.53	1.54	1.54	11.00	11.50	11.70	11.70	0.00	0.00	0.20	1.74
Sudan	6.40	6.00	6.20	6.20	0.66	0.44	0.65	0.65	4.19	2.63	4.00	4.00	0.00	0.00	1.37	52.09
Ethiopia	1.55	1.55	1.55	1.55	1.69	1.34	1.68	1.68	2.62	2.08	2.60	2.60	0.00	0.00	0.52	24.76
Burkina	1.62	1.62	1.62	1.62	1.16	1.04	1.11	1.11	1.88	1.68	1.80	1.80	0.00	0.00	0.12	6.89
Tanzania	0.90	0.90	0.90	0.90	0.78	0.69	0.94	0.94	0.70	0.62	0.85	0.85	0.00	0.00	0.23	37.10
Niger	1.50	1.50	1.50	1.50	0.81	0.49	0.60	0.60	1.21	0.74	0.90	0.90	0.00	0.00	0.16	21.79
Uganda	0.31	0.31	0.31	0.31	1.48	1.48	1.58	1.58	0.46	0.46	0.49	0.49	0.00	0.00	0.03	6.52
Mozambique	0.50	0.50	0.45	0.45	0.76	0.76	0.78	0.78	0.38	0.38	0.35	0.35	0.00	0.00	-0.03	-7.41
Ghana	0.34	0.34	0.34	0.34	0.81	0.81	0.81	0.81	0.28	0.28	0.28	0.28	0.00	0.00	0.00	0.00
South Africa	0.09	0.09	0.09	0.09	3.26	2.91	2.56	2.56	0.28	0.25	0.23	0.23	0.00	0.00	-0.02	-9.09
South Asia																
India	7.70	7.00	7.50	7.50	0.95	0.97	1.00	1.00	7.31	6.77	7.50	7.50	0.00	0.00	0.73	10.78
Pakistan	0.24	0.24	0.24	0.24	0.60	0.60	0.60	0.60	0.15	0.15	0.15	0.15	0.00	0.00	0.00	0.00
South America																
Argentina	0.45	0.70	0.80	0.80	3.69	5.50	4.75	4.75	1.66	3.85	3.80	3.80	0.00	0.00	-0.05	-1.30
Brazil	0.85	0.78	0.85	0.85	2.26	2.34	2.35	2.35	1.91	1.83	2.00	2.00	0.00	0.00	0.18	9.59
Mexico	1.89	1.80	1.85	1.85	3.74	3.61	3.78	3.78	7.07	6.50	7.00	7.00	0.00	0.00	0.50	7.69
China	0.49	0.45	0.43	0.43	3.75	3.67	3.95	3.95	1.84	1.65	1.70	1.70	0.00	0.00	0.05	3.03
Australia	0.77	0.55	0.60	0.60	3.51	2.94	2.83	2.83	2.69	1.60	1.70	1.70	0.00	0.00	0.10	6.25
Egypt	0.16	0.16	0.16	0.16	5.63	5.63	5.63	5.63	0.90	0.90	0.90	0.90	0.00	0.00	0.00	0.00
EU-27	0.10	0.12	0.11	0.12	5.38	5.17	5.48	5.45	0.52	0.62	0.62	0.63	0.01	2.10	0.02	2.76
France	0.04	0.06	0.05	0.05	6.24	5.34	6.00	6.04	0.23	0.31	0.30	0.32	0.02	6.67	0.01	3.23
Italy	0.04	0.04	0.04	0.04	5.77	6.08	6.25	6.25	0.23	0.24	0.25	0.25	0.00	0.00	0.01	2.88
Others	5.84	5.90	5.93	5.93	0.98	0.97	0.99	0.99	5.69	5.74	5.85	5.85	0.00	0.00	0.11	1.95

World and Selected Countries and Regions

Table 09 Rice Area, Yield, and Production
World and Selected Countries and Regions

Country / Region	Area (Million hectares)				Yield (Metric tons per hectare)				Production (Million metric tons)				Change in Production			
	Prel.		2010/11 Proj.		Prel.		2010/11 Proj.		Prel.		2010/11 Proj.		From last month		From last year	
	2008/09	2009/10	Jun	Jul	2008/09	2009/10	Jun	Jul	2008/09	2009/10	Jun	Jul	MMT	Percent	MMT	Percent
World	157.83	155.08	160.02	160.04	4.25	4.25	4.30	4.30	448.03	440.59	459.44	459.28	-0.16	-0.04	18.69	4.24
United States	1.20	1.26	1.37	1.41	7.68	7.94	8.07	8.02	6.40	6.92	7.62	7.81	0.19	2.47	0.89	12.90
Total Foreign	156.63	153.83	158.65	158.63	4.22	4.22	4.27	4.26	441.63	433.67	451.82	451.47	-0.35	-0.08	17.80	4.10
East Asia																
China	29.24	29.68	29.80	29.80	6.56	6.59	6.59	6.59	134.33	137.00	137.50	137.50	0.00	0.00	0.50	0.36
Japan	1.63	1.62	1.62	1.62	6.78	6.52	6.66	6.66	8.03	7.71	7.85	7.85	0.00	0.00	0.14	1.80
Korea, South	0.94	0.92	0.90	0.90	6.99	7.19	6.91	6.91	4.84	4.92	4.60	4.60	0.00	0.00	-0.32	-6.43
Korea, North	0.59	0.59	0.59	0.59	4.89	5.02	5.05	5.05	1.86	1.91	1.92	1.92	0.00	0.00	0.01	0.52
South Asia																
India	45.40	41.00	45.00	45.00	3.28	3.20	3.30	3.30	99.18	87.50	99.00	99.00	0.00	0.00	11.50	13.14
Bangladesh	11.10	11.60	11.70	11.70	4.19	3.94	4.14	4.14	31.00	30.50	32.30	32.30	0.00	0.00	1.80	5.90
Pakistan	2.91	2.80	2.80	2.80	3.45	3.48	3.48	3.48	6.70	6.50	6.50	6.50	0.00	0.00	0.00	0.00
Southeast Asia																
Indonesia	12.17	12.00	12.20	12.20	4.88	5.01	5.08	5.08	38.30	38.80	40.00	40.00	0.00	0.00	1.20	3.09
Vietnam	7.33	7.37	7.35	7.35	5.30	5.29	5.39	5.39	24.39	24.38	24.75	24.75	0.00	0.00	0.37	1.52
Thailand	10.80	10.94	11.00	11.00	2.78	2.81	2.84	2.84	19.85	20.30	20.60	20.60	0.00	0.00	0.30	1.48
Burma	6.70	7.00	7.10	7.10	2.61	2.61	2.67	2.67	10.15	10.60	11.00	11.00	0.00	0.00	0.40	3.80
Philippines	4.53	4.40	4.45	4.45	3.77	3.52	3.85	3.85	10.75	9.76	10.80	10.80	0.00	0.00	1.04	10.69
Cambodia	2.61	2.68	2.75	2.75	2.75	2.84	2.86	2.77	4.52	4.78	4.95	4.80	-0.15	-3.03	0.02	0.42
Laos	0.83	0.84	0.86	0.86	3.54	3.61	3.68	3.68	1.76	1.82	1.90	1.90	0.00	0.00	0.08	4.34
Malaysia	0.66	0.67	0.67	0.67	3.58	3.68	3.70	3.70	1.54	1.59	1.60	1.60	0.00	0.00	0.01	0.63
South America																
Brazil	2.91	2.80	2.85	2.85	4.33	4.11	4.33	4.33	8.57	7.82	8.40	8.40	0.00	0.00	0.58	7.42
Peru	0.38	0.40	0.39	0.39	7.35	7.40	7.44	7.44	1.93	2.06	1.98	1.98	0.00	0.00	-0.09	-4.17
Sub-Saharan Africa																
Nigeria	2.30	2.40	2.45	2.45	2.32	2.36	2.45	2.45	3.20	3.40	3.60	3.60	0.00	0.00	0.20	5.88
Madagascar	1.36	1.38	1.38	1.38	2.88	3.05	3.05	3.05	2.51	2.69	2.69	2.69	0.00	0.00	0.00	0.00
EU-27	0.41	0.46	0.47	0.47	6.16	6.81	6.73	6.73	1.62	1.98	2.01	2.01	0.00	0.00	0.03	1.31
Italy	0.22	0.24	0.24	0.24	5.99	6.65	6.66	6.66	0.82	0.96	0.98	0.98	0.00	0.00	0.01	1.35
Spain	0.10	0.12	0.13	0.13	6.63	7.55	7.31	7.31	0.45	0.63	0.65	0.65	0.00	0.00	0.02	2.54
Egypt	0.67	0.67	0.64	0.60	10.08	9.87	10.10	10.00	4.40	4.30	4.20	3.90	-0.30	-7.14	-0.40	-9.30
Iran	0.58	0.63	0.63	0.63	3.95	4.85	4.93	4.93	1.50	2.00	2.05	2.05	0.00	0.00	0.05	2.50
Others	10.59	10.99	11.07	11.09	3.01	2.98	3.00	3.01	20.70	21.35	21.63	21.73	0.10	0.46	0.37	1.75

Yield is on a rough basis, before the milling process
Production is on a milled basis, after the milling process

Table 10 Total Oilseed Area, Yield, and Production

World and Selected Countries and Regions

Country / Region	Area (Million hectares)				Yield (Metric tons per hectare)				Production (Million metric tons)				Change in Production			
	Prel.		2010/11 Proj.		Prel.		2010/11 Proj.		Prel.		2010/11 Proj.		From last month		From last year	
	2008/09	2009/10	Jun	Jul	2008/09	2009/10	Jun	Jul	2008/09	2009/10	Jun	Jul	MMT	Percent	MMT	Percent
World Total	--	--	--	--	--	--	--	--	396.58	441.18	440.22	440.74	0.51	0.12	-0.45	-0.10
Total Foreign	--	--	--	--	--	--	--	--	307.38	342.28	341.13	339.96	-1.17	-0.34	-2.32	-0.68
Oilseed, Copra	--	--	--	--	--	--	--	--	5.88	5.88	5.96	5.96	0.00	0.00	0.08	1.36
Oilseed, Palm Kernel	--	--	--	--	--	--	--	--	11.88	12.41	13.29	13.29	0.00	0.00	0.89	7.13
Major Oilseeds	202.28	204.75	209.54	210.29	1.87	2.07	2.01	2.00	378.82	422.90	420.98	421.49	0.51	0.12	-1.41	-0.33
United States	35.27	35.51	36.97	37.70	2.53	2.78	2.68	2.67	89.20	98.90	99.09	100.77	1.68	1.70	1.87	1.89
Foreign Oilseeds	167.01	169.23	172.56	172.59	1.73	1.91	1.87	1.86	289.62	324.00	321.88	320.71	-1.17	-0.36	-3.29	-1.01
South America	45.96	50.17	50.29	50.47	2.25	2.80	2.63	2.64	103.61	140.54	132.47	133.06	0.60	0.45	-7.48	-5.32
Brazil	22.73	24.50	24.49	24.68	2.65	2.92	2.75	2.75	60.25	71.43	67.37	67.97	0.60	0.88	-3.47	-4.85
Argentina	18.39	20.74	20.68	20.68	1.93	2.79	2.64	2.64	35.51	57.89	54.52	54.52	0.00	0.00	-3.38	-5.83
Paraguay	2.82	2.85	2.98	2.98	1.55	2.60	2.27	2.27	4.37	7.40	6.77	6.77	0.00	0.00	-0.63	-8.52
Bolivia	1.19	1.14	1.10	1.10	1.72	1.74	1.76	1.76	2.05	1.98	1.94	1.94	0.00	0.00	-0.04	-2.03
China	26.98	26.48	26.33	26.33	2.15	2.17	2.17	2.16	58.12	57.47	57.01	56.81	-0.20	-0.35	-0.66	-1.15
South Asia	37.55	37.16	38.10	38.10	1.01	0.98	1.04	1.04	37.91	36.54	39.57	39.57	0.00	0.00	3.03	8.29
India	33.50	33.01	33.75	33.75	0.97	0.94	1.00	1.00	32.65	30.97	33.70	33.70	0.00	0.00	2.73	8.81
Pakistan	3.73	3.83	4.03	4.03	1.34	1.39	1.39	1.39	5.01	5.31	5.61	5.61	0.00	0.00	0.30	5.65
EU-27	10.47	11.03	11.41	11.41	2.60	2.70	2.59	2.55	27.19	29.81	29.52	29.12	-0.40	-1.36	-0.69	-2.30
France	2.09	2.24	2.22	2.22	3.05	3.30	3.14	2.96	6.38	7.39	6.98	6.58	-0.40	-5.73	-0.81	-11.01
Germany	1.40	1.50	1.53	1.53	3.73	4.25	3.89	3.89	5.20	6.36	5.94	5.94	0.00	0.00	-0.42	-6.63
Poland	0.78	0.82	0.81	0.81	2.72	2.95	2.74	2.74	2.11	2.41	2.21	2.21	0.00	0.00	-0.20	-8.31
Romania	1.25	1.28	1.48	1.48	1.61	1.50	1.54	1.54	2.01	1.92	2.29	2.29	0.00	0.00	0.38	19.58
Hungary	0.83	0.82	0.84	0.84	2.67	2.32	2.38	2.38	2.21	1.91	1.98	1.98	0.00	0.00	0.08	3.98
United Kingdom	0.60	0.58	0.62	0.62	3.30	3.36	3.33	3.33	1.97	1.95	2.08	2.08	0.00	0.00	0.13	6.41
Former Soviet Union - 12	17.53	16.60	17.45	18.11	1.34	1.29	1.38	1.34	23.56	21.44	24.00	24.29	0.29	1.19	2.85	13.29
Russia	7.34	6.95	7.58	7.73	1.21	1.16	1.22	1.22	8.85	8.03	9.26	9.41	0.15	1.62	1.38	17.13
Ukraine	6.45	5.98	6.20	6.20	1.66	1.58	1.69	1.69	10.70	9.45	10.50	10.50	0.00	0.00	1.05	11.11
Uzbekistan	1.42	1.30	1.30	1.30	1.27	1.21	1.38	1.48	1.80	1.58	1.80	1.93	0.13	6.94	0.35	22.22
Canada	7.76	7.56	8.28	7.32	2.07	2.04	1.90	1.94	16.09	15.44	15.77	14.22	-1.55	-9.83	-1.23	-7.93
Africa	12.42	12.33	12.53	12.53	0.87	0.86	0.87	0.87	10.81	10.57	10.86	10.86	0.00	0.00	0.29	2.72
Nigeria	2.08	2.08	2.08	2.08	1.05	1.05	1.05	1.05	2.18	2.19	2.19	2.19	0.00	0.00	0.00	0.00
Southeast Asia	3.70	3.73	3.74	3.74	1.34	1.34	1.34	1.34	4.94	4.98	4.99	4.99	0.00	0.00	0.01	0.20
Indonesia	1.38	1.38	1.38	1.38	1.50	1.49	1.49	1.49	2.06	2.06	2.06	2.06	0.00	0.00	0.00	0.00
Australia	1.98	1.68	1.82	1.97	1.24	1.52	1.55	1.49	2.45	2.56	2.83	2.93	0.10	3.53	0.38	14.71
Others	2.66	2.51	2.61	2.61	1.86	1.86	1.86	1.86	4.95	4.66	4.87	4.87	0.00	0.00	0.21	4.60

World Total and Total Foreign: (Major Oilseeds plus copra and palm kernel)

Major Oilseeds: (soybeans, sunflowerseeds, peanuts(inshell), cottonseed and rapeseed)

Table 11 Soybean Area, Yield, and Production

Country / Region	Area (Million hectares)				Yield (Metric tons per hectare)				Production (Million metric tons)				Change in Production			
	Prel.		2010/11 Proj.		Prel.		2010/11 Proj.		Prel.		2010/11 Proj.		From last month		From last year	
	2008/09	2009/10	Jun	Jul	2008/09	2009/10	Jun	Jul	2008/09	2009/10	Jun	Jul	MMT	Percent	MMT	Percent
World	96.40	101.92	101.37	101.97	2.20	2.55	2.47	2.46	211.96	259.70	249.93	251.29	1.35	0.54	-8.42	-3.24
United States	30.22	30.91	31.20	31.56	2.67	2.96	2.89	2.88	80.75	91.42	90.08	91.04	0.95	1.06	-0.38	-0.42
Total Foreign	66.18	71.01	70.17	70.41	1.98	2.37	2.28	2.28	131.22	168.29	159.85	160.25	0.40	0.25	-8.03	-4.77
South America																
Brazil	21.70	23.50	23.50	23.50	2.66	2.94	2.77	2.77	57.80	69.00	65.00	65.00	0.00	0.00	-4.00	-5.80
Argentina	16.00	18.60	18.00	18.00	2.00	2.93	2.78	2.78	32.00	54.50	50.00	50.00	0.00	0.00	-4.50	-8.26
Paraguay	2.55	2.68	2.75	2.75	1.57	2.69	2.36	2.36	4.00	7.20	6.50	6.50	0.00	0.00	-0.70	-9.72
Bolivia	0.89	0.90	0.85	0.85	1.80	1.85	1.86	1.86	1.60	1.67	1.58	1.58	0.00	0.00	-0.09	-5.11
Uruguay	0.65	0.80	0.90	0.90	1.80	2.00	1.80	1.80	1.17	1.60	1.62	1.62	0.00	0.00	0.02	1.25
East Asia																
China	9.13	8.80	8.60	8.60	1.70	1.67	1.70	1.70	15.54	14.70	14.60	14.60	0.00	0.00	-0.10	-0.68
Korea, South	0.08	0.08	0.08	0.08	1.76	1.71	1.81	1.81	0.13	0.13	0.15	0.15	0.00	0.00	0.02	11.54
Korea, North	0.14	0.14	0.14	0.14	1.15	1.08	1.19	1.19	0.16	0.15	0.16	0.16	0.00	0.00	0.01	6.67
Japan	0.15	0.15	0.15	0.15	1.78	1.57	1.55	1.55	0.26	0.23	0.23	0.23	0.00	0.00	0.00	-0.88
India	9.60	9.60	9.00	9.00	0.95	0.91	0.98	0.98	9.10	8.75	8.80	8.80	0.00	0.00	0.05	0.57
Canada	1.20	1.38	1.41	1.50	2.79	2.54	2.59	2.60	3.34	3.50	3.65	3.90	0.25	6.85	0.40	11.43
Former Soviet Union - 12																
Ukraine	0.55	0.63	0.90	0.90	1.45	1.68	1.67	1.67	0.80	1.05	1.50	1.50	0.00	0.00	0.45	42.86
Russia	0.71	0.79	0.85	1.00	1.05	1.19	1.18	1.15	0.74	0.94	1.00	1.15	0.15	15.00	0.21	22.08
Southeast Asia																
Indonesia	0.62	0.62	0.62	0.62	1.29	1.29	1.29	1.29	0.80	0.80	0.80	0.80	0.00	0.00	0.00	0.00
Vietnam	0.19	0.20	0.20	0.20	1.40	1.50	1.50	1.50	0.27	0.30	0.30	0.30	0.00	0.00	0.00	0.00
Thailand	0.12	0.11	0.12	0.12	1.50	1.55	1.50	1.50	0.18	0.17	0.18	0.18	0.00	0.00	0.01	5.88
Burma	0.16	0.16	0.16	0.16	1.22	1.19	1.19	1.19	0.19	0.19	0.19	0.19	0.00	0.00	0.00	0.00
EU-27	0.24	0.30	0.35	0.35	2.70	2.84	2.86	2.86	0.64	0.86	1.00	1.00	0.00	0.00	0.14	15.87
Italy	0.11	0.14	0.17	0.17	3.20	3.50	3.52	3.52	0.35	0.49	0.59	0.59	0.00	0.00	0.10	20.12
France	0.02	0.04	0.05	0.05	2.82	2.59	2.60	2.60	0.06	0.11	0.13	0.13	0.00	0.00	0.02	14.04
Sub-Saharan Africa																
South Africa	0.24	0.31	0.32	0.32	2.17	1.89	1.83	1.83	0.52	0.59	0.58	0.58	0.00	0.00	-0.01	-2.04
Nigeria	0.44	0.44	0.44	0.44	1.02	1.02	1.02	1.02	0.45	0.45	0.45	0.45	0.00	0.00	0.00	0.00
Uganda	0.15	0.15	0.15	0.15	1.10	1.10	1.10	1.10	0.17	0.17	0.17	0.17	0.00	0.00	0.00	0.00
Serbia	0.15	0.15	0.15	0.15	2.41	2.41	2.41	2.41	0.35	0.35	0.35	0.35	0.00	0.00	0.00	0.00
Mexico	0.08	0.07	0.07	0.07	2.01	1.50	1.50	1.50	0.15	0.11	0.11	0.11	0.00	0.00	0.00	0.00
Iran	0.12	0.12	0.12	0.12	1.82	2.17	2.26	2.26	0.21	0.25	0.26	0.26	0.00	0.00	0.01	4.00
Others	0.35	0.35	0.37	0.37	1.85	1.84	1.90	1.90	0.65	0.64	0.70	0.70	0.00	0.00	0.06	8.59

World and Selected Countries and Regions

Table 12 Cottonseed Area, Yield, and Production

Country / Region	Area (Million hectares)				Yield (Metric tons per hectare)				Production (Million metric tons)				Change in Production			
	Prel.		2010/11 Proj.		Prel.		2010/11 Proj.		Prel.		2010/11 Proj.		From last month		From last year	
	2008/09	2009/10	Jun	Jul	2008/09	2009/10	Jun	Jul	2008/09	2009/10	Jun	Jul	MMT	Percent	MMT	Percent
World	29.99	29.77	31.29	31.71	1.38	1.34	1.37	1.38	41.32	39.86	42.73	43.88	1.14	2.67	4.01	10.06
United States	3.06	3.05	3.98	4.21	1.27	1.24	1.28	1.31	3.90	3.76	5.09	5.53	0.44	8.57	1.76	46.79
Total Foreign	26.93	26.73	27.31	27.49	1.39	1.35	1.38	1.39	37.42	36.10	37.65	38.35	0.71	1.88	2.25	6.24
China	6.05	5.30	5.40	5.40	2.38	2.40	2.39	2.39	14.40	12.74	12.93	12.93	0.00	0.00	0.19	1.49
South Asia																
India	9.37	10.26	10.30	10.30	1.02	0.98	1.03	1.03	9.60	10.10	10.60	10.60	0.00	0.00	0.50	4.95
Pakistan	2.90	3.00	3.20	3.20	1.38	1.43	1.44	1.44	4.00	4.30	4.60	4.60	0.00	0.00	0.30	6.98
Former Soviet Union - 12																
Uzbekistan	1.42	1.30	1.30	1.30	1.27	1.21	1.38	1.48	1.80	1.58	1.80	1.93	0.13	6.94	0.35	22.22
Turkmenistan	0.60	0.55	0.58	0.58	0.88	0.89	0.89	0.89	0.53	0.49	0.51	0.51	0.00	0.00	0.02	4.08
Tajikistan	0.23	0.17	0.17	0.17	0.83	0.88	0.97	0.88	0.19	0.15	0.17	0.15	-0.02	-9.09	0.00	0.00
Kazakhstan	0.16	0.12	0.13	0.13	1.06	1.25	1.04	1.04	0.17	0.15	0.14	0.14	0.00	0.00	-0.02	-10.00
South America																
Brazil	0.84	0.84	0.82	1.00	2.42	2.51	2.47	2.61	2.04	2.10	2.01	2.61	0.60	29.65	0.51	24.10
Argentina	0.30	0.43	0.45	0.45	0.69	0.70	0.74	0.74	0.21	0.30	0.34	0.34	0.00	0.00	0.04	11.67
Middle East																
Turkey	0.34	0.28	0.33	0.33	2.06	2.14	2.03	2.03	0.70	0.60	0.67	0.67	0.00	0.00	0.07	11.67
Syria	0.18	0.17	0.17	0.17	2.73	2.75	2.75	2.75	0.48	0.45	0.45	0.45	0.00	0.00	0.00	0.00
Iran	0.10	0.09	0.10	0.10	0.97	0.99	1.00	1.00	0.10	0.09	0.10	0.10	0.00	0.00	0.01	12.36
Australia	0.16	0.20	0.25	0.25	2.44	2.50	2.52	2.52	0.40	0.50	0.63	0.63	0.00	0.00	0.13	26.00
EU-27	0.30	0.29	0.31	0.31	1.57	1.59	1.51	1.51	0.48	0.46	0.47	0.47	0.00	0.00	0.01	1.73
Greece	0.25	0.24	0.25	0.25	1.78	1.79	1.68	1.68	0.45	0.42	0.42	0.42	0.00	0.00	0.00	0.00
Spain	0.05	0.06	0.06	0.06	0.57	0.75	0.81	0.81	0.03	0.04	0.05	0.05	0.00	0.00	0.01	19.05
Sub-Saharan Africa																
Burkina	0.44	0.45	0.45	0.45	0.53	0.46	0.54	0.54	0.24	0.21	0.24	0.24	0.00	0.00	0.04	16.91
Mali	0.19	0.20	0.20	0.20	0.52	0.60	0.57	0.57	0.10	0.12	0.11	0.11	0.00	0.00	-0.01	-5.83
Cameroon	0.16	0.15	0.15	0.15	0.78	0.75	0.83	0.83	0.13	0.11	0.13	0.13	0.00	0.00	0.01	11.61
Sudan	0.09	0.04	0.09	0.09	1.08	0.83	0.96	0.96	0.10	0.03	0.08	0.08	0.00	0.00	0.05	148.48
Zimbabwe	0.37	0.38	0.38	0.38	0.43	0.45	0.46	0.46	0.16	0.17	0.18	0.18	0.00	0.00	0.00	2.34
Nigeria	0.40	0.40	0.40	0.40	0.47	0.49	0.49	0.49	0.18	0.19	0.19	0.19	0.00	0.00	0.00	0.00
Benin	0.21	0.18	0.18	0.18	0.65	0.64	0.64	0.64	0.13	0.12	0.12	0.12	0.00	0.00	0.00	0.00
Uganda	0.27	0.27	0.27	0.27	0.32	0.27	0.32	0.32	0.09	0.07	0.09	0.09	0.00	0.00	0.01	17.57
Egypt	0.13	0.12	0.12	0.12	1.17	1.20	1.20	1.20	0.15	0.14	0.14	0.14	0.00	0.00	0.00	0.00
Mexico	0.12	0.12	0.12	0.12	1.85	1.85	1.85	1.85	0.23	0.23	0.23	0.23	0.00	0.00	0.00	0.00
Burma	0.30	0.30	0.30	0.30	0.63	0.63	0.63	0.63	0.19	0.19	0.19	0.19	0.00	0.00	0.00	0.00
Others	1.30	1.13	1.16	1.16	0.49	0.45	0.47	0.47	0.64	0.50	0.54	0.54	0.00	0.00	0.04	7.75

World and Selected Countries and Regions

Table 13 Peanut Area, Yield, and Production

Country / Region	Area (Million hectares)				Yield (Metric tons per hectare)				Production (Million metric tons)				Change in Production			
	Prel.		2010/11 Proj.		Prel.		2010/11 Proj.		Prel.		2010/11 Proj.		From last month		From last year	
	2008/09	2009/10	Jun	Jul	2008/09	2009/10	Jun	Jul	2008/09	2009/10	Jun	Jul	MMT	Percent	MMT	Percent
World	21.12	20.06	21.20	21.23	1.63	1.64	1.63	1.64	34.47	32.92	34.63	34.76	0.13	0.37	1.83	5.57
United States	0.61	0.44	0.48	0.51	3.84	3.83	3.76	3.76	2.34	1.67	1.79	1.92	0.13	7.10	0.24	14.52
Total Foreign	20.51	19.62	20.72	20.72	1.57	1.59	1.58	1.58	32.13	31.25	32.84	32.84	0.00	0.00	1.59	5.09
China	4.25	4.26	4.30	4.30	3.36	3.45	3.44	3.44	14.29	14.70	14.80	14.80	0.00	0.00	0.10	0.68
South Asia																
India	6.40	5.30	6.35	6.35	0.98	0.92	1.01	1.01	6.25	4.90	6.40	6.40	0.00	0.00	1.50	30.61
Pakistan	0.11	0.11	0.11	0.11	0.90	0.90	0.90	0.90	0.10	0.10	0.10	0.10	0.00	0.00	0.00	0.00
Sub-Saharan Africa	7.36	7.61	7.61	7.61	0.92	0.91	0.91	0.91	6.75	6.92	6.91	6.91	0.00	0.00	-0.02	-0.22
Nigeria	1.25	1.25	1.25	1.25	1.24	1.24	1.24	1.24	1.55	1.55	1.55	1.55	0.00	0.00	0.00	0.00
Senegal	0.59	0.83	0.83	0.83	0.77	0.75	0.75	0.75	0.45	0.63	0.63	0.63	0.00	0.00	0.00	0.00
Chad	0.35	0.35	0.35	0.35	1.32	1.32	1.32	1.32	0.47	0.47	0.47	0.47	0.00	0.00	0.00	0.00
Ghana	0.47	0.47	0.47	0.47	0.94	0.94	0.94	0.94	0.44	0.44	0.44	0.44	0.00	0.00	0.00	0.00
Sudan	1.00	1.00	1.00	1.00	0.85	0.85	0.85	0.85	0.85	0.85	0.85	0.85	0.00	0.00	0.00	0.00
Congo (Kinshasa)	0.48	0.48	0.48	0.48	0.78	0.78	0.78	0.78	0.37	0.37	0.37	0.37	0.00	0.00	0.00	0.00
Burkina	0.35	0.35	0.35	0.35	1.01	1.01	1.01	1.01	0.35	0.35	0.35	0.35	0.00	0.00	0.00	0.00
Guinea	0.21	0.21	0.21	0.21	1.24	1.24	1.24	1.24	0.26	0.26	0.26	0.26	0.00	0.00	0.00	0.00
Cameroon	0.31	0.31	0.31	0.31	0.77	0.77	0.77	0.77	0.24	0.24	0.24	0.24	0.00	0.00	0.00	0.00
Mali	0.25	0.25	0.25	0.25	1.10	1.10	1.10	1.10	0.28	0.28	0.28	0.28	0.00	0.00	0.00	0.00
Malawi	0.22	0.22	0.22	0.22	1.20	1.20	1.20	1.20	0.27	0.27	0.27	0.27	0.00	0.00	0.00	0.00
Cote d'Ivoire	0.15	0.15	0.15	0.15	1.00	1.00	1.00	1.00	0.15	0.15	0.15	0.15	0.00	0.00	0.00	0.00
Uganda	0.21	0.21	0.21	0.21	0.70	0.70	0.70	0.70	0.15	0.15	0.15	0.15	0.00	0.00	0.00	0.00
Central African Republic	0.13	0.13	0.13	0.13	1.12	1.12	1.12	1.12	0.14	0.14	0.14	0.14	0.00	0.00	0.00	0.00
Benin	0.16	0.16	0.16	0.16	0.81	0.81	0.81	0.81	0.13	0.13	0.13	0.13	0.00	0.00	0.00	0.00
Mozambique	0.29	0.29	0.29	0.29	0.38	0.38	0.38	0.38	0.11	0.11	0.11	0.11	0.00	0.00	0.00	0.00
Niger	0.26	0.26	0.26	0.26	0.42	0.42	0.42	0.42	0.11	0.11	0.11	0.11	0.00	0.00	0.00	0.00
South Africa	0.06	0.06	0.06	0.06	2.33	2.28	2.02	2.02	0.13	0.13	0.12	0.12	0.00	0.00	-0.02	-11.54
Southeast Asia																
Indonesia	0.75	0.75	0.75	0.75	1.67	1.67	1.67	1.67	1.25	1.25	1.25	1.25	0.00	0.00	0.00	0.00
Burma	0.65	0.67	0.67	0.67	1.54	1.49	1.49	1.49	1.00	1.00	1.00	1.00	0.00	0.00	0.00	0.00
Vietnam	0.26	0.26	0.26	0.26	2.09	2.12	2.12	2.12	0.53	0.55	0.55	0.55	0.00	0.00	0.00	0.00
Thailand	0.07	0.07	0.07	0.07	1.77	1.77	1.77	1.77	0.12	0.12	0.12	0.12	0.00	0.00	0.00	0.00
South America																
Argentina	0.28	0.22	0.23	0.23	3.13	3.59	3.47	3.47	0.86	0.79	0.78	0.78	0.00	0.00	-0.01	-1.27
Brazil	0.12	0.10	0.10	0.10	2.62	2.47	2.50	2.50	0.30	0.24	0.25	0.25	0.00	0.00	0.02	6.38
Egypt	0.06	0.06	0.06	0.06	3.17	3.17	3.17	3.17	0.19	0.19	0.19	0.19	0.00	0.00	0.00	0.00
Mexico	0.05	0.05	0.05	0.05	1.56	1.56	1.56	1.56	0.07	0.07	0.07	0.07	0.00	0.00	0.00	0.00
Others	0.19	0.19	0.19	0.19	2.34	2.34	2.34	2.34	0.43	0.43	0.43	0.43	0.00	0.00	0.00	0.00

World and Selected Countries and Regions

Table 14 Sunflowerseed Area, Yield, and Production

Country / Region	Area (Million hectares)				Yield (Metric tons per hectare)				Production (Million metric tons)				Change in Production			
	Prel.		2010/11 Proj.		Prel.		2010/11 Proj.		Prel.		2010/11 Proj.		From last month		From last year	
	2008/09	2009/10	Jun	Jul	2008/09	2009/10	Jun	Jul	2008/09	2009/10	Jun	Jul	MMT	Percent	MMT	Percent
World	23.68	22.26	23.65	24.00	1.40	1.37	1.43	1.41	33.22	30.48	33.78	33.74	-0.04	-0.11	3.26	10.70
United States	0.97	0.79	0.84	0.81	1.60	1.74	1.61	1.61	1.55	1.38	1.35	1.31	-0.04	-2.82	-0.07	-4.94
Total Foreign	22.71	21.47	22.81	23.19	1.39	1.36	1.42	1.40	31.67	29.10	32.43	32.43	0.00	0.00	3.33	11.44
Former Soviet Union - 12																
Russia	6.00	5.60	6.10	6.10	1.23	1.15	1.23	1.23	7.35	6.43	7.50	7.50	0.00	0.00	1.08	16.73
Ukraine	4.50	4.35	4.30	4.30	1.56	1.49	1.63	1.63	7.00	6.50	7.00	7.00	0.00	0.00	0.50	7.69
Moldova	0.23	0.25	0.25	0.25	1.63	1.60	1.60	1.60	0.37	0.40	0.40	0.40	0.00	0.00	0.00	0.00
Kazakhstan	0.58	0.72	0.72	1.10	0.32	0.51	0.63	0.41	0.19	0.37	0.45	0.45	0.00	0.00	0.08	22.28
South America																
Argentina	1.81	1.49	2.00	2.00	1.35	1.55	1.70	1.70	2.44	2.30	3.40	3.40	0.00	0.00	1.10	47.83
Uruguay	0.06	0.02	0.02	0.02	0.93	1.53	1.60	1.60	0.05	0.02	0.03	0.03	0.00	0.00	0.01	39.13
Bolivia	0.30	0.24	0.25	0.25	1.48	1.32	1.42	1.42	0.45	0.31	0.36	0.36	0.00	0.00	0.05	14.52
China	0.96	0.92	0.93	0.93	1.86	1.77	1.81	1.81	1.79	1.63	1.68	1.68	0.00	0.00	0.05	3.07
EU-27	3.75	3.94	3.95	3.95	1.89	1.79	1.78	1.78	7.08	7.03	7.05	7.05	0.00	0.00	0.02	0.33
France	0.63	0.72	0.70	0.70	2.51	2.33	2.36	2.36	1.58	1.68	1.65	1.65	0.00	0.00	-0.03	-1.79
Hungary	0.55	0.53	0.53	0.53	2.71	2.35	2.35	2.35	1.49	1.26	1.23	1.23	0.00	0.00	-0.02	-1.67
Spain	0.73	0.85	0.87	0.87	1.13	1.03	1.06	1.06	0.82	0.88	0.93	0.93	0.00	0.00	0.05	5.59
Italy	0.11	0.13	0.14	0.14	2.29	2.23	2.22	2.22	0.26	0.28	0.30	0.30	0.00	0.00	0.02	7.53
Slovakia	0.08	0.08	0.08	0.08	2.56	2.40	2.50	2.50	0.19	0.20	0.21	0.21	0.00	0.00	0.01	3.96
South Asia																
India	1.53	1.40	1.50	1.50	0.65	0.59	0.60	0.60	1.00	0.82	0.90	0.90	0.00	0.00	0.08	9.76
Pakistan	0.45	0.45	0.45	0.45	1.52	1.52	1.52	1.52	0.69	0.69	0.69	0.69	0.00	0.00	0.00	0.00
Turkey	0.50	0.46	0.50	0.50	1.66	1.74	1.75	1.75	0.83	0.80	0.88	0.88	0.00	0.00	0.08	9.38
South Africa	0.64	0.40	0.55	0.55	1.26	1.25	1.27	1.27	0.80	0.50	0.70	0.70	0.00	0.00	0.20	40.00
Burma	0.55	0.55	0.55	0.55	0.67	0.67	0.67	0.67	0.37	0.37	0.37	0.37	0.00	0.00	0.00	0.00
Serbia	0.20	0.17	0.17	0.17	2.45	2.35	2.35	2.35	0.49	0.40	0.40	0.40	0.00	0.00	0.00	0.00
Canada	0.07	0.07	0.07	0.07	1.62	1.60	1.60	1.60	0.11	0.12	0.12	0.12	0.00	0.00	0.00	0.00
Australia	0.06	0.04	0.06	0.06	1.27	1.29	1.27	1.27	0.07	0.05	0.07	0.07	0.00	0.00	0.03	55.56
Others	0.53	0.41	0.44	0.44	1.13	0.93	1.02	1.02	0.59	0.38	0.45	0.45	0.00	0.00	0.06	16.71

World and Selected Countries and Regions

Table 15 Rapeseed Area, Yield, and Production

Country / Region	Area (Million hectares)				Yield (Metric tons per hectare)				Production (Million metric tons)				Change in Production			
	Prel.		2010/11 Proj.		Prel.		2010/11 Proj.		Prel.		2010/11 Proj.		From last month		From last year	
	2008/09	2009/10	Jun	Jul	2008/09	2009/10	Jun	Jul	2008/09	2009/10	Jun	Jul	MMT	Percent	MMT	Percent
World	31.09	30.74	32.04	31.39	1.86	1.95	1.87	1.84	57.84	59.93	59.90	57.83	-2.07	-3.46	-2.10	-3.51
United States	0.40	0.33	0.48	0.60	1.64	2.03	1.64	1.64	0.66	0.67	0.79	0.99	0.20	25.86	0.32	47.68
Total Foreign	30.69	30.41	31.56	30.78	1.86	1.95	1.87	1.85	57.18	59.26	59.12	56.84	-2.28	-3.85	-2.42	-4.09
EU-27	6.18	6.50	6.80	6.80	3.07	3.30	3.09	3.03	19.00	21.45	21.00	20.60	-0.40	-1.90	-0.85	-3.98
Germany	1.37	1.47	1.50	1.50	3.76	4.29	3.93	3.93	5.16	6.31	5.89	5.89	0.00	0.00	-0.42	-6.58
France	1.44	1.48	1.47	1.47	3.29	3.79	3.54	3.27	4.74	5.60	5.20	4.80	-0.40	-7.69	-0.80	-14.29
United Kingdom	0.60	0.58	0.62	0.62	3.30	3.36	3.33	3.33	1.97	1.95	2.08	2.08	0.00	0.00	0.13	6.41
Poland	0.77	0.81	0.80	0.80	2.73	2.96	2.75	2.75	2.11	2.40	2.20	2.20	0.00	0.00	-0.20	-8.33
Czech Republic	0.36	0.36	0.33	0.33	2.94	3.20	3.18	3.18	1.05	1.14	1.05	1.05	0.00	0.00	-0.09	-7.49
Denmark	0.17	0.16	0.15	0.15	3.66	3.90	3.53	3.53	0.63	0.64	0.53	0.53	0.00	0.00	-0.11	-16.54
Hungary	0.25	0.26	0.28	0.28	2.62	2.23	2.45	2.45	0.66	0.58	0.69	0.69	0.00	0.00	0.10	17.90
Romania	0.39	0.44	0.62	0.62	1.87	1.55	1.61	1.61	0.72	0.68	1.00	1.00	0.00	0.00	0.32	47.06
Slovakia	0.16	0.17	0.16	0.16	2.60	2.45	2.44	2.44	0.42	0.41	0.39	0.39	0.00	0.00	-0.02	-4.65
Sweden	0.09	0.10	0.11	0.11	2.85	2.99	2.95	2.95	0.26	0.30	0.31	0.31	0.00	0.00	0.01	3.68
Lithuania	0.16	0.19	0.20	0.20	2.04	2.17	2.10	2.10	0.33	0.42	0.42	0.42	0.00	0.00	0.00	0.96
Latvia	0.08	0.09	0.10	0.10	2.40	2.18	2.26	2.26	0.20	0.21	0.22	0.22	0.00	0.00	0.01	4.88
Austria	0.06	0.06	0.06	0.06	3.11	3.00	3.05	3.05	0.17	0.17	0.18	0.18	0.00	0.00	0.01	5.26
Finland	0.06	0.08	0.08	0.08	1.39	1.57	1.55	1.55	0.09	0.13	0.13	0.13	0.00	0.00	0.00	0.00
Estonia	0.08	0.08	0.08	0.08	1.42	1.65	1.42	1.42	0.11	0.13	0.11	0.11	0.00	0.00	-0.02	-13.95
China	6.59	7.20	7.10	7.10	1.84	1.90	1.83	1.80	12.10	13.70	13.00	12.80	-0.20	-1.54	-0.90	-6.57
South Asia																
India	6.60	6.45	6.60	6.60	1.02	0.99	1.06	1.06	6.70	6.40	7.00	7.00	0.00	0.00	0.60	9.38
Pakistan	0.27	0.27	0.27	0.27	0.83	0.85	0.85	0.85	0.23	0.23	0.23	0.23	0.00	0.00	0.00	0.00
Bangladesh	0.30	0.30	0.30	0.30	0.73	0.75	0.75	0.75	0.22	0.23	0.23	0.23	0.00	0.00	0.00	0.00
Canada	6.49	6.11	6.80	5.75	1.95	1.94	1.76	1.77	12.64	11.83	12.00	10.20	-1.80	-15.00	-1.63	-13.74
Australia	1.69	1.39	1.45	1.60	1.09	1.37	1.38	1.31	1.84	1.91	2.00	2.10	0.10	5.00	0.19	9.95
Former Soviet Union - 12																
Ukraine	1.40	1.00	1.00	1.00	2.07	1.90	2.00	2.00	2.90	1.90	2.00	2.00	0.00	0.00	0.10	5.26
Russia	0.63	0.56	0.63	0.63	1.20	1.20	1.21	1.21	0.75	0.67	0.76	0.76	0.00	0.00	0.09	13.94
Belarus	0.29	0.34	0.30	0.30	2.03	1.91	2.00	2.00	0.59	0.65	0.60	0.60	0.00	0.00	-0.05	-7.69
Paraguay	0.03	0.07	0.08	0.08	1.20	1.20	1.11	1.11	0.04	0.08	0.08	0.08	0.00	0.00	0.00	-1.19
Others	0.21	0.23	0.23	0.36	0.85	0.95	0.95	0.69	0.18	0.22	0.22	0.24	0.03	11.42	0.03	11.42

World and Selected Countries and Regions

Table 16 Copra, Palm Kernel, and Palm Oil Production

Country / Region	Production (Million metric tons)				Change in Production			
	2008/09	Prel.	2010/11 Proj.		From last month		From last year	
		2009/10	Jun	Jul	MMT	Percent	MMT	Percent
Oilseed, Copra								
Philippines	2.52	2.52	2.60	2.60	0.00	0.00	0.08	0.03
Indonesia	1.60	1.60	1.60	1.60	0.00	0.00	0.00	0.00
India	0.74	0.74	0.74	0.74	0.00	0.00	0.00	0.00
Vietnam	0.24	0.24	0.24	0.24	0.00	0.00	0.00	0.00
Mexico	0.23	0.23	0.23	0.23	0.00	0.00	0.00	0.00
Papua New Guinea	0.13	0.13	0.13	0.13	0.00	0.00	0.00	0.00
Thailand	0.07	0.07	0.07	0.07	0.00	0.00	0.00	0.00
Sri Lanka	0.07	0.07	0.07	0.07	0.00	0.00	0.00	0.00
Mozambique	0.05	0.05	0.05	0.05	0.00	0.00	0.00	0.00
Cote d'Ivoire	0.05	0.05	0.05	0.05	0.00	0.00	0.00	0.00
World	5.88	5.88	5.96	5.96	0.00	0.00	0.08	0.01
Oilseed, Palm Kernel								
Indonesia	5.47	5.75	6.50	6.50	0.00	0.00	0.75	0.13
Malaysia	4.44	4.70	4.83	4.83	0.00	0.00	0.12	0.03
Nigeria	0.67	0.67	0.67	0.67	0.00	0.00	0.00	0.00
Thailand	0.31	0.27	0.28	0.28	0.00	0.00	0.01	0.04
Colombia	0.20	0.20	0.20	0.20	0.00	0.00	0.00	0.00
Ecuador	0.11	0.12	0.12	0.12	0.00	0.00	0.00	0.00
Papua New Guinea	0.11	0.12	0.12	0.12	0.00	0.00	0.00	0.00
Cote d'Ivoire	0.08	0.08	0.08	0.08	0.00	0.00	0.00	0.00
Cameroon	0.07	0.07	0.07	0.07	0.00	0.00	0.00	0.00
Congo (Kinshasa)	0.06	0.06	0.06	0.06	0.00	0.00	0.00	0.00
World	11.88	12.41	13.29	13.29	0.00	0.00	0.89	0.07
Oil, Palm								
Indonesia	20.50	21.50	24.50	24.50	0.00	0.00	3.00	0.14
Malaysia	17.26	18.20	18.60	18.60	0.00	0.00	0.40	0.02
Thailand	1.54	1.35	1.50	1.50	0.00	0.00	0.16	0.12
Nigeria	0.85	0.85	0.85	0.85	0.00	0.00	0.00	0.00
Colombia	0.76	0.78	0.81	0.81	0.00	0.00	0.03	0.04
Ecuador	0.43	0.47	0.47	0.47	0.00	0.00	0.00	0.00
Papua New Guinea	0.40	0.44	0.44	0.44	0.00	0.00	0.00	0.00
Cote d'Ivoire	0.29	0.30	0.30	0.30	0.00	0.00	0.00	0.00
Honduras	0.25	0.25	0.25	0.25	0.00	0.00	0.00	0.00
Costa Rica	0.21	0.23	0.23	0.23	0.00	0.00	0.00	0.00
World	43.85	45.75	49.34	49.34	0.00	0.00	3.59	0.08

World and Selected Countries and Regions

Table 17 Cotton Area, Yield, and Production

Country / Region	Area (Million 1000 HA)				Yield (Kilograms per hectare)				Production (Million 480 lb. bales)				Change in Production			
	Prel.		2010/11 Proj.		Prel.		2010/11 Proj.		Prel.		2010/11 Proj.		From last month		From last year	
	2008/09	2009/10	Jun	Jul	2008/09	2009/10	Jun	Jul	2008/09	2009/10	Jun	Jul	MBales	Percent	MBales	Percent
World	61.46	30.32	32.39	32.65	1,520	736	768	774	214.63	102.55	114.32	116.02	1.70	1.48	13.47	13.13
United States	3.06	3.05	3.98	4.21	911	871	914	947	12.82	12.19	16.70	18.30	1.60	9.58	6.11	50.15
Total Foreign	89.13	27.27	28.41	28.45	755	721	748	748	308.97	90.36	97.62	97.72	0.10	0.10	7.36	8.14
China	6.05	5.30	5.40	5.40	1,321	1,335	1,331	1,331	36.70	32.50	33.00	33.00	0.00	0.00	0.50	1.54
South Asia																
India	9.41	10.26	10.30	10.30	523	499	528	528	22.60	23.50	25.00	25.00	0.00	0.00	1.50	6.38
Pakistan	2.90	3.00	3.20	3.20	653	697	714	694	8.70	9.60	10.50	10.20	-0.30	-2.86	0.60	6.25
Former Soviet Union - 12																
Uzbekistan	1.42	1.30	1.30	1.30	705	670	770	804	4.60	4.00	4.60	4.80	0.20	4.35	0.80	20.00
Turkmenistan	0.60	0.55	0.58	0.58	490	495	492	492	1.35	1.25	1.30	1.30	0.00	0.00	0.05	4.00
Tajikistan	0.23	0.17	0.17	0.17	454	480	528	495	0.48	0.38	0.40	0.38	-0.03	-6.25	0.00	0.00
Kazakhstan	0.16	0.12	0.13	0.13	592	680	586	586	0.44	0.38	0.35	0.35	0.00	0.00	-0.03	-6.67
Sub-Saharan Africa																
Burkina	0.44	0.42	0.48	0.48	421	363	413	413	0.85	0.70	0.90	0.90	0.00	0.00	0.20	28.57
Mali	0.19	0.20	0.25	0.25	401	463	414	414	0.35	0.43	0.48	0.48	0.00	0.00	0.05	11.76
Zimbabwe	0.37	0.38	0.40	0.40	244	269	286	286	0.42	0.47	0.53	0.53	0.00	0.00	0.06	11.70
Benin	0.21	0.18	0.20	0.20	430	423	463	463	0.41	0.35	0.43	0.43	0.00	0.00	0.08	21.43
Cote d'Ivoire	0.19	0.15	0.18	0.20	258	363	363	381	0.23	0.25	0.30	0.35	0.05	16.67	0.10	40.00
Cameroon	0.16	0.15	0.16	0.16	340	327	374	374	0.25	0.23	0.28	0.28	0.00	0.00	0.05	22.22
Nigeria	0.40	0.40	0.41	0.41	234	248	252	252	0.43	0.45	0.48	0.48	0.00	0.00	0.03	5.56
Sudan	0.09	0.04	0.12	0.12	460	354	363	363	0.19	0.07	0.20	0.20	0.00	0.00	0.14	207.69
South America																
Brazil	0.84	0.84	0.98	1.00	1,415	1,498	1,519	1,524	5.48	5.75	6.80	7.00	0.20	2.94	1.25	21.74
Argentina	0.30	0.43	0.45	0.45	435	420	435	435	0.60	0.83	0.90	0.90	0.00	0.00	0.07	8.43
Paraguay	0.05	0.02	0.05	0.05	331	381	340	340	0.08	0.04	0.08	0.08	0.00	0.00	0.04	122.86
Middle East																
Turkey	0.34	0.28	0.35	0.35	1,236	1,361	1,325	1,325	1.93	1.75	2.10	2.10	0.00	0.00	0.35	20.00
Syria	0.18	0.17	0.17	0.17	1,330	1,320	1,320	1,320	1.08	1.00	1.00	1.00	0.00	0.00	0.00	0.00
Iran	0.10	0.09	0.10	0.10	708	726	762	762	0.33	0.30	0.35	0.35	0.00	0.00	0.05	16.67
Australia	0.16	0.20	0.25	0.25	1,991	1,742	1,916	1,916	1.50	1.60	2.20	2.20	0.00	0.00	0.60	37.50
EU-27	0.31	0.29	0.33	0.33	882	758	903	903	1.24	1.02	1.39	1.39	0.00	0.00	0.37	35.78
Greece	0.25	0.24	0.27	0.27	1,002	834	968	968	1.15	0.90	1.20	1.20	0.00	0.00	0.30	33.33
Spain	0.05	0.06	0.06	0.06	325	428	615	615	0.08	0.11	0.18	0.18	0.00	0.00	0.07	59.09
Egypt	0.13	0.12	0.16	0.16	791	790	789	816	0.48	0.43	0.58	0.60	0.02	3.45	0.17	38.89
Mexico	0.10	0.07	0.11	0.11	1,222	1,313	1,244	1,244	0.57	0.42	0.64	0.64	0.00	0.00	0.22	51.66
Others	63.81	2.15	2.21	2.19	743	272	283	279	217.72	2.69	2.86	2.81	-0.05	-1.75	0.13	4.69

World and Selected Countries and Regions

TABLE 18

The table below presents a 29-year record of the differences between the July projection and the final estimate. Using world wheat production as an example, changes between the July projection and the final estimate have averaged 13.8 million tons (2.5 percent) and ranged from -34.6 to 23.7 million tons. The July projection has been below the final 17 times and above the final 12 times.

RELIABILITY OF PRODUCTION PROJECTIONS

COMMODITY AND REGION	PROJECTION AND FINAL ESTIMATES, 1981/82 - 2008/09 1/					
	Difference		Lowest	Highest	Below	Above
	Average	Average	Difference		Final	Final
	Percent	---Million metric tons---		Number of years 2/		
WHEAT						
World	2.5	13.8	-34.6	23.7	17	12
U.S.	2.8	1.7	-6.2	5.4	13	16
Foreign	2.7	13.2	-32.0	21.1	18	11
COARSE GRAINS 3/						
World	2.4	20.8	-68.4	53.6	16	13
U.S.	6.7	15.2	-32.6	57.7	14	15
Foreign	2.0	12.3	-37.9	28.2	14	15
RICE (Milled)						
World	2.1	7.4	-24.0	14.2	19	10
U.S.	3.9	0.2	-0.5	0.4	16	11
Foreign	2.1	7.4	-24.3	14.3	19	10
SOYBEANS						
World	4.2	6.5	-15.5	26.9	13	16
U.S.	5.6	3.6	-9.8	11.7	15	14
Foreign	6.9	6.0	-12.8	25.8	15	14
	---Million 480-lb. bales---					
COTTON						
World	4.2	3.8	-14.9	10.3	18	11
U.S.	9.1	1.5	-5.2	3.6	18	11
Foreign	4.0	3.0	-12.1	10.5	15	13
UNITED STATES	-----Million bushels-----					
CORN	7.2	546	-1172	2034	17	12
SORGHUM	13.4	76	-213	176	16	13
BARLEY	7.0	25	-87	62	10	18
OATS	10.1	24	-39	144	5	23

1/ The final estimate for 1981/82-2008/09 is defined as the first November estimate following the marketing year.

2/ May not total 28 if projection was the same as the final.

3/ Includes corn, sorghum, barley, oats, rye, millet, and mixed grain.