

NEBRASKA WEEKLY SUMMARY

Recap For Week Ending

October 22, 2021

Receipts: This Week: 29,724 Week Ago: 30,087 Year Ago: 25,738

Compared to last week steer calves under 600 lbs sold 3.00 to 5.00 lower, 600 lbs steers sold 2.00 higher with all weights over 650 lbs unevenly steady. Heifer calves sold 2.00 to 6.00 lower with yearling heifer weights 2.00 to 6.00 higher. Demand was moderate for calves with good demand for yearling weight cattle. Demand was moderate to good for the very light test of bred cows and bred heifers. Calf buyers prefer calves with at least two rounds of shots. Some buyers have been selective on flesh (fat) on the bawlers. Some lightweight calves are heading to the Southern Plains for wheat grazing. Feedlot sales traded mostly steady on live sales at 124.00 with some sales up to 126.50 and dressed sales steady at 196.00. Fall harvest continues with 41% of corn out of the field compared to 55% last year. Soybeans harvested is at 76% compared to 91% last year. Dry edible beans harvested at 89% compared to 95% last year. Cattle on Feed Oct 1 98.6, Placements (Sep) 97.1 and Marketings (Sep) 96.9.

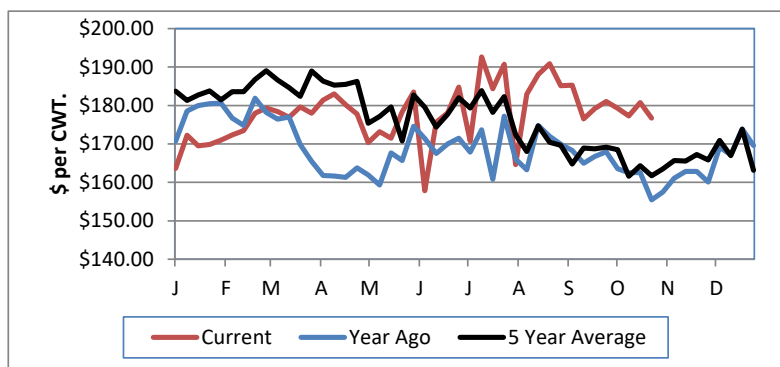
NEBRASKA WEEKLY FEEDER CATTLE AVERAGES

[Auction Summary](#)

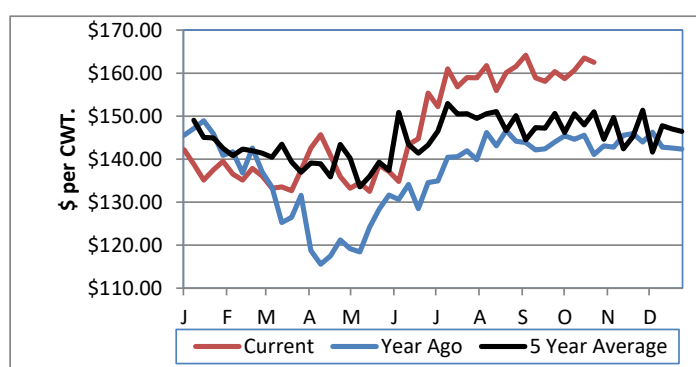
Feeder Steers:	This Week	Last Week	Year Ago
M&L 1			
400-500 lbs.	\$190.53	\$192.83	\$169.66
500-600 lbs.	\$176.68	\$180.75	\$155.44
600-700 lbs.	\$168.04	\$167.92	\$148.80
700-800 lbs.	\$164.95	\$164.61	\$143.53
800-900 lbs.	\$162.50	\$163.53	\$141.09
900-1000 lbs.	\$157.43	\$156.83	\$128.23

Feeder Heifers:	This Week	Last Week	Year Ago
M&L 1			
400-500 lbs.	\$162.27	\$168.39	\$147.97
500-600 lbs.	\$153.98	\$157.40	\$138.36
600-700 lbs.	\$143.25	\$151.93	\$133.54
700-800 lbs.	\$149.44	\$152.79	\$133.54
800-900 lbs.	\$153.41	\$150.52	\$130.50
900-1000 lbs.	\$144.12	\$141.50	\$129.83

Weekly M&L 1 500-600 lb. Feeder Steer Price



Weekly M&L 1 800-900 lb. Feeder Steer Price



Nebraska Weekly Hay Prices

[Weekly Hay Report](#)

	Squares	Rounds
Alfalfa		
Supreme		
Premium Small	7.00 per bale	
Good		132.50-150.00
Fair		125.00
Grass		
Premium Small	200.00	140.00-150.00
Fair		80.00-90.00
Ground & Delivered Alfalfa		175.00-185.00
Ground & Delivered Cornstalks		100.00

Nebraska Weekly Grain Prices

[Omaha-Council Bluffs - Changed to IA -Terminal Elevator - Southwest](#)

US NO 2 YELLOW CORN	5.17-5.37
US NO 1 SOYBEANS	11.95-12.30

Nebraska Ethanol Co-Products

[DDGS Report](#)

	Price
DDG	190.00-225.00
Modified Wet	90.00-106.00
Wet	70.00-82.00

Nebraska Weekly Weighted Average Cattle Report

[AMS 2485](#)

	This Week	Last Week	Last Year
Live Str	124.72	123.93	104.43
Live Hfr	124.58	124.05	104.84
Dressed Str	195.90	195.84	163.64
Dressed Hfr	196.00	196.00	165.23

USDA Livestock, Poultry and Grain Market News
Nebraska

Thomas Walthers, OIC
Phone: (308) 390-5399
Email: Thomas.Walthers@usda.gov
www.ams.usda.gov/lpsmarketnewspage