

**NEBRASKA WEEKLY SUMMARY**

Recap For Week Ending

January 22, 2021

**Receipts:** This Week: 45,580      Week Ago: 45,012      Year Ago: 33,988

Compared to last week steers under 600 lbs sold steady to 6.00 higher. Over 600 lbs sold 4.00 to 6.00 lower. Heifers under 500 lbs sold sharply higher, 500 lbs offering sold 2.00 higher. Over 600 lbs sold mostly 3.00 lower. Demand was moderate to good with buyers actively buying at weeks close as the CME cattle futures traded sharply higher on Friday and corn sold sharply lower on the day. For the week CME Feb cattle was up 3.95 and closed at 116.72 and Mar feeders was up 8.32 and closed the week at 137.25. Grass cattle buyers were readily procuring cattle for summer turnout as were cattlemen at area ranches at the bred cow and heifer sales reported this week. Price for bred females were firm this week as some top-quality genetics were sold across the state. Nebraska feedlots sold bulk of their show list as live sales from 109.00-110.00 and some dressed sales at 173.00.

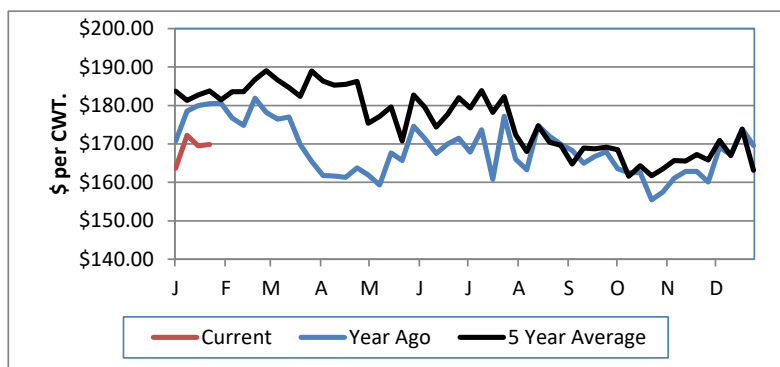
**NEBRASKA WEEKLY FEEDER CATTLE AVERAGES**

[Auction Summary](#)

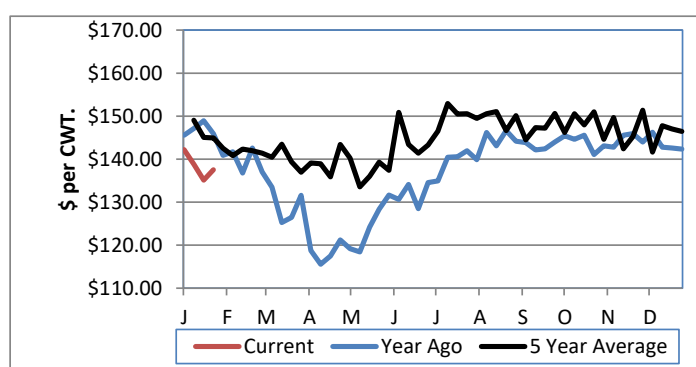
Feeder Steers:	This Week	Last Week	Year Ago
M&L 1			
400-500 lbs.	\$190.56	\$181.71	\$198.71
500-600 lbs.	\$169.83	\$169.59	\$180.49
600-700 lbs.	\$149.52	\$157.89	\$162.49
700-800 lbs.	\$141.14	\$148.39	\$153.26
800-900 lbs.	\$137.52	\$142.35	\$145.87
900-1000 lbs.	\$133.86	\$137.09	\$142.57

Feeder Heifers	This Week	Last Week	Year Ago
M&L 1			
400-500 lbs.	\$170.25	\$158.65	\$171.03
500-600 lbs.	\$152.13	\$150.71	\$157.96
600-700 lbs.	\$137.94	\$140.85	\$145.19
700-800 lbs.	\$129.09	\$132.66	\$140.85
800-900 lbs.	\$126.40	\$131.00	\$137.46
900-1000 lbs.	\$118.84	\$130.30	#N/A

Weekly M&L 1 500-600 lb. Feeder Steer Price



Weekly M&L 1 800-900 lb. Feeder Steer Price



**Nebraska Weekly Hay Prices**

[Weekly Hay Report](#)

	Squares	Rounds
<b>Alfalfa</b>		
Supreme		
Premium		
Good	150.00-175.00	95.00-120.00
Fair		
<b>Grass</b>		
Good		90.00-100.00
Premium	170.00	
<b>Ground &amp; Delivered Alfalfa</b>		135.00-140.00
<b>Ground &amp; Delivered Cornstalks</b>		72.00-78.00

**Nebraska Weekly Grain Prices**

[Omaha-Council Bluffs - Changed to IA -Terminal Elevator - Southwest](#)

US NO 2 YELLOW CORN	4.75-5.11
US NO 1 SOYBEANS	12.81-13.65

**Nebraska Ethanol Co-Products**

	Price
DDG	225.00-239.00
Modified Wet	95.00-118.00
Wet	65.00-76.00

**Nebraska Weekly Weighted Average Cattle Report**

[AMS 2485](#)

	This Week	Last Week	Last Year
Live Str	109.21	108.99	123.94
Live Hfr	109.48	109.00	123.93
Dressed Str	172.83	173.09	199.02
Dressed Hfr	172.89	172.63	199.00

**USDA Livestock, Poultry and Grain Market News**  
Nebraska

Thomas Walthers, OIC  
Phone: (308) 390-5399  
Email: [Thomas.Walthers@usda.gov](mailto:Thomas.Walthers@usda.gov)  
[www.ams.usda.gov/lpsmarketnewspage](http://www.ams.usda.gov/lpsmarketnewspage)