

NEBRASKA WEEKLY SUMMARY

Recap For Week Ending

February 19, 2021

Receipts: This Week: 17,477 Week Ago: 14,164 Year Ago: 27,554

Compared to last week steers under 600 lbs sold 5.00 to 7.00 higher, 600 to 700 lbs sold steady and over 700 lbs sold 3.00 to 4.00 lower. Heifers under 600 lbs sold 3.00 to 6.00 higher, 600 to 700 lbs steady and over 700 lbs steady to 4.00 lower. Demand was good for grass type offerings, replacement heifers with moderate to good demand for feedlot placements. Light to moderate demand for bred heifers and cows. Monday and Tuesday sales were cancelled due to air temperatures in the 30-40 below zero. Midweek sales through Saturday were reported with several cancellations at all sales. Feedlot sales were light with around 25,500 head sold on a cash basis. Live sales 113.00 to 114.00 and dressed sales 180.00 to 181.00. There really weren't a lot of feedlot managers eager to take sell their list at these prices coming out of the harsh temperatures due to the weight loss and tissue shrink. Supply included: 95% Feeder Cattle (53% Steers, 47% Heifers); 3% Slaughter Cattle (100% Cows); 2% Replacement Cattle (94% Bred Cows, 6% Bred Heifers). Feeder cattle supply over 600 lbs was 72%.

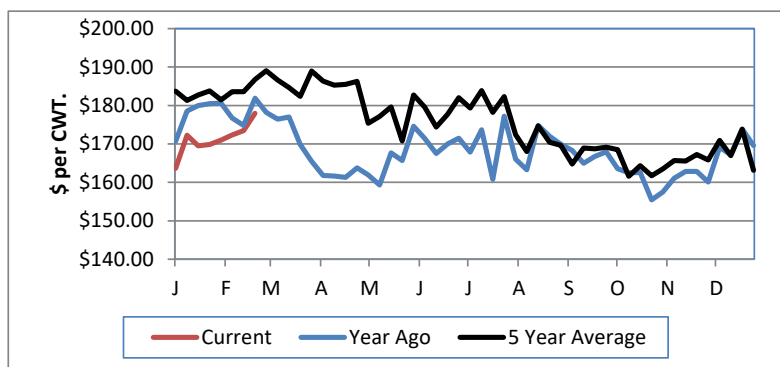
NEBRASKA WEEKLY FEEDER CATTLE AVERAGES

[Auction Summary](#)

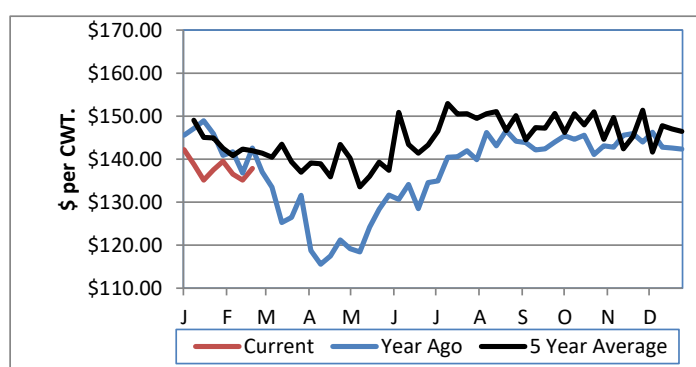
Feeder Steers:	This Week	Last Week	Year Ago
M&L 1			
400-500 lbs.	\$186.99	\$181.71	\$196.93
500-600 lbs.	\$177.96	\$169.59	\$181.89
600-700 lbs.	\$157.14	\$157.89	\$165.91
700-800 lbs.	\$145.60	\$148.39	\$154.90
800-900 lbs.	\$137.85	\$142.35	\$142.56
900-1000 lbs.	\$128.95	\$137.09	\$134.73

Feeder Heifers	This Week	Last Week	Year Ago
M&L 1			
400-500 lbs.	\$164.23	\$158.65	\$170.07
500-600 lbs.	\$153.86	\$150.71	\$161.22
600-700 lbs.	\$140.02	\$140.85	\$145.83
700-800 lbs.	\$133.59	\$132.66	\$137.38
800-900 lbs.	\$127.00	\$131.00	\$129.36
900-1000 lbs.	\$124.47	\$130.30	\$127.72

Weekly M&L 1 500-600 lb. Feeder Steer Price



Weekly M&L 1 800-900 lb. Feeder Steer Price



Nebraska Weekly Hay Prices

[Weekly Hay Report](#)

	Squares	Rounds
Alfalfa		
Supreme	220.00	
Premium	195.00	
Good		95.00-120.00
Fair	85.00	
Grass		
Good		90.00-100.00
Premium	170.00-185.00	
Ground & Delivered Alfalfa		135.00-140.00
Ground & Delivered Cornstalks		70.00-75.00

Nebraska Weekly Grain Prices

[Omaha-Council Bluffs - Changed to IA -Terminal Elevator - Southwest](#)

US NO 2 YELLOW CORN	5.22-5.37
US NO 1 SOYBEANS	13.51-13.77

Nebraska Ethanol Co-Products

	Price
DDG	220.00-240.00
Modified Wet	100.00-115.00
Wet	72.00-82.00

Nebraska Weekly Weighted Average Cattle Report

[AMS 2485](#)

	This Week	Last Week	Last Year
Live Str	113.68	113.48	119.36
Live Hfr	113.94	113.77	119.46
Dressed Str	180.59	180.08	190.06
Dressed Hfr	180.00	180.00	190.34

USDA Livestock, Poultry and Grain Market News
Nebraska

Thomas Walthers, OIC
Phone: (308) 390-5399
Email: Thomas.Walthers@usda.gov
www.ams.usda.gov/lpsmarketnewspage