

NEBRASKA WEEKLY SUMMARY

Recap For Week Ending

February 26, 2021

Receipts: This Week: 36,465 Week Ago: 17,477 Year Ago: 24,123

Compared to last week, steers under 600 lbs sold 10.00 higher, 600 to 700 lbs sold steady, over 700 lbs sold 4.00 to 6.00 lower. Heifers under 600 lbs sold 2.00 to 6.00 higher over 600 lbs sold 1.00 to 5.00 lower. Demand was good for grass type cattle and replacement heifers with moderate to good demand for feedlot placements. Rapid snow melting throughout the week left sloppy and muddy pens around the state. But temps looking forward are to be in the 60's and will help dry yard conditions up. Nebraska feedlots sales were slow to kick off as producers wanted sharply higher money for their show-list as cattle lost from 30 to 100 lbs during the bitter cold. By week's close live sales sold steady at 114.00 and dressed sales 1.00 to 2.00 higher at 182.00. Nearby March corn as up 12.75 cents and closed at 5.55 on Friday.

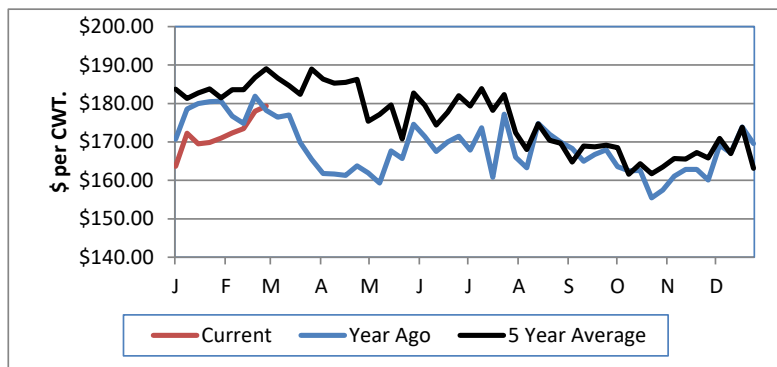
NEBRASKA WEEKLY FEEDER CATTLE AVERAGES

[Auction Summary](#)

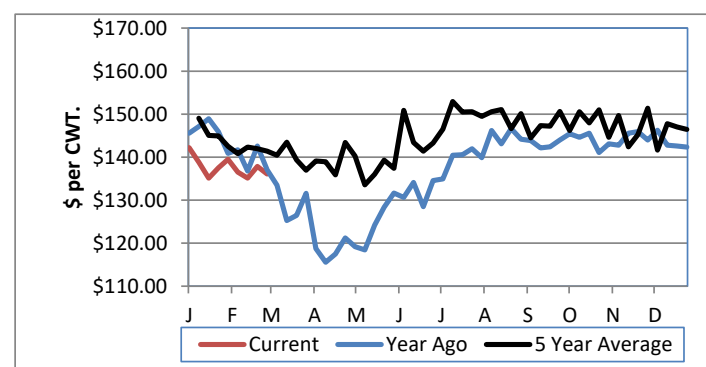
Feeder Steers:	This Week	Last Week	Year Ago
M&L 1			
400-500 lbs.	\$191.71	\$181.71	\$199.44
500-600 lbs.	\$179.33	\$169.59	\$178.21
600-700 lbs.	\$157.66	\$157.89	\$159.69
700-800 lbs.	\$144.42	\$148.39	\$144.75
800-900 lbs.	\$136.05	\$142.35	\$137.01
900-1000 lbs.	\$129.53	\$137.09	\$129.94

Feeder Heifers	This Week	Last Week	Year Ago
M&L 1			
400-500 lbs.	\$164.10	\$158.65	\$162.14
500-600 lbs.	\$152.81	\$150.71	\$156.68
600-700 lbs.	\$138.93	\$140.85	\$140.12
700-800 lbs.	\$131.11	\$132.66	\$131.65
800-900 lbs.	\$125.69	\$131.00	\$131.03
900-1000 lbs.	\$120.99	\$130.30	\$112.00

Weekly M&L 1 500-600 lb. Feeder Steer Price



Weekly M&L 1 800-900 lb. Feeder Steer Price



Nebraska Weekly Hay Prices

[Weekly Hay Report](#)

	Squares	Rounds
Alfalfa		
Supreme		
Premium		
Good	145.00	95.00-120.00
Fair		
Grass		
Good		90.00-100.00
Premium	170.00	
Ground & Delivered Alfalfa		135.00-145.00
Ground & Delivered Cornstalks		75.00

Nebraska Weekly Grain Prices

[Omaha-Council Bluffs - Changed to IA -Terminal Elevator - Southwest](#)

US NO 2 YELLOW CORN	5.31-5.43
US NO 1 SOYBEANS	13.59-14.23

Nebraska Ethanol Co-Products

	Price
DDG	225.00-239.00
Modified Wet	95.00-112.00
Wet	65.00-83.00

Nebraska Weekly Weighted Average Cattle Report

[AMS 2485](#)

	This Week	Last Week	Last Year
Live Str	113.95	113.68	114.87
Live Hfr	113.93	113.94	114.78
Dressed Str	181.67	180.59	185.60
Dressed Hfr	182.00	180.00	185.33

USDA Livestock, Poultry and Grain Market News
Nebraska

Thomas Walthers, OIC
Phone: (308) 390-5399
Email: Thomas.Walthers@usda.gov
www.ams.usda.gov/lpsmarketnewspage