

NEBRASKA WEEKLY SUMMARY

Recap For Week Ending

July 23, 2021

Receipts: This Week: 11,564 Week Ago: 13,993 Year Ago: 12,965

Compared to last week: Steers and heifers under 800 lbs sold mostly 5.00 - 10.00 higher. Steers over 800 lbs sold 1.00 - 5.00 higher and heifers over 800 lbs sold 5.00 - 8.00 higher.

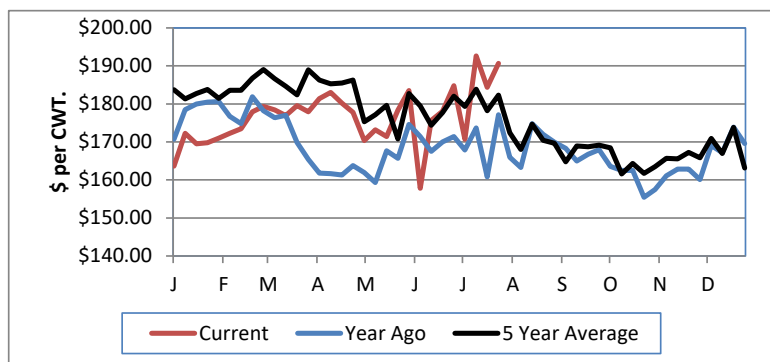
NEBRASKA WEEKLY FEEDER CATTLE AVERAGES

[Auction Summary](#)

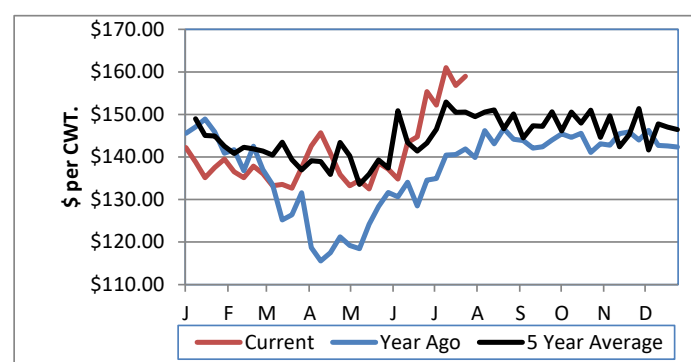
Feeder Steers: M&L 1	This Week	Last Week	Year Ago
400-500 lbs.	\$200.95	\$195.76	\$176.05
500-600 lbs.	\$190.70	\$184.35	\$177.18
600-700 lbs.	\$180.05	\$168.04	\$165.30
700-800 lbs.	\$168.99	\$162.68	\$152.17
800-900 lbs.	\$158.98	\$156.82	\$141.93
900-1000 lbs.	\$154.84	\$153.90	\$132.60

Feeder Heifers: M&L 1	This Week	Last Week	Year Ago
400-500 lbs.	\$173.98	\$170.16	\$160.99
500-600 lbs.	\$173.93	\$163.97	\$154.55
600-700 lbs.	\$161.29	\$153.47	\$146.67
700-800 lbs.	\$151.99	\$148.78	\$138.33
800-900 lbs.	\$147.48	\$140.74	\$133.18
900-1000 lbs.	\$133.71	\$133.49	\$112.00

Weekly M&L 1 500-600 lb. Feeder Steer Price



Weekly M&L 1 800-900 lb. Feeder Steer Price



Nebraska Weekly Hay Prices

[Weekly Hay Report](#)

	Squares	Rounds
Alfalfa		
Supreme		
Premium		
Good		115.00-130.00
Fair		
Grass		
Premium Small	190.00	160.00
Good		105.00-125.00
Ground & Delivered Alfalfa		165.00
Ground & Delivered Cornstalks		95.00

Nebraska Weekly Grain Prices

[Omaha-Council Bluffs - Changed to IA -Terminal Elevator - Southwest](#)

US NO 2 YELLOW CORN	6.17-6.49
US NO 1 SOYBEANS	13.66-14.82

Nebraska Ethanol Co-Products

	Price
DDG	150.00-189.00
Modified Wet	85.00-90.00
Wet	52.00-85.00

Nebraska Weekly Weighted Average Cattle Report

[AMS 2485](#)

	This Week	Last Week	Last Year
Live Str	121.98	123.86	98.04
Live Hfr	121.09	123.88	98.09
Dressed Str	195.69	198.32	158.15
Dressed Hfr	197.31	200.31	157.89

USDA Livestock, Poultry and Grain Market News
Nebraska

Thomas Walthers, OIC
Phone: (308) 390-5399
Email: Thomas.Walthers@usda.gov
www.ams.usda.gov/lpsmarketnewspage