

NEBRASKA WEEKLY SUMMARY

Recap For Week Ending

November 20, 2020

Receipts: This Week: 23,344 Week Ago: 27,518 Year Ago: 25,914

Compared to last week, steer calves sold steady to 2.00 lower. Heifer calves under 550 lbs sold steady over 550 lbs sold 1.00 to 3.00 lower. Yearling weight steers and heifers sold steady. Demand was mostly good. With most auctions reporting active bidding and buying from the internet. This time of year, there is a wide assortment of calves coming to town. The bulk of the calves are still bawlers with some weaned ones here and there. Some calves have precondition shots and others only springtime vaccinations programs. Some weaned calves have been pushed hard to gain weight and display extra flesh. Especially, lately as daytime temps have been near record highs this month instead of the cool temps that usually prevail in November. Nebraska feedlots traded most of their cash show-list at steady money with last week. Lives sales traded at 110.00 and dressed sales at 172.00

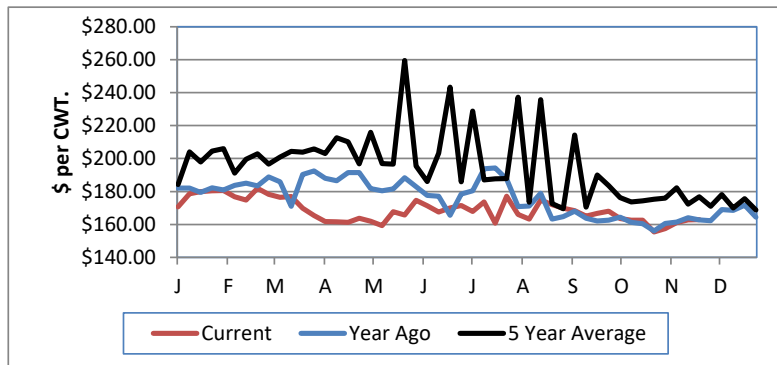
NEBRASKA WEEKLY FEEDER CATTLE AVERAGES

[Auction Summary](#)

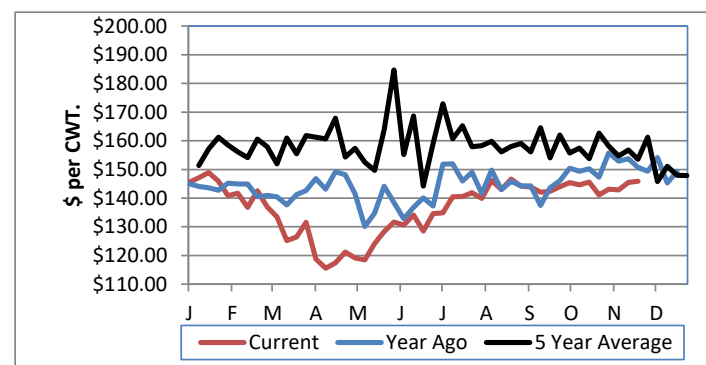
Feeder Steers:	This Week	Last Week	Year Ago
M&L 1			
400-500 lbs.	\$181.43	\$183.12	\$180.65
500-600 lbs.	\$162.86	\$162.83	\$162.75
600-700 lbs.	\$153.50	\$153.89	\$156.32
700-800 lbs.	\$146.35	\$146.44	\$153.82
800-900 lbs.	\$145.90	\$145.53	\$150.68
900-1000 lbs.	\$141.43	\$137.67	\$148.24

Feeder Heifers:	This Week	Last Week	Year Ago
M&L 1			
400-500 lbs.	\$157.37	\$157.42	\$155.01
500-600 lbs.	\$146.49	\$147.31	\$146.21
600-700 lbs.	\$137.73	\$138.47	\$146.21
700-800 lbs.	\$138.29	\$139.44	\$144.04
800-900 lbs.	\$134.74	\$135.99	\$147.68
900-1000 lbs.	\$129.80	\$132.82	\$143.87

Weekly M&L 1 500-600 lb. Feeder Steer Price



Weekly M&L 1 800-900 lb. Feeder Steer Price



Nebraska Weekly Hay Prices

[Weekly Hay Report](#)

	Squares	Rounds
Alfalfa		
Supreme	LG	
Premium	LG	
Good	LG	85.00-120.00
Fair	LG	
Grass		
Premium	LG	85.00-100.00
Premium	SM	160.00
Ground & Delivered Alfalfa		130.00-140.00
Ground & Delivered Cornstalks		60.00-75.00

Nebraska Weekly Grain Prices

[Omaha-Council Bluffs - Changed to IA -Terminal Elevator - Southwest](#)

US NO 2 YELLOW CORN	4.04-4.25
US NO 1 SOYBEANS	11.26-11.61

Nebraska Ethanol Co-Products

	Price
DDG	190.00-210.00
Modified Wet	80.00-101.00
Wet	55.00-65.00

Nebraska Weekly Weighted Average Cattle Report

[lm_ct158.txt](#)

	This Week	Last Week	Last Year
Live Str	109.92	109.82	116.05
Live Hfr	109.79	109.72	116.31
Dressed Str	171.87	171.97	183.66
Dressed Hfr	172.00	172.00	184.00

USDA Livestock, Poultry and Grain Market News
Nebraska

Thomas Walthers, OIC
Phone: (308) 390-5399
Email: Thomas.Walthers@usda.gov
www.ams.usda.gov/lpsmarketnewspage