

NEBRASKA WEEKLY SUMMARY

Recap For Week Ending

September 11, 2020

Receipts: This Week: 13,810 Week Ago: 12,179 Year Ago: 7,825

Compared to last week steers under 750 lbs sold steady to 5.00 lower, over 750 lbs sold unevenly steady. Heifer calves under 550 lbs sold 6.00-7.00 higher, 550 to 700 lbs sold mostly steady and over 750 lbs sold 1.00 to 4.00 higher. Demand was good instances very good for yearling cattle off summer grass. Sharply cooler temps blew across the state on Tuesday with very light snow in the Panhandle and sporadic rain showers across the state. Some areas in the Panhandle saw early morning temps in the high 20's to low 30's. Many are hoping only minimal damage will occur to forages left to harvest. Feedlot trade lower across the region on cash sales. Live sales sold 1.00 to 2.00 lower at 101.00 and dressed sales traded 2.00 to 3.00 lower from 160.00-161.00.

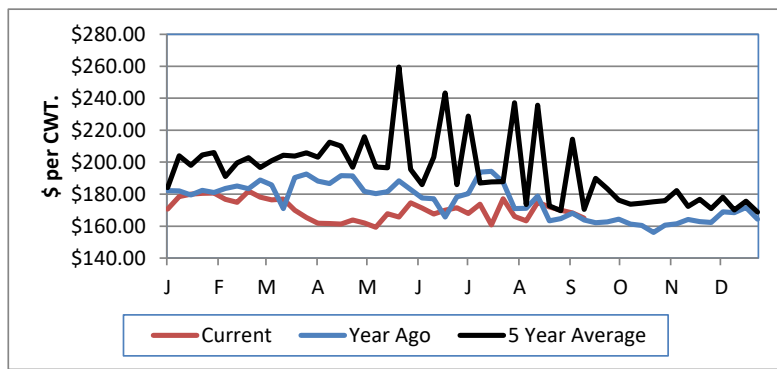
NEBRASKA WEEKLY FEEDER CATTLE AVERAGES

[Auction Summary](#)

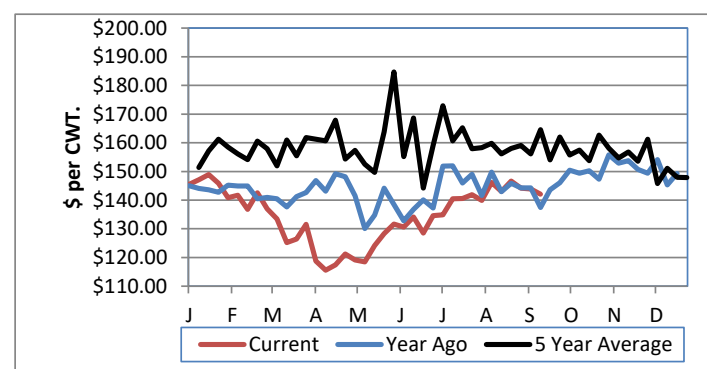
Feeder Steers:	This Week	Last Week	Year Ago
M&L 1			
400-500 lbs.	\$183.88	\$187.68	\$172.96
500-600 lbs.	\$165.00	\$168.31	\$163.81
600-700 lbs.	\$156.59	\$161.15	\$149.06
700-800 lbs.	\$150.85	\$150.38	\$147.93
800-900 lbs.	\$142.12	\$143.85	\$137.45
900-1000 lbs.	\$140.55	\$135.84	\$130.54

Feeder Heifers	This Week	Last Week	Year Ago
M&L 1			
400-500 lbs.	\$164.68	\$156.59	\$147.86
500-600 lbs.	\$147.98	\$149.38	\$140.61
600-700 lbs.	\$143.23	\$144.12	\$138.36
700-800 lbs.	\$140.13	\$139.00	\$133.77
800-900 lbs.	\$136.85	\$132.67	\$129.95
900-1000 lbs.	\$131.76	\$129.63	\$123.83

Weekly M&L 1 500-600 lb. Feeder Steer Price



Weekly M&L 1 800-900 lb. Feeder Steer Price



Nebraska Weekly Hay Prices

[Weekly Hay Report](#)

	Squares	Rounds
Alfalfa		
Supreme	LG	
Premium	LG	
Good	LG 176.00	90.00-100.00
Fair	LG	
Grass		
Premium	LG	90.00-100.00
Premium	SM	160.00

Ground & Delivered Alfalfa 130.00
Ground & Delivered Cornstalks 60.00-70.00

Nebraska Weekly Weighted Average Cattle Report

[lm_ct158.txt](#)

	This Week	Last Week	Last Year
Live Str	100.98	102.54	100.13
Live Hfr	101.03	102.24	99.83
Dressed Str	160.64	163.06	158.37
Dressed Hfr	160.25	162.92	158.71

Nebraska Weekly Grain Prices

Omaha-Council Bluffs Grain Bids Bid

US NO 2 YELLOW CORN	2.93-3.57
US NO 1 SOYBEANS	8.27-9.52

Nebraska Ethanol Co-Products

	Price
DDG	140.00-169.00
Modified Wet	54.00-80.00
Wet	35.00-48.50

**USDA Livestock, Poultry and Grain Market News
Nebraska**

Thomas Walthers, OIC
Phone: (308) 390-5399
Email: Thomas.Walthers@usda.gov
www.ams.usda.gov/lpsmarketnews