

Receipts: This Week: 17,205 Week Ago: 23,344 Year Ago: 11,063

Compared to last week steers sold steady to 3.00 lower and heifers sold steady to 2.00 lower. Demand was moderate to good. Receipts a little shorter this week due to the Thanksgiving Day holiday on Thursday. Several auctions decided not to hold sales this week because of it. All auctions will have a full slate next week. Weather have been very good the last seven days. Some scattered rain showers across the state on Tuesday will the moisture soaking into the parch ground. Early rounds of feedlot sales on Wednesday saw the dressed sales trade 2.00 higher than last week at 174.00 and live sales steady to 1.00 higher from 110.00-111.00.

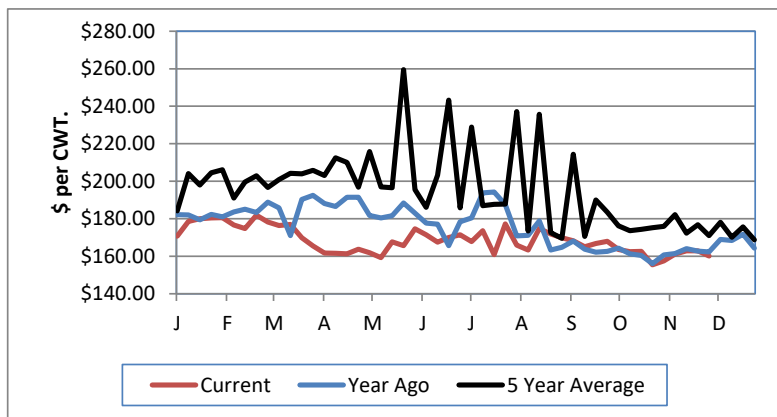
NEBRASKA WEEKLY FEEDER CATTLE AVERAGES

[Auction Summary](#)

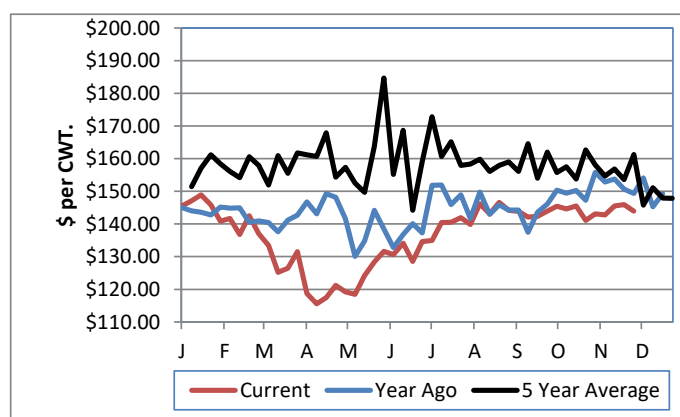
Feeder Steers: M&L 1	This Week	Last Week	Year Ago
400-500 lbs.	\$179.95	\$181.43	\$181.45
500-600 lbs.	\$160.11	\$162.86	\$162.33
600-700 lbs.	\$151.32	\$153.50	\$154.77
700-800 lbs.	\$143.28	\$146.35	\$146.62
800-900 lbs.	\$143.98	\$145.90	\$149.35
900-1000 lbs.	#N/A	\$141.43	\$151.50

Feeder Heifers: M&L 1	This Week	Last Week	Year Ago
400-500 lbs.	\$154.93	\$157.37	\$158.68
500-600 lbs.	\$146.87	\$146.49	\$145.97
600-700 lbs.	\$139.11	\$137.73	\$137.26
700-800 lbs.	\$133.26	\$138.29	\$140.95
800-900 lbs.	\$133.99	\$134.74	\$145.84
900-1000 lbs.	\$129.00	\$129.80	\$143.75

Weekly M&L 1 500-600 lb. Feeder Steer Price



Weekly M&L 1 800-900 lb. Feeder Steer Price



Nebraska Weekly Hay Prices

[Weekly Hay Report](#)

		Squares	Rounds
<b>Alfalfa</b>			
Supreme	LG		
Premium	LG		
Good	LG		85.00-120.00
Fair	LG		
<b>Grass</b>			
Premium	LG		85.00-100.00
Premium	SM	160.00	
<b>Ground &amp; Delivered Alfalfa</b>			130.00-140.00
<b>Ground &amp; Delivered Cornstalks</b>			60.00-75.00

Nebraska Weekly Grain Prices

[Omaha-Council Bluffs - Changed to IA -Terminal Elevator - Southwest](#)

US NO 2 YELLOW CORN	4.17-4.26
US NO 1 SOYBEANS	11.68-11.71

Nebraska Ethanol Co-Products

	Price
DDG	195.00-225.00
Modified Wet	85.00-111.00
Wet	60.00-65.00

Nebraska Weekly Weighted Average Cattle Report

[lm\\_ct158.txt](#)

	This Week	Last Week	Last Year
Live Str	110.38	109.92	118.90
Live Hfr	110.81	109.79	119.03
Dressed Str	173.34	171.87	186.93
Dressed Hfr	173.83	172.00	187.00

USDA Livestock, Poultry and Grain Market News  
Nebraska

Thomas Walthers, OIC  
Phone: (308) 390-5399  
Email: [Thomas.Walthers@usda.gov](mailto:Thomas.Walthers@usda.gov)  
[www.ams.usda.gov/lpsmarketnewspage](http://www.ams.usda.gov/lpsmarketnewspage)