

NEBRASKA WEEKLY SUMMARY

Recap For Week Ending

May 14, 2021

Receipts: This Week: 12,172 Week Ago: 6,985 Year Ago: 7,857

Compared to last week steers under 600 lbs sold steady to 2.00 lower, over 600 lbs sold 8.00 to 10.00 lower. Heifers under 500 lbs sold 2.00 to 3.00 lower, over 500 lbs sold 3.00 to 7.00 lower. Demand was moderate on feedlot placements and fall bred cows with good demand for grass type cattle and cow/calf pairs. Some parts of the state remain very dry and some ranchers sold their summer and fall bred cows this week. With other cleaning up some pairs of various ages. Majority of these cattle would normally stay at home, but some areas remain dry and cattlemen are trying to conserve pastures. Spotty rain showers over the week across the state. Nebraska feedlot traded some of their show list a tick higher than last week's market. Live sales sold 2.00 higher at 120.00 an dressed sales sold 1.00 to 3.00 higher at 191.00.

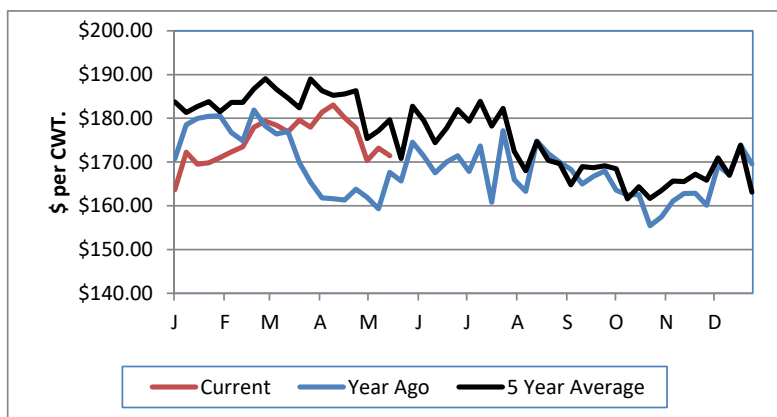
NEBRASKA WEEKLY FEEDER CATTLE AVERAGES

[Auction Summary](#)

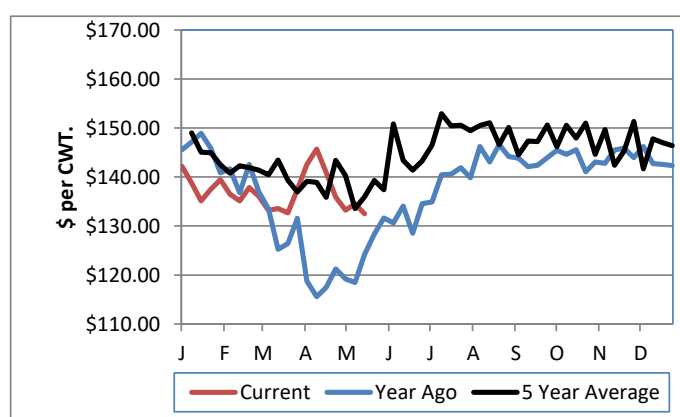
Feeder Steers: M&L 1	This Week	Last Week	Year Ago
400-500 lbs.	\$181.07	\$181.71	\$166.75
500-600 lbs.	\$171.46	\$169.59	\$167.67
600-700 lbs.	\$157.93	\$157.89	\$157.60
700-800 lbs.	\$140.36	\$148.39	\$136.41
800-900 lbs.	\$132.50	\$142.35	\$124.20
900-1000 lbs.	\$127.62	\$137.09	\$113.66

Feeder Heifers M&L 1	This Week	Last Week	Year Ago
400-500 lbs.	\$155.79	\$158.65	\$148.90
500-600 lbs.	\$148.89	\$150.71	\$143.43
600-700 lbs.	\$133.89	\$140.85	\$131.33
700-800 lbs.	\$129.37	\$132.66	\$119.40
800-900 lbs.	\$125.53	\$131.00	\$105.87
900-1000 lbs.	\$115.70	\$130.30	\$113.35

Weekly M&L 1 500-600 lb. Feeder Steer Price



Weekly M&L 1 800-900 lb. Feeder Steer Price



Nebraska Weekly Hay Prices

[Weekly Hay Report](#)

	Squares	Rounds
Alfalfa		
Supreme		
Premium		
Good	175.00	100.00
Fair		
Grass		
Premium Small	170.00	
Good		100.00
Ground & Delivered Alfalfa		140.00-150.00
Ground & Delivered Cornstalks		78.00-85.00

Nebraska Weekly Grain Prices

[Omaha-Council Bluffs - Changed to IA -Terminal Elevator - Southwest](#)

US NO 2 YELLOW CORN	6.67-7.60
US NO 1 SOYBEANS	15.94-17.02

Nebraska Ethanol Co-Products

	Price
DDG	240.00-270.00
Modified Wet	105.00-125.00
Wet	90.00-101.00

Nebraska Weekly Weighted Average Cattle Report

[AMS 2485](#)

	This Week	Last Week	Last Year
Live Str	120.39	117.87	112.17
Live Hfr	120.32	117.70	112.52
Dressed Str	191.00	188.94	178.86
Dressed Hfr	191.41	188.87	181.81

USDA Livestock, Poultry and Grain Market News
Nebraska

Thomas Walthers, OIC
Phone: (308) 390-5399
Email: Thomas.Walthers@usda.gov
www.ams.usda.gov/lpsmarketnewspage