

NEBRASKA WEEKLY SUMMARY

Recap For Week Ending

January 8, 2021

Receipts: This Week: 53,495 Week Ago: 6,828 Year Ago: 43,732

Compared to last weeks light test, this weeks heavy supply of grass type steers and heifers sold steady to 5.00 higher with feeder steers and heifers steady to 4.00 lower. Demand was good for grass cattle with moderate to good demand for feeder cattle. Wide range of flesh conditions across the state with several top quality replacement type heifers in the mix. Nebraska feedlot sales ranged from 110.00-112.00 and dressed sales from 175.00 to 177.00. Supply included: 98% Feeder Cattle (60% Steers, 40% Heifers, 0% Bulls); 2% Slaughter Cattle (100% Cows). Feeder cattle supply over 600 lbs was 67%. ** Next release will be Tuesday Jan 19th due to Monday holiday.**

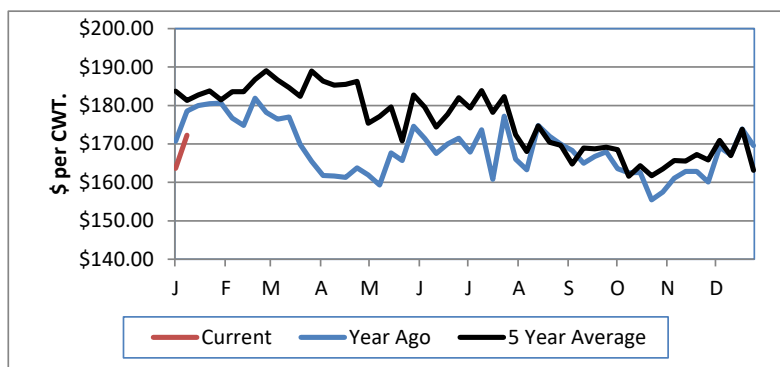
NEBRASKA WEEKLY FEEDER CATTLE AVERAGES

[Auction Summary](#)

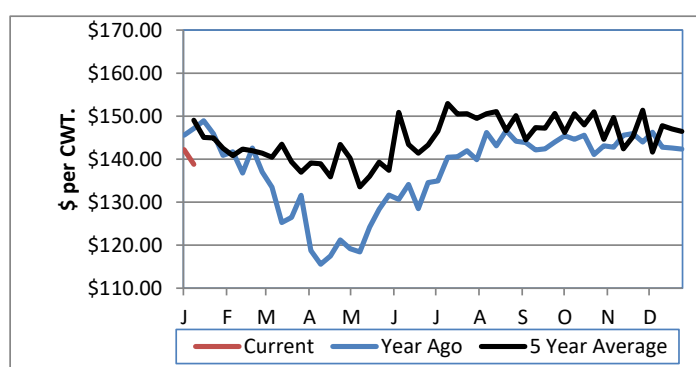
Feeder Steers:	This Week	Last Week	Year Ago
M&L 1			
400-500 lbs.	\$188.72	\$181.71	\$197.26
500-600 lbs.	\$172.26	\$169.59	\$178.53
600-700 lbs.	\$154.37	\$157.89	\$162.84
700-800 lbs.	\$144.41	\$148.39	\$154.51
800-900 lbs.	\$138.79	\$142.35	\$147.11
900-1000 lbs.	\$133.16	\$137.09	\$145.90

Feeder Heifers	This Week	Last Week	Year Ago
M&L 1			
400-500 lbs.	\$169.84	\$158.65	\$166.78
500-600 lbs.	\$154.23	\$150.71	\$157.74
600-700 lbs.	\$140.08	\$140.85	\$145.60
700-800 lbs.	\$131.99	\$132.66	\$140.95
800-900 lbs.	\$130.50	\$131.00	\$138.70
900-1000 lbs.	\$125.14	\$130.30	\$130.51

Weekly M&L 1 500-600 lb. Feeder Steer Price



Weekly M&L 1 800-900 lb. Feeder Steer Price



Nebraska Weekly Hay Prices

[Weekly Hay Report](#)

	Squares	Rounds
Alfalfa		
Supreme		125.00
Premium		120.00
Good	150.00	95.00-110.00
Fair		
Grass		
Good		90.00-100.00
Premium	170.00	
Ground & Delivered Alfalfa		135.00-140.00
Ground & Delivered Cornstalks		72.00-78.00

Nebraska Weekly Grain Prices

[Omaha-Council Bluffs - Changed to IA -Terminal Elevator - Southwest](#)

US NO 2 YELLOW CORN	4.66-4.86
US NO 1 SOYBEANS	12.93-13.54

Nebraska Ethanol Co-Products

	Price
DDG	220.00-242.00
Modified Wet	95.00-116.00
Wet	69.00-75.00

Nebraska Weekly Weighted Average Cattle Report

[AMS 2485](#)

	This Week	Last Week	Last Year
Live Str	110.64	111.17	124.08
Live Hfr	110.41	111.17	124.00
Dressed Str	176.02	175.75	199.94
Dressed Hfr	175.92	175.95	200.00

USDA Livestock, Poultry and Grain Market News
Nebraska

Thomas Walthers, OIC
Phone: (308) 390-5399
Email: Thomas.Walthers@usda.gov
www.ams.usda.gov/lpsmarketnewspage