

Receipts: This Week: 25,705 Week Ago: 20,587 Year Ago: 15,736

Compared to last week demand was moderate to very good. Feeder steers under 500 lbs sold mostly 4.00 to 5.00 higher, 500-850 lbs mostly 1.00 to 2.00 lower, and over 850 lbs 2.00 to 9.00 higher. Feeder heifers under 600 lbs sold mostly 6.00 to 8.00 higher, 600-800 lbs 1.00 to 7.00 lower, 800-1000 lbs 2.00 to 8.00 higher, and over 1000 lbs 1.00 lower on a light test. Next released report Oct 18th.

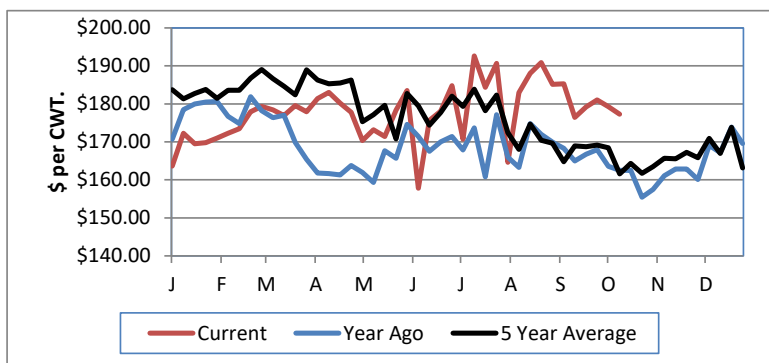
NEBRASKA WEEKLY FEEDER CATTLE AVERAGES

[Auction Summary](#)

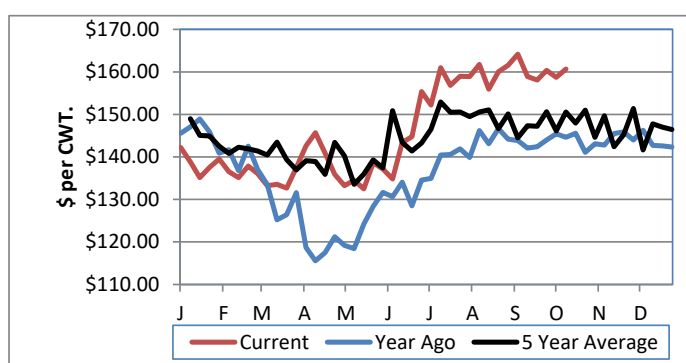
Feeder Steers: M&L 1	This Week	Last Week	Year Ago
400-500 lbs.	\$193.11	\$188.95	\$176.32
500-600 lbs.	\$177.32	\$179.28	\$162.52
600-700 lbs.	\$170.11	\$170.83	\$157.87
700-800 lbs.	\$160.48	\$161.60	\$151.65
800-900 lbs.	\$160.64	\$158.74	\$144.63
900-1000 lbs.	\$156.17	\$153.83	\$140.24

Feeder Heifers: M&L 1	This Week	Last Week	Year Ago
400-500 lbs.	\$167.99	\$161.97	\$160.66
500-600 lbs.	\$160.82	\$153.87	\$147.60
600-700 lbs.	\$151.43	\$156.06	\$147.15
700-800 lbs.	\$152.08	\$154.25	\$141.32
800-900 lbs.	\$150.64	\$145.83	\$137.29
900-1000 lbs.	\$146.38	\$138.78	\$134.19

Weekly M&L 1 500-600 lb. Feeder Steer Price



Weekly M&L 1 800-900 lb. Feeder Steer Price



Nebraska Weekly Hay Prices

[Weekly Hay Report](#)

	Squares	Rounds
Alfalfa		
Supreme		
Premium		
Good	210.00	140.00-150.00
Fair		
Grass		
Premium Small	200.00	140.00-150.00
Good		
Ground & Delivered Alfalfa		175.00
Ground & Delivered Cornstalks		100.00

Nebraska Weekly Grain Prices

[Omaha-Council Bluffs - Changed to IA -Terminal Elevator - Southwest](#)

US NO 2 YELLOW CORN	5.36-5.50
US NO 1 SOYBEANS	12.11-12.26

Nebraska Ethanol Co-Products

	Price
DDG	185.00-225.00
Modified Wet	90.00-107.00
Wet	63.00-80.00

Nebraska Weekly Weighted Average Cattle Report

[AMS 2485](#)

	This Week	Last Week	Last Year
Live Str	122.92	122.14	108.19
Live Hfr	123.19	122.40	108.40
Dressed Str	195.40	195.59	169.73
Dressed Hfr	195.86	196.00	169.99

USDA Livestock, Poultry and Grain Market News
Nebraska

Thomas Walthers, OIC
Phone: (308) 390-5399
Email: Thomas.Walthers@usda.gov

www.ams.usda.gov/lpsmarketnewspage