

**NEBRASKA WEEKLY SUMMARY**

Recap For Week Ending

January 15, 2021

**Receipts:** This Week: 45,012      Week Ago: 53,495      Year Ago: 49,114

Compared to last week flyweight steers and heifers sold 5.00 to 7.00 higher, 500 lbs steers and heifers sold steady. Steers over 600 lbs sold 5.00 to 7.00 lower. Heifers over 600 lbs sold 4.00 to 5.00 lower. Heavy supplies and sharply higher corn market and slightly mudding pens conditions aided in the downturn of the market this week. By looking at the report, there are all types of flesh conditions on the market. Most buyers are cautious on procuring cattle displaying too much flesh (fat) as these animals convert calories differently and adds to the cost of gain in the feedlots. Several buyers continue to seek out top quality heifers to be bred and placed into productions next year. Nebraska feedlot sales sold lower on the week. Live sales traded from 109.00 to 110.00 and dressed sales from 172.00 to 174.00

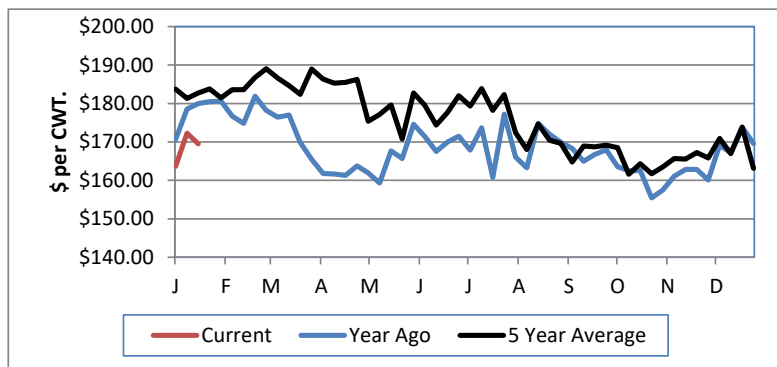
**NEBRASKA WEEKLY FEEDER CATTLE AVERAGES**

[Auction Summary](#)

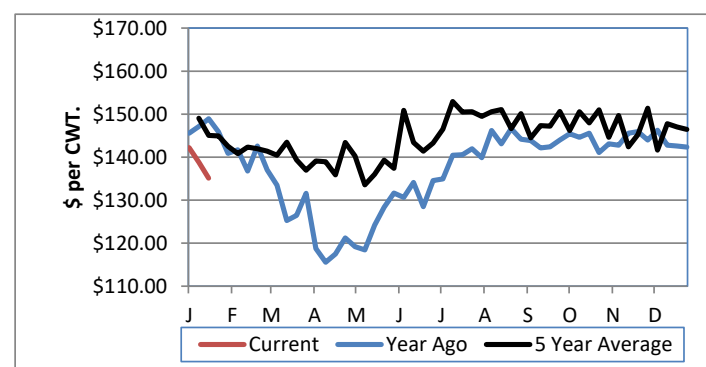
Feeder Steers:	This Week	Last Week	Year Ago
M&L 1			
400-500 lbs.	\$188.58	\$181.71	\$199.73
500-600 lbs.	\$169.53	\$169.59	\$179.98
600-700 lbs.	\$150.30	\$157.89	\$164.42
700-800 lbs.	\$140.00	\$148.39	\$152.10
800-900 lbs.	\$135.12	\$142.35	\$148.92
900-1000 lbs.	\$131.09	\$137.09	\$142.99

Feeder Heifers	This Week	Last Week	Year Ago
M&L 1			
400-500 lbs.	\$163.93	\$158.65	\$169.93
500-600 lbs.	\$150.38	\$150.71	\$156.78
600-700 lbs.	\$136.62	\$140.85	\$146.01
700-800 lbs.	\$128.50	\$132.66	\$141.05
800-900 lbs.	\$126.13	\$131.00	\$140.97
900-1000 lbs.	\$118.68	\$130.30	\$133.48

Weekly M&L 1 500-600 lb. Feeder Steer Price



Weekly M&L 1 800-900 lb. Feeder Steer Price



**Nebraska Weekly Hay Prices**

[Weekly Hay Report](#)

	Squares	Rounds
<b>Alfalfa</b>		
Supreme		
Premium		120.00
Good	150.00-175.00	95.00-110.00
Fair		
<b>Grass</b>		
Good		90.00-100.00
Premium	170.00	
<b>Ground &amp; Delivered Alfalfa</b>		135.00-140.00
<b>Ground &amp; Delivered Cornstalks</b>		72.00-78.00

**Nebraska Weekly Grain Prices**

[Omaha-Council Bluffs - Changed to IA -Terminal Elevator - Southwest](#)

US NO 2 YELLOW CORN	4.74-5.19
US NO 1 SOYBEANS	13.46-14.10

**Nebraska Ethanol Co-Products**

	Price
DDG	210.00-246.00
Modified Wet	95.00-119.00
Wet	73.00-75.00

**Nebraska Weekly Weighted Average Cattle Report**

[AMS 2485](#)

	This Week	Last Week	Last Year
Live Str	108.99	110.64	123.98
Live Hfr	109.00	110.41	123.79
Dressed Str	173.09	176.02	199.21
Dressed Hfr	172.63	175.92	199.06

**USDA Livestock, Poultry and Grain Market News**  
Nebraska

Thomas Walthers, OIC  
Phone: (308) 390-5399  
Email: [Thomas.Walthers@usda.gov](mailto:Thomas.Walthers@usda.gov)  
[www.ams.usda.gov/lpsmarketnewspage](http://www.ams.usda.gov/lpsmarketnewspage)