

NEBRASKA WEEKLY SUMMARY

Recap For Week Ending

December 3, 2021

Receipts: This Week: 26,446 Week Ago: 14,335 Year Ago: 27,887

Compared to last week: No comparison for steers under 400 lbs, due to the light run of the previous holiday week. Steers 400 - 600 lbs sold 5.00 to 10.00 higher, steers 600 - 750 lbs sold steady to 3.00 higher, and steers over 750 lbs traded 1.00 to 5.00 lower. Heifers under 700 lbs sold 2.00 to 7.00 higher, and heifers over 700 lbs sold steady to 3.00 lower, though heifers 950 - 1000 lbs sold 3.00 higher. Sales were well attended and demand ranged from moderate to very good, with active markets. Negotiated cash feedlot sales traded higher with dressed sales in Nebraska 3.00 higher at 220.00. Bulk of the live sales sold steady to 4.00 higher at 140.00 with some live sales at 142.00-142.50.

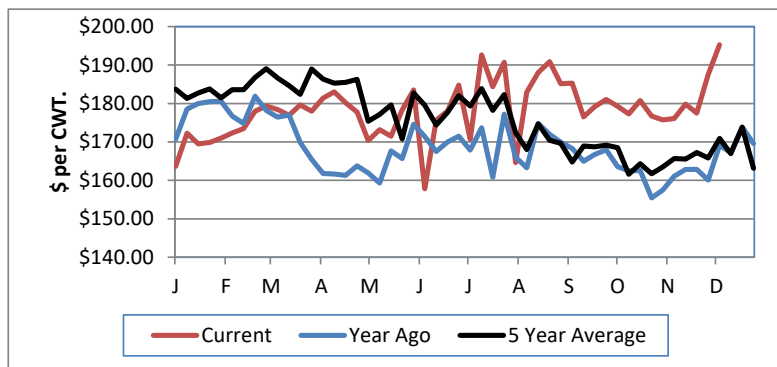
NEBRASKA WEEKLY FEEDER CATTLE AVERAGES

[Auction Summary](#)

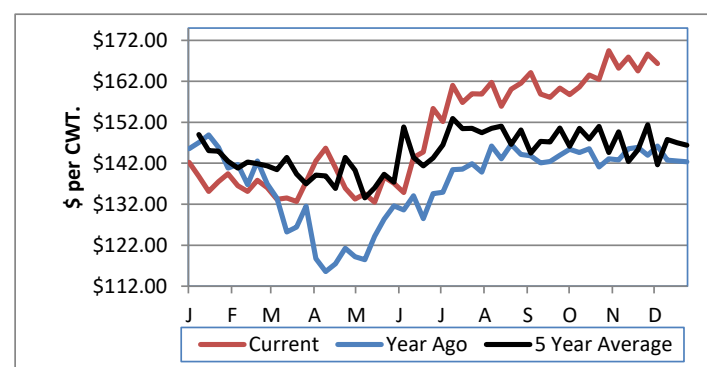
Feeder Steers:	This Week	Last Week	Year Ago
M&L 1			
400-500 lbs.	\$213.46	\$204.15	\$190.13
500-600 lbs.	\$195.27	\$187.56	\$169.12
600-700 lbs.	\$176.17	\$175.17	\$158.42
700-800 lbs.	\$171.91	\$173.11	\$150.30
800-900 lbs.	\$166.33	\$168.63	\$146.24
900-1000 lbs.	\$163.43	\$163.61	\$187.14

Feeder Heifers	This Week	Last Week	Year Ago
M&L 1			
400-500 lbs.	\$179.90	\$176.14	\$163.03
500-600 lbs.	\$169.14	\$163.99	\$151.70
600-700 lbs.	\$158.62	\$157.08	\$140.82
700-800 lbs.	\$157.83	\$160.12	\$131.88
800-900 lbs.	\$154.76	\$157.11	\$131.68
900-1000 lbs.	\$149.99	\$150.45	\$133.56

Weekly M&L 1 500-600 lb. Feeder Steer Price



Weekly M&L 1 800-900 lb. Feeder Steer Price



Nebraska Weekly Hay Prices

[Weekly Hay Report](#)

	Squares	Rounds
Alfalfa		
Supreme		
Premium		
Good		135.00-150.00
Fair		120.00
Grass		
Premium	200.00	120.00-140.00
Fair		80.00-90.00
Ground & Delivered Alfalfa		185.00
Ground & Delivered Cornstalks		100.00

Nebraska Weekly Grain Prices

[Omaha-Council Bluffs - Changed to IA -Terminal Elevator - Southwest](#)

US NO 2 YELLOW CORN	5.67-5.89
US NO 1 SOYBEANS	12.14-12.77

Nebraska Ethanol Co-Products

	Price
DDG	185.00-215.00
Modified Wet	80.00-101.00
Wet	72.00-91.00

Nebraska Weekly Weighted Average Cattle Report

[AMS 2485](#)

	This Week	Last Week	Last Year
Live Str	140.12	137.56	109390.00
Live Hfr	140.70	137.75	109.78
Dressed Str	220.07	217.07	172.36
Dressed Hfr	220.00	217.23	172.73

USDA Livestock, Poultry and Grain Market News
Nebraska

Thomas Walthers, OIC
Phone: (308) 390-5399
Email: Thomas.Walthers@usda.gov
www.ams.usda.gov/lpsmarketnewspage