

NEBRASKA WEEKLY SUMMARY

Recap For Week Ending

May 7, 2021

Receipts: This Week: 6,985 Week Ago: 12,995 Year Ago: 9,524

Compared to last week steers suited for summer grass sold 4.00 to 6.00 higher with feedlot placements trending 7.00 to 10.00 lower. Heifer calves under 500 lbs sold 5.00 higher, 500 to 800 lbs sold 5.00 to 8.00 lower and over 800 lbs sold 10.00 lower. Nice run of cow/calf pairs on hand and the heifer pairs sold steady with last week's thin test. Demand was good for grass cattle, moderate to instances good for feedlot placements with moderate to good demand for pairs, and summer bred cows. Nebraska feedlots sold live and dressed sales 1.00 to 2.00 lower at 118.00 and 188.00 to 190.00 respectively. Spotty rain showers and frost across some of the Cornhusker state with the roughly the western half of the state still showing up on the drought monitor as abnormal and moderate drought. This large area consists of some farm ground with the bulk of the area relying on rain to give growth to the native Sandhills grass used for grazing and hay production.

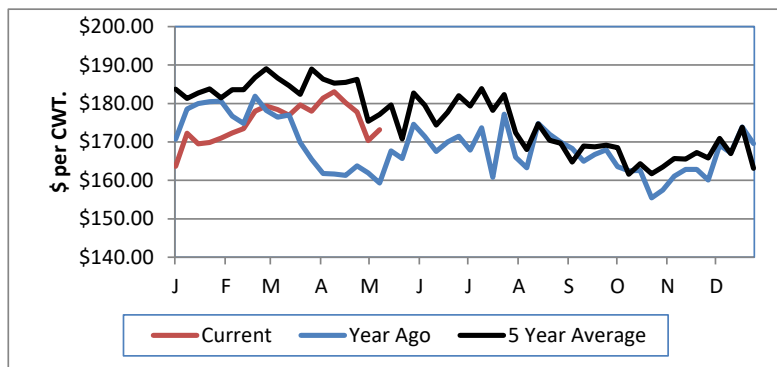
NEBRASKA WEEKLY FEEDER CATTLE AVERAGES

[Auction Summary](#)

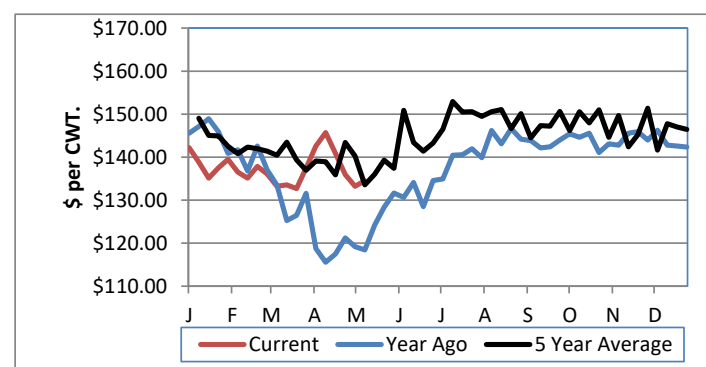
Feeder Steers:	This Week	Last Week	Year Ago
M&L 1			
400-500 lbs.	\$179.15	\$181.71	\$169.47
500-600 lbs.	\$173.22	\$169.59	\$159.30
600-700 lbs.	\$165.16	\$157.89	\$145.94
700-800 lbs.	\$141.18	\$148.39	\$134.94
800-900 lbs.	\$134.51	\$142.35	\$118.46
900-1000 lbs.	\$125.11	\$137.09	\$113.58

Feeder Heifers:	This Week	Last Week	Year Ago
M&L 1			
400-500 lbs.	\$166.45	\$158.65	\$146.45
500-600 lbs.	\$147.12	\$150.71	\$136.16
600-700 lbs.	\$132.35	\$140.85	\$130.77
700-800 lbs.	\$127.47	\$132.66	\$119.48
800-900 lbs.	\$120.64	\$131.00	\$112.26
900-1000 lbs.	\$116.00	\$130.30	\$97.86

Weekly M&L 1 500-600 lb. Feeder Steer Price



Weekly M&L 1 800-900 lb. Feeder Steer Price



Nebraska Weekly Hay Prices

[Weekly Hay Report](#)

	Squares	Rounds
Alfalfa		
Supreme		
Premium		
Good		110.00-115.00
Fair		
Grass		
Premium Small	170.00	
Good		100.00
Ground & Delivered Alfalfa		140.00-150.00
Ground & Delivered Cornstalks		78.00-85.00

Nebraska Weekly Grain Prices

[Omaha-Council Bluffs - Changed to IA -Terminal Elevator - Southwest](#)

US NO 2 YELLOW CORN	6.97-7.65
US NO 1 SOYBEANS	15.29-16.49

Nebraska Ethanol Co-Products

	Price
DDG	240.00-260.00
Modified Wet	100.00-123.00
Wet	81.00-96.00

Nebraska Weekly Weighted Average Cattle Report

[AMS 2485](#)

	This Week	Last Week	Last Year
Live Str	117.87	119.40	100.33
Live Hfr	117.70	120.00	103.57
Dressed Str	188.94	190.29	153.30
Dressed Hfr	188.87	190.92	150.69

USDA Livestock, Poultry and Grain Market News
Nebraska

Thomas Walthers, OIC
Phone: (308) 390-5399
Email: Thomas.Walthers@usda.gov
www.ams.usda.gov/lpsmarketnewspage