

NEBRASKA WEEKLY SUMMARY

Recap For Week Ending

October 15, 2021

Receipts: This Week: 30,087 Week Ago: 25,705 Year Ago: 35,238

Compared to last week steers calves under 600 lbs sold steady to 4.00 higher, 600 to 700 lbs sold 2.00 to 3.00 lower. Yearling steers sold steady to 3.00 higher. Heifer calves sold 2.00 to 4.00 lower with yearlings steady to 3.00 lower. Demand was moderate to good for the large supply of bawling calves hitting the market. A few less receipts than last year as some consignments were cancelled in the Western part of the state due to rain and snow. Plus, some ranchers sold off cows due to the drought conditions and this will contribute to the lower feeder cattle receipts. Nebraska feedlot trade mostly steady on live and dressed sales at 124.00 and 196.00 respectively.

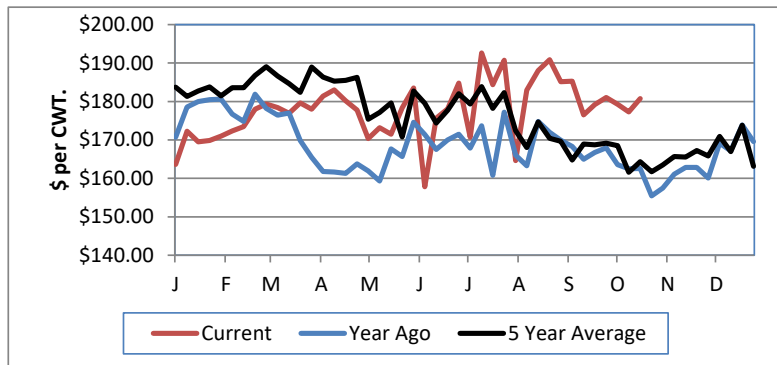
NEBRASKA WEEKLY FEEDER CATTLE AVERAGES

[Auction Summary](#)

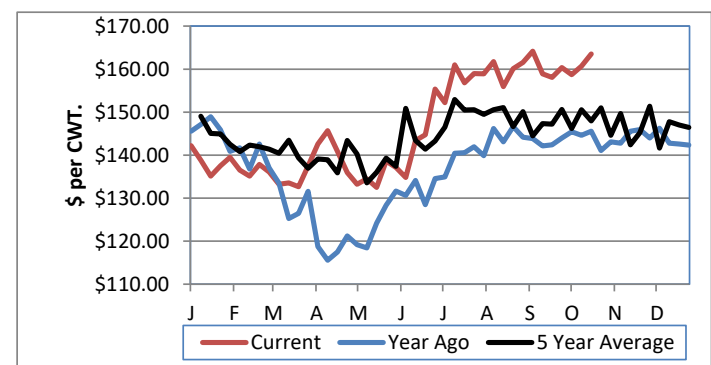
Feeder Steers:	This Week	Last Week	Year Ago
M&L 1			
400-500 lbs.	\$192.83	\$193.11	\$174.05
500-600 lbs.	\$180.75	\$177.32	\$162.54
600-700 lbs.	\$167.92	\$170.11	\$153.14
700-800 lbs.	\$164.61	\$160.48	\$149.17
800-900 lbs.	\$163.53	\$160.64	\$145.56
900-1000 lbs.	\$156.83	\$156.17	\$144.44

Feeder Heifers:	This Week	Last Week	Year Ago
M&L 1			
400-500 lbs.	\$168.39	\$167.99	\$154.32
500-600 lbs.	\$157.40	\$160.82	\$146.91
600-700 lbs.	\$151.93	\$151.43	\$144.69
700-800 lbs.	\$152.79	\$152.08	\$144.22
800-900 lbs.	\$150.52	\$150.64	\$136.58
900-1000 lbs.	\$141.50	\$146.38	\$131.10

Weekly M&L 1 500-600 lb. Feeder Steer Price



Weekly M&L 1 800-900 lb. Feeder Steer Price



Nebraska Weekly Hay Prices

[Weekly Hay Report](#)

	Squares	Rounds
Alfalfa		
Supreme		
Premium		
Good	210.00	132.50-150.00
Fair		
Grass		
Premium Small	200.00	140.00-150.00
Good		110.00-120.00
Ground & Delivered Alfalfa		175.00
Ground & Delivered Cornstalks		100.00

Nebraska Weekly Grain Prices

[Omaha-Council Bluffs - Changed to IA -Terminal Elevator - Southwest](#)

US NO 2 YELLOW CORN	4.91-5.30
US NO 1 SOYBEANS	11.71-11.97

Nebraska Ethanol Co-Products

	Price
DDG	195.00-220.00
Modified Wet	90.00-104.00
Wet	67.00-85.00

Nebraska Weekly Weighted Average Cattle Report

[AMS 2485](#)

	This Week	Last Week	Last Year
Live Str	123.93	122.92	107.60
Live Hfr	124.05	123.19	107.82
Dressed Str	195.84	195.40	168.57
Dressed Hfr	196.00	195.86	168.55

USDA Livestock, Poultry and Grain Market News
Nebraska

Thomas Walthers, OIC
Phone: (308) 390-5399
Email: Thomas.Walthers@usda.gov
www.ams.usda.gov/lpsmarketnewspage