

NEBRASKA WEEKLY SUMMARY

Recap For Week Ending

April 2, 2021

Receipts: This Week: 14,128 Week Ago: 16,417 Year Ago: 20,480

Compared to last week steers under 700 lbs sold 10.00 higher over 700 lbs sold steady. Heifers under 700 lbs sold 5.00 to 10.00 higher, 700 to 800 lbs sold 3.00 higher and over 800 lbs sold steady to 4.00 lower. Demand was good at all reporting auctions. Active market on grass type cattle, natural or NHTC and replacement heifers. Nebraska feedlots sold the bulk of there cash cattle on Good Friday with live sales at 118.00 and dressed sales at 190.00. Farmers are busy with spring tillage and starting to plant some spring crops. Supply included: 100% Feeder Cattle (55% Steers, 45% Heifers, 0% Bulls). Feeder cattle supply over 600 lbs was 70%.

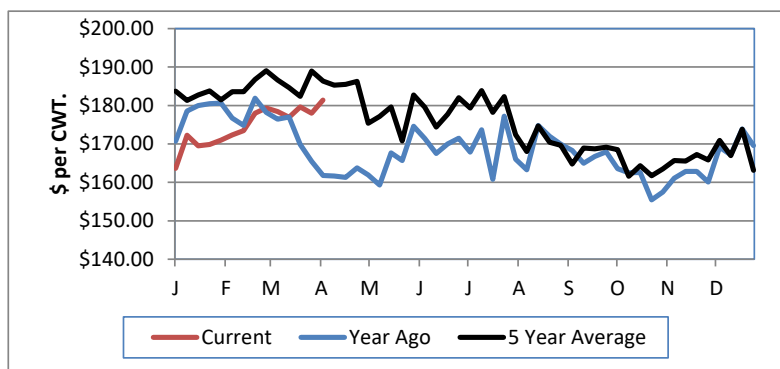
NEBRASKA WEEKLY FEEDER CATTLE AVERAGES

[Auction Summary](#)

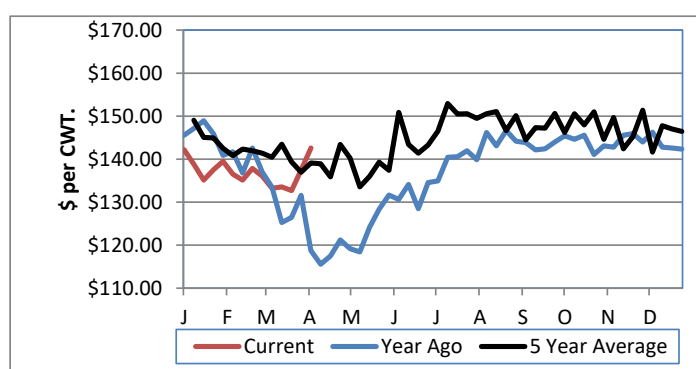
Feeder Steers: M&L 1	This Week	Last Week	Year Ago
400-500 lbs.	\$203.61	\$181.71	\$173.56
500-600 lbs.	\$181.40	\$169.59	\$161.80
600-700 lbs.	\$169.19	\$157.89	\$151.40
700-800 lbs.	\$149.08	\$148.39	\$132.48
800-900 lbs.	\$142.59	\$142.35	\$118.73
900-1000 lbs.	\$133.22	\$137.09	\$115.85

Feeder Heifers M&L 1	This Week	Last Week	Year Ago
400-500 lbs.	\$167.73	\$158.65	\$154.63
500-600 lbs.	\$160.85	\$150.71	\$143.08
600-700 lbs.	\$145.51	\$140.85	\$130.72
700-800 lbs.	\$135.31	\$132.66	\$116.33
800-900 lbs.	\$126.31	\$131.00	\$111.59
900-1000 lbs.	\$119.49	\$130.30	#N/A

Weekly M&L 1 500-600 lb. Feeder Steer Price



Weekly M&L 1 800-900 lb. Feeder Steer Price



Nebraska Weekly Hay Prices

[Weekly Hay Report](#)

	Squares	Rounds
Alfalfa		
Supreme		
Premium		
Good	175.00	110.00-120.00
Fair		
Grass		
Premium Small	170.00	
Good		90.00-100.00
Ground & Delivered Alfalfa		140.00-145.00
Ground & Delivered Cornstalks		75.00-85.00

Nebraska Weekly Grain Prices

[Omaha-Council Bluffs - Changed to IA -Terminal Elevator - Southwest](#)

US NO 2 YELLOW CORN	5.258-5.65
US NO 1 SOYBEANS	13.61-14.46

Nebraska Ethanol Co-Products

	Price
DDG	220.00-230.00
Modified Wet	98.00-112.00
Wet	60.00-82.00

Nebraska Weekly Weighted Average Cattle Report

[AMS 2485](#)

	This Week	Last Week	Last Year
Live Str	118.56115.72	115.72	112.00
Live Hfr	118.39	115.76	111.86
Dressed Str	189.51	184.93	173.79
Dressed Hfr	189.95	184.75	180.00

USDA Livestock, Poultry and Grain Market News
Nebraska

Thomas Walthers, OIC
Phone: (308) 390-5399
Email: Thomas.Walthers@usda.gov
www.ams.usda.gov/lpsmarketnewspage