

NEBRASKA WEEKLY SUMMARY

Recap For Week Ending

July 16, 2021

Receipts: This Week: 13,993 Week Ago: 12,903 Year Ago: 9,962

Compared to last week steers under 800 lbs sold 8.00 to 10.00 lower, over 800 lbs sold 3.00 to 5.00 lower. Heifers under 700 lbs sold 7.00 to 10.00 lower and over 700 lbs sold 1.00 to 7.00 lower. This week's comparison goes back to some very high-priced BBQ special sales last week. Demand was good for weaned fall calves and yearlings off summer grass with mostly moderate demand for backgrounded yearlings. Feedlot trade was steady on the week, live sales from 123.00 to 125.00 and dressed sales from 196.00 to 202.00. Spotting rain showers across the state helping farmers with row crops but hindering hay production. Quite a lot of the second cutting of alfalfa has had some rain on top of the mostly dry windrows decreasing the quality of the hay.

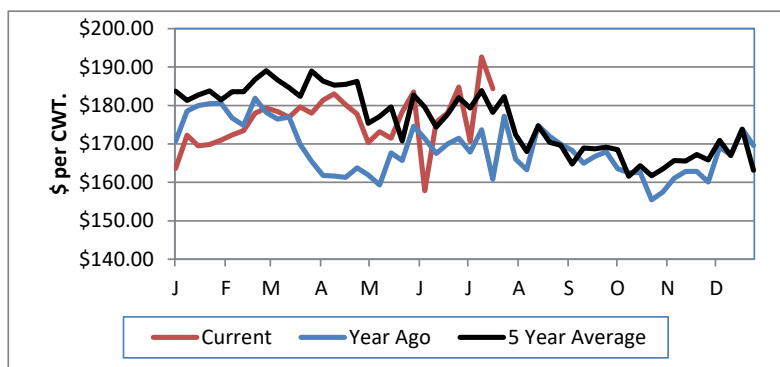
NEBRASKA WEEKLY FEEDER CATTLE AVERAGES

[Auction Summary](#)

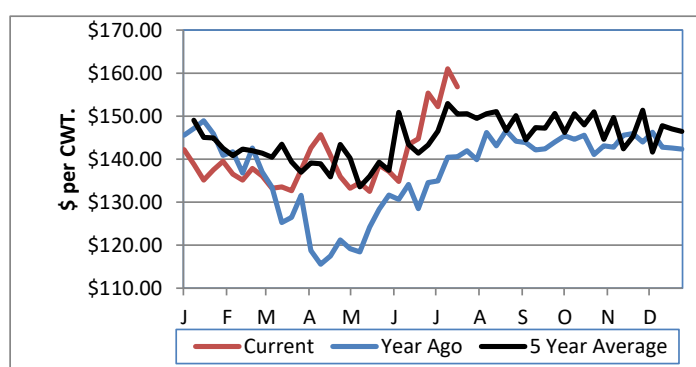
Feeder Steers:	This Week	Last Week	Year Ago
M&L 1			
400-500 lbs.	\$195.76	\$208.02	\$184.09
500-600 lbs.	\$184.35	\$192.63	\$160.81
600-700 lbs.	\$168.04	\$179.72	\$157.39
700-800 lbs.	\$162.68	\$170.86	\$146.89
800-900 lbs.	\$156.82	\$161.00	\$140.57
900-1000 lbs.	\$153.90	\$156.40	\$130.93

Feeder Heifers	This Week	Last Week	Year Ago
M&L 1			
400-500 lbs.	\$170.16	\$180.11	\$168.96
500-600 lbs.	\$163.97	\$176.86	\$156.24
600-700 lbs.	\$153.47	\$160.47	\$144.73
700-800 lbs.	\$148.78	\$149.93	\$136.40
800-900 lbs.	\$140.74	\$147.75	\$131.30
900-1000 lbs.	\$133.49	\$139.13	\$119.78

Weekly M&L 1 500-600 lb. Feeder Steer Price



Weekly M&L 1 800-900 lb. Feeder Steer Price



Nebraska Weekly Hay Prices

[Weekly Hay Report](#)

	Squares	Rounds
Alfalfa		
Supreme		
Premium	225.00	
Good		115.00-135.00
Fair		
Grass		
Premium Small	170.00	125.00
Good		100.00-110.00
Ground & Delivered Alfalfa		165.00
Ground & Delivered Cornstalks		95.00

Nebraska Weekly Grain Prices

[Omaha-Council Bluffs - Changed to IA -Terminal Elevator - Southwest](#)

US NO 2 YELLOW CORN	6.14-6.50
US NO 1 SOYBEANS	14.24-15.08

Nebraska Ethanol Co-Products

	Price
DDG	150.00-180.00
Modified Wet	79.00-90.00
Wet	50.00-80.00

Nebraska Weekly Weighted Average Cattle Report

[AMS 2485](#)

	This Week	Last Week	Last Year
Live Str	123.86	124.01	96.65
Live Hfr	123.88	123.67	97.07
Dressed Str	198.32	198.36	157.15
Dressed Hfr	200.31	198.60	157.25

USDA Livestock, Poultry and Grain Market News
Nebraska

Thomas Walthers, OIC
Phone: (308) 390-5399
Email: Thomas.Walthers@usda.gov
www.ams.usda.gov/lpsmarketnewspage