

NEBRASKA WEEKLY SUMMARY

Recap For Week Ending

September 24, 2021

Receipts: This Week: 14,310 Week Ago: 17,416 Year Ago: 20,310

Compared to last week, light weight steer offerings under 600 lbs sold weak, 700-900 lbs steers traded steady to 5.00 higher, and heavier offering up to 1050 lbs were mostly steady. Heifers were unevenly steady with exception of weakness noted in the lighter offerings under 600 lbs. Demand was good with active buyer participation both in the barn and over the internet. The monthly cattle on feed report was released last Friday showing a 1 percent decline in total cattle on feed as of September 1st comparative to last year. Despite the decline this is still the second highest September 1st inventory on record since the series began in 1996. August placements rose 2 percent over last year at 2.10 million head likely in response to more favorable feeding margins. The direct fat cattle trade ranged from 123.00-125.00/cwt last week in the norther plains, Kansas was from 123.00-124.00, and Texas mostly at 124.00.

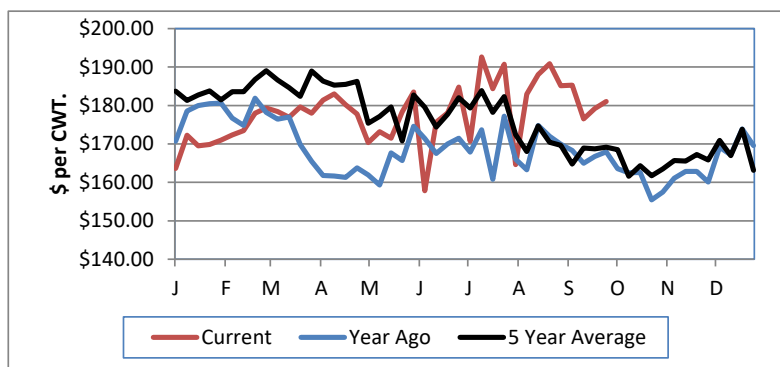
NEBRASKA WEEKLY FEEDER CATTLE AVERAGES

[Auction Summary](#)

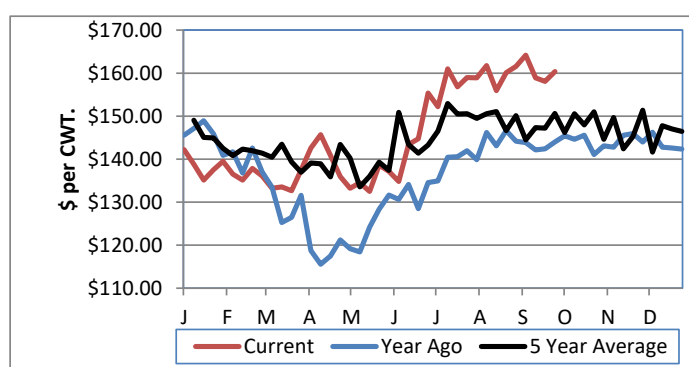
Feeder Steers:	This Week	Last Week	Year Ago
M&L 1			
400-500 lbs.	\$186.91	\$195.22	\$183.26
500-600 lbs.	\$181.07	\$179.19	\$167.95
600-700 lbs.	\$166.21	\$168.95	\$157.12
700-800 lbs.	\$163.15	\$161.28	\$152.00
800-900 lbs.	\$160.35	\$158.09	\$143.96
900-1000 lbs.	\$155.08	\$154.54	\$139.62

Feeder Heifers	This Week	Last Week	Year Ago
M&L 1			
400-500 lbs.	\$168.12	\$167.38	\$158.10
500-600 lbs.	\$159.73	\$162.74	\$151.80
600-700 lbs.	\$156.32	\$158.41	\$146.74
700-800 lbs.	\$148.24	\$152.96	\$142.20
800-900 lbs.	\$146.59	\$147.05	\$135.19
900-1000 lbs.	\$142.83	\$141.38	\$132.34

Weekly M&L 1 500-600 lb. Feeder Steer Price



Weekly M&L 1 800-900 lb. Feeder Steer Price



Nebraska Weekly Hay Prices

[Weekly Hay Report](#)

	Squares	Rounds
Alfalfa		
Supreme		
Premium		
Good	225.00	140.00-150.00
Fair		125.00
Grass		
Premium Small	200.00	140.00-150.00
Good		110.00-130.00
Ground & Delivered Alfalfa		175.00
Ground & Delivered Cornstalks		100.00

Nebraska Weekly Grain Prices

[Omaha-Council Bluffs - Changed to IA -Terminal Elevator - Southwest](#)

US NO 2 YELLOW CORN	5.51-5.86
US NO 1 SOYBEANS	12.52-12.72

Nebraska Ethanol Co-Products

	Price
DDG	185.00-215.00
Modified Wet	90.00-105.00
Wet	60.00-77.00

Nebraska Weekly Weighted Average Cattle Report

[AMS 2485](#)

	This Week	Last Week	Last Year
Live Str	123.99	124.70	104.96
Live Hfr	124.00	124.86	104.85
Dressed Str	196.19	198.87	164.96
Dressed Hfr	198.00	199.73	165.00

USDA Livestock, Poultry and Grain Market News
Nebraska

Thomas Walthers, OIC
Phone: (308) 390-5399
Email: Thomas.Walthers@usda.gov
www.ams.usda.gov/lpsmarketnewspage