

NEBRASKA WEEKLY SUMMARY

Recap For Week Ending

September 17, 2021

Receipts: This Week: 17,416 Week Ago: 11,175 Year Ago: 16,967

Compared to last week, bawling steer calves sold 2.00 to 3.00 higher, feeder steers sold steady to 2.00 lower. Heifer calves sold steady to 2.00 higher, feeder heifers sold mostly steady. Demand was good for fresh calves and yearling feeders. Some loads of cattle went to out of state backgrounding and feedlots. Feedlot sales for the week traded unevenly steady on live sales at 125.00 and dressed sales sold 2.00-3.00 lower from 196.00-200.00, mostly at 200.00.

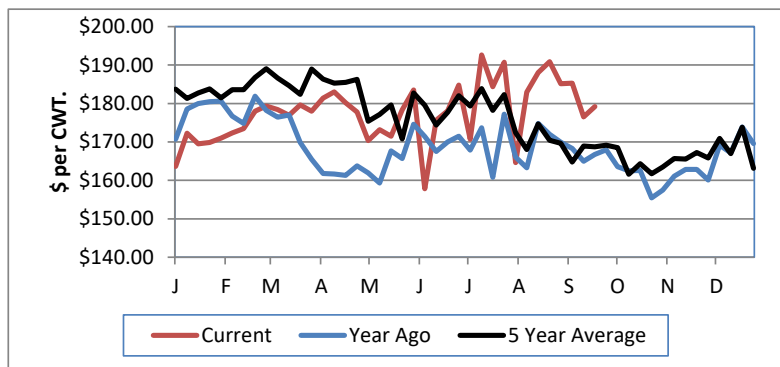
NEBRASKA WEEKLY FEEDER CATTLE AVERAGES

[Auction Summary](#)

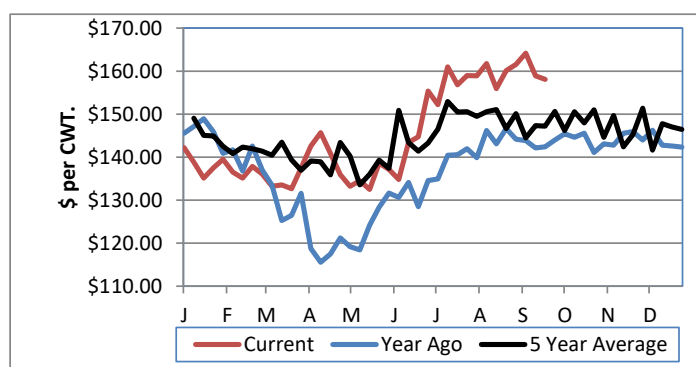
Feeder Steers:	This Week	Last Week	Year Ago
M&L 1			
400-500 lbs.	\$195.22	\$193.90	\$186.28
500-600 lbs.	\$179.19	\$176.47	\$166.75
600-700 lbs.	\$168.95	\$171.71	\$157.30
700-800 lbs.	\$161.28	\$163.70	\$151.04
800-900 lbs.	\$158.09	\$158.92	\$142.40
900-1000 lbs.	\$154.54	\$155.84	\$139.64

Feeder Heifers	This Week	Last Week	Year Ago
M&L 1			
400-500 lbs.	\$167.38	#N/A	\$153.36
500-600 lbs.	\$162.74	\$159.31	\$148.93
600-700 lbs.	\$158.41	\$157.45	\$152.49
700-800 lbs.	\$152.96	\$152.64	\$141.53
800-900 lbs.	\$147.05	\$147.43	\$133.25
900-1000 lbs.	\$141.38	\$143.60	\$132.10

Weekly M&L 1 500-600 lb. Feeder Steer Price



Weekly M&L 1 800-900 lb. Feeder Steer Price



Nebraska Weekly Hay Prices

[Weekly Hay Report](#)

	Squares	Rounds
Alfalfa		
Supreme		
Premium		
Good	225.00	140.00-150.00
Fair		
Grass		
Premium Small	200.00	140.00-150.00
Good		110.00-130.00
Ground & Delivered Alfalfa		175.00
Ground & Delivered Cornstalks		100.00

Nebraska Weekly Grain Prices

[Omaha-Council Bluffs - Changed to IA -Terminal Elevator - Southwest](#)

US NO 2 YELLOW CORN	5.68-6.02
US NO 1 SOYBEANS	12.77-12.91

Nebraska Ethanol Co-Products

	Price
DDG	180.00-225.00
Modified Wet	90.00-104.00
Wet	67.00-77.00

Nebraska Weekly Weighted Average Cattle Report

[AMS 2485](#)

	This Week	Last Week	Last Year
Live Str	124.70	125.17	103.32
Live Hfr	124.86	125.18	103.33
Dressed Str	198.87	201.00	163.58
Dressed Hfr	199.73	201.88	163.71

USDA Livestock, Poultry and Grain Market News
Nebraska

Thomas Walthers, OIC
Phone: (308) 390-5399
Email: Thomas.Walthers@usda.gov
www.ams.usda.gov/lpsmarketnewspage