

**NEBRASKA WEEKLY SUMMARY**

Recap For Week Ending

September 10, 2021

**Receipts:** This Week: 11,175      Week Ago: 10,485      Year Ago: 11,013

Compared to last week fall calves and yearling steers sold 2.00 to 4.00 lower except 800-900 lbs sold 6.00 lower. Most lots of heifers sold 1.00 to 4.00 lower. Demand was moderate to good. Few calves with precondition shots sold in the mix, most had only spring shots. Green choppers are in full swing across the region with a few farmers picking high moisture corn. Most alfalfa producers have finished third cutting and some are thinking of taking a fourth. Several fields of cane or millet are going cut, baled and some chopped. The state needs all the forage it can produce for feeding needs in a very large area. Feedlot sales in Nebraska for the week on near 22,000 head. Live sales 1.00 to 2.00 lower from 124.00-125.00 and dressed sales 2.00 to 3.00 lower from 198.00-200.00.

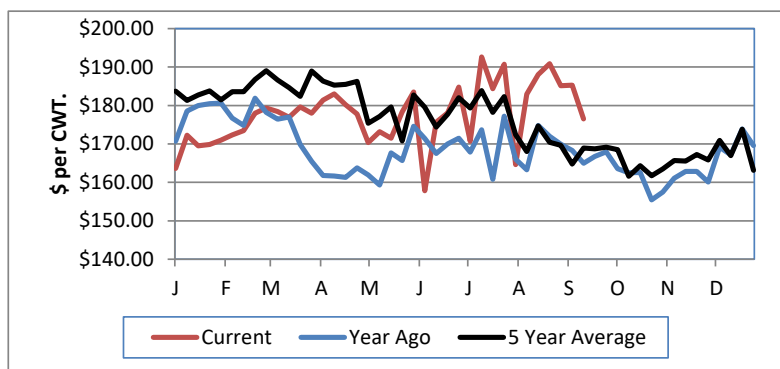
**NEBRASKA WEEKLY FEEDER CATTLE AVERAGES**

[Auction Summary](#)

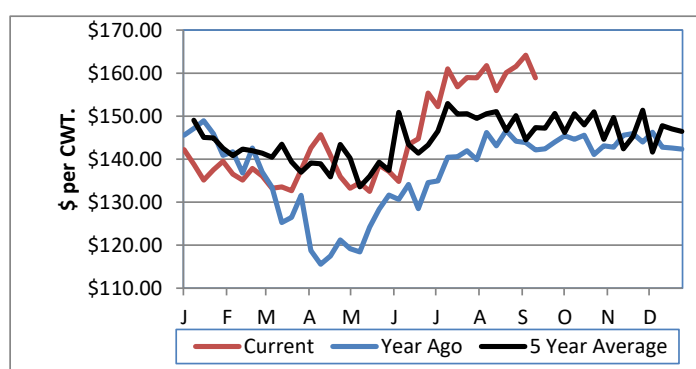
Feeder Steers:	This Week	Last Week	Year Ago
M&L 1			
400-500 lbs.	\$193.90	\$201.46	\$183.88
500-600 lbs.	\$176.47	\$185.28	\$165.00
600-700 lbs.	\$171.71	\$173.29	\$156.59
700-800 lbs.	\$163.70	\$167.90	\$150.85
800-900 lbs.	\$158.92	\$164.16	\$142.12
900-1000 lbs.	\$155.84	\$158.96	\$140.55

Feeder Heifers	This Week	Last Week	Year Ago
M&L 1			
400-500 lbs.	#N/A	\$179.64	\$164.68
500-600 lbs.	\$159.31	\$166.62	\$147.98
600-700 lbs.	\$157.45	\$158.94	\$143.23
700-800 lbs.	\$152.64	\$154.66	\$140.13
800-900 lbs.	\$147.43	\$151.18	\$136.85
900-1000 lbs.	\$143.60	\$142.44	\$131.76

Weekly M&L 1 500-600 lb. Feeder Steer Price



Weekly M&L 1 800-900 lb. Feeder Steer Price



**Nebraska Weekly Hay Prices**

[Weekly Hay Report](#)

	Squares	Rounds
<b>Alfalfa</b>		
Supreme		
Premium		160.00
Good	225.00	140.00-145.00
Fair		125.00
<b>Grass</b>		
Premium Small	200.00	140.00-150.00
Good		110.00-130.00
Ground & Delivered Alfalfa		175.00
Ground & Delivered Cornstalks		100.00

**Nebraska Weekly Grain Prices**

[Omaha-Council Bluffs - Changed to IA -Terminal Elevator - Southwest](#)

US NO 2 YELLOW CORN	5.65-5.72
US NO 1 SOYBEANS	12.70-12.86

**Nebraska Ethanol Co-Products**

	Price
DDG	190.00-225.00
Modified Wet	90.00-104.00
Wet	63.00-75.00

**Nebraska Weekly Weighted Average Cattle Report**

[AMS 2485](#)

	This Week	Last Week	Last Year
Live Str	125.17	125.51	100.98
Live Hfr	125.18	126.00	101.03
Dressed Str	201.00	201.67	160.64
Dressed Hfr	201.88	202.21	160.25

**USDA Livestock, Poultry and Grain Market News**  
Nebraska

Thomas Walthers, OIC  
Phone: (308) 390-5399  
Email: [Thomas.Walthers@usda.gov](mailto:Thomas.Walthers@usda.gov)  
[www.ams.usda.gov/lpsmarketnewspage](http://www.ams.usda.gov/lpsmarketnewspage)